

**100% Granular Clay Absorbent**

# Safe T Sorb®

## Oil Absorbent



**Automotive**



**Industrial**



**Janitorial**



**Farm/Ranch**



**Oil and Gas**

- ◆ **Made from Montmorillonite Clay, a naturally occurring mineral, with superior absorptive ability**
- ◆ **Liquids adhere to the surface pores allowing quick cleanup of water, oil, grease, water coolant, and much more**
- ◆ **EP's #1 Safety Application Product**
- ◆ **Larger coarse product calcined at a higher temperature producing harder granules for better traction permitting delayed waste disposal**
- ◆ **Great for high traffic areas**
- ◆ **Superior for industrial and safety use application**
- ◆ **Suitable for home and work environment**
- ◆ **100% Natural Mineral**
- ◆ **NSF Registered**

**Ep Minerals®**

(800) 366-7607 • [www.epminerals.com](http://www.epminerals.com)



**Tan Large  
Coarse Granulation**

## Safe T Sorb® is perfect for a variety of applications...

- ◆ **Automotive Businesses:** retailers, dealers, repair garages, body shops
- ◆ **Trucks and Heavy Equipment:** truck stops, fuel islands, industrial warehouses
- ◆ **Airports:** general maintenance, ramp and fuel areas
- ◆ **Farmhouse:** livestock facilities, tractor fluid spills, shop operations
- ◆ **Emergency Responders:** fire and police departments, hazmat, traction in snow or ice
- ◆ **Waste Management Companies**
- ◆ **Home:** concrete driveways, garage floors, bottom of garbage can to absorb moisture, paint spills

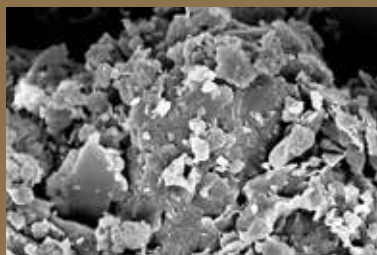
Part #	Weight	Bag Type	Pallet Configuration	Plant
7508	8 lb	Paper	Bags per Pallet: 240 Pallet Size: 40 x 48"   Pallet Height: 55"	Middleton
7941	40 lb	Poly	Bags per Pallet: 50 Pallet Size: 40 x 48"   Pallet Height: 48"	Middleton
7951	50 lb	Poly	Bags per Pallet: 40 Pallet Size: 40 x 48"   Pallet Height: 45"	Middleton
7200	2000 lb	Bulk	Bags per Pallet: 1	Middleton

For more information on Safe T Sorb or to request a free sample kit, please call your sales representative or contact us directly at (800) 366-7607 or visit [www.epminerals.com](http://www.epminerals.com).

### What is Montmorillonite Clay?

There are many types of clay minerals from all over the world. EP's clay minerals, known as Montmorillonite clay, are part of the Smectite group of clays mined in the central region of the US identified as the mid-continent vein. Once mined, the clay is processed at high kiln temperatures allowing pore expansion and increased hardness. Due to high pore space and high surface area, clay absorbs liquid on the outer layer through external pores.

*Microscopic View of Clay*



*Clay Prior to Mining & Processing*



8 lb



40 lb



50 lb

**Ep Minerals®**

(800) 366-7607 • [www.epminerals.com](http://www.epminerals.com)