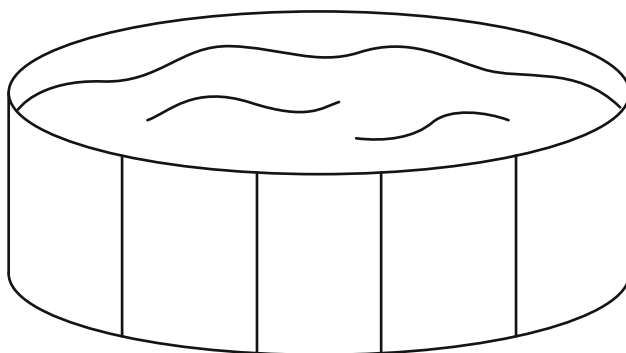




# APX 365™ STEEL PRO MAX™ OWNER'S MANUAL



*For illustrative purposes only*



**WE SUGGEST NOT TO RETURN  
THE PRODUCT TO THE STORE**

**QUESTIONS? PROBLEMS? MISSING PARTS?**

For FAQ, manuals, videos or spare parts, please visit

[bestwayusa.com/support](http://bestwayusa.com/support)




Please visit  
**BestwayUSA.com**

30 in. (76 cm) -  
52 in. (1.32 m)

- Carefully read over the important safety instructions before operating and keep this manual for future reference. Failure to follow these warnings can result in serious injury or death to users, especially children.

- To check the parts included in the box, consult the part list inside this manual. Verify that the equipment components represent the model that you had intended to purchase.
- In case of any damaged or missing parts at the time of purchase, visit our website [bestwayusa.com/support](http://bestwayusa.com/support).

- Bestway will not be responsible for any damage caused to the product due to mishandling or failure to follow these instructions.

- For the installation instructions, refer to the illustration steps “” inside this manual. Drawings are for illustration purposes only. May not reflect actual product. Not to scale.
- Bestway will not be responsible for any damage caused to the product due to mishandling or failure to follow these instructions.

- Chemical maintenance must be performed for the health of your pool. Not adhering to the guidelines in this section might put you and your family's health at risk.

- Be sure that your product is completely clean and dry before the storage. If all the parts are not completely dry, mold may result.
- Store in a dry place with a moderate temperature between 59°F / 15°C and 100°F / 38°C.

- For information concerning warranty terms, visit our website at: [bestwayusa.com/support](http://bestwayusa.com/support).

# IMPORTANT SAFETY INSTRUCTIONS

## READ, FOLLOW AND UNDERSTAND ALL INSTRUCTIONS AND WARNINGS.

Carefully read and follow all information in this user manual before installing and using the pool. These warnings, instructions, and safety guidelines address some common risks of water recreation, but they cannot cover all risks and dangers in all cases. Always use caution, common sense and good judgment when enjoying any water activity. Retain this information for future use.

**⚠ WARNING**

Prevent Drowning



Children under 5 are at highest risk for drowning. Closely watch children who are *in or near* this pool.

**⚠ WARNING**


No Diving



You can break your neck and be paralyzed.

**⚠ WARNING**

Electrocution Risk



Keep all electrical lines, radios, speakers, and other electrical devices away from the pool. Do not place the pool near or under overhead electrical lines.

**⚠ WARNING**

Stay away from drains & suction fittings



Your hair, body, and jewelry can get sucked into drain. You could be held underwater and drown! Do not use pool if drain or suction outlet cover is missing or broken.

## WATER SAFETY

### PREVENT UNAUTHORIZED ACCESS

**DANGER:** **RISK OF ACCIDENTAL DROWNING.** Extreme caution must be exercised to prevent unauthorized access by children. To avoid accidents, ensure that children cannot use this pool unless they are supervised at all times.

**Important:**

- A barrier is necessary to provide protection against potential drowning and near drowning; however, barriers are not a substitute for the constant supervision of children. Adult supervision is always required.
- Pool presents a drowning hazard even during filling and draining of the pool. Maintain constant supervision of children and do not remove any safety barriers until the pool is completely empty and stowed away.
- Toys, chairs, tables, or similar objects that a young child could climb shall be at least 48 in. (1219 mm) from the pool.
- Any equipment connected to the circulation systems shall be positioned so as to prevent their being used as a means of access to the pool by young children.
- Remove or secure the ladder to prevent entry to pool when not in use. Toddlers can climb ladder and get into pool.
- The swimming pool cover is not designated as a safety barrier.

## SAFETY BARRIERS

State or local laws or codes may require fencing or other approved barriers. Check state or local laws and codes before setting up pool.

### Important:

- **Barrier requirements.** The provisions of this section shall apply to the design of barriers for restricting entry into the pool area. The provisions of this section also address when a pool wall can serve as a barrier.
- **Barrier height and clearances.** Barrier heights and clearances shall be in accordance with all of the following:
  - The top of the barrier shall be not less than 48 in. (1219 mm) above grade when measured on the side of the barrier that faces away from the pool. Such height shall exist around the entire perimeter of the barrier and for a distance of 3 feet (914 mm) measured horizontally from the outside of the required barrier.
  - The vertical clearance between grade and the bottom of the barrier shall not exceed 2 in. (51 mm) for grade surfaces that are not solid, such as grass or gravel, when measured on the side of the barrier that faces away from the pool.
  - The vertical clearance between a surface below the barrier to a solid surface, such as concrete, and the bottom of the required barrier shall not exceed 4 in. (102 mm) when measured on the side of the required barrier that faces away from the pool.
- **Openings.** Openings in the barrier shall not allow passage of a 4-in. (102 mm) diameter sphere.
- **Solid barrier surfaces.** Solid barriers that do not have openings shall not contain indentations or protrusions that form handholds and footholds, except for normal construction tolerances.
- **Mesh fence as a barrier.** Mesh fences, other than chain link fences in accordance with section on chain link dimensions, shall be installed in accordance with the manufacturer's instructions and shall comply with ASTM F2286-16 and with all of the following:
  - Where a hinged gate is used with a mesh fence, the gate shall comply with section on doors and gates.
  - Mesh fences shall not be installed on top of onground residential pools.
  - Setback for mesh fences. The inside of a mesh fence shall be no closer than 20 in. (508 mm) to the nearest edge of the water of the pool.
  - Screen enclosure as a barrier. A swimming pool screen enclosure shall be permitted to be utilized as part, or all, of a required barrier, provided that the enclosure complies with the requirements of barriers listed here. Such screen enclosures shall be designed by a registered design professional. Walls of such screen enclosures shall not be considered to be dwelling walls.
  - Mesh for screen enclosures. The mesh utilized in the barrier portion of the screen enclosure shall have a tensile strength of not less than 100 psf when tested in accordance with ASTM D5034-21 and a ball burst strength of not less than 150 psf when tested in accordance with ASTM D3787-16.
- **Closely spaced horizontal members.** Where the barrier is composed of horizontal and vertical members and the distance between the tops of the horizontal members is less than 45 in. (1143 mm), the horizontal members shall be located on the pool or spa side of the fence. Spacing between vertical members shall not exceed 1.75 in. (44 mm) in width. Where there are decorative cutouts within vertical members, spacing within the cutouts shall not exceed 1.75 in. (44 mm) in width.
- **Widely spaced horizontal members.** Where the barrier is composed of horizontal and vertical members and the distance between the tops of the horizontal members is 45 in. (1143 mm) or more, spacing between vertical members shall not exceed 4 in. (102 mm). Where there are decorative cutouts within vertical members, the interior width of the cutouts shall not exceed 1.75 in. (44 mm).
- **Chain link dimensions.** The maximum opening formed by a chain link fence shall be not more than 1.75 in. (44 mm). Where the fence is provided with slats fastened at the top and bottom that reduce the openings, such openings shall be not greater than 1.75 in. (44 mm).
- **Diagonal members.** Where the barrier is composed of diagonal members, the maximum opening formed by the diagonal members shall be not greater than 1.75 in. (44 mm). The angle of diagonal members shall be not greater than 45 degrees (0.79 rad) from vertical.
- **Doors and gates.** Doors and gates in barriers shall comply with the requirements of all sections above and shall be equipped to accommodate a locking device. Pedestrian access doors and gates shall open outward away from the pool, shall be self-closing, and shall have a self-latching device. Doors and gates shall not swing over stairs.
  - Utility or service doors and gates. Doors and gates not intended for pedestrian use, such as utility or service doors and gates, shall remain locked when not in use.
  - Double or multiple doors and gates. Double doors and gates or multiple doors and gates shall have not fewer than one leaf secured in place and the adjacent leaf shall be secured with a self-latching device.
  - Latch release. For doors and gates in barriers, the door and gate latch release mechanisms shall be in accordance with the following:
    - Where door and gate latch release mechanisms are accessed from the outside of the barrier and are not of the self-locking type, such mechanisms shall be located above the finished floor or ground surface not less than 54 in. (1372 mm).

## SAFETY INFORMATION

- Where door and gate latch release mechanisms are of the self-locking type such as where the lock is operated by means of a key, an electronic opener, or the entry of a combination into an integral combination lock, the lock operation control and the latch release mechanism shall be located above the finished floor or ground surface not greater than 54 in. (1372 mm).
- Where the only latch release mechanism of a self-latching device for a gate is located on the pool side of the barrier, the release mechanism shall be located at a point that is at least 3 in. (76 mm) below the top of the gate.
- *Clear zone.* Where equipment, including pool equipment such as pumps, filters, and heaters, is on the same lot as a pool and such equipment is located outside of the barrier protecting the pool or spa, such equipment shall be located not less than 36 in. (914 mm) from the outside of the barrier.
- *Barriers adjacent to latch release mechanisms.* Where a latch release mechanism is located on the inside of a barrier, openings in the door, gate, and barrier within 18 in. (457 mm) of the latch shall not be greater than 0.5 in. (13 mm) in any dimension.
- *Structure wall as a barrier.* Where a wall of a dwelling or structure serves as part of the barrier and where doors, gates, or windows provide direct access to the pool or spa through that wall, one of the following shall be required:
  - Operable windows having a sill height of less than 48 in. (1219 mm) above the indoor finished floor and doors shall have an alarm that produces an audible warning when the window, door, or their screens are opened. The alarm shall be listed and labeled as a water hazard entrance alarm in accordance with UL 2017.
  - In dwellings not required to be accessible units, Type A units, or Type B units, the operable parts of the alarm deactivation switches shall be located 54 in. (1372 mm) or more above the finished floor.
  - In dwellings that are required to be accessible units, Type A units, or Type B units, the operable parts of the alarm deactivation switches shall be located not greater than 54 in. (1372 mm) and not less than 48 in. (1219 mm) above the finished floor.
  - In structures other than dwellings, the operable parts of the alarm deactivation switches shall be located not greater than 54 in. (1372 mm) and not less than 48 in. (1219 mm) above the finished floor.
  - A safety cover that is listed and labeled in accordance with ASTM F1346-23 is installed for the pool.
  - An approved means of protection, such as self-closing doors with self-latching devices, is provided. Such means of protection shall provide a degree of protection that is not less than the protection afforded by either of the first two bullets of this section.
- *Pool wall as a barrier.* An aboveground/onground residential pool wall structure, or a barrier mounted on top of an aboveground/onground residential pool wall structure, shall serve as a barrier where all of the following conditions are present:
  - Where only the pool wall serves as the barrier, the bottom of the wall is on grade, the top of the wall is not less than 48 in. (1219 mm) above grade for the entire perimeter of the pool, the wall complies with the requirements of barriers listed here and the pool manufacturer allows the wall to serve as a barrier.  
**Note:** This pool wall should never be the only barrier to prevent unauthorized access. We recommend following the principle of “layers of protection” – use more than one barrier type (see: CPSC’s Safety Barrier Guidelines for more information).
  - Where a barrier is mounted on top of the pool wall, the top of the barrier is not less than 48 in. (1219 mm) above grade for the entire perimeter of the pool, and the wall and the barrier on top of the wall comply with the requirements of barriers listed here.
  - Ladders or steps used as means of access to the pool are capable of being secured, locked, or removed to prevent access except where the ladder or steps are surrounded by a barrier that meets the requirements of barriers listed here.
  - Openings created by the securing, locking, or removal of ladders and steps do not allow the passage of a 4 in.-diameter (102 mm) sphere.
  - Barriers that are mounted on top of aboveground/onground residential pool walls are installed in accordance with the pool manufacturer’s instructions.

### SAFE USE OF THE POOL

**CAUTION:** Never swim alone.

**CAUTION:** Always enter and exit the pool slowly and cautiously. Wet surfaces are slippery.

**Important:**

- Teach your children to swim.
- Never dive, jump, or slide into the pool.
- Parents should learn CPR, so you are prepared to respond to an emergency.
- When searching for a missing child, check pool first, even if you think your child is in the house.
- Alcohol consumption and pool activities do not mix. Never allow anyone to swim, dive or slide under the influence of alcohol or drugs.
- Do not use the pool during severe weather conditions, i.e. electrical storms, tornadoes, etc.
- Do not allow diving, climbing, sitting, or standing on the top rails of the pools.
- Do not allow roughhousing and horseplay.
- Do not engage in extended breath holding activities underwater; you may black out and drown.

**Ladder use:**

- Install a pool ladder(s) or staircase for entry and exit from the pool.
- The ladder shall be located on a solid base and the ladder shall be installed per the ladder's instructions.
- Face ladder going up or down.
- Allow only one person at a time on the ladder.
- Instruct pool users about the proper use of all pool ladder(s) and staircases.

**Designate a Water Watcher:**

- Drowning occurs silently and quickly. Assign an adult to supervise pool and wear provided Water Watcher tag.
- Ask the designated Water Watcher to wear the tag the entire time they are in charge of supervising children in the pool.
- If the Water Watcher needs to leave for any reason, ask them to pass the Water Watcher tag and the supervision responsibility to another adult.
- For a replacement Water Watcher tag, contact Bestway USA support.

## ELECTRICAL SAFETY

**DANGER:** **RISK OF ELECTRIC SHOCK.** Severe electrical shock could result if you install your pump or filter on a deck. The pump or filter could fall into the water, causing severe shock or electrocution. Do not install on a deck or other surface at, above, or slightly below the top rail of the pool.

**Important:**

- The pool shall be located a minimum distance of 6 feet (1.83 m) from any electrical receptacle.
- Connect power cords to a 3-wire grounding-type outlet only.
- Keep all electrical radios, speakers and other appliances away from the swimming pool.
- When you touch the filter, pump, or electrical parts, be sure the ground under your feet is "Bone Dry".

**GFCI:**

- All 125 volt, 15 and 20 ampere receptacles located within 20 feet (6.1 m) of the pool shall be protected by a ground fault circuit interrupter (GFCI). The 20 feet (6.1 m) distance is measured via the shortest straight line distance the supply cord would follow without piercing a floor, wall, ceiling, doorway, window, or other permanent barrier.

# SAFETY CONSIDERATIONS

### The pool area:

- Prior to use of the pool, the installer shall affix all no diving signs and safety signs in accordance with installation instructions so they can be easily visible. Please contact pool site dealer or manufacturer for additional safety signs if deemed necessary.
- A list of emergency telephone numbers shall be posted, such as the nearest available police, fire, ambulance, and/or rescue unit. These numbers are to be kept near the telephone that is closest to the pool.
- When leaving pool, remove floats and toys from pool that might attract a child.
- Use artificial lighting during nighttime pool use, to illuminate all safety signs, ladders, steps, deck surfaces and walks.
- The bottom of the pool shall be visible at all times from the outside perimeter of the pool.
- Keep all breakable objects out of the pool area.
- Keep deck clean and clear of objects that may create a tripping hazard.
- Be aware of overhead power lines when vacuuming your pool or using a telescoping pole.
- The installer shall affix safety signs above the water line according to the instructions.

### Safety equipment:

- Basic lifesaving equipment, including one of the following, shall be on hand at all times:
  - A light, strong, rigid pole (shepherd's crook) not less than 12 feet (3.66 m) long.
  - A minimum ¼ in. (6 mm) diameter rope as long as 1½ times the maximum width of the pool or 50 feet (15.24 m), whichever is less, which has been firmly attached to a Coast Guard-approved ring buoy, or a similarly approved flotation devices.

### Maintenance:

**NOTE:** The pool is subject to wear and deterioration. If not maintained properly, certain types of excessive or accelerated deterioration can lead to failure of the pool structure that might release large quantities of water that could cause bodily harm and property damage.

- Check regularly for signs of wear or loose bolts that could make the deck unsafe.
- Check all nuts and bolts regularly to ensure that the ladder stays sturdy.
- For pool service, select a certified pool professional.

### Stay informed:

- Publications are available that describe the risk of drowning, entrapment, and diving accidents.
- Available publications related to pool safety include the Pool and Hot Tub Alliance's (PHTA) booklets entitled: *The Sensible Way to Enjoy Your Aboveground/Onground Swimming Pool, Children Aren't Waterproof, Pool and Spa Emergency Procedures for Infants and Children, Layers of Protection.*

For additional safety information, see [www.PHTA.org](http://www.PHTA.org) or CPSC's [www.poolsafely.gov](http://www.poolsafely.gov).

**Please read carefully and keep for future reference.**



Compare the parts in your box to the parts listed in this manual. Verify that the equipment components represent the model that you had intended to purchase. If any parts are damaged or missing at the time of purchase, visit our website [bestwayusa.com/support](http://bestwayusa.com/support).  
**NOTE:** Some parts differ due to pool sizes/structures. Drawings are for illustration purposes only. May not reflect actual product. Not to scale.  
 Before assembling the product, take a few minutes to become familiar with all the parts.  
 Assembly of this pool can be completed without additional tools.

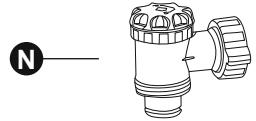
**POOL PARTS NEEDED**



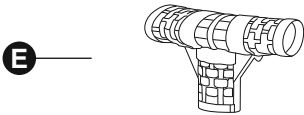
Top Rails



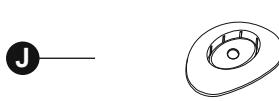
Vertical Leg



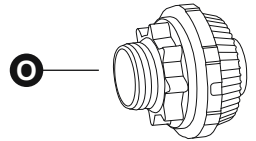
Control Valve



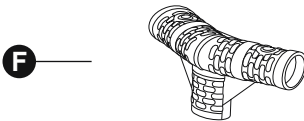
T Connector  
(with the spring-loading pin structure)



Foot Pad



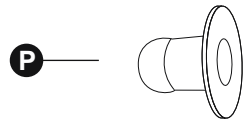
Pool Inlet Strainer



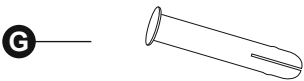
T Connector  
(with the pin fixing structure)



Pool Liner



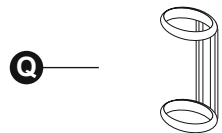
Water Stopper



Pin



Drain Valve Adapter



Plastic Ring



Pin Gasket



Underwater Adhesive Repair Patch

# PARTS & TOOLS



STEEL PRO MAX™	12 ft. x 30 in. (3.66 m x 76 cm)	13 ft. x 42 in. (3.96 m x 1.07 m)	13 ft. x 48 in. (3.96 m x 1.22 m)	14 ft. x 33 in. (4.27 m x 84 cm)	14 ft. x 42 in. (4.27 m x 1.07 m)
		256	256	256	256
<b>D</b>	x12	x13	x13	x14	x14
<b>E</b>	/	x13	x13	x14	x14
<b>F</b>	x12	/	/	/	/
<b>G</b>	x24	/	/	/	/
<b>H</b>	x24	/	/	/	/
<b>I</b>	x12	x13	x13	x14	x14
<b>J</b>	x12	x13	x13	x14	x14
<b>K</b>	x1	x1	x1	x1	x1
<b>L</b>	x1	x1	x1	x1	x1
<b>M</b>	x2	x4	x4	x4	x4
<b>N</b>	/	/	/	/	/
<b>O</b>	/	/	/	/	/
<b>P</b>	x3	x3	x3	x3	x3
<b>Q</b>	x12	x13	x13	x14	x14

STEEL PRO MAX™	14 ft. x 48 in. (4.27 m x 1.22 m)	15 ft. x 42 in. (4.57 m x 1.07 m)	15 ft. x 48 in. (4.57 m x 1.22 m)	16 ft. x 48 in. (4.88 m x 1.22 m)	18 ft. x 48 in. (5.49 m x 1.22 m)
		256	256	256	256
<b>D</b>	x14	x15	x15	x16	x18
<b>E</b>	x14	x15	x15	x16	x18
<b>F</b>	/	/	/	/	/
<b>G</b>	/	/	/	/	/
<b>H</b>	/	/	/	/	/
<b>I</b>	x14	x15	x15	x16	x18
<b>J</b>	x14	x15	x15	x16	x18
<b>K</b>	x1	x1	x1	x1	x1
<b>L</b>	x1	x1	x1	x1	x1
<b>M</b>	x4	x4	x4	x4	x4
<b>N</b>	/	/	/	x1	x1
<b>O</b>	/	/	/	x1	x1
<b>P</b>	x3	x3	x3	x2	x2
<b>Q</b>	x14	x15	x15	x16	x18

# PARTS & TOOLS



APX 365™	15 ft. x 52 in. (4.57 m x 1.32 m)	18 ft. x 52 in. (5.49 m x 1.32 m)	20 ft. x 52 in. (6.10 m x 1.32 m)	22 ft. x 52 in. (6.71 m x 1.32 m)
		256	256	256
<b>D</b>	x15	x18	x20	x22
<b>E</b>	x15	x18	x20	x22
<b>F</b>	/	/	/	/
<b>G</b>	/	/	/	/
<b>H</b>	/	/	/	/
<b>I</b>	x15	x18	x20	x22
<b>J</b>	x15	x18	x20	x22
<b>K</b>	x1	x1	x1	x1
<b>L</b>	x1	x1	x1	x1
<b>M</b>	x4	x4	x4	x4
<b>N</b>	x1	x1	x1	x1
<b>O</b>	x1	x1	x1	x1
<b>P</b>	x2	x2	x2	x2
<b>Q</b>	x15	x18	x20	x22



## Overview

### CHOOSING THE CORRECT LOCATION

The location chosen where the pool will be installed must adhere to the following conditions:

- Only for outdoor use.
- Because of the combined weight of the water inside the pool and the users, the surface chosen must be capable of uniformly supporting the total weight for the entire time the pool is installed.
- When choosing the surface, take into consideration that water may come out of the pool when in use or when it rains. If the water softens the surface, it may lose its capability to support the pool weight.
- The surface must be flat and smooth. If the surface is inclined or uneven, it can create an unbalanced load on the structure of the pool. This can damage the welding points of the liner and bend the frame. In the worst cases, the pool can collapse, causing serious personal injury and/or damage to personal property.
- The selected surface must be clear of any type of object. Due to the weight of the water, any object under the pool could damage or perforate the bottom of the pool.
- The selected surface must be clear of aggressive plants and weed species. Types of strong vegetation could grow through the liner and create water leakage. Grass or other vegetation that may cause odor or slime to develop must be eliminated from the chosen location.
- The selected position must be far from house entrance. Do not position any equipment or other furniture around the pool. The water that comes out of the pool during use or due to product malfunctions can damage furniture inside the house or surrounding the pool.
- It is important to position the pool away from any objects children could use to climb into the pool, including pumps and filters.
- Position the pool near an adequate drainage system to deal with overflow or to empty the pool. Ensure the pool side with the **water inlet A and outlet B** is facing in the direction of the power source, where the filtration system will be connected.
- The selected location must not have overhead power lines or trees. Be sure the location does not contain underground utility pipes, lines or cables of any kind.
- Check the position of the vertical legs and/or the U-supports regularly. They must always be level with the bottom of the pool. If the vertical leg or the U-support starts to sink into the ground, drain the pool water immediately to avoid the pool collapsing due to the uneven load on the frame structure. Change the location of the pool or modify the surface material.

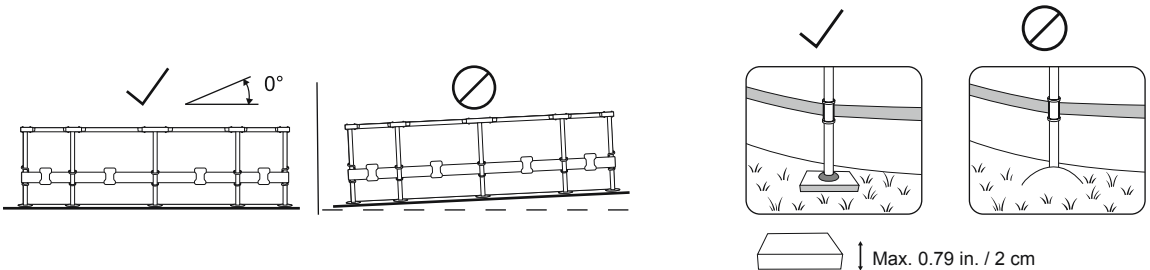
**Suggested surfaces:** grass, ground, concrete and all other surfaces that respect the above set-up conditions.

**Surfaces to avoid:** mud, sand, gravel, deck, balcony, driveway, platform, soft/loose soil or other surface that does not meet the above set-up conditions.

Follow the important instructions above to choose the correct surface and location to set up your pool.

**NOTE:** If parts become damaged because the set-up surface and location does not adhere to these instructions, it will not be considered a manufacturer defect and will void the warranty and any service claims. It is the owner's responsibility to ensure the site meets the requirements at all times.

If the selected surface is too soft to hold the frame, install wood or metal plates with a thickness of no bigger than 0.79 in. (2 cm) under the legs. The plates must not touch the liner or have a sharp area, as this can cause damage and will not be covered under the manufacturer's warranty.



### Additional Guidelines:

Check with your local city council for bylaws relating to fencing, barriers, lighting and safety requirements, and ensure you comply with all laws. If a pump and/or ladder is included in the set, refer to the pump's and/or ladder's manual for safety instructions and installation. The ladder must match the pool size.

If you must change locations during set-up, lift the liner to move it; do not drag it on the ground. The friction between the PVC material and the ground can damage the pool liner.

### Helpful Installation Tips:

We strongly suggest opening the package and assembling the pool when the ambient temperature is above 59°F / 15°C. The PVC material of the liner will be more flexible and easier to assemble in this environment.

We suggest you buy a pool ladder (if one is not included in the set) and prepare it before setting up the pool, as it will help whenever you need to get inside it.

# INSTALLATION INSTRUCTIONS



For installation instructions, follow the illustrations below. Drawings are for illustration purposes only. May not reflect actual product. Not to scale.

Bestway is not responsible for damage caused to the pool due to mishandling or failure to follow these instructions.

**NOTE:** The installation must comply with the codes of the authority having jurisdiction and may require permits for building, plumbing electrical, zoning, etc.



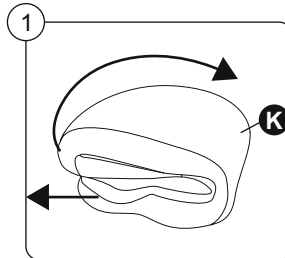
Installation takes approximately 30 - 60 minutes with 2-3 people, excluding any preparations or water filling (refer to the package for specific information about your purchased item).

- Please note that assembly times may vary based on pool size and individual experience.

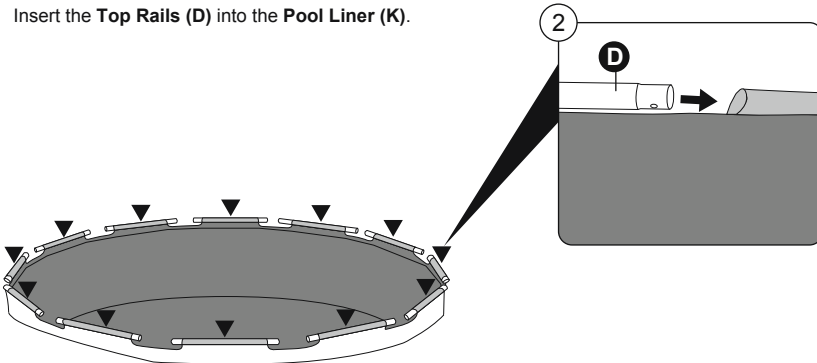
## Assembly Instructions

**!** The installation steps outlined in the manual apply to all listed sizes except for a particular step specifying otherwise. The combinations and quantities of parts needed may differ based on the size of your pool.

1. Spread the **Pool Liner (K)** in the selected area.

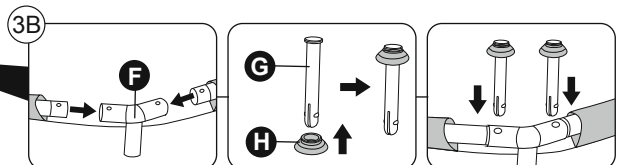
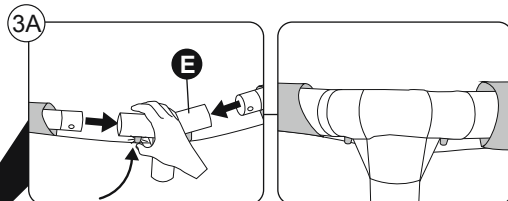


2. Insert the **Top Rails (D)** into the **Pool Liner (K)**.



3. Connect the **Top Rails (D)** using the **T Connectors (E & F)**.

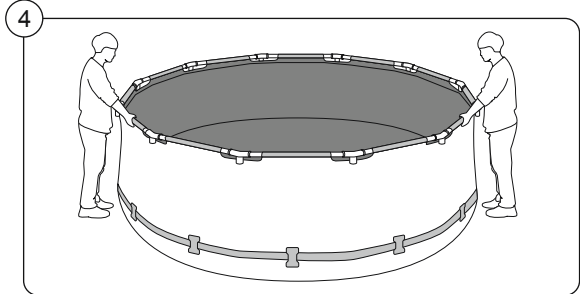
- For **T Connector (E)** with the spring-loading pin structure: Make sure the spring-loading pins of each **T Connector (E)** are inserted correctly into the top rails.
- For **T Connector (F)** with the pin fixing structure: Attach the **Pin Gaskets (H)** to each **Pin (G)**, and connect the whole structure to each **T Connector (F)** and top rail.



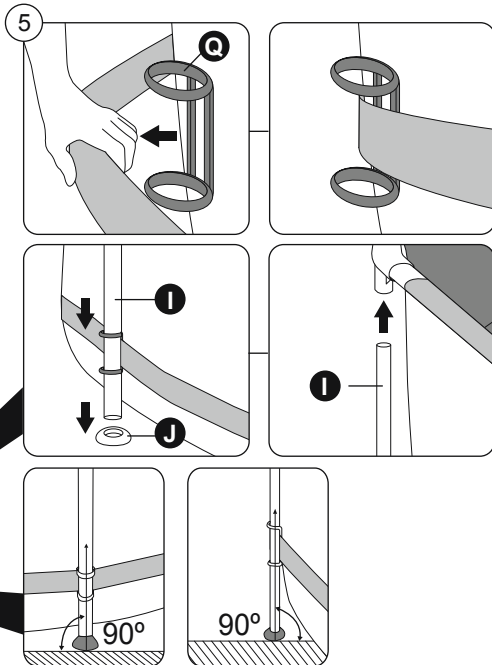
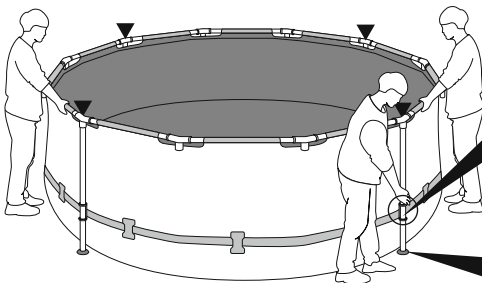


## Assembly Instructions Continued

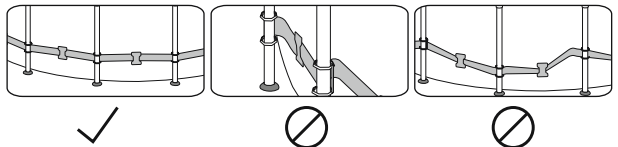
4. Two or three people are needed for this step. One or two people will lift up the liner, making it easier for the remaining person to install the vertical legs.



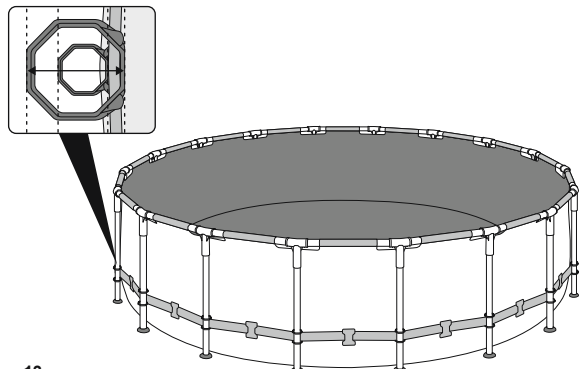
5. Insert each **Plastic Ring (Q)** behind the belt of the **Pool Liner (K)**, lining it up with where the **Vertical Legs (I)** will be placed. Ensure a snug fit, then install each **Vertical Leg (I)** through the **Plastic Ring (Q)** and into the **Foot Pad (J)**. Connect the leg with the pre-installed **T Connector (E & F)**. We recommend cross-installing the first four legs, then completing the rest.



- **IMPORTANT:** Before filling, check that the plastic rings, vertical legs, and belt are installed in the correct position as shown.



- ! **CAUTION (for APX 365™ pools only):** Due to the unique structure of the APX 365™ pools, it is essential to pay careful attention when aligning the corners and sides of the frames with the plastic rings during installation. Misalignment of these two components can lead to product damage over time.

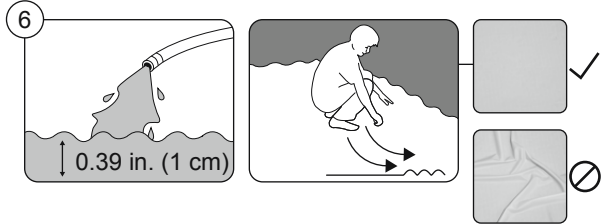




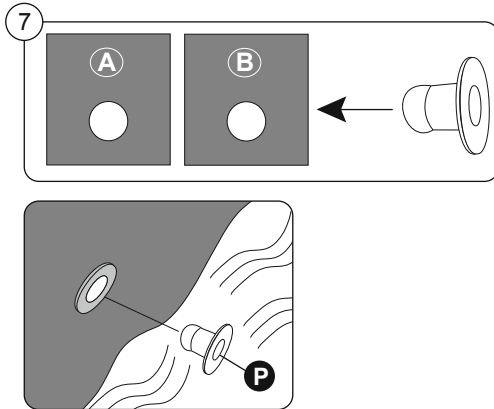
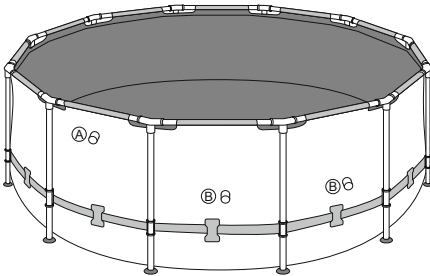
## Assembly Instructions Continued

*You have completed the pool frame structure installation. Now, it's time to fill with water.*

6. Folds in the liner on the bottom reduce the size of the pool and create extra pressure on the seams, reducing its lifespan. When the pool is filled with around 0.39 in. (1 cm) of water, gently smooth out the bottom liner to remove all folds. We recommend starting from the center of the pool and continuing outwards. You can continue to fill the pool when the floor is smooth and wrinkle-free.

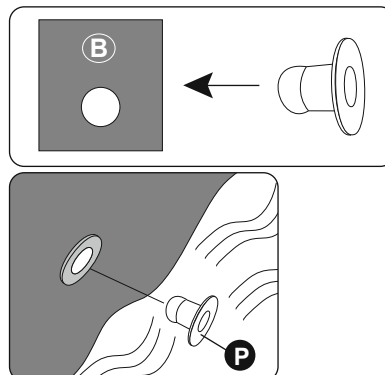
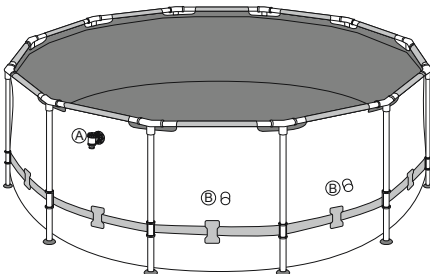
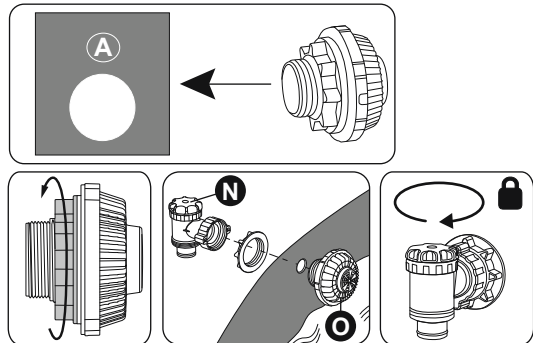


7. To prevent water leakage, insert the **Water Stoppers (P)** and/or the **Pool Inlet Strainer (O)** into the pool A Inlet and B Outlets based on your purchased item.



If your pool is equipped with the **Pool Inlet Strainer (O)**:

- Unscrew the gear from the **Pool Inlet Strainer (O)**.
- Insert the smaller end of the **Pool Inlet Strainer (O)** into the inlet hole from the inside of the pool.
- Tighten the gear from the outside of the pool to attach the **Pool Inlet Strainer (O)** to the liner.
- Screw the **Control Valve (N)** onto the **Pool Inlet Strainer (O)** and close the water valve to the locked position to complete the connection.

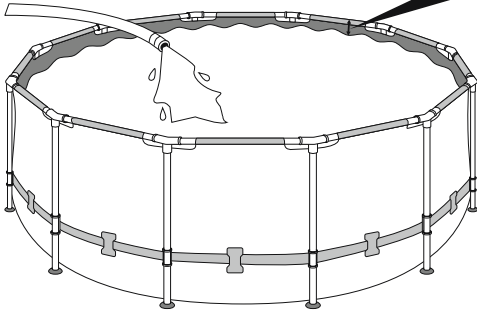
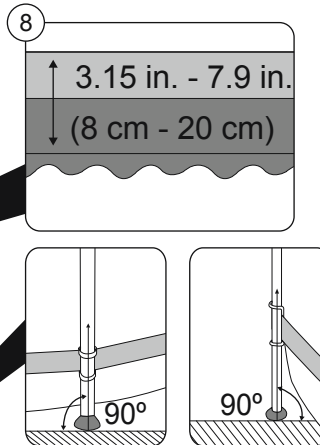


## INSTALLATION INSTRUCTIONS



### Assembly Instructions Continued

8. Continue to fill the pool with water until the water level is 3.15 in. - 7.9 in. (8 cm - 20 cm) below the top welding line of the pool. Ensure the belt remains flush against the pool wall throughout the setup process.
- NOTE: Once you begin to fill the pool with water, check the position of the vertical legs at times while filling the pool with water. The legs can gradually change position due to increased water weight. If the legs are not perpendicular to the ground, please stop filling the pool and adjust them. It will help with weight distribution to avoid strain on the frame and liner.



### Filling the Pool with Water:

- ATTENTION:**
- Do not leave the pool unattended while filling with water. Continuously check the pool to ensure it is being filled correctly.
  - Make sure the vertical legs are always perpendicular to the ground and not under the liner or leaning to the side.

It is highly recommended to use tap water for filling to minimize unwanted content, such as minerals. Do not use sea water. Fill the pool with water after all assembly steps are completed and until the water reaches the welding line, which corresponds to 90% of the full capacity. Do not overfill as this could cause the pool to collapse. In the case of heavy rainfall, we strongly recommend reducing the water level to keep it at 90% capacity and avoid the overflow of water.

- IMPORTANT:** When the pool is 90% full, check that the distance between the water surface and the top of the rails is the same all around. If it is different, it means that the surface is not level, and we strongly recommend draining the water and adjusting the chosen location. Never attempt to move the pool with water still in it.
- IMPORTANT:** Keeping the pool full of water on unlevel ground can cause the bursting of welding points and/or pool collapse, causing serious personal injury and/or damage to property. Your pool may contain a great deal of pressure. If your pool has a bulge or uneven side, the sides may burst, suddenly releasing water and causing serious personal injury and/or damage to property. When the pool is 90% full, check the pool for any leaks at the valves or seams and for any evident water loss. Do not add any chemicals to the water until this has been done.

## MAINTENANCE INSTRUCTIONS



Keeping your pool water clean and chemically balanced is necessary. Simply using the filtration system and cleaning the filter cartridge is not enough for proper maintenance of the water. It is important to prioritize the maintenance and health of your pool water. If you do not adhere to these guidelines, your and your family's health might be at risk.

### Water Maintenance:

We recommend you use pool chemicals to maintain water chemistry and chlorine or bromine tablets (do not use granules) with a chemical dispenser. The chemical maintenance with chemical tablets must be performed with a chemical dispenser or chemical floater. Do not throw chemical products directly into the water. The chemicals will settle on the bottom of the pool and damage and discolor the liner. In the worst cases, it will damage the structure of the pool liner. Pool damage resulting from the misuse, number of users and overall mismanagement of pool water is not covered by the warranty. Water quality is directly related to frequency of use, number of users and overall maintenance of the pool. The water should be changed every 3 days if there is no chemical treatment being performed with the water.

We recommend that you take a shower before using your pool, as cosmetic products, lotions and other residues on the skin can quickly degrade water quality. Place a bucket of water next to the pool to clean users' feet before they enter the water. Use a pool skimmer for the surface and a vacuum cleaner for the pool bottom regularly to avoid settled dirt. If they are not included in the set, you can purchase them by visiting our website ([www.bestwayusa.com](http://www.bestwayusa.com)) or by visiting the nearest pool supply store.



## Chemical Usage:

Your pool set may not include a chemical dispenser. In this case, you can purchase one by visiting our website ([www.bestwayusa.com](http://www.bestwayusa.com)) or by visiting the nearest pool supply store. Remove the chemical dispenser when the pool is in use. After performing chemical maintenance and before using the pool, use a test kit (not included) to test the water chemistry.

We recommend maintaining your water's chemical balance as shown in the table. Exceeding the following parameters can damage the structure of the liner and create a dangerous situation for the users.

Please consult your local pool or chemical supply retailer for more information about chemical maintenance. Pay close attention to the chemical manufacturer's instructions.

TEST	IDEAL VALUES
Total Alkalinity	80–120 ppm
pH	7.4 – 7.6
Calcium hardness	200 – 400 ppm
Cyanuric acid	30 – 50 ppm
Free available chlorine	2 – 4 ppm

## Winterization (for APX 365™ pools only)

Polar-Shield™ year-round weather defense allows the pool to stay up during wintertime without completely emptying the pool water. Make sure the filtration system and other pool accessories are disconnected from the pool. Use the pool cover throughout the winter season to prevent debris from falling into the pool.

When the outdoor temperature is around 32°F / 0°C or below, there is a risk that the water will freeze. Before installing the pool cover:

1. Ensure the water level is at least 4 in. (10 cm) lower than the pool's B outlet valves. If the water level is above the pool's A inlet or B outlet valves, water may freeze inside, irreparably damaging the liner when the ice expands. It will not be considered a manufacture defect and will void the warranty and any service claims.
2. Place an inflatable item made of cold-resistant material, such as a pool pillow (not included), on the surface of the water to compensate for the space between the water level and the top rails. This will ensure the pool cover is supported.

## IMPORTANT TIPS:

If there is ice in the pool water, remove it very carefully. The sharp edges of the ice can break and damage the pool liner.

If it rains, check the water level to ensure it is 4 in. (10 cm) lower than the pool's B outlet valves, especially if the outdoor temperature is around 32°F / 0°C or below and the water may freeze.

## Accessory Instructions

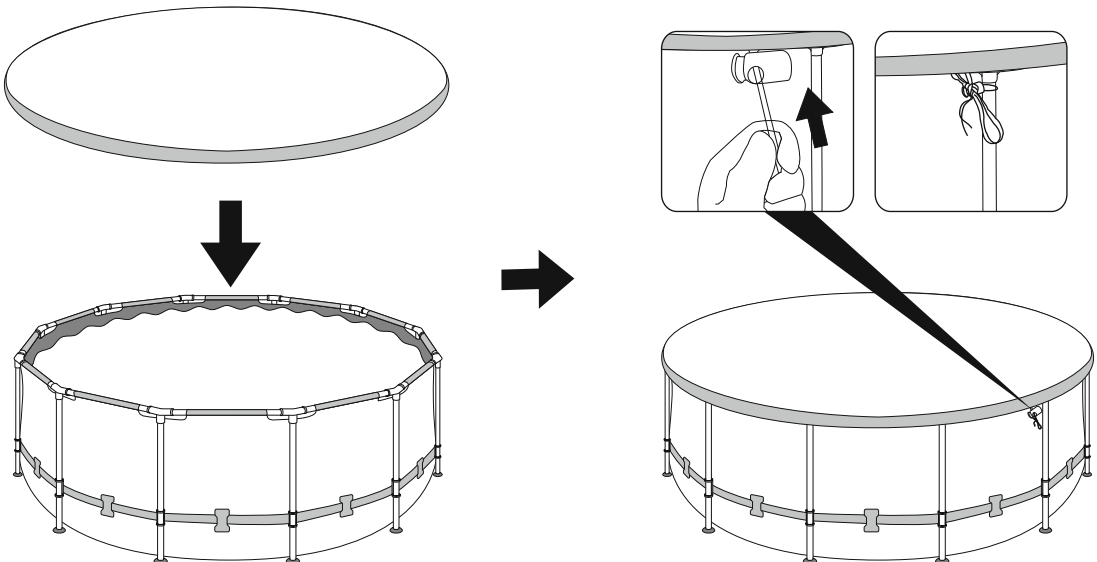
We suggest that you buy a pool cover, if one is not included in the set, and cover the pool when not in use to prevent damage to the top rail material. Gently clean any dirt from the top rails with a clean cloth.

In the event of a leak, patch your pool using the underwater adhesive repair patch provided. You can find the instructions in the FAQs on the support section of our website ([www.bestwayusa.com/support](http://www.bestwayusa.com/support)).

If your pool has a connection valve for attaching pool cleaning accessories, you must remove the debris screen from the connector prior to accessory attachment.



## Pool Cover

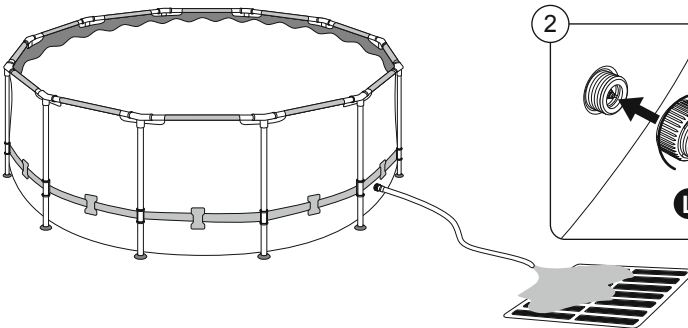
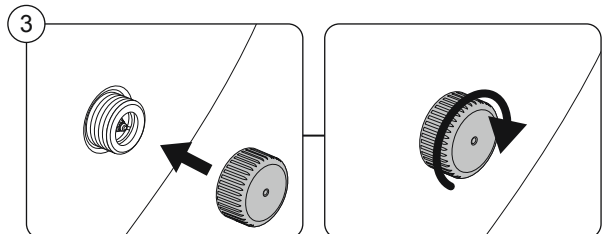
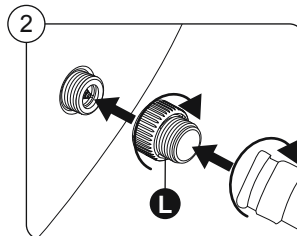
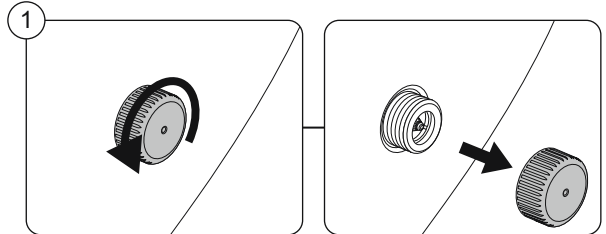




## Draining Instructions

For draining, follow the illustrations below. Drawings are for illustration purposes only. May not reflect actual product. Not to scale. Before draining your pool water, make sure that you are draining the water away from the house and any objects that are subject to water damage. Check local regulations for drainage bylaws.

1. Take off the Drain Valve Cap from the drain valve on the bottom of the **Pool Liner (K)**.
2. Insert the **Drain Valve Adapter (L)** into your garden hose and attach it to the drain valve.
3. After draining, please remember to put the Drain Valve Cap back onto the pool's drain valve.



## Cleaning Instructions

1. Rinse the pool liner with tap water to remove any residue left by chemicals or debris.
2. Leave the flattened liner in the sunlight until it's completely dry.
3. To remove the remaining water completely, wipe the pool liner with a dry cloth.

## Storage Instructions

Remove all accessories. Be sure that pool liner and accessories are completely clean and dry before storage. If the pool is not completely dry, mold may result and will damage the pool liner during the storage period.

Once the pool is completely dry, sprinkle with talcum powder to prevent the liner from sticking together.

We strongly recommend disassembling the pool when the ambient temperature is above 59°F / 15°C.

Fold the pool liner only if the ambient temperature is above 59°F / 15°C. Store the pool in a dry place with a moderate temperature between 59°F / 15°C and 100°F / 38°C and keep the pool liner and all accessories inside a cardboard box to better protect the PVC material during the winter period.

## WARRANTY INFORMATION

For support and product registration, please visit [bestwayusa.com/support](http://bestwayusa.com/support).

# Bestway | LIMITED WARRANTY

Bestway (Hong Kong) International Ltd. (“Bestway”) warrants to the original end-user purchaser in the United States and Canada that the products identified in the table below (“Products”) will be free from manufacturing defects for the warranty period identified for the Product in the table below. The warranty period begins on the date of purchase or the date of delivery of the Product to the original, end-user purchaser, whichever is later.

Because Bestway cannot control the quality of Products sold by unauthorized sellers, this warranty applies only to Products that were purchased from Bestway or a Bestway authorized seller in the United States and Canada, unless otherwise prohibited by law. Bestway reserves the right to reject warranty claims for Products purchased from unauthorized sellers, including unauthorized Internet sites.

This warranty does not cover any damage or defects due to:

- normal wear and tear;
- misuse, including use outside of the owner’s manual guidelines;
- alteration to the product by the end-user or any third party;
- improper storage or handling, including storage or handling not in accordance with the technical recommendations in the owner’s manual;
- negligence.

**Bestway will repair or replace the damaged or defective part(s) only.** Bestway will not repair or replace the complete set.

Purchasers of Products who wish to make a warranty claim based upon a Product defect should complete the warranty claim form found at <https://www.bestwayusa.com/ourwarranties>. You will be required to submit proof of purchase from an authorized seller. This warranty does not cover Products purchased as used or “second hand as is”. Bestway reserves the right to request additional information in order to process a warranty claim, including, but not limited to, Product serial numbers or photos of the Product or parts. You may also be required to return the Product or certain parts for additional testing or to otherwise assist in processing your claim.

There are no warranties which extend beyond those stated herein. ANY IMPLIED WARRANTIES THAT MAY BE APPLICABLE TO PRODUCTS, INCLUDING IMPLIED WARRANTIES OF MERCHANTABILITY OR FITNESS FOR A PARTICULAR PURPOSE, ARE LIMITED IN DURATION TO THE DURATION OF THE APPLICABLE EXPRESS WARRANTY PERIOD DESCRIBED HEREIN. UNDER NO CIRCUMSTANCES SHALL BESTWAY BE LIABLE FOR ANY SPECIAL, INCIDENTAL, OR CONSEQUENTIAL DAMAGES BASED UPON BREACH OF THIS LIMITED WARRANTY, BREACH OF CONTRACT OR STRICT LIABILITY. Some States do not allow limitations on how long an implied warranty lasts, or the exclusion or limitation of incidental or consequential damages, so the above limitations or exclusions may not apply to you.

This warranty gives you specific legal rights, and you may also have other rights which vary from State to State.

If you have any questions about whether a seller is authorized or any other questions regarding this warranty, the warranty period, the warranty claim process or the status of a warranty claim, please contact us through the form at <https://bestwayusa.com/support> or write us at: Bestway Customer Service – 3435 S. McQueen Road – Chandler, AZ 85286





**WE SUGGEST NOT TO RETURN  
THE PRODUCT TO THE STORE**

**QUESTIONS? PROBLEMS? MISSING PARTS?**  
For FAQ, manuals, videos or spare parts, please visit  
[bestwayusa.com/support](http://bestwayusa.com/support)



Please visit  
**BestwayUSA.com**

