



Countertop

# Ice Maker



## Instruction Booklet

*For your safety & enjoyment of this ice maker, always be certain you have read the instruction booklet carefully before using.*

# *The Maverick*

# PAGE CONTENTS

- Important Safety Information
- Product Information
- Control Panel Information
- Using Your Ice Maker
- Cleaning & Maintenance
- Product Specifications
- Troubleshooting

# IMPORTANT SAFETY INFORMATION

To reduce the risk of injury or property damage, please follow these safety precautions.

## WARNING



- Voltage power from outlet must match specifications on appliance nameplate.



- This appliance **must be** grounded.



- Using an extension cord may cause overheating and increase the risk of fire.

If an extension cord **MUST** be used:

- 1) **Only use an** extension cord with grounding plug.
- 2) The marked rating of an extension cord **must be** equal to or greater than the rating of this appliance.

- **Do not** operate if any component, including the cord or plug, is damaged.
- Unplug the unit before cleaning by hand.



- Only responsible and capable adults should operate the ice maker.
- **Do not** place the power cord where it could be pulled by children or pose a tripping hazard.
- Children should not be left unattended near the ice maker during operation.



- **Do not** use water that is micro-biologically unsafe or of unknown quality.



- **Do not** remove any safety, warning, or product information labels from the unit.



- **Do not** touch the evaporator with your hands while the ice maker is operating.
- **Do not** plug in or unplug the unit with wet hands.



- The unit **must be** placed and set up according to installation instructions before use. The unit is for indoor household use only.



- **Do not** store or use flammable vapors or liquids near the unit.
- **Do not** immerse any part of the unit in water.



- **Do not** attempt to disassemble, repair, modify or replace any part of the ice maker unless permitted by the manufacturer.

## WARNING



FIRE OR EXPLOSION HAZARD Flammable Refrigerant

This unit contains an isobutane refrigerant, also known as R600a, a natural gas with high environmental compatibility. However, it is also combustible. Adhere to the warnings below to reduce the risk of injury or property damage.



1. When handling, installing, and operating the unit, care should be taken to avoid damage to the refrigerant tubing.



2. Only dispose of the unit according to Federal and Local Regulations. Contact your local authorities for the environmentally safe disposal of the unit.



3. Keep ventilation openings around the unit's enclosure clear of obstruction.



4. **Do not** place the unit near heat sources such as an oven.



5. Ensure a minimum of three inches of clearance around the side and back walls of the unit for proper air circulation.



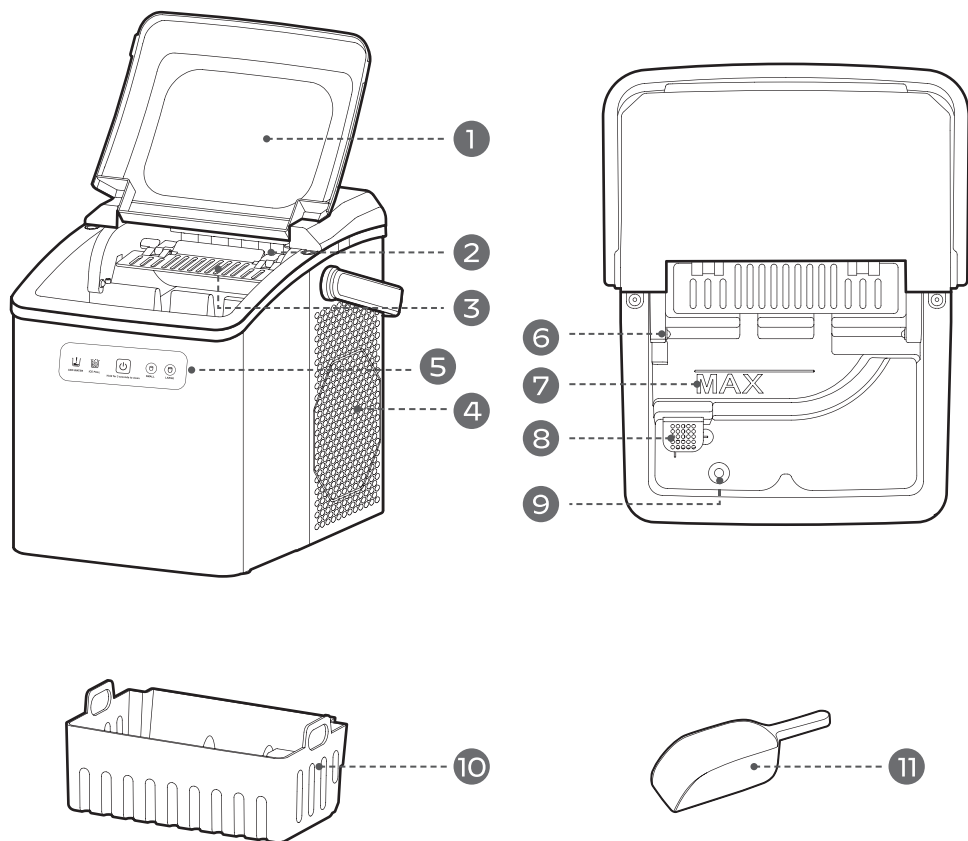
6. **Do not** place the unit in direct sunlight.

### ▲ ATTENTION

To avoid potential internal damage, please rest the ICE MAKER upright for 24 hours before plugging it in. It is an important procedure for producing great ice.

**DANGER-** RISK of Fire or Explosion. Flammable Refrigerant Used. Do Not Use Mechanical Devices to Defrost Ice Maker. Do Not Puncture Refrigerant Tubing.

# PRODUCT INFORMATION



**1.** Large Viewing Window

**2.** Evaporator

**3.** Ice Shovel

**4.** Air Exhaust Fan

**5.** Control Panel

**6.** Ice Full Sensor

**7.** Maximum Water Fill Line

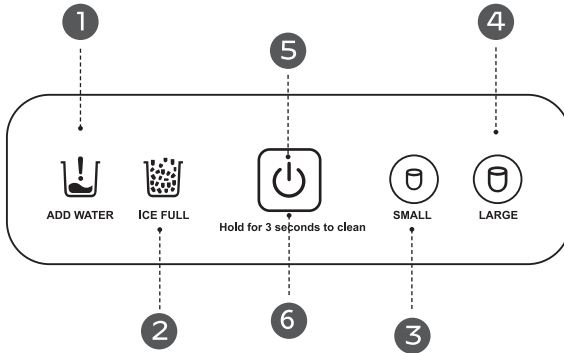
**8.** Filter


**9.** Drain Plug

**10.** Ice Basket

**11.** Ice Scoop

# CONTROL PANEL INFORMATION



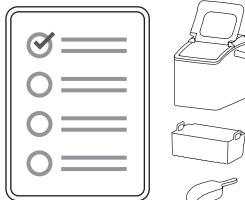
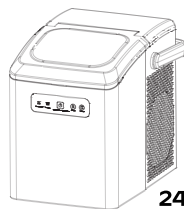
	Key (with Indicator)	Function
<b>1</b>	ADD WATER	The indicator light turns on when water level in the reservoir is too low
<b>2</b>	ICE FULL	The indicator light turns on when the ice basket is full
<b>3</b>	SMALL	Touch the SMALL button, the indicator light turns on and the small ice mode is selected
<b>4</b>	LARGE	Touch the LARGE button, the indicator light turns on and the large ice mode is selected
<b>5</b>	 ON/OFF	Touch the ON/OFF button to turn the ice maker on
		Touch the ON/OFF button to turn the ice maker off
		press and hold ON/OFF button for 3 seconds to enter the cleaning mode. During the cleaning process, INDICATOR light will keep on, SMALL and LARGE indicator light flashes alternately. After 15 minutes, INDICATOR light turns off when cycle is complete.
		During cleaning process, touch ON/OFF button, indicator light turn off, the ice maker exits the cleaning mode
<b>6</b>	INDICATOR LIGHT RECTANGLE	Indicator light rectangle remains solid white when start making ice
		Indicator light rectangle turns orange when need to add water
		Indicator light rectangle turns off when ice is full

# USING YOUR ICE MAKER

## BEFORE FIRST USE

**1.** Stand upright for 24hrs. Check for accessories.

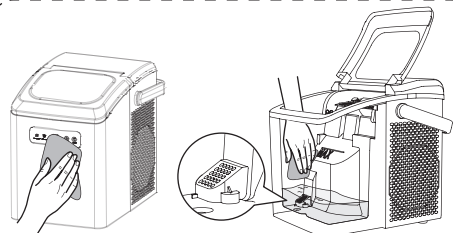
Missing parts?  
Contact us.



Customer Service

**2.** Clean the ice maker thoroughly before first use.

Discard first 4 cycles of ice.



**Note:** If not used in a long period, discard first 4 cycles of ice.

Use in locations 50°F ~ 90°F.

Perfect ice shape.



50°F ~ 90°F  
(10°C ~ 32°C)

More Cycles = Perfect Shape



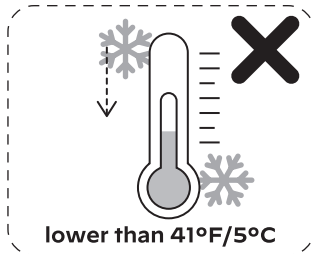
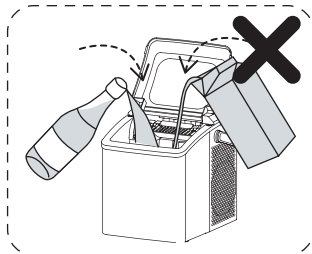
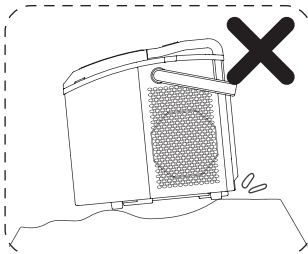
Due to temperature variations and other factors, ice quality should become stable after the first 1-3 cycles.

## 3. What Not To Do!

Unstable base.

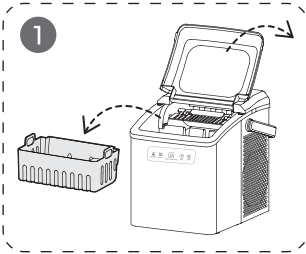
No other liquids  
(Drinking water only).

Do not use in  
high or low temps.

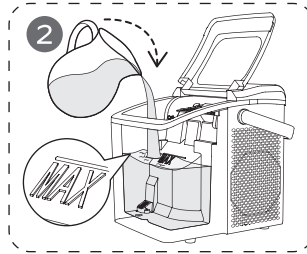


# HOW TO USE YOUR ICE MAKER

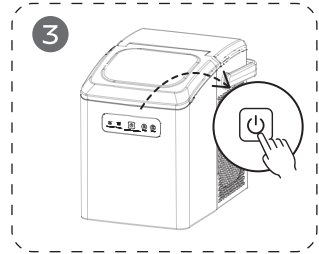
Open cover and remove basket.



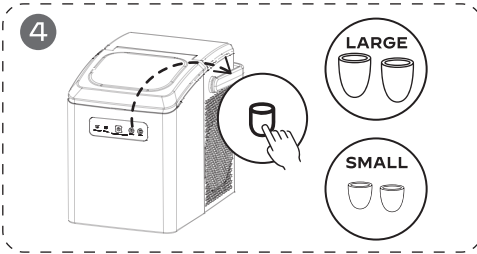
Pour water, do not exceed the "MAX" water mark.



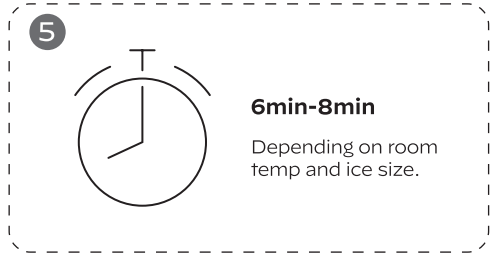
Press the **ON/OFF** button.



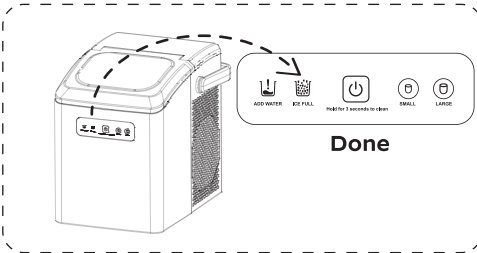
Choose ice cube size.



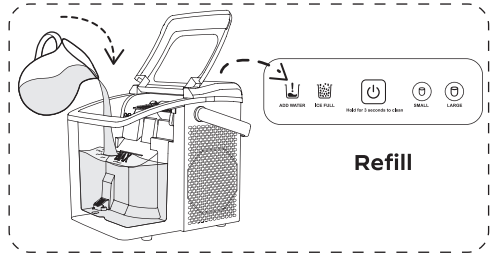
Wait 6min-8min.



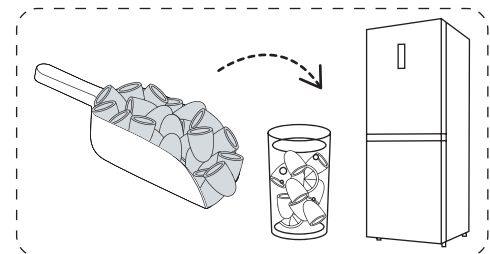
Ice full and ready when "ICE FULL" indicator is on.



When "ADD WATER" indicator is on, add water and press **ON/OFF** button.



Take ice cubes out in time to avoid melting.

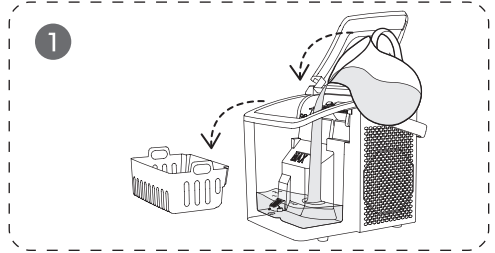


# CLEANING & MAINTENANCE

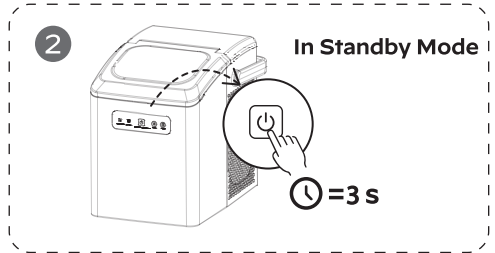
To keep your ice tasting fresh and the unit looking great, we recommend cleaning the unit once per week.

## SELF-CLEANING (15-MIN PROCESS)

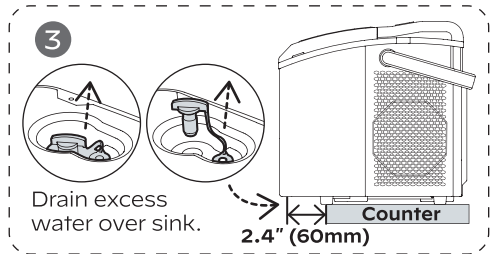
1. Remove the basket and add water.



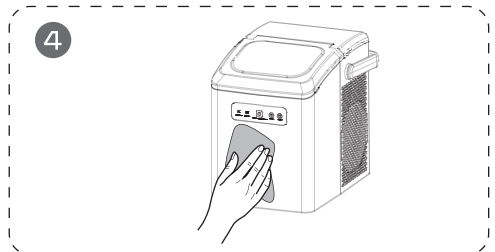
2. Press and hold the **ON/OFF** button for 3 sec to start self-cleaning.



3. Drain water reservoir.



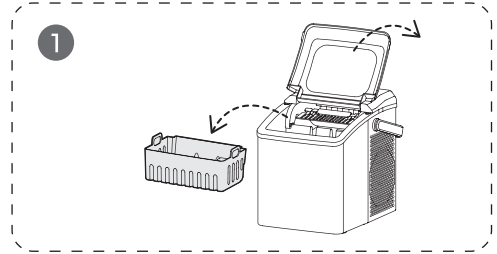
4. Clean exterior with cloth and mild dishwashing soap.



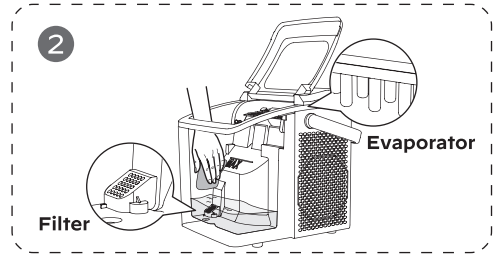
## MANUAL CLEANING

Turn off the unit and disconnect from power outlet before cleaning.

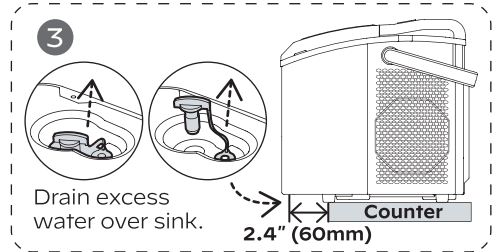
1. Remove the basket.



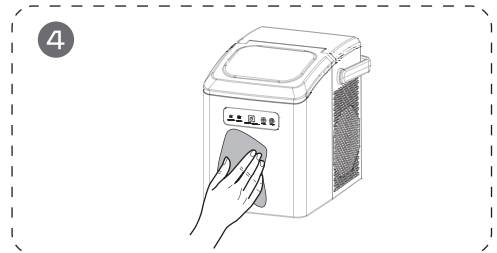
2. Clean using a soft cloth with warm water and vinegar. Clean the water filter, ice shovel and the evaporator to avoid dirt buildup.



3. Drain water reservoir.



4. Clean exterior with cloth and mild dishwashing soap.



### ⚠ DO's & DON'Ts while cleaning and maintaining

- **Do not** use organic solvent, boiled water, detergent, strong acid and strong alkali etc. for cleaning.
- When the unit is not to be used for a long duration, **drain** the water completely & dry the interior.
- **Store** in a well-ventilated area.

# PRODUCT SPECIFICATIONS

<b>Model</b>	CB24C
<b>Voltage/Frequency</b>	120V/60Hz
<b>Ice-Making Current</b>	1.5A
<b>Ice-Harvesting Current</b>	2A
<b>Water Reservoir</b>	1.3 L
<b>Ice Basket Capacity</b>	0.9 L
<b>Ice-Making Rate</b>	26lbs per Day
<b>Ice Shape</b>	Bullet
<b>Ice Size</b>	Small or Large
<b>Material</b>	ABS, PP
<b>Net Weight</b>	13.2lbs (6kg)
<b>Product Size</b>	282x205x269mm 11.1x8.07x10.59 inch

# TROUBLESHOOTING

<b>Problem</b>	<b>Possible Causes</b>	<b>Solution</b>
<b>Poor ice shape or quality.</b>	Poor heat dissipation.	Leave a 6-inch clearance on all sides of the ice maker for ventilation.
	The water temperature is too high.	Fill with water temperature between 46°F and 77°F.
	The ambient temperature is too high.	Use the ice maker at room temperatures between 50°F and 90°F.
	Evaporator deformation.	Please contact customer service.
<b>Ice maker creating loud noise.</b>	Ice maker has not been cleaned for a long time, which will form a sticky substance around the inlet of the water pump.	Clean every 1 to 2 weeks, using some neutral cleaning agents (such as mild vinegar solution and soapy water etc.)
	The unit will make a noise if there is not enough water when it is trying to pump.	Add more water.
	Fan or ice maker is damaged.	Please contact customer service.
	The water pump is damaged.	

<b>Problem</b>	<b>Possible Causes</b>	<b>Solution</b>
<b>“ICE FULL” light is on.</b>	Ice is blocking the infrared sensor.	Empty the ice basket.
	Infrared sensors do not work.	1. Wipe the infrared sensors clean. 2. Contact customer service if the infrared sensors still don't work.
<b>Ice sticks together.</b>	Making ice takes too long.	Stop making ice. After the ice melts, restart and try again.
	The water temperature is too low.	Fill with water temperature between 46°F and 77°F.
	Evaporator deformation.	Please contact customer service.
<b>Not making ice.</b>	Ambient or water temperature is too high.	Keep ambient temperature less than 90°F and fill with cold water.
	Water pump is damaged.	Please contact the customer service.
	Refrigerating system leaking.	
	Refrigerating system is blocked.	
	The fan stopped working.	
	The wires are loose.	
	The gears in the motor are broken.	

<b>Problem</b>	<b>Possible Causes</b>	<b>Solution</b>
<b>“ADD WATER” indicator light is on.</b>	Low water level or more water is needed.	Stop making ice, refill water, press <b>ON/OFF</b> button, then restart and try again.
	Water screen is blocked at the bottom of the water reservoir.	Run the self-cleaning cycle.
	Pump malfunction.	Please contact customer service.
	Water sensor malfunction.	Power off for 2 minutes , then restart the machine.

## ***Do***

- Do let the machine rest for 24 hours before the first use
  - Do remove the ice when machine is full & put it in your freezer
  - Do remove the ice after machine is powered off or unplugged
  - Do use the Auto Clean function regularly
  - Do wipe it out & keep dry when not in use
  - Do rest the machine after long use
  - Do remember the machine is quiet, not silent
- 

## ***Don't***

- Don't run the machine longer than 48 hrs consecutively
- Don't use the machine as ice storage
- Don't leave ice in the machine after it is powered off or unplugged
- Don't use the machine near heat sources
- Don't operate the machine in direct sunlight
- Don't put in any liquid other than drinkable water in the tank
- Don't turn the machine upside down or tilt it more than 45 degrees

[orgoproducts.com/product-registration](https://orgoproducts.com/product-registration)

Please note that countertop ice makers are designed to make ice, and not store it.

***Before using the ice maker for the first time, please wait for 24 hours after the unit has been leveled and positioned***

***For optimal results, please store ice in freezer as soon as the basket is full.***

***Empty the ice basket if the machine is powered off or unplugged.***

***Do not run the machine for more than 48 consecutive hours.***

orgoproducts.com



***Thank you for using Orgo products.***

*support@orgoproducts.com*

Please read the instruction booklet before using and keep for future reference.