



RTS

PLASTICS

A Division of RTS Companies Inc.

RTS PLASTICS ENGINEERED PLASTIC TANKS

PRODUCT GUIDE

WWW.RTSPLASTICS.COM

Version 1.1

RTS PLASTICS

A DIVISION OF RTS COMPANIES INC.

RTS Companies Inc. is a well-known North American manufacturer of custom and proprietary molded plastic products. RTS was originally formed in the year 2000 as a spinoff of the plastics division of Canbar, founded in 1872. Since then, RTS has continued with the tradition of producing high quality products for several different markets.

RTS Plastics is recognized as a leader in the manufacturing and distribution of a wide variety of storage solutions for industrial and agricultural markets; fiberglass tanks, polyethylene tanks, double wall tanks, and custom fabrication.

Our polyethylene tanks are North American manufactured to strict ISO 9001:2015 quality guidelines to ensure years of customer satisfaction. Impact-resistant, non-corrosive, one-piece seamless linear and cross linked polyethylene construction allows RTS tanks to be used for the storage of most liquid fertilizers, herbicides, insecticides and fungicides, as well as a wide range of industrial chemicals.

RTS tanks are manufactured using food grade approved resin to ensure safe storage of potable water. With nearly 50 years rotational molding experience and computer directed roto-molding machines, RTS is able to combine a quality product with a competitive price to meet the challenges facing the agricultural, industrial chemical, water and waste water treatment markets.

Rotational molding gives way to a variety of applications. Utilize the RTS group of experienced engineers in creating a custom fabrication product to fit your needs. Our full-service engineering group works with SolidWorks and AutoCAD software to design your product. From the initial concept, construction of the mold, through to shipping the product out the door, RTS will work with you in confidence on the project.

Talk to your RTS Plastics representative to find out more about the RTS tank line, or visit our website at www.rtsplastics.com.





CONTENTS

4	VERTICAL CLOSED TOP	16	SELF CONTAINED DAY TANKS
6	HORIZONTAL LEG TANKS	18	RECTANGULAR STORAGE & CONTAINMENT
8	UTILITY TANKS	20	DISPENSING TANKS
10	BELOW GRADE TANKS	22	CHEMTOTE / IBC
12	CONICAL / CONE BOTTOM	24	CUSTOM TANKS / MOLDING
14	VERTICAL OPEN TOP	26	FITTINGS / ADAPTORS

SERVICES

- Drawings and Specifications
- Quality Control - Quality Assurance
- Molded-in Inserts and Graphics
- Spin Welding
- U.L., U.N., C.S.A. Certification
- Drop Shipping services available
- Facility in Ontario Canada and Ohio USA
- Assembly is our specialty



RTS Manufactures to strict ISO 9001:2015 standards.

VERTICAL CLOSED TOP



AVAILABLE OPTIONS

- Non-Vented / Vented Manway
- Grad Strips / Gallon Markers
- Welded Fittings
- Bulkhead Fittings
- Fill Lines
- Goose Neck Vents
- Outlets

RTS Plastics' Vertical Closed Top Commercial Tanks are rotationally molded in one piece, using Medium Density Polyethylene (MDPE) in a wide range of sizes and capacities. Tanks are available

in Linear High Density Polyethylene (HDLPE) for an additional charge. All tanks are UV stabilized for long-term outdoor use and are perfect for storing non-corrosive and food-grade liquids.



VERTICAL CLOSED TOP TANKS

Model No.	Part No.				Dimensions	
		USG	IG	Litres	Dia	H
VST-22TB	1039-12223A-00-00	26	22	100	22	24
VST-22XTB	1089-42222A-00-00	26	22	100	22	22
VST-44TB	1039-12239A-00-00	53	44	200	22	39
VST-44XTB	1089-42238A-00-00	53	44	200	22	38
VST-50	1039-12434A-00-00	60	50	227	24	35
VST-66TB	1039-12255A-00-00	79	66	300	22	55
VST-66XTB	1089-12253A-00-00	79	66	300	22	53
VST-75	1039-12450A-00-00	90	75	340	24	50
VST-88TB	1039-12648A-00-00	106	88	400	26	52
VST-88XTB	1089-42653A-00-00	106	88	400	26	53
VST-110TB	1039-12661A-00-00	132	110	500	26	64
VST-110XTB	1089-42666A-00-00	132	110	500	26	66
VST-125	1039-13050A-00-00	150	125	568	30	50
VST-125	1039-34625A-00-00	150	125	568	46	26
VST-175	1039-13070A-00-00	210	175	800	30	76
VST-225XTB	1089-43092A-00-00	270	225	1022	30	92
VST-250	1039-34648A-00-00	300	250	1137	46	49
VST-350	1039-34662A-00-00	420	350	1591	46	62
VST-500	1039-34692A-00-00	600	500	2273	46	92
VST-500	1039-35862A-00-00	600	500	2273	58	63
VST-700	1039-48114A-00-00	850	700	3218	48	115
VST-1000	1039-36395A-00-00	1200	1000	4542	63	95
VST-1045	1039-38070A-00-00	1254	1045	4751	80	70
VST-1210	1039-38079A-00-00	1452	1210	5501	80	79
VST-1360	1039-38679A-00-00	1632	1360	6183	86	79
VST-2000	1039-90100A-00-00	2500	2000	9400	90	100
VST-2500	1039-90121A-00-00	3000	2500	11365	90	121

Notes:

Capacities and dimensions are approximate. See drawings for details.

Part No. 1039: 1.9 Specific Gravity, Part No. 1035: 1.5 Specific Gravity.

Available in natural, black and blue.

HORIZONTAL LEG TANKS



AVAILABLE OPTIONS

- Non-Vented / Vented Manway
- Grad Strips / Gallon Markers
- Welded Fittings
- Bulkhead Fittings
- Fill Lines
- Goose Neck Vents
- Outlets
- Removable Strainer Screens

RTS Plastics' Horizontal Leg Tanks are manufactured with a cylindrical low profile design with molded-in legs that do not require a steel cradle support. Resin is NSF.61 and FDA certified for potable water.

HORIZONTAL LEG TANKS

Model No.	Part No.				Dimensions		
		USG	IG	Litres	W	L	H
HLT-130	1099-13444A-00-00	156	130	591	34	44	38
HLT-250	1099-13476A-00-00	300	250	1137	34	76	38
HLT-500	1099-24884A-00-00	600	500	2271	48	84	53
HLT-900	1099-26096A-00-00	1080	900	3407	60	96	64

Notes:

Part No. 1095: 1.5 Specific Gravity Tank.

Part No. 1099: 1.9 Specific Gravity Tank.

Capacities and dimensions are approximate. See drawings for details.



UTILITY TANKS

DOORWAY TANK



LOW PROFILE TANK



PCO TANK



AVAILABLE OPTIONS

- Non-Vented / Vented Manway
- Grad Strips / Gallon Markers
- Welded Fittings
- Bulkhead Fittings
- Fill Lines
- Goose Neck Vents
- Outlets

RTS Plastics' Utility Tanks are rotationally molded in one piece, using Medium Density Polyethylene (MDPE) in a wide range of sizes and capacities. Tanks are available in Linear High Density

Polyethylene (HDLPE) for an additional charge. All tanks are UV stabilized for long-term outdoor use and are perfect for storing non-corrosive and food-grade liquids.

DOORWAY TANKS

Model No.	Part No.				Dimensions		
		USG	IG	Litres	W	L	H
DW-420	1629-20500A-00-00	500	420	1893	30	74	70
RWT-178	1099-02169A-00-00	220	178	833	20	70	48

Notes:

Capacities and dimensions are approximate. See drawings for details. Available in white and blue.



LOW PROFILE TANKS

Model No.	Part No.				Dimensions		
		USG	IG	Litres	W	L	H
LPT-250	1819-09556A-00-00	300	250	1136	56	95	16

Notes:

Capacities and dimensions are approximate. See drawings for details.



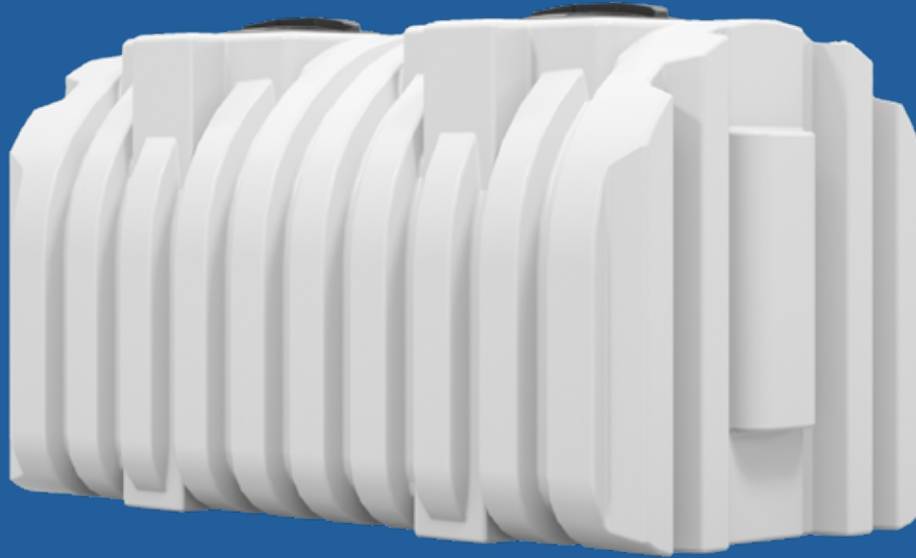
PCO TANKS

Model No.	Part No.				Dimensions		
		USG	IG	Litres	W	L	H
PCO-25	1619-11924A-00-00	30	25	114	19	25	22
PCO-40	1619-11938A-00-00	50	40	189	19	38	22
PCO-85	1619-53038A-00-00	100	85	379	30	38	30
PCO-125	1619-52648A-00-00	150	125	560	36	48	26
PCO-165	1619-53448A-00-00	198	165	750	36	48	34

Notes:

Capacities and dimensions are approximate. See drawings for details.

BELOW GRADE TANKS



AVAILABLE OPTIONS

- Baffle
- 14" high Riser kit including lids
- Tank is adaptable to all available risers, including Tuf-Tite and Poly-Lock
- Includes 4" uni-seal gromets for onsite plumbing
- Lifting lug for easy handling

RTS Plastics' Under Ground Tanks are rotationally molded in one piece, using Medium Density Polyethylene (MDPE) in a wide range

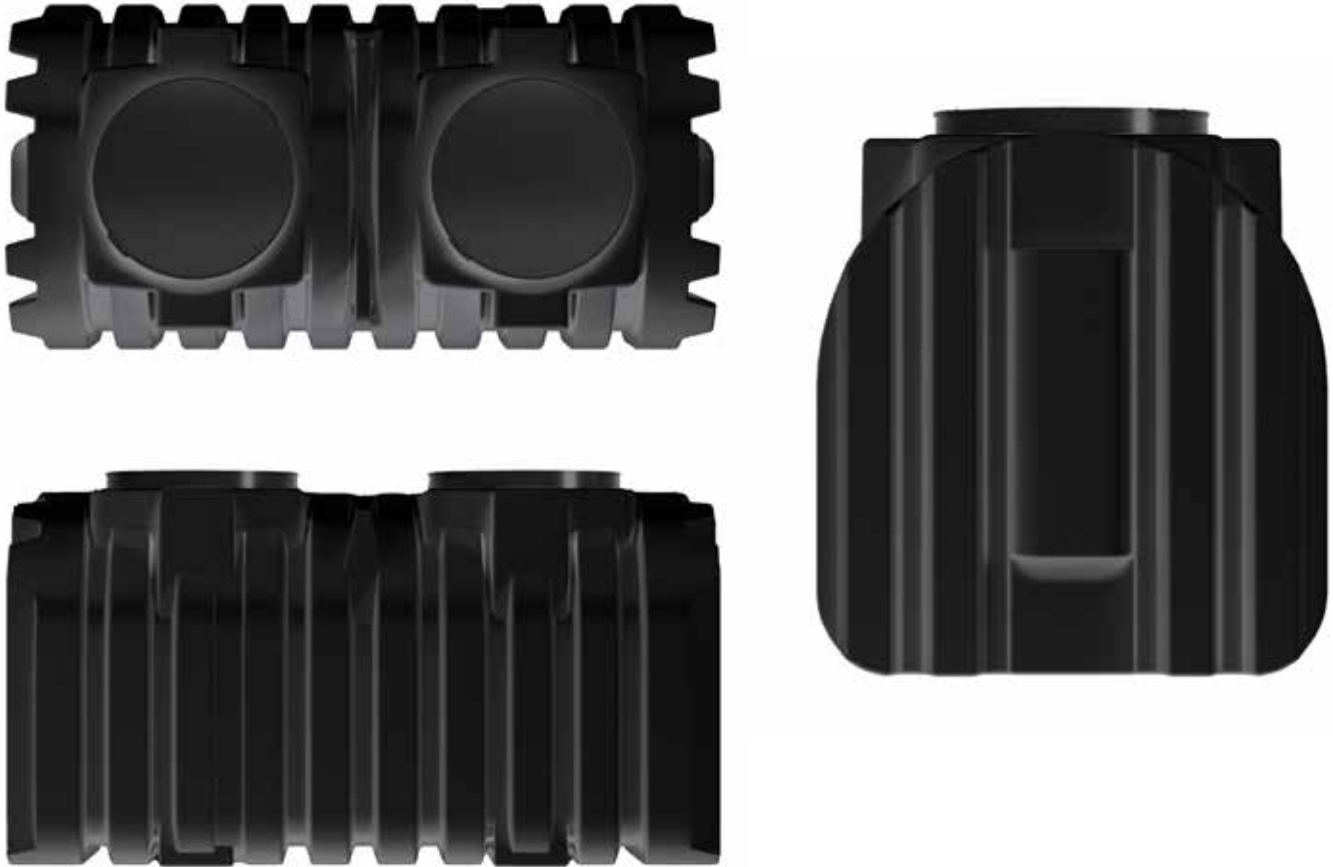
of sizes and capacities. Tanks are available in Linear High Density Polyethylene (HDLPE) for an additional charge.

SEPTIC TANKS

Model No.	Part No.				Dimensions		
		USG	IG	Litres	W	L	H
LPT-250BLK	1819-49556A-80-00	300	250	1136	56	95	16
SEP-600BLK	1639-00700A-80-00	700	585	2650	48	96	51

Notes:

Capacities and dimensions are approximate. See drawings for details.
Suitable for wastewater and septic.



CISTERN TANKS

Model No.	Part No.				Dimensions		
		USG	IG	Litres	W	L	H
LPT-250W	1819-49556A-00-00	300	250	1136	56	95	16
SEP-600W	1639-00700A-00-00	700	585	2650	48	96	51

Notes:

Capacities and dimensions are approximate. See drawings for details.
Suitable for potable water.

CONICAL / CONE BOTTOM



AVAILABLE OPTIONS

- Steel Stand
- Grad Strips / Gallon Markers
- Tiedwn Supports
- Vent Fittings
- Outlet Valves
- FDA Polyethelyne
- Sight Glass
- Non-Vented / Vented Manway
- 1/3 - 2/3 Hinged Lids

Conical (Cone Bottom) tanks are rotomolded in one piece (no seams) using Linear Virgin Polyethylene, and come in a variety of open or close top variations.

The cone bottoms are designed for quick and complete drainage.



CONICAL TANKS

Model No.	Part No.	Cone Degree				Dimensions	
			USG	IG	Litres	Dia	H
CBOT-26	1069-01732T-00-00	30	31	26	118	18	36
CBOT-60	1069-02245T-00-00	30	72	60	273	23	52
CBOT-200	1069-03656T-00-00	30	240	200	909	36	68
CBOT-300	1069-04844T-00-00	30	360	300	1360	48	72
CBOT-400	1069-04860T-00-00	30	480	400	1820	48	72
CBOT-550	1069-04884T-0000	30	660	550	2500	48	95

Notes:

Part No. 1069: 1.9 Specific Gravity, Part No. 1065: 1.5 Specific Gravity.
 Capacities and dimensions are approximate. See drawings for details.
 CBOT: Open Top Tank / CBT: Closed Top Tank.
 Dimensions are for tank only, overall height as per tank drawings.



VERTICAL OPEN TOP



AVAILABLE OPTIONS

- Bolt and Gasket Cover
- Welded Flat Cover
- Hinged Flat Cover
- Slip on Lid
- Grad Strips / Gallon Markers

RTS Plastics' Vertical Open Top Commercial Tanks are rotationally molded in one piece, using Medium Density Polyethylene (MDPE) in a wide range of sizes and capacities. Tanks are available

in Linear High Density Polyethylene (HDLPE) for an additional charge. All tanks are UV stabilized for long-term outdoor use and are perfect for storing non-corrosive and food-grade liquids.



VERTICAL OPEN TOP TANKS

Model No.	Part No.				Dimensions	
		USG	IG	Litres	Dia	H
VOT-5	1019-01115T-00-00	6	5	23	11	15
VOT-12	1019-01328T-00-00	14	12	55	13	27
VOT-15	1019-01624T-00-00	18	15	68	16	24
VOT-15	1019-01718T-00-00	18	15	68	17	18
VOT-20	1019-01724T-00-00	24	20	91	17	24
VOT-25	1019-01634T-00-00	30	25	114	16	34
VOT-25	1019-01730T-00-00	30	25	114	17	30
VOT-30	1019-01833T-00-00	36	30	136	18	33
VOT-30	1019-02028T-00-00	36	30	136	20	28
VOT-30	1019-02222T-00-00	36	30	136	22	22
VOT-45	1019-02233T-00-00	54	45	205	22	33
VOT-60	1019-02244T-00-00	72	60	273	22	45
VOT-75	1019-02642T-00-00	90	75	341	26	42
VOT-75	1019-02448T-00-00	90	75	341	24	48
VOT-100	1019-03040T-00-00	120	100	455	30	40
VOT-125	1019-03050T-00-00	150	125	568	30	50
VOT-125	1019-03635T-00-00	150	125	568	36	35
VOT-150	1019-03642T-00-00	180	150	682	36	42
VOT-175	1019-03648T-00-00	210	175	796	36	48
VOT-175	1019-03070T-00-00	214	178	809	30	70
VOT-200	1019-03656T-00-00	240	200	909	36	56
VOT-250	1019-04252T-00-00	300	250	1137	42	52
VOT-300	1019-04849T-00-00	360	300	1364	48	49
VOT-400	1019-04862T-00-00	480	400	1818	48	62
VOT-500	1019-05260T-00-00	600	500	2273	52	60
VOT-550	1019-04484T-00-00	660	550	2498	48	84
VOT-600	1019-06065T-00-00	720	600	2728	60	65
VOT-750	1019-07254T-00-00	900	750	3410	72	54
VOT-1000	1019-07270T-00-00	1200	1000	4546	72	70

Notes:

Capacities and dimensions are approximate. See drawings for details.

Part No. 1019: 1.9 Specific Gravity, Part No. 1015: 1.5 Specific Gravity.

SELF CONTAINED DAY TANKS

INTERMEDIATE BULK CONTAINERS



AVAILABLE OPTIONS

- Molded-in Cradle for Pump
- 6" or 8" Threaded Lid
- Primary Self Contained Tank
- Grad Strips / Gallon Markers
- Containment Basin

RTS Plastics' Self Contained Day Tanks are designed to fit through a standard doorway and come with a 6" Threaded Lid or 8" Screw Top Manway.

SELF CONTAINED DAY TANKS - CIRCULAR CONTAINMENT

Model No.	Part No.				Overall Dimensions	
		USG	IG	Litres	Dia	H
SCDTC-22	1829-42222A-00-00	26	22	100	29	26
SCDTC-44	1829-42238A-00-00	53	44	200	29	38
SCDTC-66	1829-42253A-00-00	79	66	300	29	53
SCDTC-88	1829-42653A-00-00	106	88	400	34	53
SCDTC-110	1829-42666A-00-00	132	110	500	34	66

SELF CONTAINED DAY TANKS - RECTANGULAR CONTAINMENT

Model No.	Part No.				Overall Dimensions		
		USG	IG	Litres	Length	Width	Height
SCDTR-22	1839-42222A-00-00	26	22	100	27	27	22
SCDTR-44	1839-42238A-00-00	53	44	200	27	27	38
SCDTR-66	1839-42253A-00-00	79	66	300	34	34	53
SCDTR-88	1839-42653A-00-00	106	88	400	39	33	53
SCDTR-110	1839-42666A-00-00	132	110	500	39	33	66

Notes:

Chemical compatibility determines the Resin and Specific Gravity.

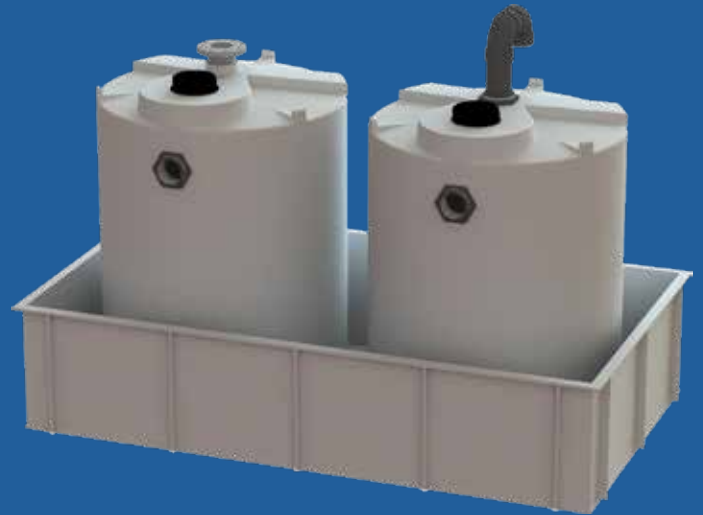
Tanks available in 1.5 and 1.9 Specific Gravity.

Capacities and dimensions are approximate. See drawings for details.



RECTANGULAR STORAGE & CONTAINMENT

CLOSED AND OPEN TOP MODELS



AVAILABLE OPTIONS

- Bolt and Gasket Cover
- Welded Flat Cover
- Hinged Flat Cover
- Slip on Lid
- Grad Strips / Gallon Markers

*Rectangular Containment Tank is shown holding Vertical Storage Tank(s) which are only shown for visual effect and are not included

RTS Plastics' Rectangular Storage & Containment Tanks are rotationally molded in one piece, using Medium Density Polyethylene (MDPE) in a wide range of sizes and capacities. Tanks are available in Linear High Density Polyethylene (HDLPE) for an additional charge.

These poly tanks are great for secondary containment basins and material handling. Available in a variety of shapes and sizes. Custom fabrication is also an option with these tanks if standard dimensional units do not meet your requirements.

OPEN TOP RECTANGULAR STORAGE AND CONTAINMENT TANKS

Model No.	Part No.	Capacity			Dimensions		
		USG	IG	Litres	W	L	H
RT-6	1049-12122T-00-00	7	6	27	12	12	12
RT-12	1049-24122T-00-00	14	12	55	24	12	12
RT-14	1049-18128T-00-00	17	14	64	18	12	18
RT-18	1049-18124T-00-00	22	18	82	18	12	24
RT-20	1049-24104T-00-00	24	20	91	24	10	24
RT-28	1049-18184T-00-00	34	28	127	18	18	24
RT-28	1049-24188T-00-00	34	28	127	24	18	18
RT-36	1049-24248T-00-00	43	36	164	24	24	18
RT-50	1049-48124T-00-00	60	50	227	48	12	24
RT-56	1049-24186T-00-00	67	56	255	24	18	36
RT-62 - Ribbed	1049-34232T-00-00	74	62	282	34	23	22
RT-62	1049-24243T-00-00	74	62	282	24	24	30
RT-62	1049-30244T-00-00	74	62	282	30	24	25
RT-78	1049-30304T-00-00	94	78	355	30	30	24
RT-135	1049-46293T-00-00	165	135	625	46	29	29
RT-140	1049-36306T-00-00	168	140	636	36	30	36
RT-145	1049-47414T-00-00	174	145	659	45	39	23
RT-300	1049-73383T-00-00	360	300	1375	73	38	32
RT-300-IBC	2515-00101T-00-00	360	300	1364	66	66	24

Notes:

Capacities and dimensions are approximate. See drawings for details.

Rectangular tanks are not self supporting. A frame should be used to support the side wall when full of liquid.



DISPENSING TANKS



AVAILABLE OPTIONS

- Non-vented / vented manway
- Grad strips / gallon markers
- Welded fittings
- Bulkhead fittings
- Fill lines
- Goose neck vents
- Outlets

RTS Plastics' new line of Dispensing Tanks are rotationally molded in one piece, using Medium Density Polyethylene (MDPE) in 4 sizes. Tanks are available in Linear High Density Polyethylene

(HDLPE) for an additional charge. All tanks are UV stabilized for long-term outdoor use and are perfect for storing non-corrosive and food-grade liquids.

DISPENSING TANK ASSEMBLIES

Model No.	Part No.	Capacity			Overall Dimensions	
		USG	IG	Litres	Dia	H
DSPT-50	1865-12434A-00-00	59	50	227	24	56
DSPT-75	1865-12450A-00-00	90	75	341	24	72
DSPT-125	1865-13050A-00-00	150	125	568	30	72
DSPT-175	1865-13070A-00-00	210	175	795	30	92

Includes: Tank, Stand, 6" Cap with 2" Breather, EPDM Gasket, 1" Welded Boss, Galvanized Nipple and Brass Gate Valve.

DISPENSING TANK STANDS

Model No.	Part No.	Dia	H
24" Stand	1850-02400T-80-00	24	21
30" Stand	1850-03000T-80-00	30	21

Notes:

Available in black and blue.



CHEMTOTES® / IBC TANKS



AVAILABLE OPTIONS

- Four interlocking corner lugs allow for top lifting and easy stacking
- 6" screw cap with appropriate gasket
- The CHEMTOTE bottle is rotomolded from virgin food grade polyethylene
- Chemtotes / IBC Tanks stack 3 high when full
- Chemtote is enclosed in a heavy-duty stackable steel frame
- The outlet valve, is protected from accidents during shipping by a sliding steel door
- 4 bolt flanged outlet valve arrangement available in a variety of materials and gaskets

The series 300 CHEMTOTE® / IBC Tank is designed, tested, manufactured, and approved to satisfy the National Standard of Canada CAN/CGSB 43.146-94 UN approval for the transportation of regulated liquids.

These lightweight, durable and corrosive resistant tanks are ideal for both hazardous and non-hazardous liquid applications, and are available in a wide variety of shapes and sizes. Rotationally molded in wall thickness up to a 1/2 inch, these tanks provide some of the industry's highest useful life-to-cost ratios.

DANGEROUS & NON-DANGEROUS FOOD GRADE LIQUIDS

- Capacities ranging from 150-283 Imperial Gallons (681-1284 Litres)
- Excellent alternative to 45 Gallon drums
- Wide variety of valve assemblies, lids, vents and gasket material available
- Units stack 3 high when full
- U.N approved for worldwide transportation of dangerous goods up to 1.9 specific gravity

VISCOUS LIQUIDS

- Popular 270 Imperial Gallon (1226 Litre) capacity
- Store and ship viscous liquids, such as honey, molasses, syrups and concentrates
- Wide variety of valve assemblies, lids, vents and gasket material available

OPTIONS

- Poly-Pro Valve
- Stainless Steel Valve
- Carbon Steel Valve
- Auto Venting
- Brass Valva
- 4 Way Anti-tip Plates
- Laser Cut Identification Plates
- Fully Enclosed Metal Sides
- Camloc or NPT Valve Outlet
- Variety of Gasket Types

Note: Due to many various designs, prices are quoted per application.

Volume Specifications:				Dimensions:	
CT-306	150 Imp. Gal	170 US Gal	681 Litres	CT-306	40" W x 48" L x 44" H
CT-308	200 Imp. Gal	250 US Gal	908 Litres	CT-308	40" W x 48" L x 54" H
CT-305	250 Imp. Gal	300 US Gal	1135 Litres	CT-305	40" W x 48" L x 63" H
CT-309	270 Imp. Gal	323 US Gal	1226 Litres	CT-309	40" W x 48" L x 63" H
CT-304	270 Imp. Gal	323 US Gal	1225 Litres	CT-307	40" W x 48" L x 65" H
CT-307	283 Imp. Gal	339 US Gal	1284 Litres	CT-304	41" W x 51" L x 64" H
CT-404	290 Imp. Gal	380 US Gal	1324 Litres	CT-404	43" W x 52" L x 58" H



CUSTOM TANKS / MOLDING



Since 2000, RTS Companies' plastics division has produced high quality Rotationally Molded plastic parts for customers throughout North America.

With state-of-the-art facilities in Ontario Canada and Ohio USA, our trained engineers, developers and project managers produce a range of custom and proprietary tanks, liquid containment vessels, parts and custom molded products.

INDUSTRIES SERVED

- Medical
- Municipal Government
- Agriculture
- Waste Management
- Food Processing
- Chemical Labs
- Fish Farming
- Tool and Die

SERVICES

- Drawings and Specifications
- Quality Control - Quality Assurance
- Molded-in Inserts and Graphics
- Spin Welding
- U.I., U.N., C.S.A. Certifications
- Drop Shipping Services
- Facilities in Canada and USA
- Full Assembly
- ISO Certified Company

PRODUCTS

- Fuel Tanks
- Material Handling Containers
- Hazardous Chemical Containment
- Machine and Equipment Housing



FITTINGS & ADAPTORS

RTS Plastics' Tanks can be manufactured and delivered with any number of fittings or adaptors that your application requires, including:

1 WELD IN PLACE FITTINGS



FNPT Half Coupling

Size	Part No.
1/2"	9701-010500-00-00
3/4"	9701-010700-00-00
1"	9701-011000-00-00
1 1/2"	9701-011500-00-00
2"	9701-012000-00-00
3"	9701-013000-00-00
4"	9701-014000-00-00



FNPT Full Coupling

Size	Part No.
1/2"	9701-030500-00-00
3/4"	9701-030700-00-00
1"	9701-031000-00-00
1 1/2"	9701-031500-00-00
2"	9701-032000-00-00
3"	9701-033000-00-00
4"	9701-034000-00-00



HDPE Flange Face

Size	Part No.
1/2"	9703-010500-00-10
3/4"	9703-010700-00-10
1"	9703-011000-00-10
1 1/2"	9703-011500-00-10
2"	9703-012000-00-10

2

PVC BOLTED / GASKET FNPT FLANGE FITTINGS



EPDM Gasket / Stainless Bolts

Size	Part No.
1"	9703-101000-65-02
1 1/2"	9703-101500-65-02
2"	9703-102000-65-02
3"	9703-103000-65-02
4"	9703-104000-65-02
6"	9703-106000-65-02
8"	9703-108000-65-02

Viton Gasket / Stainless Bolts

Size	Part No.
1"	9703-101000-66-02
1 1/2"	9703-101500-66-02
2"	9703-102000-66-02
3"	9703-103000-66-02
4"	9703-104000-66-02
6"	9703-106000-66-02
8"	9703-108000-66-02

EPDM Gasket / Titanium Bolts

Size	Part No.
1"	9703-071000-65-02
1 1/2"	9703-071500-65-02
2"	9703-072000-65-02
3"	9703-073000-65-02
4"	9703-074000-65-02
6"	9703-076000-65-02
8"	9703-078000-65-02

Viton Gasket / Titanium Bolts

Size	Part No.
1"	9703-071000-66-02
1 1/2"	9703-071500-66-02
2"	9703-072000-66-02
3"	9703-073000-66-02
4"	9703-074000-66-02
6"	9703-076000-66-02
8"	9703-078000-66-02

EPDM Gasket / Hasteloy Bolt

Size	Part No.
1"	9703-111000-65-02
1 1/2"	9703-111500-65-02
2"	9703-112000-65-02
3"	9703-113000-65-02
4"	9703-114000-65-02
6"	9703-116000-65-02
8"	9703-118000-65-02

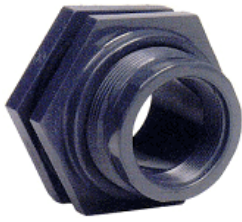
Viton Gasket / Hasteloy Bolt

Size	Part No.
1"	9703-271000-66-02
1 1/2"	9703-271500-66-02
2"	9703-272000-66-02
3"	9703-273000-66-02
4"	9703-274000-66-02
6"	9703-276000-66-02
8"	9703-11800-66-02

3

BULKHEAD FITTINGS

PVC Bulkhead / EPDM Gasket

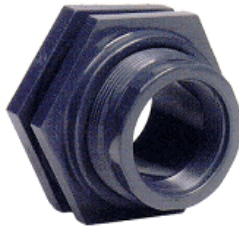


Size	Part No.
1/2"	9702-010500-65-02
3/4"	9702-010700-65-02
1"	9702-011000-65-02
1 1/4"	9702-011200-65-02
1 1/2"	9702-011500-65-02
2"	9702-012000-65-02
3"	9702-013000-65-02
4"	9702-014000-65-02

PVC Bulkhead / Viton Gasket

Size	Part No.
1/2"	9702-010500-66-02
3/4"	9702-010700-66-02
1"	9702-011000-66-02
1 1/4"	9702-011200-66-02
1 1/2"	9702-011500-66-02
2"	9702-012000-66-02
3"	9702-013000-66-02
4"	9702-014000-66-02

Poly-Pro Bulkhead / EPDM Gasket



Size	Part No.
1/2"	9702-010500-65-01
3/4"	9702-010700-65-01
1"	9702-011000-65-01
1 1/4"	9702-011200-65-01
1 1/2"	9702-011500-65-01
2"	9702-012000-65-01
3"	9702-013000-65-01
4"	9702-014000-65-01

Poly-Pro Bulkhead / Viton Gasket

Size	Part No.
1/2"	9702-010500-66-01
3/4"	9702-010700-66-01
1"	9702-011000-66-01
1 1/4"	9702-011200-66-01
1 1/2"	9702-011500-66-01
2"	9702-012000-66-01
3"	9702-013000-66-01

CPVC and PVDF available. Consult RTS for pricing.



4

SELF ALIGNING DOME BULKHEAD FITTINGS



Size	Part No.
1"	9702-031000-65-02
2"	9702-032000-65-02
3"	9702-033000-65-02

Size	Part No.
1"	9702-031000-66-02
2"	9702-032000-66-02
3"	9702-033000-66-02

5

PVC FLANGE ADAPTORS



Size	Part No.
1"	9703-531000-00-02
1 1/2"	9703-531500-00-02
4"	9703-534000-00-02
6"	9703-536000-00-02

Size	Part No.
1"	9703-581000-00-02
1 1/2"	9703-581500-00-02
4"	9703-584000-00-02
6"	9703-586000-00-02

6

"BELLOW" TYPE FITTINGS FOR VERTICAL TANKS

EPDM Gasket / Titanium Bolts

Size	Part No.
2"	9703-402000-65-02
3"	9703-403000-65-02
4"	9703-404000-65-02

Viton Gasket / Titanium Bolts

Size	Part No.
2"	9703-402000-66-02
3"	9703-403000-66-02
4"	9703-404000-66-02

EPDM Gasket / C-276 Bolts

Size	Part No.
2"	9703-392000-65-02
3"	9703-393000-65-02
4"	9703-394000-65-02

Viton Gasket / C-276 Bolts

Size	Part No.
2"	9703-392000-66-02
3"	9703-393000-66-02
4"	9703-394000-66-02



EPDM Gasket / Stainless Bolts

Size	Part No.
2"	9703-382000-65-02
3"	9703-383000-65-02
4"	9703-384000-65-02

Viton Gasket / Stainless Bolts

Size	Part No.
2"	9703-382000-66-02
3"	9703-383000-66-02
4"	9703-384000-66-02

Bellows type connection includes tank fitting.

7

“BELLOW” FLANGE ADAPTOR FITTINGS

Threaded / Stainless Bolts

Size	Part No.
2"	9703-602000-00-02
3"	9703-603000-00-02
4"	9703-604000-00-02

Socket / Stainless Bolts

Size	Part No.
2"	9703-632000-00-02
3"	9703-633000-00-02
4"	9703-634000-00-02

Threaded / Titanium Bolts

Size	Part No.
2"	9703-622000-00-02
3"	9703-623000-00-02
4"	9703-624000-00-02

Socket / Titanium Bolts

Size	Part No.
2"	9703-652000-00-02
3"	9703-653000-00-02
4"	9703-654000-00-02



Threaded / C-276 Bolts

Size	Part No.
2"	9703-612000-00-02
3"	9703-613000-00-02
4"	9703-614000-00-02

Socket / C-276 Bolts

Size	Part No.
2"	9703-642000-00-02
3"	9703-643000-00-02
4"	9703-644000-00-02

Notes:

Consult industrial tank specification for proper fitting locations.
Consult chemical resistance chart for chemical compatibility.

8

WELDED FLAT SHEET COVERS FOR OPEN TOP TANKS

Size	Bolt/Gasket	With 16" Manway	With 6" Manway	1/3 -2/3 Hinge
22"	yes	yes	yes	yes
26"	yes	yes	yes	yes
30"	yes	yes	yes	yes
36"	yes	yes	yes	yes
42"	yes	yes	yes	yes
48"	yes	yes	yes	yes
60"	yes	yes	yes	yes
72"	yes	yes	yes	yes



Notes:

3/8" and 1/2" thick lid up to 42" diameter, 1/2" thick for 48", 60", & 72". Bolt and Gasket cover assembled with poly bolts and gasket. 6" caps are Poly-Pro threaded with EPDM gasket, 16" have 4" removable centre vent.





CANADA

📍 1027 Industrial Place
St. Clements, ON N0B 2M0
☎ 1-519-699-0022 | 1-800-663-2803
📠 1-519-699-0027

USA

📍 2900 Industrial Park Drive
Austinburg, OH 44010
☎ 1-440-275-3077 | 1-888-641-3077
📠 1-440-275-3080

WWW.RTSPLASTICS.COM
INFO@RTSCOMPANIESINC.COM

