

TIE DOWN

MANUFACTURING INGENUITY

Raised Garden Box Installation

Tie Down Raised Garden Beds – Own the Edge of Your Garden

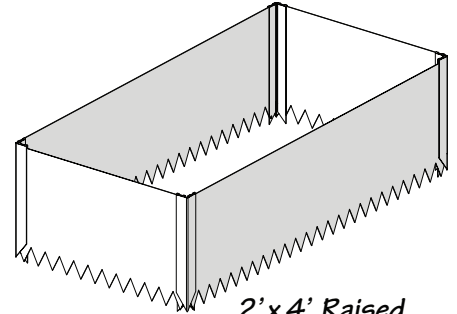
Tie Down is here to help you take the lead with our durable metal Raised Garden Beds. Constructed from solid steel, these beds allow you to quickly set up a garden in the sunny location of your choice.

Raised bed planters offer numerous advantages over traditional in-ground gardens, including:

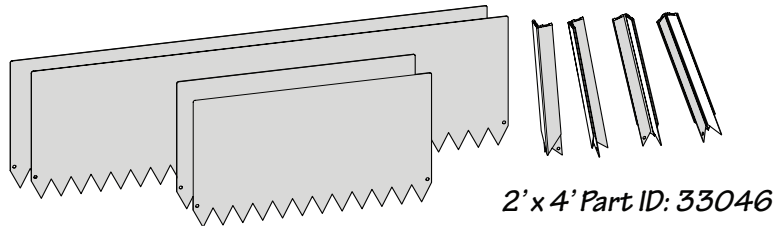
- Increased yield
- Earlier planting and later harvest times
- Improved soil control and drainage

Enjoy a productive and attractive garden space in your backyard.

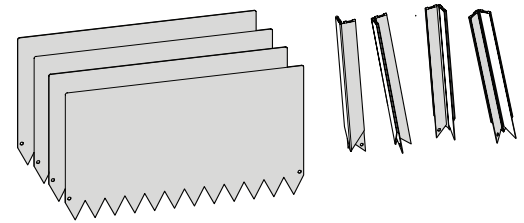
Our easy-to-assemble Garden Box strips feature sharp teeth that cut into the soil for fast, hassle-free installation. Designed to complement both traditional and modern landscapes, Tie Down's Raised Garden Box solutions deliver long-lasting performance with style.



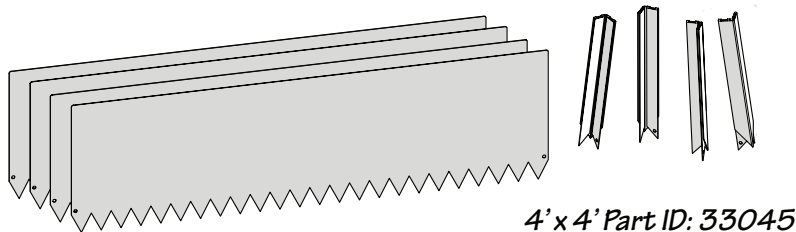
2' x 4' Raised Garden Box Kit



2' x 4' Part ID: 33046

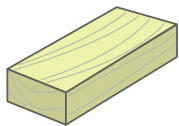


2' x 2' Part ID: 33047



4' x 4' Part ID: 33045

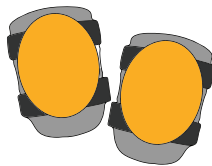
Recommend Tools



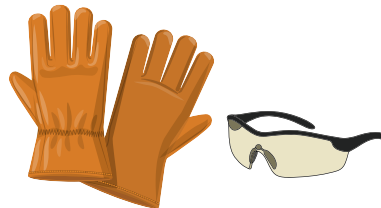
Wood Block



Hammer or Mallet



Knee Pads



Work Gloves & Safety Glasses



On Line Instructions

WARNING: This product can expose you to chemicals including Nickel, which is known to the State of California to cause cancer. For more information go to: www.P65Warnings.ca.gov

Instruction 08482
EC2087; Rev. 5/20/25

TIE DOWN

MANUFACTURING INGENUITY

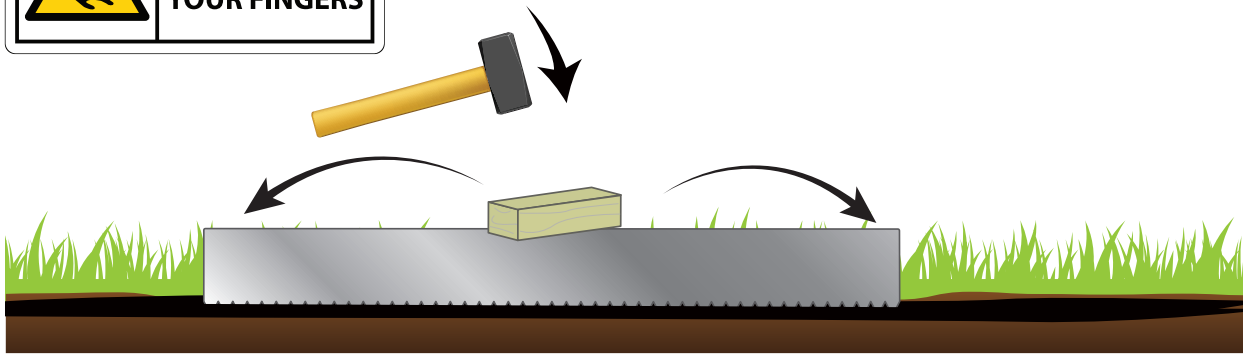
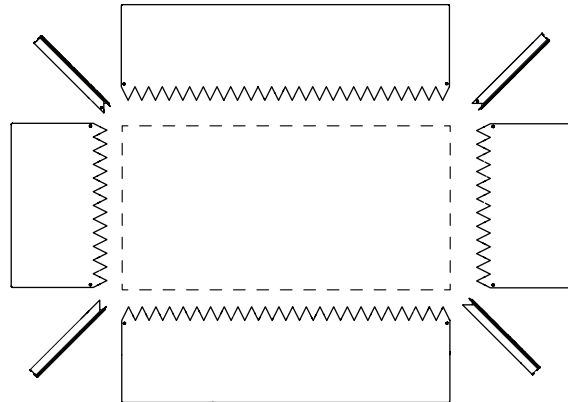
404-344-0000 • www.tiedown.com
605 Stonehill Drive SW, Atlanta, GA 30336
sales@tiedown.com

Raised Garden Bed Box Installation

STEP 1

Select a suitable location for your garden box, ensuring it receives adequate sunlight and has proper drainage.

CAREFULLY LAY OUT all garden box components according to the size and configuration of the box you purchased. Verify that all parts are present and positioned correctly before beginning assembly.



STEP 2

Place a wood block over the center of the garden plate and tap it down using a hammer. Next, move to one end of the plate and tap it into the ground, then proceed to the opposite end and do the same. Continue alternating from front to back, driving the plate into the ground evenly until it reaches the desired depth. Repeat this process for the remaining sides of the garden box. Ensure all sides are positioned at 90-degree angles and that the top edges of each plate are level with one another.

STEP 3

Position the corner piece over the two adjoining side box plates, ensuring the metal plates are at a 90-degree angle and level with each other. Slide the corner piece fully over the ends of both side plates. Place a wood block on top of the corner piece and gently tap it down with a hammer until it is securely seated.

