



User Manual for Parcel Drop Box

Read all instructions before using drop box.

WARNING

Barska does not guarantee that its products will absolutely stop theft, vandalism, burglary. Our products are only a deterrent to such acts.

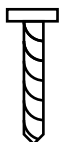
The parcel drop box must be mounted to the floor. Be aware of the load bearing. Failure to do so can result in personal injury and/or damage to property.

Mounting Instructions

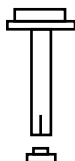
Use appropriate tools when performing work and always use eye protection floor mounting.

Mounting Screws:

For Wood x 4



For Concrete x 4

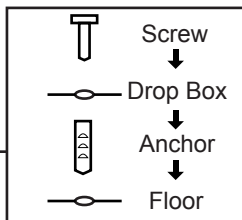
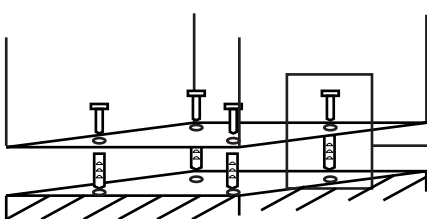
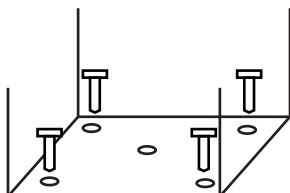


x4



Floor Mounting

- Mark the exact position onto the floor.
- Use proper drill tools depending on the type of floor you are mounting the drop box (wood, tile, or concrete).
- Drill the appropriate size holes for the anchors you are using.
- Carefully press the anchor into the holes at this time.



- Mount the safe by running screws from inside of the safe and securing to anchors; ensure the parcel drop box mounted securely.

Plate

Optional



Hole Plate

Propose is fixed hole. It can be placed under the drop box.

NOTE

Apply instruction label to the front of the delivery box. This label will show delivery people how to secure your packages.

Parcel Delivery

1. Open the door and put parcel in box
2. Close the door and push the left side button lock
3. The door will be locked

