

TIE DOWN

MANUFACTURING INGENUITY



MARINE CATALOG





TIE DOWN

MANUFACTURING INGENUITY

Tie Down is an American manufacturing and engineering company based in Atlanta, Georgia. Since 1969, we've focused on designing and building reliable products that help our customers work safer and more efficiently.

We're known for our dedicated team of engineers, hands-on approach, and high standards. Our design and production processes are certified under ISO 9001:2015, reflecting our commitment to quality at every step.

Every product is carefully designed and tested using cutting-edge CAD technology to ensure it performs in the real world. Through modern tools and real-world validation, we make sure our products meet expectations every time. We're proud to keep our manufacturing local, support American jobs, and deliver the kind of quality you can count on.

CONTENT

ROLLERS & ACCESSORIES

PVC ROLLERS	7-9
RUBBER ROLLERS	10-12
ROLLER BRACKETS & ACCESSORIES	
Panel Brackets	12
Roller Brackets	12
Split Panel Brackets	13
Keel Roller Bracket set	13
Roller shafts & Cap Nuts	14
Wobble Roller Conversion Kit.....	15
Wobble Roller Rings	15
Wobble Roller Bunk Bracket Kit.....	15

BUNKS & ACCESSORIES

ROLLER BUNKS	16
WOBBLE PIVOT BARS	16
WOBBLE ROLLER FRONT ASSEMBLY	16
BUNK BOARDS	17
GLIDE ON'S	
Bunk Glide On's.....	17
Modular Glide On's	17
Bunk Slicks	17
BUNK CARPET	18
BRACKETS	
Bunk Brackets	18
Bolster & Swivel Brackets.....	18
PWC Bunk Brackets	19
Vertical Bunk Brackets.....	19
Pontoon Bunk Brackets	19

GUIDE ON'S & ACCESSORIES

BUNK BOARD GUIDE ON'S	
Carpeted Bunk Guide On's.....	20
Bunk Board Hardware Kit	20
Premium Side Guide On's	21
I-BEAM MOUNTING KIT	21
POST GUIDE ON'S	
PVC Heavy Duty Guide On's.....	22
Salt Water Series Guide On's.....	22
Adjustable Guide On's	23
Premium Polymer Adjustable Guide On's....	23
Floating Guide Post	24
ROLLER GUIDE ON'S	
Fixed Angle Roller Guide On's.....	25
Adjustable Roller Guide On's.....	25
PWC Boat Guide On's	25

PONTOON GUIDE ON'S

Pontoon Guide On's	26
Floating Pontoon Guide On's.....	26
High Impact Pontoon Guide On's	27
Pontoon Carpeted Bunk Guide On.....	27
Pontoon Roller Guide On	27

BOW/WINCH MOUNTS

WINCH STAND ASSEMBLIES	28
ADJUSTABLE PWC WINCH STAND	28

FENDERS

METAL FENDERS

Galvanized Metal Fenders.....	29
Aluminum Treadbrite Fenders	29
Adjustable Treabrite Fender	30

PLASTIC FENDERS

8" - 12" Plastic Fender	31
Small/Large Plastic Fenders.....	31
Bracketless Plastic Fender	32
Plastic Fender.....	32
Plastic Fender "SUV" Single.....	33
Plastic Fender "SUV" Tandem	33

FENDER BRACKETS

Flush Mount Brackets	34
Offset Mount Brackets	34
Step Brackets	34

U-BOLTS

U-Bolts	35
---------------	----

SPARE TIRE CARRIERS

Side Mount	36
High Mount	36
Angled/Pivoting.....	36
Heavy Duty Tire Carrier	36
Spare Tire Carrier (for High frames).....	37
Spare Tire Carrier (for aluminum frames)....	37
Spare Hub & Tire Carrier	37
Tire Carriers w/Eliminator Spindle & Hub	37
U-Bolt Spare Tire Carrier	37

TRAILER TONGUES

SwingKing.....	38
----------------	----

TRANSOM STRAPS & CABLES

Boat Transom Strap.....	39
Retractable Boat Transom Strap	39
Hitch Cables	40
Winch Straps	40
Winch Cables	40

ACCESSORIES

Quick Links	41
Hooks	41
“S” Hook Chain Keepers.....	41
Safety Chains	41-42
Tie Down Frame Bracket.....	42
Fluted Shackle Bolts.....	42
Spring Hangers.....	43
Hex Head Bolts.....	43
Universal Tail Light Bracket	43
License Plate Mounting Bracket.....	44
Tail Light Protector.....	44
Trailer Boarding Step.....	44

MARINE ANCHORS

DANFORTH® ANCHORS

Danforth® Standard®	46
Danforth® Hi-Tensile®	46

HOOKER® ANCHORS

Hooker® Quik-Set.....	47
Super Hooker®	47

ANCHOR KITS

Danforth® S600 Anchor Kit.....	48
Super Hooker® Anchor Kits.....	48
Hooker Quik-Set® 10HQ Anchor Kit.....	48
Tie Down Mate.....	48
Tie Down Mate Kit	48

ANCHOR ACCESSORIES

Danforth® Anchor Rope.....	49
Chains & Shackles	49
Anchor Display Stand	49

DOCK LADDERS

Nautisteps Lite	50-51
Dock Ladder	52
Aluminum Ladders.....	52
Speed Release Mounting Brackets	52

DOCK HARDWARE

Lag Bolt Sets	53
Carriage Bolt Sets	53
Hex Head Bolt Sets	53
Connector Pin Sets.....	54
Outside Corner Female	54
Outside Corner Male	54
Outside Corner End.....	55
Inside Corner	55
Inside Rolling Ramp Bracket	55
Male T Connector	56
Female T Connector	56
Washer Plate	57
Backing Plate.....	57
Angle Brackets & Clips	58
Inside Corner Pipe Holder	58
Outside Pipe Holder	59
Chain Retainer.....	59
14” Internal Pile Holder.....	59
Backing Plate/Hurricane Strap	60
14” Roller Pile Holder	60
Chain Pile Holder.....	60
Piling Hoop	60
Deck Plate	61
Heavy Duty Piling Hoop.....	61
Dock Roller Assembly.....	61
Piling Hoop Assembly	61
Piling Rod/Ring.....	62
Piling Hoop	62
Universal Deck Plate	62



TIE DOWN
MANUFACTURING INGENUITY

MARINE DIVISION
TRAILER PARTS &
ACCESSORIES

PVC ROLLERS

Backed by a lifetime guarantee and proudly made in the U.S.A., Tie Down's exclusive Hull Sav'r PVC rollers, bow, and keel accessories are crafted from high-quality, UV-resistant polyvinyl material. Designed to protect your boat from marks and impact, these products perform reliably in saltwater and freshwater conditions.

BOW ROLLER ASSEMBLY WITH END BELLS, 1/2 IN. SHAFT



All-in-one replacement that protects the bow from contact with brackets and bolt heads. Helps center the boat on the trailer, cushions impact with the bow stand, and absorbs road shock during transit.

- | | |
|-------------|-----------------------|
| Amber 3 in. | Part ID: 86143 |
| Amber 4 in. | Part ID: 86142 |
| Black 3 in. | Part ID: 86405 |
| Black 4 in. | Part ID: 86404 |

BOW ROLLER, 1/2 IN. SHAFT



Centers the boat during loading and cushions bow contact with the trailer's bow stand. Helps prevent damage from bolts or brackets and reduces impact during transport.

- | | |
|-------------|-----------------------|
| Amber 3 in. | Part ID: 86289 |
| Amber 4 in. | Part ID: 86287 |
| Black 3 in. | Part ID: 86402 |
| Black 4 in. | Part ID: 86400 |

END BELL, 1/2 IN. SHAFT



Designed to pair with a bow roller, End Bells extend the slope and improve alignment at the bow stand. Helps guide and protect the boat during loading.

- | | |
|-------------|-----------------------|
| Amber 3 in. | Part ID: 86290 |
| Amber 4 in. | Part ID: 86288 |
| Black 3 in. | Part ID: 86403 |
| Black 4 in. | Part ID: 86401 |

ROLLERS



KEEL ROLLER, 5/8 IN. SHAFT

Replaces worn or warped rollers to help center and guide the keel during launch and retrieval. Available in spool and center-guided styles to reduce side movement and protect the hull across trailer cross members.

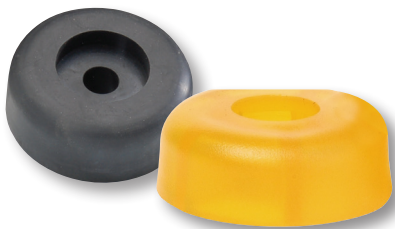
Amber: 4 in. Spool	Part ID: 86284
5 in. Spool	Part ID: 86283
5 in. Center Guided	Part ID: 86158
Black: 4 in. Spool	Part ID: 86406
5 in. Spool	Part ID: 86408
5 in. Center Guided	Part ID: 86407



KEEL ROLLER, 5/8 IN. SHAFT

Keeps the boat centered while loading and trailering. Helps prevent side-to-side shifting and protects the hull across trailer cross members. Ideal for replacing worn or damaged rollers.

Amber: 8 in.	Part ID: 86159
10 in.	Part ID: 86169
12 in.	Part ID: 86199
Black: 8 in.	Part ID: 86409
10 in.	Part ID: 86410
12 in.	Part ID: 86411



KEEL END CAP, 5/8 IN. SHAFT

Guides and stabilizes the boat during loading while preventing the hull from slipping off the keel roller. Helps maintain proper alignment along the trailer.

Amber 3.5 in.	Part ID: 86198
Black 3.5 in.	Part ID: 86412



KEEL PAD 3.5 IN. X 15 IN.

Protects the hull from direct metal contact at the trailer's center. Provides a cushioned barrier to reduce scrapes and impact during loading and transport. Made from durable polyvinyl.

Amber	Part ID: 86291
Black	Part ID: 86418



V-BOW STOP

Stops and holds the boat's bow in place during loading. Unlike a roller, the V-shape provides a firm catch without rotation, guiding the bow into position. Available for ½ in. and ¾ in. shafts.

Amber: ½ in. Shaft, 3 in.	Part ID: 86285
Black: ½ in. Shaft, 3 in.	Part ID: 86413
½ in. Shaft, 4 in.	Part ID: 86421
¾ in. Shaft, 2 in.	Part ID: 86420



WOBBLE ROLLER - SMOOTH, ¾ IN. SHAFT

Smooth-surface roller helps guide larger boats onto the trailer's bow stop during launch and retrieval. Designed to resist saltwater and abrasion.

Black 4 in. Part ID: **86428**



WOBBLE ROLLER - RIBBED, 7/8 IN. SHAFT

Ribbed design offers added grip for slick hulls and helps prevent scratches during loading. Replaces worn rollers and guides the boat smoothly onto the trailer.

Amber: 4 in.	Part ID: 86277
Black: 4 in.	Part ID: 86427
5 in.	Part ID: 86429



WOBBLE ROLLER KIT, 7/8 AND 1-1/8 IN. SHAFT

Complete ribbed roller kit provides extra grip and protects the hull during loading. Includes two rollers, bushings, washers, and hog rings for quick replacement. Fits 7/8 in. and 1-1/8 in. shafts.

Amber 5 in.	Part ID: 86144
Black 5 in.	Part ID: 86419

ROLLERS

RUBBER ROLLERS



BOW ROLLER, 1/2 IN. SHAFT

Centers the boat on the trailer while protecting the bow from contact with bolts or brackets. Cushioned surface helps absorb impact and reduce wear during transport.

3 in. Part ID: **86487**

4 in. Part ID: **86488**

KEEL ROLLER



Centers and guides the boat during loading to reduce shifting and protect the hull. Available in spool and center-guided styles for smooth alignment across trailer cross members.

Spool:

1/2 in. Shaft: 4 in. Part ID: **86479**

5 in. Part ID: **86481**

3/8 in. Shaft: 4 in. Part ID: **86480**

5 in. Part ID: **86482**

Center Guided:

3/8 in. Shaft: 5 in. Part ID: **86483**

8 in. Part ID: **86484**

10 in. Part ID: **86485**

12 in. Part ID: **86486**



WOBBLE ROLLER - SMOOTH

Smooth surface guides the boat onto the trailer's bow stop during launch and retrieval. Built with salt and abrasion-resistant rubber for long-lasting performance.

4 in. Part ID: **86492**



WOBBLE ROLLER - RIBBED

Ribbed design offers added grip for slick hulls and helps prevent scratches during loading. Replaces worn rollers and fits most standard bunk setups.

$\frac{3}{4}$ in. Shaft, 4 in. Part ID: **86427**

$\frac{7}{8}$ in. Shaft, 5 in. Part ID: **86429**



END CAP

Prevents the boat from slipping off the rollers during loading and unloading. Designed to guide and stabilize the boat in combination with the bow roller.

$\frac{1}{2}$ in. Shaft, 2 in. x 2 in.

Part ID: **86476**

$\frac{5}{8}$ in. Shaft, 2.5 in. x 1.5 in.

Part ID: **86478**

$\frac{1}{2}$ in. Shaft, 3 in.

Part ID: **86495**

$\frac{5}{8}$ in. Shaft, 3.5 in.

Part ID: **86496**



SIDE GUIDE ROLLER

High-quality rubber roller for fixed or adjustable trailer side guide arms. Helps keep the boat aligned and centered during loading and unloading.

$\frac{1}{2}$ in. Shaft, 9 in. x 2 in.

Part ID: **86475**

$\frac{5}{8}$ in. Shaft, 12 in. x 2.5 in.

Part ID: **86477**



V-BOW STOP

Secures the bow and brings the boat to a stop during loading. Holds the boat in place without rolling, acting as a stationary catch for proper alignment.

$\frac{3}{8}$ in. Shaft, 2 in. Part ID: **86489**

$\frac{1}{2}$ in. Shaft, 3 in. Part ID: **86490**

$\frac{1}{2}$ in. Shaft, 4 in. Part ID: **86491**

ROLLERS

PANEL BRACKET ASSEMBLIES

Pre-assembled kits with keel roller, shaft, and cap nuts. Each bracket is made from 11-gauge hot-dip galvanized steel. Available with amber or black rollers in polyvinyl or rubber.

Part ID:	Description	Roller Size	Width Between Slots	Bracket Width
86279	Amber - Poly	5 in.	3 in.	5-3/8 in.
86414	Black - Poly	5 in.	3 in.	5-3/8 in.
86430	Black - Rubber	5 in.	3 in.	5-3/8 in.
86280	Amber - Poly	8 in.	6 in.	8-3/8 in.
86415	Black - Poly	8 in.	6 in.	8-3/8 in.
86431	Black - Rubber	8 in.	6 in.	8-3/8 in.
86281	Amber - Poly	10 in.	8 in.	10-3/8 in.
86416	Black - Poly	10 in.	8 in.	10-3/8 in.
86432	Black - Rubber	10 in.	8 in.	10-3/8 in.
86282	Amber - Poly	12 in.	10 in.	12-3/8 in.
86417	Black - Poly	12 in.	10 in.	12-3/8 in.
86433	Black - Rubber	12 in.	10 in.	12-3/8 in.



PANEL BRACKETS

Hot-dip galvanized 11-gauge steel brackets designed for use with keel rollers. Each bracket accepts 7/16 in. or 1/2 in. bolts and fits 1/2 in. or 5/8 in. shafts.

Part ID:	Roller Size	Width Between Slots	Bracket Width
86150	4 in.	2 in.	4-3/8 in.
86151	5 in.	3 in.	5-3/8 in.
86152	8 in.	6 in.	8-3/8 in.
86155	10 in.	8 in.	10-3/8 in.
86153	12 in.	10 in.	12-3/8 in.



ROLLER ACCESSORIES



SPLIT PANEL BRACKETS

Fits any size keel roller with 1/2 in. or 5/8 in. shaft. Slots accept 7/16 in. or 1/2 in. bolts for flexible height adjustment and added support. Sold as left and right side brackets.

Packaged (Skin Pack) Part ID: **81235**
Bulk (Label Only) Part ID: **86140**



KEEL ROLLER BRACKET SET

Mounts directly to trailer tongue to support the keel during transport and loading. Set includes a 4 in. rubber keel roller, mounting brackets, shaft, cap nuts, and hardware.

Keel Roller Assembly Kit (w/ roller)	Part ID: 86121
Keel Roller Assembly Kit 5" Black	Part ID: 86473
Keel Roller Brackets Packaged (2 per pack)	Part ID: 86122
Keel Roller Brackets Bulk (2 per pack)	Part ID: 86120

* Packaged kit includes roller shaft and 2 cap nuts. Bulk includes roller shaft only.

ROLLER ACCESSORIES

ROLLER SHAFTS

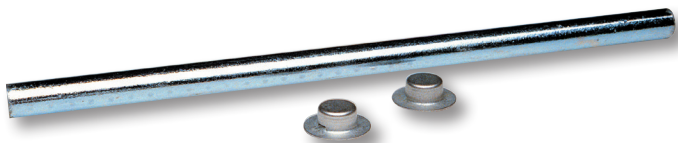
Made from high-quality galvanized or zinc-plated steel for long-term durability and corrosion resistance. Packaged kits include shaft and cap nuts; bulk options include shaft only.

ROLLER SHAFTS Galvanized

Diameter	Length	Packaged* Part ID:	Bulk Part ID:
1/2 in.	5-1/4 in.	86183	---
1/2 in.	6-1/4 in.	86184	---
5/8 in.	5-1/4 in.	86185	86178
5/8 in.	6-1/4 in.	86186	86179
5/8 in.	9-1/4 in.	86187	86180
5/8 in.	11-1/4 in.	86188	86181
5/8 in.	13-1/4 in.	86189	86182

ROLLER SHAFTS Zinc Plated

Diameter	Length	Packaged* Part ID:	Bulk Part ID:
1/2 in.	4-1/4 in.	86024	---
1/2 in.	5-1/4 in.	86025	86035
1/2 in.	6-1/4 in.	86026	86036
5/8 in.	5-1/4 in.	86027	86037
5/8 in.	6-1/4 in.	86028	86038
5/8 in.	9-1/4 in.	86029	86039
5/8 in.	11-1/4 in.	86030	86040
5/8 in.	13-1/4 in.	86031	86041
5/8 in.	15-1/4 in.	86032	---
5/8 in.	19-1/4 in.	86033	---



* Packaged kit includes roller shaft and 2 cap nuts. Bulk includes roller shaft only.

CAP NUTS

Secures the end of any round shaft. Made from durable materials for lasting performance and safe operation.

1/2 inch: 4-pack	Part ID: 86305
50-pack	Part ID: 86300
5/8 inch: 4-pack	Part ID: 86310
50-pack	Part ID: 86301



ROLLER ACCESSORIES



WOBBLE ROLLER BUSHING CONVERSION KIT

Converts select roller assemblies for use with bushings. Includes bushings and washers for proper alignment and fit.

Part ID: **86446**

WASHER AND HOG RINGS FOR WOBBLE ROLLERS

Replacement hardware for worn or rusted assemblies. Made with marine-grade materials for long-lasting hold and performance.

Washer and Hog Rings (2-pack)
Hog Rings (only), Bulk 100 per box

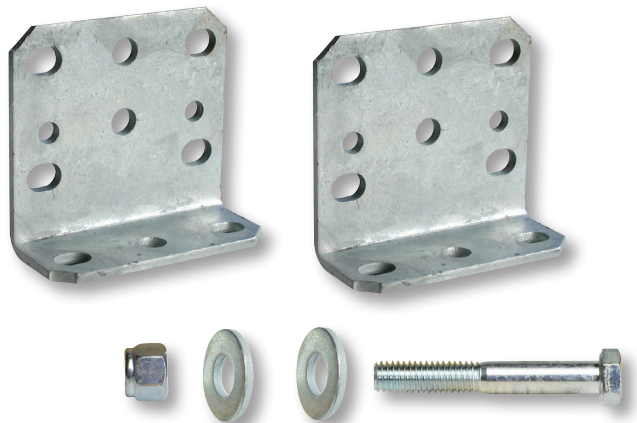
Part ID: **86252**
Part ID: **86258**



WOBBLE ROLLER BUNK BRACKET

Mounts replacement Wobble Roller Bunks to the trailer. Kit includes two galvanized mounting brackets, a bolt, a nut, and two washers.

Part ID: **86552**



BUNK BOARDS

ROLLER BUNKS

Heavy-duty galvanized steel roller bunks support and align the boat during transport and storage. Each bunk includes rollers and pre-drilled steel frames (mounting hardware sold separately). Swivel brackets available for added adjustability.

4 ft. Black Rubber Rollers
4 ft. Amber Poly Rollers
5 ft. Black Rubber Rollers
5 ft. Amber Poly Rollers
Bolster Support Swivel Bracket

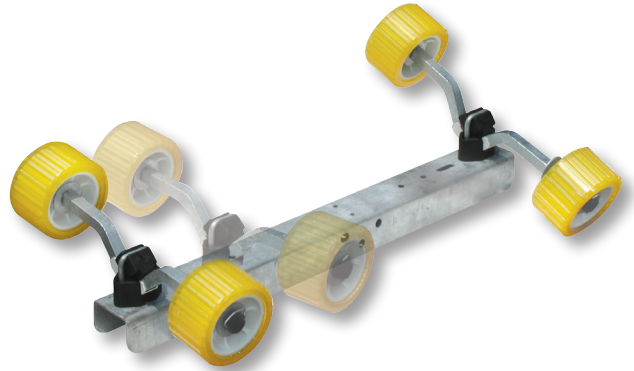
Part ID: **86117**
Part ID: **86157**
Part ID: **86118**
Part ID: **86145**
Part ID: **81210**



WOBBLE ROLLER BUNK ASSEMBLY

Full pivoting assembly supports a range of hull shapes and sizes. Includes a 36 in. galvanized steel cross bar with 2 wobble roller arms (expandable to 4 arms), 4 rollers, and all mounting hardware.

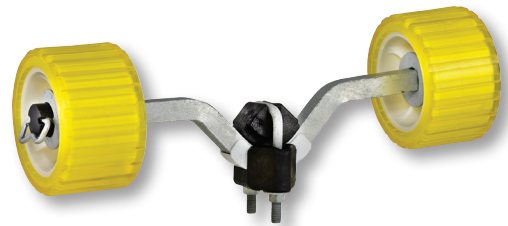
Part ID: **86550**



WOBBLE ROLLER ASSEMBLY Add on

Compatible with Tie Down's Wobble Roller Bunk Assembly, this add-on includes 2 wobble rollers and a pivoting roller arm. Mounting hardware not included.

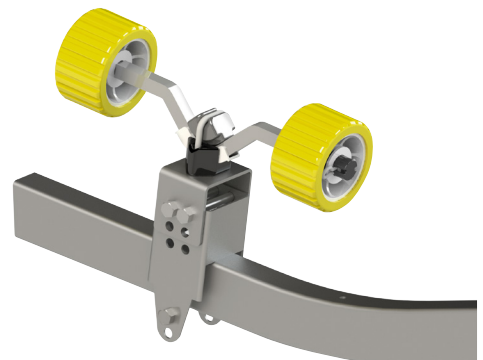
Part ID: **86551**



WOBBLE ROLLER FRONT ASSEMBLY

Adds roller support to the trailer's front cross member. Fits 3x3 or 3x4 frames and includes a heavy-duty galvanized bracket, 2 wobble roller assemblies, and mounting hardware.

Part ID: **86574**



BUNK BOARDS

CARPETED BUNK BOARDS

Sold in pairs, each board is wrapped in marine-grade black carpet for long-term durability. Available in multiple lengths to fit standard trailer setups.

- 3 ft. Part ID: **86127**
- 4 ft. Part ID: **86128**
- 5 ft. Part ID: **86129**
- 6 ft. Part ID: **86472**



BUNK SLICKS

Bolt-on molded PVC guides for carpeted bunk boards. Smooth surface helps reduce friction when loading. Each pack includes 10 slicks.

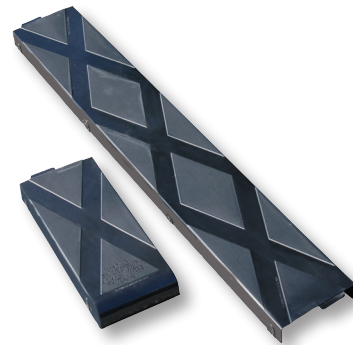
- 1-3/4 in. x 17 in. (a) Part ID: **86170**
- 3 in. x 16in. (b) Part ID: **86164**



MODULAR GLIDE ON'S

Interlocking modular glide-on sections for 2x6 bunk boards. Each kit includes 3 four-foot sections, 4 one-foot sections, and all mounting hardware. Supports up to 8 ft. bunks.

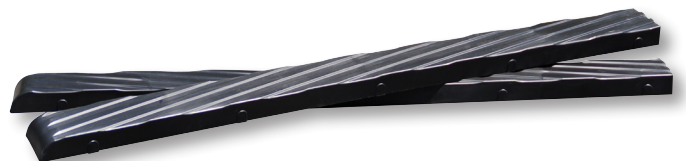
- Black Part ID: **86295**
- White Part ID: **86296**



BUNK GLIDE ON'S

Enhanced polyvinyl glide-ons for 2x4 bunk boards. Each 4 ft. section provides smooth guidance and reduced friction. Sold in 4-piece packs.

- Black Part ID: **86173**
- White Part ID: **86162**



BUNK BOARDS

BUNK CARPET

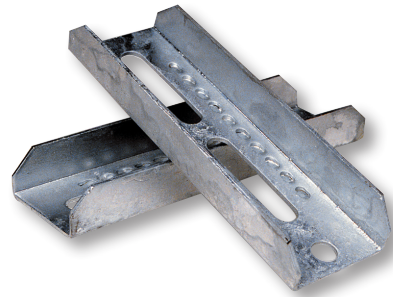
Durable, marine-grade replacement carpet for boat trailer bunks. Available in multiple sizes and colors to fit everything from 2x4 setups to extra-wide bunks. Mildew-resistant and easy to install.

11 in. x 12 ft., Black	Part ID: 86137
11 in. x 12 ft., Gray	Part ID: 86138
18 in. x 18 ft., Black	Part ID: 86463
18 in. x 18 ft., Gray	Part ID: 86464
11 in. x 150 ft., Black	Part ID: 86306
11 in. x 150 ft., Gray	Part ID: 86307



BOLSTER BRACKETS

Slotted design allows for vertical adjustment. Hot-dip galvanized with non-slip dimples for added grip and support. Sold in 2-pack or bulk, with or without swivel brackets, bolts, and nylon nuts.



Size	Slot Length	2-Pack Part ID:	Bulk Part ID:
8 in.	2-3/4 in.	81195	86130
10 in.	2-3/4 in.	81200	86131
12 in.	2-3/4 in.	81250	86132

BOLSTER SWIVEL BRACKETS

Swivel brackets mount to your bolster bracket for angle adjustment. Available in 2-pack or bulk sets. Includes swivel brackets and all required hardware.

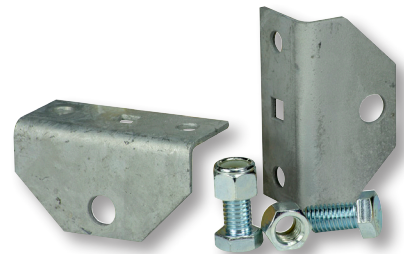


Size	Slot Length	2-Pack Part ID:	Bulk Part ID:
8 in.	2-3/4 in.	81210	81211
10 in.	2-3/4 in.	81215	81216
12 in.	2-3/4 in.	81220	81221

SWIVEL BRACKETS

Designed for tilting and shifting, these hot-dip galvanized brackets work with most bolster setups. 2-pack includes two brackets and mounting hardware.

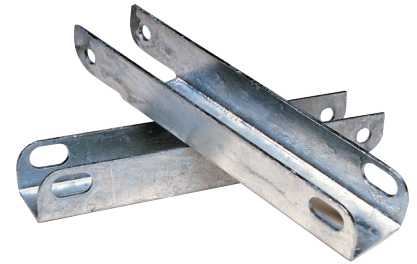
2 - Pack includes 1/2 in. x 1 in. bolt and two nylon nuts. Part ID: **86160**
Bulk (one bracket only) Part ID: **86115**



BUNK BOARDS

BUNK BRACKETS

Mounts 2 in. bunk boards with vertical adjustability. Made from 11-gauge galvanized steel with slotted sides for bolt fit and angle adjustment. Sold in 2-pack or bulk.



Size	Slot Length	2-Pack Part ID:	Bulk Part ID:
8 in.	4-1/2 in.	NA	86149
9-1/2 in.	6 in.	81225	86125
12-5/8 in.	9-1/8 in.	81230	86126

PWC BUNK BRACKETS

Designed for personal watercraft and skiff trailers. Fixed angle simplifies bunk placement and eliminates the need for swivels. Includes one left and one right bracket per pack.

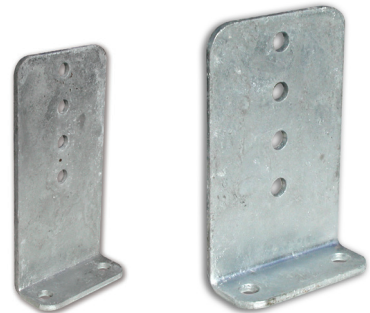
Part ID: **86564**



VERTICAL BUNK BRACKETS

For use with vertical bunk boards on aluminum trailers. Made from 1/4 in. hot-dip galvanized steel.

5 in. wide x 8 in. tall Part ID: **86562**
5 in. wide x 10 in. tall Part ID: **86563**



PONTOON BUNK BRACKETS

Heavy-duty bracket designs allow for easy installation on pontoon trailers. Slotted holes accept 2x4 or 2x6 bunk boards.

8.38 in. wide bottom x 15.68 in. wide top x 4.70 in. tall (shown)
Part ID: **86559**

8.38 in. wide bottom x 15.68 in. wide top x 6.19 in. tall
Part ID: **86560**

13.13 in. wide bottom x 15.4 in. wide top x 6.07 in. tall
Part ID: **86561**



BUNK BOARD GUIDE ON'S

Black carpeted 2x4 boards with adjustable mounting posts. Installs on the side of the trailer frame or above it (up to 19 in. high). Fits 2–3 in. wide frames up to 4 in. tall. Includes U-bolts, nuts, and mounting hardware.

24 in. Bunk Board Guide On Kit
60 in. Bunk Board Guide On Kit

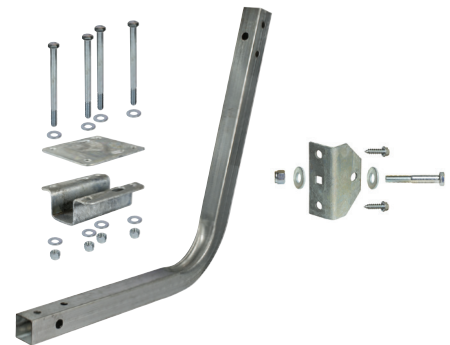
Part ID: **86123**
Part ID: **86124**



BUNK BOARD GUIDE ON POST HARDWARE KIT

Hardware-only version of the Bunk Board Guide Ons. Includes galvanized brackets, U-bolts, and zinc-plated nuts for use with existing carpeted bunks. Fits 2–3 in. wide trailer frames up to 4 in. tall.

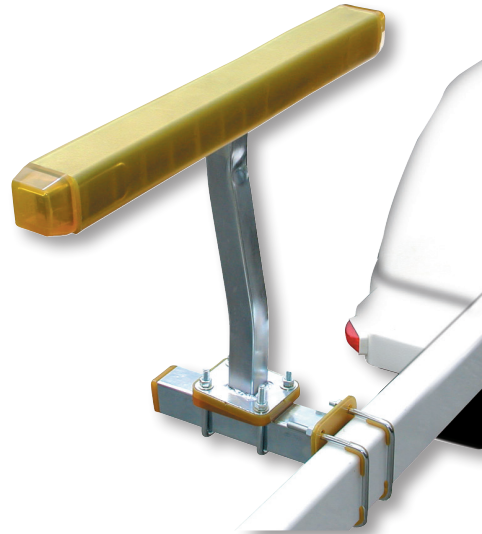
Part ID: **86340**



PREMIUM SIDE GUIDE ON'S

24 in. polyvinyl-covered side guides protect your boat and trailer from scratches and dings. Sold in pairs with all mounting hardware. Compatible with 3 in. and 4 in. trailer frame sizes.

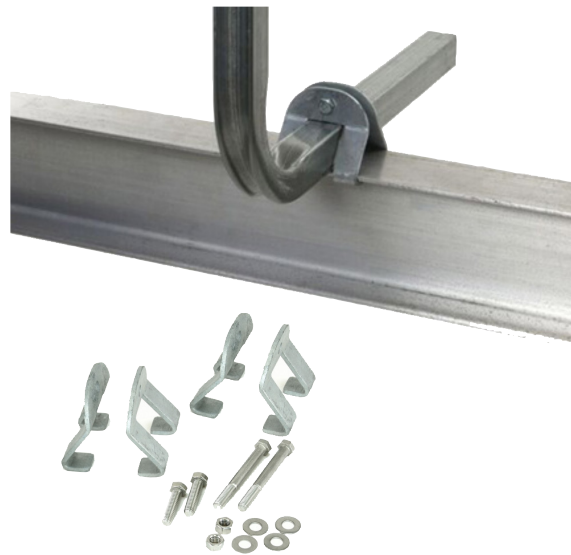
Part ID: **86148**



I-BEAM MOUNTING KIT - GUIDE POSTS

Mounts a 1-1/2 in. square guide post onto aluminum I-beam trailer frames. Kit includes four galvanized brackets, two small and two large 3/8 in. bolts, and zinc-plated mounting hardware.

Part ID: **86569**



GUIDE ONS

PVC POST GUIDE ON Heavy Duty

Designed to fit most trailers, these guide-ons feature reinforced PVC posts with bright orange caps and optional LED lights. Includes zinc-plated mounting hardware and galvanized brackets for durability. Available in 90° and 13° slant styles.

90° Angle Post		
Color	Length	Part ID
White	40 in.	86447
	48 in.	86342
	60 in.	86344
Black	40 in.	86448
	48 in.	86449
	60 in.	86450
w/LED Light	48 in.	86346
	60 in.	86348

13° Slant Post		
Color	Length	Part ID
White	40 in.	86458
	48 in.	86103
	60 in.	86119
w/LED Light	48 in.	86441
	60 in.	86440



SALTWATER SERIES GUIDES POSTS

ABuilt for corrosion resistance in marine environments. Available in aluminum or hot-dip galvanized steel, each kit includes reinforced PVC posts with orange caps. Fits trailer frames 2–3 in. wide.

Color	Length	Part ID
Aluminum	48 in.	86447
	60 in.	86342
Galvanized	48 in.	86344
	60 in.	86448



ADJUSTABLE PVC GUIDE ON

Fits most trailer types and frame sizes. Adjustable side-mount design offers maximum positioning flexibility. Includes PVC upright with cap, zinc-plated hardware, and galvanized brackets.

Part ID: **86105**

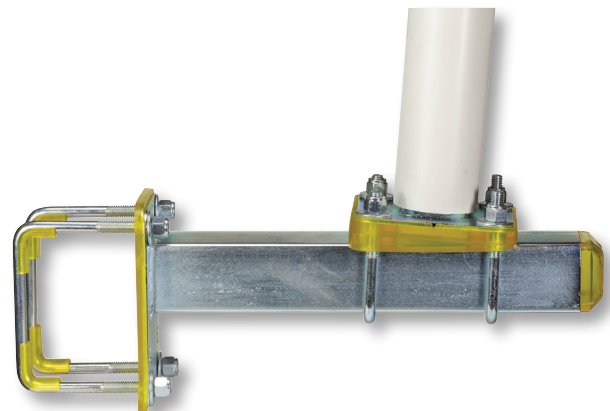
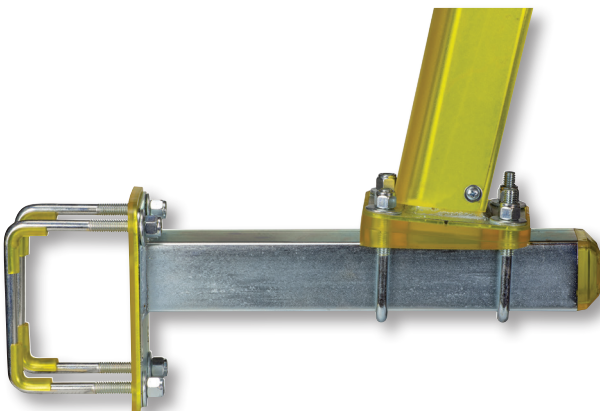


PREMIUM POLYMER GUIDE ON'S

Engineered to protect the boat and trailer finish with a non-marking polymer sleeve. Zinc-plated hardware fits 3 in. and 4 in. frames. Sold in pairs.

22 in. Soft Poly Vinyl Part ID: **86104**
48 in. PVC Post Part ID: **86200**
60 in. PVC Post Part ID: **86201**

22 in. Soft Poly-vinyl
(Shown left)
Part ID: **86104**



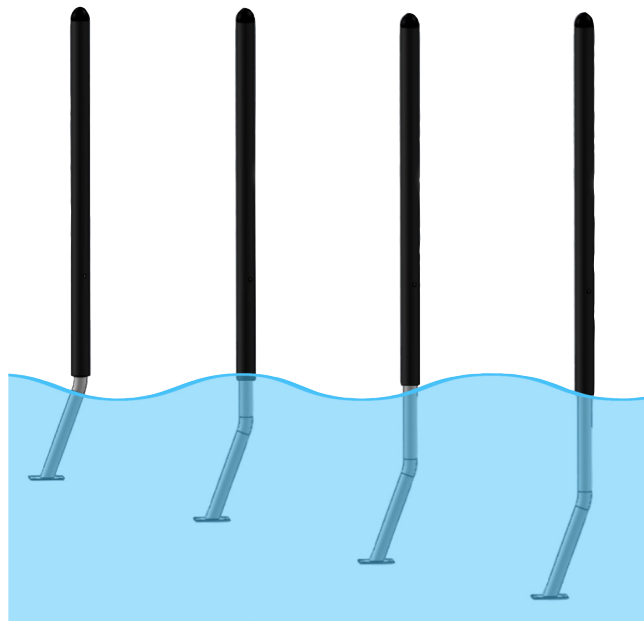
GUIDE ONS

FLOATING GUIDE POST, 48-60 IN.

Self-adjusting guide post stays at water level regardless of ramp angle or trailer depth. Constructed from powder-coated 14-gauge steel with a black or white PVC sleeve that protects the boat hull. Mounting bracket fits 3 in. and 4 in. tall trailer frames and allows 8 in. of width adjustment.

Black Part ID: **86568**

White Part ID: **86576**



Width can adjust 8 in.

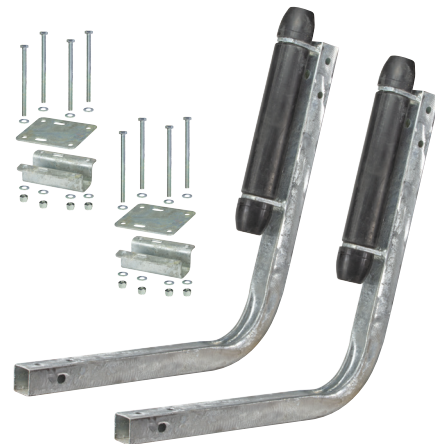
Mounting bracket fits 3 & 4 in.
tall frame rails



FIXED ANGLE ROLLER GUIDE ON'S

Fits trailer frames 2–4 in. tall and up to 13 in. wide. Pre-set 13 in. rubber rollers mount to the top or side of the frame or bunk. Includes mounting hardware.

Part ID: **86102**



ADJUSTABLE ROLLER SIDE GUIDE ON'S

Offers up to 16 in. of side-to-side adjustment (8 in. per side). Heavy-duty galvanized steel components and adjustable frame mount fit 1½ in. channel or tube frames up to 5 in. tall. Sold with mounting hardware.

Part ID: **86106**



LOW RIDER GUIDE ON'S

Ideal for jon boats, bass boats, and PWC. Made from non-marking molded PVC with 1½ in. square 16-gauge galvanized tubing. Fits trailer frames 2 in. wide and 2–4 in. high. Mounting hardware included.

Part ID: **86466**



GUIDE ON'S

PONTOON GUIDE ON'S

Mounts between pontoons to help guide the boat during loading. Made from 1½ in. square, 16-gauge galvanized steel and sleeved in non-marking PVC with bright orange end caps for visibility. Fits trailer cross members 2 in. by 2 in. or 2 in. by 4 in. Includes mounting hardware.

Part ID: **86465**



FLOATING PONTOON GUIDE ON'S

Self-leveling design adjusts height from 24 to 36 in. to match ramp angle. Each post is sleeved in 2 in. × 20 in. PVC and capped with orange ends for clear targeting. Fits trailer frames 2 in. by 2 in., 3 in., or 4 in. All hardware included.

Part ID: **86468**



HIGH IMPACT PONTOON GUIDE ON'S

Built for maximum strength and support. Each 2-1/2 in. square-tube post is galvanized and sleeved in non-marking molded PVC. Mounts between pontoons and fits 2 in. by 2-3 in. trailer cross members. Hardware included.

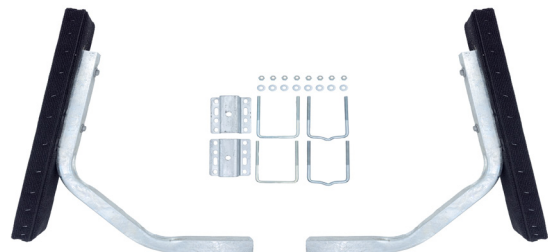
Part ID: **86467**



PONTOON CARPETED BUNK GUIDE ON

Guides pontoon boats smoothly during loading. Designed to mount between pontoons, each guide is topped with marine-grade black carpet to protect the hull. Sold in pairs with mounting hardware.

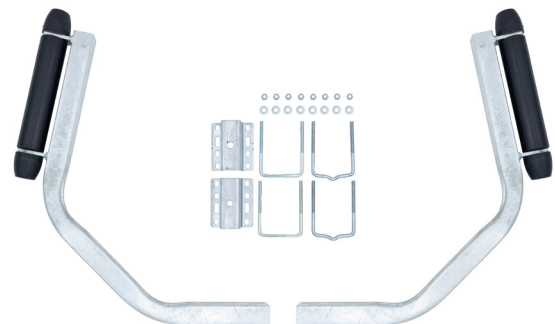
Part ID: **86459**



PONTOON ROLLER GUIDE ON

Features rotating rollers to center and support pontoons during trailer loading. Fits cross members mounted between pontoons. Includes mounting hardware.

Part ID: **86461**

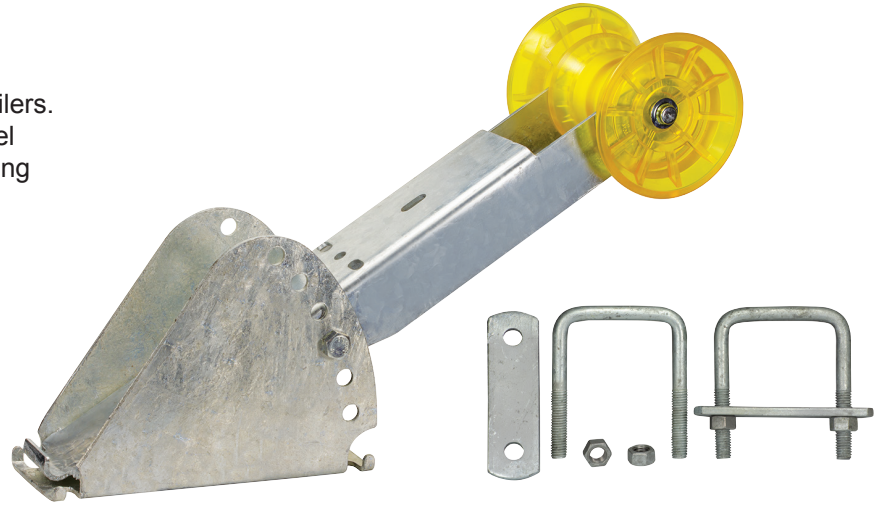


WINCH STANDS

ADJUSTABLE PWC WINCH STAND

Designed for personal watercraft and jon boat trailers. Fits 2×3 in. wide tongues. Hot-dip galvanized steel construction with an amber bow roller and mounting hardware included.

Part ID: **86557**



ADJUSTABLE BOW STAND/WINCH STAND

Fits 3 in. wide trailer tongues. Built from 11-gauge galvanized steel and extends up to 30 in. tall. Includes mounting hardware, 4 in. amber bow roller, and black end caps for added protection.

Part ID: **86558**



GALVANIZED METAL FENDERS

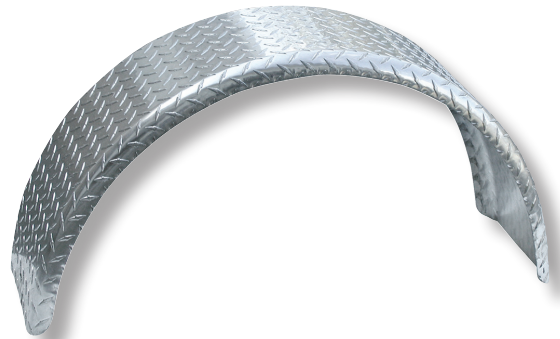
Made from 16-gauge galvanized steel. Pre-drilled for versatile mounting. Sold without mounting brackets.



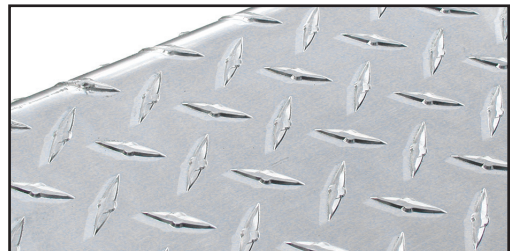
Wheel Size	Dimensions (W x L x H)	Part ID:
8 in.	7 in. x 20 in. x 6 in.	86264
12 in.	7 in. x 23.5 in. x 6.5 in.	86265
13 in.	8 in. x 27.5 in. x 11 in.	86266
14-15 in.	9 in. x 31.5 in. x 13 in.	86267

TREAD ALUMINUM FENDERS

Built from 12-gauge (.08 in.) tread aluminum. Durable, drillable design allows for custom mounting. Sold without brackets.



Wheel Size	Dimensions (W x L x H)	Part ID:
13 in.-15 in.	8 in. x 31.5 in. x 13.125 in.	44837
13 in.-15 in.	9 in. x 33.75 in. x 14.875 in.	44836



FENDERS

ADJUSTABLE FENDER - TANDEM REGULAR

Crafted with .080 Aluminum Tread Brite, this adjustable fender protects your trailer from road debris and accommodates almost all dual-axle trailer sizes. It adjusts between 60 in. to 72 in. and measures 9 in. × 16 in. high.

Part ID: **86268**



ADJUSTABLE FENDER - TANDEM TEARDROP

Made from .080 Aluminum Tread Brite, the teardrop-style adjustable fender safeguards dual-axle trailers from debris. Measuring 9 in. × 16 in., it adjusts from 60 in. to 72 in. to fit most tandem setups.

Part ID: **86269**



8-12" PLASTIC FENDER

These lightweight trailer fenders are molded from high-density polyethylene (HDPE) for long-lasting durability and impact resistance. Designed to fit 8 in. to 12 in. wheels. Available in silver or black.

Silver Part ID: **49378S**

Black Part ID: **49378**



PLASTIC FENDERS - SMALL AND LARGE

Constructed from UV-protected high-density polyethylene, these fenders resist fading, cracking, and damage.

- Small fenders (7¼ in. × 21 in. × 5 in.) fit 8–12 in. wheels.
- Large fenders (11¼ in. × 46 in. × 11 in.) fit 13–15 in. wheels.
- Each fender supports up to 200 lbs.

Small Fenders White

Part ID: **17026**

Small Fenders Black

Part ID: **17033**

Large Fenders White

Part ID: **44332**

Large Fenders Black

Part ID: **44331**



FENDERS

BRACKET-LESS PLASTIC FENDER

Designed for wheels up to 12 in., this high-impact plastic fender mounts directly to your trailer frame without brackets. Durable and easy to install, it's ideal for light-duty trailer protection.

Silver Part ID: **86556**
Black Part ID: **86555**



PLASTIC FENDERS

This single-piece SUV fender is molded from high-strength plastic for consistent shape, finish, and performance. Designed for 14–15 in. wheels, it resists corrosion and impact damage. Includes mounting hardware.

Description	Dimensions (W x L x H)	Part ID:
Large White Fender	11-3/8 in. x 45 in. x 11 in.	44332
Large Black Fender	11-3/8 in. x 45 in. x 11 in.	44331



PLASTIC FENDERS - “SUV” SINGLE

These two-piece tandem fenders are built from durable plastic and bolt together easily without modification. Designed for 14–15 in. wheels and tires, they offer corrosion and impact resistance. Kit includes mounting hardware.

Part ID: **86553**



PLASTIC FENDERS - “SUV” TANDEM

UV-resistant plastic fenders help reduce fading and preserve appearance over time. Designed for 13 in., 14 in., and 15 in. wheels and rated to hold up to 200 lbs. Compatible with single- or multi-axle trailers.

Part ID: **86554**



FENDER BRACKETS

Designed to provide a sturdy and reliable attachment, Tie Down's Fender Brackets are the perfect solution for securely mounting fenders to the side of your trailer frame. With easy installation and durable construction, these brackets ensure your fenders stay in place, protecting your trailer and cargo during transport.

OFFSET BRACKETS

Designed for 8 in. and 12 in. metal fenders, these galvanized brackets mount to the trailer side frame in an offset configuration. Sold in pairs.

Part ID: **86260**



FLUSH BRACKETS

These heavy-duty flush brackets fit 8 in. and 12 in. fenders. Sold in pairs and install easily on both sides of the trailer.

Part ID: **86262**



FLUSH BRACKETS

Designed for plastic fenders (Part IDs 17028 and 17033), these galvanized brackets provide a secure flush mount to the trailer frame.

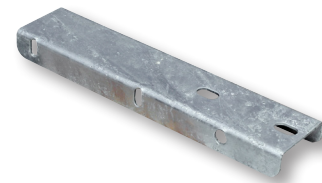
Part ID: **81231**



STEP BRACKETS

Built for larger plastic fenders, these brackets feature a single galvanized metal step plate. Secure your fenders with added strength and convenience.

Part ID: **44141**



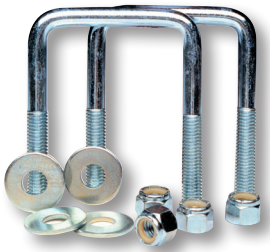
STEP BRACKETS

For 14 in. and 15 in. steel fenders, these galvanized step brackets are designed to hold up in harsh conditions. Sold in pairs.

Part ID: **44165**



U-BOLTS



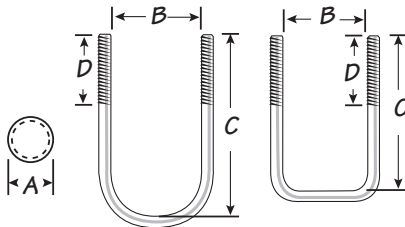
U-BOLT KITS

Tie Down U-Bolt Kits are available in zinc-plated or galvanized finishes, in square or round shapes. Each kit includes flat washers and nuts, with some models including lock washers and nyloc nuts.

- Zinc-Plated U-bolts are corrosion-resistant and include flat washers and nyloc nuts.
- Galvanized U-bolts offer added protection against rust and include flat washers, lock washers, and nuts.



MADE IN THE USA



How to measure for U-Bolts:

- A** = Rod Width - Threads Per Inch
- B** = Between Leg Length (inside thread)
- C** = Leg Length
- D** = Thread Length

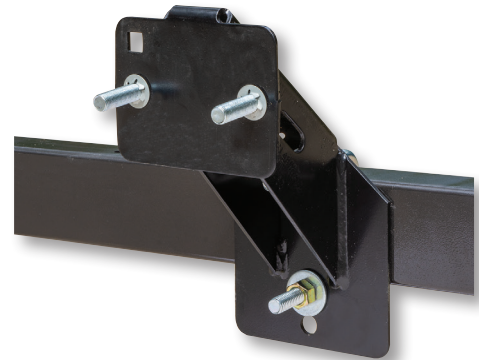
A	B	C	D	Shape	Zinc Part ID:	Galvanized Part ID:
7/16 in.-14	1-9/16 in.	3-9/16 in.	2 in.	Square	86212 (Each)	86220 (Each)
7/16 in.-14	2-1/16 in.	2-5/16 in.	1 in.	Square	86228 (Each)	---
7/16 in.-14	2-1/16 in.	4-5/16 in.	2 in.	Square	86229 (Each)	---
7/16 in.-14	3-1/16 in.	3-5/16 in.	1-3/4 in.	Square	86230 (Each)	---
7/16 in.-14	3-1/16 in.	4-5/16 in.	2 in.	Square	86231 (Each)	---
7/16 in.-14	4-1/16 in.	2-13/16 in.	1-3/4 in.	Square	86234 (Each)	---
3/8 in.-16	1-3/4 in.	4-13/16 in.	1-3/4 in.	Round	86216 (Each)	86224 (Each)
3/8 in.-16	1-5/8 in.	3-9/16 in.	1-3/4 in.	Square	86219 (Each)	86227 (Each)
3/8 in.-16	2-1/8 in.	4 in.	1-3/4 in.	Square	86208 (Pair)	---
3/8 in.-16	3-1/8 in.	3 in.	1-3/4 in.	Square	86209 (Pair)	---
3/8 in.-16	3-1/8 in.	4 in.	1-3/4 in.	Square	86210 (Pair)	---
3/8 in.-16	4-1/8 in.	3 in.	1-3/4 in.	Square	86211 (Pair)	---
1/2 in.-13	1-9/16 in.	4-1/16 in.	2 in.	Square	86213 (Each)	86221 (Each)
1/2 in.-13	2-1/16 in.	4-13/16 in.	2 in.	Square	86215 (Each)	86223 (Each)
1/2 in.-13	2-1/8 in.	4 in.	2 in.	Square	86204 (Pair)	---
1/2 in.-13	2-3/8 in.	5-3/8 in.	2 in.	Round	86217 (Each)	86225 (Each)
1/2 in.-13	3-1/16 in.	3-13/16 in.	1-1/2 in.	Square	86214 (Each)	86222 (Each)
1/2 in.-13	3-1/16 in.	6-11/16 in.	2 in.	Round	86218 (Each)	86226 (Each)
1/2 in.-13	3-1/8 in.	3 in.	1-1/2 in.	Square	86205 (Pair)	---
1/2 in.-13	3-1/8 in.	4 in.	2 in.	Square	86206 (Pair)	---
1/2 in.-13	4-1/8 in.	3 in.	2 in.	Square	86207 (Pair)	---
1/2 in.-13	3-1/16 in.	4-5/16 in.	2 in.	Square	86328 (Pair)	---
1/2 in.-13	3-1/16 in.	5-5/16 in.	1-3/4 in.	Square	86329 (Pair)	---
1/2 in.-13	3-1/16 in.	6-5/16 in.	2 in.	Square	86330 (Pair)	---

SPARE TIRE CARRIER

SIDE MOUNT TIRE CARRIER

Designed for trailers with side rails, this mount fits both 4- and 5-lug wheels. The adjustable bolt circle fits most standard patterns. US Patent #6,116,483.

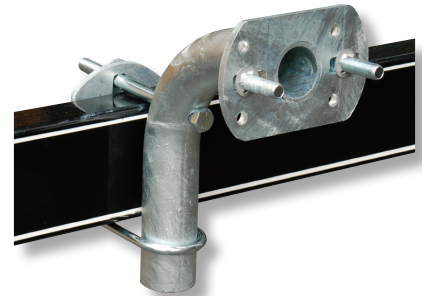
Galvanized Part ID: **86098**
Zinc-plated Part ID: **86099**
Black Powder Coat Part ID: **86100**



HIGH MOUNT TIRE CARRIER

This hot-dip galvanized mount fits 4-, 5-, and 6-lug wheels up to 13 in. wide by 4 in. high. The raised design improves clearance and visibility.

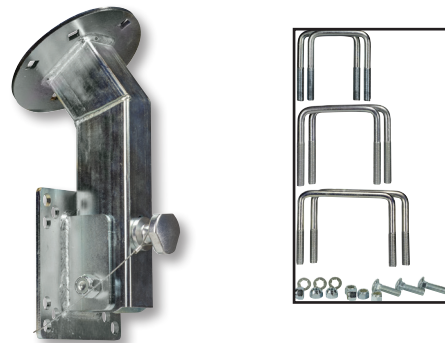
Part ID: **86101**



ANGLED/PIVOTING SPARE TIRE CARRIER

Mounts at an angle under the boat for added clearance. Fits 4-, 5-, and 6-lug wheels with 3, 4, or 5 in. trailer frame heights.

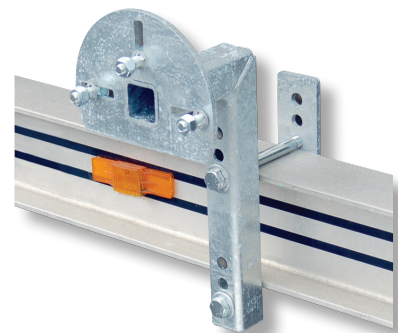
Zinc Plated Part ID: **86062**



HEAVY DUTY SPARE TIRE CARRIER

Made for larger trailer wheels, including aluminum and I-beam frames. Withstands heavy use and includes hardware for a secure installation.

Part ID: **86060**

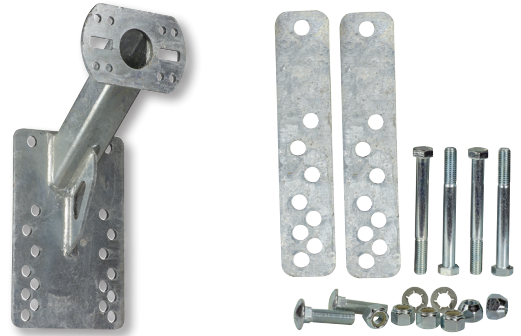


SPARE TIRE CARRIERS

SPARE TIRE CARRIER

Hot-dip galvanized and welded for strength. Adjustable to fit 4-, 5-, and 6-lug wheels. Includes bolts and lugs for installation.

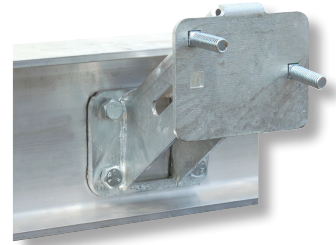
Part ID: **86069**



SPARE TIRE CARRIER FOR ALUMINUM TRAILERS

Designed for I-beam trailers, this galvanized carrier fits 4- and 5-lug wheels. Mounts through four 6/16 in. holes on trailer frame.

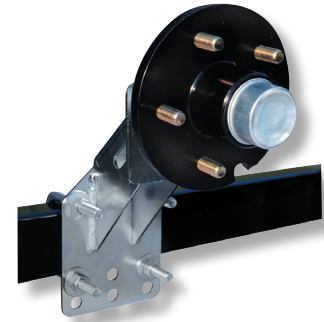
Part ID: **86064**



SPARE HUB & TIRE CARRIER

Includes pre-greased 5-lug hub with bearings. Fits 1.750 in., 1-1/16 in., and 1-3/8 in. spindles. Includes a security hole for lock use.

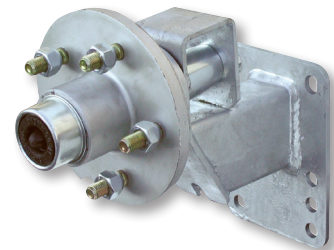
Part ID: **86079**



SPARE TIRE CARRIER WITH ELIMINATOR REMOVABLE SPINDLE/HUB

Fits all trailer frames up to 5 in. high. Comes with removable 5-lug pre-greased hub for Eliminator axles.

Part ID: **86068**



U-BOLT SPARE TIRE CARRIER

Zinc-plated to resist corrosion. Accommodates 4- and 5-lug wheels and trailer frames up to 3 in. wide.

U-bolt Tire Carrier With Brackets

Part ID: **86092**

U-bolt Tire Carrier Without Brackets

Part ID: **86091**



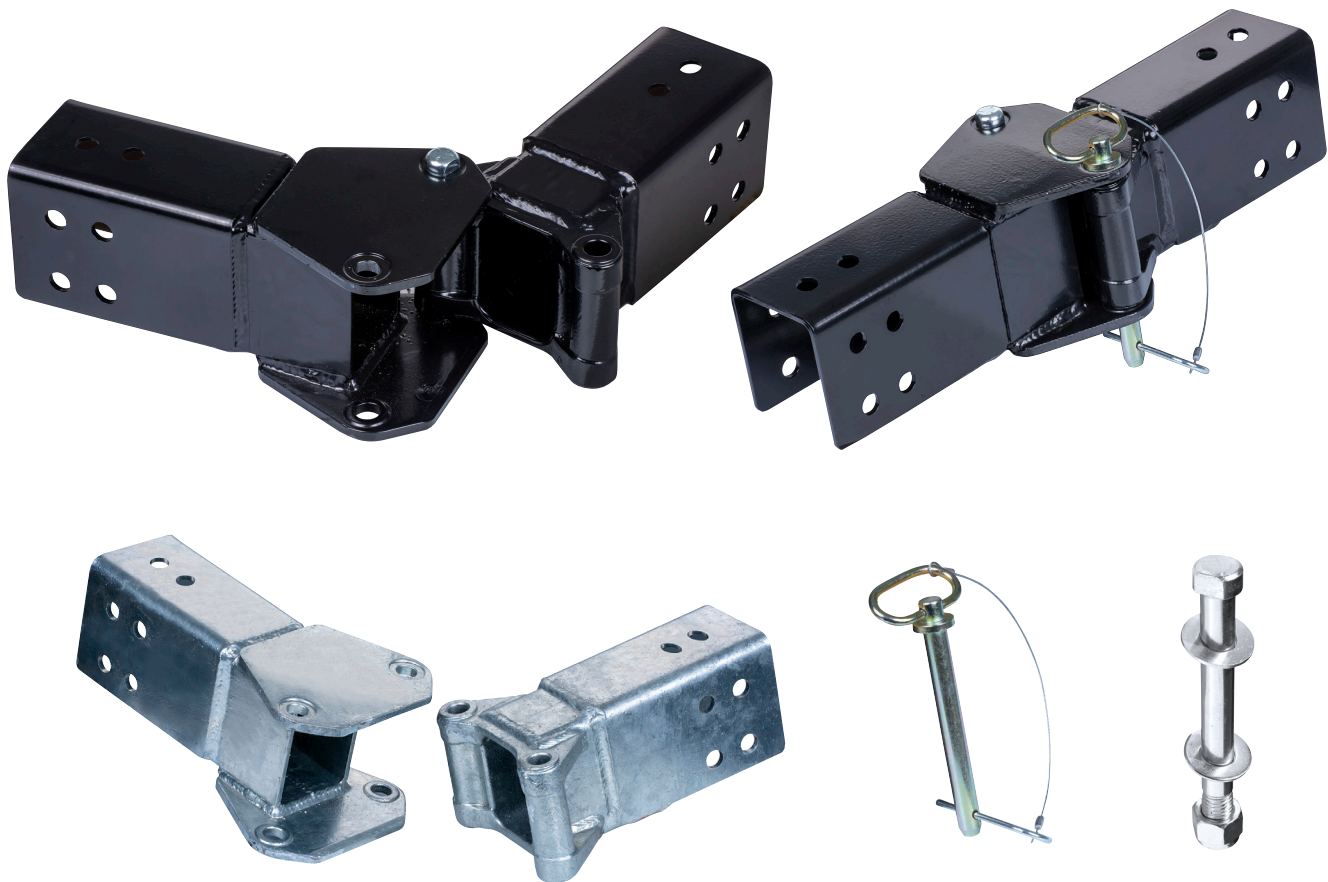
SPARE TIRE CARRIER

SWINGKING™

Convert a standard trailer tongue into a swing-away style with Tie Down's SwingKing™ Kit. This space-saving design allows easier trailer storage in tight spaces or garages. Available in 3x3, 3x4, and 3x5 tongue configurations, with black powder coat or galvanized finish for long-lasting durability. Each kit includes hardware, a pivot bolt, nut, pull pin with lanyard, and washers.

SwingKing™ Kits

Part ID:	Size	Finish
86510	3x3	Galvanized Kit
86511	3x3	Black PC Kit
86512	3x4	Galvanized Kit
86513	3x4	Black PC Kit
86514	3x5	Galvanized Kit
86515	3x5	Black PC Kit



TRANSOM STRAPS

Tie Down's Transom straps are designed to provide superior strength, reliability, and ease of use for all your hauling needs. Our straps combine robust construction with innovative design, ensuring your cargo is securely fastened and protected. With features that elevate them above the rest, Tie Down straps offer unmatched quality and peace of mind for every journey.

Premium Features:

- Safety Clip "S" Hook
- Double Diamond Stitch
- Wear-Indicator Line
- Comfort Handle

BOAT TRANSOM STRAP - 2 IN. X 48 IN. (2-PACK)

These heavy-duty retractable straps offer a 3000 lb. break strength and 1000 lb. working load. The powder-coated finish resists rust, while the retractable mechanism ensures fast and easy securing.

Black Powder Coat Part ID: **13966**
Stainless Steel Part ID: **13968**



BOAT TRANSOM STRAP - 2 IN. X 48 IN. (2-PACK)

Featuring a 1200 lb. break strength and 402 lb. working load, this version uses rugged polyester and built-in wear indicators for added safety. Vinyl-coated S-hooks and soft loop tie-downs included.

Part ID: **13994-BLK**



RETRACTABLE BOAT TRANSOM STRAPS

Secure your boat quickly with Tie Down's 2 in. x 43 in. retractable transom straps. Self-retracting mechanism with wear indicators and vinyl-coated S-hooks ensures long-lasting performance.

Part ID: **13995**



CABLES & STRAPS

HITCH CABLES

Tie Down's Hitch Cables feature a self-coiling design with corrosion-resistant finishes and vinyl jacketing for durability. Each cable is equipped with a safety latch or hook and designed for a wide range of towing applications—trailers, boats, campers, and more.



Class	Capacity	Description	Part ID:
1	2,000 lbs.	Black Vinyl Jacketed, w/wire safety latch	59533
2	3,500 lbs.	Galvanized w/wire safety latch	59535
2	3,500 lbs.	Black Vinyl Jacketed w/wire safety latch	59537
3	5,000 lbs.	Galvanized w/wire safety latch	59539
3	5,000 lbs.	Black Vinyl Jacketed w/wire safety latch	59541
4	7,000 lbs.	Galvanized w/wire safety latch	59543
4	7,000 lbs.	Black Vinyl Jacketed, w/wire safety latch	59545
4	7,000 lbs.	Black Vinyl Jacketed w/ Safety Latch Hook	59548

WINCH STRAPS

Made from durable polyester, each 2 in. wide strap offers a 5,000 lb. tensile strength and comes with a heavy-duty forged latch hook.



2 in. x 15 ft.	Part ID: 50465
2 in. x 20 ft.(a)	Part ID: 50470
2 in. x 20 ft. w/tail (b)	Part ID: 50472
2 in. x 25 ft.	Part ID: 50475
2 in. x 15 ft. w/PWC Strap (c)	Part ID: 50460

WINCH CABLES

Each cable is made from 7x19 galvanized aircraft cable and includes a heavy-duty latch hook and pull-proof loop. Compatible with most popular winches.

Cable Size	Capacity	Replaces/Model	Part ID:
5/32 in. x 25 ft.	2,800 lbs.		59378
3/16 in. x 20 ft.	4,200 lbs.		59379
1/8 in. x 20 ft.	2,000 lbs.	312	59380
3/16 in. x 25 ft.	4,200 lbs.	712	59385
3/16 in. x 50 ft.	4,200 lbs.	712A	59390
7/32 in. x 25 ft.	5,600 lbs.	912A, 912C	59395
7/32 in. x 50 ft.	5,600 lbs.	VS190, VR212	59400



QUICK LINKS

Zinc-plated links act as chain extenders or connectors.

5/16 in. Part ID: **50648**
3/8 in. Part ID: **50649**



HOOKS

Replacement zinc-plated latch hooks for cables or straps.

XBC55, 7,000 lbs. Part ID: **50640**
XEAEY, 12,000 lbs. Part ID: **50641**



“S” HOOK CHAIN KEEPERS

Secure multiple chains with Tie Down’s patented S-Hook Keepers. Meets specific regulatory requirements.

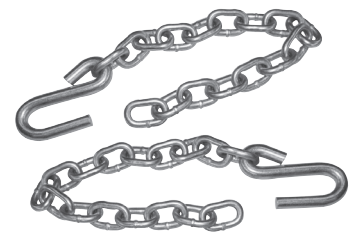
Part ID: **81255**



SAFETY CHAINS

Sold in pairs and built with zinc-plated steel, these chains feature e-hooks for secure attachment. Single chain also available.

Class 2, 3/16 in., OAL 31 in. Part ID: **81202**
Class 3, 1/4 in., OAL 31 in. Part ID: **81203**
Class 4, 5/16 in., OAL 40-3/4 in. Part ID: **81204**
Class 2, 3/16 in., OAL 36 in.
(single chain with S-hooks both ends) Part ID: **81205**



ACCESSORIES

BOW SAFETY CHAINS

Secure your boat during loading and transport with this durable bow safety chain. Made from 3/16 in. steel and measuring 15-1/2 in. total length, this chain attaches the boat to the bow stand on the trailer.

Part ID: **81201**



TIE DOWN FRAME BRACKET

Heavy-duty bracket designed to secure ratchet straps directly to your trailer frame. Made from 7-gauge steel with a hot-dip galvanized finish for corrosion resistance.

Part ID: **86567**



FLUTED SHACKLE BOLTS

Engineered to prevent turning, these 3/8 in. x 3 in. zinc-plated Grade 5 bolts feature a fluted design and include matching nuts.

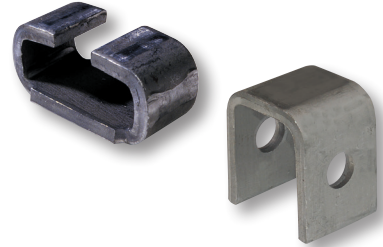
Part ID: **86250**



SPRING HANGERS

Designed for medium-duty axles, these 1/4 in. steel hangers are pre-drilled for 9/16 in. bolts. Rear hangers fit slipper springs (5,200–8,000 lbs.). Front hangers fit slipper or double-eye springs (1,000–3,500 lbs.).

Rear Spring Hanger (a) Part ID: **86275**
Front Spring Hanger (b) Part ID: **86274**



HEX HEAD BOLTS

Zinc-plated Grade 5 steel bolts with washers and nylon lock nuts. Sold in 4-packs.

3/8 in. x 3 in. Part ID: **86253**
3/8 in. x 4 in. Part ID: **86254**
3/8 in. x 1 in. Part ID: **86255**
7/16 in. x 1 in. Part ID: **86256**
1/2 in. x 3-1/2 in. Part ID: **86257**



UNIVERSAL TAIL LIGHT BRACKET

Made from 7-gauge hot-dip galvanized steel, this bracket is compatible with most trailer tail light bullets. One bracket per pack.

Part ID: **86566**



ACCESSORIES

LICENSE PLATE MOUNTING BRACKET

Built from heavy-duty aluminum tread plate, this bracket mounts your trailer's license plate securely with a multiple-hole design to fit most setups. One bracket per pack.

Part ID: **86565**



TAIL LIGHT PROTECTOR - ALUMINUM TREAD BRITE

Protects trailer tail lights from damage caused by road debris, stones, or other hazards. Made from durable aluminum tread plate and designed to mount between the light and bracket—no extra hardware needed.

Part ID: **86573**



TRAILER BOARDING STEP

Heavy-duty plastic boarding step designed for easy trailer access. The flow-thru tread provides slip resistance and drainage, making it ideal for wet environments. Mounts near the bow or tongue of the trailer for convenient entry and exit.

Part ID: **86469**





TIE DOWN
MANUFACTURING INGENUITY

MARINE DIVISION
ANCHORS

ANCHORS



DANFORTH® STANDARD®

Built for durability and trusted worldwide, the Danforth® Standard® Anchor is hot-dip galvanized and made from high-strength steel to handle harsh marine environments. Lightweight yet reliable, it offers solid holding power for a wide range of boats.

Part ID:	Model	Holding Power	Boat Length	Anchor Weight	Anchor Height	Anchor Width	Fluke Height
94010	S160	160 lbs.	< 10 ft.	3.5 lbs.	17-1/4 in.	13 in.	9 in.
94011	S300	300 lbs.	10-17 ft.	5 lbs.	19-1/2 in.	14-3/4 in.	10-1/2 in.
94012	S600	600 lbs.	17-27 ft.	9 lbs.	24 in.	18-1/4 in.	12 in.
94013	S920	920 lbs.	27-31 ft.	14 lbs.	28-1/4 in.	21-1/2 in.	14-1/4 in.
94014	S1300	1,300 lbs.	31-36 ft.	16 lbs.	31-3/4 in.	24 in.	16-1/2 in.
94015	S1600	1,600 lbs.	36-40 ft.	25 lbs.	35 in.	26-3/4 in.	19 in.
94016	S2000	2,000 lbs.	40-45 ft.	43 lbs.	40-1/4 in.	31 in.	22 in.
94017	S3000	3,000 lbs.	45-55 ft.	70 lbs.	50 in.	38 in.	26-1/2 in.
94018	S3500	3,500 lbs.	55-60 ft.	100 lbs.	54 in.	41 in.	28-3/4 in.

DANFORTH® HI-TENSILE®

Made from heat-treated, hot-dip galvanized 4130 steel, Danforth® Hi-Tensile® Anchors deliver deep bottom penetration and exceptional strength. Ideal for demanding marine conditions that require dependable holding power.

Part ID:	Model	Holding Power	Boat Length	Anchor Weight	Anchor Height	Anchor Width	Fluke Height
94019	5H	1,000 lbs.	< 31 ft.	5 lbs.	21-1/2 in.	16-1/2 in.	11-3/4 in.
94020	12H	1,800 lbs.	31-42 ft.	12 lbs.	28-1/4 in.	21-1/2 in.	13-1/2 in.
94021	20H	2,500 lbs.	42-50 ft.	20 lbs.	35 in.	26-3/4 in.	19 in.
94022	35H	3,800 lbs.	50-64 ft.	35 lbs.	40-3/4 in.	31 in.	22 in.
94023	60H	5,500 lbs.	64-73 ft.	60 lbs.	50 in.	38 in.	27" in.
94024	90H	6,300 lbs.	73-76 ft.	90 lbs.	54 in.	41 in.	29-1/4 in.
94025	150H	7,000 lbs.	76-80 ft.	150 lbs.	57-1/4 in.	43-1/2 in.	30-1/2 in.
94026	190H	7,700 lbs.	80-83 ft.	190 lbs.	61 in.	46 in.	33-1/2 in.

HOOKER ANCHORS

HOOKER QUIK-SET

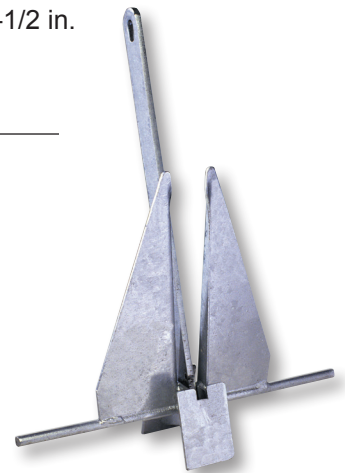
The Hooker Quik-Set Anchor is hot-dip galvanized and features a single-crown design for fast, secure setting. Built-in slip-ring makes for easy retrieval, while the fluke design improves penetration and holding power.



Part ID:	Model	Holding Power	Boat Length	Anchor Weight	Anchor Height	Stock Width	Fluke Height
95006	5HQ	120 lbs.	10-15 ft.	3.5 lbs.	13.5 in.	11-1/2 in.	9 in.
95011	7HQ	150 lbs.	15-19 ft.	4.5 lbs.	13.5 in.	14-1/2 in.	9-1/2 in.
95016	10HQ	160 lbs.	19-24 ft.	5 lbs.	16.5 in.	14-1/2 in.	10 in.
95021	13HQ	180 lbs.	24-28 ft.	6.5 lbs.	21 in.	18-1/4 in.	11-3/4 in.
95026	15HQ	200 lbs.	28-30 ft.	8 lbs.	21 in.	18-1/4 in.	14-1/2 in.

SUPER HOOKER

Designed as a rugged and cost-effective fluke-style option, the Super Hooker is built from hot-dip galvanized materials for long-lasting corrosion resistance. Delivers reliable holding power across a wide range of boats.



Part ID:	Model Size	Holding Power	Boat Length	Anchor Weight	Anchor Height	Stock Width	Fluke Height
95030	#2-1/2	130 lbs.	< 12 ft.	3 lbs.	17-1/4 in.	13 in.	9 in.
95035	#4	240 lbs.	12-16 ft.	4 lbs.	19-1/2 in.	14-3/4 in.	10-1/2 in.
95040	#8	480 lbs.	16-24 ft.	9 lbs.	24 in.	18-1/4 in.	12 in.
95045	#13	740 lbs.	24-30 ft.	14 lbs.	28-1/4 in.	21-1/2 in.	14-1/4 in.
95050	#18	1,050 lbs.	30-34 ft.	18 lbs.	31-3/4 in.	24 in.	16-1/2 in.
95055	#22	1,300 lbs.	34-38 ft.	25 lbs.	35 in.	26-3/4 in.	19 in.
95060	#40	1,600 lbs.	38-43 ft.	43 lbs.	40-3/4 in.	31 in.	22 in.
95065	#65	2,400 lbs.	43-53 ft.	75 lbs.	50 in.	38 in.	26-1/2 in.
95070	#85	2,800 lbs.	53-60 ft.	96 lbs.	54 in.	41 in.	28-3/4 in.

ANCHORS

ANCHOR KITS

DANFORTH® S600 ANCHOR KIT

This complete anchor kit includes the lightweight yet strong Danforth® S600 Anchor, a 150 ft. nylon anchor line, stainless steel chain, and two shackles. With a 600 lb. holding power, it's ideal for boats between 17–27 ft.

Part ID: **95096**



SUPER HOOKER KITS

#8 Anchor Kit

Comes with the #8 Super Hooker Anchor, 100 ft. nylon line, 6 ft. galvanized chain, and two 5/16 in. shackles. Weighs just 9 lbs. and offers 480 lbs. holding power for boats 16–24 ft.

Part ID: **95095**

#13 Anchor Kit

Includes the #13 Super Hooker Anchor, 100 ft. nylon line, 6 ft. chain, and two 5/16 in. shackles. With a 740 lb. holding power, it's a strong option for boats 24–30 ft.

Part ID: **95100**



HOOKER QUIK-SET 10HQ ANCHOR KITS

This lightweight kit features the 10HQ Quik-Set Anchor, 100 ft. nylon line, 4 ft. galvanized chain, and two shackles. At only 5 lbs., it provides 160 lbs. of holding power and fits boats 19–24 ft.

Part ID: **95090**



TIE DOWN MATE

The Tie Down Mate makes anchoring easy, even in tough conditions. With a removable handle that stores inside the tube, this innovative system includes a 15 ft. line, water float, and carrying bag.

Tie Down Mate

Part ID: **86071**

Tie Down Mate Kit

Part ID: **86072**



ANCHOR ACCESSORIES

DANFORTH ANCHOR LINE

Made from 100% premium nylon, Danforth Anchor Lines offer a safe working load of 650 lbs. and a 3,240 lb. tensile strength. UV inhibitors preserve strength and color.

100 ft. Part ID: **18030**

150 ft. Part ID: **18032**



GALVANIZED CHAIN & SHACKLES

Zinc-coated for corrosion resistance and strength, these chains and shackles offer secure attachment for anchors and marine use.

Part ID:	Chain	Shackles	Working Load
95130	1/4 in. x 6 ft.	1/4 in. / 2 ea.	1,250 lbs.
95135	5/16 in. x 6 ft.	5/16 in. / 2 ea.	1,900 lbs.
95140	3/8 in. x 6 ft.	3/8 in. / 2 ea.	2,650 lbs.
95131	3/16 in. x 4 ft.	Expanded Link	800 lbs.
95132	1/4 in. x 6 ft.	Expanded Link	1,250 lbs.
95133	5/16 in. x 6 ft.	Expanded Link	1,900 lbs.
95134	1/4 in. x 5 ft.	Expanded Link	1,250 lbs.



POLYMER COATED ANCHOR CHAIN

Coated in durable white polymer, this chain helps flukes penetrate better while resisting abrasion. Available in 4 ft. and 6 ft. options.

4 ft. Part ID: **95215**

6 ft. Part ID: **18001**



ANCHOR DISPLAY STAND

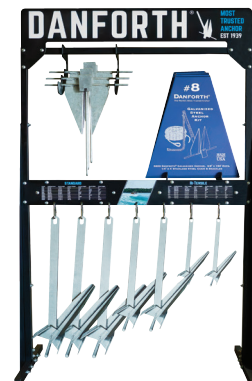
The Anchor Display Stand showcases up to 14 anchor models. Powder-coated finish, header card included.

Danforth Anchor Display
Display Stand with Header Card
Header Display Card Only

Part ID: **94098**

Part ID: **94099**

Part ID: **15099**



NAUSTEPS-LITE

NAUTISTEPSLITE

Spring-Assisted Dock Ladder

NautiSteps Lite is a compact, spring-assisted ladder engineered for smooth, easy access in and out of the water.

Its spring-assisted lift makes raising and lowering effortless, while the lightweight aluminum frame is built to last. Non-slip polypropylene flow-thru steps offer secure footing for all ages, and a 300 lb. weight capacity ensures dependable performance.

Choose from a durable powder-coated finish or textured aluminum to match your dock's style and environment.

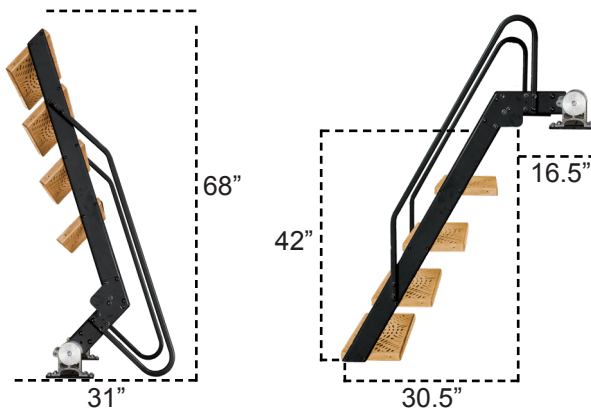
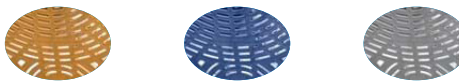


Key Features

- Spring-assisted lifting design, for minimal pull effort
- Slow-fall design for safe & controlled descent
- Constructed of heavy duty aluminum
- Powder coat painted frame for a lasting finish



- Polypropylene steps: Durable, non-slip surface



NAUTISTEPS-LITE



Black with Camel Steps
Part ID: 43140



Gray with Navy Steps
Part ID: 43141



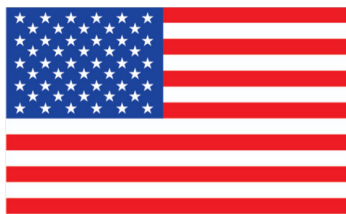
Textured Aluminum with Gray Steps
Part ID: 43142



Compact Size



Easy to Use



MADE IN THE USA

TIE DOWN
MANUFACTURING INGENUITY

DOCK LADDERS

DOCK LADDERS

With a 300 lb. weight capacity, these Dock Ladders are built to perform in marine environments. Choose between a corrosion-resistant galvanized finish or a vibrant blue powder coat. Each ladder is crafted with welded, galvanized steel steps for strength and durability. Available in 3, 4, or 5-step options to match your dock height.



Blue Powder Coat	Part ID:
3 Step Ladder	27273
4 Step Ladder	27274
5 Step Ladder	27275

Replacement Step (1 per pack)	25505
----------------------------------	--------------



Galvanized	Part ID:
3 Step Ladder	28273
4 Step Ladder	28274
5 Step Ladder	28275

Replacement Step (1 per pack)	25508
----------------------------------	--------------

ALUMINUM DOCK LADDERS

These marine-grade Aluminum Dock Ladders are lightweight and corrosion-resistant—ideal for saltwater docks. Each model features grooved tread steps welded directly into the frame for stability and slip resistance. Rated for 300 lbs. and available in 3, 4, or 5 steps.

Aluminum	Part ID:
3 Step Ladder	29273
4 Step Ladder	29274
5 Step Ladder	29275

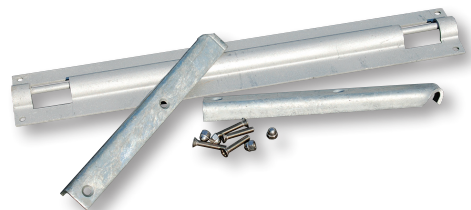
Replacement Step (1 per pack)	25509
----------------------------------	--------------



SPEED RELEASE MOUNTING BRACKET

This bracket allows quick and secure installation of your Tie Down dock ladder. Made from galvanized steel for rust resistance in freshwater and saltwater, the bracket simplifies mounting and removal without sacrificing strength.

Part ID: **27271**



DOCK HARDWARE

Tie Down's Dock Hardware is engineered for strength and corrosion resistance, available in Standard Grade (3/16 in.) or Commercial Grade (1/4 in.) galvanized steel. Ideal for building docks, ramps, or floating platforms, this lineup supports both wood dock kits and customized marine builds. Choose from standard sizes or combine pieces to fit your project needs.

LAG BOLT SET

Each Lag Bolt Set includes hot-dip galvanized 3/8 in. lag bolts, washers, and lock washers. Choose from standard or commercial grade hardware for secure dock-to-post or dock-to-frame assembly.

Standard/Commercial - 3/8 in. x 2 in.	Part ID: 24287
Standard/Commercial - 3/8 in. x 3 in.	Part ID: 24289
Standard/Commercial - 3/8 in. x 5 in.	Part ID: 24292



CARRIAGE BOLT SET

This bolt set features galvanized carriage bolts, washers, and nuts, offering a secure, flush finish for frame and panel connection. Designed for easy dock assembly.

Standard Grade - 3/8 in. x 2-1/2 in.	Part ID: 26534
Commercial Grade - 1/2 in. x 3 in.	Part ID: 26535
Commercial Grade - 1/2 in. x 5 in.	Part ID: 26536



HEX HEAD BOLT SET

Durable zinc-plated hardware set with hex head bolts, flat washers, and lock nuts. Ideal for general dock connections.

Part ID: **24279**



DOCK HARDWARE

CONNECTOR PIN SET

The Dock Connector Pin Set is a reliable solution for connecting male and female dock corners. It includes a galvanized steel pin, chain, and cotter ring to prevent loss. Available in standard and long lengths to fit a range of configurations.

3" Commercial Grade Pin
6" Commercial Grade Pin

Part ID: **26531**
Part ID: **26538**



OUTSIDE CORNER/FEMALE

Designed to connect securely with a male outside corner, the Outside Corner/Female ensures a tight and reliable dock system. Built from corrosion-resistant steel for repeated seasonal use.

Standard Grade - 1/2 in. welded tabs
Commercial Grade - 1/2 in. welded tabs
Commercial Grade - 3/4 in. welded tabs

Part ID: **26521**
Part ID: **26400**
Part ID: **26426**



OUTSIDE CORNER/MALE

Tie Down's Outside Corner/Male is designed to be used in tandem with a female outside corner for a secure modular dock system. Made from heavy-duty galvanized steel, this piece offers stability and long-lasting performance in fresh or saltwater environments.

Standard Grade - 1/2 in. welded tab (1)
Commercial Grade - 1/2 in. welded tab (1)
Commercial Grade - 3/4 in. welded tab (1)
Commercial Grade - 3/4 in. welded tab (3)

Part ID: **26522**
Part ID: **25491**
Part ID: **26418**
Part ID: **26540**



OUTSIDE CORNER END

Built to pair with inside corners, the Outside Corner End secures dock ends, swim floats, ski jump corners, and other marine platforms. Made from galvanized steel for lasting durability.

Standard Grade - 10 in. x 5 in.

Part ID: **26523**

Commercial Grade - 10 in. x 5 in.

Part ID: **26402**

Commercial Grade - 12-1/4 in. x 5 in.

Part ID: **26428**



INSIDE CORNER

This galvanized steel corner installs inside dock frames to strengthen corners and support heavy-duty loads. Works seamlessly with outside corners and is offered in multiple sizes and hole patterns.

Standard Grade:

8-1/4 in. x 5 in. with 2 in. elongated holes

Part ID: **26524**

Commercial Grade:

8-1/4 in. x 5 in. with 2-1/4 in. elongated holes

Part ID: **26403**

Commercial Grade:

8-1/4 in. x 5 in. with 3 in. elongated holes

Part ID: **26417**

Commercial Grade:

8-1/4 in. x 5 in. with square holes

Part ID: **26401**

Commercial Grade:

10-1/2 in. x 5 in. with 2-1/4 in.*

Part ID: **26424**

Commercial Grade:

8-1/4 in. x 5 in. with 2-1/4 in.*

Part ID: **26430**

*Elongated holes and larger brace



INSIDE ROLLING RAMP BRACKET

This rugged ramp bracket helps align and support ramp entry points. Made of galvanized steel and paired with a UHMW plastic roller, it offers smooth rolling action and a secure dock-to-ramp connection.

Rubber Roller

Part ID: **26431**

UHMW Plastic Roller

Part ID: **26451**



DOCK HARDWARE

MALE T CONNECTOR

Used with the female version, the Male T Connector features a welded 1/2 in. tab for joining dock sections. Fits ramps, fingers, and modular dock builds.

Standard Grade

.438 in. Square Holes 3.5 in. OC

Part ID: **26532**

Commercial Grade

.562 in. Square Holes 3.5 in. OC

Part ID: **26408**

Commercial Grade with 3/4 in. tab

.562 in. Square Holes 3.5 in. OC

Part ID: **26427**



FEMALE T CONNECTOR

The Female T Connector mounts to the dock side and provides attachment points for accessories and ramps. Includes two welded tabs for strong, stable connections.

Standard Grade

.438 in. Square Holes 3.5 in. OC

Part ID: **26528**

Commercial Grade

.562 in. Square Holes 3.5 in. OC

Part ID: **26407**



WASHER PLATE

Washer plates provide critical support at dock angles, reinforcing the connection between bolts and framing. Made from galvanized steel, these 1-1/2 in. x 5 in. plates add strength and peace of mind to your build.

Standard Grade

.438 in. Square Holes 3.5 in. OC

Part ID: **24284**

Commercial Grade

.562 in. Square Holes 3.5 in. OC

Part ID: **26409**



BACKING PLATE

Designed to reinforce single T connectors, the Backing Plate is a quick, effective way to strengthen dock frames. Its 5 in. x 5 in. square design ensures a flush fit and long-lasting stability for marine builds.

Commercial Grade

.562 in. Square Holes 3.5 in. OC

Part ID: **26413**



DOCK HARDWARE

ANGLE BRACKETS & CLIPS

These heavy-duty angle brackets reinforce dock corners and cross bracing with dependable strength. Made from 1/4 in. commercial-grade steel, they're built to resist rust and wear in demanding marine conditions.

10 in. x 3 in., 3 holes

Part ID: **26379**

2-1/2 in. x 2-1/2 in.

Part ID: **26399**

2-3/4 in. x 2-1/2 in.

Part ID: **26392**

2-1/2 in. x 5 in.

Part ID: **26406**

2-1/2 in. x 5 in. (a)

Part ID: **26527**

4 in. x 7 in. (b)

Part ID: **26380**

3 in. x 3 in. x 5 in.

Part ID: **26398**

4 in. x 8 in.

Part ID: **26397**

Cleat Angle

2-3/4 in. x 5 in.

Part ID: **26422**

a



b



INSIDE CORNER PIPE HOLDER

This bracket supports dock pipes at internal corners and is built from galvanized steel for strength in high-demand dock setups. Compatible with most outside corner hardware, it holds pipe securely in place using a carriage bolt.

Inside Corner Pipe Holder 2 in. ID.

Standard Grade

Part ID: **26526**

Commercial Grade

Part ID: **26405**

Inside Corner Pipe Holder 3 in. ID.

Standard Grade

Part ID: **26525**

Commercial Grade

Part ID: **26404**



OUTSIDE PIPE HOLDER

The 3 in. Outside Pipe Holder provides a strong and secure mounting point for guide pipes on the outside edge of your dock. Built for 2 in. pipes with a 3 in. inner diameter, it's made to withstand the elements and resist corrosion. Requires a carriage bolt set (sold separately).

Standard Grade
Commercial Grade

Part ID: **24280**
Part ID: **26411**



CHAIN RETAINER

Attach chains directly to the dock with this compact yet durable retainer. Measuring 5 in. x 5 in., it accommodates 14 in., 3/8 in., and 1/2 in. chain sizes with ease, offering dependable function without taking up much space.

Standard Grade
Commercial Grade

Part ID: **26529**
Part ID: **26410**

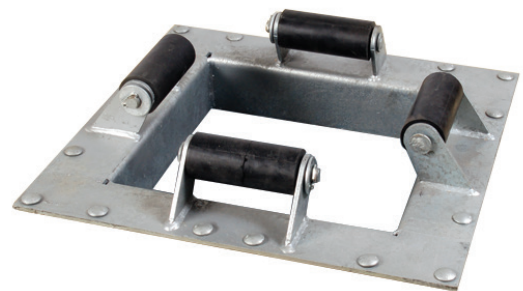


14" INTERNAL PILE HOLDER

This rugged Internal Pile Holder secures pilings up to 14 in. in diameter. With dual rubber rollers and a wide frame, it allows for smooth movement and absorbs pressure from tidal changes or dock motion. Measures 24 in. x 24 in. x 7-5/16 in.

Commercial Grade
UHMW Plastic

Part ID: **26434**
Part ID: **26452**



DOCK HARDWARE

BACKING PLATE/HURRICANE STRAP

Built from 7-gauge steel, these Backing Plates offer sturdy attachment points for added reinforcement. Strategically placed holes allow for multiple mounting configurations.

Standard Grade

Backing plate - 2 in. x 18 in.

Part ID: **26369**

Backing plate - 4 in. x 15 in.

Part ID: **26385**

Backing plate - 4 in. x 18 in.

Part ID: **26396**

Backing plate - 4 in. x 24 in.

Part ID: **26439**

Backing plate - 4 in. x 31 in.

Part ID: **26384**



14" ROLLER PILE HOLDER

Designed to secure 1-1/2 in. pipe, this holder uses a 6 in. rubber roller to accommodate pilings up to 14 in. wide. Measures 14-1/4 in. x 4-1/4 in. x 22-1/2 in.

Commercial Grade

Part ID: **26423**



CHAIN PILE HOLDER

Securely holds a 3/8 in. galvanized chain with shackles, making it adaptable for various pile diameters. The 14 in. pile holder version measures 21-1/2 in. x 4-1/4 in. x 14-1/2 in.

Commercial Grade

Part ID: **26419**



PILING HOOP

Crafted from galvanized 1/4 in. steel, Tie Down's Piling Hoops deliver lasting strength for guide pipe support. Options are available to fit pilings from 8 in. to 14 in. in diameter.

Commercial Grade

14 in. x 3 in. with 4 in. radius for 8 in. Piles Part ID: **26429**

Commercial Grade

16 in. x 3 in. with 5 in. radius for 10 in. Piles Part ID: **26391**

Commercial Grade

18 in. x 3 in. with 6 in. radius for 12 in. Piles Part ID: **26394**

Commercial Grade

20 in. x 3 in. with 7 in. radius for 14 in. Piles Part ID: **26393**



DECK PLATE

This heavy-duty Deck Plate attaches components to your dock and works with piling hoops to bolt the angle in place. Measuring 27 in. x 4 in. x 1/4 in., the plate's thick galvanized steel build offers reliable strength and easy, top-side installation

Commercial Grade

Part ID: **26416**



HEAVY DUTY PILING HOOP

Made for pilings up to 12 in. diameter, this hoop uses a 1-1/2 in. pipe and hot-dip galvanized steel for durability in harsh marine conditions. Mount directly to the dock or pair with the Deck Plate.

Commercial Grade

Part ID: **26412**



DOCK ROLLER ASSEMBLY

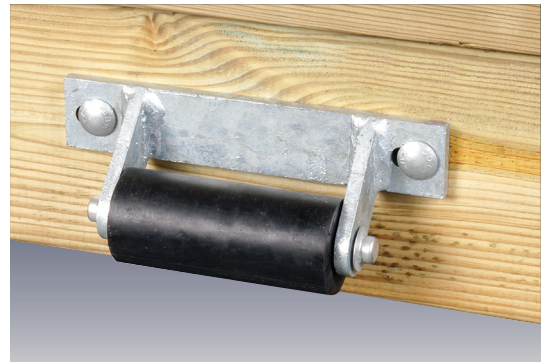
Built for easy dock adjustments, this assembly includes a 6 in. rubber or UHMW roller and a 3/4 in. stainless shaft with cotter pins. Mount with Deck Plates (26416 or 26448).

Rubber Roller

Part ID: **26414**

UHMW Plastic Roller

Part ID: **26453**



PILING HOOP ROLLER ASSEMBLY

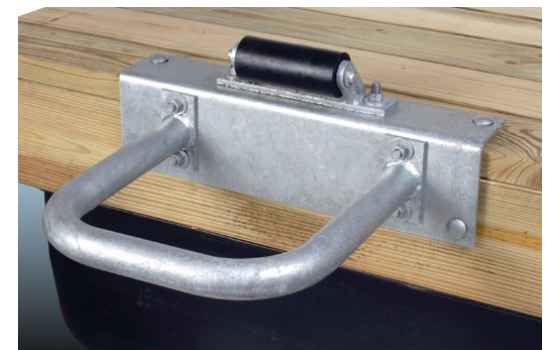
Handles piling movement up to 14 in. diameter. The rugged hoop works with either roller type for smooth vertical travel and reduced wear.

Rubber Roller

Part ID: **26415**

UHMW Plastic Roller

Part ID: **26454**



DOCK HARDWARE

PILING ROD

Designed for changing tides and mooring flexibility, these galvanized rods include welded base tabs for easy mounting. Use with 1/2 in. Piling Ring (26442).

Commercial Grade 5 ft.
Commercial Grade 6 ft.

Part ID: **26440**
Part ID: **26441**



PILING RING

The 1/2 in. x 4 in. galvanized steel Piling Ring provides a mooring tie-off point when used with Tie Down's Piling Rods (sold separately).

Part ID: **26442**

ROUND PILING HOOP

This commercial-grade, 2 in. round steel piling hoop features 3/8 in. welded tabs for a reliable dock attachment. This hoop features 3/8 in. welded tabs for a reliable dock attachment. Combine with the Universal Deck Plate (26448) or mount directly to the dock. Available in 12, 14, or 16 in. sizes.

Commercial Grade 12 in.
Commercial Grade 14 in.
Commercial Grade 16 in.

Part ID: **26444**
Part ID: **26445**
Part ID: **26446**

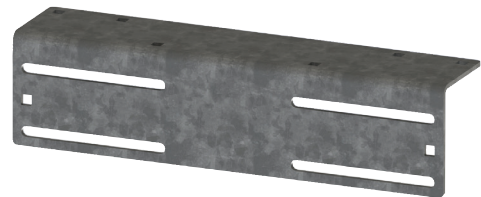


UNIVERSAL DECK PLATE

Measuring 24 in. x 6 in. x 1/5 in., this heavy-duty plate includes holes for top and side mounting. Designed to pair with any Tie Down piling hoop or Dock Roller Assembly.

Commercial Grade

Part ID: **26448**



DELIVERING INNOVATIVE SOLUTIONS

Tie Down aims to produce the highest-quality products. This aim not only applies to our marine products, but to every industry we serve. From manufactured housing to marine, safety to roofing, agriculture to outdoor living, we continue to push boundaries and deliver innovative solutions.

Check out our website for more information on the industries we serve. www.tiedown.com



SAFETY



ROOFING



MARINE



MANUFACTURED HOUSING



AGRICULTURE



OUTDOOR LIVING

TIE DOWN

MANUFACTURING INGENUITY



Marine Division
Atlanta, Georgia 30336
800-241-1806 • 404-344-0000
www.tiedown.com

Trade, brand, and product names are the property of TIE DOWN
ISO 9001:2015 Certification
Catalog #15394 (A2093, Rev. 8/15/2025)
©2025 TIE DOWN, Inc.



**SUBSCRIBE ON
YOUTUBE TO SEE MORE**