



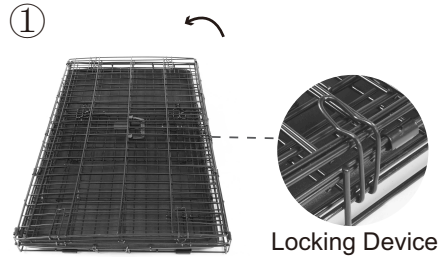
SKU: 21604



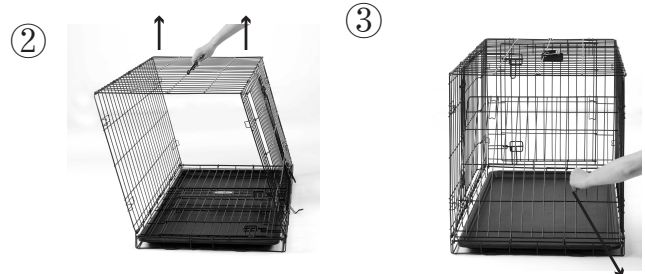
For safety, remove leash and collar before allowing pet to enter the crate.

## Assembly Instructions (Pictures may vary from actual product)

1. Remove the folded crate from the carton.  
Unlatch the Locking Device located on the side.

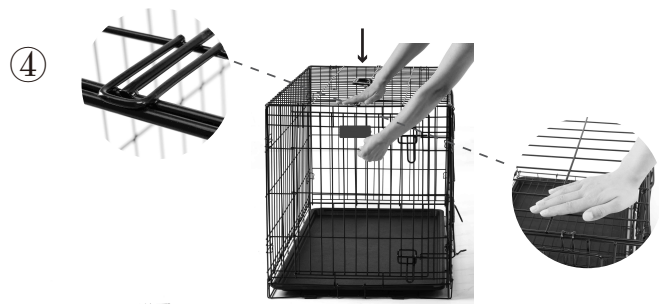


2. Grab any wire on the Top Panel and turn it like the page of a book. Then grab the crate and pull it upwards until it is fully extended and the sides are vertical.



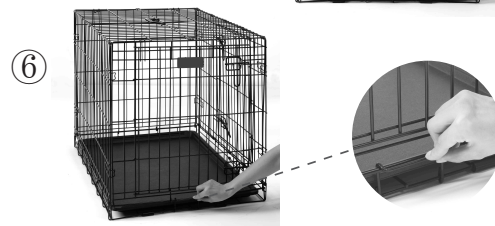
3. Reach in the crate and pull the Door Panel forward until it fits into the hooks on the ends of the Side Panels.

4. To secure the Door Panel to the Top Panel, gently pull forward on the Door Panel while pushing down on the Top Panel, and then fit the hooks over the end wire on the top. Ensure the Door Panel is fully engaged with all hooks on the sides and top.



5. Repeat Step 3 and 4 with the End Panel.

6. Secure the Plastic Pan in place by securing the pan stop latch over the bottom front wire as shown in the picture.



To disassemble, reverse this process.

## 1 YEAR LIMITED WARRANTY

Warranty covers any defects in materials used to manufacture your product, defects in workmanship under normal use, and any broken components under normal use.

The company will provide replacement parts for any broken parts, the product will be exchanged with a new product, or the price of product will be refunded.

This warranty gives you specific legal rights, and you may also have other rights which may vary from state to state.

Distributed by: Win World International Trade LLC., Camarillo, CA  
[www.winworldinternational.com](http://www.winworldinternational.com) & [www.JJShelter.com](http://www.JJShelter.com)  
Made in China

In the event of missing or defective parts please contact  
[customerservice@winwordinternational.com](mailto:customerservice@winwordinternational.com)