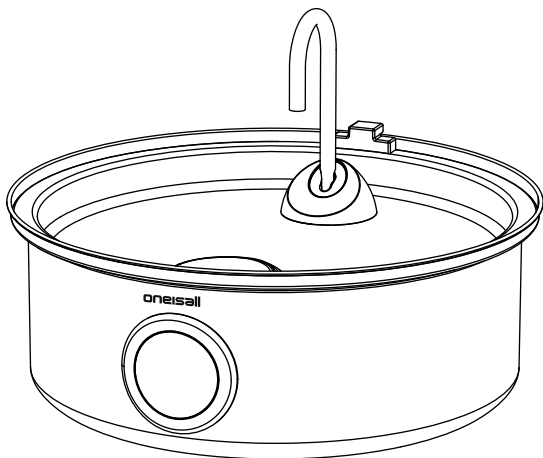


# Stainless Steel Dog Fountain



User Manual

ON-D141

# Dear Customer

---

Thank you for supporting us.

In order to provide your pet with fresh and clean water continuously, please read the manual carefully.

If you have any problems during use please contact us in time to help you solve the problem.

Email us: [support@oneisall.com](mailto:support@oneisall.com)

We show case buyer's voice on our website regularly.

You are welcome to record and share your own experience of our products.

For more information,you can visit our website: [www.oneisall.com](http://www.oneisall.com)



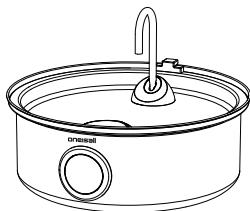
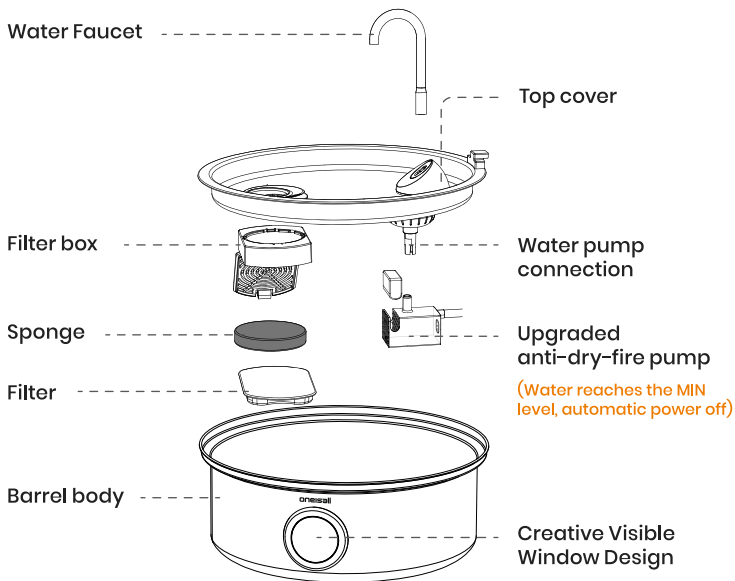
Installation Tutorial



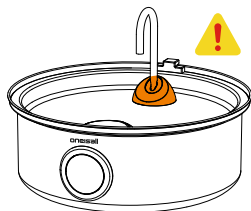
Water pump  
cleaning video

# What You have

---



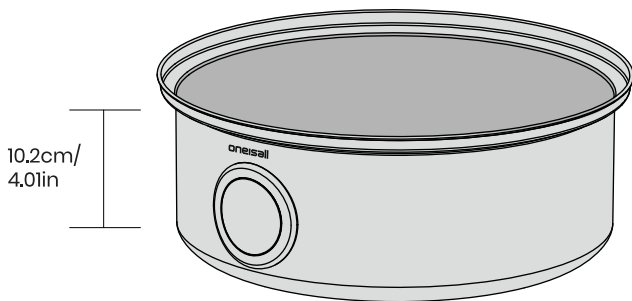
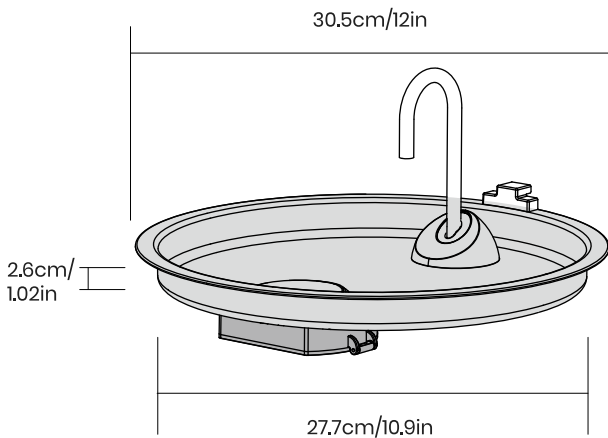
**Blue light:** water is sufficient



**Red light:** the water level has reached the minimum water level line, need to add water

# Product Details

---



## Before We Start: Care Instructions

---

In order to provide your pet with fresh and clean water continuously, please read and remember these three simple tasks

### Refill Often

Please keep the water level above MIN water Line or full all the time. The pump is designed to work in water at least MIN water line. If the pump dries without water, it may cause malfunction.

### Clean the pump and fountain

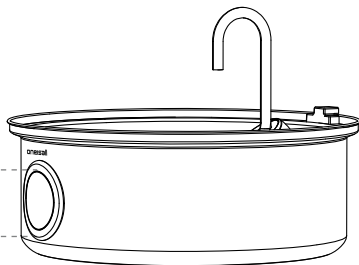
Clean the pump and fountain apart with the soap and warm water every 2 to 4 weeks. Be careful not to get soap in the filter, as it will not rinse out.

### Replace filters on a regular basis

Replace carbon filter every 2 to 4 weeks when you clean your fountain. Replace the sponge and foam filter every 1 to 2 months depend on use frequency.

MAX

MIN



# Let's Get Started

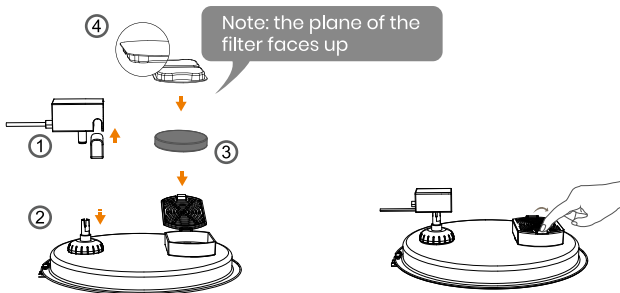
---

1. Soak the filter in a separate bowl of clean water for 5 minutes



- 1 Place the small sponge in the side of the pump
- 2 Place the pump into holder
- 3 4 Put the soaked activated carbon filter and white foam in the filter case and close it. First put the filter cotton, then put the carbon filter

**Note: the plane of the filter faces up**



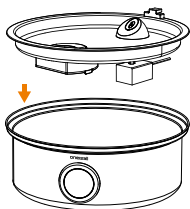
## Notice:

1. The filter must be fully soaked before using the fountain; Otherwise the water may not diffuse through the filter and case overflow.
2. Do not soak the filter in the fountain tank to avoid dust on the surface.

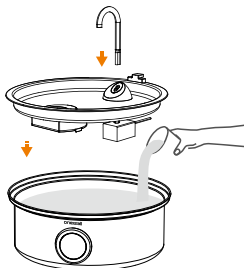
# Let's Get Started

---

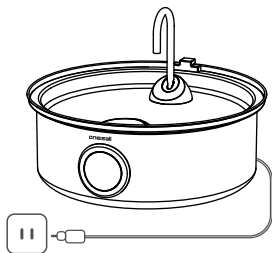
## 2. Install the top cover



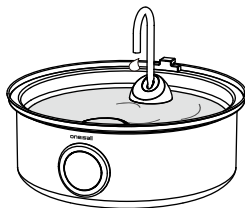
## 3. Plug the water faucet firmly, then add water to MAX line



## 4. Power on



## 5. Start using



### Notice:

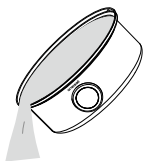
1. Fill water to MAX water level in bowl. Place the water fountain in a place where your pet will use it.
2. Make sure the power cord adapter and your hands are dry, then contact the power cord.
3. Keep healthy and happiness flowing!

# Clean regularly

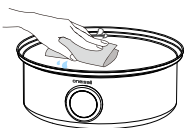
---

For your pet to have healthy and clean water at all times, please wash the basin and top cover once every 2 weeks.

1. First pour out the water in the water dispenser



2. Clean all parts of the water dispenser with warm water and soap or a mild detergent. You can use a sponge or soft bristle brush to clean them.



3. Rinse all parts of the dispenser thoroughly with water and make sure there is no residual soap or detergent.



4. Dry the cleaned parts of the dispenser and reassemble it according to the instructions in the manual.

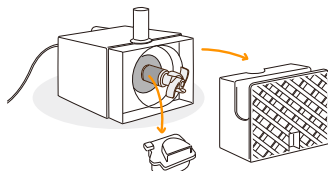


## Cleaning the pump is essential to the longevity of the fountain. Please clean the pump at least every 2 weeks.

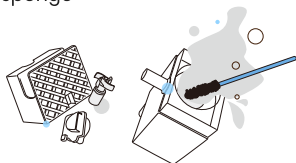
---

Hi,I'm the oneisall Pump! I'm the heart of your new fountain and I need to be cleaned regularly to keep me running well! I can keep working until one year, two years,three years, four years or even more.Let me show you how!

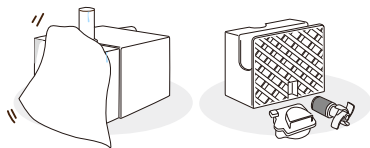
1. Disassemble the pump by releasing the sponge (A, pump cover B and the impeller C) from the side of the pump as shown



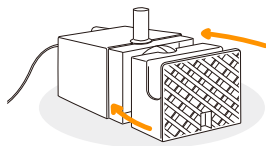
2. Clean the pump thoroughly using small brush with soap,under running warm water.Repeat the cleaning for the other parts (pump cover, impeller) and hand-wash the sponge



3. Wipe the pump using clean dry cloth to remove magnetic debris that may stick on the parts



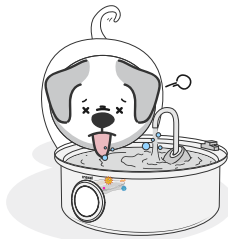
4. Put all the parts back in order to reassemble the pump,Congratulations! You've finished cleaning and now I'm ready to get back to work!



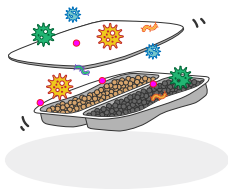
## Frequent cleaning increases the service life of the filter element

---

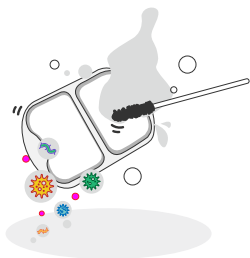
1. After a week of use the pet water fountain



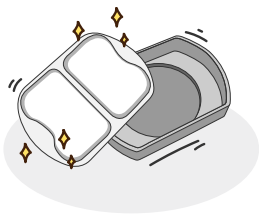
2. The filter contains a large amount of food residue and hair



3. Regularly clean the filter element with a brush



4. Reposition the cleaned filter element into the water dispenser



5. Dog water fountains can filter properly again



# Product Specifications

---

Input	100-240 V
Rated Voltage/Current	DC 5V = 1A
Product Name	oneisall Pet Fountain
Model	PWF-002-B
Noise	About 35 dB
Net Weight	2.54 lb (1.15kg)
Gross Weight	3.09 lb (1.40kg)
Length of Charging Cable	59 inch (150cm)
Product Size	12.2 x 12.2 x 4.57 inch

## Q&A

---

### **Q: How can I get the filters and water pump?**

A: Here with the Water Pump asin: B0D9JPDBGR,  
Filter asin: B0C4NNQY4R

### **Q: What if the product does not spray water?**

A: Please check whether the water level is lower than MIN, if the water level is normal, please clean the pump.

### **Q: How often do I need to change my Pet water fountain filter?**

A: The water pump and dispenser need to be cleaned every 1-2 weeks, every 2-4 weeks you need to change the cartridge, we will provide you with 2 extra sets of Filters

# Contact Us

---

## WE ARE READY TO HELP

oneisall offers a standard 2-year warranty. If you have any issues with your oneisall product, please do not hesitate to contact us. Be sure to include your proof of purchase, model number, and any relevant photos or videos in your message to expedite the process. Our oneisall support team is available 7 days a week and will respond to your inquiry within 24 hours. Thank you for choosing oneisall.

Please note that the oneisall warranty does not apply to used products or purchases made from unauthorized sellers. It's important to be aware that the warranty also does not cover consumable parts such as blades, guards, filters, brushes, and similar items. These parts may require regular replacement or maintenance.

✉ [support@oneisall.com](mailto:support@oneisall.com)

📞 +1 877-522-8578 (US) Mon-Fri 8am-5pm(PST)

🌐 [www.oneisall.com](http://www.oneisall.com)



@Oneisall Official