

USER MANUAL

TRAVELLER X

6042687

1-1/2 TON LOW PROFILE ALUMINUM FLOOR JACK



SPECIFICATIONS

Weight Capacity	1-1/2 Ton
Minimum Height	3-1/2 in
Maximum Height	14 in

WARNING INFORMATION



This is the safety alert symbol. It is used to alert you to potential personal injury hazards. Obey all safety messages that follow this symbol to avoid possible injury or death.

⚠️ WARNING

WARNING: Indicates a hazardous situation which if not avoided, could result in death or serious injury.



IMPORTANT: READ THESE INSTRUCTIONS BEFORE USE.

Before using this jack, read this manual completely and thoroughly, understand its operating procedures, safety warnings and maintenance requirements.

It is the responsibility of the owner to make sure that all personnel read this manual prior to using this jack, it is also the responsibility of the jack owner to keep this manual intact and in a convenient location for all to see and read.

⚠️ WARNING

BEFORE USING, READ AND UNDERSTAND ALL WARNINGS AND OPERATING INSTRUCTIONS.

- ✓ Do not overload this jack beyond the rated capacity.
- ✓ Use jack on a hard, level surface.
- ✓ Use only for lifting purposes.
- ✓ Place axle stands under vehicle immediately after it has been elevated on the jack.
- ✓ Do not move or dolly vehicle while on the jack.
- ✓ Never crawl under a jacked up object without using secondary safety devices that have an approved load rating greater than the load of the object.
- ✓ Position jack on areas of the vehicle as specified by the vehicle's manufacturer.
- ✓ Center load on saddle prior to lifting.
- ✓ Do not make alterations to the jack.
- ✓ Failure to heed to these warnings may result in loss of load and damage to the jack, as well as personal injury, death or property damage.

⚠️ WARNING


This product can expose you to chemicals including Di(2-ethylhexyl)phthalate (DEHP), which is known to the State of California to cause cancer and birth defects or other reproductive harm. For more information go to www.P65Warnings.ca.gov.

⚠️ WARNING

Contains lead. May be harmful if eaten or chewed. May generate dust containing lead. Keep out of the reach of children.

This floor jack is designed only for lifting part of the total vehicle, do not move or dolly the vehicle while it is on the jack.

Remember to place jack stands under vehicle immediately after it has been elevated on the jack.



THIS IS A LIFTING DEVICE ONLY!

- This jack is designed only for lifting part of the total vehicle.
- Do not move or dolly the vehicle while on the jack.
- The vehicle must be supported after lifting immediately by appropriately rated jack stands.
- NEVER go under a vehicle that is not supported with appropriately rated jack stands.
- Use wheel chocks or other blocking device on opposing wheels before using jack stands.

⚠ WARNING

Always use jack stands!

DO NOT USE wood blocks or any other non-approved load sustaining devices. The manufacturer only warrants loads to be sustained by jack stands that meet current ASME standards.

DO NOT USE wood blocks or any other non-approved lifting devices for a means of lifting with the jack and or load being raised. Failure to heed these warnings may cause injury or death.

INSPECTION



- Inspect the jack carefully before each use. Ensure the jack is not damaged, excessively worn, or missing parts.
- Do not use the jack unless it is properly lubricated.
- Using a jack that is not in good clean working condition or properly lubricated may cause serious injury.
- Inspect the work area before each use. Make sure it is free and clear of any potential hazards.

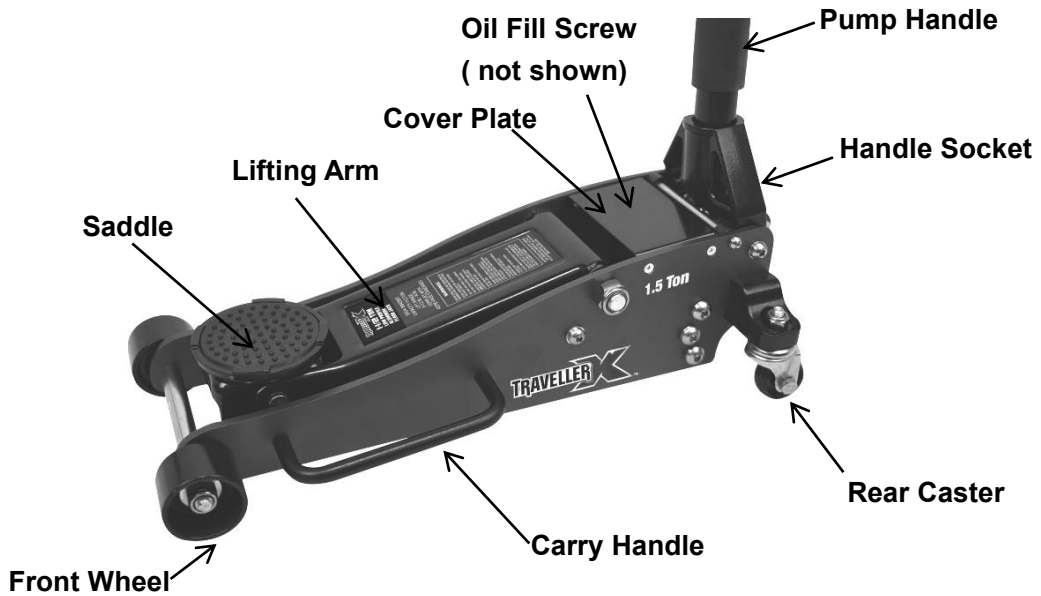
DO NOT OPERATE OR REPAIR THIS EQUIPMENT WITHOUT READING THIS MANUAL.

To maintain the Jack and user safety, the responsibility of the owner is to read and follow these instructions.

- Inspect the jack for proper operation and function.
- Keep instructions readily available for equipment operators.
- Make certain all equipment operators are properly trained; understand how to safely and correctly operate the unit.
- Allow unit operation only with all parts in place and operating properly.
- Service and maintain the unit only with authorized or approved replacement parts; negligence will make the jack unsafe for use and void the warranty.
- Carefully inspect the unit on a regular basis and perform all maintenance as required.
- Store this instruction manual in case of any use in the future.

BEFORE USE

Before using this product, read the owner's manual completely and familiarize yourself thoroughly with the product and the hazards associated with its improper use. (Please refer to the below figure).

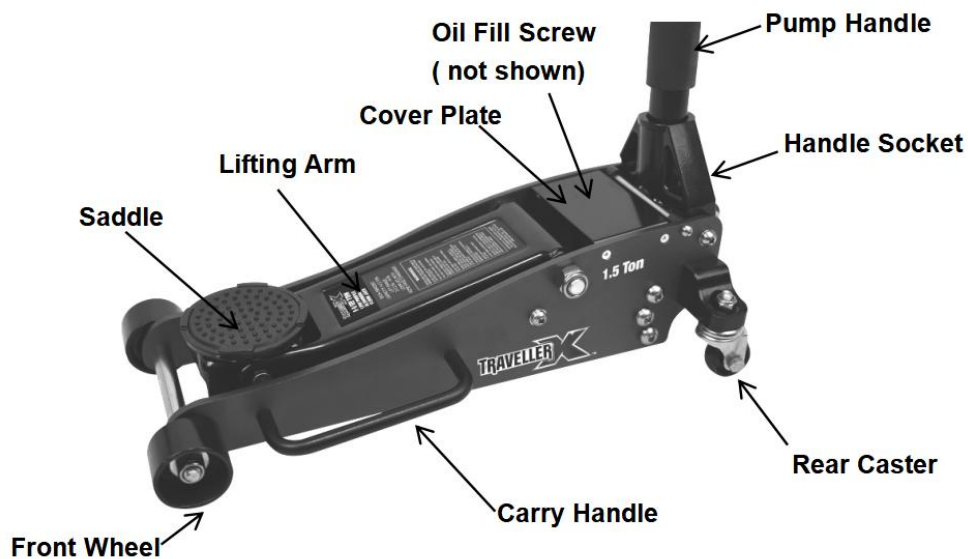


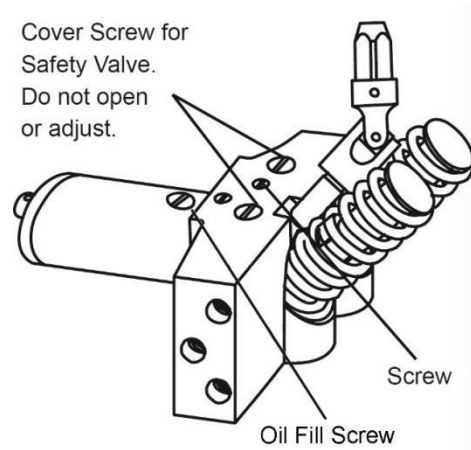
SYSTEM AIR PURGE



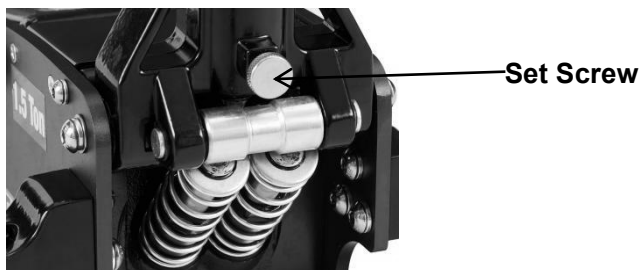
IMPORTANT: BEFORE FIRST USE!

Perform the following Air Purge Procedure to remove any air that may have been introduced into the hydraulic system as a result of product shipment and handling. This step is to be completed without any weight on the jack. (Please refer to the below figure).





- Use a Phillips head screwdriver to remove the two screws on both sides to remove the Cover Plate, then use a flat screwdriver to loosen the Oil Fill Screw.
- Fasten the Upper handle to the Lower handle. Loosen the Set Screw and insert the assembled Handle into the Handle Socket, and then tighten the Set Screw.
- Turn the Handle counterclockwise to open the Release Valve.



- Quickly pump the jack with assembled Pump Handle by 6-8 times to purge air from the system.
- Tighten the Oil Fill Screw and then reinstall the Cover Plate.
- Turn the assembled Pump Handle clockwise to close the Release Valve and now the jack is ready for use.
- Check for proper pump action.

**Check the pump operates smoothly before putting into service.
Inspect before each use. Do not use if bent, broken or cracked components are noted.**

OPERATION

⚠WARNING

Park vehicle on a flat, level, solid, surface safely away from oncoming traffic. Turn off the vehicle's engine. Place the vehicle's transmission in "PARK" (if automatic) or in its lowest gear (if manual). Set the vehicle's emergency brake. Then, chock the wheels that are not being lifted.

LIFTING:

- Block the vehicle's wheels for lifting stability. Secure the load to prevent inadvertent shifting and movement.
- Position the jack near desired lift point.
- Set the Parking Brake in the vehicle.
- Fasten the Upper handle to the Lower handle. Loosen the Set Screw and insert the assembled Pump Handle into the Handle Socket, and then tighten the Set Screw. Turn the assembled Pump Handle clockwise to close the Release Valve, **DO NOT over-tighten.**
- Carefully position the Saddle of the Jack under the vehicle manufacturer's recommended lifting point. (See vehicle manufacturer's owner's manual for location of frame lifting point.)
- Before raising the vehicle, double check and verify the saddle is centered and also has full contact with the lifting point.

- Secure the assembled Pump Handle in place inside the Handle Socket.
- To lift the vehicle, pump the Handle of the Jack. Use smooth, full strokes.
- Once the vehicle is raised, slide a jack stand of appropriate capacity (not included) under a proper lifting point referred in the vehicle owner's manual. Always use two jack stands, position them at the same point on each side of the vehicle.

⚠ WARNING

The rated capacity of jack stands is per pair, not the individual capacities combined unless specifically noted on the product by the jack stand manufacturer. Do not exceed rated jack stand capacity. Ensure that the vehicle support points are fully seated in the saddle of both jack stands. Use a matched pair of jack stands per vehicle to support one end only. Failure to do so may result in the load suddenly falling, which may cause personal serious injury and/or property damage.

- Center the vehicle's lifting point(s) on the saddle of the jack stand(s). Set the jack stand(s) to the same height according to the manufacturer's instructions, making sure that they lock securely into position.
- Turn the assembled Pump Handle counterclockwise to lower the vehicle onto the saddle(s) of the jack stand(s). Then turn the assembled Pump Handle firmly clockwise to close it.

LOWERING:

- Carefully remove all tools, parts, etc. from under the vehicle.
- Position the jack's Saddle under the lifting point. Turn the Pump Handle firmly clockwise to close the Release Valve, and raise load high enough to clear the jack stands, then carefully remove jack stands.
- Slowly turn the Pump Handle counterclockwise to lower the vehicle onto the ground.
- Lower the Jack completely. Then store in a safe, dry location out of reach of children.

NOTE: when the jack not in use, ALWAYS leave the saddle and lifting arm fully retracted.

MAINTENANCE AND SERVICING



Procedures not specifically explained in this manual must be performed only by a qualified technician.

⚠ WARNING

TO PREVENT SERIOUS INJURY FROM TOOL FAILURE: Do not use damaged equipment. If abnormal noise or vibration occurs, have the problem corrected before further use.

Cleaning, Maintenance, and Lubrication

Inspection

Before each use, inspect the general condition of the Jack. Check for broken, cracked, or bent parts, loose or missing parts, and any condition that may affect the proper operation of the product. If a problem occurs, have the problem corrected before further use. Do not use damaged equipment.

Cleaning

If the moving parts of the equipment are obstructed, use cleaning solvent or other good degreaser to clean the equipment. Remove any existing rust with a penetrating lubricant.

Lubrication

This equipment will not operate safely without proper lubrication. Using the equipment without proper lubrication will result in poor performance and damage to the equipment. Some parts in this equipment are not self-lubricating. Inspect the equipment before use and lubricate when necessary. After cleaning, lubricate the equipment using light penetrating oil, lubricating spray.

- Use a good lubricant on all moving parts.
- For light duty use, lubricate every six months.
- For heavy and constant use, monthly lubrication is recommended.
- **NEVER USE SANDPAPER OR ABRASIVE MATERIAL ON THESE SURFACES!**

Rust Prevention

Check the ram and pump plunger on the hydraulic unit every two months (or sooner, based on usage) for any signs of rust or corrosion. Lift the jack as high as it goes, and look under and behind the lifting arm. If signs of rust are visible, clean as needed and wipe down with an oily cloth. When storing the jack, always have the saddle and pump plunger in the down position.

Storing the Jack

- Lower the Lifting Arm.
- Store in a dry location, recommended indoors.

Note: If the jack is stored outdoors, be sure to lubricate all parts before and after use to ensure the jack stays in good working condition. Always store jack in the fully retracted position when stored in outdoor or caustic environment that can cause corrosion and/or rust.

Add the hydraulic oil

- Position the jack on level ground and lower the saddle.
- Use a Phillips head screwdriver to remove the two screws on both sides to remove the Cover Plate, then use a flat screwdriver to remove Oil Fill Screw simultaneously.
- Add high grade hydraulic fluid into the Oil Fill Hole slowly until the oil reaches the top of the Oil Fill Hole.
- Reinstall Oil Fill Screw.
- Reinstall Cover Plate and perform the Air Purge Procedure (please refer to **SYSTEM AIR PURGE.**)

Change the hydraulic oil

- Change the hydraulic oil at least once every three years.
- With the jack fully lowered, Use a Phillips head screwdriver to remove the two screws on both sides to remove the Cover Plate, then use a flat screwdriver to remove Oil Fill Screw simultaneously.
- Tip the jack to allow the old hydraulic oil to drain out of the Housing completely, and dispose of the old hydraulic oil in accordance with local regulations.
- With the jack upright, completely fill the Housing with a high quality hydraulic oil (not included) until the oil reaches the top of the Oil Fill Hole.
- Open the Release Valve by turning the Pump Handle counterclockwise and pump the Handle to purge air from the system. (please refer to **SYSTEM AIR PURGE.**)
- Recheck oil level and re-fill as needed.
- Reinstall the Oil Fill Screw and Cover Plate.
- Wipe dry with a clean cloth. Then, store the jack in a safe, dry location out of reach of children and other non-authorized people.

Trouble shooting

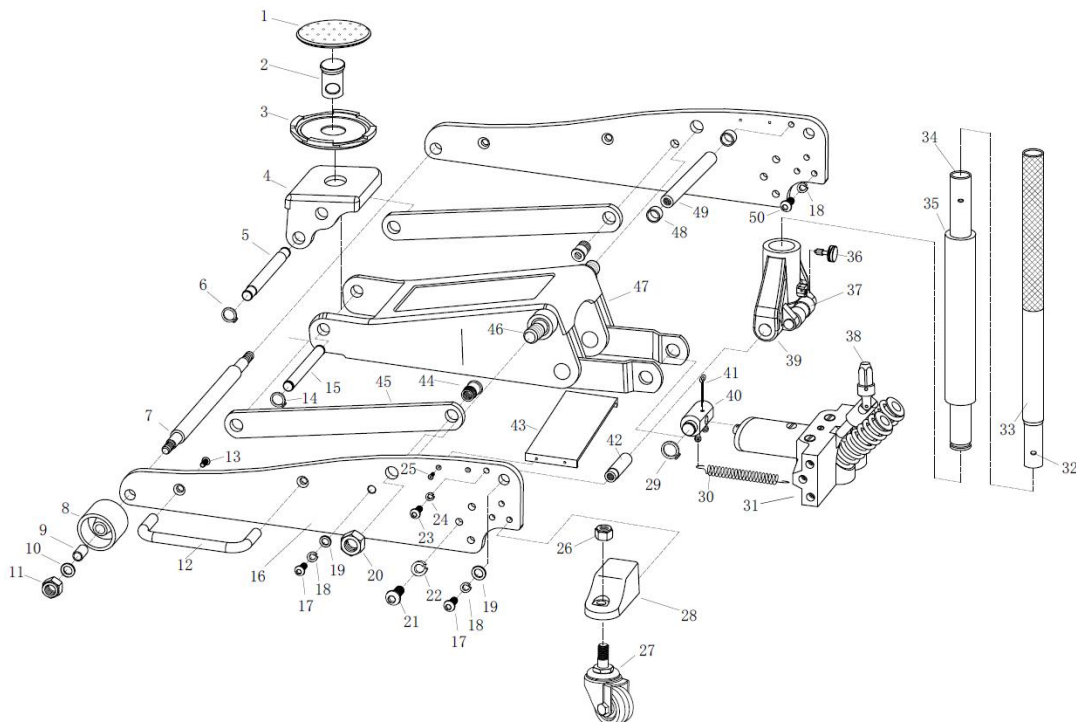
⚠ WARNING

TO PREVENT SERIOUS INJURY:

Use caution when troubleshooting a malfunctioning jack. Stay well clear of the supported load. Completely resolve all problems before use. If the solutions presented in the Troubleshooting guide do not solve the problem, have a qualified technician inspect and repair the jack before use. After the jack is repaired, test it carefully without a load by raising and lowering it fully.

POSSIBLE SYMPTOMS						PROBABLE SOLUTION (Make certain that the jack is not supporting a load while attempting a solution.)
Jack will not lift at its weight capacity	Saddle lowers under load	Pump stroke feels spongy	Saddle will not lift all the way	Handle moves up when jack is under load	Oil leaking from filler plug	
X	X					Check that Release Valve is fully closed. Bleed air from the system.
X	X			X		Valves may be blocked and may not close fully. To flush the valves: 1. Lower the Saddle and securely close the Release Valve. 2. Manually lift the saddle several inches. 3. Open the release valve and force the saddle down as quickly as possible.
X		X	X			Jack may be low on oil. Check the oil level and refill if needed. Jack may require bleeding -Please refer to SYSTEM AIR PURGE.
					X	Unit may have too much hydraulic oil inside, check fluid level and adjust if needed.

PARTS LIST AND ASSEMBLY DIAGRAM



Item No.	Description	Qty	Item No.	Description	Qty
1	Rubber Saddle Pad	1	26	Nut M10	2
2	Saddle Bolt	1	27	Rear Caster Assembly	2
3	Saddle	1	28	Rear Caster Rack	2
4	Saddle Base	1	29	Retaining Ring M19	2
5	Radius Link Bolt	1	30	Return Spring	2
6	Retaining Ring M13	2	31	Hydraulic Unit	1
7	Front Wheel Axle	1	32	Handle Button	1
8	Front Wheel	2	33	Upper Handle	1
9	Front Wheel Sleeve	2	34	Lower Handle	1
10	Front Wheel Washer	2	35	Handle Bumper	1
11	Screw M12	2	36	Handle Set Screw	1
12	Carry Handle	1	37	Roller	1
13	Screw M6*20	2	38	U-Joint	1
14	Retaining Ring M14	2	39	Handle Yoke	1
15	Saddle Base Bolt	1	40	Link Block	1
16	Side Plate	2	41	Split Pin	1
17	Screw M8*16	4	42	Handle Yoke Axle	2
18	Lock Washer M8	10	43	Cover Plate	1
19	Washer M8	4	44	Radius Link Screw	2
20	Nut M16	2	45	Radius Linkage	2
21	Screw M10*25	6	46	Lift Arm Shaft	1
22	Washer M10	6	47	Lift Arm Assembly	1
23	Screw M6*20	2	48	Rod Guard	2
24	Washer M6	2	49	Rod	1
25	Screw M5*12	4	50	Screw M8*20	6

⚠ WARNING

THE MANUFACTURER AND/OR DISTRIBUTOR HAS PROVIDED THE PARTS DIAGRAM IN THIS MANUAL AS A REFERENCE TOOL ONLY.

NEITHER THE MANUFACTURER NOR DISTRIBUTOR MAKES ANY REPRESENTATION OR WARRANTY OF ANY KIND TO THE BUYER THAT HE OR SHE IS QUALIFIED TO MAKE ANY REPAIRS TO THE PRODUCT OR THAT HE OR SHE IS QUALIFIED TO REPLACE ANY PARTS OF THE PRODUCT.

IN FACT, THE MANUFACTURER AND/OR DISTRIBUTOR EXPRESSLY STATES THAT ALL REPAIRS AND PARTS REPLACEMENTS SHOULD BE UNDERTAKEN BY CERTIFIED AND LICENSED TECHNICIANS AND NOT BY THE BUYER. THE BUYER ASSUMES ALL RISK AND LIABILITY ARISING OUT OF HIS OR HER REPAIRS TO THE ORIGINAL PRODUCT OR REPLACEMENT PARTS THERETO, OR ARISING OUT OF HIS OR HER INSTALLATION OF REPLACEMENT PARTS THERETO.

3-YEAR LIMITED WARRANTY

Tractor Supply Company, makes every effort to assure that its products meet high quality and durability standards, and warrants to the original purchaser that this product is free from defects in materials or workmanship for the period of 3-year limited from the date of purchase through normal use.

This warranty does not apply to damage due directly or indirectly, to misuse, abuse of the product, improper installation, or to lack of maintenance.

Some states do not allow the exclusion or limitation of incidental or consequential damages, so the above limitation of exclusion may not apply to you.

THIS WARRANTY IS EXPRESSLY IN LIEU OF ALL OTHER WARRANTIES, EXPRESS OR IMPLIED, INCLUDING THE WARRANTIES OF MERCHANTABILITY AND FITNESS.

In order to obtain this service, you should contact ACS(American Customer Service), please call 1-888-376-9601.

This warranty gives you specific legal rights and you may also have other rights which vary from state to state.

Distributed by:

TRACTOR SUPPLY COMPANY

5401 VIRGINIA WAY BRENTWOOD, TN 37027

For customer support

Call: 1-888-376-9601

www.TractorSupply.com

MADE IN THAILAND