

## Tips for Healthier, Better Performing Cattle

1. Provide a stress-free environment for your animals. Stress makes any living creature more susceptible to disease, and beef cattle are no exception. So take the time to always interact with your cattle in a calm and low-stress fashion.
2. Monitor your animal's feed consumption. Decreased appetite is an early sign of sickness. Healthy cattle come up to the feed trough at every meal to eat. Healthy beef cattle have full and rounded stomachs.
3. Keep an eye out for changes in vital signs. For mature cattle, the normal temperature range is 100.4–103.1 degrees Fahrenheit, the pulse is 40–80 beats per minute, and the respiration rate at rest is 10–30 breaths per minute.
4. Create a vaccination schedule for your cattle and follow it. Implement an immunization schedule for respiratory and clostridial diseases. If you have breeding animals, you also want to have a reproductive vaccination program. Many fairly priced and highly effective vaccines are on the market.
5. Develop a good working relationship with your veterinarian. Your vet can be a great adviser as you strive to keep your herd of beef cattle in tip-top shape.
6. Earn the animal's trust. A show calf needs to trust you, and trust comes in the form of working with the animal daily. It may be a long, slow process, but it's one that's essential to form a partnership with your project animal.



### Every day, Elk Grove Milling strives for one goal...

The Health, Wellness and Happiness of your animals. Owner, Bob Lent and his staff are on the cutting edge of the feed industry, developing innovations in the pelleting world. Producing complete animal feeds since 1982, Stable Mix™ and other Elk Grove Milling feed products have become recommended standards of the industry, recommended by farriers, veterinarians, and friends alike.

Elk Grove Milling's mission is to manufacture and distribute high-quality feeds that provide 100% of your animals' daily requirement for vitamins and minerals in a convenient pelleted feed that they will love.

For more information visit us at:

[www.elkgrovemilling.com](http://www.elkgrovemilling.com)

 [stablemix](https://www.facebook.com/stablemix)

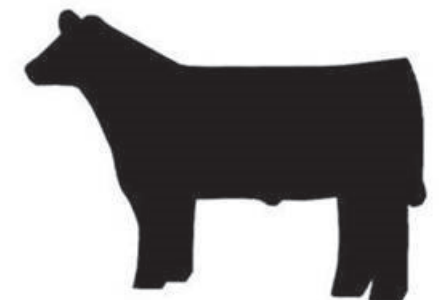
 [@stablegrove](https://twitter.com/stablegrove)

FORMULATED WITH  
**Altech**<sup>®</sup>  
SOLUTIONS



## Elk Grove Milling

# Beef Mix™



## Feeding Cattle

Designed to maximize growth and weight gain, Beef Mix™ is a complete feed that helps to improve body score and condition in beef cattle. Unlike hay, Beef Mix™ comes with all necessary vitamins and minerals to insure all of your cattle get their daily nutritional needs.

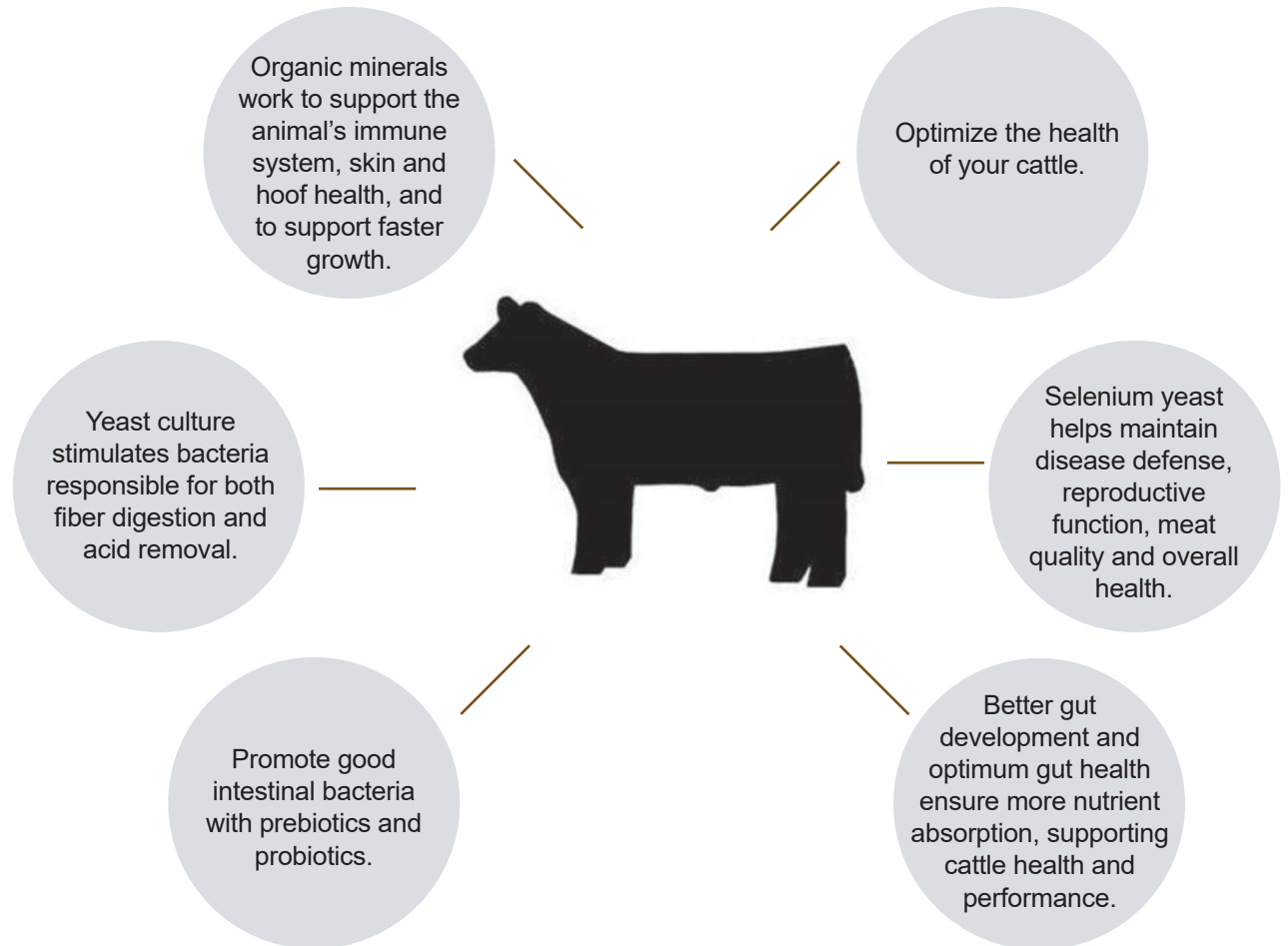
Feed 2 to 2.5 lbs per 100 lbs of the animal's weight per day.

## Beef Mix™

Properly feeding your cattle gives them the nutrition they need in order to grow and perform. Your feed should focus on optimizing cattle health. Our Elk Grove Milling Beef Mix™ is specially formulated with premier ingredients to support your cattle's health and help them reach their natural potential.



# For Healthier, Better Performing Cattle



**Elk Grove Milling beef mix are antibiotic-free and are made in antibiotic-free facilities.**

FORMULATED WITH  
**Altech®**  
SOLUTIONS