



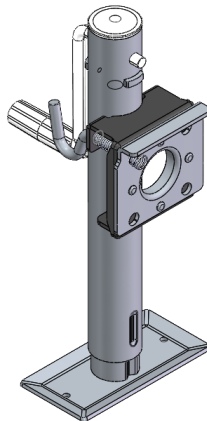
**TRV 2000 LB TW SWIVEL
TRAILER JACK**

6039133



**TRV 2000 LB SW WELD ON SWIVEL
TRAILER JACK**

6039142



WARNING:

Read, Understand, Follow and Save These Instructions.

Failure to follow all warnings and instructions may result in product failure, property damage, serious personal injury.

The warnings, cautions and instructions discussed in this instruction manual cannot cover all possible conditions or situations that could occur. It must be understood by the operator that common sense and caution are factors which cannot be built into this product, but must be supplied by the operator.

Basic Safety Information

Keep work area clean and well lit. *Cluttered or dark areas invite accidents.*

Personal Safety

1. **Stay alert, watch what you are doing and use common sense when operating a tool. Do not use a tool while you are tired or under the influence of drugs, alcohol or medication. A moment of inattention while operating tools may result in serious personal injury.**
2. **Use personal protective equipment. Always wear eye protection. Safety equipment such as non-skid safety shoes or a hard hat used for appropriate conditions will reduce personal injuries.**

Service

Have your tool serviced by a qualified repair person using only identical replacement parts. This will ensure that the safety of the tool is maintained.

Specific Safety Warnings

1. Mounting bracket must be attached by certified welder.
2. Do not exceed rated capacity.
3. **Be aware that the user/installer of this product is solely responsible for the way the Trailer Jack is installed, operated and maintained, and is responsible for any and all consequences that occur, whether or not anticipated in these warning statements.**
4. **WELDING IS REQUIRED TO SECURELY AND PERMANENTLY ATTACH THE JACK TO THE TRAILER TONGUE. ONLY A QUALIFIED, CERTIFIED WELDER SHOULD DO THE WELDING.** A poor weld may cause the trailer to fall suddenly, potentially causing serious personal and/or property damage.
5. **DO NOT EXCEED THE MAXIMUM LIFT CAPACITY (2,000 POUNDS) FOR THE JACK.** Overloading the Jack could cause personal injury and/or property damage. **Be aware of dynamic loading!** A sudden drop of the Jack (with load attached) may create for a brief instant, an excess load, which may result in damage to the product and/or personal injury.
6. **DO NOT USE THE JACK ON ANY SOFT GROUND SURFACE.** Make sure the Jack is used on a dry, hard, ground surface capable of supporting the weight of the Jack, the trailer, contents being lifted, and any additional tools and equipment. Do not use on asphalt, which may soften in hot weather.
7. **ALWAYS KEEP HANDS, FINGERS, ARMS, AND FEET OUT FROM UNDER THE TRAILER TONGUE WHEN APPLYING OR RELEASING A LOAD.** Remain clear of the trailer when raising or lowering. People and animals should be kept at a safe distance when using the Jack.
8. **USE EXTREME CAUTION WHEN APPLYING OR RELEASING A LOAD.** Never allow the load to suddenly release. Slowly and carefully apply and release the load.
9. **NEVER LIFT A TRAILER WITH ANYONE ON IT.** Do not allow others in the lift area while operating the Jack.

Specifications

SKU	6039133
Weight Capacity	2000 lb.
Travel Length	10"
Lift Range	11" – 21"
Handle Operation	Top Wind

SKU	6039142
Weight Capacity	2000 lb.
Travel Length	10"
Lift Range	11" – 21"
Handle Operation	Side Wind

Assembly

⚠️WARNING

TO PREVENT SERIOUS INJURY AND DEATH FROM TRAILER JACK DETACHMENT OR FAILURE:
All welding must be performed by an AWS certified welder to meet all applicable safety regulations by DOT, NHTSA, and all other governmental and standards agencies.

Note: The Trailer Jack requires no assembly, but care must be taken to properly mount the Trailer Jack to the trailer. Trailer Jack must be welded to side of straight trailer tongue. Once welded to the trailer, the Trailer Jack is an effective aid to hitching, unhitching, leveling and moving the trailer. The Trailer Jack can be used on farm duty trailers as well as recreational boat trailers.

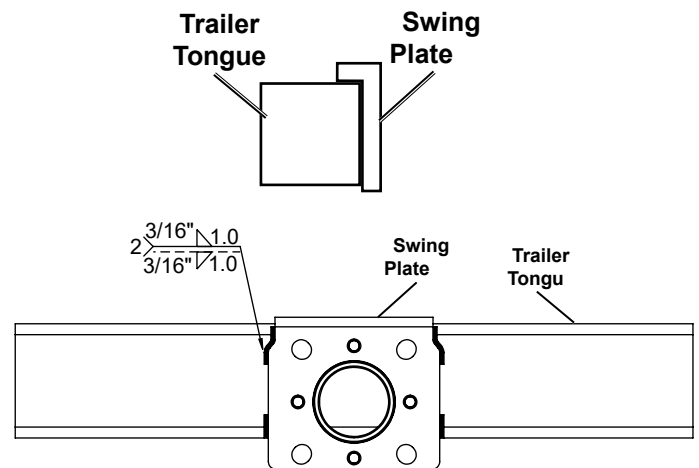
Note: The Trailer Jack is designed for permanent attachment to the trailer tongue, and can be available for use wherever the trailer goes.

WARNING! TO PREVENT SERIOUS INJURY: To prevent injury, securely weld the Swing Plate to the side of the trailer's tongue with the lip of the Swing Plate above the tongue for added support.

WARNING! TO PREVENT SERIOUS INJURY: To ensure safe operation, welding of the Swing Plate to the trailer tongue must only be done by a certified welder in a safe location, away from all flammable materials.

1. Plan the location of the Trailer Jack.
2. Examine both sides of the trailer tongue and choose the appropriate location for the Jack, keeping in mind the mounting method, and the need to crank the Handle .
3. The Trailer Jack is designed to be welded to either side of the trailer tongue, and will swing back in either direction (forward or to the rear). Leave adequate room at both sides of the trailer frame so as to allow horizontal positioning of the Jack, in either forward or rearward position.

4. Before installing the Trailer Jack, properly support the tongue of the trailer so that it is high enough off the ground to provide clearance for the Jack. Take precautions to ensure the wheels of the trailer are chocked and will not roll.
5. Remove Retaining Ring and detach the Swing Plate. Carefully remove the paint from Plate edges. Position lip of the Plate over top of the trailer tongue and commence welding, weld in 4 locations total, 2x1" welds on each side as shown. Use 3/16" fillet welds.



6. After welding, welds must be properly cleaned and painted or otherwise protected from corrosion and deterioration.
7. Once the Swing Plate is properly welded to the trailer tongue, attach the Jack to the Plate and secure in place with the Retaining Ring. Test the Trailer Jack to make sure it functions correctly.
8. Crank the Handle both ways to make sure the Trailer Jack extends and retracts properly.
9. Pull out the Pull Pin Ring and swing the Trailer Jack upward to horizontal position. Make sure the Pull Pin engages into the Swing Plate and locks the Trailer Jack in this upward position.
10. After you have tested the Trailer Jack and are confident of its proper operation, the Trailer Jack is ready for use.

Operation Instructions

Mount and dismount Trailer only on smooth, level surfaces.

Mounting The Trailer To The Towing Vehicle.

1. Before mounting, chock the trailer wheels to prevent the trailer from rolling.
2. Crank the Handle counterclockwise to extend the leg to the desired height.
3. Maneuver the vehicle so that the trailer's hitch is directly over the towing vehicle's hitch ball.
4. Rotate the Handle clockwise to retract the Trailer Jack, and lower the tongue hitch onto the hitch ball.
5. Tighten the hitch retainer mechanism.
6. Continue turning the Handle until the leg is fully retracted.
7. Pull out the Pull Pin and rotate the Trailer Jack to its horizontal position. Make sure that it locks into the Swing Plate.
8. The Handle should also be swung over and positioned to rest on top of the trailer tongue.
9. Before towing, always swing the Trailer Jack to its horizontal position (foot facing rearward). Always keep feet and hands clear of the hitch, the tongue and the area underneath.

Removing The Trailer From The Towing Vehicle

Take the necessary precautions against uncontrolled trailer movement (use wheel chocks), before loosening the trailer hitching mechanism. Turn the Handle counterclockwise to raise the tongue of the trailer from the hitch ball. Keep hands and feet clear of the hitch, tongue and the area underneath the tongue.

Leveling and Moving

1. In the unhitched mode, the trailer can be leveled front to back by turning the Handle either clockwise or counterclockwise.
2. If the trailer is to be stored in this mode, it is advised that the trailer wheels be properly chocked.

Towing

While the trailer is being towed, the Trailer Jack must be pivoted into the horizontal position with the foot facing rearward.

NOTICE: TO PREVENT PROPERTY DAMAGE:

Before driving the vehicle and trailer to your destination, always use safety chains to secure the trailer to the towing vehicle.

INSPECTION, MAINTENANCE, AND CLEANING



Procedures not specifically explained in this manual must be performed only by a qualified technician.

WARNING

TO PREVENT SERIOUS INJURY:

Remove load from Trailer Jack, park towing vehicle and trailer on flat, level surface, and chock tires before performing any inspection, maintenance, or cleaning procedures.

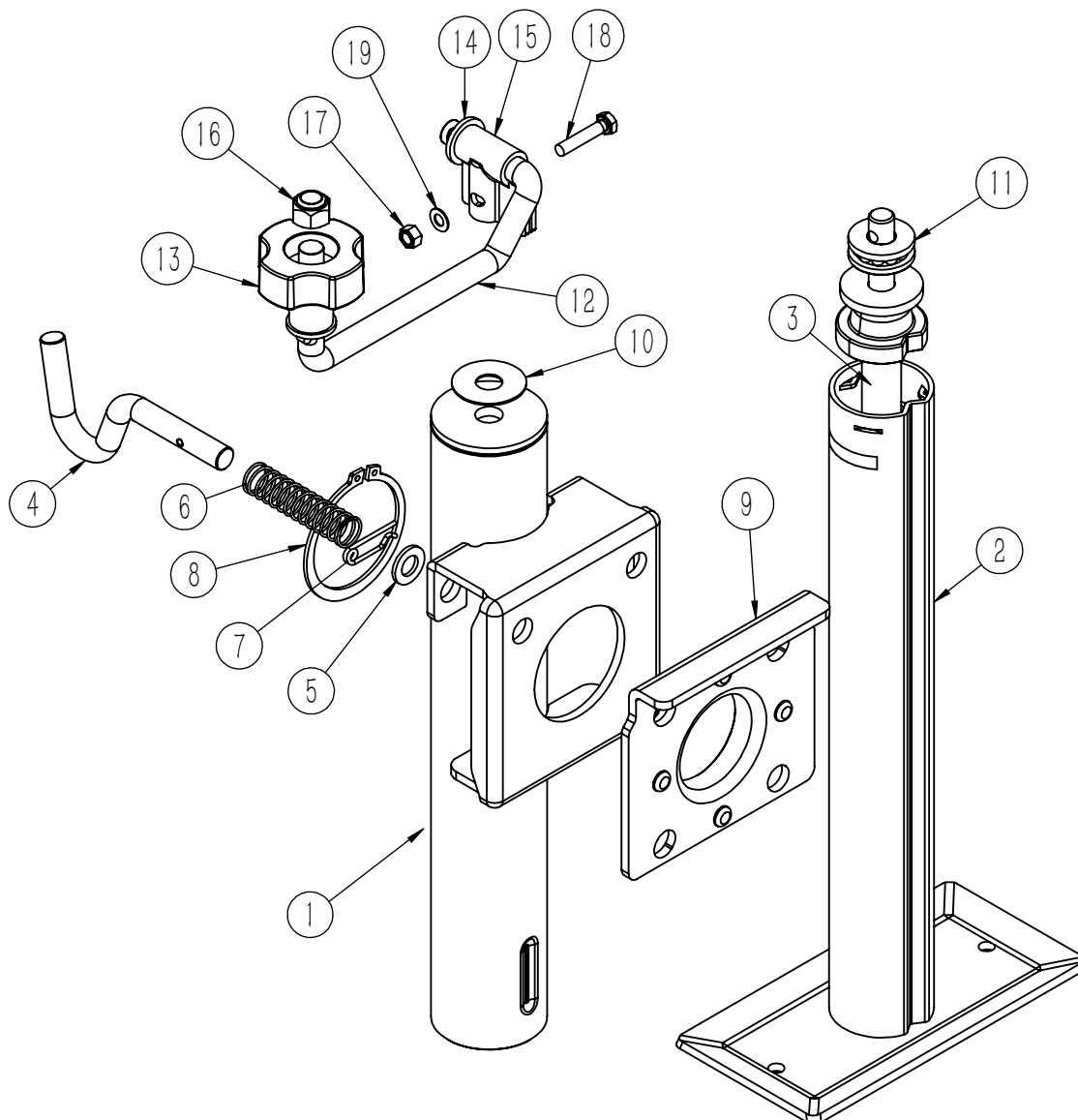
TO PREVENT SERIOUS INJURY FROM TOOL FAILURE:

Do not use damaged equipment. If abnormal noise or vibration occurs, have the problem corrected before further use.

1. **BEFORE EACH USE**, inspect the general condition of the Jack. Check for loose screws, misalignment or binding of moving parts, cracked, bent, or broken parts and any other condition that may affect its safe operation. Check the Round Jack Mount regularly to assure the welds remain solid. Inspect the entire unit for corrosion that may be caused by exposure to salt water or weather. If abnormal noise or vibration occurs, have the problem corrected before further use. **Do not use damaged equipment.**
2. **IF THE JACK HAS BEEN USED IN SALT WATER**, rinse the entire unit thoroughly with fresh water. Then, use a premium quality, lightweight oil to lubricate all moving parts.
3. **KEEP ALL PARTS LIGHTLY LUBRICATED TO PREVENT CORROSION.** If corrosion develops, you may paint exterior parts of the Jack to arrest and prevent further damage.

Parts List and Assembly Diagram - 6039133

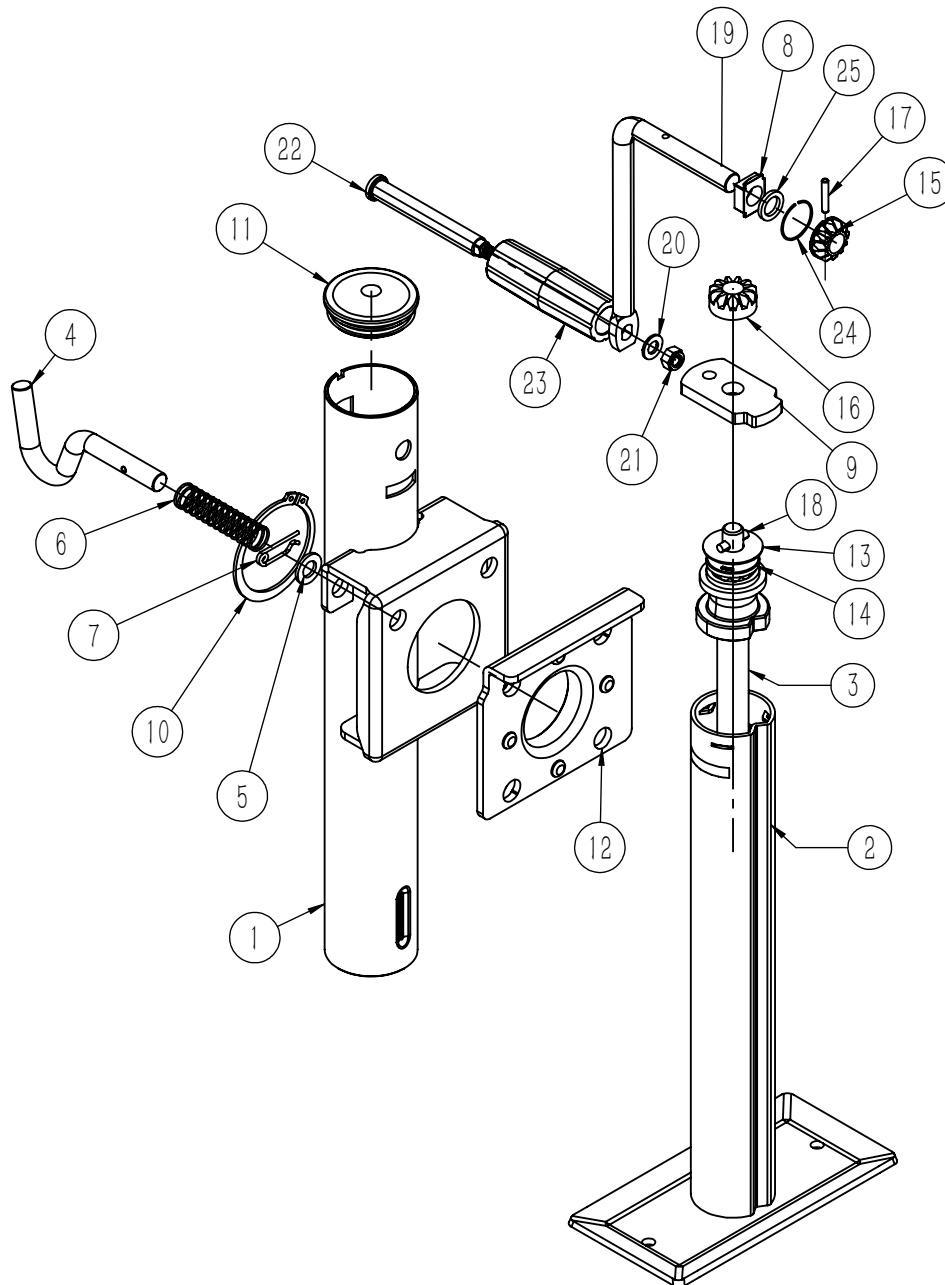
Part	Description	Qty
1	Outer Tube	1
2	Inner Tube	1
3	Screw Rod	1
4	L - Pin	1
5	M10 Washer	1
6	Spring	1
7	R - Ring	2
8	Snap Ring	1
9	L Plate	1
10	$\phi 13-\phi 36-1$ Washer	1
11	Bearing	1
12	Handle	1
13	Plastic handwheel	1
14	M12- $\phi 24-2.5$ Washer	2
15	Handle screw mounting bracket	1
16	M12 Nut	1
17	M6 Nut	1
18	M6 \times 30 Bolt	1
19	M6 Washer	1



Parts List and Assembly Diagram - 6039142

Part	Description	Qty
1	Outer Tube	1
2	Inner Tube	1
3	Screw Rod	1
4	L - Pin	1
5	M10 Washer	1
6	Spring	1
7	R - Pin	1
8	Crank Handle Stop	1
9	Limit plate	1
10	Snap Ring	1
11	Cap	1
12	L Plate	1
13	36-13-1 Washer	1

Part	Description	Qty
14	Bearing	1
15	Drive Gear	1
16	Driven Gear	1
17	φ4*23 Pin	1
18	φ5*22 Pin	1
19	Handle	1
20	M8 Washer	1
21	M8 Nut	1
22	φ12 Bolt	1
23	Plastic Handle Grip	1
24	φ14*88.8 Ring	1
25	φ12.8*19*2.5 Ring	1



Distributed by:

TRACTOR SUPPLY COMPANY

5401 VIRGINIA WAY

BRENTWOOD, TN 37027

For customer support,

call: 1-888-376-9601

www.TractorSupply.com

MADE IN VIETNAM