



## TRV 5000 LB A FRAME TRAILER JACK

**6039129**



## TRV 2000 LB A FRAME TRAILER JACK

**6039131**



### **WARNING:**

**Read, Understand, Follow and Save These Instructions.**

Failure to follow all warnings and instructions may result in product failure, property damage, serious personal injury.

The warnings, cautions and instructions discussed in this instruction manual cannot cover all possible conditions or situations that could occur. It must be understood by the operator that common sense and caution are factors which cannot be built into this product, but must be supplied by the operator.

# Basic Safety Information

---

Keep work area clean and well lit. *Cluttered or dark areas invite accidents.*

## Personal Safety

---

1. **Stay alert, watch what you are doing and use common sense when operating a tool. Do not use a tool while you are tired or under the influence of drugs, alcohol or medication. A moment of inattention while operating tools may result in serious personal injury.**
2. **Use personal protective equipment. Always wear eye protection. Safety equipment such as non-skid safety shoes or a hard hat used for appropriate conditions will reduce personal injuries.**

## Service

---

**Have your tool serviced by a qualified repair person using only identical replacement parts. This will ensure that the safety of the tool is maintained.**

## Specific Safety Warnings

---

1. Trailer tongue weight (TW) is the downward pressure that the trailer coupler places on the hitch ball. Usually, TW is about 10% of the Gross Trailer Weight (GTW); GTW is the weight of the trailer when fully loaded. Only use a Trailer Jack that has a capacity that matches or exceeds the trailer tongue weight (TW).
2. **DO NOT EXCEED THE MAXIMUM LIFT CAPACITY (5,000 lbs - 6039129; 2,000 lbs - 6039131) FOR THE JACK. Overloading the Jack could cause personal injury and/or property damage.**  
**Be aware of dynamic loading! A sudden drop of the Jack (with load attached) may create for a brief instant, an excess load, which may result in damage to the product and/or personal injury.**
3. This Trailer Jack is designed to be mounted on the trailer tongue, through the hole opening behind the trailer coupler. The Outer Tube diameter must match the existing hole size. This Trailer Jack is for use on travel trailers and boat trailers.
4. **DO NOT USE THE JACK ON ANY SOFT GROUND SURFACE.** Make sure the Jack is used on a dry, hard, ground surface capable of supporting the weight of the Jack, the trailer, contents being lifted, and any additional tools and equipment. Do not use on asphalt, which may soften in hot weather.
5. **ALWAYS KEEP HANDS, FINGERS, ARMS, AND FEET OUT FROM UNDER THE TRAILER TONGUE WHEN APPLYING OR RELEASING A LOAD.** Remain clear of the trailer when raising or lowering. People and animals should be kept at a safe distance when using the Jack.
6. **USE EXTREME CAUTION WHEN APPLYING OR RELEASING A LOAD.** Never allow the load to suddenly release. Slowly and carefully apply and release the load.
7. **NEVER LIFT A TRAILER WITH ANYONE ON IT.** Do not allow others in the lift area while operating the Jack.

Use of the Trailer Jack for applications other than those intended could result in serious personal injury and property damage. The Trailer Jack is not for aircraft applications.

## Specifications

---

SKU	6039129
Weight Capacity	5000 lb.
Travel Length	15"
Lift Range	10" – 25"
Handle Operation	Top Wind

SKU	6039131
Weight Capacity	2000 lb.
Travel Length	15"
Lift Range	8.5" – 23.5"
Handle Operation	Top Wind

---

## Setting up the Trailer Jack

1. Chock wheels of trailer and support the trailer tongue so that trailer is stable during mounting of the Trailer Jack.
2. Remove the existing trailer jack (if necessary).
3. Slide the lower portion of Outer Tube (1) into, and through the hole opening in the trailer tongue (see photo below).



4. Align the bolt holes in the Mounting Plate to match hole openings in the trailer tongue.
5. Attach Mounting Plate to trailer tongue using bolts (grade 5 or better), washers and lock nuts (hardware is not included). A washer should be on each bolt and bolts should be inserted from the top side. Underneath, a washer should be added to each bolt and secured in place with a lock nut.
6. With assembly complete, test the Trailer Jack. Crank the Handle clockwise to retract the Inner Tube. Crank Handle counterclockwise to extend the Inner Tube.

## Using the Trailer Jack

### To mount trailer to tow vehicle:

1. Chock the wheels of the trailer to prevent any trailer movement.
2. Rotate the Handle clockwise to raise the trailer tongue to a level slightly above the tow vehicle's hitch. Move tow vehicle so that the trailer's hitch is directly over the tow vehicle's hitch ball.
3. Turn the Handle counterclockwise to lower the tongue hitch onto the vehicle's hitch ball. Secure the trailer with the hitch retainer.

4. Keep turning the Handle counterclockwise to fully retract the Trailer Jack.
5. Always attach safety chains and electrical connections between the tow vehicle and the trailer.

### To dismantle trailer to tow vehicle:

1. Chock wheels of trailer.
2. Turn the handle clockwise to extend the Trailer Jack to touch the ground. Then further extend the Trailer Jack slightly so that the weight of trailer tongue is supported by the Trailer Jack; this will make it easier to disconnect the tongue hitch.
3. Disconnect safety chains and any electrical wiring connecting the trailer to the tow vehicle.
4. If needed, raise the Trailer Jack slightly so the trailer tongue hitch completely clears the hitch ball, and disconnect the trailer.

### Caring for the Trailer Jack:

Frequently check to make sure all hardware is tight.

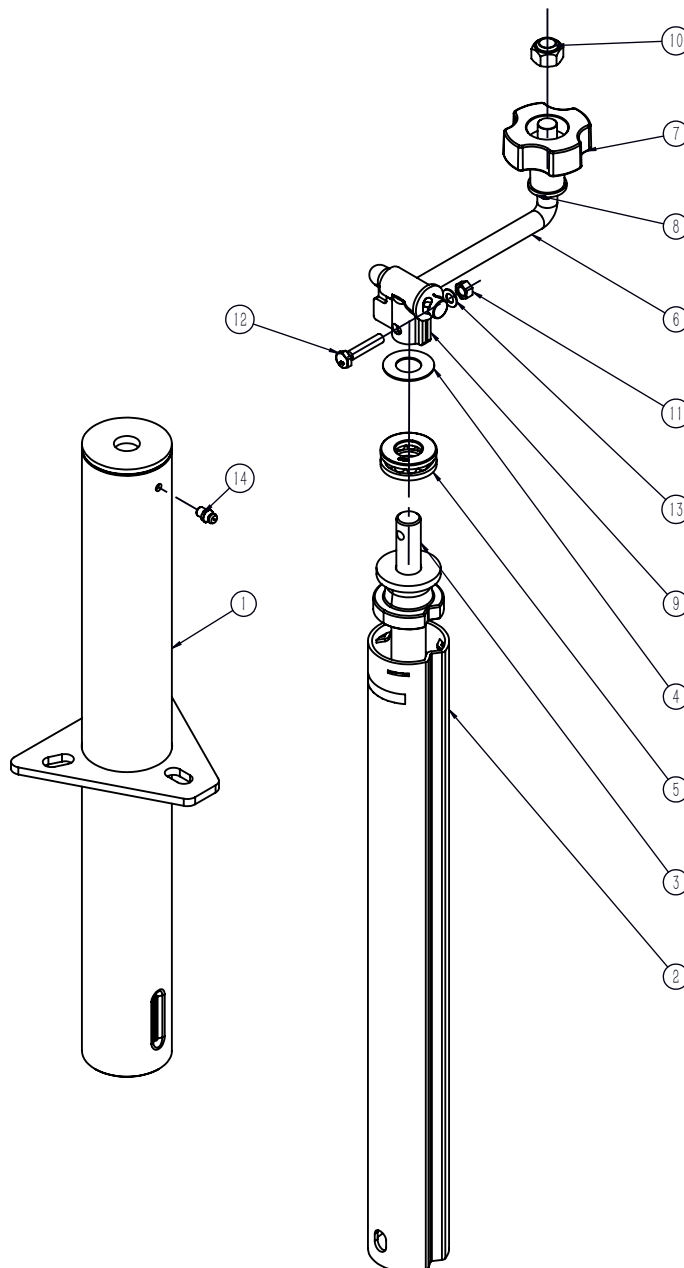
Inspect the Trailer Jack periodically for cracked or broken components.

Do not continue to use the Trailer Jack if damage is noted.

Frequently check the Pulling Handle and related springs and retaining rings; check to make sure that Lock Handle engages properly and that it will properly lock the Trailer Jack in the up and down position. Grease all moving components.

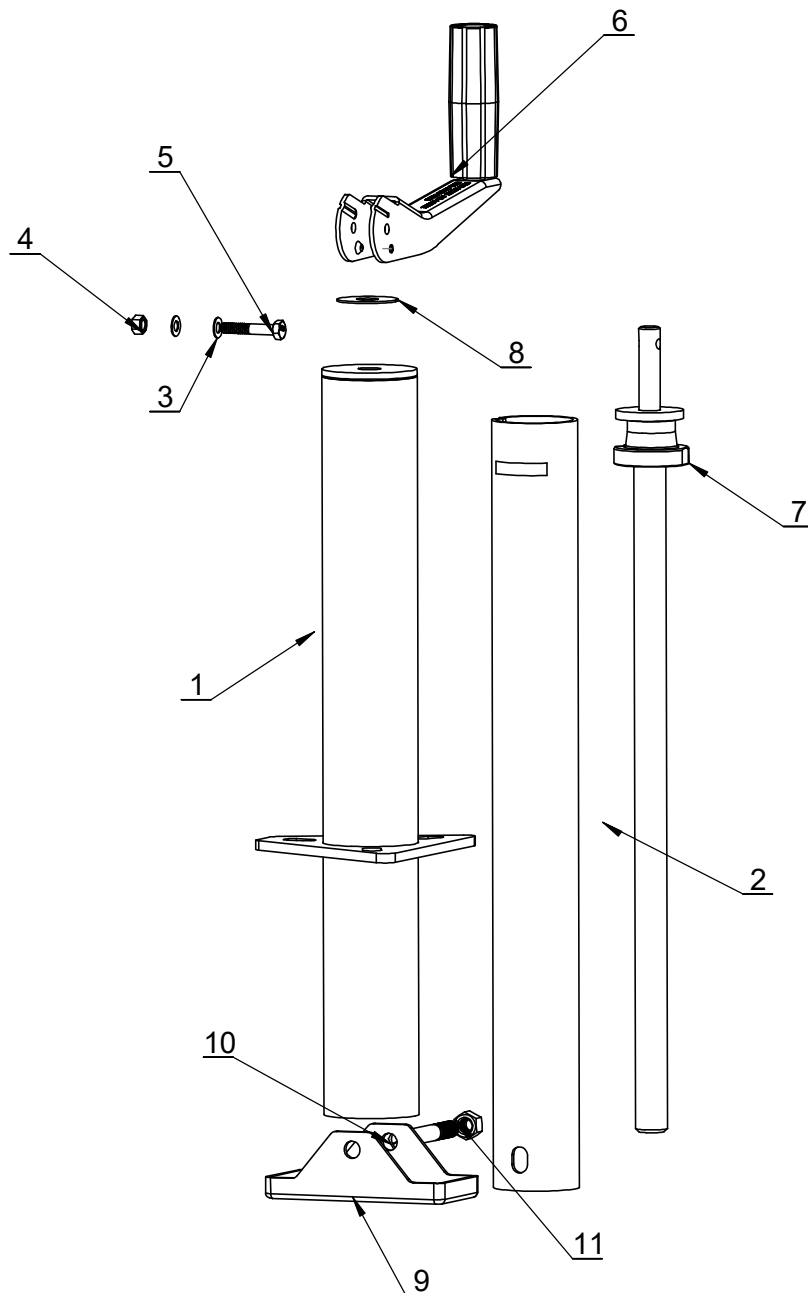
# Parts List and Assembly Diagram - 6039129

Part	Description	Qty
1	Outer Tube	1
2	Inner Tube	1
3	Screw Rod	1
4	Washer	1
5	Bearing	1
6	Handle	1
7	Plastic Handwheel	1
8	M12- $\phi$ 24-2.5 Washer	2
9	Handle Bracket	1
10	M12 Nut	1
11	M6 Nut	1
12	M6 $\times$ 30 Bolt	1
13	M6- $\phi$ 12-T0.7 Flat Washer	1
14	Grease Fitting	1



# Parts List and Assembly Diagram - 6039131

Part	Description	Qty
1	Outer Tube	1
2	Inner Tube	1
3	M6 Washer	2
4	M6 Nut	1
5	M6×35 Bolt	1
6	Handle	1
7	Bearing	1
8	φ13-φ36-1 Washer	1
9	Base	1
10	Long Bolt	1
11	Nut	1



---

**Distributed by:**  
**TRACTOR SUPPLY COMPANY**  
**5401 VIRGINIA WAY**  
**BRENTWOOD, TN 37027**  
**For customer support,**  
**call: 1-888-376-9601**  
**[www.TractorSupply.com](http://www.TractorSupply.com)**  
**MADE IN VIETNAM**