



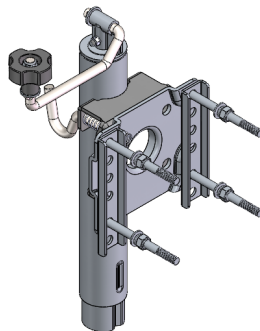
TRV TRAILER 1000 LB BOLT ON TRAILER JACK

6039130



TRV 2000 LB TW BOLT ON TRAILER JACK

6039134



WARNING:

Read, Understand, Follow and Save These Instructions.

Failure to follow all warnings and instructions may result in product failure, property damage, serious personal injury.

The warnings, cautions and instructions discussed in this instruction manual cannot cover all possible conditions or situations that could occur. It must be understood by the operator that common sense and caution are factors which cannot be built into this product, but must be supplied by the operator.

Basic Safety Information

Keep work area clean and well lit. *Cluttered or dark areas invite accidents.*

Personal Safety

1. **Stay alert, watch what you are doing and use common sense when operating a tool. Do not use a tool while you are tired or under the influence of drugs, alcohol or medication. A moment of inattention while operating tools may result in serious personal injury.**
2. **Use personal protective equipment. Always wear eye protection. Safety equipment such as non-skid safety shoes or a hard hat used for appropriate conditions will reduce personal injuries.**

Service

Have your tool serviced by a qualified repair person using only identical replacement parts. This will ensure that the safety of the tool is maintained.

Specific Safety Warnings

1. Trailer tongue weight (TW) is the downward pressure that the trailer coupler places on the hitch ball. Usually, TW is about 10% of the Gross Trailer Weight (GTW); GTW is the weight of the trailer when fully loaded. Only use a Trailer Jack that has a capacity that matches or exceeds the trailer tongue weight (TW).
2. **DO NOT EXCEED THE MAXIMUM LIFT CAPACITY (1,000 lbs - 6039130; 2,000 lbs - 6039134) FOR THE JACK. Overloading the Jack could cause personal injury and/or property damage.**
Be aware of dynamic loading! A sudden drop of the Jack (with load attached) may create for a brief instant, an excess load, which may result in damage to the product and/or personal injury.
3. The Trailer Jack is designed to be mounted to the trailer's tongue and is used when hitching and unhitching the trailer's hitch from the vehicle. With the attached wheel, this design allows for short distance positioning of the trailer. Use of the Trailer Jack for operations other than those intended could result in serious personal injury and property damage. The Trailer Jack is not for aircraft applications.
4. **DO NOT USE THE JACK ON ANY SOFT GROUND SURFACE.** Make sure the Jack is used on a dry, hard, ground surface capable of supporting the weight of the Jack, the trailer, contents being lifted, and any additional tools and equipment. Do not use on asphalt, which may soften in hot weather.
5. **ALWAYS KEEP HANDS, FINGERS, ARMS, AND FEET OUT FROM UNDER THE TRAILER TONGUE WHEN APPLYING OR RELEASING A LOAD.** Remain clear of the trailer when raising or lowering. People and animals should be kept at a safe distance when using the Jack.
6. **USE EXTREME CAUTION WHEN APPLYING OR RELEASING A LOAD.** Never allow the load to suddenly release. Slowly and carefully apply and release the load.
7. **NEVER LIFT A TRAILER WITH ANYONE ON IT.** Do not allow others in the lift area while operating the Jack.

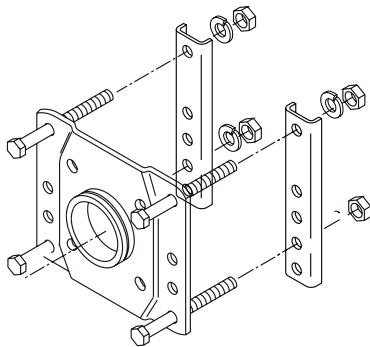
Specifications

SKU	6039130
Weight Capacity	1000 lb.
Travel Length	10"
Lift Range	12.5" – 22.5"
Handle Operation	Side Wind

SKU	6039134
Weight Capacity	2000 lb.
Travel Length	10"
Lift Range	11" – 21"
Handle Operation	Top Wind

Mounting the Trailer Jack

1. Plan carefully where the Trailer Jack is to be mounted. It is designed to mount to the side of the trailer tongue. The beam of the tongue must be rectangular or square. This Trailer Jack will fit up to 3" wide x 4" high Trailer tongues. Jack's Swivel Plate has various mounting configurations and can be mounted either vertically, or horizontally against the trailer tongue.
2. Do not attempt to modify the trailer tongue; making changes or drilling holes in the trailer tongue could result in failure of this component.
3. Never mount the Trailer Jack on a cylindrical trailer tongue. The Swivel Plate and Back Plates will only mount properly on a rectangular or square tongue beam.
4. When planning the location of the Trailer Jack, take into account that the Trailer Jack will swing upward to a horizontal position; allow room for this. Make sure that the Trailer Jack will not interfere with the trailer or vehicle when turns are made, or when the trailer travels over speed bumps or up and down boat ramps.
5. The best way to install the Trailer Jack is when the trailer is attached to the tow vehicle and both are located on a flat, level solid surface.
6. The Trailer Jack is heavy. You will need assistance to properly mount this product to the trailer tongue. If you are not accustomed to doing this type of work, the Trailer Jack should be set-up by a qualified service technician.
7. See mounting hardware below.



8. Attach the Trailer Jack to the trailer tongue by securing Swivel Plate to the two Back Plates; use Bolts, Spring Washers, Nuts. With the Trailer Jack in place, fine tune its position by using a mallet to lightly tap it into the ideal position. Now firmly tighten all hardware.
9. Now test the Trailer Jack. Crank the Handle to raise (clockwise) and lower (counterclockwise) the Trailer Jack.

Pull the Pulling Handle to disengage the Swivel Plate so that the Trailer Jack can be moved to the up (horizontal position).

Engage the Lock Handle with the Trailer Jack in both the vertical and horizontal positions, to make sure the Trailer Jack locks in place.

Make any needed adjustments and go back and check again that all hardware is securely tightened.

Using the Trailer Jack

To mount trailer to tow vehicle:

1. Rotate the Handle clockwise to raise the trailer tongue to a level slightly above the tow vehicle's hitch. Move trailer so that the trailer's hitch is directly over the tow vehicle's hitch ball.
2. Turn the Handle counterclockwise to lower the tongue hitch onto the vehicle's hitch ball. Secure the trailer with the hitch retainer.
3. Keep turning the Handle counterclockwise to fully retract the Trailer Jack.
4. Pull the Pulling Handle and swing the Trailer Jack to the up, horizontal position. Align holes in Swivel Plate and push Lock Handle back in place to secure Trailer Jack in this up position before moving the trailer. Always attach safety chains.

To dismount trailer from tow vehicle:

1. Chock wheels of trailer.
2. Pull on Pulling Handle and swing the Trailer Jack down to the vertical position. Align holes in Swivel Plate and push Lock Handle back in place to secure Trailer Jack in this position.
3. Turn the Handle clockwise to raise the Trailer Jack so that the Wheel touches the ground. Then raise the Trailer Jack slightly so that the weight of trailer tongue is supported by the Trailer Jack; this will make it easier to disconnect the tongue hitch.
4. Disconnect safety chains and any electrical wiring connecting the trailer to the tow vehicle.
5. If needed, raise the Trailer Jack slightly so the trailer tongue hitch completely clears the hitch ball, and disconnect the trailer.
6. Carefully drive the vehicle away from the trailer.

Caring for the Trailer Jack:

Frequently check to make sure all hardware is tight.

Inspect the Trailer Jack periodically for cracked or broken components.

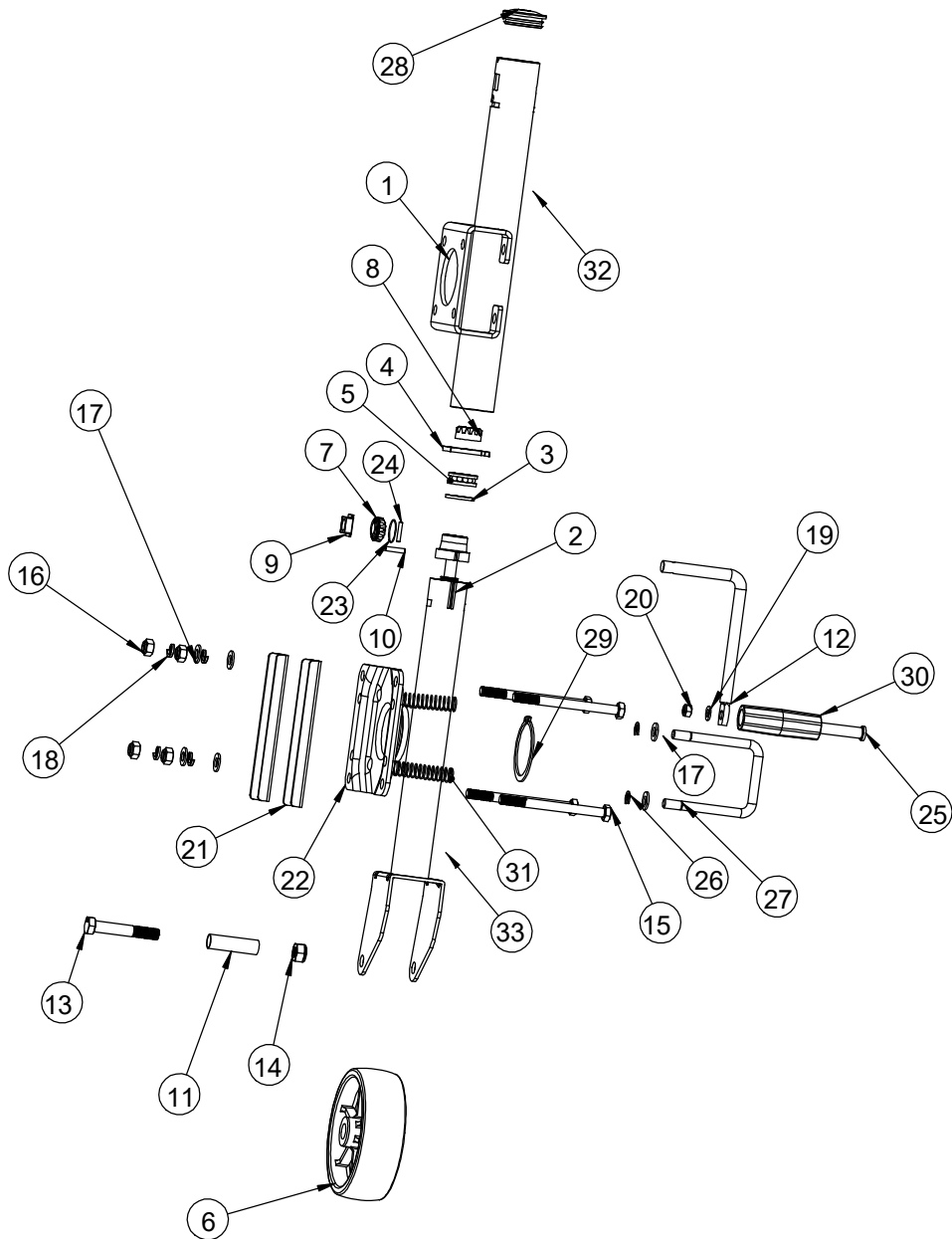
Do not continue to use the Trailer Jack if damage is noted.

Frequently check the Pulling Handle and related springs and retaining rings; check to make sure that Lock Handle engages properly and that it will properly lock the Trailer Jack in the up and down position. Grease all moving components.

Parts List and Assembly Diagram - 6039130

Part	Description	Qty
1	Connect Plate	1
2	Inner Tube Riveting Joint	1
3	Flat Washer	1
4	Screw Rod Locator	1
5	Bearing	1
6	Caster	1
7	Drive Gear	1
8	Driven Gear	1
9	Handle Locator	1
10	Gear Pin	1
11	Shaft Sleeve	1
12	Handle	1
13	M12x75mm Bolt	1
14	M12 Nut	1
15	M10 Bolt	4
16	M10 Nut	4

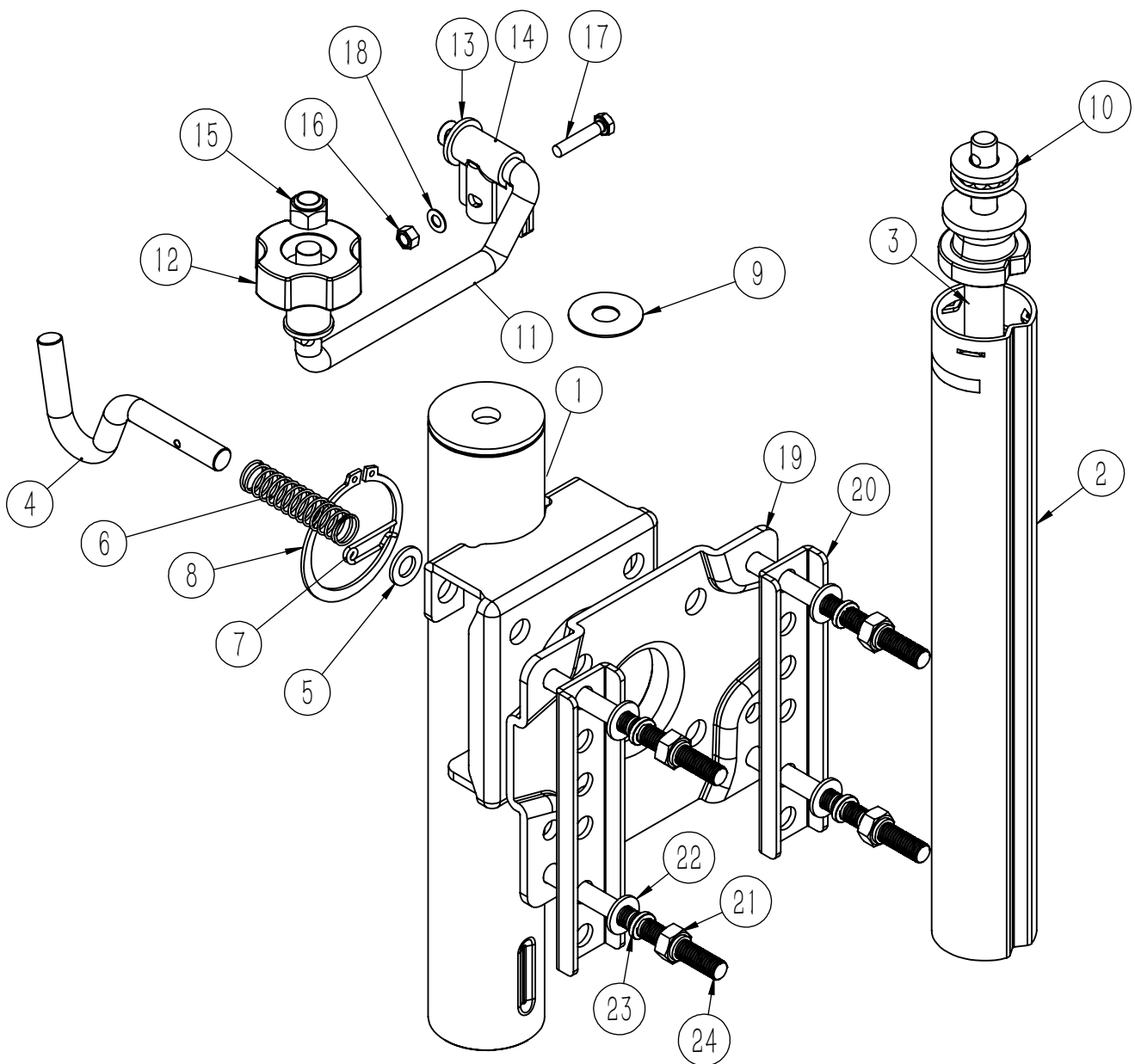
Part	Description	Qty
17	M10 Washer	6
18	M10 Spring Washer	4
19	M8 Flat Washer	1
20	M8 Nut	1
21	U Bracket	2
22	Adapter Plate	1
23	Steel Ring	1
24	Straight Pin	1
25	Bolt for Handle	1
26	Snap Ring	2
27	U - Pin	1
28	Cap	1
29	Spring Ring	1
30	Plastic Sleeve	1
31	Spring	2
32	Outer Tube	1
33	Inner Tube	1



Parts List and Assembly Diagram - 6039134

Part	Description	Qty
1	Outer Tube	1
2	Inner Tube	1
3	Screw Rod	1
4	L - Pin	1
5	M10 Washer	1
6	Spring	1
7	R - Pin	1
8	Spring Washer	1
9	φ13-φ36-1 Washer	1
10	Bearing	1
11	Handle	1
12	Plastic Handwheel	1

Part	Description	Qty
13	M12-φ24-2.5 Washer	2
14	Handle Bracket	1
15	M12 Nut	1
16	M6 Nut	1
17	M6×30 Bolt	1
18	M6 Flat Washer	1
19	Connect Plate	1
20	U - Bracket	2
21	M10 Nut	4
22	M10 Flat Washer	4
23	M10 Spring Washer	4
24	M10*120 Bolt	4



Distributed by:

TRACTOR SUPPLY COMPANY

5401 VIRGINIA WAY

BRENTWOOD, TN 37027

For customer support,

call: 1-888-376-9601

www.TractorSupply.com

MADE IN VIETNAM