



## TRV 2000 LB WELD ON TUBULAR SWIVEL TRAILER JACK

**6039128**



## TRV 2000 LB TOP WIND TRAILER JACK

**6039132**



### **WARNING:**

**Read, Understand, Follow and Save These Instructions.**

Failure to follow all warnings and instructions may result in product failure, property damage, serious personal injury.

The warnings, cautions and instructions discussed in this instruction manual cannot cover all possible conditions or situations that could occur. It must be understood by the operator that common sense and caution are factors which cannot be built into this product, but must be supplied by the operator.

# Basic Safety Information

---

Keep work area clean and well lit. *Cluttered or dark areas invite accidents.*

## Personal Safety

---

1. **Stay alert, watch what you are doing and use common sense when operating a tool. Do not use a tool while you are tired or under the influence of drugs, alcohol or medication.** *A moment of inattention while operating tools may result in serious personal injury.*
2. **Use personal protective equipment. Always wear eye protection.** *Safety equipment such as non-skid safety shoes or a hard hat used for appropriate conditions will reduce personal injuries.*

## Service

---

**Have your tool serviced by a qualified repair person using only identical replacement parts.** *This will ensure that the safety of the tool is maintained.*

## Specific Safety Warnings

---

1. Mounting bracket must be attached by certified welder.
2. Do not exceed rated capacity.
3. **THE JACK IS DESIGNED FOR USE WITH A ROUND JACK MOUNT. THE ROUND JACK MOUNT ALLOWS THE JACK TO BE SWIVELED AND SAFELY LOCKED IN PLACE WHEN THE JACK IS NOT BEING USED. DO NOT ATTEMPT TO WELD THE JACK IN A VERTICAL POSITION DIRECTLY ONTO THE TRAILER TONGUE.**
4. **WELDING IS REQUIRED TO SECURELY AND PERMANENTLY ATTACH THE JACK TO THE TRAILER TONGUE. ONLY A QUALIFIED, CERTIFIED, WELDER SHOULD DO THE WELDING.** A poor weld may cause the trailer to fall suddenly, potentially causing serious personal and/or property damage.
5. **DO NOT EXCEED THE MAXIMUM LIFT CAPACITY (2,000 POUNDS) FOR THE JACK.** Overloading the Jack could cause personal injury and/or property damage. **Be aware of dynamic loading!** A sudden drop of the Jack (with load attached) may create for a brief instant, an excess load, which may result in damage to the product and/or personal injury.
6. **DO NOT USE THE JACK ON ANY SOFT GROUND SURFACE.** Make sure the Jack is used on a dry, hard, ground surface capable of supporting the weight of the Jack, the trailer, contents being lifted, and any additional tools and equipment. Do not use on asphalt, which may soften in hot weather.
7. **ALWAYS KEEP HANDS, FINGERS, ARMS, AND FEET OUT FROM UNDER THE TRAILER TONGUE WHEN APPLYING OR RELEASING A LOAD.** Remain clear of the trailer when raising or lowering. People and animals should be kept at a safe distance when using the Jack.
8. **USE EXTREME CAUTION WHEN APPLYING OR RELEASING A LOAD.** Never allow the load to suddenly release. Slowly and carefully apply and release the load.
9. **NEVER LIFT A TRAILER WITH ANYONE ON IT.** Do not allow others in the lift area while operating the Jack.

## Specifications

---

SKU	6039128
Weight Capacity	2000 lb.
Travel Length	15"
Lift Range	16" – 31"
Handle Operation	Top Wind

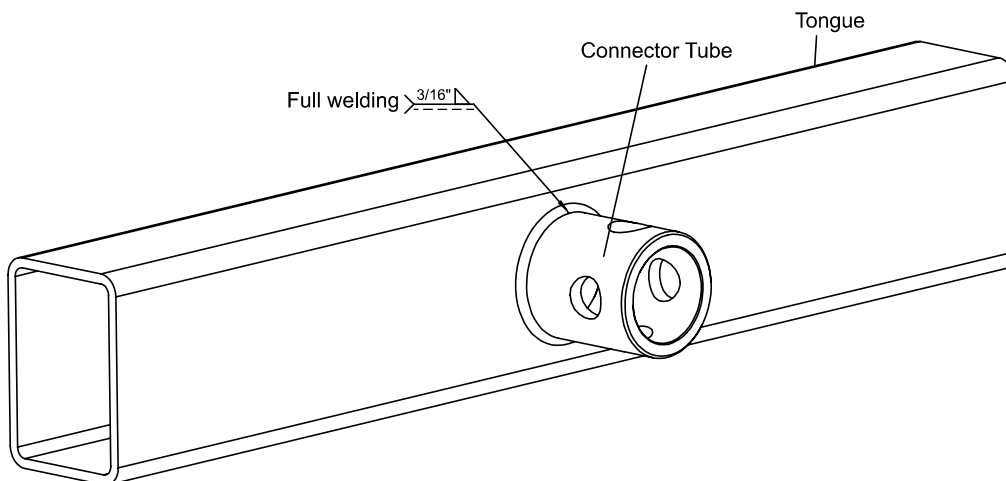
SKU	6039132
Weight Capacity	2000 lb.
Travel Length	10"
Lift Range	11" – 21"
Handle Operation	Top Wind

# Mounting

## **⚠️ WARNING**

**TO PREVENT SERIOUS INJURY AND DEATH FROM TRAILER JACK DETACHMENT OR FAILURE:**  
All welding must be performed by an AWS certified welder to meet all applicable safety regulations by DOT, NHTSA and all other governmental and standards agencies.

1. All welding surfaces must be prepared and cleaned thoroughly to allow a proper weld to be created.
2. Place the weld-on Connector Tube (15) against the tongue and well all around with a 3/16" fillet weld. Align one set of mount holes vertically.
3. After welding, welds must be properly cleaned and painted or otherwise protected from corrosion and deterioration.
4. Make the jack to the Connector Tube and secure with the supplied Pin (14).



## **INSPECTION, MAINTENANCE AND CLEANING**



Procedures not specifically explained in this manual must be performed only by a qualified technician.

### **TO PREVENT SERIOUS INJURY:**

Remove load from Trailer Jack, park towing vehicle and trailer on flat, level surface, and chock tires before performing any inspection, maintenance or cleaning procedures.

### **TO PREVENT SERIOUS INJURY FROM TOOL FAILURE:**

Do not use damaged equipment. If abnormal noise or vibration occurs, have the problem corrected before further use.

1. **BEFORE EACH USE**, inspect the general condition of the Jack. Check for loose screws, misalignment or binding of moving parts, cracked, bent, or broken parts and any other condition that may affect its safe operation. Check the Round Jack Mount regularly to assure the welds remain solid. Inspect the entire unit for corrosion that may be caused by exposure to salt water or weather. If abnormal noise or vibration occurs, have the problem corrected before further use. **Do not use damaged equipment.**
2. **IF THE JACK HAS BEEN USED IN SALT WATER**, rinse the entire unit thoroughly with fresh water. Then, use a premium quality, lightweight oil to lubricate all moving parts.
3. **KEEP ALL PARTS LIGHTLY LUBRICATED TO PREVENT CORROSION.** If corrosion develops, you may paint exterior parts of the Jack to arrest and prevent further damage.

## To Mount The Trailer To The Towing Vehicle:

---

**NOTE:** Do not attempt to move the trailer tongue if it is too heavy. You will need assistance for this procedure.

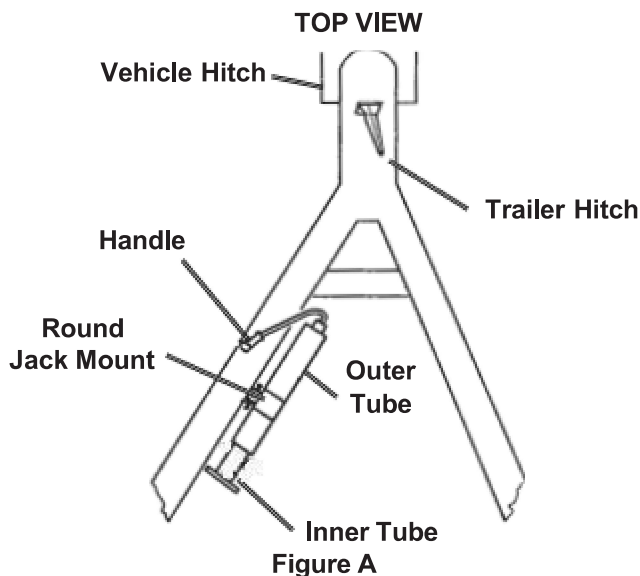
1. Make sure the trailer's wheels are properly chocked to prevent unwanted trailer movement.
2. With assistance by a "spotter", move the towing vehicle in place so that the vehicle's hitch is in close proximity to the trailer hitch.
3. Turn the Handle *clockwise* to raise the trailer's hitch slightly above the level of the vehicle's hitch.
4. Have a "spotter" direct you as you slowly and carefully back the vehicle until the vehicle's hitch ball is positioned directly beneath the trailer's hitch.
5. Loosen the trailer's hitch retainer mechanism. Next, slowly turn the Handle *counterclockwise* to lower the trailer's hitch firmly onto the vehicle's hitch ball. Then, tighten the trailer's hitch retainer mechanism.
6. Continue turning the Handle *counterclockwise* until the Inner Tube is fully retracted into the Outer Tube. Then, re-insert the Lock Pin in the hole nearest the bottom edge of the Outer Tube.
7. Remove the *Pin* that comes with the Round Jack Mount. Turn the Jack to its horizontal position (parallel to the trailer tongue). Then, re-insert the Pin in the Round Jack Mount to lock the Jack horizontally in place.

## To Dismount The Trailer From The Towing Vehicle:

---

**WARNING! TO PREVENT SERIOUS INJURY:**

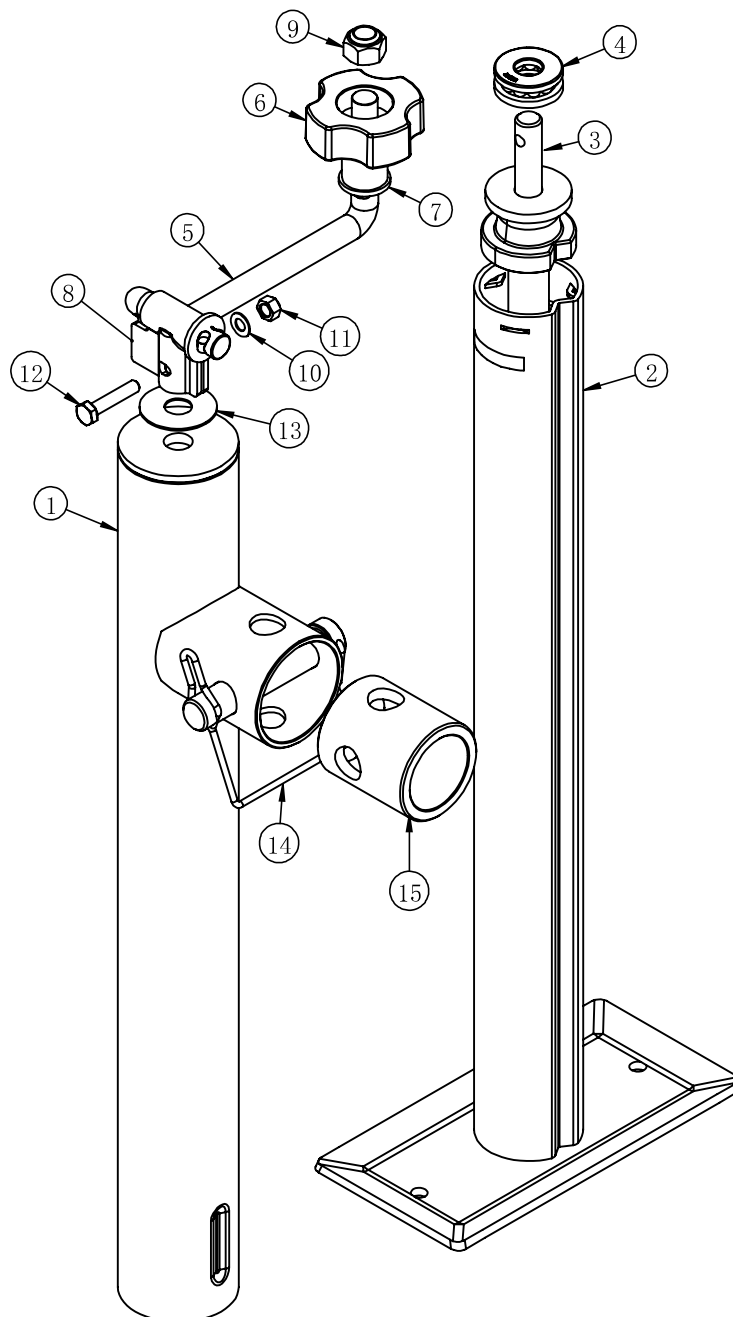
Before dismounting, make sure the trailer wheels are properly chocked to prevent the trailer from rolling.



2. Turn the Handle *counterclockwise* until the base of the Inner Tube rests solidly upon the ground surface.
  3. Continue to turn the Handle *counterclockwise* until the base of the Inner Tube begins to take the weight of the trailer. This will make it easier to disengage the trailer's hitch.
  4. Chock the wheels of the trailer. Then, disengage the trailer's hitch.
- NOTE:** Make sure to disconnect any safety chains, electrical connections, and other connections between the vehicle and the trailer.
5. Once the trailer is completely disengaged from the vehicle, slowly and carefully drive the vehicle away from the trailer.
- CAUTION!** Make sure to have a "spotter" watch this procedure to ensure that people and the trailer are clear of the vehicle, and that the trailer does not roll away.
1. With the trailer still connected to the vehicle's hitch, remove the *Pin* that comes with the Round Jack Mount. Turn the Jack to its vertical position. Then, re-insert the Pin in the Round Jack Mount to lock the Jack vertically in place.

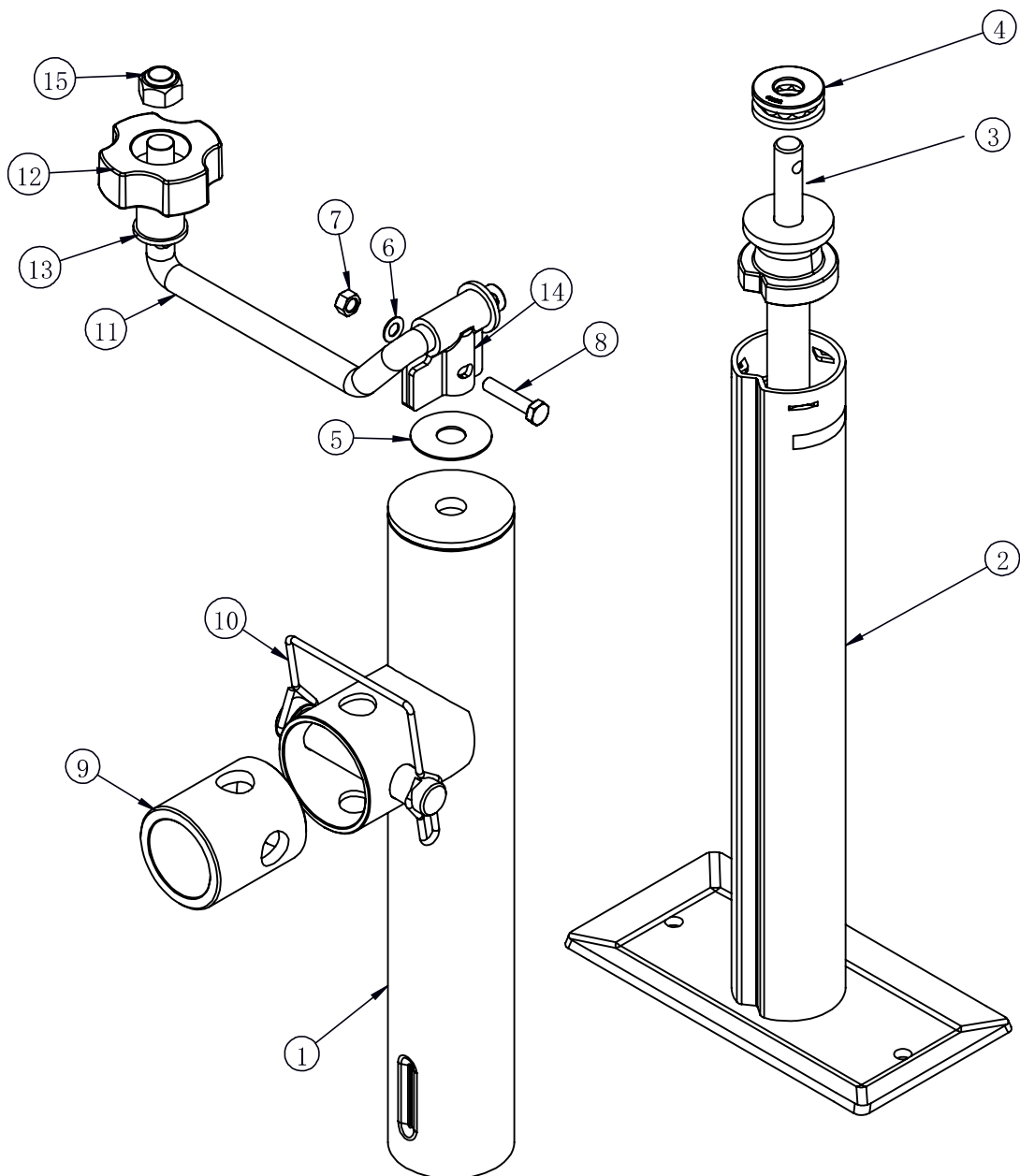
# Parts List and Assembly Diagram - 6039128

Part	Description	Qty
1	Outer Tube	1
2	Inner Tube	1
3	Screw	1
4	Bearing	1
5	Handle	1
6	Plastic Handwheel	1
7	M12- $\phi$ 24-2.5 Washer	2
8	Fixing Bracket	1
9	M12 Nut	1
10	M6 Washer	1
11	M6 Nut	1
12	M6 $\times$ 30 Bolt	1
13	$\phi$ 13- $\phi$ 36-1 Washer	1
14	$\phi$ 16-91.5 Pin	1
15	Connector Tube	1



# Parts List and Assembly Diagram - 6039132

Part	Description	Qty
1	Outer Tube	1
2	Inner Tube	1
3	Screw	1
4	Bearing	1
5	φ13-φ36-1 Washer	1
6	M6 Washer	1
7	M6 Nut	1
8	M6×30 Bolt	1
9	Connector Tube	1
10	φ16-90 Pin	1
11	Handle	1
12	Plastic Handwheel	1
13	M12-φ24-2.5 Washer	2
14	Fixing Bracket	1
15	M12 Nut	1



---

**Distributed by:**  
**TRACTOR SUPPLY COMPANY**

**5401 VIRGINIA WAY**  
**BRENTWOOD, TN 37027**

**For customer support,**

**call: 1-888-376-9601**

**[www.TractorSupply.com](http://www.TractorSupply.com)**

**MADE IN VIETNAM**