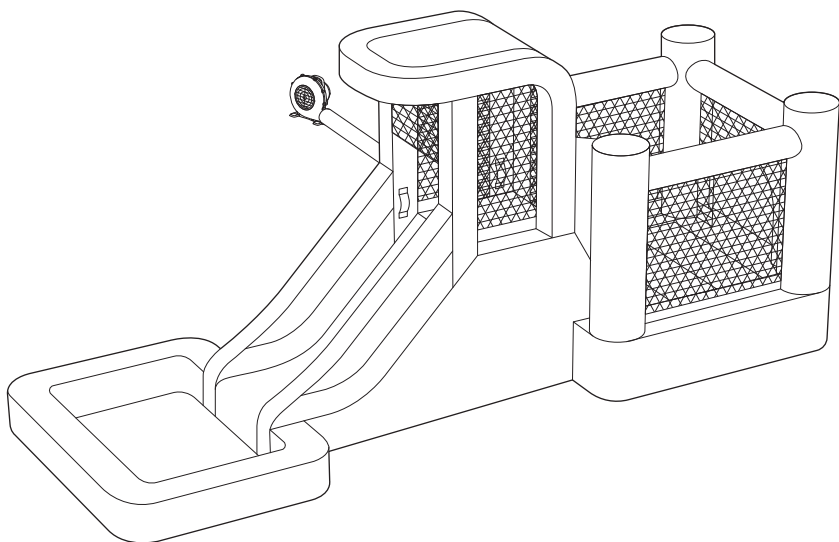


Bestway®

OWNER'S MANUAL

5342YE



www.bestwayusa.com

Please note, image is for illustration purposes only; product may differ in appearance.

IMPORTANT SAFETY INSTRUCTIONS

READ ALL INSTRUCTIONS BEFORE ASSEMBLING THIS INFLATABLE DEVICE AND KEEP INSTRUCTIONS FOR FUTURE USE. FAILURE TO FOLLOW THESE INSTRUCTIONS COULD RESULT IN SERIOUS INJURY OR DEATH.

⚠ WARNING

Electrocution Risk



Keep all electrical lines, radios, speakers, and other electrical devices away from inflatable device. Do not place inflatable device near or under overhead electrical lines.

⚠ WARNING

Prevent Drowning



Children under 5, especially toddlers are at high risk of drowning. Closely watch children who are *in or near* this inflatable device. Empty inflatable device or prevent access when not in use.

PREVENT YOUNG CHILDREN FROM DROWNING:

- Install fencing or other approved barrier around all sides of the inflatable device.
- State or local laws or codes may require fencing or other approved barriers. Check state or local laws and codes before setting up the inflatable device.
- Drowning occurs silently and quickly. Assign an adult to supervise the inflatable device.
- Keep children in your direct sight when they are in or near the inflatable device and when you are filling and emptying the inflatable device.
- When searching for a missing child, check the pool first, even if you think your child is in the house.

BE PREPARED TO RESPOND TO AN EMERGENCY:

- Keep a working phone and list of emergency numbers near the inflatable device.
- Become certified in cardiopulmonary resuscitation (CPR) so you can respond to an emergency.

WARNING:

- Failure to follow the installation and operating instructions present a risk of serious injury or death.
- Place the inflatable device on level ground, not less than 10 ft (3 m) in any direction from any structure or obstruction such as a fence, garage, house, overhanging branches, laundry lines, or electrical wires.
- Do not install inflatable device over concrete, asphalt, packed earth, carpet or any other hard surface. A fall onto a hard surface can result in serious injury to the user.
- To be used on soft ground only, the impact absorbing material (eg. Rubber mulch, engineered wood fiber (EWF) etc) shall be at least 6.6 ft (2 m) from opening in all directions away from the inflatable device.
- Use of this product may cause friction burns to exposed skin. Ensure that clothing fully covers arms and legs, as well as the torso.

AIR-BLOWER SAFETY INFORMATION:

- READ AND SAVE THESE INSTRUCTIONS
- USE ONLY ON GFCI PROTECTED RECEPTACLES
- HOUSEHOLD USE ONLY

WARNING - ELECTROCUTION HAZARD: DO NOT USE EXTENSION CORDS WITH THIS PRODUCT.

WARNING:

- To reduce the risk of fire or electric shock, do not use this air blower with any solid-state speed control device.
- Prevent sharp and hard objects from dropping into and prevent liquid from flowing into the air blower.
- Do not wash the air blower with liquid, you must first unplug it from power source and then wipe it with wet cloth when you clear it.
- Do not draw and pull motor leads, and do not bump the air blower, you'd better use the air blower between 23 °F (-5 °C) and 122 °F (50 °C). If you let the air blower be baked in the high temperature, motor leads, enamelled cables and heating bodies will aging and shorten its life.

CAUTION - ELECTRICALLY OPERATED PRODUCT:

NOT RECOMMENDED FOR CHILDREN UNDER 14 YEARS OF AGE. AS WITH ALL ELECTRIC PRODUCTS, PRECAUTIONS SHOULD BE OBSERVED DURING HANDLING AND USE TO PREVENT ELECTRIC SHOCK.

KEEP CHILDREN AWAY: Do not allow children to play with or around the unit, in any way, which could result in injury. Always check the plug for any conditions which may result in the risk of fire, electric shock, or injury to persons and that, in an event such conditions, do not use the product until it was properly repaired.

SAVE THESE INSTRUCTIONS

This device complies with part 15 of the FCC Rules. Operation is subject to the following two conditions: (1) This device may not cause harmful interference, and (2) this device must accept any interference received, including interference that may cause undesired operation.

WARNING: Any changes or modifications to this unit not expressly approved by the party responsible for compliance could void the user's authority to operate the equipment.

NOTE: This equipment has been tested and found to comply with the limits for a Class B digital device, pursuant to part 15 of the FCC Rules.

These limits are designed to provide reasonable protection against harmful interference in a residential installation. This equipment generates, uses and can radiate radio frequency energy and, if not installed and used in accordance with the instructions, may cause harmful interference to radio communications. However, there is no guarantee that interference will not occur in a particular installation. If this equipment does cause harmful interference to radio or television reception, which can be determined by turning the equipment off and on, the user is encouraged to try to correct the interference by one or more of the following measures:

- Reorient or relocate the receiving antenna.
- Increase the separation between the equipment and receiver.
- Connect the equipment into an outlet on a circuit different from that to which the receiver is connected.
- Consult the dealer or an experienced radio/TV technician for help.

ELECTRICAL INSTRUCTIONS

OPERATION

Place the air blower on a steady net surface where children can be kept away. This air blower is for use on a nominal 120-volt circuit and has a grounding plug similar to the plug illustrated in sketch (A). Only connect the product to an outlet having the same configuration as the plug. Do not use an adapter with this product.

KEEP UNIT GROUNDED: Air blower should be grounded. In the event of an electrical short circuit, grounding reduces the risk of electric shock by providing an escape wire for the electric current. This product is equipped with a cord having a grounding wire with an appropriate grounding plug. The plug must be plugged into an outlet that is properly installed and grounded in accordance with all local codes and ordinances.

WARNING: Improper installation of the grounding plug is able to result in a risk of electric shock. When repair or replacement of the cord or plug is required, do not connect the grounding wire to either flat blade terminal.

The wire with insulation having an outer surface that is green with or without yellow stripes is the grounding wire.

CAUTION: Check with a qualified electrician or serviceman when the grounding instructions are not completely understood, or when in doubt as to whether the air blower is properly grounded. Do not modify the plug provided. If it will not fit the outlet, have the proper outlet installed by a qualified electrician. The appliance must be positioned so that the plug is accessible. If the supply cord is damaged, it must be replaced by the manufacturer, its service agent or similarly qualified persons in order to avoid a hazard.

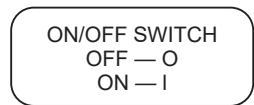
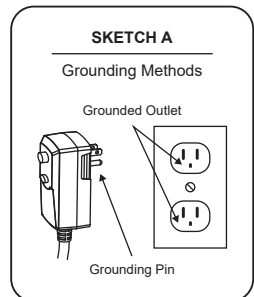
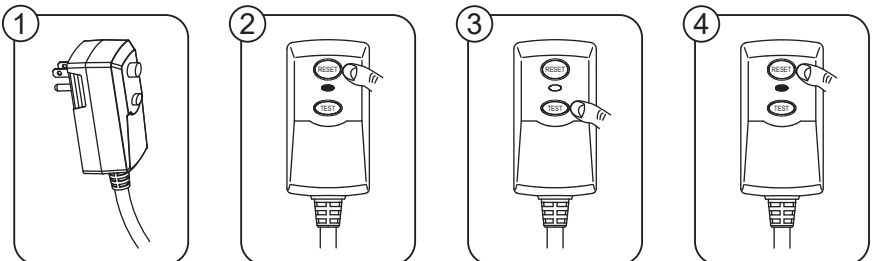
TECHNICAL SAFETY INSTRUCTION

PROTECT POWER CORD FROM DAMAGE: Never operate a unit with a damaged power cord, as this may lead to electrical or fire hazards. If the power supply cord is damaged, it must be replaced by a cord of the same type and amperage rating.

GFCI TEST

WARNING: Risk of electric shock. The GFCI must be tested before each use.

WARNING: Do not use the blower if the GFCI test fails.



PRODUCT DESCRIPTION

Item	Age	Maximum number of users	Maximum user weight capacity	Maximum weight per user	Maximum number of users for each platform area	Maximum number of users for each slide area	Maximum number of users for bouncer area	Maximum fall height	Critical fall height
5342YE	3+	3	231 lbs (105 kg)	77 lbs (35 kg)	1	1	1	35 in. (0.88 m)	50 in. (1.28 m)

Blower Rating: AC110-120V, 60Hz, 3.8A

Important: The platform, slide and climbing area are divided into sections. For each area, only one user is allowed at a time, unless otherwise indicated in the above table.

TROUBLESHOOTING

PROBLEM	CAUSE
The motor isn't running.	<ol style="list-style-type: none"> 1. Switch is not turned on. 2. The circuit is open or not connected correctly. 3. Electrical parts are damaged. 4. Objects are blocking the blower fan.
The motor is running, but it is making a scraping noise.	<ol style="list-style-type: none"> 1. Screws are loose in the vane wheel. 2. Objects are blocking the blower fan.
The motor isn't running normally.	<ol style="list-style-type: none"> 1. The power source is inconsistent. 2. The motor has been affected by condensation. 3. Electrical parts are damaged. 4. The impeller is loose.

SETUP INSTRUCTIONS

WARNING

▲ WARNING

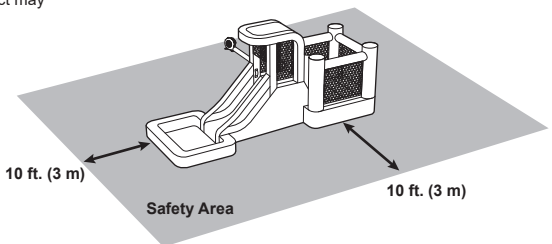
Follow Anchoring Instructions

User must read and follow anchoring instructions to ensure the proper: number of anchors used, soil conditions, and stake installation.

- Constant, competent adult supervision of children and other young users is required at all times in front of the device where all parts of play areas can be seen.
- Keep the area around the product clean, and clear of objects, to prevent slips and falls.
- Always check all anchors before and during use.
- To prevent electric shock, do not clean the blower with water.
- Children should not wear loose or baggy clothing, scarves, hoods or clothing with drawstrings or long cords while playing in this product.
- Children must remove helmets, loose clothing, scarves, headgear, shoes and glasses, as well as any sharp or hard objects from their pockets, as they may puncture the bounding surface.
- Separation of larger children from smaller children. Do not allow children to play together who are unevenly matched in weight and height.
- Do not allow users to climb or hang on containment walls.
- Do not allow users to do somersaults or rough play.
- Do not allow food, drink or gum inside unit.
- Children must not slide down head first on their stomach.
- Keep pets away from product.
- Do not attach items to the inflatable device that are not specifically designed for use with the inflatable device, such as, but not limited to, jump ropes, clothesline, pet leashes, cables and chain as they have the potential to cause a strangulation hazard.
- This toy is not safe if the anchorage system is not used as it may be lifted by light winds.
- When used without water, use of this product may cause friction burns to exposed skin.

PLACEMENT

Use on a flat, grassy area only. Do not use on pavement or hard surfaces. Usage area should be free of rocks, bumps, holes, sticks, etc. Place the product on level ground, at least 10 ft. (3 m) away from any other structures of obstructions, such as a fence, garage, house, overhanging branches, laundry lines or electrical wires.

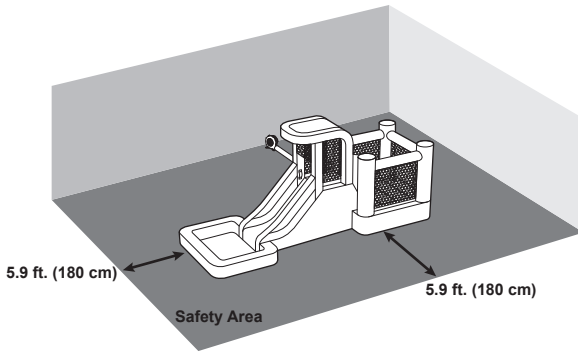


SETUP INSTRUCTIONS

INDOOR USE INSTRUCTIONS

IMPORTANT:

- The product setup location should have a minimum distance of 5.9 ft. (180 cm) from any freestanding structures or obstructions.
- We recommend adding soft cushions such as rubber, foam and carpet under the product.
- It is not necessary to use stakes indoors. The product is stable during the usage, and there is no risk of being lifted by light winds.

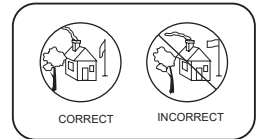
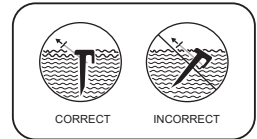


ASSEMBLY INSTRUCTIONS

For installation instructions, follow the drawings inside the manual. Drawings are for illustration purposes only. May not reflect actual product. Not to scale.

NOTE:

- Place on level ground and firm grass or soil to allow proper use of stakes.
 - Do not set up the inflatable device on a slope or incline.
 - Stakes are to be driven straight down until the top of the stake is below ground level. Do not drive stakes at an angle.
 - For best holding strength, drive stakes into hard, dry soil. In loose or wet soil, or both, stake holding strength will be reduced.
 - Do not use the product if wind speed exceeds 20 mph (32 km/h).
 - Do not set up in windy or rainy conditions: sudden gust of wind may lift the product off the ground.
 - Only the blower provided or other manufacturer specified replacement blower should be used for inflation.
 - Use only with Ground Fault Circuit Interrupter (GFCI) receptacle.
 - Do not use extension cords with this product and keep the blower and power cord away from water.
 - Product shall be fully inflated and anchored before use.
- After inflation, the blower should run continuously while children are playing.



PARTS



001 x 1



002 x 1



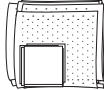
003 x 2



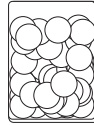
004 x 14



005 x 1



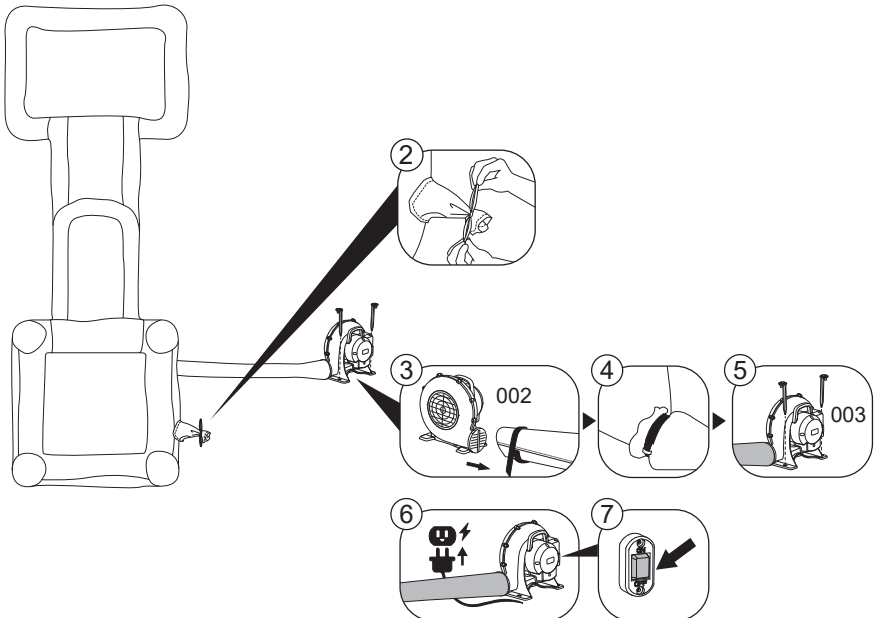
006 x 1



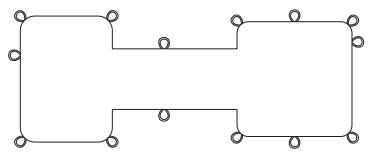
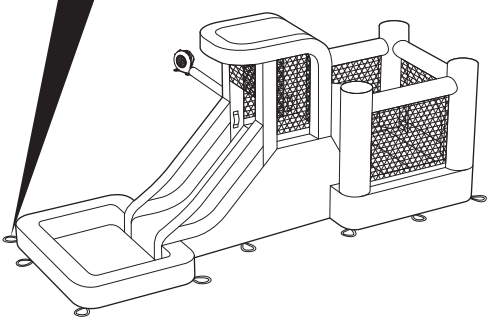
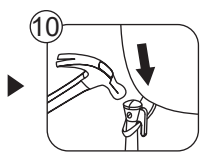
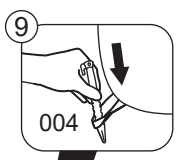
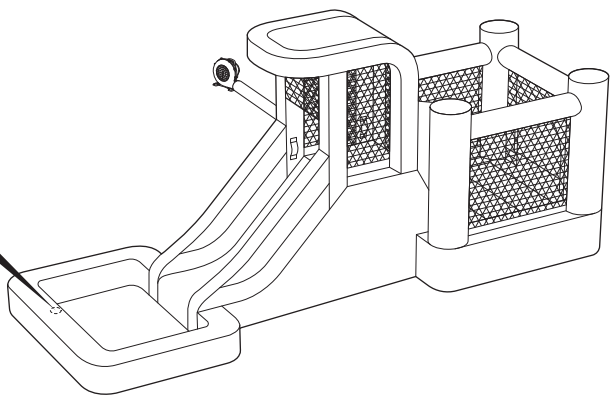
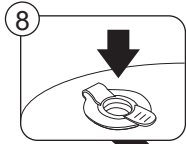
007 x 50

ASSEMBLY

①



ASSEMBLY



DRAINING & DEFLATION (IF APPLICABLE)

IMPORTANT:

- Drain the bouncer park of all water to prevent mold and mildew. Product should be completely dry before storage. Do not fold and store bouncer park if any moisture remains.
- All children must exit the product before deflation or draining.

1. Turn off the blower motor and unplug it from the outlet. Move the blower to dry ground if it appears that it will get wet from draining water.
2. Open the water valve and drain the water.
3. Remove stakes and move bouncer park away from the drained water to a dry area.
4. Re-stake the bouncer park and blower, tie the inflation tube to the blower, then reconnect and power up the blower.
5. Leave the bouncer park inflated until all remaining water has evaporated and the bouncer park is dry.
6. Once the bouncer park is completely dry, turn off the blower and unplug it from the outlet.
7. Untie the drawstring from the short outlet tube and allow the bouncer park to fully deflate.

MAINTENANCE

MAINTENANCE OF BOUNCER PARK:

- To clean the product, use a dry cloth or a cloth dampened with pure water or a neutral, non-flammable, non-toxic cleaning solution.
- If applicable, remove water and debris from pocket steps after each play cycle.
- After each use, inspect the product for wear and tear in the fabric; weak or torn surface must be repaired promptly. See REPAIR PATCH section for more information.

MAINTENANCE OF AIR BLOWER:

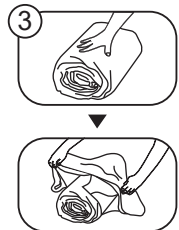
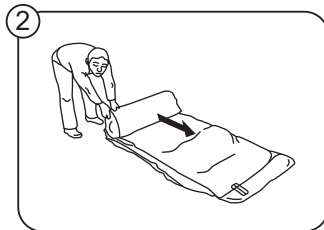
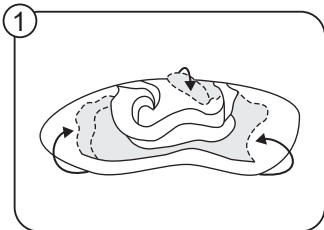
The source of electrical supply must be disconnected prior to any servicing or cleaning.

- Use a dry cloth to gently clean all surfaces.
- Store in a cool, dry place and out of children's reach.

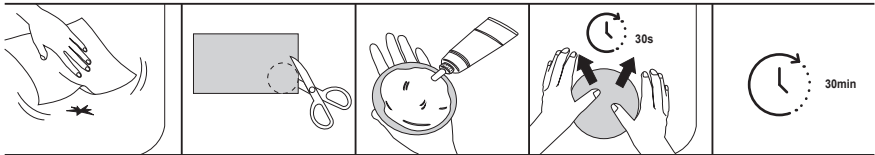
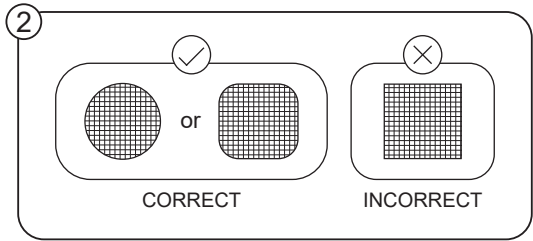
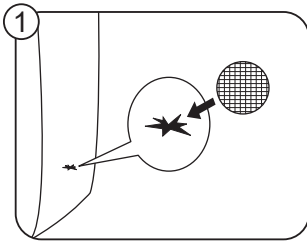
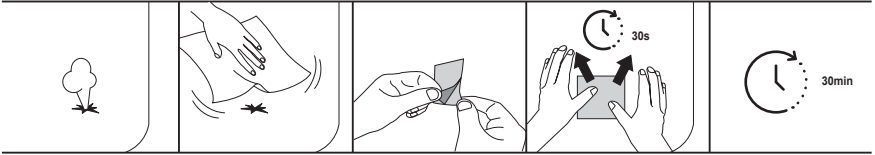
STORAGE

IMPORTANT:

1. Never store the bouncer park when wet. Allow to dry before folding for storage. Follow all previous instructions each use.
2. Store the product in a secure place away from children to prevent suffocation hazards. Never leave either the bouncer park or the blower outside when not in use.
3. Please place it in a dry and ventilated position where is not sour, not alkali and not corrosive gases. After having used it in outdoors, you should place it in a dry and ventilated room in time. Do not let water into the air-blower.



REPAIR PATCH INSTRUCTIONS



©2025 Bestway Inflatables & Material Corp. All rights reserved.
 Trademarks used in some countries under license from / Manufactured by Bestway Inflatables & Material Corp.,
 No. 208 Jin Yuan Wu Road, Shanghai, 201812, China (Tel: +86 21 69135588).
 Represented in North America by Bestway (USA) Inc., 3435 S. McQueen Road, Chandler, AZ 85286, United States of America.
www.bestwayusa.com

