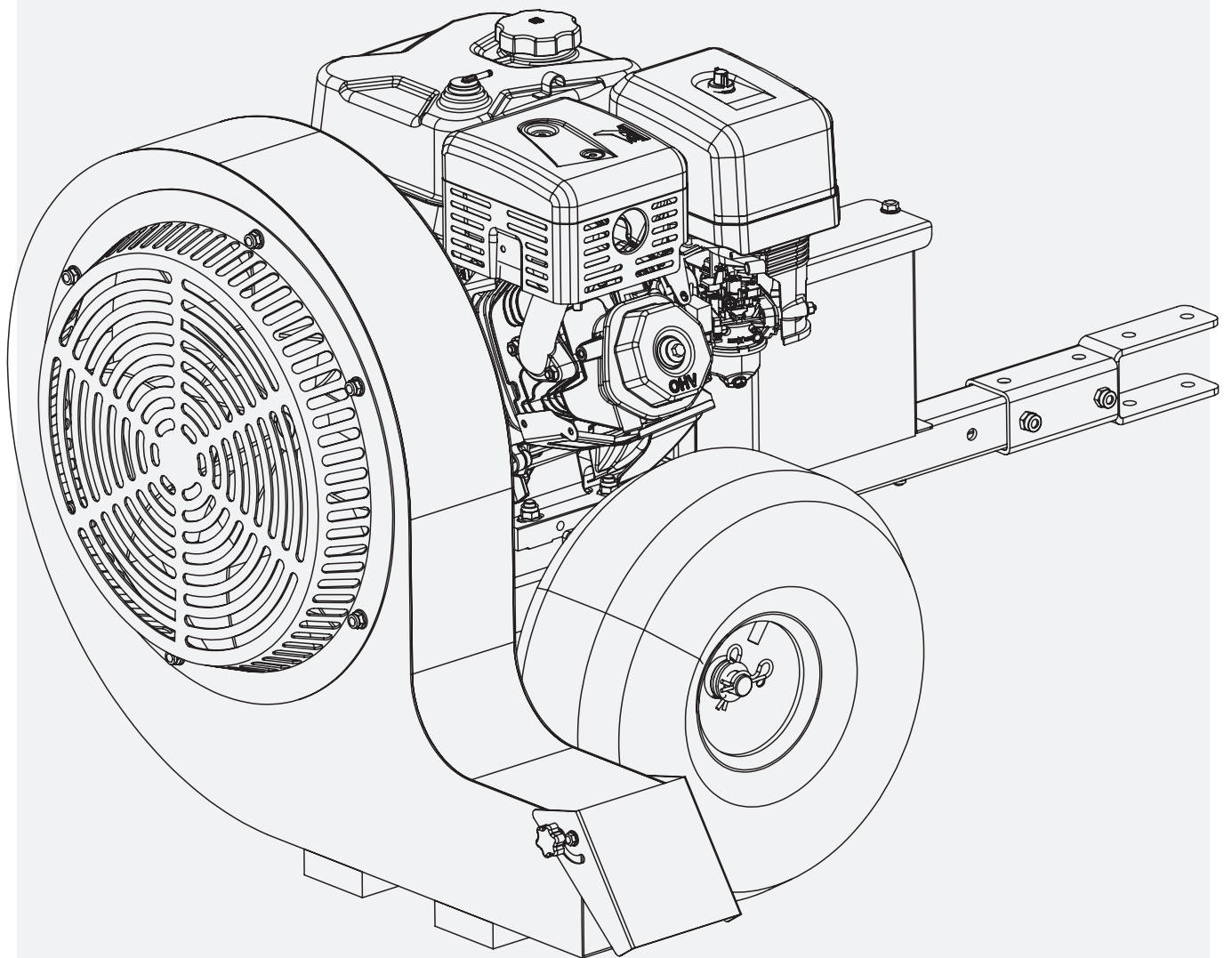




Tow-behind Leaf Blower | GUO139

Operator's Manual



Warning: Please read and thoroughly understand all instructions before operating. Failure to follow safety rules and other basic safety precautions may result in serious personal injury. Keep these instructions in a safe and easily accessible place so that they can be referred to when needed. Retain these instructions to assist in future servicing.

INDEX

Warning	3
Technical Specifications	3
Package Contents	4
Assembly	5-7
General Operational Safety Guide	8
Engine Safety Guide	9-10
General Safety Maintenance	10
Storage	11
Troubleshooting	12
Warranty	12
Exploded View & Parts List	13

Warning

Read this manual carefully before using the equipment. Follow all instructions to avoid serious personal injury. Keep this manual for future reference.

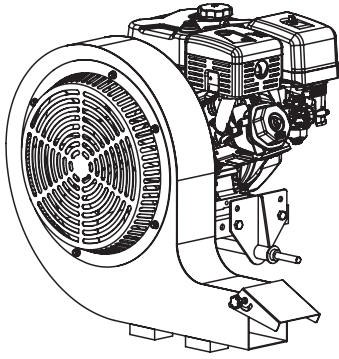
Do not allow children to operate this leaf blower. Keep children and bystanders at a safe distance while the machine is in use. Only trained and instructed individuals should operate the unit.

1. You must read and understand all safety and operating instructions before setting up or using the machine.
2. Failure to follow safety instructions may result in loss of control, injury to yourself or others, and damage to the equipment.
3. This product may expose you to chemicals known to the State of California to cause cancer, birth defects, or other reproductive harm.

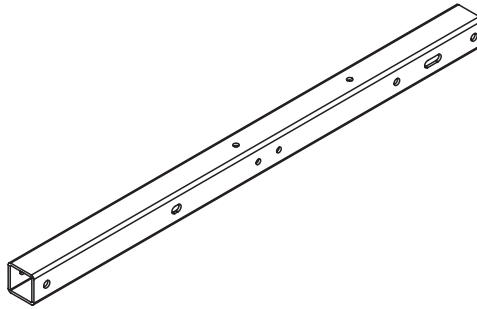
Technical Specifications

SKU#	GUO139
Impeller Diameter	18" (458mm)
Air Flow	Max. 3,000CFM (85m ³ /min)
Air Speed	Max. 207MPH (92m/s)
Wheel	16"x5.5" (406x140 mm), 2pcs
Tire Pressure	30psi
Towbar Type	Standard Clevis Pin
Coupler Height	9" (230mm)
Weight	212 lb (96 kg)
Engine Specifications	
Power	15 HP
Displacement	420cc
Speed	3600rpm
Fuel Capacity	1.72 Gallons (6.5 L)
Oil	10W-30
Working Temperature	23°F - 104°F (-5°C-40°C)

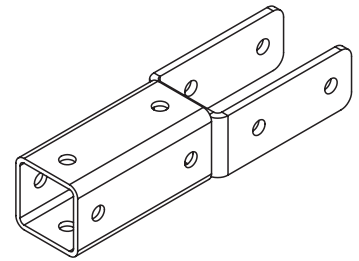
Package Contents



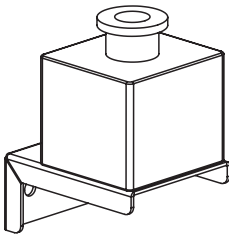
1. Main Assembly



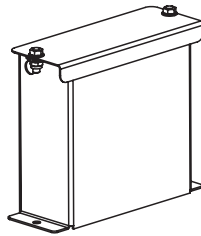
2. Towbar



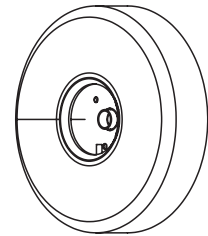
3. Clevis Pin Hitch



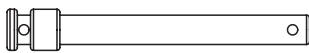
4. Emergency Stop Switch



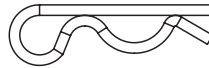
5. Battery Box



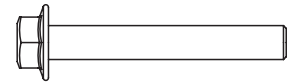
6. 16-inch Wheel



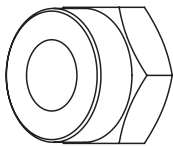
A. Pin 10x85



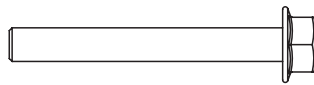
B. R-Pin 3.2x62 mm (x3)



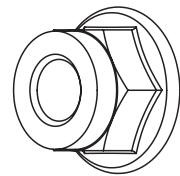
C. M10x70 Bolt (x2)



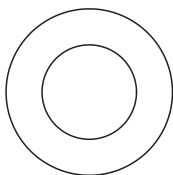
D. M10 Nut (x2)



E. M8x65 Bolt (x4)



F. M8 Nut (x4)



G. Flat Washer \varnothing 20 mm (x2)

Assembly

Install the Towbar

1. Insert the towbar into the slot on the main assembly and secure it using one Pin 10x85 and one R-Pin 3.2x62. **(Fig. 01)**
2. Attach the clevis pin hitch to the towbar using two M10x70 bolts and two M10 nuts. **(Fig. 02)**

Install the Emergency Stop Switch

Secure the emergency stop switch to the towbar using two M8x65 bolts and two M8 nuts. **(Fig. 03)**

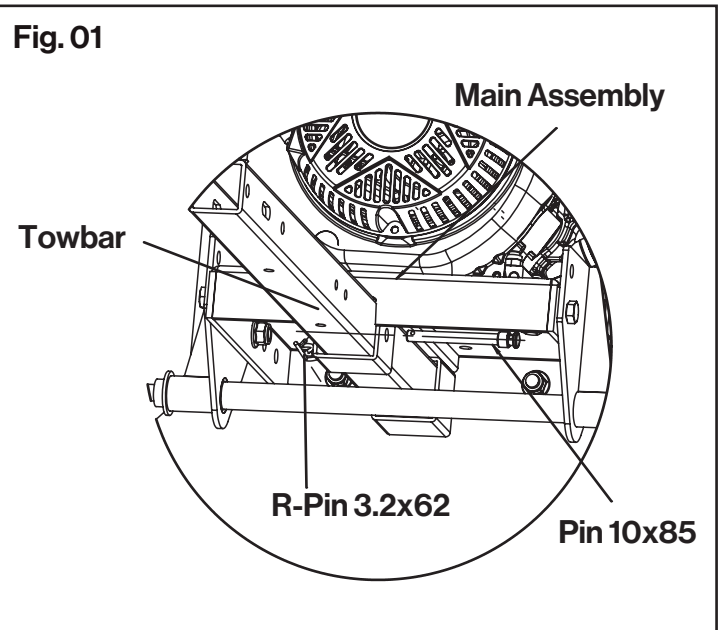


Fig. 02

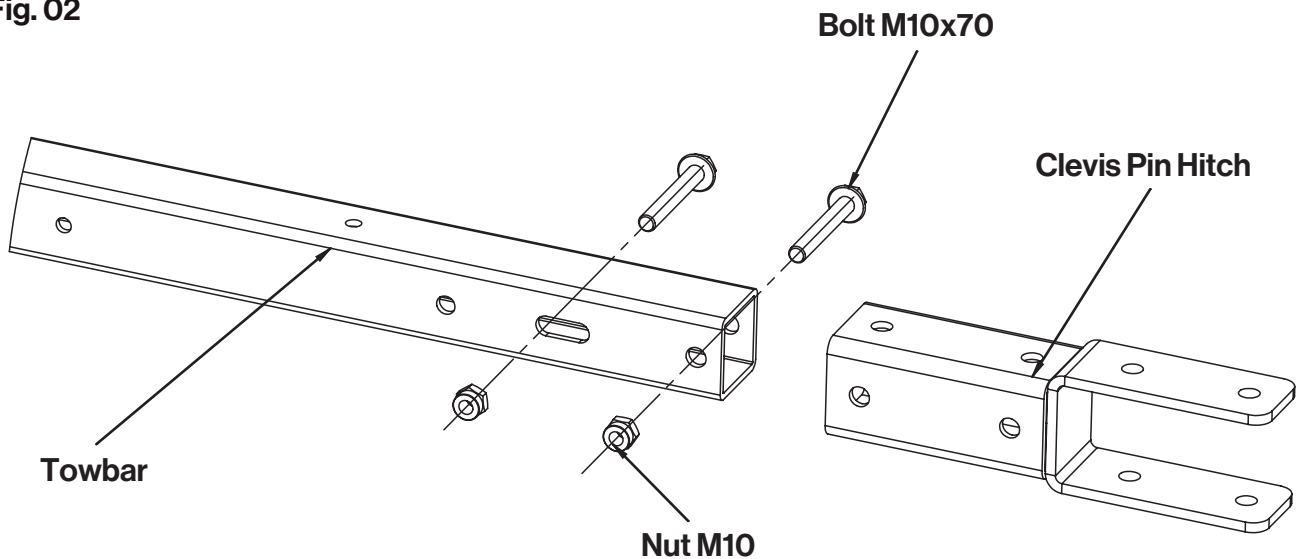
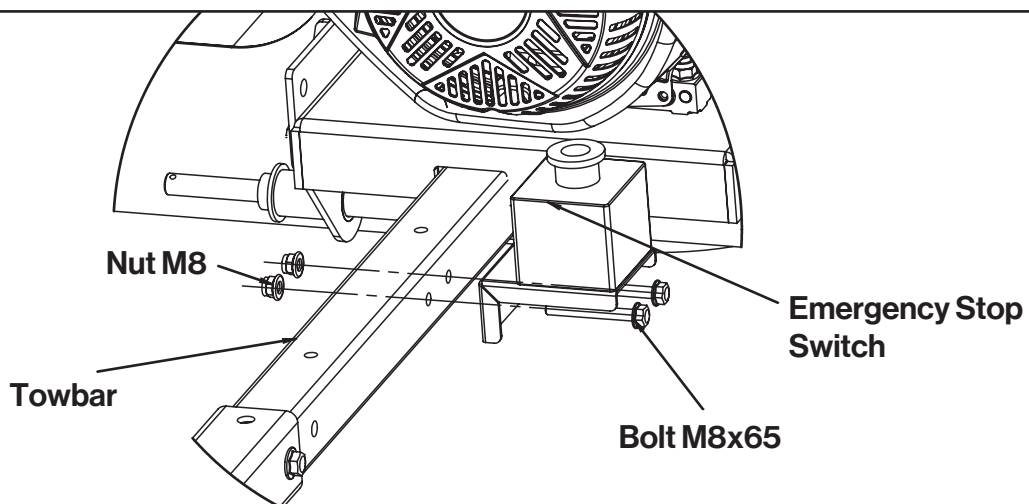


Fig. 03



Install the Battery Box

Attach the battery box to the towbar using two M8x65 bolts and two M8 nuts. **(Fig. 04)**

Install the Wheels

Slide the 16-inch wheels onto the axle shaft of the main assembly. Secure each wheel with one R-Pin 3.2x62 and one Flat Washer Ø20. **(Fig. 05)**

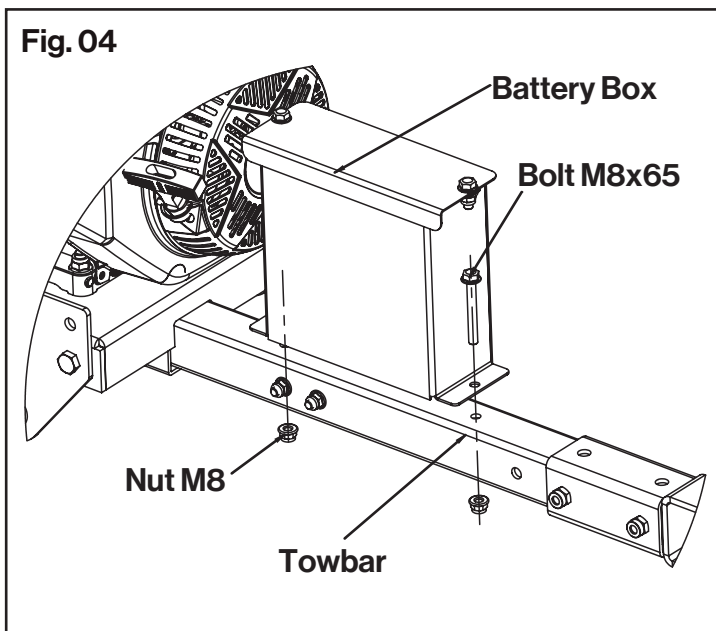
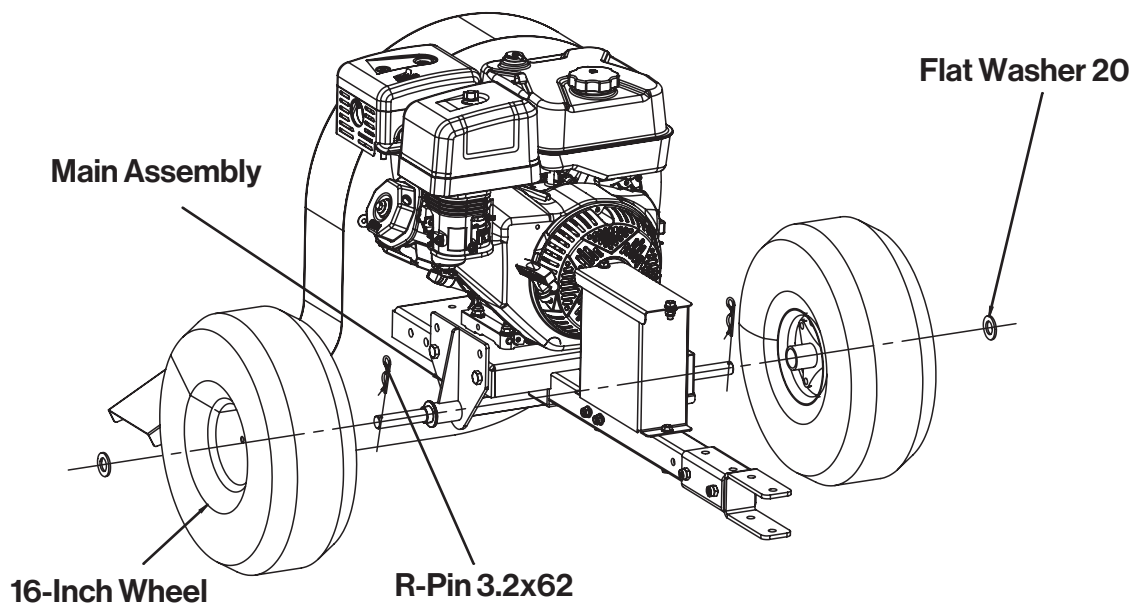
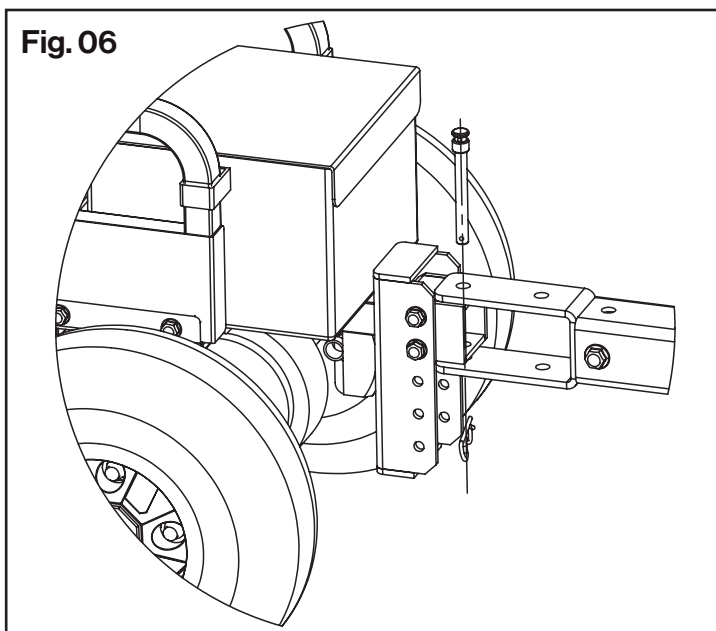
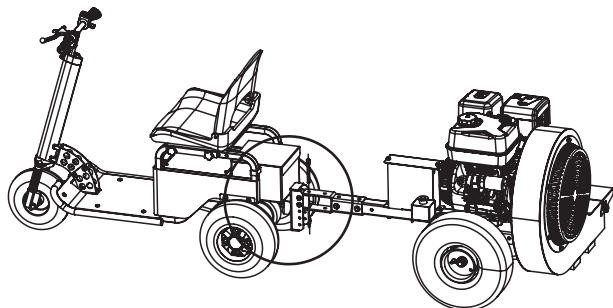


Fig. 05



Towing the Leaf Blower

Attach the clevis pin hitch to your towing vehicle or trailer. After connecting, verify that the unit moves freely and tows smoothly. **(Fig. 06)**



Adjusting the Air Outlet Direction

Loosen the star-shaped bolt to adjust the air outlet direction by repositioning the baffle plate. Once set to the desired angle, tighten the bolt to secure it.

(Fig. 07)

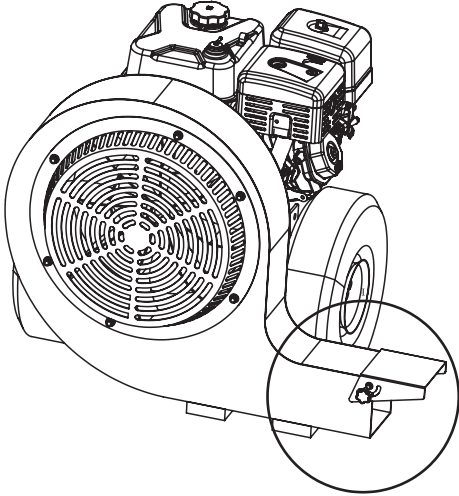
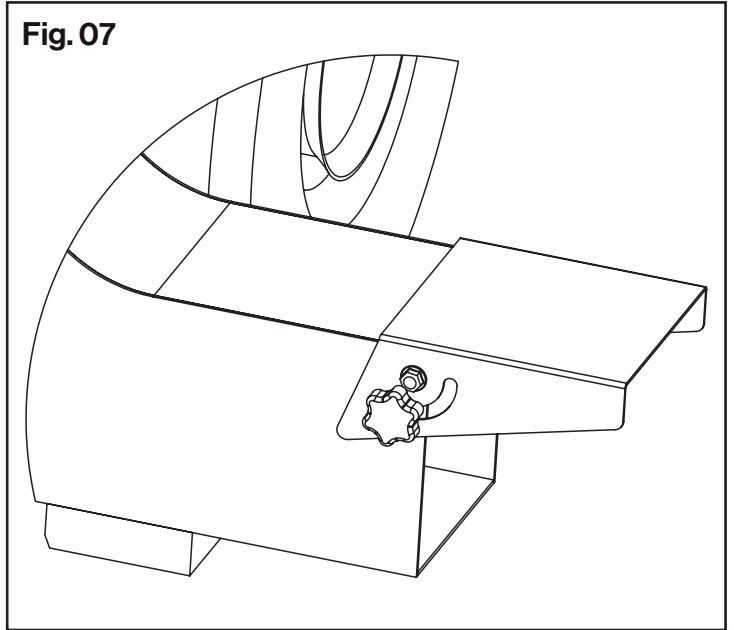


Fig. 07



General Operational Safety Guide

1. Be very careful when loading or unloading the leaf blower.
2. Slow down and use caution when making turns and crossing roads and sidewalks.
3. Do not run the engine in an enclosed area where dangerous carbon monoxide fumes can collect.
4. Always maintain secure base and solid balance while starting or operating the machine. Never lean directly over the machine. Machine should be installed completely before operating, ensure the adjustable plate and wheel are installed well per instruction. Keep a safe distance between two or more operators when working together simultaneously.
5. Be sure the area is clear of other people before operating. Stop the unit if anyone enters the area.
6. Do not look into the Air Outlet when the machine is running.
7. Operate the machine only in daylight or good artificial light.
8. Do not operate the unit while under the influence of alcohol or drugs.
9. Always wear eye and hearing protection when operating this unit.
10. Keep in mind the operator is responsible for accidents occurring to other people or property.
11. Do not use this product without protection.
12. Thoroughly inspect where equipment is to be used and remove all foreign objects.

Start-up Precautions

1. Please start the engine in strict accordance with the engine manual.
2. When starting the engine, make sure hands and feet are away from the intake or discharge of blower.
3. Do not change engine governor settings or overspeed the engine. Operating the engine at excessive speed can increase the hazard of personal injury.
4. Never attempt to reposition or machine while it is running. Doing so could cause the machine to tip over, and cause unexpected injury.
5. Never leave the machine running unattended.
6. Please park the equipment on the flat ground and turn off the engine.
7. Never continue to operate the machine if it starts making unusual noise or vibration. Shut the engine off immediately, allow the impeller to stop, disconnect the spark plug wire and secure the wire away from the spark plug. Inspect the unit for any signs of damage or foreign material.
8. When equipment is not used, always turn off the engine, wait for the impeller to come to complete stop, and disconnect the spark plug before leaving the area. Always move the unit to a safe storage area when not in use.

Engine Safety Guide

Before performing any cleaning, repairs, or inspections, always shut off the engine and ensure all moving parts have come to a complete stop. Disconnect the spark plug wire and secure it away from the spark plug to prevent accidental starting.

Handle Fuel with Care – It Is Highly Flammable

1. Use an approved fuel container.
2. Never add fuel to a running engine or hot engine.
3. Fill fuel tank outdoors with extreme care. Never fill fuel tank indoors.
4. Before restarting the engine, please clean up spilled fuel before restarting.

Gasoline Fires and Safe Fuel Handling

Use caution when handling gasoline and similar fuels—vapors are extremely flammable and explosive.

1. Store extra fuel in approved containers, in a well-ventilated area away from heat sources.
2. Prevent static discharge—only use non-metal, portable fuel containers.
3. If fuel must be drained from the tank, do so outdoors. Store it in a non-metallic container, away from flame or sparks.
4. Never remove the fuel cap or refuel while the engine is running. Let the engine cool first.
5. Do not smoke when refueling or operating the unit.
6. Do not drain fuel in enclosed areas.
7. Clean up any spilled fuel immediately. Do not start the engine if fuel is spilled.
8. Inspect the fuel cap before use to ensure it seals properly.
9. Never siphon fuel by mouth.
10. An adult should always fill the fuel tank—never allow children to do so.
11. Never allow anyone under the influence of drugs or alcohol to handle fuel.
12. Keep fuel and equipment away from stoves, furnaces, and other sources of ignition.

Prevention of Burns and Fires

1. Never remove the muffler guard.
2. Do not touch the muffler—severe burns may occur.
3. Avoid contact with engine parts that may still be hot after use.
4. Keep flammable materials away from the muffler guard and other hot components.

Adding Fuel

1. Remove the fuel cap.
2. Fill the tank. Do not overfill. Leave room in the tank for fuel expansion. Refer to your engine manual for specific fuel recommendations.
3. Install and hand tighten the fuel cap.

Starting the Engine

1. See engine manual for starting up instructions.
2. Ensure engine is running full throttle before beginning operation.

Notes: For some engines, there may not be a throttle. .

Stopping the Engine

1. See engine manual for shut down procedure.
2. With engines equipped with an adjustable throttle, move the throttle to the SLOW position and wait for engine to be running a slow RPM. Then switch to STOP ENGINE as shown in the engine manual.

Notes: Stopping the engine is the only way to stop the rotor from turning.

General Safety Maintenance

1. Only trained or qualified personnel should perform repairs.
2. Never attempt maintenance, repairs, or accessory installation while the unit is running.
3. Always shut off the engine, allow the impeller to stop, and disconnect the spark plug wire before proceeding.
4. Ensure the intake and discharge areas are clear before starting. Starting the engine with debris in these areas can prevent proper operation or cause damage.
5. Only use manufacturer-approved attachments and accessories.
6. Never attempt adjustments while the unit is running.

If a foreign object is struck, stop the engine, disconnect the spark plug, and wait for all parts to stop moving before inspecting for damage. Repair as needed before restarting.

Impeller Precautions

1. Do not attempt to remove material from the intake or discharge while the impeller is moving.
2. Wait until the impeller fan completely stops before performing maintenance.
3. Only replace the impeller—never bend, weld, or attempt to repair it.
4. Keep bystanders away during service.
5. Wear gloves when clearing debris—sharp edges may be present inside the housing.

Storage

1. Turn off the engine and allow it to cool completely.
2. Drain the fuel tank outdoors only.
3. Store fuel in approved, non-metallic containers in a cool, dry place.
4. Keep fuel and equipment in areas out of reach of children.
5. Store in areas free of flammable materials where fuel is handled.
6. Do not store equipment with fuel in an enclosed area or near open flames due to risk of explosion.

If Storing Equipment for Over 30 Days

1. Drain all fuel from the tank into an approved container and store in a ventilated area.
2. Run the engine until all remaining fuel in the carburetor is used up.
3. Store the unit and all parts in a dry, sheltered area out of direct sunlight and away from children.

Before Using Equipment After Long-Term Storage

1. Inspect for loose parts and tighten if needed.
2. Fill the fuel tank, check oil level, and top off if required. Refer to engine manual.
3. Check for fuel leaks and repair any before use.

Troubleshooting

Regular care and maintenance will help extend the life of your equipment. The troubleshooting section below outlines the most common issues, their causes, and recommended solutions.

WARNING

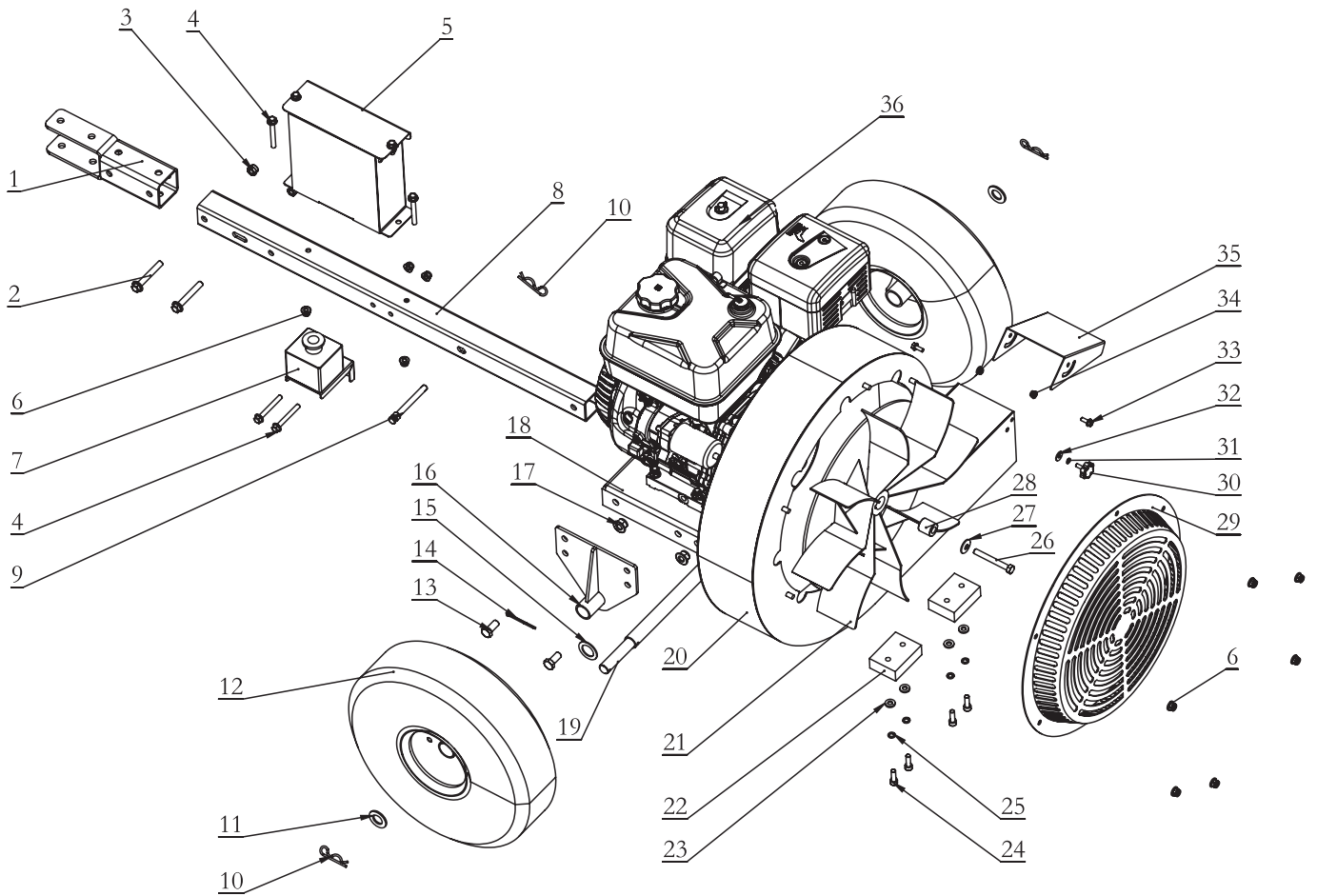
1. In order to avoid serious injury, the equipment can be maintained only after the engine stops running.
2. Always disconnect the spark plug to prevent the engine from accidentally starting.

Issue	Possible Cause	Solution
Engine won't start.	<ol style="list-style-type: none"> 1. No fuel. 2. Choke not in START position. 3. Low quality or deteriorated, old gasoline. 4. Dirty fuel passageways. 5. Spark plug cap not connected securely. 6. Spark plug fouled. 7. Low engine oil. 	<ol style="list-style-type: none"> 1. Add fuel. 2. Turn choke to START position. 3. Use fresh unleaded gasoline. 4. Clean out passageways using fuel additive. Heavy deposits may require further cleaning. 5. Connect spark plug cap properly. 6. Remove spark plug. Clean/replace as recommended in engine manual. 7. Add engine oil to proper level.
Engine stops suddenly.	<ol style="list-style-type: none"> 1. Fuel tank empty or full of impure or low quality gasoline. 2. Low oil shutdown. 3. Disconnected or improperly connected sparkplug cap. 	<ol style="list-style-type: none"> 1. After draining the fuel tank, and add fuel tank with fresh unleaded gasoline. 2. Fill engine oil to proper level. 3. Secure spark plug cap.
Abnormal vibration of equipment.	<ol style="list-style-type: none"> 1. Looseness or instability of impeller. 2. Engine loosening. 	<ol style="list-style-type: none"> 1. Check the impeller and replace it as needed. 2. Check the engine and tighten the bolts.

Warranty

Twelve (12) months for workmanship of the product, except for wearing parts. Warranty period starts from the product purchase date. Warranty covers material quality and workmanship only. Warranty does not cover product for issues caused by improper usage or any operation not in accordance with the specifications of this manual. Any modification or tampering with the product in any way voids the warranty.

Exploded View and Parts List



Part No.	Description	QTY	Part No.	Description	QTY
1	Clevis Pin Hitch	1	19	Axles	1
2	M10x70 Bolt	2	20	Impeller Housing	1
3	M10 Nut	2	21	Impeller	1
4	Bolt M8x65	4	22	Rubber Gasket	2
5	Battery Box	1	23	Flat Washer 8	4
6	Nut M8	10	24	M8 x 25 Allen Bolt	4
7	Emergency Stop Switch	1	25	Spring Washer 8	4
8	Towbar	1	26	Engine Bolt	1
9	Pin 10x85 mm	1	27	Lock Washer	1
10	R-Pin 3.2 x 62 mm	3	28	Spacer	1
11	Flat Washer 20	2	29	Air Intake Cover	1
12	16-inch Wheel	2	30	M6 x 16 Star Bolt	1
13	M12 x 25 Bolt	4	31	Flat Washer 6	1
14	Cotter Pin 4x50 mm	1	32	Spring Washer 6	1
15	Flat Washer 26	1	33	M6 x 16 Bolt	2
16	Connection Plate	2	34	M6 Nut	2
17	Nut M12	4	35	Deflector	1
18	Engine Base	1	36	Engine	1



Thank you for your support!

superhandyus.com



Great Circle USA
Support Line: 1-866-493-0524
help@greatcircleus.com
www.superhandyus.com



Follow us on social media
@SuperHandy