

For illustrative purposes only



**WE SUGGEST NOT TO RETURN
THE PRODUCT TO THE STORE**

QUESTIONS? PROBLEMS? MISSING PARTS?

For FAQ, manuals, videos or spare parts, please visit
bestwayusa.com/support




Please visit
BestwayUSA.com

58511E 58384E 58388E

- Carefully read over the important safety instructions and warnings before operating and keep this manual for future reference. Failure to follow these warnings can result in serious injury or death to users.

- To check the parts included in the box, consult the part list inside this manual. Verify that the equipment components represent the model that you had intended to purchase.
- In case of any damaged or missing parts at the time of purchase, visit our website bestwayusa.com/support.

- Bestway will not be responsible for any damage caused to the product due to mishandling or failure to follow these instructions.

- For the installation instructions, refer to the illustration steps “” inside this manual. Drawings are for illustration purposes only. May not reflect actual product. Not to scale.
- Bestway will not be responsible for any damage caused to the product due to mishandling or failure to follow these instructions.

- Maintenance must be performed for the longevity of your product.

- Be sure that your product is completely clean and dry before storage. If all parts are not completely dry, mold may result.
- Store in a dry place with a moderate temperature between 50°F / 10°C and 100°F / 38°C.

- For information concerning warranty terms, visit our website at: www.bestwayusa.com.

IMPORTANT SAFETY INSTRUCTIONS READ, FOLLOW AND UNDERSTAND ALL INSTRUCTIONS AND WARNINGS.

Carefully read and follow all information in this user manual before installing and using the pump. Retain this information for future use.

ELECTRICAL SAFETY

When installing and using this electrical equipment, basic safety precautions should always be followed, including the following:

READ AND FOLLOW ALL INSTRUCTIONS

GENERAL

WARNING: **RISK OF ELECTRIC SHOCK.** - Connect only to a grounding type receptacle. This product is provided with a ground-fault circuit-interrupter. If replacement of the plug is needed, use only identical replacement parts.

WARNING: To reduce the risk of electric shock, **IF FILTER PUMP POWER CORD BECOMES DAMAGED IN ANY WAY, THE PUMP MUST BE DISCARDED.**

Do not bury cord. Locate cord to minimize abuse from lawn mowers, hedge trimmers, and other equipment.

WARNING: To reduce the risk of electric shock, do not use extension cord to connect unit to electric supply; provide a properly located outlet.

CAUTION: To reduce the risk of electric shock the pool must be installed no closer than 6 feet (1.8 m) from any electrical outlet. Do not place portable appliances closer than 5 feet (1.5 m) from the pool.

CAUTION: For continued protection against possible electric shock this unit is to be mounted to the base in accordance with the installation instructions.

GFCI INSTRUCTIONS

The unit is provided with a ground-fault circuit-interrupter (GFCI). The GFCI plug must be tested before each use to avoid the risk of electric shock. Conduct the test before turning on the pump each time.

- To test the GFCI:
 - Push the test button. The GFCI should interrupt power.
 - Push the reset button. Power should be restored.
- If the GFCI fails to operate in this manner, the GFCI is defective.
- If the GFCI interrupts power to the pump without the test button being pushed, a ground current is flowing, indicating the possibility of an electric shock.
 - Do not use this pump.
 - Disconnect the pump and have the problem corrected by a qualified service representative before using.

WARNING: **RISK OF ELECTRIC SHOCK.** - Do not use the pump if this test fails.

For assistance, please visit the support section on our website, www.bestwayusa.com.

SAFE USE

GENERAL

WARNING: To reduce the risk of injury, do not permit children to use this product unless they are closely supervised at all times.

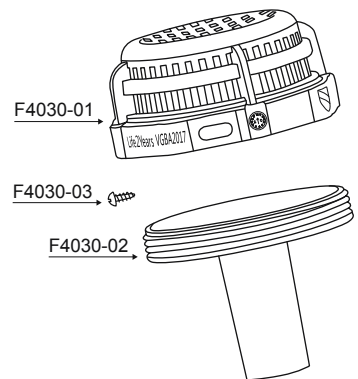
CAUTION: This pump is for use with storable pools only. Do not use with permanently-installed pools. A storable pool is constructed so that it is capable of being readily disassembled for storage and reassembled to its original integrity. A permanently-installed pool is constructed in or on the ground or in a building such that it cannot be readily disassembled for storage.

SUCTION OUTLET FITTINGS

When installing and using this equipment, basic safety precautions shall always be followed, including the following:

Prior to Use.

- All SOFAs shall be installed in accordance with the manufacturer's installation instructions.
- Refer to the following diagram for SOFA component configuration:
- SOFA components and fastener receptacles shall be clean and free of debris or obstructions during installation of cover/grate and fasteners.
- Cover/grates, when installed, shall not protrude more than 2 in. (51 mm) from the finished surface of the pool in which the SOFA is installed.
- Hand-check cover/grate for snugness to the sump/frame after installation.
- Cover/grate, including fasteners, shall be observed for damage or tampering each operational day.
- Check the integrity of the head of the suction fitting. If the product is broken, cracked, or the color has significantly faded, do not use it.



Modifications.

- Any modification that increases the flow rate of the circulation system shall require re-evaluation of the cover/grate and sump to ensure that the flow rating of the Suction Outlet Fitting Assembly (SOFA) is not exceeded.
- Any field modification made to a SOFA not authorized by the manufacturer's installation instructions shall void the SOFA certification.
- No modification shall be made to a SOFA structure or flow path unless the new configuration has been certified as new SOFA.
- The use of adhesives or other attachment methods that prevent access to suction piping or SOFA components requiring periodic servicing is prohibited.
- The SOFA-configuration specific flow ratings shall NOT be exceeded at any time the pool is open to bathers.

Maintenance Instructions.

- Use the screwdriver (not included) to disassemble the suction fitting to clean or service.
- Cover/grates and all other SOFA components shall be replaced at or before the end of their service life. Service life begins the month and year in which a SOFA component is installed with or without water.
- Missing, broken, or cracked cover/grates, sumps, mud-frames, or any other SOFA component shall be replaced before bathers are allowed to use the pool.
- Loose cover/grates and associated components shall be reattached before bathers are allowed to use the pool.
- Winterizing. Dry the suction fittings completely, and store the product in a dry room at a storage temperature of 50°F / 10°C ~ 100°F / 38°C.

SAFETY INFORMATION

Installation Information label (copy)

Manufacturers name:

GOLEADER INDUSTRIES (JINHUA) CO., LTD.

Cover part number: F4030

Service life of the cover: 2 Years

Cover flow rating: 28 GPM

Installer needs to fill in the balance of the information and permanently post it as near as feasible to the pump control.

Keep a copy of this information with the other important pool related documents.

Configuration and installed orientation: _____

Location: _____

Installed Date: _____

Please research and download General Certificate of Conformity through www.bestwayusa.com

FCC INFORMATION

This device complies with part 15 of the FCC Rules. Operation is subject to the following two conditions: (1) This device may not cause harmful interference, and (2) this device must accept any interference received, including interference that may cause undesired operation.

WARNING: Any changes or modifications to this unit not expressly approved by the party responsible for compliance could void the user's authority to operate the equipment.

NOTE: This equipment has been tested and found to comply with the limits for a Class B digital device, pursuant to part 15 of the FCC Rules. These limits are designed to provide reasonable protection against harmful interference in a residential installation. This equipment generates, uses and can radiate radio frequency energy and, if not installed and used in accordance with the instructions, may cause harmful interference to radio communications. However, there is no guarantee that interference will not occur in a particular installation. If this equipment does cause harmful interference to radio or television reception, which can be determined by turning the equipment off and on, the user is encouraged to try to correct the interference by one or more of the following measures:

- Reorient or relocate the receiving antenna.
- Increase the separation between the equipment and receiver.
- Connect the equipment into an outlet on a circuit different from that to which the receiver is connected.
- Consult the dealer or an experienced radio/TV technician for help.

SAVE THESE INSTRUCTIONS

Technical Safety Instructions

- Risk of electric shock, the pump cannot be using while people are inside the pool. If the supply cord is damaged, it must be replaced by the manufacturer, its service agent or similarly qualified persons in order to avoid a hazard.
- Using the pump with an unmatched electrical supply is dangerous and will result in catastrophic failure of pump.
- Risk of electric shock - When working with electricity, turn the electrical power off at the circuit breaker and lock breaker door. Failure to do so will result in increased risk of shock, injury and possibly death.
- Do not remove the grounding prong or modify the plug in any way. Do not use adapter plugs. Consult a qualified electrician for any questions related to the validity of your plug's grounding. Handle the pump with care. Do not pull or carry the pump by the power cord. Never pull a plug from the outlet by yanking the power cord. Keep cord free from abrasions. Sharp objects, oil, moving parts, and heat should never be exposed to the filter pump.
- Atmospheric conditions may affect the performance and life span of your filter pump. Unnecessary wear and tear may occur during periods of cold, heat and exposure to sun. Whenever possible shelter the pump from these conditions.
- Do not add chemicals in the filter pump.
- Assembly and disassembly of this product should only be performed by adults.

PARTS & TOOLS

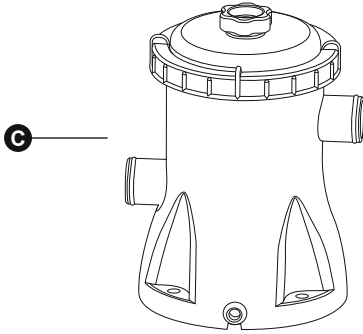


Compare the parts in your box to the parts listed in this manual. Verify that the equipment components represent the model that you had intended to purchase. If any parts are damaged or missing at the time of purchase, visit our website bestwayusa.com/support.

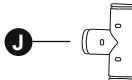
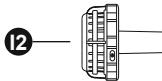
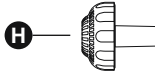
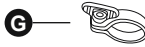
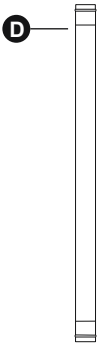
Before assembling the product, take a few minutes to become familiar with all the parts.

Filter pump assembly can be completed without additional tools.

Before setting up the pump, turning the pump on or performing any maintenance, please make sure you have read the manual carefully.



Part Letter	Part Name	QTY
C	Filter Pump	x1
D	Pump Hose	x2
E	Connection Hose	x2
G	Hose Clamp	x8
H	Pool Inlet Strainer	x1
I2	Pool Outlet Strainer	x2
J	T-Joint	x1

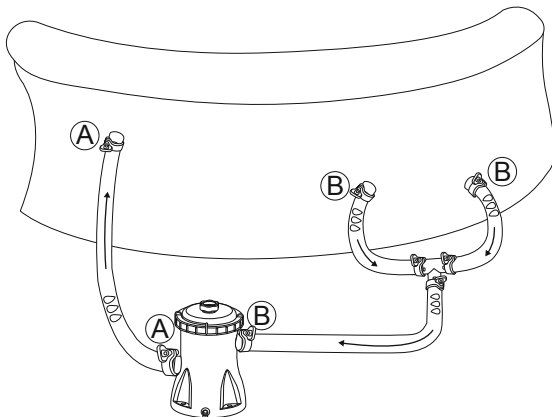




Overview

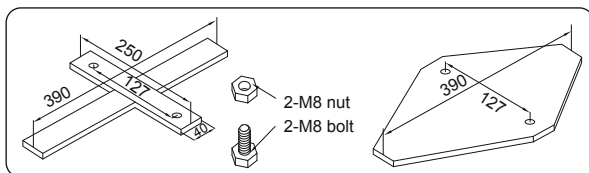
Choosing the Correct Location:

1. Place the filter pump on a solid and level ground; it must be positioned on the same level as the base of the pool. If the filter pump is in an upper or lower position than the base of the pool, the performance and life span of the filter pump can be compromised. The pool and the filter pump have to be positioned in an area with adequate drainage and easy access for maintenance operations. Never place the filter pump in a area that may accumulate water.



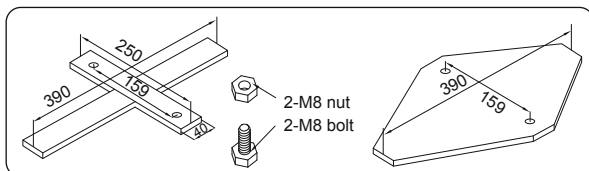
2. FOR 330GAL

The filter pump must be vertically fixed on the ground or a base made of wood or concrete before use. There should be two holes 9 mm in diameter on the base, the space between which should be 127 mm. Put filter pump on the base and attach them together by fastening the bolts and nuts. All the base parts should weigh at least over 39.7 lbs (18 kg) to prevent the pump from accidentally falling.



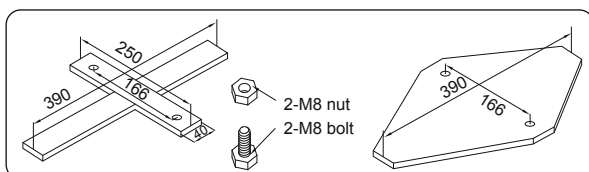
FOR 530GAL

The filter pump must be vertically fixed on the ground or a base made of wood or concrete before use. There should be two holes 9 mm in diameter on the base, the space between which should be 159 mm. Put filter pump on the base and attach them together by fastening the bolts and nuts. All the base parts should weigh at least over 39.7 lbs (18 kg) to prevent the pump from accidentally falling.



FOR 1000GAL

The filter pump must be vertically fixed on the ground or a base made of wood or concrete before use. There should be two holes 9 mm in diameter on the base, the space between which should be 166 mm. Put filter pump on the base and attach them together by fastening the bolts and nuts. All the base parts should weigh at least over 39.7 lbs (18 kg) to prevent the pump from accidentally falling.

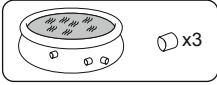


INSTALLATION INSTRUCTIONS

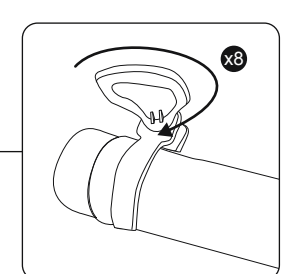
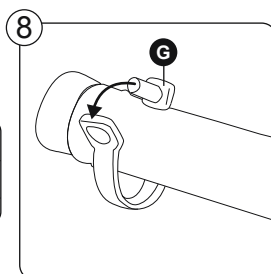
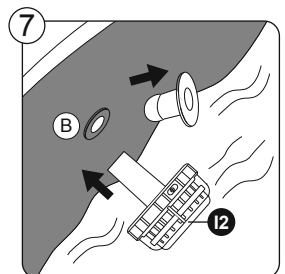
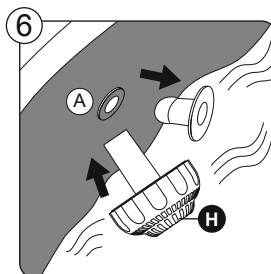
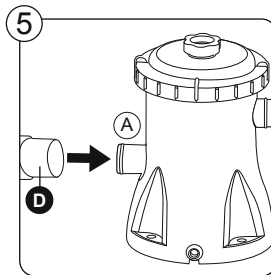
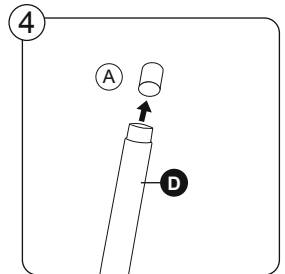
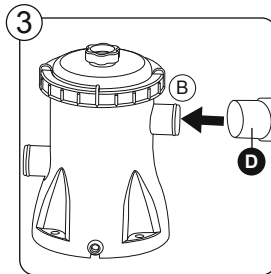
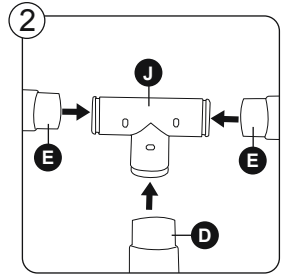
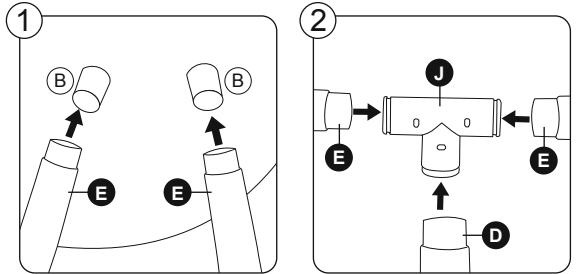
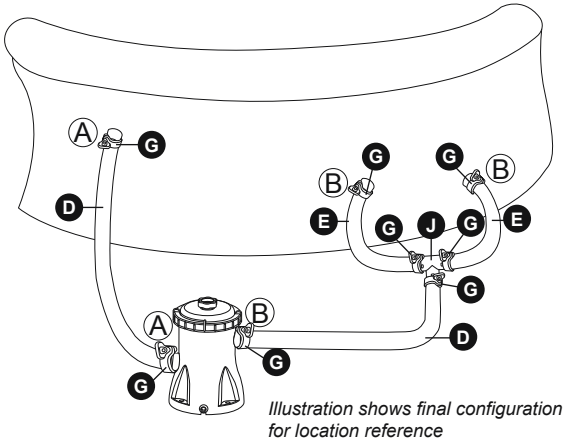


For installation instructions, follow the illustrations below. Drawings are for illustration purposes only. May not reflect actual product. Not to scale. Bestway is not responsible for damage caused to the product due to mishandling or failure to follow these instructions.

Filter Pump & Pool Connection Instructions



Pools with 32 mm A and B inlet/outlet valves:

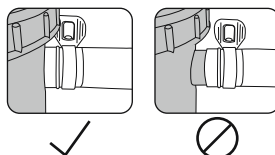


1. Attach one end of each **Connection Hose (E)** to the pool's B outlet valves.
2. Attach the other end of each **Connection Hose (E)** to the **T-Joint (J)**. Then attach one end of the **Pump Hose (D)** to the **T-Joint (J)**.
3. Attach the other end of the **Pump Hose (D)** to the filter pump's B port.
4. Attach one end of the **Pump Hose (D)** to the pool's A inlet valve.
5. Attach the other end of the **Pump Hose (D)** to the filter pump's A port.
6. Replace the pool's A inlet valve water stopper with the **Pool Inlet Strainer (H)**.
7. Replace the pool's B outlet valve water stoppers with the **Pool Outlet Strainers (I2)**.
8. Use the **Hose Clamps (G)** to secure the connection between the **Connection Hoses (E)** and the pool's B outlet valves and the **T-Joint (J)**, the connection between the **Pump Hose (D)** and the pool's A inlet valve, and the connection between the **Pump Hoses (D)** and the filter pump's A/B ports.



Helpful Tip: We recommend tightening the clamps between the ridges and the end of the hose.

9. Perform the [Air Discharging Operation](#) (see page 9).



INSTALLATION INSTRUCTIONS



Air Discharging Operation

Follow these steps to let all the air out of the inside of the pump before turning it on and after all maintenance operations. Skipping this step will greatly affect the lifespan of the product.

NOTE: It is important to perform the Air Discharging Operation before turning the pump back on after all maintenance operations.

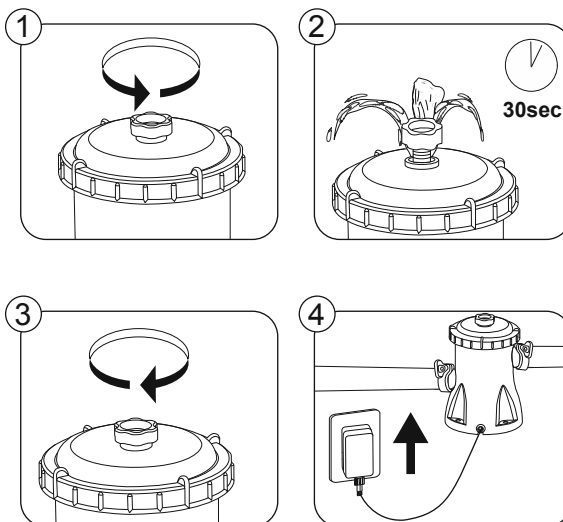
1. Open the Air Discharging Valve on the top of the Filter Pump by turning it counterclockwise.
2. Allow the product to release air until you see water start to come out of the valve (approximately 30 seconds).
3. Close the Air Discharging Valve by turning it clockwise to the end.
4. Connect the Filter Pump to the power supply. The product is now ready for use.



Helpful Tip:

IMPORTANT: Do not dry run the filter pump. Make sure both the pool's inlet and outlet are open and fully covered by water. Before switching on the filter pump, perform the Air Discharging Operation as shown.

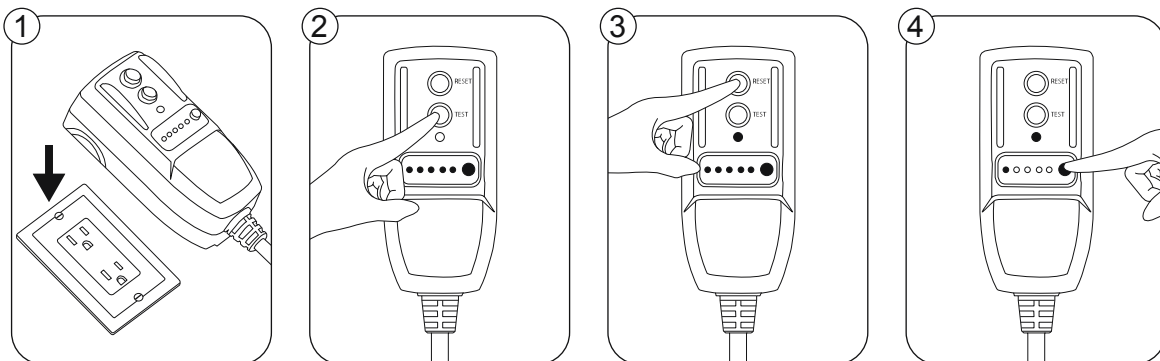
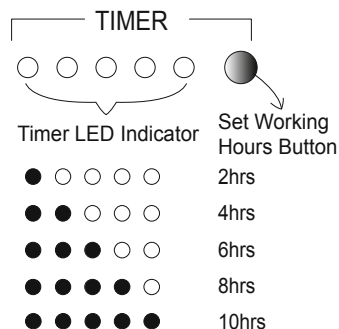
IMPORTANT: It is imperative to check that the hydraulic connectors are not obstructed.



GFCI TEST

Each LED indicator represents 2 hours of working time. You can push the Set Working Hours Button to adjust the desired time.

- After setting the run time, the pump will restart automatically at the same time the following day.
- In case of a power outage or the GFCI being unplugged, the running time of the product will be reset to a 10 hour default and the previous set will be deleted.
- After finishing the working time, the GFCI goes into stand-by mode. During this time, all LED indicators will be off.
- Pushing the test button on the GFCI does not stop the timer. To stop the timer, you have to unplug the GFCI.



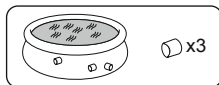
MAINTENANCE INSTRUCTIONS



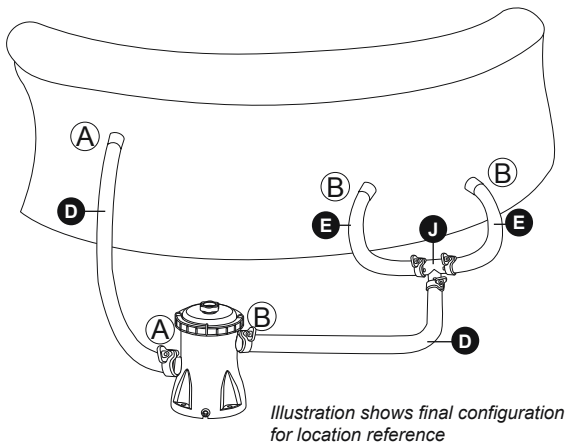
For cleaning and maintenance, refer to the illustration steps. Drawings are for illustration purposes only. May not reflect actual product. Not to scale.

CAUTION: You must ensure the filter pump is turned off and unplugged before beginning any maintenance actions or there is a severe risk of injury or death.

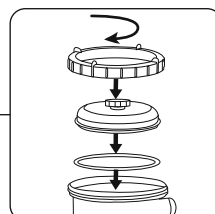
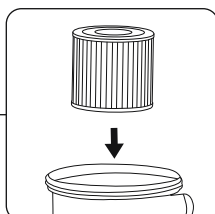
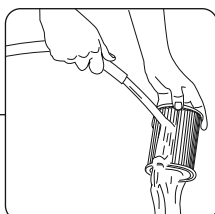
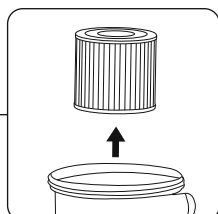
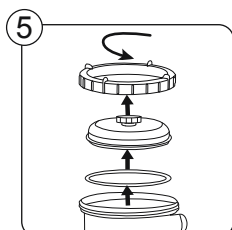
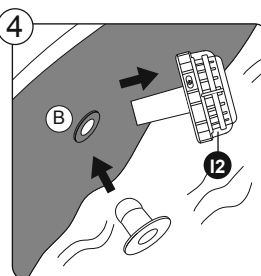
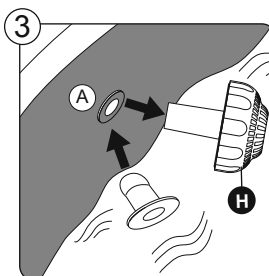
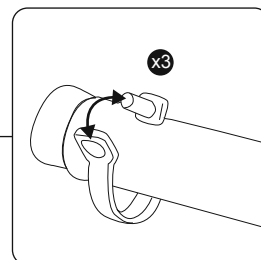
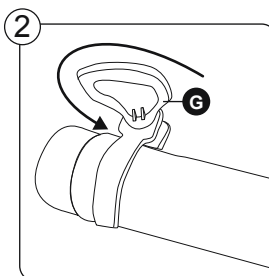
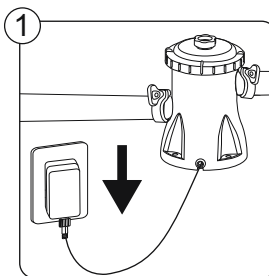
To optimize the filter pump performance and for sanitary reasons, we suggest replacing the filter cartridge with a new one every two weeks.



Pools with 32 mm A and B inlet/outlet valves:



1. Disconnect the filter pump from the power supply.
2. Open the **Hose Clamps (G)** to loosen the connection between the **Connection Hoses (E)** and the pool's B outlet valve, and the connection between the **Pump Hose (D)** and the pool's A inlet valve.
3. Replace the **Pool Inlet Strainer (H)** in the pool's A inlet valve with the water stopper.
4. Replace the **Pool Outlet Strainers (I2)** in the pool's B outlet valves with the water stoppers.
5. To clean the filter cartridge, open the filter pump following the given sequence. Remember to put all parts back after cleaning.
6. Refer to the [Installation Instructions](#) section of the corresponding pool type for reassembling the pump.



DISASSEMBLY & STORAGE INSTRUCTIONS



Remove all accessories; be sure that the filter pump, hoses and debris screens are completely clean and dry before storage. If all the parts are not completely dry, mold may result. Before storage, remove and dispose of the filter cartridge.

We strongly recommend disassembling the filter pump when the ambient temperature is below 50°F / 10°C.

Store the filter pump in a dry place with a moderate temperature between 50°F / 10°C and 100°F / 38°C.

WARRANTY INFORMATION

For support and product registration, please visit bestwayusa.com/support.

Bestway | LIMITED WARRANTY

Bestway (Hong Kong) International Ltd. (“Bestway”) warrants to the original end-user purchaser in the United States and Canada that the products identified in the table below (“Products”) will be free from manufacturing defects for the warranty period identified for the Product in the table below. The warranty period begins on the date of purchase or the date of delivery of the Product to the original, end-user purchaser, whichever is later.

Because Bestway cannot control the quality of Products sold by unauthorized sellers, this warranty applies only to Products that were purchased from Bestway or a Bestway authorized seller in the United States and Canada, unless otherwise prohibited by law. Bestway reserves the right to reject warranty claims for Products purchased from unauthorized sellers, including unauthorized Internet sites.

This warranty does not cover any damage or defects due to:

- normal wear and tear;
- misuse, including use outside of the owner’s manual guidelines;
- alteration to the product by the end-user or any third party;
- improper storage or handling, including storage or handling not in accordance with the technical recommendations in the owner’s manual;
- negligence.

Bestway will repair or replace the damaged or defective part(s) only. Bestway will not repair or replace the complete set.

Purchasers of Products who wish to make a warranty claim based upon a Product defect should complete the warranty claim form found at <https://www.bestwayusa.com/ourwarranties>. You will be required to submit proof of purchase from an authorized seller. This warranty does not cover Products purchased as used or “second hand as is”. Bestway reserves the right to request additional information in order to process a warranty claim, including, but not limited to, Product serial numbers or photos of the Product or parts. You may also be required to the return of the Product or certain parts for additional testing or to otherwise assist in processing your claim.

There are no warranties which extend beyond those stated herein. ANY IMPLIED WARRANTIES THAT MAY BE APPLICABLE TO PRODUCTS, INCLUDING IMPLIED WARRANTIES OF MERCHANTABILITY OR FITNESS FOR A PARTICULAR PURPOSE, ARE LIMITED IN DURATION TO THE DURATION OF THE APPLICABLE EXPRESS WARRANTY PERIOD DESCRIBED HEREIN. UNDER NO CIRCUMSTANCES SHALL BESTWAY BE LIABLE FOR ANY SPECIAL, INCIDENTAL, OR CONSEQUENTIAL DAMAGES BASED UPON BREACH OF THIS LIMITED WARRANTY, BREACH OF CONTRACT OR STRICT LIABILITY. Some States do not allow limitations on how long an implied warranty lasts, or the exclusion or limitation of incidental or consequential damages, so the above limitations or exclusions may not apply to you.

This warranty gives you specific legal rights, and you may also have other rights which vary from State to State.

If you have any questions about whether a seller is authorized or any other questions regarding this warranty, the warranty period, the warranty claim process or the status of a warranty claim, please contact us through the form at <https://bestwayusa.com/support> or write us at: Bestway Customer Service – 3435 S. McQueen Road – Chandler, AZ 85286



**WE SUGGEST NOT TO RETURN
THE PRODUCT TO THE STORE**

QUESTIONS? PROBLEMS? MISSING PARTS?
For FAQ, manuals, videos or spare parts, please visit
bestwayusa.com/support



Please visit
BestwayUSA.com

