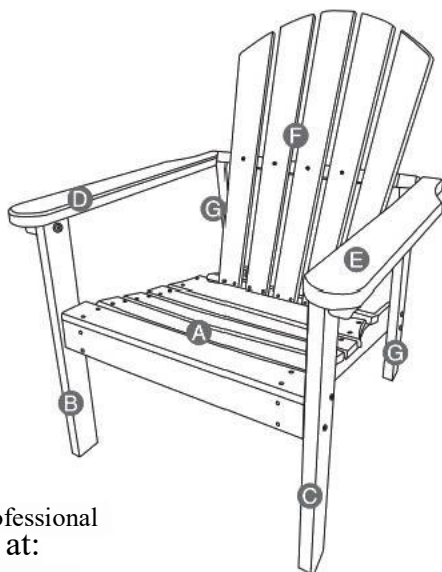


IMPORTANT

RETAIN FOR FUTURE REFERENCE

READ CAREFULLY

ASSEMBLY INSTRUCTIONS

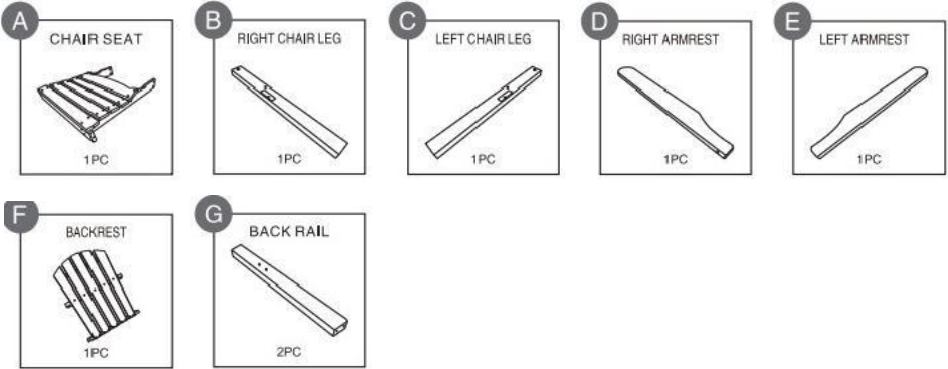


Contact our professional
customer support at:
mwoutdoors@outlook.com

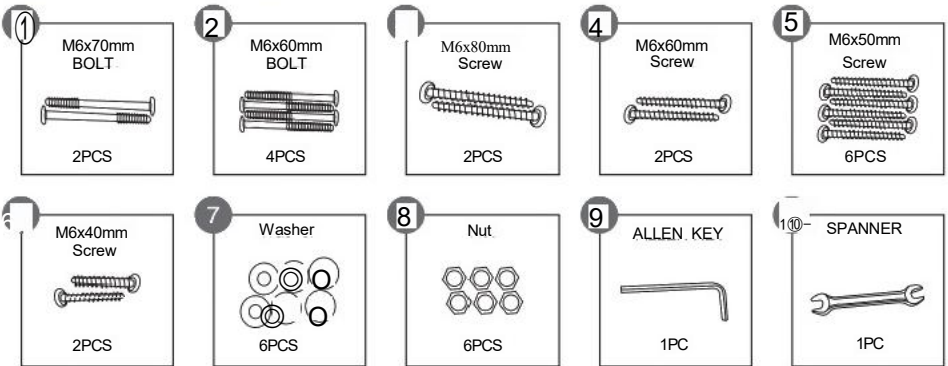
Note:

1. Do not use an electric screwdriver.
2. This item requires two people to assemble. Make sure to assemble it on a flat, solid, and even surface.
3. Before starting the assembly, make sure all necessary parts are included in the box.
4. Secure all parts and bolts loosely. Only after the frame is complete should you fully tighten the screws.
5. If any instability occurs, loosen the screws, re-align the components as necessary, and retighten the screws evenly.
6. This item is not intended to be used as a climbing frame or toy.
7. Warning: Danger of suffocation. Keep out of reach of children.
8. Caution: Be very careful when folding the chair to avoid injuring your hands or fingers.

Parts List



Hardware List



Note :

Before beginning assembly of product, make sure all parts are present. Compare parts with package content list. If any part is missing or damaged, do not attempt to assemble the unit.

Contact customer service for replacement parts.

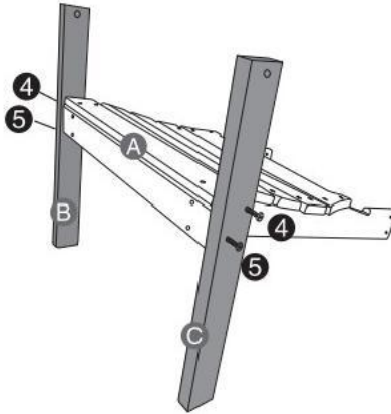
Customer service:

Contact our professional customer support at

patioproyoung@gmail.com

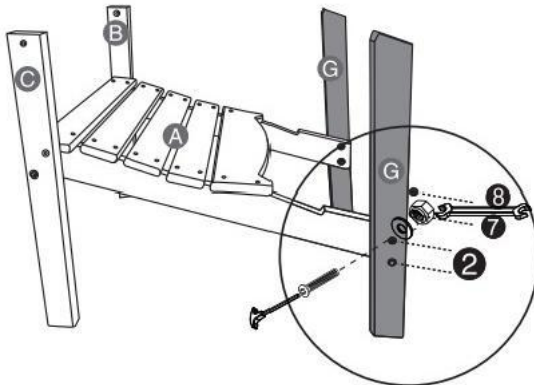
1、 Align the groove of part B(right front leg)and partC(left front leg)with the front end of part A(seat plate)as shown in the diagram.Fix them using hardware ④(M6*60mm Screw)and hardware ⑤(M6*50mm Screw).

Attention:Hardware④is screwed into the upper pre drilled hole,while hardware⑤is screwed into the lower pre drilled hole.

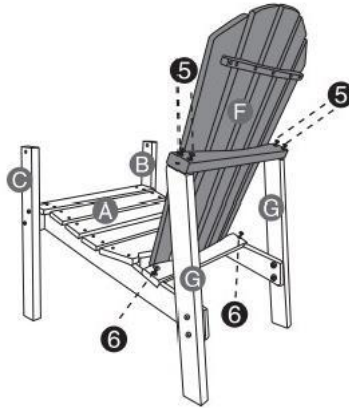


2、 Connect two part G to the back of part A using hardware②(M6* 60mm bolt),hardware⑦(washer)and hardware⑧(NUT).

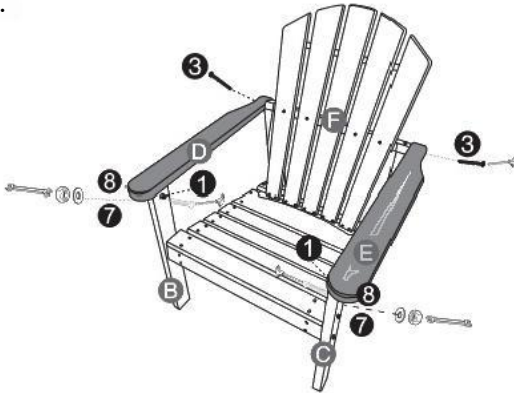
Attention:Pay attention to the direction of part G during installation. It shall be exactly the same as the diagram shows.



3、 Fix the upper part of part F(backrest)to the upper end of part Gusinghardware⑤(M6*50mm Screw),and the lower part to part A(seat plate)using hardware⑥(M6*40mm Screw).



4、 Fix the front part of part D(right armrest)to the upper end of part Businghardware①(M6*70mm Bolt),⑦(washer), and ③(NUT),and the rear part to part F(backrest)using hardware ③(M6*80mm Screw).Perform the same operation on part Eaccording to the matching position shown in the diagram.



5、 Congratulations on completing the assembly of the Adirondack chair.For safety reasons,please check and fully tighten all hardware before use.