

PYRANTEL PASTE

(pyrantel pamoate)

Equine Anthelmintic

durvet
www.durvet.com

Apple Flavored!

Indications:

For the removal and control of mature infections of large strongyles (*Strongylus vulgaris*, *S. edentatus*, *S. equinus*); small strongyles; pinworms (*Oxyuris equi*); and large roundworms (*Parascaris equorum*) in horses and ponies.

Ingredients:

Each syringe contains: pyrantel pamoate.....3.60 grams

Product Advantages:

- More concentrated than Pfizer's Strongid® Paste, smaller volume (3.6g/ 15.9mL vs. 3.6g/ 20mL) of paste for same dose of pyrantel pamoate.
- Easily administered paste-gel.
- Replaceable cap preserves partial dosages.
- Safe and efficacious.
- Can be administered to foals as young as 2 months of age.
- Safe to administer to pregnant mares 1 month before foaling
- May be given to nursing mares 10 days after foaling.

Dosage & Administration:

Administer as a single oral dose of 3 milligrams pyrantel base per pound of body weight. The syringe has four weight mark increments. Each weight mark indicates the recommended dose for 300 pounds of body weight. One syringe contains sufficient paste to treat one 1,200 lb. horse at the recommended dose.

Packaging:

23.6 gram syringe UPC# 7-45801-07977-9

Shelf Display contains 12 syringes, 3 displays (36 syringes) per case
Display UPC# 7-45801-77977-8, Case UPC# 7-45801-87977-5

Bulk Refill Shipper contains 100 syringes, 1 bulk shipper per case
Case UPC# 7-45801-87979-9



PYRANTEL PASTE

(pyrantel pamoate)

Equine Anthelmintic

durvet
www.durvet.com

For maximum control of parasitism, it is recommended that foals (2-8 months of age) be dosed every 4 weeks. To minimize the potential source of infection that the mare may pose to the foal, the mare should be treated 1 month prior to anticipated foaling date followed by re-treatment 10 days to 2 weeks after birth of foal. Horses and ponies over 8 months of age should be routinely dosed every 6 weeks. It is recommended that severely debilitated animals not be treated with this preparation.

ADMINISTRATION: After removing the cap, the paste should be deposited on the dorsum of the tongue. Introduce the nozzle end of the syringe at the corner of the mouth. Direct the syringe backwards and depress the plunger to deposit the paste onto the tongue. Given in this manner, it is unlikely that rejection of the paste will occur. Raising the horse's head sometimes assists in the swallowing process. When only part of the paste has been used, replace the cap on the syringe nozzle.

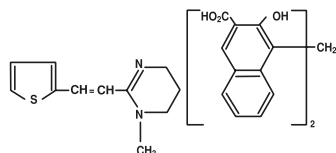
EFFICACY: Critical (worm count) studies in horses demonstrated that pyrantel pamoate administered at the recommended dosage was efficacious against mature infections of *Strongylus vulgaris* (>90%), *S. edentatus* (69%), *S. equinus* (>90%), *Oxyuris equi* (81%), *Parascaris equorum* (>90%), and *small strongyles* (>90%).

Pyrantel Paste (pyrantel pamoate) is a pale yellow to buff paste containing 43.9% w/w pyrantel pamoate in an inert vehicle. Each syringe contains 3.6 grams pyrantel base in 23.6 grams paste. Each milliliter contains 171 milligrams pyrantel base as pyrantel pamoate.

READ ENTIRE DIRECTIONS CAREFULLY BEFORE USING THIS PRODUCT

COMPOSITION: Pyrantel pamoate is a compound belonging to a family classified chemically as tetrahydropyrimidines. It is a yellow, water-insoluble crystalline salt of the tetrahydropyrimidine base and pamoic acid containing 34.7% base activity.

The chemical structure and name are given below.



Chemical Name:

(E)-1,4,5,6-tetrahydro-1-methyl-2-[2-(2-thienyl)-vinyl]-pyrimidine
4,4' methylenebis [3-hydroxy-2 naphtholate] (1:1)

INDICATIONS: For the removal and control of mature infections of large strongyles (*Strongylus vulgaris*, *S. edentatus*, *S. equinus*); small strongyles; pinworms (*Oxyuris equi*); and large roundworms (*Parascaris equorum*) in horses and ponies. Consult your veterinarian for assistance in the diagnosis, treatment, and control of parasitism.

DOSAGE AND TREATMENT: Pyrantel Paste (pyrantel pamoate) is to be administered as a single oral dose of 3 milligrams pyrantel base per pound of body weight. The syringe has four weight mark increments. Each weight mark indicates the recommended dose for 300 pounds of body weight.

| DOSAGE | | |
|-------------------|----------------|------------------|
| Body Weight Range | Quantity | mg Pyrantel Base |
| up to 300 lb | 1/4 syringe | 900 mg |
| 301 to 600 lb | 1/2 syringe | 1800 mg |
| 601 to 900 lb | 3/4 syringe | 2700 mg |
| 901 to 1200 lb | 1 full syringe | 3600 mg |

NOTE: Position ring-gauge over appropriate mark on plunger.

WARNING: Do not use in horses intended for human consumption.

RECOMMENDED STORAGE: Store at controlled room temperature 15°-30°C (59°-86°F).



OBSERVE LABEL
DIRECTIONS

Manufactured by: Bimeda-MTC Animal Health Inc.
Cambridge, Ontario, Canada N3C 2W4
Bimeda-MTC Animal Health Inc.
is a Division of Cross Vetpharm Group Ltd.
Distributed by: Durvet Inc.
Blue Springs, MO 64014
www.Durvet.com | www.AppleWormer.com
Rev. 04/11



DURVET, INC. ANIMAL HEALTH PRODUCTS

P.O. Box 279 • Blue Springs, Missouri 64014 • 800/821-5570 • 816/229-9101

Fax 816/224-3080 • E-mail: info@durvet.com • www.durvet.com

081817