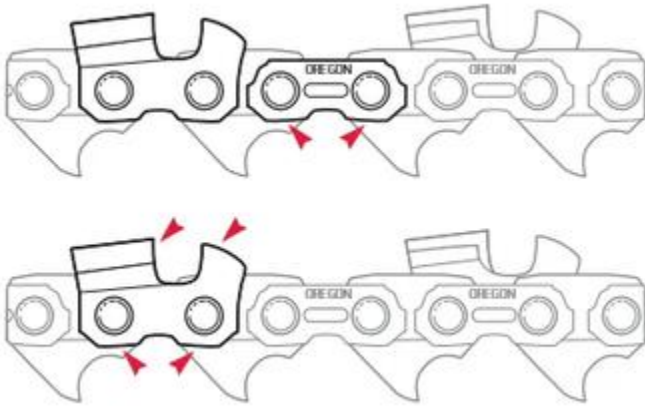




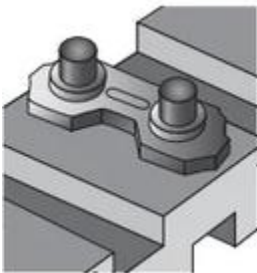
How to Install New Saw Chain Parts

Note: Use only Oregon® parts to repair Oregon® saw chain and only use parts which are the correct size and type for your saw chain.

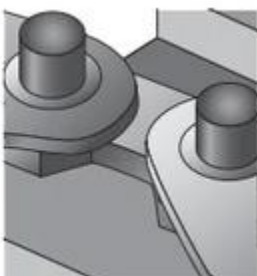
1. Remove rivets, and parts to be replaced. Never reassemble a saw chain with old preset tie-straps — always use new preset tie-straps.
2. If needed, file off bottom of new parts to match existing worn parts. File new cutters back to match worn cutters. Do not file the tops of kickback reducing bumper tie-straps or bumper drive links.



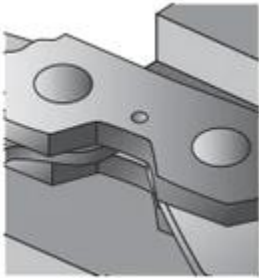
3. Place the preset tie-strap on a flat outer surface of a saw chain breaker anvil. Be sure the rivets are pointing up.



4. Assemble saw chain to the preset tie-strap.



5. Assemble tie-strap with landmark, dot face up, and the notch toward the drive link tangs. Assemble bumper tie-strap in the correct direction, with the notch toward the drive link tangs.
6. Be sure parts are assembled in the correct location, sequence and direction.



7. To form rivet heads, use an Oregon® rivet spinner.

⚠ WARNING: Rivet heads must be snug and secure while still allowing all joined parts to move freely. Rapid wear leading to possible saw chain breakage and personal injury can be caused by rivet heads that are either too tight or too loose.

Note: New rivet heads may be smaller and shaped differently than factory-spun heads.