



# Important Steps to Treating Your Pond

### 1. Calculate Your Pond Size:

Length x width (in feet) divided by 43,560.(43,560 is the number of square feet in an acre).  
If your pond is: 200' x 100' = 20,000'  
20,000/43,560 = .46 so your pond is almost a half acre.

### 2. Calculate Average Depth

Take multiple depth measurements around your pond (in feet). Add all of your depth measurements up and divide by the number of measurements you took to get your average depth. For example, if your depth measurements are 0,2,2,3,4,5,5,8,10,11,15,0 the sum of all these measurements is 65'. 65'/12 measurements = an average of 5.4'



### 3. Properly Identify Your Growth

This is one of the most important steps. If you do not identify your growth properly you will most likely buy a product that will not control the growth. Some algae, like chara, are mistaken for weeds and treated with an herbicide instead of an algaecide. This can be very frustrating and a waste of time and money. Visit our pond plant id page [www.pondplantid.com](http://www.pondplantid.com) or contact your local DNR; they may be able to help identify your growth.

-  [contacts@sancoindustries.net](mailto:contacts@sancoindustries.net)
-  888-697-2626
-  260-426-3922
-  1819 S. Calhoun St.  
Fort Wayne, IN 46802

## STEP BY STEP Complete Pond Care

Large or Small We Treat Them All!

## Crystal Blue

- Enhances the color of your pond or lake all year.
- 100% safe, no irrigation or swimming restrictions.
- 1 gallon treats 1 surface acre, 4-6ft. deep.
- Reapply approximately every 30 days.
- Apply February - November.

## Natural Pond Cleaner

- Safely breaks down muck and dead vegetation.
- 100% safe, no irrigation or swimming restrictions.
- 1 gallon treats 1 surface acre, 4-6ft. deep.
- Reapply approximately every 30 days.
- Apply when water temperatures are above 50°F.

Step1

## Crystal Plex

- 100% safe, no irrigation or swimming restrictions.
- 1 gallon treats 1 surface acre, 1-2ft deep.
- Treat 1/3 to 1/2 of pond at a time.
- Not for use in koi, goldfish, or trout ponds.**

Step3

## Catt Plex

- Kills emerged weeds down to the root.
- Shoreline and surface contact aquatic herbicide.
- See label for mixing instructions.
- Use Plex Mate for best results.

Step5

Step2

## Tsunami DQ

- Kills surface and submerged weeds.
- Effective in controlling Duckweed.
- See label for restrictions and complete application instructions.

Step4

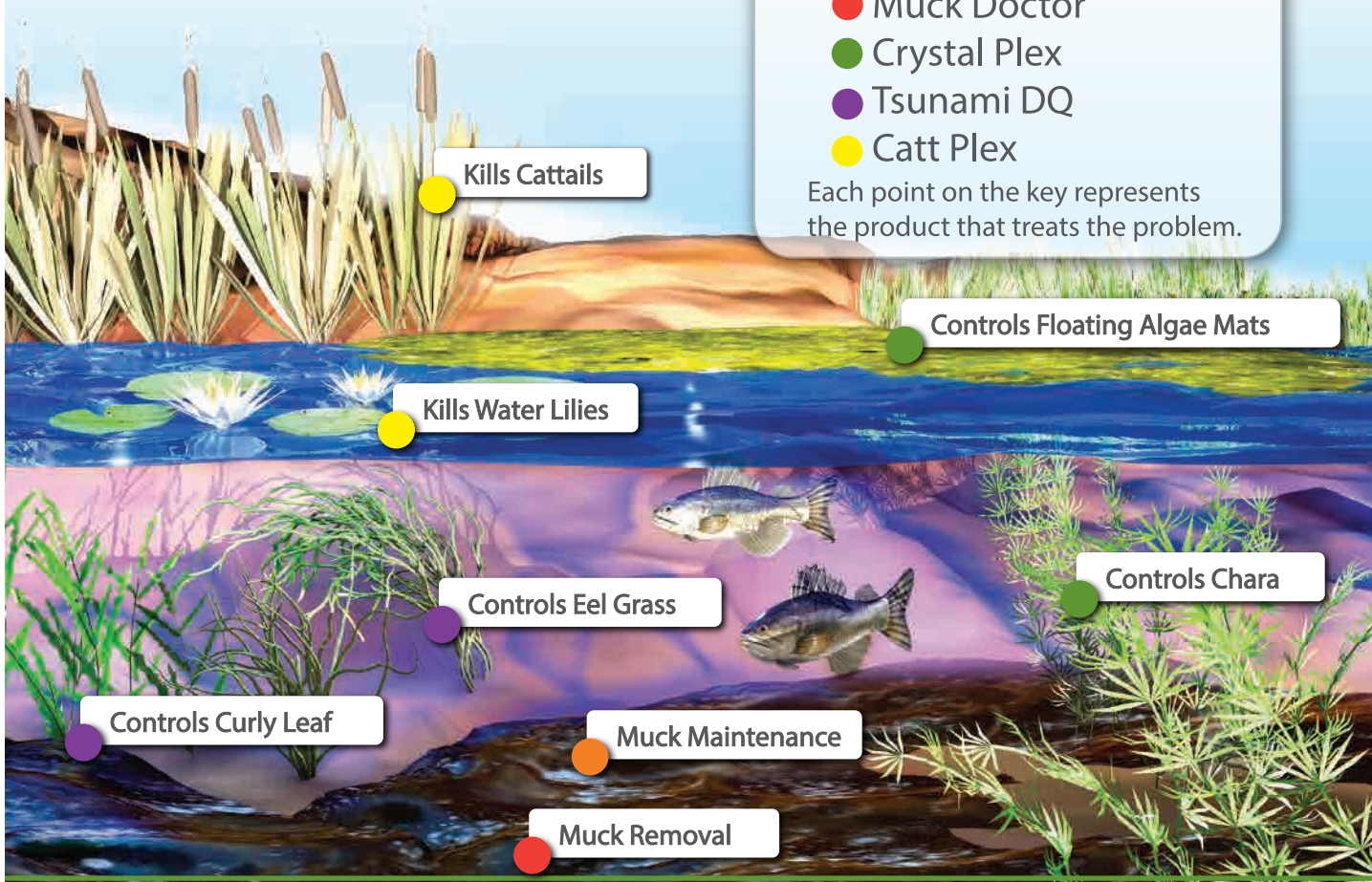
## Plex Mate

- Non-ionic surfactant that helps algacides & herbicides stick to the plant.
- Use simultaneously with Crystal Plex, Tsunami DQ, and CattPlex.
- 8oz. makes 25 gallons of spray solution.
- See algacide/herbicide label for more directions.

**Key**

- Natural Pond Cleaner
- Muck Doctor
- Crystal Plex
- Tsunami DQ
- Catt Plex

Each point on the key represents the product that treats the problem.



Kills Cattails

Kills Water Lilies

Controls Eel Grass

Controls Curly Leaf

Muck Maintenance

Muck Removal

Controls Floating Algae Mats

Controls Chara

## Muck Doctor **Aggressive Muck Remover**

- Muck Doctor is a concentrated form of bacteria that will consume muck from your pond floor in target areas.
- Fast Acting Concentrated Bacteria.
  - Use to target problem areas like beach and dock areas.
  - 10 spikes per box.
  - 1 box treats a 250 sq. ft. area.

## Fountain Systems

- 3 spray patterns included with all models.
- 1/2HP 115V: 15' high x 30' in diameter
- 1/2HP 230V: 15' high x 30' in diameter
- 3/4HP 230V: 22' high x 32' in diameter
- 1HP 230V: 24' high x 46' in diameter



## Aeration Systems

- 1/4 acre - CB40
- 1/2 acre - CB60
- 1 acre - CB80
- 2 acres - CB120

