

Motor Shaft Seal Replacement

Replacing the shaft seal included in this kit changes the chemical compatibility of the pump. The new shaft seal allows you to use this pump with B100 fuel. B100 fuel requires a minimum temperature of 40° F.

In addition to the standard instructions on the front page, please note the following when installing the new Motor Shaft Seal:

NOTE: In order to preserve the UL Listing or CSA Certification for pump safety, return the entire pump to GPI for motor repair. If the motor is removed from the pump or serviced outside of the factory, the UL and CSA labels mounted on the pump housing must be removed or defaced to indicate loss of UL Listing or CSA Certification.

1. Remove the gear coverplate, gears, and drive key. Remove the three screws holding the motor to the pump housing. Remove the motor.
2. Remove the motor shaft seal by prying it out with a small screwdriver.
3. Lubricate the gear shaft with WD-40® or a similar penetrating oil.
4. Press the new motor shaft seal evenly in the pump housing until seated. Use a lightweight motor oil to lubricate the exposed edge of the seal.
5. Install the motor, guiding the shaft through the seal and into the pump housing. Make sure that the motor is flush against the pump housing and the coverplate.
6. Tighten the motor to the pump housing with the three screws. Check for proper installation by working a 0.0015 feeler gauge around the motor flange. The gauge should NOT fit between the motor flange and the pump housing.
7. Clean the gear cavity as necessary. Insert the gears and drive key. Make sure both gears rotate freely.
8. Make sure the gear coverplate O-ring is seated correctly and tighten the coverplate to the pump housing.

Instruction Sheet for Electric Gear Pump Conversion & Overhaul Kit

The contents of this kit are listed inside.

WARNING!

To avoid personal injury, turn pump off and disconnect power before removing any coverplates.

Standard Instructions for Seal Replacement

To replace most seals in this kit, follow these standard directions.

1. Remove the appropriate coverplate.
2. Remove the old O-ring seal taking care not to damage other parts.
3. Lightly oil the new O-ring.
4. Make sure the O-ring is seated correctly and tighten the coverplate.

Bypass Poppet Seal Replacement

In addition to the standard instructions above, please note the following information when installing a new O-ring seal on the bypass poppet.

1. After removing the gear coverplate, use a 1/2-inch drive ratchet or extension to remove the pipe plug from the top outlet port.
2. Depress the bypass poppet with a socket wrench extension until the bypass poppet O-ring is exposed inside the gear cavity.
3. Using a small screwdriver or similar tool, remove the old O-ring.
4. Reverse the above steps to install the new O-ring. Make sure the new O-ring is well-seated in the poppet groove. If installed correctly, the poppet should move up and down freely with medium pressure.
5. Seal the pipe plug with thread tape or a sealing compound approved for use with petroleum fuels.

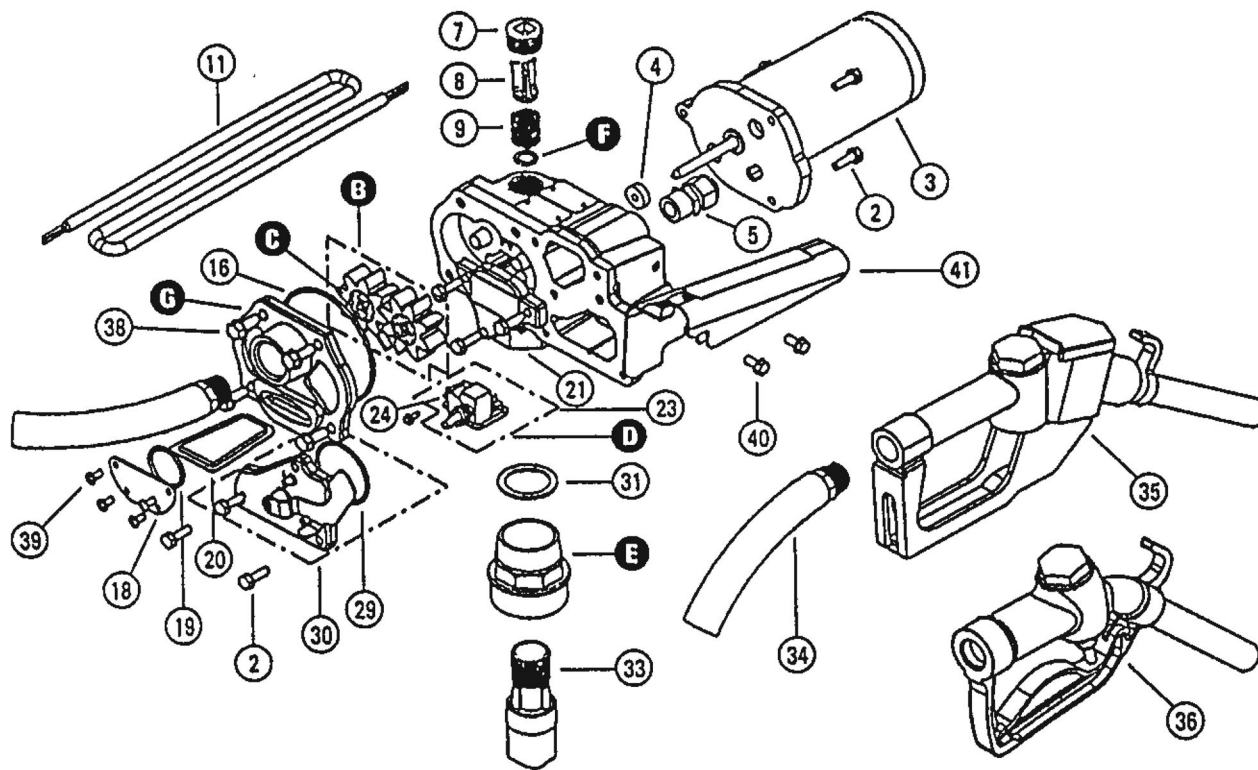
Gear and Drive Key Replacement.

Please note that worn gears are indicated by reduced pump performance. During installation, make sure the new gears rotate freely before tightening the coverplate.

 5252 East 38th Street North
Wichita, KS USA 67220-3205
TEL: 316-686-7361
FAX: 316-686-6746

GREAT PLAINS INDUSTRIES, INC.
"A Great Plains Ventures Subsidiary"
www.GPIpumps.net

Electric Gear Pump Exploded Parts Drawing



Overhaul Kit Contents

Bypass Poppet SealItem F
 Switch Coverplate SealItem 29
 Strainer Seal.....Item 19
 Gear Coverplate Seal.....Item 16
 Motor Shaft Seal.....Item 4
 Gears.....Item B
 Drive Key.....Item C

Note: This drawing is provided to illustrate the Overhaul Kit only. It may not accurately reflect all other parts in your particular pump.