



# 4400-lb Pallet Truck

## OWNER'S MANUAL



### **WARNING:**

Read carefully and understand all **ASSEMBLY AND OPERATION INSTRUCTIONS** before operating. Failure to follow the safety rules and other basic safety precautions may result in serious personal injury.

**Item# DB-4400LB**

Thank you very much for choosing this product! For future reference, please complete the owner's record below:

Model: DB-4400LB Purchase Date: \_\_\_\_\_

Save the receipt, warranty and these instructions. It is important that you read the entire manual to become familiar with this product before you begin using it.

This product is designed for certain applications only. The manufacturer cannot be responsible for issues arising from modification. We strongly recommend this product not be modified and/or used for any application other than that for which it was designed. If you have any questions relative to a particular application, DO NOT use the product until you have first contacted us to determine if it can or should be performed on the product.

For technical questions please call **1-218-943-6296**.

## TECHNICAL SPECIFICATIONS

Item	Description
Capacity	4400 lbs
Fork Dimensions	27in x 48in
Dimensions	62.5in x 45.5in x 27in

## GENERAL SAFETY RULES



**WARNING:** Read and understand all instructions. Failure to follow all instructions listed below may result in serious injury.



**CAUTION:** Do not allow persons to operate or assemble this pallet truck until they have read this manual and have developed a thorough understanding of how the pallet truck works.



**WARNING:** The warnings, cautions, and instructions discussed in this instruction manual cannot cover all possible conditions or situations that could occur. It must be understood by the operator that common sense and caution are factors which cannot be built into this product, but must be supplied by the operator.

## SAVE THESE INSTRUCTIONS

## WORK AREA

- **Keep work area clean**, free of clutter and well lit. Cluttered and dark work areas can cause accidents.
- **Keep children and bystanders** away while operating the pallet truck. Distractions can cause you to lose control, so visitors should remain at a safe distance from the work area.

## PERSONAL SAFETY

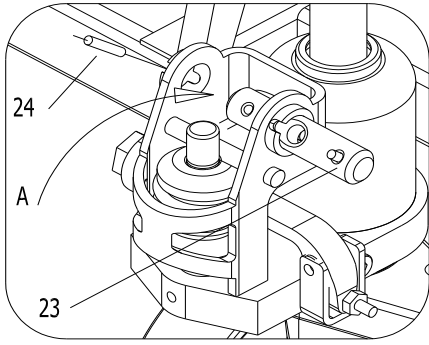
- **Stay alert**, watch what you are doing and use common sense when using a pallet truck. Do not use a pallet truck while you are tired or under the influence of drugs, alcohol or medication. A moment of inattention while operating a pallet truck may result in serious personal injury.
- **Dress properly**. Do not wear loose clothing, dangling objects, or jewelry. Keep your hair, clothing and gloves away from moving parts. Loose clothes, jewelry or long hair can be caught in moving parts.
- **Use safety apparel and equipment**. Use safety goggles or safety glasses with side shields which comply with current national standards, or when needed, a face shield. Use of a dust mask is recommended if working in dusty work conditions. Also use non-skid safety shoes, hardhat, gloves, dust collection systems, and hearing protection when appropriate.

## PALLET TRUCK USE AND CARE

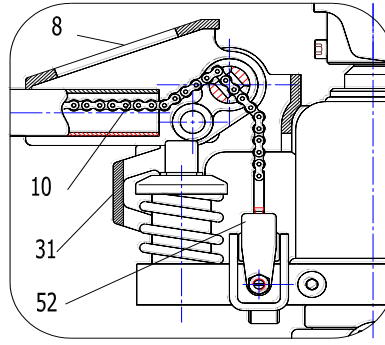
- **Do not modify the pallet truck in any way**. Unauthorized modification may impair the function and/or safety and could affect the life of the equipment. There are specific applications for which the pallet truck was designed.
- **Always check for damaged or worn out parts before using the pallet truck**. Broken parts will affect the pallet trucks operation. Replace or repair damaged or worn parts immediately.
- **Do not exceed the pallet trucks load capacity**.
- **Distribute the load evenly**. Uneven loads may cause the pallet truck to tip, resulting in personal injury to the operator or others.
- **Use the pallet truck on flat and level surfaces** capable of supporting the pallet truck and its maximum load. Pulling or pushing a load on a slanted or uneven surface can result in loss of control.
- **Store idle pallet truck**. When pallet truck is not in use, store it in a secure place out of the reach of children. Inspect it for good working condition prior to storage and before re-use.

## ASSEMBLY

1. Please refer to Figure 1, and pull out the pin shaft 23.

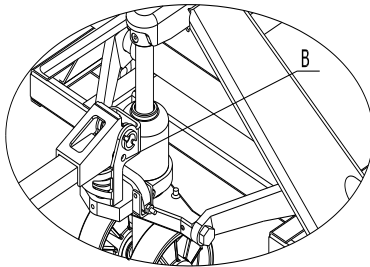


**Figure 1**

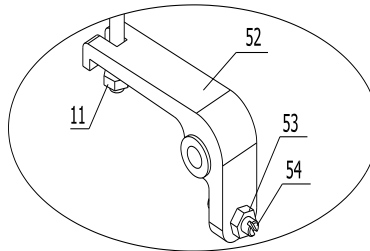


**Figure 2**

2. Insert Handle Tube into Position A. Connect Handle tube and the pump body 31 via the pin shaft 23.
3. Put the spring pin 24 through the pin shaft 23.
4. Cross the chain 10 of the Handle Tube through the hole of the pin shaft 23. Please refer to Figure 2.



**Figure 3**

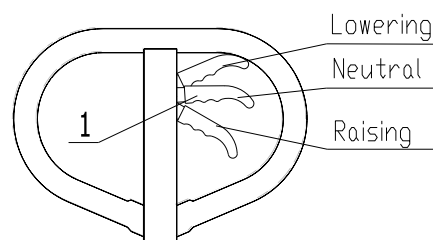


**Figure 4**

5. Put the screw and nut at the end of chain 10 into the slot of the lever plate. Please refer to Figure 2 and Figure 4.
6. Refer to Figure 3, raise the handle to a horizontal position, pull out pin B and store to be used for Handle replacement in the future. The pallet truck assembly is complete.

## Check before using

1. After the assembly is complete, move the Trigger (# 1, Figure 5, below) into the three different positions. This assures pallet operates lowering, neutral and raising operations correctly after assembling.
2. The Screw #54 in Fig. 4 is used for the adjustment of the truck. When the truck body lowers shortly after rising, turn Screw 54 a little in counterclockwise before trying the truck again. In the case that the truck body is unable to lower, turn Screw 54 a little in clockwise and then try the truck again till the truck is able to lower normally. The Hex nut 53 functions as a lock, so loosened before adjustment is made and lock after modification.



**Figure 5**

## OPERATION



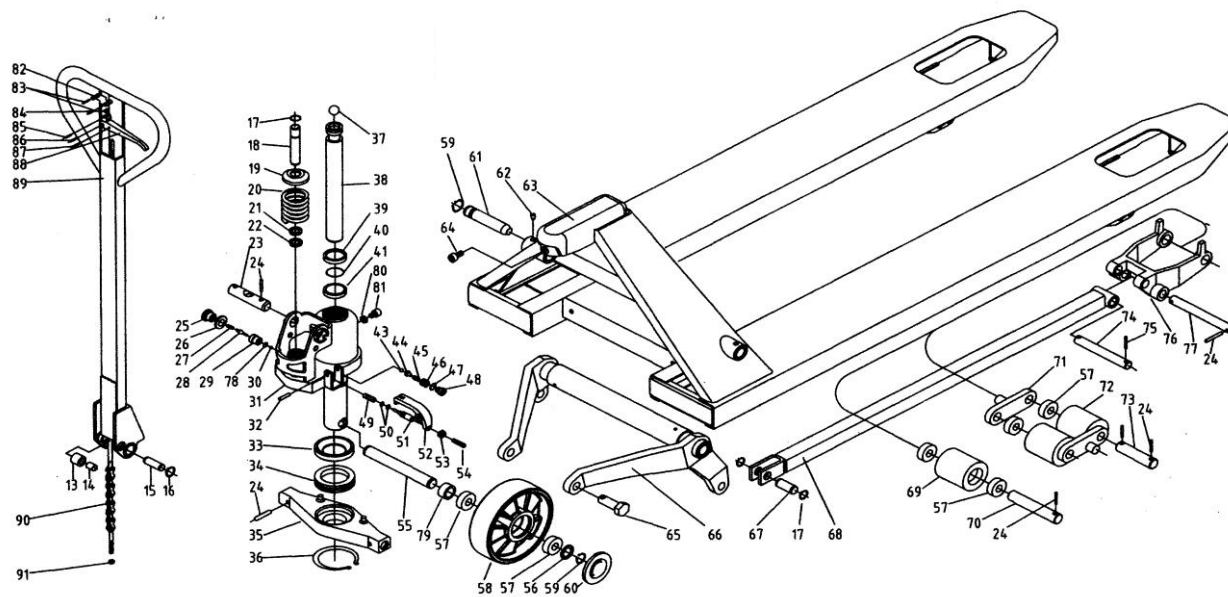
### **WARNING: Warning:**

1. Lift the Trigger up a little when lowering the truck by controlling the Trigger to make the truck lower slowly. Never drag the Trigger quickly because rapid descent will damage the truck and cargo!
2. Do not overload past capacity.
3. The gravity center of the goods should be positioned in the middle of two forks.
4. Do not use with loose or unstable cargo.
5. Do not place the cargo on the truck body for long time.
6. Set the forks at the lowest position when the truck not in use.
7. Pallet truck is not for carrying people or animals.
8. Do not stand on the forks while the truck is stationary or moving.
9. The truck is suitable for flat and hard ground.
10. Bring pallet truck to an authorized repair center only.

## MAINTENANCE

- **Maintain your pallet truck.** It is recommended that the general condition of any pallet truck be examined before it is used. Keep your pallet truck in good repair by adopting a program of conscientious repair and maintenance. If any abnormal vibrations or noise occurs, have the problem corrected before further use. Have necessary repairs made by qualified service personnel.

# DIAGRAM & PARTS LIST



NO	DESCRIPTION	QTY
82	BALDE SPRING	1
83	SPRING PIN	2
84	ROLLER	1
85	SPRING PIN	1
86	SPRING PIN	1
87	SPRING PIN	1
88	HANDLE	1
89	HANDLE TUBE	1
90	PULL POLE	1
91	NUT	1
13	PRESSURE ROLLER	1
14	BUSH	1
15	PIN	1
16	RETAINING RING FOR AXLE	1
17	RETAINING RING FOR AXLE	5
18	PUMP PLUNGER	1
19	COVER	1
20	SPRING	1
21	DUST RING	1
22	Y-RING	1

23	SHAFT	1
24	SPRING PIN	1
25	PLUG	10-16
26	COPPER WASHER	1
27	SPRING	1
28	SPINDLE OF DAMPING VALVE	1
29	SEAT OF DAMPING VALVE	1
30	STEEL BALL	1
31	BASE	1
32	SPRING PIN	1
33	BOWL WASHER	1
34	BEARING	1
35	SUPPORTING BASE	1
36	RETAINING RING FOR AXLE	1
37	STEEL BALL	1
38	PISTON ROD	1
39	DUST RING	1
40	O-RING	1
41	Y-RING	1
42	OIL PLUG	1
43	STEEL BALL	1
44	BALL BASE	1
45	SPRING	1
46	REGULATION SCREW	1
47	COPPER WASHER	1
48	PLUG	1
49	SPRING	1
50	O-RING	2
51	STRIKE PIN	1
52	LEVER PLATE	1
53	NUT	1
54	REGULATE SCREW	1
55	BIG WHEEL SHAFT	1
56	WASHER	10
57	BEARING	8-12
58	BIG WHEEL NYLON/ PU/RUBBER	2
59	RETAINING RING FOR AXLE	4
60	DUST COVER	2
61	SHAFT	2
62	BOLT	2

63	FORK FRAME	1
64	BOLT	1
65	PIN	2
66	ROCKER ARM	1
67	PIN	2
68	STRAIGHT TAPPET	2
69	FORK WHEEL (NYLON/PU)	2
70	SHAFT	2
71	NOG OF FORK WHEEL	4
72	FORK WHEEL (NYLON)	4
73	SHAFT	4
74	SHAFT	2
75	SPRING PIN	4
76	FRAME OF FORK WHEEL	2
77	SHAFT	2
78	O-RING	2
79	WASHER	2
80	O-RING	1
81	SCREW	1

For replacement parts and technical questions, please call **1-218-943-6296**.

## **WARRANTY**

**One-year limited warranty**



TG  
 PO Box 203  
 Miliona, MN 56354