

CUDDY[®] 40_{QT}

Owner's Manual

**AMPHIBIOUS
FLOATING
COOLER**
& DRY STORAGE VESSEL



FLOATING PARTY!





The Cuddy® is the result of hundreds of hours of R&D to develop the most versatile cooler and dry storage vessel in the world.

Engineered to perform in and out of the water, the Cuddy brings a whole new level of convenience to recreational water sports.

The Cuddy combines all of the features and conveniences of a modern cooler with the additional ability to be taken out on the water. The Cuddy's unsinkable design and hydrodynamic profile allow it to be towed, tethered or anchored in any body of water. Since we can't always be out on the water, the Cuddy® also works on land, making it an all-purpose outdoor accessory. Thank you for your support!

CUDDY® 40^{QT}

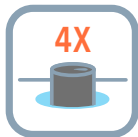
CUDDY® 40QT

Marine Grade Features



HANDY HATCHES™ DUAL LIDS

Easy access on both sides and center balance to resist tipping when opening lids on the water



4X CUP HOLDERS

Designed to fit standard size cozies and can insulators



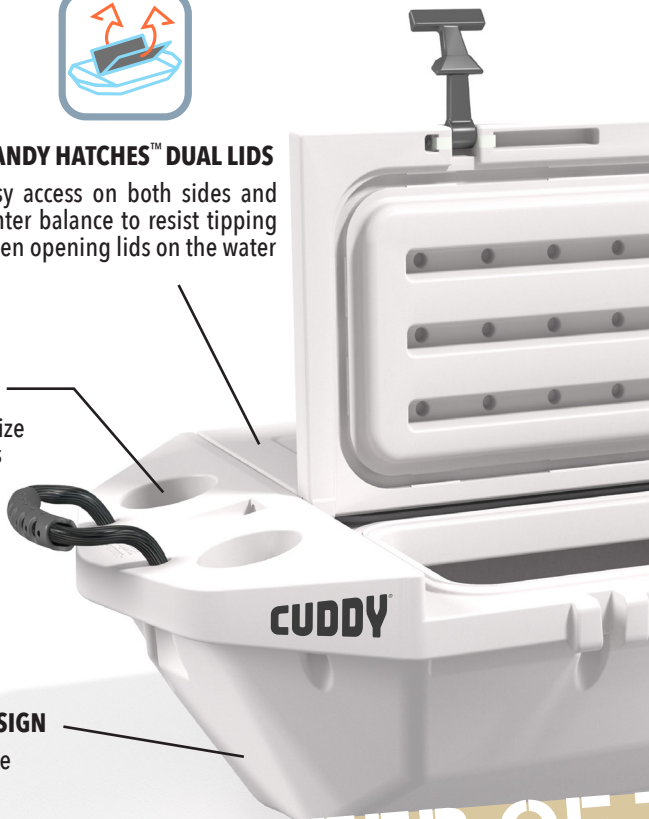
6' TOW STRAP w/ 2 CARABINERS

Tow behind a kayak, tube, SUP, etc. or anchor to a fixed point.



FLOW TOW™ HULL DESIGN

Hydrodynamic profile for efficient towing



PIONEER OF



4X T-LATCHES

Creates airtight seal for maximum insulation or dry locker use



DUAL WALLED WITH SNOW BEAD™ INSULATION

12-48 hour ice retention based on use and conditions



SURE FLOAT™ FLOATION

Unsinkable Design + Capsize Resistant



40 QT. CAPACITY
(30 cans + 20lb ice)

THE AMPHIBIOUS VESSEL!



CUDDY[®] 40QT

ON LAND &



CAMPING • FISHING • BEACH

WATER



KAYAK • SUP • BOATING



DRY STORAGE



**Wide Dual Lids
provide easy access for
all your food and drinks!**

CUDDY[®] 40^{QT}

POOL PARTY READY



CUDDY® 40QT

BE THE LI

O

THE PART



THE
F
Y!

ACCESSORIES

SOLD SEPARATELY



Cuddy® Cooler Grip Kit

Added grip and stability for boats, truck beds and other slick surfaces



Cuddy® Crawler™ Wheel Kit

Great for getting the Cuddy® from the car to the shore



ICE RETENTION



The Cuddy® is designed to retain ice for an average of 24 hours, but can vary based on use and conditions. The below steps will help maximize ice retention, but we recommend balancing the mix of ice vs drinks based on your needs.

KEEP THE LIDS CLOSED AND LATCHED: Keep both lids closed and latched when not retrieving food or drink. Avoid letting water spill into the Cuddy® as it will melt the ice.

LOAD APPROPRIATELY: Pack the right amount of ice for your mission. Same day trips/parties need less ice than overnight adventures.

KEEP THE MELTED ICE WATER IN THE CUDDY®: By not draining the ice water, you are keeping the Cuddy® colder and keeping potential empty spaces filled.

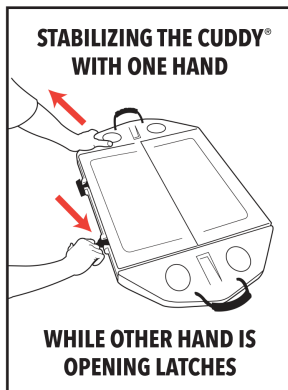
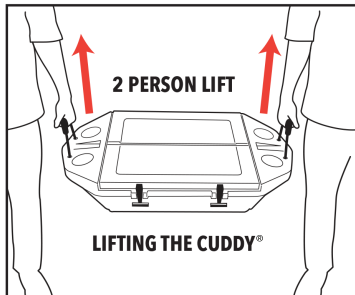
START WITH A COLD CUDDY®: Pre-cool your Cuddy® with a sacrificial bag of ice before packing your food and drink.

AVOID EMPTY SPACES INSIDE THE CUDDY®: Pack a layer of ice around all items for best results. Fill empty spots with more ice or towels.

LEAVE IN SHADE WHEN POSSIBLE: Store Cuddy® in a cool shaded area whenever possible.



User Tips



Care Instructions

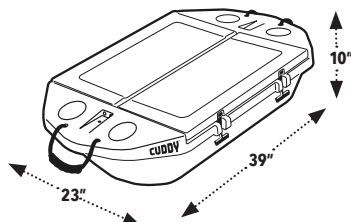
✓ Never drag or tow the Cuddy® on hard surfaces (concrete, asphalt, brick etc) as it can permanently damage the bottom hull.

✓ Clean and thoroughly dry the Cuddy® with the lids open before storing.

✓ Unlatch dual lids when storing to prevent edge of lids slightly warping.

Contact GoSports® Outdoors for replacement parts as needed: info@pandpimports.com

USER INFO



SIZE	39" x 23" x 10"
DRY WEIGHT	24.7 lbs.
CAPACITY	40 Quart



WARNINGS

- Not a flotation or life-saving device
- Adult supervision required
- For intended use only
- Do not stand or sit on the Cuddy®
- Dry and store when not in use



RISK OF CHILD ENTRAPMENT

Possible for children to be trapped inside and suffocate. Keep out of children's reach when not in use.

WARRANTY INFO

P&P IMPORTS LLC warrants its Products to be free from defects in material and workmanship for a period of six (6) months from date of delivery to the consumer. Please keep your original delivery receipt, as it will be required for any warranty claim. This warranty is not transferable and does not apply to merchandise purchased "as is" (i.e. floor samples or clearance center items). This warranty does not apply to P&P IMPORTS LLC goods purchased from a non-authorized P&P IMPORTS LLC dealer or reseller. Please follow all instructions regarding your Product, as failure to do so will void this warranty.

All claims must be directed to the P&P IMPORTS LLC retail dealer from whom the merchandise was originally purchased, along with original delivery receipt.

The following conditions apply to this Warranty except where prohibited by law:

1. The warranty is only valid to the original user/consumer.
2. This warranty only applies under conditions of normal usage and does not apply to defects or damage resulting from negligence, abuse or misuse, including but not limited to inadequate or improper maintenance, improper assembly, improper installation, improper cleaning, or exposure to chemicals and/or liquids, or fading caused by exposure to sunlight.
3. This warranty does not apply to any use for which the product was not designed.

4. Because of the craftsmanship and materials involved in the manufacturing process, minor differences and finish variations will occur from piece to piece. Therefore, this warranty does not cover those minor differences or finish variations, or any differences between floor samples, printed illustrations, Internet photos or other visual displays.

5. Any modification or alteration of P&P IMPORTS LLC products will void the warranty.

6. Under the terms of this limited warranty, P&P IMPORTS, LLC will either repair or replace the defective item. Repair or replacement is strictly at P&P IMPORTS LLC's discretion.

7. All warranty claims must initially be presented to the authorized P&P IMPORTS LLC retail dealer where the game was purchased. The dated proof of delivery and item serial number are required for warranty validation. If retailer is no longer in business, please contact us for assistance.

8. P&P IMPORTS LLC assumes no responsibility for incidental or consequential damages. Some states do not allow the exclusion or limitation of incidental or consequential damage, so these limitations may not apply to you.

9. P&P IMPORTS LLC is not responsible for transportation costs between the consumer and the P&P IMPORTS LLC retail dealer for warranty and repair issues.

10. If you have any questions concerning this warranty, please contact P&P IMPORTS LLC at info@pandpimports.com



Scan Now To
Activate Warranty



Designed and Imported by
P&P Imports LLC
Irvine, CA

www.GoSportsOutdoors.com
© 2022 P&P Imports LLC
All Rights Reserved

Pat.: www.pandpimports.com/patents

CUDDY[®] **40**_{QT}

CUDDY®

How to Replace Handles

Insert the rope handle ends through the top of the holes and tie off each end with a secure, weight bearing knot. We recommend having a ½ inch of slack.

Optional: For added security, wrap the knot with waterproof vinyl tape (not included).



ANY ISSUES?

Please reach out to us at Info@pandpimports.com so we can make things right. We stand behind our products!

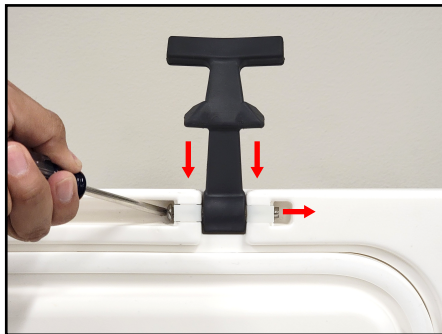
CUDDY®

How to Replace T-latches

1. With the lid open, use a flathead or other similarly pointed tool to push out the T-latch pin.



2. Line up the replacement T-latch with the pin hole and reinsert the pin all the way to secure it. The GoSports Outdoors® logo will be visible on the outside of the T-latch once installed.



ANY ISSUES?

Please reach out to us at Info@pandpimports.com so we can make things right. We stand behind our products!

CUDDY[®] 40_{QT}

ANCHOR KIT



**MUST HAVE
FOR SOCIAL
FLOATING ON
THE SANDBAR**

**Thank you for being an early Cuddy[®] adopter!
Enjoy your free Anchor Kit as our thanks for your support.**

Using the Anchor Kit

1. Fill the anchor with sand or rocks.
2. Clip one carabiner to the anchor strap.
3. Attach the other carabiner to the Cuddy®.

Now you're ready for social floating on the sandbar!

Care Instructions:

Clean with freshwater after use and dry fully before storing.

Warning:

- Check water depth before deploying.
- Do not use in water deeper than the length of the included 12 ft strap.
- Confirm nothing is caught in the strap before deploying. Then slowly lower into the water.
- Cuddy® may still drift around depending on the current.

