

WARNING & NOTICE

1. Do not look directly at the LED light, or it may damage your eyes.
2. Do not attempt to disassemble or remodel the product. Any changes can be dangerous and will void the warranty.
3. Please keep away from any flammable items, as explosion, property damages, or casual injuries may occur.
4. Please keep the solar panel clean to make sure the product can be properly charged. Frequently clean the solar panel as needed. Avoid scratching on the panel or it may lower charging efficiency.

PRODUCT SPECIFICATIONS

Material	ABS	Solar Panel	3.5*5.5 inches/ 1.0 W
Battery	Li-ion battery 18650 1800 mAh	Waterproof Rating	IP65
Size	3.9 x 6.3 x 11.4 inches	Accessories	2*Solar Spotlights 1*User Manual 2*Plastic Anchor 2*Plastic rod 2*Turn knob 4*Gecko Screws 4*Screws

This product has a 1-year limited warranty. For further information please visit our website at www.techkogroup.com

Copyright Reserved

☎ 1-888-883-2456

✉ support@techkogroup.com

Solar Spotlight

USER MANUAL

TECHKO[®]

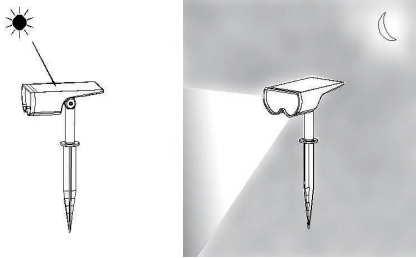
Model: SHL-921

▲ Please carefully read this manual before using the product.

▲ Keep the manual with you for reference as needed.

FULLY CHARGE BEFORE USE

Solar charging time may vary depending on weather conditions, temperature and seasons.



SOLAR CHARGING

▲ Charge the unit in the place where the solar panel can be continually exposed to the sun.

▲ Avoid placing the unit in the shade from buildings or objects which would block the solar panel while charging.

▲ The solar panel is equipped with a daylight sensor, so the product will automatically charge in daytime and light up at dusk or when the surroundings turn dark.

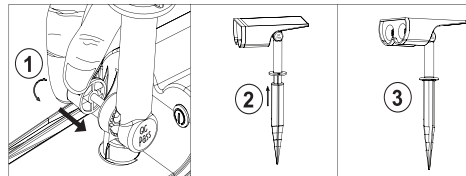
▲ The product can be charged in all operating modes.

Press the back button and select a desired mode. Then choose a place that can get enough sunshine to install the light, the more sunshine it gets, the longer it can illuminate.

Method 1: Ground Insert

① Connect the ground stake with the light. Then, adjust the angle of lamp holder and tighten the knob.

② Dampen soil to soften ground and insert the stake vertically into the ground.

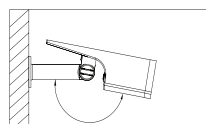
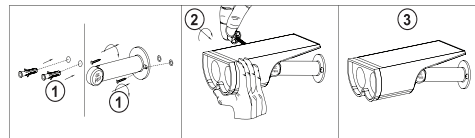


Note: Please insert the turn-knob from the correct side as shown above.

Method 2: Wall Mount

① Create two holes on the wall with a drill bit and insert the attached wall plugs into holes. Then, twist the screws through the screw holes of holder into the wall plugs.

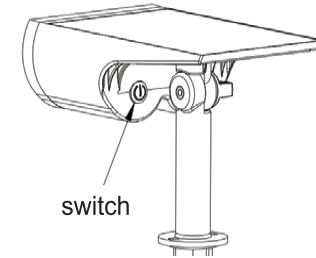
② Adjust the angle, then tighten the holder and the light through the knob screw. Adjustable Angle: horizontal 180°, vertical 90°



Note: Please insert the turn-knob from the correct side as shown above.

SWITCHES AND FUNCTIONS

The default mode of the product is OFF mode. Press the back button to adjust modes when using the light.



5 LIGHTING MODES

Press the power button on the back to cycle through the 4 lighting modes. Modes will cycle through based on the following sequence, with OFF being the last of the sequence.

Mode 1	Warm White Low Light Mode (3000K) Max working time: 24 hours continuous lighting
Mode 2	Warm White High Light Mode (3000K) Max working time: 12 hours of continuous lighting
Mode 3	Daylight White Low Light Mode (6500K) Max working time: 24 hours of continuous lighting
Mode 4	Daylight White High Light Mode (6500K) Max working time: 12 hours of continuous lighting
Mode 5	Power OFF