

# ROLLMAX

RollMax is the newest addition to the Remco line of Professional Grade pumps. Durable components, quality accessories, and serviceable by our Rebuild Ready design make this pump a versatile product to have in the field.

## ROLLMAX R440 SERIES

(DIMENSIONS MAY VARY BY MODEL)

ROLLMAX R440 SERIES CONFIGURATIONS	
PART NUMBER	DESCRIPTION
R440C	4 ROLLER, CAST IRON, CW ROTATION, 5/8" SHAFT
R440SS	4 ROLLER, STAINLESS STEEL, CW ROTATION, 5/8" SHAFT
R441C	4 ROLLER, CAST IRON, CW ROTATION, 1/2" HOLLOW SHAFT
R441SS	4 ROLLER, STAINLESS STEEL, CW ROTATION, 1/2" HOLLOW SHAFT



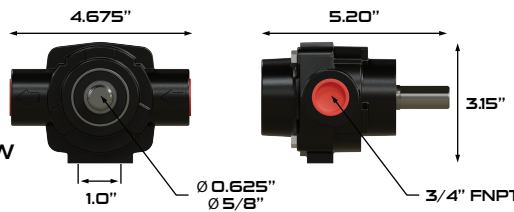
CAST IRON



STAINLESS STEEL

## PUMP SPECIFICATIONS

- **MAXIMUM FLOW RATE:** 9.4 GPM
- **MAXIMUM PRESSURE:** 150 PSI
- **MAXIMUM SPEED:** 2600 RPM
- **ROTATION:** CLOCKWISE
- **SHAFT SIZE:** 5/8" OR 1/2" HOLLOW
- **PORTS:** 3/4" FNPT



## FOR GAS ENGINE USE

ROLLMAX R440 SERIES PERFORMANCE CHART				
PSI	1800 RPM	2200 RPM	2600 RPM	
0	6.5	8.0	9.4	
20	5.8	7.0	8.5	
40	5.1	6.2	8.0	
100	4.5	5.6	7.5	
150	4.0	5.5	7.3	

## ROLLMAX R660 SERIES

(DIMENSIONS MAY VARY BY MODEL)

ROLLMAX R660 SERIES CONFIGURATIONS	
PART NUMBER	DESCRIPTION
R660C	6 ROLLER, CAST IRON, CCW ROTATION, 5/8" SHAFT
R660SS	6 ROLLER, STAINLESS STEEL, CCW ROTATION, 5/8" SHAFT
R660C-TAK	6 ROLLER KIT, CAST IRON, CCW ROTATION, 5/8" SHAFT, TORQUE ARM, CHAIN, MULTI-SPEED COUPLER



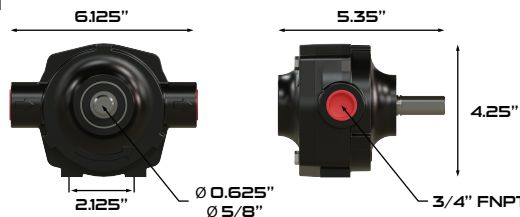
CAST IRON



STAINLESS STEEL

## PUMP SPECIFICATIONS

- **MAXIMUM FLOW RATE:** 19.6 GPM
- **MAXIMUM PRESSURE:** 150 PSI
- **MAXIMUM SPEED:** 1000 RPM
- **ROTATION:** CCW
- **SHAFT SIZE:** 5/8"
- **PORTS:** 3/4" FNPT



ROLLMAX R660 SERIES PERFORMANCE CHART				
PSI	540 RPM	850 RPM	1000 RPM	
0	10.5	16.7	19.6	
20	9.7	16.2	19.0	
40	8.6	15.7	18.5	
100	6.9	14.0	16.5	
150	5.7	12.8	15.0	

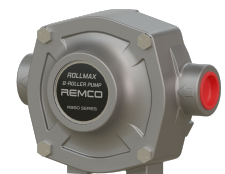
## ROLLMAX R880 SERIES

(DIMENSIONS MAY VARY BY MODEL)

ROLLMAX R880 SERIES CONFIGURATIONS	
PART NUMBER	DESCRIPTION
R880C	8 ROLLER, CAST IRON, CCW ROTATION, 15/16" SHAFT
R880SS	8 ROLLER, STAINLESS STEEL, CCW ROTATION, 15/16" SHAFT
R880C-TAK	8 ROLLER KIT, CAST IRON, CCW ROTATION, 15/16" SHAFT, TORQUE ARM, CHAIN, MULTI-SPEED COUPLER



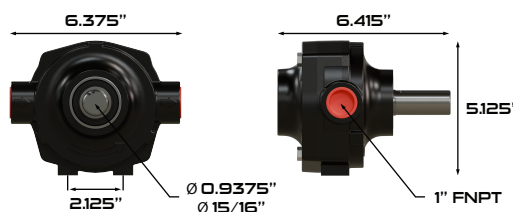
CAST IRON



STAINLESS STEEL

## PUMP SPECIFICATIONS

- **MAXIMUM FLOW RATE:** 24.5 GPM
- **MAXIMUM PRESSURE:** 150 PSI
- **MAXIMUM SPEED:** 1000 RPM
- **ROTATION:** CCW
- **SHAFT SIZE:** 15/16"
- **PORTS:** 1" FNPT

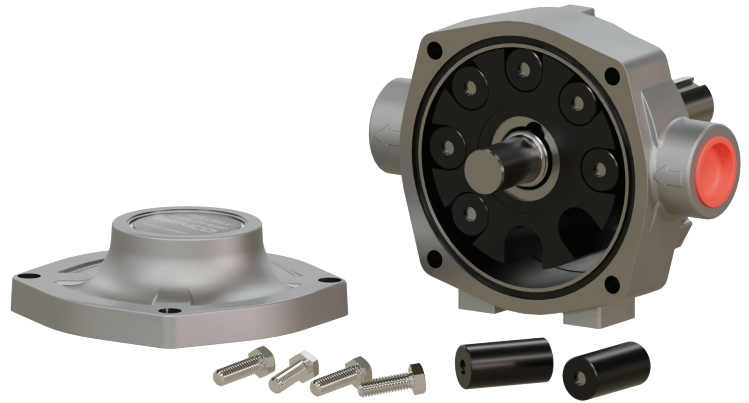


ROLLMAX R880 SERIES PERFORMANCE CHART				
PSI	540 RPM	850 RPM	1000 RPM	
0	13.0	20.0	24.0	
20	12.4	19.8	23.3	
40	11.6	19.1	22.4	
100	10.0	17.4	20.7	
150	8.5	16.0	19.3	

## ROLLMAX SERIES - REBUILD READY

Remco's RollMax Series can easily be serviced and rebuilt in a matter of minutes, the only tool required is a wrench. All of this is possible while the pump remains attached to the drive shaft and the plumbing remains intact.

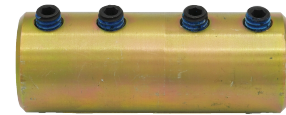
1. Loosen and remove the 4 cap bolts.
2. Easily slide the pumps endplate off of the shaft, be careful not to damage the shaft seal.
3. Inspect and replace worn rollers as needed with our universal repair kits. Be sure to lubricate the shaft seal before reinstalling.
4. Carefully reinstall pump endplate and cap bolts.
5. RollMax is ready to spray.



## ROLLMAX COUPLERS

(DIMENSIONS MAY VARY BY MODEL)

- > **RMC585410** - 5/8" SHAFT, 540/1000 RPM MULTI-SPEED, CAST ALUMINUM/ZINC, SET SCREWS INCLUDED
- > **RMC151651** - 15/16" SHAFT, 540/1000 RPM MULTI-SPEED, CAST ALUMINUM/ZINC, SET SCREWS INCLUDED
- > **RC5858** - 5/8" GAS ENGINE ADAPTER COUPLER, SET SCREWS INCLUDED



## ROLLMAX UNIVERSAL REPAIR KITS

(ROLLERS WILL FIT ANY BRAND OF PUMP)

- > **R440RK** - UNIVERSAL REPAIR KIT, 4 MAX ROLLERS 1/2", NEEDLE BEARING, 2 LIP SEALS, O-RING, PILL KEY
- > **R660RK** - UNIVERSAL REPAIR KIT, 6 MAX ROLLERS 3/4", NEEDLE BEARING, 2 LIP SEALS, O-RING, PILL KEY
- > **R880RK** - UNIVERSAL REPAIR KIT, 8 MAX ROLLERS 3/4", NEEDLE BEARING, 2 LIP SEALS, O-RING, PILL KEY



## TORQUE BAR AND CHAIN

- > **RMTAC** - TORQUE BAR AND CHAIN - FOR PTO MOUNTED PUMPS TO PREVENT ROTATION

