

DÜHA ROPS TOOLBOX

70840

Installation Instructions

DÜHA ROPS Tractor Mounting Toolbox (FITS 2017-Current BX1880, BX2380 and BX2680 ROPS)

Tools Needed:

// Hex Key Wrench 1/8" // 2 Open-End Wrenches - // Wrench or Socket - 9/16"
1/2" // 2 Wrenches or Sockets - 7/16" // 1- Socket - 1/2"//

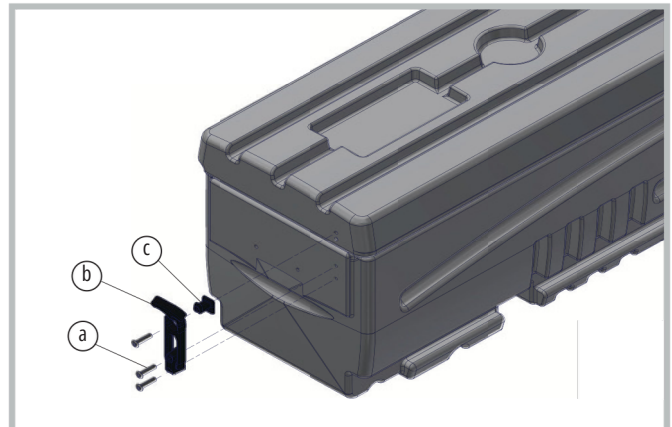
Installation Instructions:

DISCLAIMER: Some of the parts on the part list are already assembled in production. For reference if anything were to be missing or break, these part #'s are provided for you. Additionally, this toolbox may be put on the support brackets facing with lid opening in either direction, however we have only shown it assembled one way on this installation instruction sheet. For easier reference during installation, you may rip page 4 off for a full parts list instead of flipping back and forth.



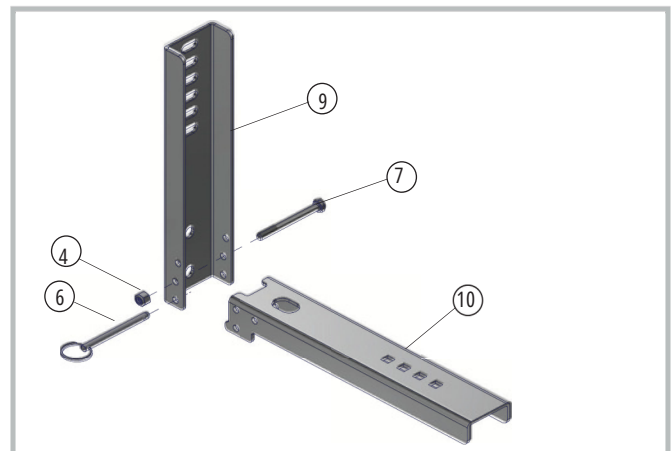
STEP 1 - Attach Rubber T-Handles

The pieces for this rubber T-Handle come in the divider kit bag. You will find 6 #10-32 x 1.0" (a), the Rubber T-Handle (b) and the T-Handle Keeper (c). Place Rubber T-Handle (b) over inserts in Toolbox Base. Insert two Bolts #10-32 x 1.0" (a) through T-Handle (a) and use 1/8" Hex Key Wrench to tighten into the inserts, on each end, T-Handle should point outward when in the up position. Next install the Rubber T-Handle Keeper (c) on the lid, make sure the alignment knob on the back of the T-Handle Keeper lines up with the recess in the lid and secure in place with one Bolt #10-32 x 1.0" (a) by inserting through the T-Handle Keeper (c) and thread into the insert in the lid, on each end.



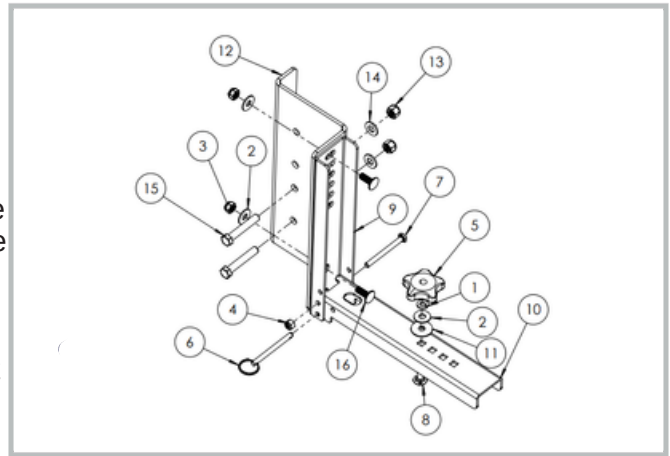
STEP 2 - Assemble Brackets

To assemble the brackets use a Bolt 1/4 x 2-3/4 (7), insert the bolt through the 2nd hole from the bottom of the vertical support bracket (9) and through the top back hole of the horizontal support bracket (10) and secure with 1/4 Nylock nut (4) (do not over tighten). Insert the Pin 1/4 x 2-1/2 (6) through the bottom hole through both brackets. Note: The bracket can be pivoted up out of the way if you remove the Toolbox. Just pull the pin, pivot the horizontal support bracket up and pin up with the pin using the top hole and go through both brackets.



STEP 3 - Attach KUBOTA Mount

Look at your ROPS and locate two 3/8" holes on each side above the taillights and below the hinge on your ROPS. *NOTE: You will need to remove the SMV Emblem from your tractor to fit the box. We are not making any recommendations on where and how to remount your SMV Emblem. This will be at the owners discretion.* Grab a KUBOTA Mount (12), and align the bottom two holes with the 3/8" ROPS holes. Next, use two 3/8" Hex Bolts (15) to hold the Kubota Mount on to the ROPS, attaching it with a 3/8" washer (14) and a 3/8" Nylock Nut (13). Repeat this step with the other side.



STEP 4 - Attach Support Brackets to the KUBOTA Mount

Attach assembled Support Brackets to KUBOTA Mount (12) using 2 carriage bolts 5/16" x 7/8" (16), 2 Flat Washer 5/16" (2), and 2 Nylock Nuts 5/16" (3). Depending on the position of the ring pull (6), the assembly should look like one of the following images below at this point.

ITEM NO.	PART NUMBER	DESCRIPTION	QTY.
1	1001011	5/16" LOCK WASHER, ZINC	2
2	1001012	5/16" FLAT WASHER, ZINC	6
3	1001093	5/16"-18 NYLOCK NUT, 18-8 SS	4
4	1001122	1/4"-20 NYLOCK NUT, ZINC	2
5	1001223	5/16"-18 KNOB - 5 STAR WITH THRU-HOLE	2
6	1001287	1/4" x 2 1/2" RING PULL DETENT PIN, ZINC	2
7	1001243	1/4"-20 x 2-3/4" HEX BOLT, PT, ZINC	2
8	1001248	5/16"-18 x 1-1/4" CARRIAGE BOLT, ZINC	2
9	1001252	HUMPSTOR VERTICAL SUPPORT BRACKET	2
10	1001253	HUMPSTOR HORIZONTAL SUPPORT BRACKET	2
11	1001288	5/16" X 1 1/2" O.D. FENDER WASHER, ZINC	2
12	D-90476	KUBOTA BX SERIES HUMPSTOR MOUNT	2
13	1001335	3/8"-16 NYLOCK NUT, Zinc	4
14	1001336	3/8" SAE FLAT WASHER, Zinc	4
15	1001337	3/8"-16 X 2 1/4" HEX BOLT, PT, Zinc	4
16	1001340	5/16" -18 X 7/8" CARRIAGE BOLT, Zinc	4



STEP 5 - Attach Toolbox to the Mounting Brackets

Storage Box Positions

The ROPS Tractor Mounting Toolbox can be mounted with the lid opening toward the front of the tractor (a) or with the lid opening toward the back of the tractor (b). The assembly steps and hardware are the same, however one benefit of it opening toward the front, is the lid can open all the way while being closer to the ROPS bar. When opening facing toward the back of the tractor, the lid will hit the hinge of the ROPS not allowing it to stay unless on the furthest attachment point.

Once you have positioned the toolbox in the position you desire, use the 5/16"x 1-1/4" carriage bolt (8) and from underneath the box, slide it through one of the 4 predetermined holes on the mounting bracket (10). Typically, the furthest two positions are most used. While holding the 5/16"x 1-1/4" carriage bolt (8), align three washers in this order from bottom to top, (11), (2), and (1). Finally, use the 5/16" Knob (5) and thread it together with the carriage bolt you are holding underneath.

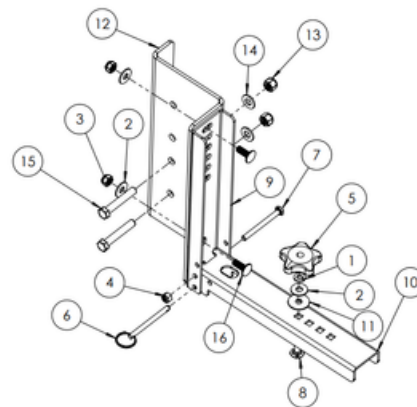
Position A



Position B



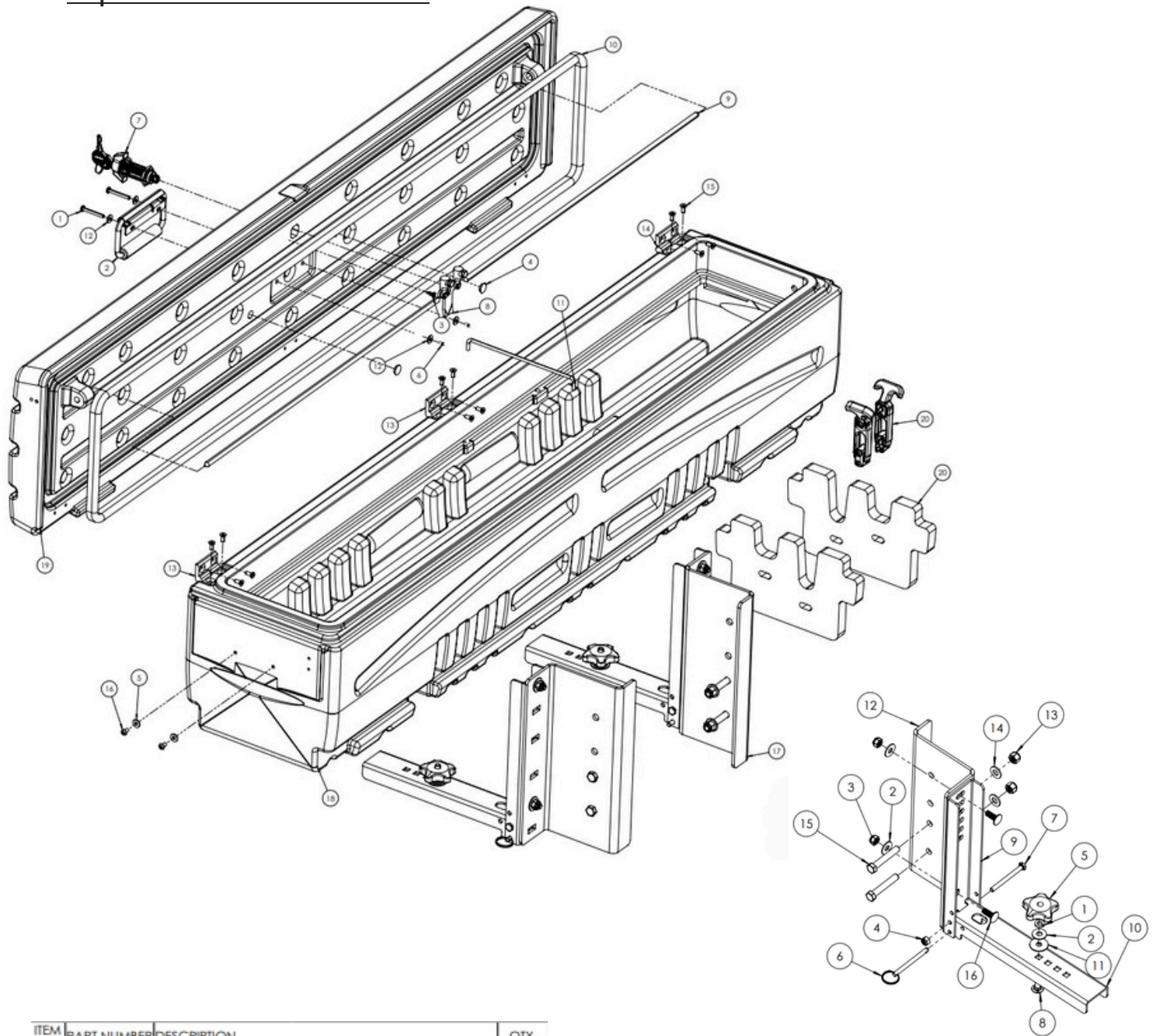
ITEM NO.	PART NUMBER	DESCRIPTION	QTY.
1	1001011	5/16" LOCK WASHER, ZINC	2
2	1001012	5/16" FLAT WASHER, ZINC	6
3	1001093	5/16"-18 NYLOCK NUT, 18-8 SS	4
4	1001122	1/4"-20 NYLOCK NUT, ZINC	2
5	1001223	5/16"-18 KNOB - 5 STAR WITH THRU-HOLE	2
6	1001287	1/4" x 2 1/2" RING PULL DETENT PIN, ZINC	2
7	1001243	1/4"-20 x 2-3/4" HEX BOLT, PT, ZINC	2
8	1001248	5/16"-18 x 1-1/4" CARRIAGE BOLT, ZINC	2
9	1001252	HUMPSTOR VERTICAL SUPPORT BRACKET	2
10	1001253	HUMPSTOR HORIZONTAL SUPPORT BRACKET	2
11	1001288	5/16" X 1 1/2" O.D. FENDER WASHER, ZINC	2
12	D-90476	KUBOTA BX SERIES HUMPSTOR MOUNT	2
13	1001335	3/8"-16 NYLOCK NUT, Zinc	4
14	1001336	3/8" SAE FLAT WASHER, Zinc	4
15	1001337	3/8"-16 X 2 1/4" HEX BOLT, PT, Zinc	4
16	1001340	5/16" -18 X 7/8" CARRIAGE BOLT, Zinc	4



Safety Instructions:

Warning: 75 LBS CAPACITY – DO NOT EXCEED 75 POUNDS OF CARGO IN THE TOOLBOX. CAUTION – Do not store explosives or hazardous materials in the Toolbox. Do not place loaded guns in the Toolbox. For further instructions refer to the vehicle owners manual or contact DÜHA, Inc.

Exploded View / Parts List



ITEM NO.	PART NUMBER	DESCRIPTION	QTY.
1	1001006	#10-24 x 1.5" BHDHS 18-8 SS	2
2	1001044	D-LOOP FOLDING HANDLE	1
3	1001098	#8-18 x 1/2" PRHDS, FT, 18-8 SS	1
4	1001139	1/2" NYLON HOLE PLUG	2
5	1001143	#10 Flat Washer, 18-8 SS	2
6	1001144	#10-24 Nylock Nut, 18-8 SS	2
7	1001232	WING KNOB 1/4 TURN LATCH WITH KEY	1
8	1001233	3 PT STEEL CAM WITH ROD ADAPTORS	1
9	1001234	STEEL LOCKING ROD	2
10	1001236	1/2" x 1/2" D-SHAPED EPDM ADHESIVE BACKED GASKET	10.67
11	1001239	HUMPSTOR CENTER WIRE BRACE	1
12	1001244	#10 Flat Washer, Bonded Seal, 18-8 SS	4
13	1001256	DIE CAST HINGE, LEFT	2
14	1001257	DIE CAST HINGE, RIGHT	1
15	1001258	#10-32 X 1/2" FHSCS, 18-8 SS	12
16	1001347	#10-32 x 3/8" BHDHS 18-8 SS	2
17	1001354	HARDWARE BOX FOR KUBOTA TOOL BOX (70840)	1
18	70800-BASE	HUMPSTOR BASE	1
19	70800-LID	HUMPSTOR LID	1
20	D-DIV 70800	HUMPSTOR DIVIDER KIT	1

ITEM NO.	PART NUMBER	DESCRIPTION	QTY.
1	1001011	5/16" LOCK WASHER, ZINC	2
2	1001012	5/16" FLAT WASHER, ZINC	6
3	1001093	5/16"-18 NYLOCK NUT, 18-8 SS	4
4	1001122	1/4"-20 NYLOCK NUT, ZINC	2
5	1001223	5/16"-18 KNOB - 5 STAR WITH THRU-HOLE	2
6	1001287	1/4" x 2 1/2" RING PULL DETENT PIN, ZINC	2
7	1001243	1/4"-20 x 2-3/4" HEX BOLT, PT, ZINC	2
8	1001248	5/16"-18 x 1-1/4" CARRIAGE BOLT, ZINC	2
9	1001252	HUMPSTOR VERTICAL SUPPORT BRACKET	2
10	1001253	HUMPSTOR HORIZONTAL SUPPORT BRACKET	2
11	1001288	5/16" X 1 1/2" O.D. FENDER WASHER, ZINC	2
12	D-90476	KUBOTA BX SERIES HUMPSTOR MOUNT	2
13	1001335	3/8"-16 NYLOCK NUT, Zinc	4
14	1001336	3/8" SAE FLAT WASHER, Zinc	4
15	1001337	3/8"-16 X 2 1/4" HEX BOLT, PT, Zinc	4
16	1001340	5/16" -18 X 7/8" CARRIAGE BOLT, Zinc	4