

Hydraulic Floor Jack 3 Ton

HT3300

Double Pump Mechanism

Quick start technology ensures that after the 1st stroke, the hydraulic floor jack moves up 3 times more than the standard jack

Robust and durable steel body provides rigidity and stability

Swivel saddle for convenient positioning under the vehicle

Heavy-duty swivel rear castors for smooth movement and positioning

Cushion on handle prevents damage to the vehicle

Rubber cushion on the saddle prevents marring of the lift points of the vehicle

Built-in safety valve protects against overloading of jack at 120% of capacity

Hydraulic oil by-pass system protects ram from being over extended

Complete with long two piece handle for ease of operation and reduced operator fatigue

Dimensions: (27×13-1/2×6-1/8) inches/ (686×330×152) mm

Cushion on handle prevents damage

Rubber cushion on saddle prevents marring



SPECIFICATIONS

CAPACITY

SADDLE LIFTS

SADDLE DIAMETER

SADDLE SWIVEL

OVERALL DIMENSIONS

FRONT WHEEL DIAMETER

REAR WHEEL DIAMETER

3 Ton (3000 Kg).

5-1/4" to 18-1/4"
(133 mm to 465 mm)

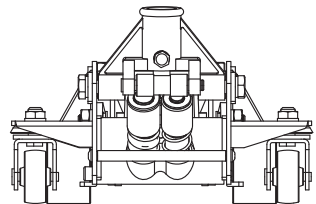
4-1/4"

360 degrees

27" L x 13-1/2" W x 6-1/8" H

3-1/6" x 2" Wide

2-3/8" X 1" Wide



Double Pump Technology ensures fast rising action

⚠ WARNING: Cancer and Reproductive Harm-
www.P65Warnings.ca.gov

Complies with ASME PASE/2014 Safety Standard

SAFETY INFORMATION

- Follow workshop health & safety rules, regulations and conditions when using the floor jack.
- This is a lifting device only. Do not use it for anything other than its intended purpose. Load must be supported by proper rated capacity jack stands under the vehicle before starting inspection or work. Do not overload. Jack capacity is 3 tons.
- Use only on hard level surfaces.
- Never stand or place your body beneath the load being lifted.
- Never attempt to exceed the limits of the floor jack. Applying excessive force to the tool can overload the jack, decrease the life and increase the wear on the jack.
- Lift only on areas of the vehicle as specified by the vehicle manufacturer.
- Do not move or dolly the vehicle while it is on the jack.
- Use genuine parts only. Unauthorized parts may be dangerous and will void the warranty.
- Keep the floor jack clean and in good working order for best and safest performance.
- DO NOT use the floor jack for a task it is not designed to perform.
- DO NOT use for aircraft purposes.
- DO NOT overreach. Keep proper footing and balance at all times. Do not reach over or across the product.
- DO NOT drop, throw or abuse the floor jack.
- Failure to heed these markings may result in serious personal injury and/or property damage.

WARNING!

- DO NOT use the floor jack if damaged or thought to be faulty. Contact your local service agent.

PACKAGING CONTENT

DESCRIPTION	QTY.
Floor Jack	1
Lower Handle	1
Upper Handle	1
O.I.P.M.	1

TOOLS NEEDED

- 10 mm spanner / 3/8" spanner
- 18 mm spanner / 11/16" spanner
- 8mm hex key/ 5/16" hex key

BEFORE INSTALLATION

- Make sure all equipment is rated to the appropriate capacity.
- Check damaged parts. Before using the tool, any part that appears damaged should be carefully checked to determine that it will operate properly and perform its intended function. Check for alignment and binding of

moving parts, any broken parts or mounting fixtures; and any other condition that may affect proper operation. Any part that is damaged should be properly repaired or replaced by a qualified technician.

- Always use good quality hydraulic jack oil when adding or replacing the oil in your Floor Jack. Do not mix different types of oils together. When filling the Floor Jack with oil, do not permit dirt or any other substance to enter the hydraulic system. (Refer Maintenance of Page 3 for more details.)
- Make sure that all connections are secure.
- Consult the vehicle owner's manual to determine the location of lift points.

WARNING!

- Defective accessories can lead to personal injury and material damage

INSTALLATION

(Refer "EXPLODED VIEW")

CAUTION

- The Floor jack is heavy. Use caution when lifting out of box.

Assembly

- In the two piece handle assembly (37) provided, assemble the upper section into the lower section, line up the holes, insert and tighten the screw (38). Use a 10 mm spanner / 3/8" spanner to tighten the screw.
- Insert the bottom end of handle into the top of handle Socket (28) and securely tighten the handle bolt (27) and washer. Ensure the handle can turn freely. Use an 18 mm spanner / 11/16" spanner to tighten the bolt.
- Turn the handle/release valve clockwise to the closed position. Do not over tighten.
- Your floor jack is ready for use.

OPERATING INSTRUCTIONS

(Refer "EXPLODED VIEW")

CAUTION

- Chock vehicle's wheels to prevent rolling while lifting.
- Use jack stands to support vehicle. Never work around or under a vehicle supported only by the Floor Jack.
- Watch for movement of vehicle or jack stands as vehicle is lowered. If any movement occurs, jack vehicle up and adjust jack stands properly.
- When not in use, make sure pressure is released by turning Handle Assembly fully counterclockwise. This will prolong the life of the jack.

Lifting

- Twist the handle assembly clockwise to close the pressure release valve.
- Position the jack under the specified lift point.

- Begin lifting by pumping the handle up and down.
- Lift Handle Assembly as high as clearance allows.
- Repeat Steps 3-4 until vehicle is at desired height. Do not over-extend the jack.
- Place jack stands underneath vehicle at specified points. Refer to the vehicle's instruction manual for proper jack stand placement locations.
- Slowly twist Handle Assembly counterclockwise. This will lower the vehicle onto the jack stands.
- Completely lower the Floor Jack and remove from underneath the vehicle.
- To make sure vehicle is stable, stand away and attempt to rock the vehicle. If movement is detected, jack up the vehicle and adjust jack stands properly. Test again.

Lowering

- Turn the handle/release valve clockwise to the closed position. Do not over tighten.
- Pump the handle up and down to lift vehicle off jack stands.
- Remove the jack stands. Do not get under or let anyone get under the vehicle while lowering.
- Turn the handle/release valve slowly counterclockwise to lower the vehicle onto the ground.

MAINTENANCE

(Refer "EXPLODED VIEW")

CAUTION

- Use high grade hydraulic oil only.
- Never use brake fluid, motor oil, transmission fluid, turbine oil or any other fluids.
- ISO-VG22 or equivalent hydraulic oil is recommended.

Check and Refill Oil

- With the jack in the fully lowered, level position, remove unit cover (25), then remove oil filler plug (42). Use an 8mm / 5/16" hex key to open the oil filler plug.
- Proper oil level should be just covering inner cylinder as seen from the oil filler plug hole.
- Do not overfill. Always fill with new, clean hydraulic jack oil as recommended above.
- Reinstall oil filler plug, then reinstall unit cover.

Lubrication and Cleaning

- Periodically clean and lubricate all moving parts and pivot points.

Air Venting Procedures

- With the jack in the fully lowered position, handle in open position, remove oil filler plug.
- Pump the handle rapidly several times. Reinstall oil filler plug.
- Turn the handle/release valve clockwise to the closed position.

- Pump the handle until the lift arm (8) reaches maximum height and continue to pump several times to remove trapped air in the system.
- Turn the handle/release valve counterclockwise in one full turn and lower lift arm to the lowest position. Use force on saddle if necessary.
- Carefully and slowly loosen oil filler plug to release pressurized air.
- Repeat above steps until trapped air is completely vented.

Damaged Equipment

- Any jack that appears to be damaged in any way, is found to be worn, or operates abnormally **SHALL BE REMOVED FROM SERVICE UNTIL REPAIRED.**

Alterations

- Because of potential hazards associated with this type of equipment, no alterations shall be made to the product.

Attachments and Adapters

- Only attachments and/or adapters supplied

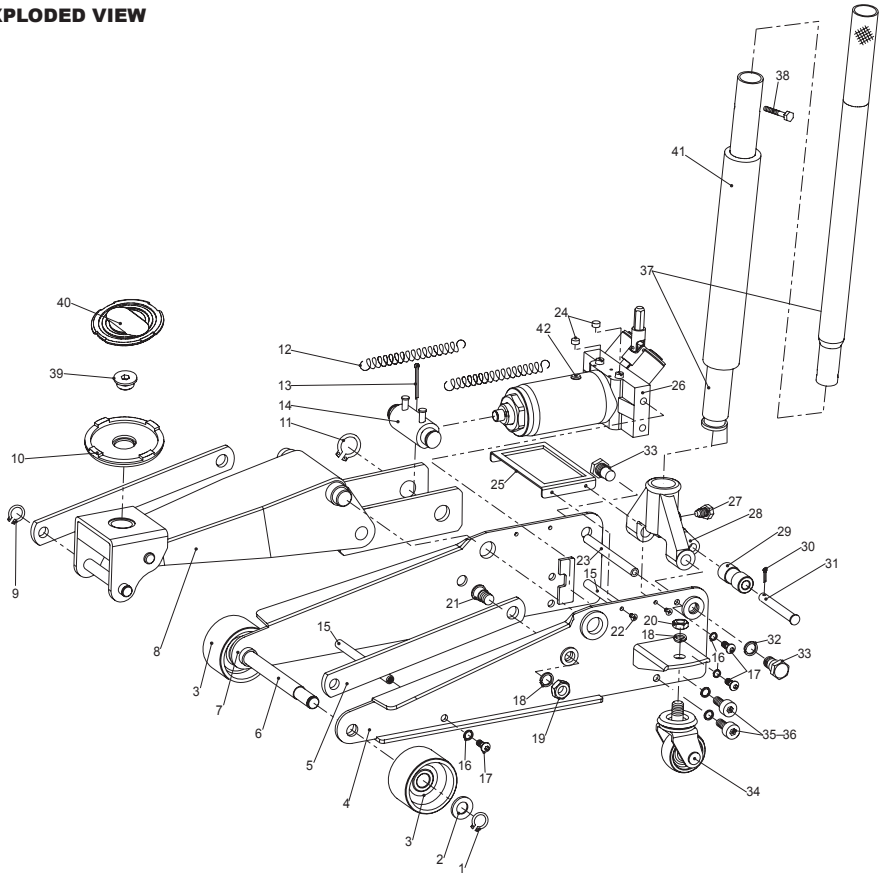
Inspection

- Visual inspection shall be made before each use of the device by checking for abnormal conditions, such as cracked welds, leaks, and damaged, loose, or missing parts.
- Other inspections shall be made per product operating instructions.
- This device shall be inspected immediately if the device is believed to have been subjected to an abnormal load or shock. It is recommended that this inspection be made by a TH authorized repair facility.
- Owners and/or operators should be aware that repair of this equipment may require specialized knowledge and facilities. It is recommended that an annual inspection of the product be made by a TH authorized repair facility and that any defective parts, decals, or safety labels or signs be replaced with TH specified parts.

Storage

- This Jack should be stored in a dry location on a level surface.

EXPLODED VIEW



PART LIST

REF NO.	PARTS DESCRIPTION	QTY.
1	ø18, C ring	2
2	ø18 Washer	2
3	Front Wheel	2
4	Left Shaft unit	1
5	Rod Link	2
6	SPINDLE	2
7	Right Shaft unit	1
8	LIFT ARM	1
9	ø16, C ring	2
10	Saddle	1
11	ø25, C ring	2
12	Return Spring	2
13	ø4x45 Coder Pin	1
14	Reinforce Axle	1
15	Reinforce Axle-Rod	2
16	ø8, lock washer	6
17	M8x20 Inner Hex Bolt	6
18	ø16, lock washer	4
19	ø16, Nut	2
20	ø16, thin Nut	2
21	Pin Link Rod	2

REF NO.	PARTS DESCRIPTION	QTY.
22	Screws M5*15	4
23	Pull-Rod	2
24	Safety Head	2
25	Cover	1
26	Power unit	1
27	M12 Handle Bolt	1
28	Handle Socket	1
29	Roller	1
30	ø25x18 Coder Pin	1
31	Plunger Pin	1
32	ø18 lock washer	2
33	M18 Short Bolt	2
34	Rear Wheel	2
35	"M10x20 Inner Hex Bolt"	4
36	ø10 lock washer	4
37	Handle Assemble	1
38	M6x35 Handle Bolt	1
39	Saddle Axle	1
40	Saddle pad	1
41	Handle Foam	1
42	Oil Filler Plug	1

TROUBLE SHOOTING

PROBLEM	POSSIBLE CAUSE	CORRECTIVE ACTION
Jack will not lift the load.	<ol style="list-style-type: none"> 1. Release valve not tightly closed. 2. Low oil level. 3. Defective or worn internal parts. 4. Load exceeds maximum allowance. 	<ol style="list-style-type: none"> 1. Tighten release valve. 2. Check and add oil. Follow "Check and Refill Oil" instructions on Page 3. 3. Discontinue use and contact a TH authorized repair center. 4. Use a higher capacity jack.
Jack will not hold the load.	<ol style="list-style-type: none"> 1. Release valve not tightly closed. 2. Power unit malfunction. 	<ol style="list-style-type: none"> 1. Tighten release valve. 2. Discontinue use and contact a TH authorized repair center.
Jack will not descend to minimum height, or will not remain in lowered position.	<ol style="list-style-type: none"> 1. Air trapped in system. 2. Reservoir oil overfilled. 	<ol style="list-style-type: none"> 1. Vent air out of system. Follow "Air Venting Procedures" above. 2. Check and ensure proper oil level. Follow "Check and Refill Oil" instruction on Pg.3.
Jack will not lift to max height.	<ol style="list-style-type: none"> 1. Low oil level. 	<ol style="list-style-type: none"> 1. Check and ensure proper oil level. Follow "Check and Refill Oil" instructions above.
Jack will not function properly after tried solution.	<ol style="list-style-type: none"> 1. Internal malfunction or structural damage. 	<ol style="list-style-type: none"> 1. Stop usage and contact a TH authorized repair center.

DISPOSAL

The components or the used product must be given to companies that specialize in the disposal and recycling of industrial waste.

