



## QUICK START GUIDE

### SCAN THE QR CODE FOR ADDITIONAL RESOURCES

- ▶ Full Instruction manual
- ▶ Customer service
- ▶ Instructional video tutorials
- ▶ FAQ's

### SAFETY INFORMATION

**Use only the included charging cable:** Always use the supplied charging cable and a 5V, 2A+ USB A charging adapter.

**Charge in a Safe Location:** Charge in a cool, dry area away from flammable materials or extreme temperatures. Do not charge the battery on a bed, sofa, or in any area where airflow is restricted.

**Avoid Overcharging:** Overcharging can reduce battery life and pose safety risks. Do not exceed the recommended charging time or voltage.

**Charge at Room Temperature:** Avoid charging the battery in temperatures below 32°F (0°C) or above 113°F (45°C), as this may damage the battery or affect its performance.

Changes or modification not expressly approved by the party responsible for compliance could void the user's authority to operate this device.

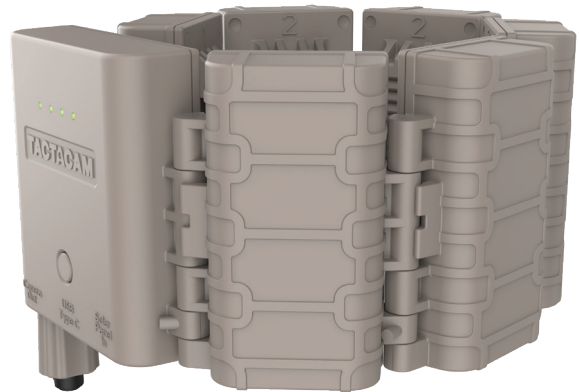
NOTE: This equipment has been tested and found to comply with the limits for a Class B digital device, pursuant to part 15 of the FCC Rules. These limits are designed to provide reasonable protection against harmful interference in a residential installation. This equipment generates, uses, and can radiate radio frequency energy and, if not installed and used in accordance with the instructions, may cause harmful interference to radio communications. However, there is no guarantee that interference will not occur in a particular installation. If this equipment does cause harmful interference to radio or television reception, which can be determined by turning the equipment off and on, the user is encouraged to try to correct the interference by one or more of the following measures:

- Reorient or relocate the receiving antenna.
- Increase the separation between the equipment and receiver.
- Connect the equipment into an outlet on a circuit different from that to which the receiver is connected.
- Consult the dealer or an experienced radio/TV technician for help

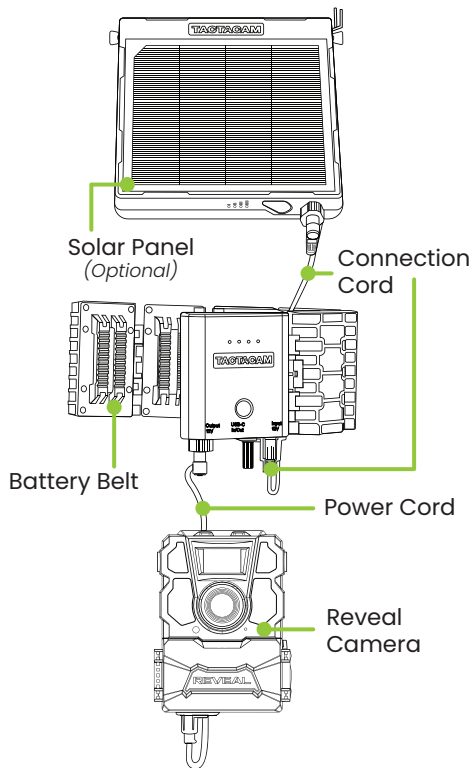
This device complies with part 15 of the FCC Rules. Operation is subject to the following two conditions: (1) This device may not cause harmful interference, and (2) this device must accept any interference received, including interference that may cause undesired operation.

# TACTACAM™

## REVEAL BATTERY BELT



# QUICK START GUIDE



## CHARGING TIPS

**Do Not Charge if Damaged:** If the battery has been dropped, exposed to liquid, or shows signs of damage, do not charge it and contact the manufacturer for further instructions.

**Avoid Partial Charges When Possible:** Frequent partial charges can shorten the battery's lifespan over time. Whenever possible, try to charge the battery fully.

**Storage:** If you plan to store the battery for an extended period, it's recommended to store it at around 40%-60% charge. Avoid leaving it in a fully charged or empty state for long periods.

### 1 Ensure Battery and Charging Cable are in Good Condition:

Inspect the battery for any visible damage or swelling. If damaged, do not charge it and dispose of it properly.

Inspect the charging cable for any frayed wires or defects.

### 2 Connect the Battery to the Charging cable's USB C connector. Insert the USB A end of the cable into the adapter port.

Ensure it is securely connected.

### 3 Plug the Charger into a Power Source:

Connect the charging adapter to a power outlet. Ensure the outlet provides a stable power supply.

### 4 End Charging:

Once the battery reaches full charge (all LEDs are illuminated and not blinking), disconnect the battery from the charger.

### 5 Store Battery Properly After Charging:

If you're not using the battery immediately, store it in a cool, dry place. Avoid leaving the battery fully charged or completely discharged for extended periods, as this can reduce its lifespan.