



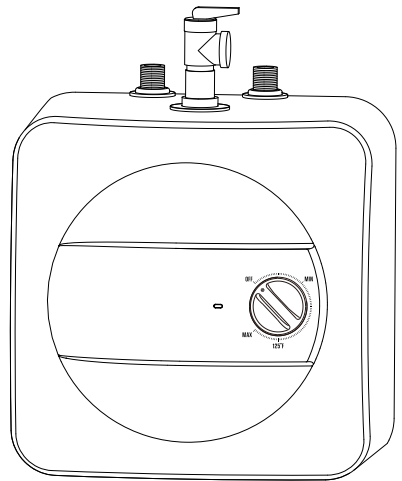
User Manual

Electric Mini-Tank Water Heater

Products:

ES013

ES025



WARNING

Please read all instructions before using this water heater. Failure to follow the information in these instructions may result in fire, electric shock, property damage, injury or death.

CONTENTS

| | |
|--|----|
| 1 Safety Information | 04 |
| 1.1 Safety Definitions | 04 |
| 1.2 Important Safety Instructions | 04 |
| 1.3 Water Temperature Adjustment | 05 |
| 2 Information about the product | 06 |
| 2.1 Models overview | 06 |
| 2.2 Dimensions | 07 |
| 2.3 Technical data | 08 |
| 3 Installation instructions | 09 |
| 3.1 Mounting the heater | 09 |
| 3.2 Pipe connections | 09 |
| 3.3 Closed system thermal expansion | 10 |
| 3.4 Electrical Connection | 10 |
| 4 Use | 11 |
| 4.1 Starting and testing | 11 |
| 4.2 Temperature setting | 11 |
| 5 Maintenance | 12 |
| 5.1 Removing the cover | 12 |
| 5.2 Draining the heater | 12 |
| 5.3 Inspecting the anode rod | 12 |
| 5.4 Removing the heating element | 12 |
| 5.5 Descaling the heating element | 13 |
| 6 Replacement of parts | 13 |
| 6.1 Changing the anode rod | 13 |
| 6.2 Changing the heating element | 13 |
| 6.3 Changing the thermostat | 13 |
| 7 Troubleshooting | 14 |
| 7.1 Fault Assessment and Troubleshooting | 14 |
| 7.2 Resetting High Limit Switch | 15 |
| 8 Interior components diagram | 16 |

SAVE THESE INSTRUCTIONS

1 Safety Information

1.1 Safety Definitions

This manual has safety information and instructions to help you eliminate or reduce the risk of accidents and injuries.



DANGER

Indicates an imminently hazardous situation which, if not avoided, will result in death or serious injury.



WARNING

Indicates a hazardous situation that, if not avoided, could result in death or serious injury.



CAUTION

Indicates a hazardous situation which, if not avoided, could result in property damage and minor or moderate injury.



NOTICE

This symbol indicates important information where there is no risk to people or property.

1.2 Important Safety Instructions



WARNING

When using electrical appliances, safety precautions to reduce the risk of fire, electric shock or injury to persons should be followed.

1. READ ALL INSTRUCTIONS BEFORE USING THIS WATER HEATER.
2. This water heater must be grounded. Connect only to properly grounded outlet. See "GROUNDING INSTRUCTIONS" found on (specific page or section to be included).
3. Install or locate this water heater only in accordance with the provided installation instructions.

4. Use this water heater only for its intended use as described in this manual.
5. Do not use an extension cord set with this water heater. If no receptacle is available adjacent to the water heater, contact a qualified electrician to have one properly installed.
6. As with any appliance, close supervision is necessary when used by children.
7. Do not operate this water heater if it has a damaged cord or plug, if it is not working properly, or if it has been damaged or dropped.
8. This water heater should be serviced only by qualified service personnel. Contact nearest authorized service facility for examination, repair, or adjustment.
9. Do not use multi-outlet adaptors (i.e. power strips) with this water heater.
10. Failure to inspect the anode rod at least once a year could cause the tank to fail and leak. This condition is not covered under the manufacturer's warranty.
11. Any water heater should be installed in such a manner that if it should leak, the resulting flow of water will not cause damage to the area in which it is installed. National Plumbing codes require a drain pan for any water heater installation. Failure to install one is the sole responsibility of owner and/or installer. Reference UPC 2006 (Uniform Plumbing Code) Section 508.1, or IPC 2006 (International Plumbing Code) Section 504.7.



CAUTION

The installer should review the contents of this manual with the owner upon completion of installation, and the manual should be left with the owner and placed in a location close to the installation.



CAUTION

The manufacturer cannot be responsible for the damages caused by improper installation or by failure to follow instructions in this manual. Comply with the installation instructions before completing electric connection.

⚠ DANGER

Hydrogen gas is produced in a hot water system served by this heater that has not been used for a long period of time (2 weeks or more). Hydrogen gas is extremely flammable. To reduce the risk of injury under these conditions, it is recommended that the hot water faucet be opened for several minutes at the kitchen sink before using any electrical appliance connected to the hot water system. When hydrogen is present, there will probably be an unusual sound such as air escaping through the pipe as the water begins to flow. There should be no smoking or open flame near the faucet at the time it is open.

⚠ CAUTION

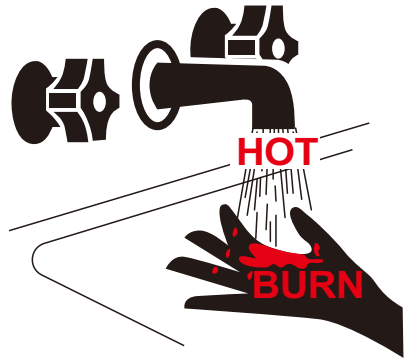
Any water heater should be installed in such a manner that if it should leak, the resulting flow of water will not cause damage to the area in which it is installed. National Plumbing codes require a drain pan for any water heater installation. Failure to install one is the sole responsibility of owner and/or installer. Reference UPC 2006 (Uniform Plumbing Code) Section 508.1, or IPC 2006 (International Plumbing Code) Section 504.7.

⚠ CAUTION

Prior to connecting the power supply, ensure tank is full of water and system is purged of air.

ⓘ NOTICE

Tank failure due to neglecting to maintain the anode rod is not covered under warranty (see Section 5 Maintenance).

1.3 Water Temperature Adjustment**⚠ DANGER**

Water temperature over 125 °F can cause severe burns instantly or death from scalds.

Temperature control settings usually approximate tap water temperature. However, factors could cause water temperature to reach 160°F regardless of the control settings.

Children, disabled and elderly are at highest risk of being scalded.

See instruction manual before setting temperature at water heater.

Feel water before bathing or showering.

Temperature limiting valves are available; see manual.

Safety, energy conservation, and hot water capacity are factors to be considered when selecting the water temperature setting of the water heater. Water temperatures above 125°F can cause severe burns or death from scalding. Be sure to read and follow the warnings outlined on the label pictured to the left. This label is also located on the water heater near the top of the tank.

Time/Temperature Relationship in Scalds

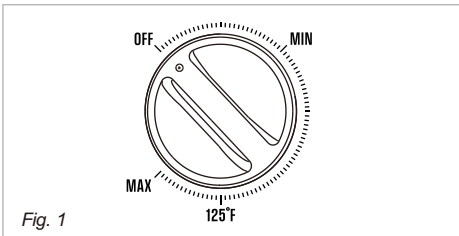
| Temperature | Time to Produce a Serious Burn |
|----------------|--------------------------------|
| 120 °F (49 °C) | More than 5 minutes |
| 125 °F (52 °C) | 1-1/2 to 2 minutes |
| 130 °F (54 °C) | About 30 seconds |
| 135 °F (57 °C) | About 10 seconds |
| 140 °F (60 °C) | Less than 5 seconds |
| 145 °F (63 °C) | Less than 3 seconds |
| 150 °F (66 °C) | About 1-1/2 seconds |
| 155 °F (68 °C) | About 1 second |

Table courtesy of Shriners Burn Institute

The chart shown above may be used as a guide in determining the proper water temperature for your home.

! DANGER
 There is a Hot Water SCALD Potential if the water temperature thermostat is set too high. Households with small children, disabled or elderly persons may require a 120 °F (49 °C) or lower thermostat setting to prevent contact with "HOT" water.

! CAUTION
 The thermostat has been set at the factory to 125 °F (51.7 °C) or lower to reduce the risk of scald injury.



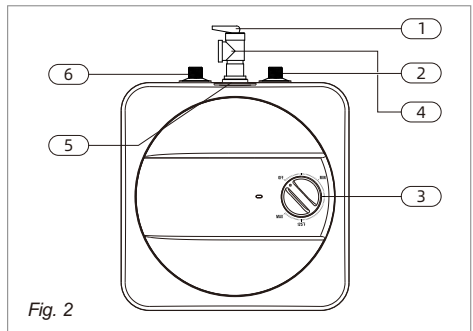
Water Temperature Setting

The temperature of the water in the water heater can be regulated by setting the temperature dial of the adjustable surface mounted thermostat(s) located behind the jacket access panel(s).

! DANGER
 Hotter water increases the Potential for Hot Water SCALDS.

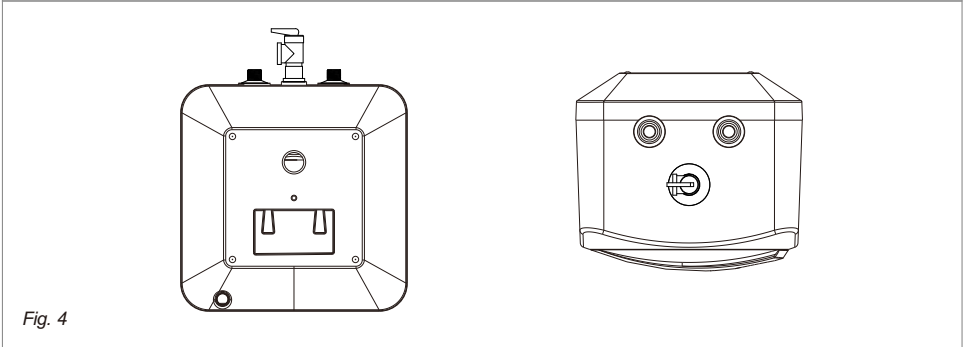
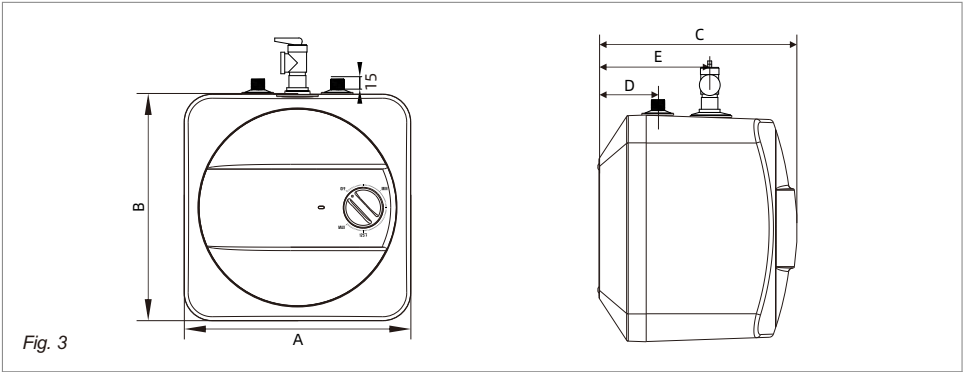
2 Information about the product

2.1 Models overview



1. Temperature & pressure relief valve, 3/4 NPT male
2. Cold water inlet(BLUE) 1/2 NPT male
3. Temperature Adjustment Knob
4. Temperature & pressure relief valve discharge line to drain
5. 3/4 NPT female tapping for relief valve
6. Hot water outlet (RED) 1/2 NPT male

2.2 Dimensions



| Capacity | Dimensions unit: inch (mm) | | | | |
|----------|----------------------------|-------------|-------------|-----------|------------|
| | A | B | C | D | E |
| 1.3 gal | 11.26 (286) | 11.26 (286) | 9.84 (250) | 2.91 (74) | 5.55 (141) |
| 2.5 gal | 12.99 (330) | 12.99 (330) | 11.81 (300) | 3.62 (92) | 6.77 (172) |

2.3 Technical data

| Technical data | Apolo-preformance | |
|------------------------------|-------------------|--------|
| Model (Units) | ES013 | ES025 |
| Capacity (Gallons) | 1.3 | 2.5 |
| Voltage (VAC) | 120 | 120 |
| Power at 120 VAC (Watts) | 1440 | 1440 |
| Maximum water pressure (Psi) | 150 | 150 |
| Weight Unpacked (lbs) | 12.5 | 20 |
| Amperage (Amps) | 12 | 12 |
| Phases | 1 | 1 |
| Temperature range (°F) | 55-145 | 55-145 |

3 Installation instructions

3.1 Mounting the heater

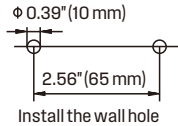
Wall mounting



NOTICE: Material damages!

Use screws that are suitable for the wall material and the weight of the heater.

1. Use a marker to mark the drilling position on the wall and confirm the marked position.



- Tips: When marking the position, ensure that the water heater is not less than 300 mm away from the wall to leave space for opening the electrical cover for maintenance in the future. The installation position should be as close to the water intake point as possible.
2. Use a 10mm impact drill to drill two holes in the wall. The depth of the holes should not be less than the length of the expansion screw straight rod.

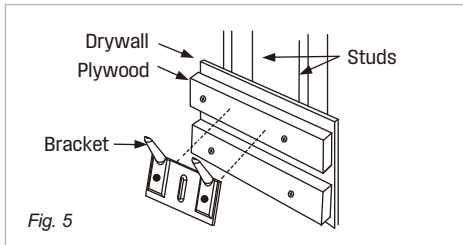


Fig. 5

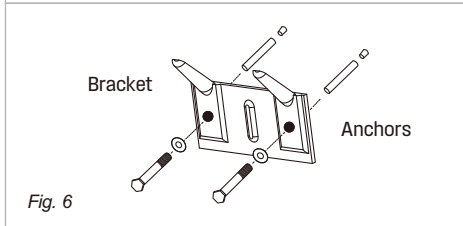


Fig. 6



CAUTION

The appliance must be hung securely to prevent personal injury and property damage from falling.

Floor mounting

- Heater can sit on floor.

3.2 Pipe connections

- Connect the cold water inlet pipe to the inlet tapping (marked with a blue ring).
- Ensure a isolation valve is installed on the cold water supply to the water heater.
- Connect the hot water outlet pipe to the outlet tapping (marked with a red ring).



CAUTION

To reduce the risk of excessive pressures and temperatures in this water heater:

- Install the supplied temperature and pressure protective equipment required by local codes but not less than a combination temperature and pressure relief valve certified by a nationally recognized testing laboratory that maintains periodic inspection of production of listed equipment or materials, as meeting the requirements for Relief Valves and Automatic Gas Shut-off Devices for Hot Water Supply Systems, ANSIZ21.22.

The supplied temperature and pressure relief valve is marked with a maximum set pressure (150 psi) that does not exceed the marked maximum working pressure of the water heater.

- Install the Temperature and pressure relief valve in the opening provided and marked for this purpose in the water heater.
- Orient it or provide tubing so that any discharge from the valve will exit within 6 inches above, or at any distance below, the structural floor, and cannot contact any live electrical part. The discharge opening must not be blocked or reduced in size under any circumstances.

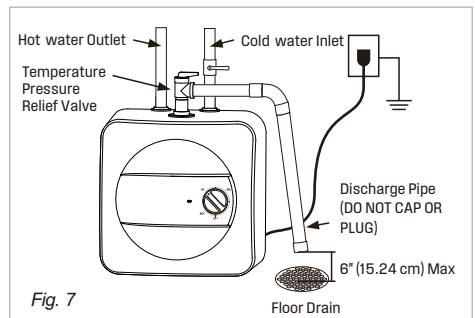


Fig. 7



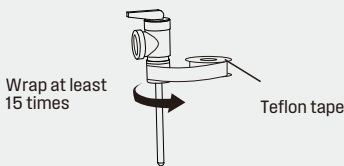
CAUTION

To reduce the risk of excessive pressures and temperatures in this water heater, install temperature and pressure protective equipment required by local codes and no less than a combination temperature and pressure relief valve certified by a nationally recognized testing laboratory that maintains periodic inspection of production of listed equipment or materials, as meeting the requirements for Relief Valves and Automatic Gas Shutoff Devices for Hot Water Supply Systems, ANSI Z21.22. This valve must be marked with a maximum set pressure not to exceed the marked maximum working pressure of the water heater. Install the valve into an opening provided and marked for this purpose in the water heater, and orient it or provide tubing so that any discharge from the valve exits only within 6 inches above, or at any distance below, the structural floor, and does not contact any live electrical part. The discharge opening must not be blocked or reduced in size under any circumstances.



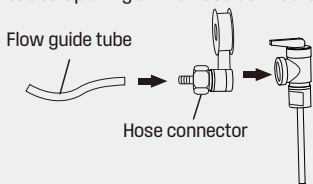
NOTICE

Wrap the Teflon tape around the threaded opening of the pressure relief valve at least 15 times (approximately 47.2" (120 cm) in length) in order to prevent water leakage.



NOTICE

Wrap at least 8 turns (approximately 25.2 inches (65 cm)) of Teflon tape around the threaded opening of the hose connector.



National Plumbing codes may require a drain pan for the water heater installation. Failure to install one is the sole responsibility of owner and/or installer. Reference UPC (Uniform Plumbing Code), or IPC (International Plumbing Code).

3.3 Closed system thermal expansion

Periodic discharge of the temperature and pressure relief valve or failure of the element gasket may be due to thermal expansion in a closed water supply system. The water utility supply meter may contain a check valve, backflow preventer or water pressure reducing valve which will create a closed water system.

During the heating cycle of the water heater, the water expands causing pressure inside the water heater to increase.

The temperature and pressure relief valve may discharge hot water under these conditions which results in a loss of energy and a build-up of lime on the relief valve seat.

The temperature and pressure relief valve may discharge hot water under these conditions which results in a loss of energy and a build-up of lime on the relief valve seat.

To prevent this from happening, there are two recommendations:

- Install a diaphragm-type expansion tank that is suitable for potable water on the cold water supply line. A minimum 0.5 gallon expansion tank should be used.

Contact the local water supplier or plumbing inspector for information on how to control this situation. Do not plug the temperature and pressure relief valve.

3.4 Electrical Connection



WARNING

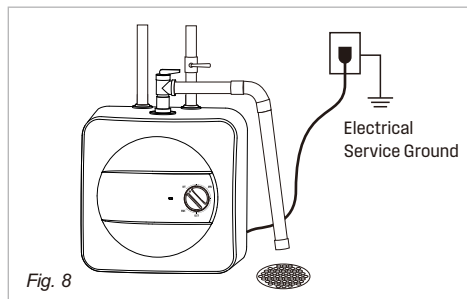
Working on an energized circuit can result in severe injury or death from electrical shock.

**NOTICE**

Do not turn electrical power on unless you are sure all of the air is out of the tank and the tank is completely full of water. If power is applied before the tank is completely full of water, the element will burn out (Dry Fire).

**DANGER**

If user's water pressure is high, TP valve may relieve pressure under high pressure during the heating process, water temperature will be over 145 °F after pressure relief, which can cause severe burns instantly or death from scalds. Please take attention!



4 Use

4.1 Starting and testing

**CAUTION**

DO NOT supply power to water heater until filled with water.

To fill the heater:

- Open supply valve for water heater to fill with water.
- Open hot water tap(s) supplied by the water heater to purge air out of the system. Once air is purged, close hot water tap.
- Visually check for any leaks.

Turning heater on

For models which are not fitted with a switch:

- Supply power to the water heater by plugging in the power cord.

If the light does not come on, turn the control knob in a clockwise direction.

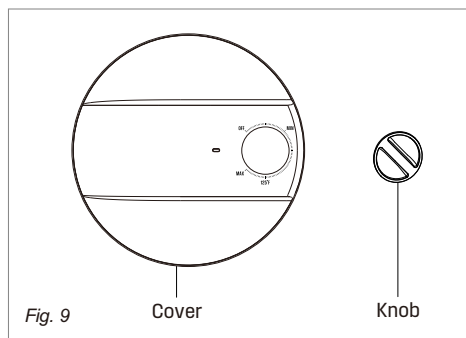
The light will come on until water temperature has reached the thermostat temperature setting. The light will come back on any time the water temperature inside the tank drops below the thermostat setting.

4.2 Temperature setting

To fill the heater:

The temperature of the hot water is adjusted by rotating the knob (Fig. 9) located on the front cover. Temperature range is 55-145 °F.

- Turn the knob clockwise to increase temperature.
- Turn the knob counter-clockwise to decrease temperature.



5 Maintenance



CAUTION

Do not attempt to repair this water heater yourself. Call a service person for assistance. Always turn off the power supply to the heater prior to servicing or draining the heater.



NOTICE

For most of these operations, the water will have to be drained from the heater. For all of these operations the cord should be disconnected and the front cover removed.

5.1 Removing the cover

- Remove knob (Fig. 9) which covers the Phillips screw, and unscrew the Phillips screw.
- The cover (Fig. 9) can now be removed by slightly rotate. When reassembling, work in the opposite way being careful to insert the tongue of the cover into the slot.

5.2 Draining the heater

If the heater has been installed with flexible hoses:

- Shut off the power supply.
- Turn the heater upside down over a sink to drain the water out of it.

5.3 Inspecting the anode rod

If the heater has been installed with flexible hoses:

The purpose of the anode rod (Fig. 11) is to protect the tank against corrosion. It is critical that the anode rod be inspected once a year to determine whether it requires replacement. To access the anode rod, the heating element must be removed (see Section 5.4 Removing the heating element). Upon inspection, the anode rod surface should appear smooth. If the rod surface appears pitted, bumpy, rusty, or if the rod is missing completely, then it must be replaced.

To access the anode rod:

- Remove the heating element (see Section 5.4 Removing the heating element).

Original anode rod sizes

- Length 4.72" Diameter 0.787"

Certain installations may require more frequent replacement of the anode rod:

- recirculation applications
- poor water quality
- galvanic/electrolytic corrosion
- high flow applications

In the event of poor water quality, we recommends consulting a local water treatment professional for water treatment options. Always ensure the water heater is grounded. Damage resulting from poor water quality or failure to replace the anode rod is not covered under the manufacturer's warranty. For additional questions, please call Technical Service.

5.4 Removing the heating element

- Take out the power cord from the plastic part.
- Use a cross screwdriver to unscrew the 3-in-1 cross screw on the heating element terminals of red wire and blue wire .
- Remove the wire nail and press the thermostat capillary and the thermal cut-out capillary, and take it out of the blind tube opening.
- Loosen the 5 nuts and spring washer on the heating element pressing plate with the sleeve, and take out the heating element pressing plate.
- Remove heating element.

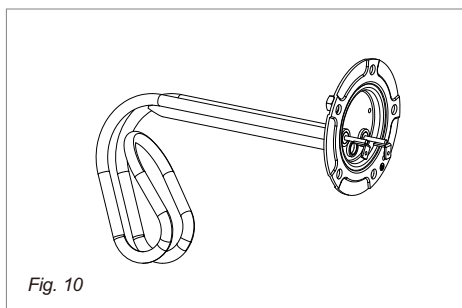


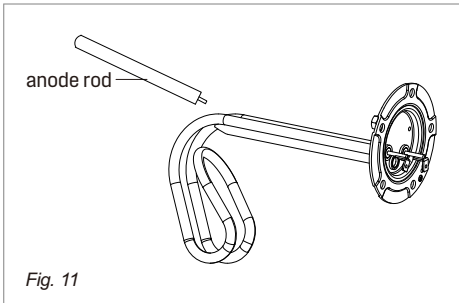
Fig. 10

5.5 Descaling the heating element

Scale deposits can affect the heating capability of the element.

Heavy scale can even cause damage to the element. The element can be descaled either chemically or manually:

- Soak the element in white vinegar or other descaling solution.
- Once descaled, rinse well with fresh water, to which you should add some baking soda.
- or-
- Once the element has dried, use a soft brush (non metallic to prevent damaging the stainless steel sheath) on element.
- Brush the dried mineral off.
- Reinstall the element with gasket and make the wire connections.



NOTICE

Make sure the tank has been refilled with water before restoring power.

6 Replacement of parts

6.1 Changing the anode rod

- Turn off the power supply and drain the heater (5.2 Draining the heater).
- Remove heating element (see previous section).
- Unscrew anode rod from threaded connection.
- Remove and replace the anode rod.
- Reinstall heating element.
- Refill tank with water before restoring power.

6.2 Changing the heating element

- Turn off power supply and drain the heater (see Draining the Heater).
- Remove the heating element (see section on Removing the Heating Element).
- Install new element with gasket, making sure the gasket and element are positioned correctly. Tighten the retaining nuts and make the wire connections.
- Ensure that the thermostat temperature sensor is inserted into the well located on the element assembly and secured with black rubber grommet.
- Refill tank with water before restoring power.

6.3 Changing the thermostat

- Turn off power supply.
- Disconnect the 2 wire connectors on thermostat.
- Loosen the two brass screws at right side of thermostat and pull wires out.
- Remove thermostat temperature sensor from well located in element assembly.
- Unscrew and remove the two Phillips screws holding the thermostat onto the tank.
- Install new thermostat and re-attach wiring and screws.
- Ensure that the thermostat temperature sensor is inserted into the well located on the element assembly and secured with black rubber grommet.

7 Troubleshooting

7.1 Fault Assessment and Troubleshooting

| Problem | Solution |
|------------------------|--|
| Water does not get hot | Make sure the power supply is on and working. |
| | If light does not come on, check that the high limit reset button is pushed in; follow steps in section 7.1. |
| | If the indicator light works properly but temperature does not get hot at the tap, test for a plumbing crossover; shut off cold supply to heater and open hot water tap. There should be no water flowing. Any continued flow indicates a crossover which will effect the temperature and will need to be corrected. |
| Light not on | Call a qualified service technician to test the resistance of the heating element (8-10 ohms). Heating element should be replaced if readings are outside these values. |
| | If the light does not come on, but water gets hot, check for faulty bulb. |
| Brown water | Check high limit reset button; follow steps in section 7.1. |
| | Brown or rusty water indicates a "spent" anode rod and possible deterioration of the tank body. Inspect the tank for leaks. Check anode rod (see section on changing the anode rod). |
| Leaking | Check water fittings and T & P fitting on top of tank. |
| | Remove front cover and inspect heating element gasket. |
| | If tank is leaking call for warranty claim if still within warranty period. |
| | Check anode rod (see section on changing the anode rod). |

7.2 Resetting High Limit Switch

Occasionally, the high temperature limit shut off device may trip the reset. This occurs when water temperature exceeds 190 °F. The shut off device may also trigger from a power outage or electrical storm.

To reach the thermostat:

- Disconnect power cord and remove installation cover.
- Firmly press reset button (Fig. 12) with the tip of a ball point pen or similar object.

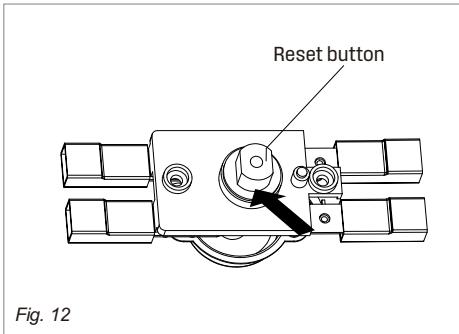


Fig. 12

A click indicates the reset was tripped.

- Reconnect power

IMPORTANT:

- Check the operation of the thermostat: Turn temperature dial from high to low.
- If the red light does not go off on low setting: Turn off power supply and call a service person to replace the thermostat.
- If the red light does go off the thermostat is working well: Place dial setting to desired setting.



NOTICE

A lower setting is more economical and reduces the risk of scalding.

- Put back cover plate.



CAUTION

Call a technician if the high limit needs to be reset frequently.

8 Interior components diagram

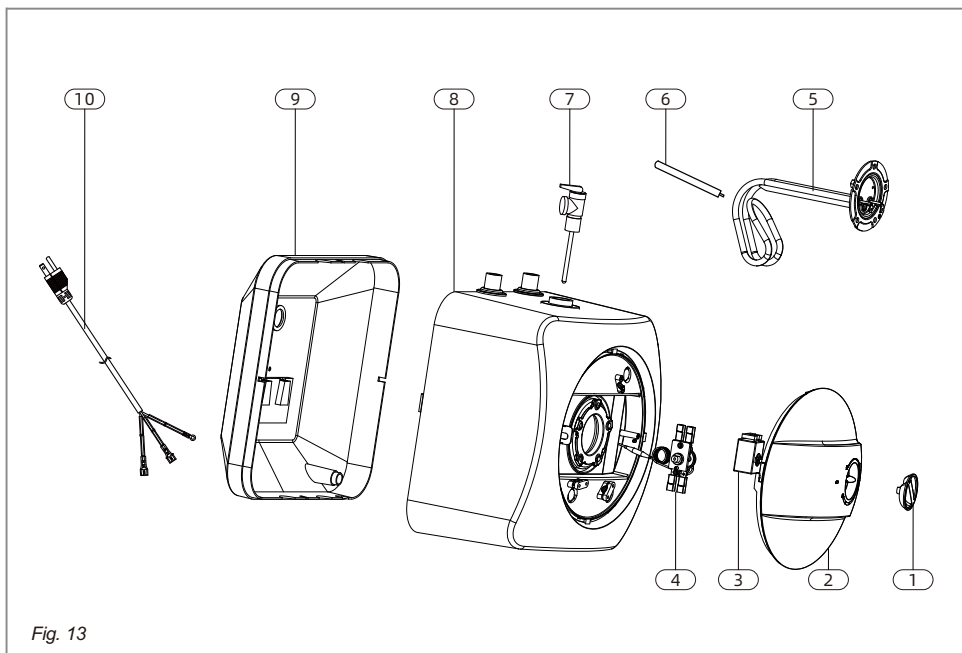



Fig. 13

| Part | Description |
|------|---|
| 1 | Knob |
| 2 | Plastic cover |
| 3 | Thermostat |
| 4 | Temperature controller |
| 5 | Heating element |
| 6 | Anode rod |
| 7 | Valve T&P 3/4 (attached in the product package) |
| 8 | Outer body |
| 9 | Bottom cover |
| 10 | Power cable |



Tel: +1 833 566 1779

Email: support@tl.westinghouse.com

 Westinghouse Electric Corporation
4000 Town Center Blvd, Suite 210, Canonsburg, PA 15317