

Assembly Instructions for Dunnage Rack

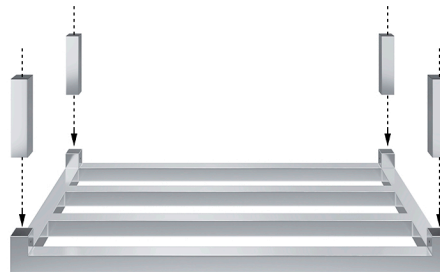
1. Prepare for Assembly

- **Clear a space:** Find a clean, open area where you can lay the dunnage rack flat.
- **Gather your tools:** You will need the dunnage rack base, legs, screws, and a screwdriver that matches the provided screws.



2. Position the Rack

- **Lay the back of the rack on the floor** with the openings for the legs facing upwards.



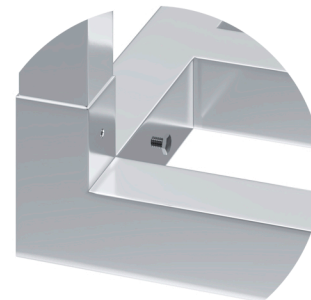
3. Insert the Legs

- **Insert each leg** into its corresponding opening.
- Ensure **all legs are pushed in** as far as possible.



4. Secure the Legs

- **Screw in the legs** one by one after inserting them.
- Tighten each screw securely but avoid over-tightening to prevent stripping the screws.



5. Final Check

- **Stand the rack upright.**
- Gently shake the rack to check that the legs are stable and securely attached.



Additional Tip

- If the legs are difficult to insert, **gently tap them** with a rubber mallet for ease.