



Scan For  
More Help

READ AND FOLLOW ALL INSTRUCTIONS BEFORE OPERATING YOUR TWINKLER LIGHT. SAVE THIS MANUAL FOR FUTURE REFERENCE.

Part	Quantity
Three-Part Yard Stake	1
Remote Control	1
Twinklers LED Light With Power Cord	1
Gutter Hook	1
S-Hook	1
Reusable Cable Ties	2
Tree Topper Clips	2

#### Remote Specification

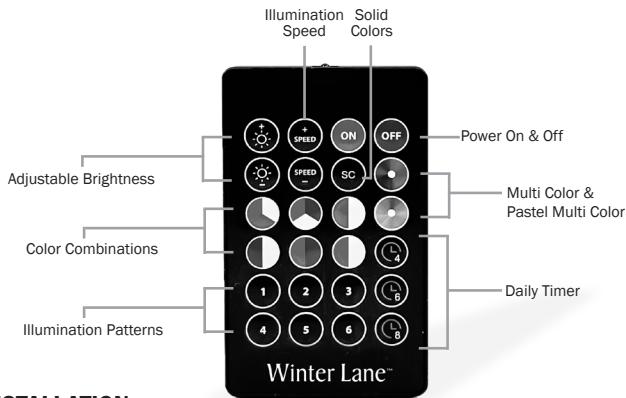


Figure 1

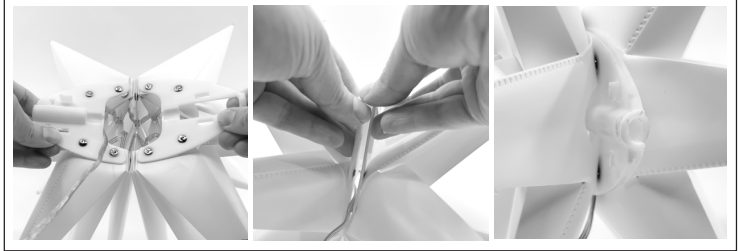


Figure 2



Figure 3



Figure 4



#### INSTALLATION

Unfold the Twinkler, pulling both plastic support bodies toward each other. Fully extended the Twinkler so the support bodies are nearly touching and aligned exactly together. Push the two tabs protruding from one side into the corresponding slots on the other (**Figure 1**). Once the Twinkler has been assembled, unwind the power cable and connect to a source of 120 V electric power.

#### YARD:

Each Twinkler includes a yard stake. Assemble the yard stake by sliding the pointed stake end over the end of one of the tubular segments. Assemble the stake to full length by sliding the male end of one segment into the female connector of the other segment. Insert the assembled stake into the ground in a location of your choosing. Once you have your stake in the ground, slide the male end of the stake into the female cylindrical receptacle of the Twinkler's support body (**Figure 2**).

A small, inverted hook is located at the top of the base of each spike - slide the lead cable through it and pull taut to align along the length of each spike (**Figure 3**). Use two of the cable ties to fasten the lead cables in place. PLEASE NOTE: The cable ties can be opened and reused by depressing the small lever located on the lock and sliding the cable out.

#### HANGING:

Twinklers can also be hung from fixed and secure locations such as eaves, tree limbs and pergolas. We have included a black S shaped hook, (S-Hook), for this purpose. To use, simply suspend the S-Hooks by sliding the large round hole over a branch, protruding screw or nail. Once the S-Hook is in place, twist the cable leading to the Twinkler through and around the bottom loop of the S until taut; you may have to twist it more than once depending on where it is located.

A second hook is also included to attach to gutters. To use, simply place the larger end of the hook over the edge of a gutter. Once in place, twist the cable leading to the Twinkler through and around the bottom loop of the hook until taut; you may have to twist it more than once depending on where it is located.

#### CHRISTMAS TREE TOPPER:

Two clips have been included so the Twinkler can be used as tree topper. Insert the non-pointed segment of the stake into your Twinkler (**Figure 4**). Attach the clips around the stake and the top of your tree; more than one branch may be needed to ensure a strong connection.

#### ACTIVATION/FUNCTION:

Your Twinklers can be activated with the included remote control. Before first use, remove the insulator strip protruding from the remote's battery compartment. To use the remote, point it toward the Twinkler and select the button(s) associated with the function(s) you would like to use.

**DO NOT LOSE YOUR REMOTE - full functionality is only available via your remote control.**

Your remote control has the following functions:

**ON** - Turns your light on.

**OFF** - Turns your light off.

**SC** - Solid Colors - Twinklers can illuminate in the following solid colors - White, Red, Orange, Yellow, Green, Blue, Purple & Teal. To select a color, press the SC button repeatedly until you reach the color of your choice.

**Color Combination Buttons** - In addition to solid colors, you can choose different color combinations to fit the theme of your holiday or event. The available combinations are, in sequence from top to bottom/left to right Multicolor, Red, White & Blue, Green, Red & White, Blue & White, Pastel Multicolor, Green & White, Red & Green & Red & White.

**Timer Functions** - Twinklers have daily timers that illuminate automatically at a time of your choosing and turn off after a predetermined time. The time the lights will remain on are four hours, (4), six hours, (6), & eight hours, (8). To activate, choose the illumination mode and the amount of time you would like the lights to illuminate, point the remote at the Twinkler and press the corresponding timer button when you would like the lights to turn on. The lights will turn off automatically after the duration chosen and restart the next day at the same starting time.

**PLEASE NOTE: If you change either the color or flashing pattern after setting the timer, the timer will be canceled. Your timer MUST be reset to function properly after changing either the color or flashing pattern.**

**Numbered Buttons** - Your Twinkler has six numbered buttons that correspond to the following illumination patterns:

**1** - Twinkling - Segments illuminate & flash.

**2** - Progression - Segments illuminate sequentially.

**3** - Sequential Flashing - Segments fill toward the point ends in sequence and then flash.

**4** - Sequential Slo-Glow - Segments fill toward the point ends in sequence and then slowly fade in and out.

**5** - Sequential Glow - Segments fill toward the point ends in sequence and then fade in and out.

**6** - Random Colors/Flash - Light segments randomly illuminate, fill and flash and glow in multiple colors.

**PLEASE NOTE: If you do not select one of the illumination patterns but choose one of the color options your Twinkler will remain steady on in the color or combination chosen.**

**+ SPEED** - Increases the speed lights move & illuminate at.

**- SPEED** - Decreases the speed lights move & illuminate at.

**+ SUN** - Increases the brightness of your Twinkler Lights.

**- SUN** - Decreases the brightness of your Twinkler Lights.

**IMPORTANT:** Your Twinklers use LED's with red, green and blue, (RGB), tints. The individual levels of red, green and blue light change in combination to create new colors and change light combinations. This process sometimes creates a brief color "bleed" in which tints of green or pink briefly appear. To alleviate this issue, use the + Speed button to increase the rate your Twinkler flashes at.

### **CHANGING YOUR REMOTE BATTERY:**

If your remote control doesn't function properly its battery likely needs to be replaced. The battery is in a sliding battery tray located on the rear bottom of your remote control. To open, press in the RELEASE button located on the right-hand side of the battery tray, slide out the tray, and remove the old battery. Insert a new CR2025 button cell battery according to the polarity graphic located on the rear of your remote and return tray to the closed position.

### **CARE**

1. DO NOT DISPOSE OF INSTRUCTIONS – KEEP FOR FUTURE USE.
2. Fold Twinklers after use for safe storage.
3. Disassemble Stakes for safe storage.
4. CAREFULLY wind-up Twinkler cords for safe storage.
5. Store all Twinkler parts together.
6. Remove the remote control's battery if not in use for extended time periods.
7. Dispose of old batteries according to the recycling regulations of your country, state, county or community.

### **CAUTION**

1. NEVER disassemble or other wise alter or change the product.
2. WARNING: Risk of electronic shock if used Improperly.
3. Insert into outlets located greater than 1' above ground surface.
4. Do not place product or cables in standing water.
5. Do not secure the wiring of the product with staples or nails, or place on sharp hooks or nails. Install only using the mounting means provided.
6. Do not hang objects from light source, cable, or wire.
7. Do not close doors or windows on the product's cable or extension cords as this may damage the wire insulation.

### **IMPORTANT SAFETY INSTRUCTIONS**

When using electrical products, basic precautions should always be practiced including the following:

#### **1. READ AND FOLLOW ALL SAFETY INSTRUCTIONS.**

**2. Read and follow all instructions that are on the product or provided with the product.**

**3. Do not use an extension cord.**

**4. Do not install or use within 10 feet of a pool.**

**5. Do not use in a Bathroom.**

**6. WARNING: Risk of Electric Shock. When used outdoors, install only to a covered Class A GFCI protected receptacle that is weatherproof with the power unit connected to the receptacle.**

**If one is not provided, contact a qualified electrician for proper installation. Ensure that the power unit and cord do not interfere with completely closing the receptacle cover.**

**7. WARNING: Risk of Fire. Installation involves special wiring methods to run wiring through a building structure. Consult a qualified electrician.**

**8. WARNING: Not for use with receptacles that are weatherproof only when the receptacle is covered (attachment plug cap not inserted and receptacle cover closed).**

**SAVE THESE INSTRUCTIONS – This manual contains important safety and operating instructions for power units.**

This device complies with Part 15 of the FCC Rules. Operation is subject to the following two conditions: (1) this device may not cause harmful interference, and (2) this device must accept any interference received, including interference that may cause undesired operation.

"Please note that changes or modifications of this product is not expressly approved by the party responsible for compliance could void the user's authority to operate the equipment."

NOTE: This equipment has been tested and found to comply with the limits for a Class B digital device, pursuant to Part 15 of the FCC Rules. These limits are designed to provide reasonable protection against harmful interference in a residential installation. This equipment generates, uses and can radiate radio frequency energy and, if not installed and used in accordance with the instructions, may cause harmful interference to radio communications. However, there is no guarantee that interference will not occur in a particular installation.

If this equipment does cause harmful interference to radio or television reception, which can be determined by turning the equipment off and on, the user is encouraged to try to correct the interference by one or more of the following measures:

## **⚠ WARNING**

- **INGESTION HAZARD:** This product contains a button cell or coin battery.
- **DEATH** or serious injury can occur if ingested.
- A swallowed button cell or coin battery can cause **Internal Chemical Burns** in as little as **2 hours**.
- **KEEP** new and used batteries **OUT OF REACH** of **CHILDREN**
- **Seek immediate medical attention** if a battery is suspected to be swallowed or inserted inside any part of the body.



- a) Remove and immediately recycle or dispose of used batteries according to local regulations and keep away from children. Do NOT dispose of batteries in household trash or incinerate.
- b) Even used batteries may cause severe injury or death.
- c) Call a local poison control center for treatment information
- d) The compatible battery type CR2025.
- e) The nominal battery voltage 3.0V.
- f) Non-rechargeable batteries are not to be recharged.
- g) Do not force discharge, recharge, disassemble, heat above 75 degree or incinerate. Doing so may result in injury due to venting, leakage or explosion resulting in chemical burns.
- h) Ensure the batteries are installed correctly according to polarity (+ and -).
- i) Do not mix old and new batteries, different brands or types of batteries, such as alkaline, carbon-zinc, or rechargeable batteries.
- j) Remove and immediately recycle or dispose of batteries from equipment not used for an extended period of time according to local regulations.
- k) Always completely secure the battery compartment. If the battery compartment does not close securely, Stop using the product, remove the batteries, and keep them away from children.

### **CONTAINS COIN BATTERY**



### **30 DAYS LIMITED WARRANTY:**

FLIPO GROUP warrants to the original purchaser, when used in North America only, that this product shall be free of defects in material and workmanship. This warranty applies within 30 days of the original purchase with normal home use. This warranty does not apply for commercial use of this product. Use outside of North America is not covered by this warranty.

During the warranty period, we will at our option, repair or replace this product without charge, which shall be the consumer's sole remedy. ALL RETURNS must be accompanied by a Return Authorization Number, which is issued by the Customer Service Department of Flipo Group. Please contact Customer Service BEFORE returning any item. Once you have obtained a Return Authorization Number, the product must be returned with a clear copy of the proof of purchase, showing place and date of purchase, postage and insurance prepaid to:

Flipo Group  
613 First Street  
La Salle, IL 61301

This warranty does not cover installation, adjustments in the home, nor damage due to accidents, misuse, abuse, fire or other acts of God, incorrect line voltage, damage to other equipment caused by improper installation, unauthorized or improper modification. This warranty gives you specific legal rights and you may also have other rights that vary from state to state.



Manufactured by Flipo Group Limited La Salle, IL • flipo.com • Questions or Comments? Call: (815)223-9942 • Email: info@flipo.com • Fax: (815) 200-6007  
**MADE IN CHINA**