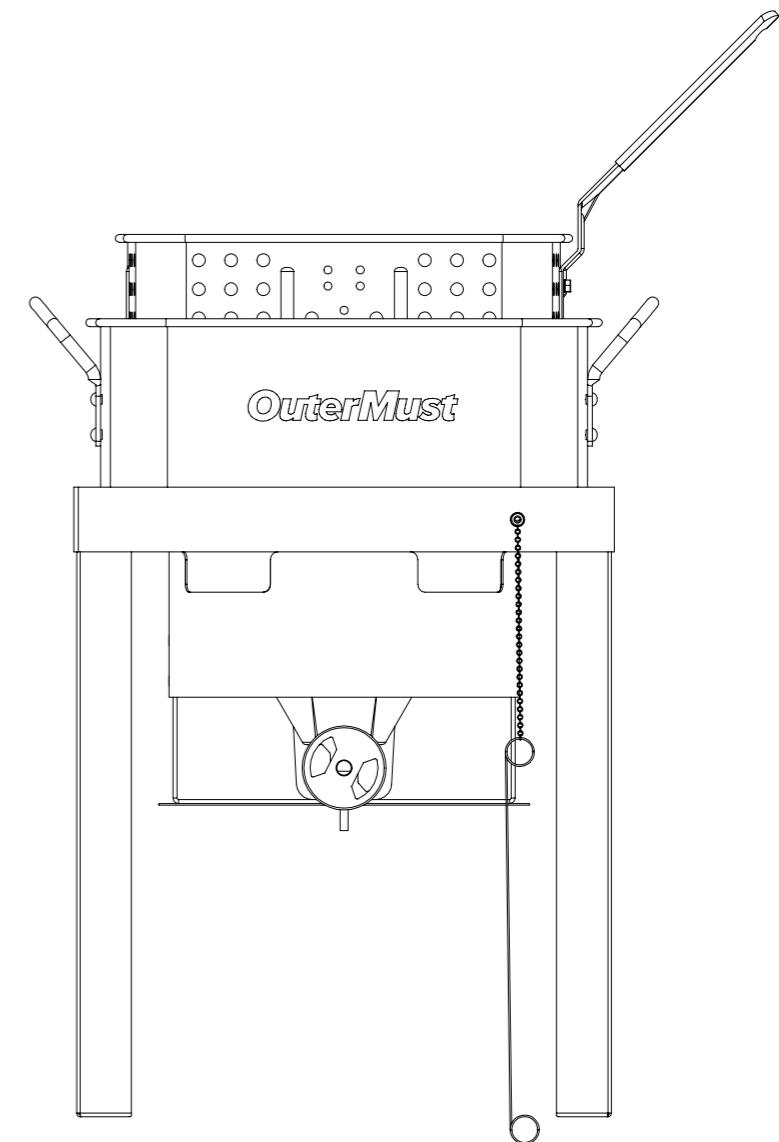


FISH AND WING FRYER



ASSEMBLY INSTRUCTIONS INSTRUCCIONES DE ENSAMBLAJE

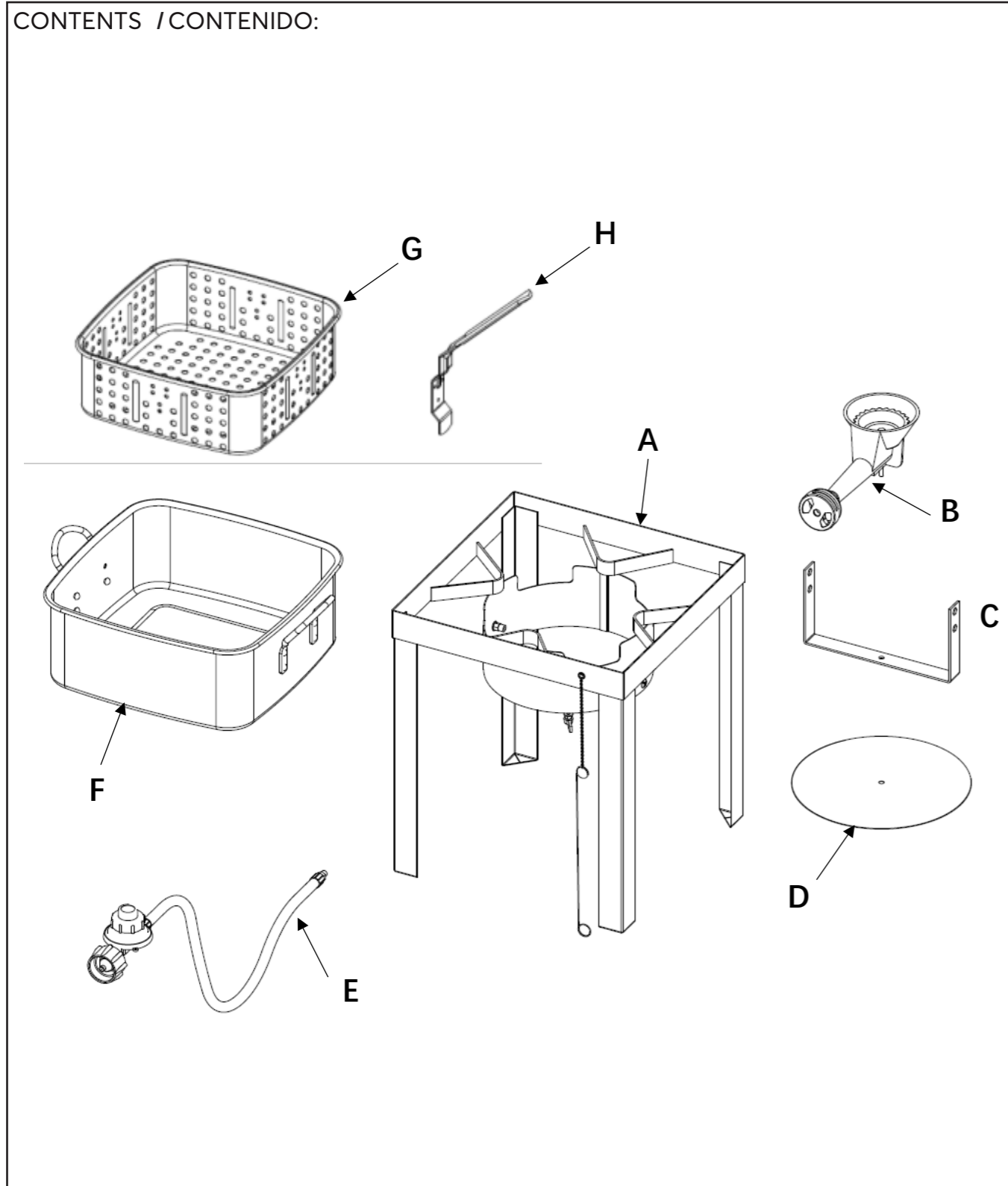
MODEL NUMBER: FF12-01
NÚMERO DE MODELO: FF12-01



READ ALL SAFETY WARNINGS AND INSTRUCTIONS IN THE OWNER'S MANUAL BEFORE ASSEMBLING OR OPERATING YOUR GRILL.

LEA TODAS LAS ADVERTENCIAS DE SEGURIDAD E INSTRUCCIONES DEL MANUAL DEL PROPIETARIO ANTES DE MONTAR O PONER EN FUNCIONAMIENTO SU PARRILLA.

CONTENTS / CONTENIDO:



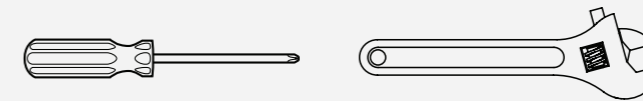
PARTS DIAGRAM

Item	Description	Qty.
A	Stove Stand	1
B	Burner	1
C	Burner Mounting Bracket	1
D	Heat Shield	1
E	Regulator and Hose	1
F	Deep Fryer Pot	1
G	Deep Fryer Basket	1
H	Deep Fryer Basket Handle	1

▲ One person assembly recommended

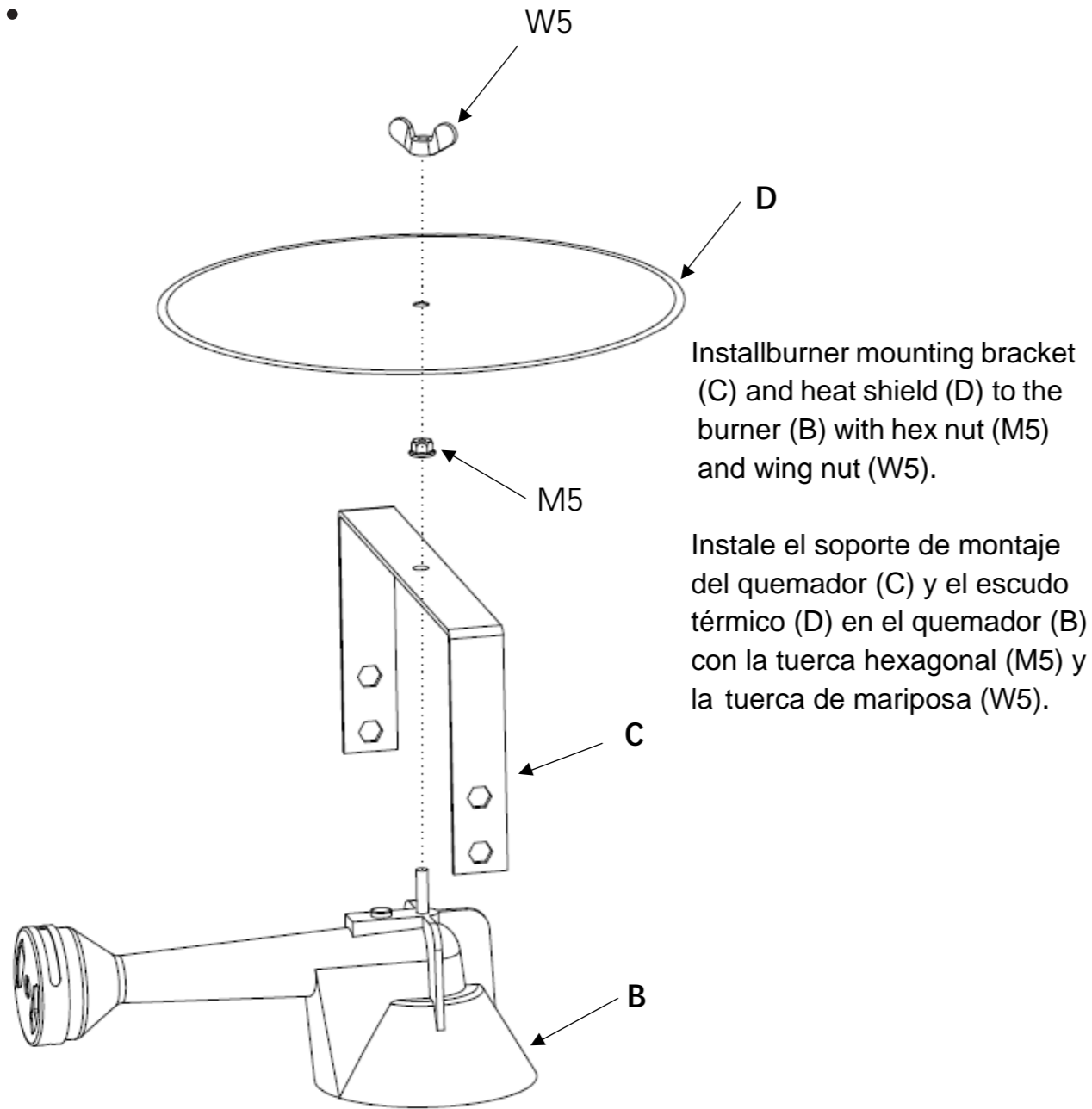
▲ Se recomienda el montaje por una persona

Tools required:
Herramientas necesarias:

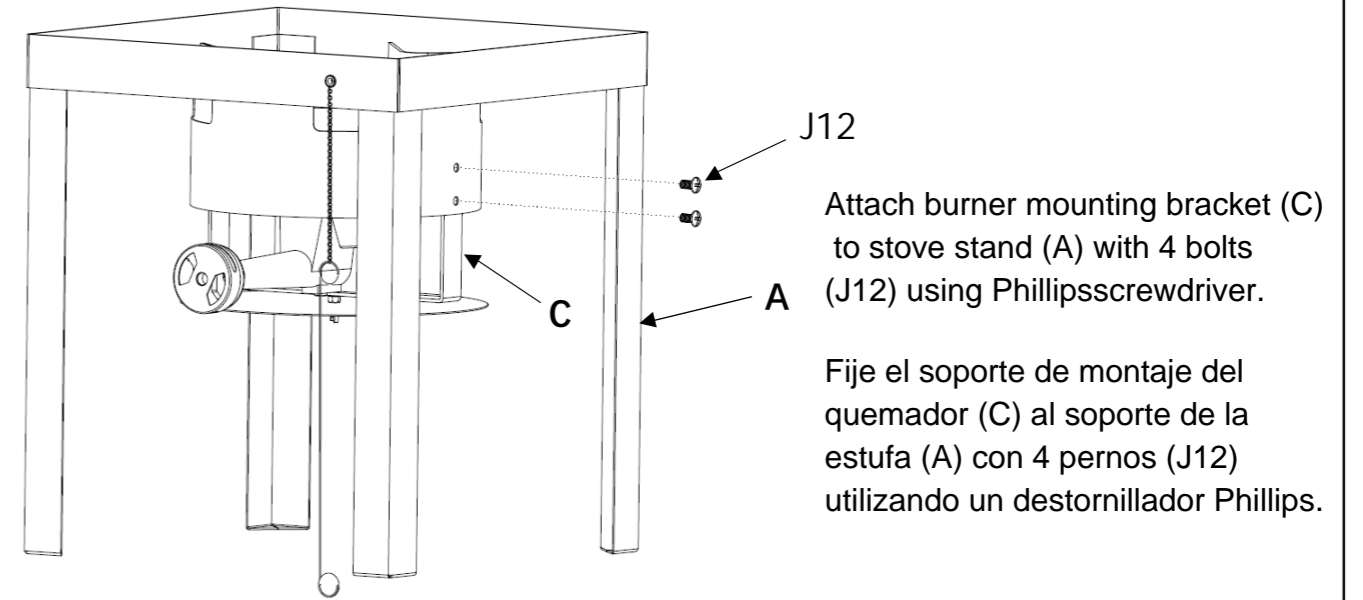


Part#	Diagram	Description	Qty.
M5		Hex nut	1
W5		Wing nut	1
J12		M6*12 screw	4
J10		M5*10 screw	3
K5		M5 flat washer	3
L5		M5 lock washer	3
H5		Hex nut	3

1.



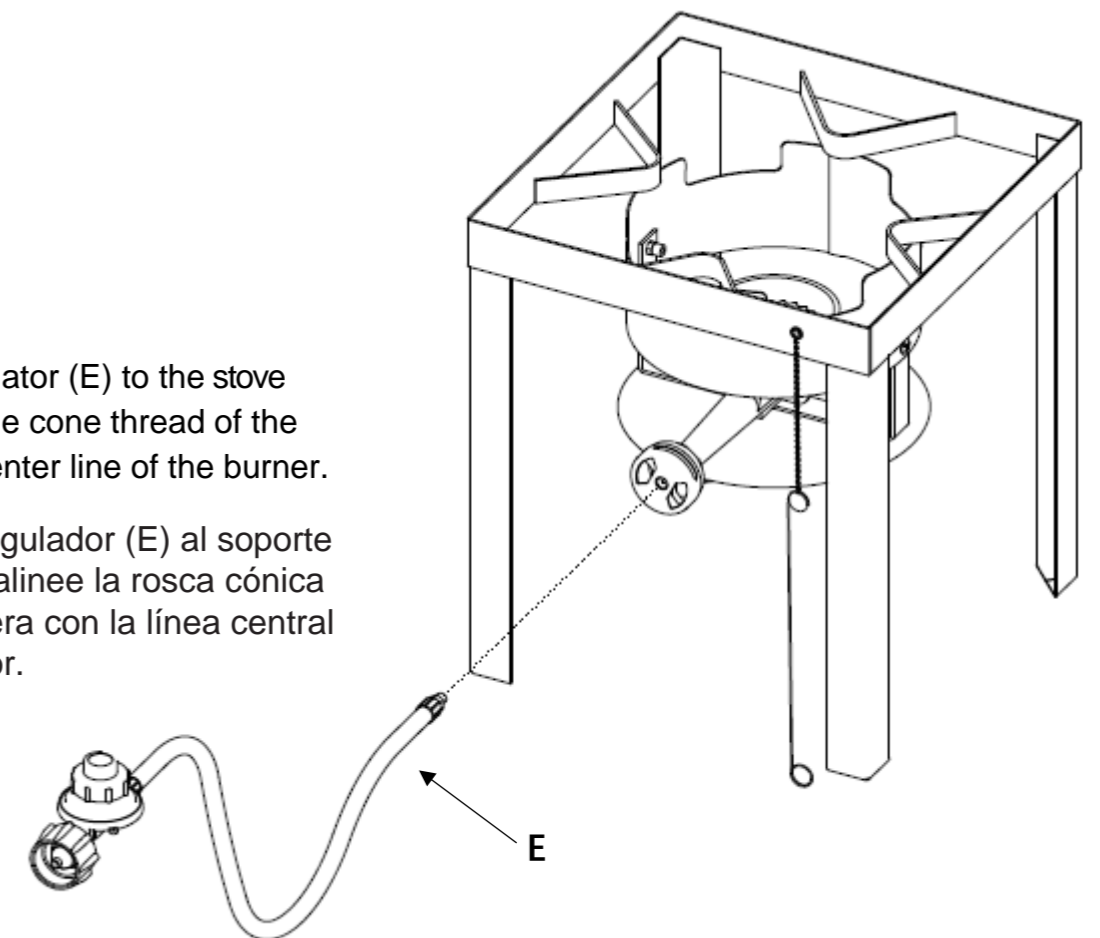
2.



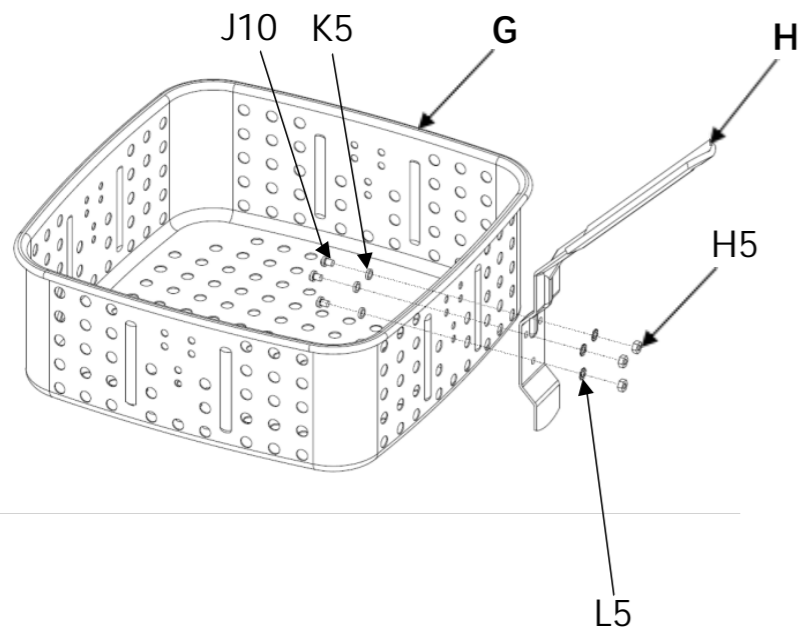
3.

Connect regulator (E) to the stove stand, align the cone thread of the hose to the center line of the burner.

Conecte el regulador (E) al soporte de la estufa, alinee la rosca cónica de la manguera con la línea central del quemador.



4.



Connect basket handle (H) to the deep fryer basket, with 3 set of fasteners including screw, flat washer, lock washer, hex nut.

Conecte el mango de la canasta (h) a la canasta de la freidora con tres juegos de sujetadores (incluidos tornillos, arandelas planas, arandelas de bloqueo, tuercas hexagonales).