

2476520



# COUNTYLINE®

## ATV SPRAYER

**Model 25GALATVS-CL  
25-Gallon**



**DO NOT RETURN TO THE STORE**

Please call **888-376-9601** or visit **[www.tractorsupply.com](http://www.tractorsupply.com)** if you are missing any parts, having trouble assembling, or have any questions regarding the safe operation of this product.

Tractor Supply Company, 5401 Virginia Way Brentwood, TN 37027

Due to our ongoing product improvement process, product specifications may change without notice.

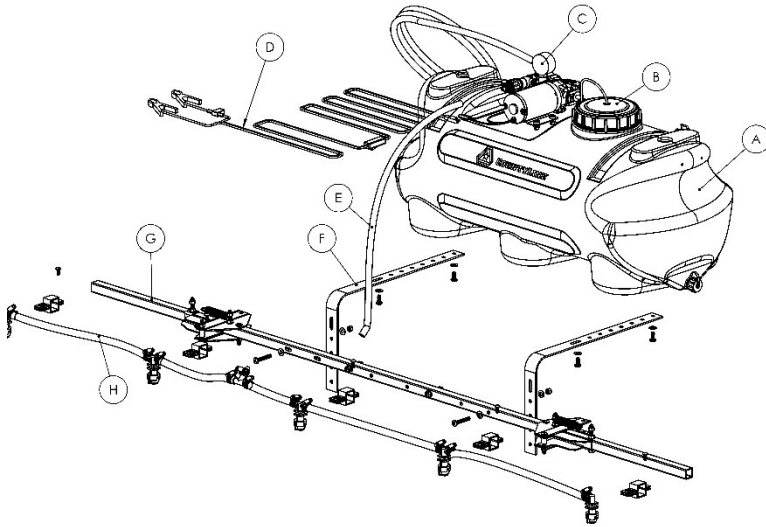
Form No. 101166 (Rev. 1/21/25)

## Important Information

25GALATVS-CL Sprayer has been engineered and customized to be the most reliable long lasting, ATV sprayer in the market. Please read the manual before using your pump and sprayer.

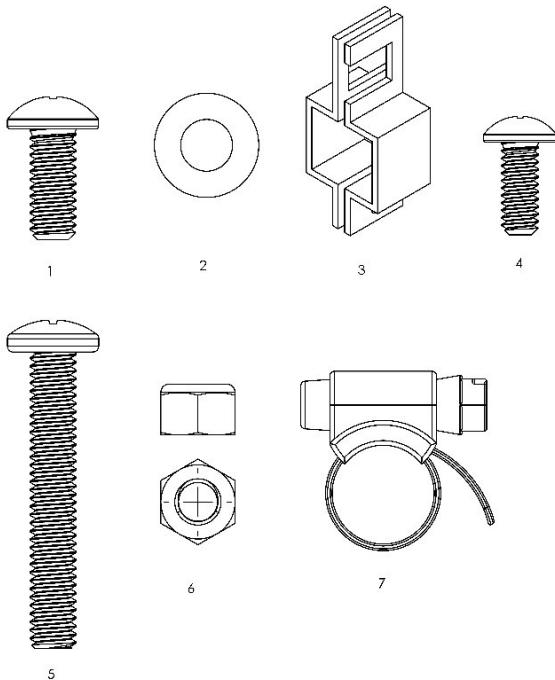
Safe operation and regular maintenance will ensure your sprayer works efficiently for years. Keep this manual in a convenient place for future references.

## Carton Contents



ITEM NO.	PART#	DESCRIPTION	QTY
A	100037	25 GALLON SPRAYER	1
B	101157	TANK LID & LANYARD	1
C	100012	PRESSURE GAUGE	1
D	100035	WIRE HARNESS	1
E	100056-1	HOSE	1
F	100032	MOUNT BRACKETS	2
G	101168	NOZZLE BOOM	1
H	-	NOZZLE HARNESS	1
J	-	HARDWARE BAG	1

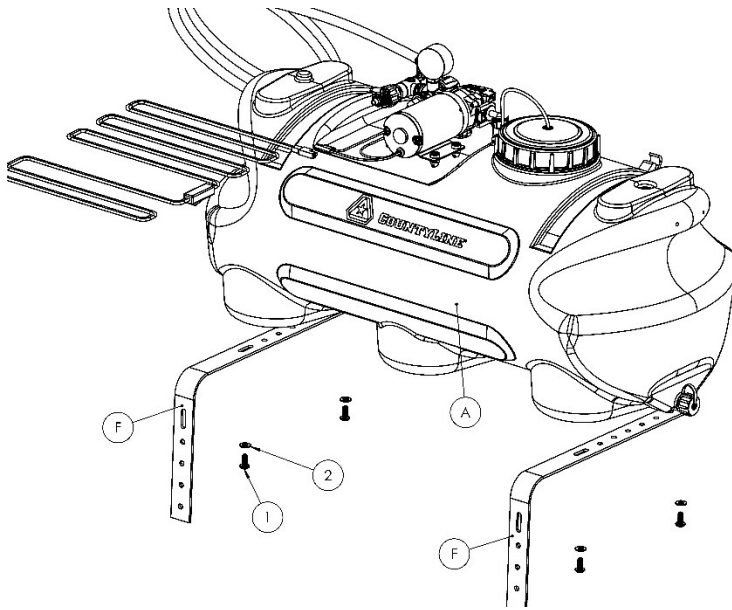
Hardware bag contents (J):



ITEM NO.	Part#	DESCRIPTION	QTY
1	101185	BOLT, 5/16-18", .75 L, PAN HEAD, PHIL	4
2	1044	5/16" WASHER	6
3	100028	BOOM CLAMP (2x Plates)	5
4	101186	BOLT, 1/4-20", .625 L, PAN HEAD, PHIL	5
5	101187	BOLT, 5/16-18", 2.00 L, PAN HEAD, PHIL	2
6	1275	5/16" NUT	2
7	100043	HOSE CLAMP	2

# Sprayer Assembly

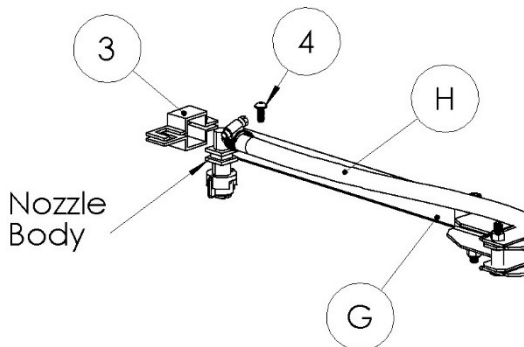
Tools needed: Phillips Head Screwdriver



Step 1. Assemble four 5/16" X 3/4" Bolts (#1), four 5/16" washers (#2), two Mount Brackets (F) and the Sprayer (A).

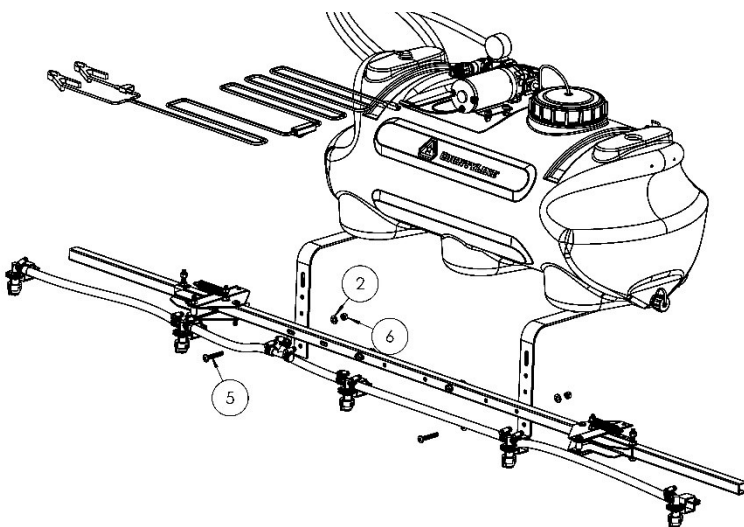
Take four 5/16"x3/4" Bolts (#1), attach a 5/16" Washer (#2) to each bolt, insert the bolts into the Bracket holes (F), and fasten them to the Sprayer tank (A) bottom inserts.

**Do not overtighten.**



Step 2. Assemble Nozzle Harness, Nozzle Boom, five Boom Clamps (#3), and five 1/4"x5/8" (#4) Bolts.

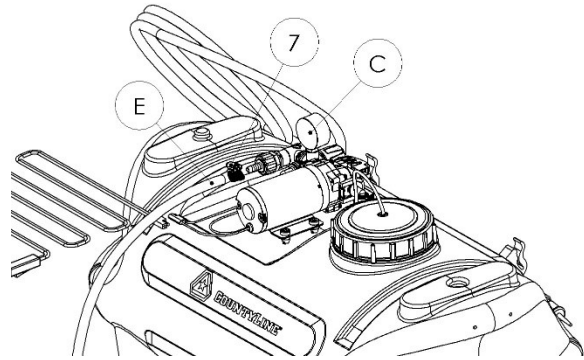
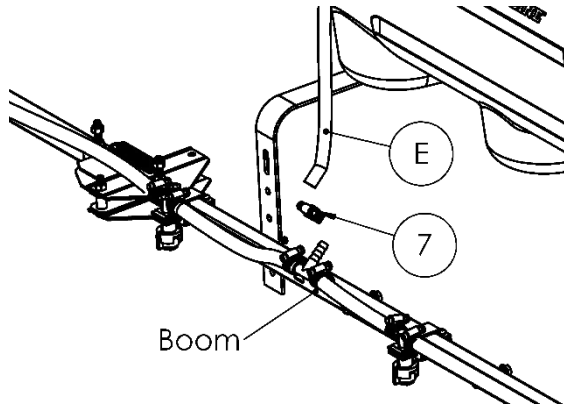
Take the Boom Clamp (#3), slide them inside the groove of the Nozzle Body and secure with the 1/4"x5/8" (#4) Bolt. Repeat the procedure for the remaining four nozzles.



Step 3. Assemble two 5/16"x2" Bolts (#5), two 5/16" Washers (#2), and two 5/16" Nuts (#6).

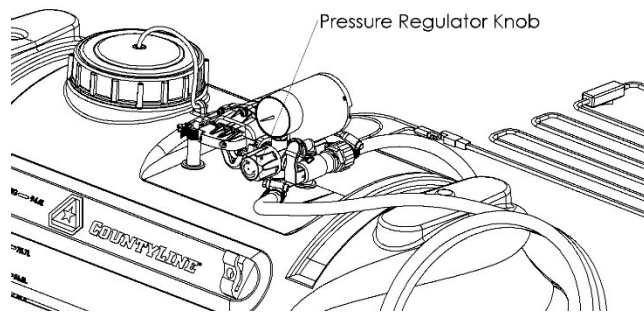
Take two 5/16"x2" Bolts (#2), insert the bolts into the boom frame holes, then place a 5/16" Washers (#2) onto the Bolts and secure with a Nut (#6).

Step 4. Assemble the two clamps (#7), one hose (E) and the sprayer. Connect the hose (E) to the pump and boom.



Step 5. Install the pressure gauge (C) to the manifold. **Do not overtighten.**

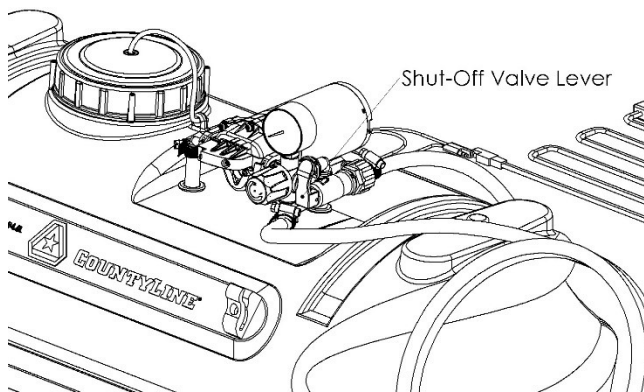
## Operation of the Spot Sprayer



When you are ready to spray, fill the tank halfway full with water. Connect the wire harness to vehicle battery and turn the switch to the "On" position. At this time take the spot sprayer gun squeeze the handle lever and begin spraying. The pump has a pressure switch which shuts the pump off when it reaches 60PSI.

Rotating the handgun's adjustable nozzle tip changes the tip pattern from a straight stream to a fine mist. Adjust the pressure with the pressure regulator. When the regulator knob is closed, pressure is at the highest point. Opening the knob will decrease the pressure.

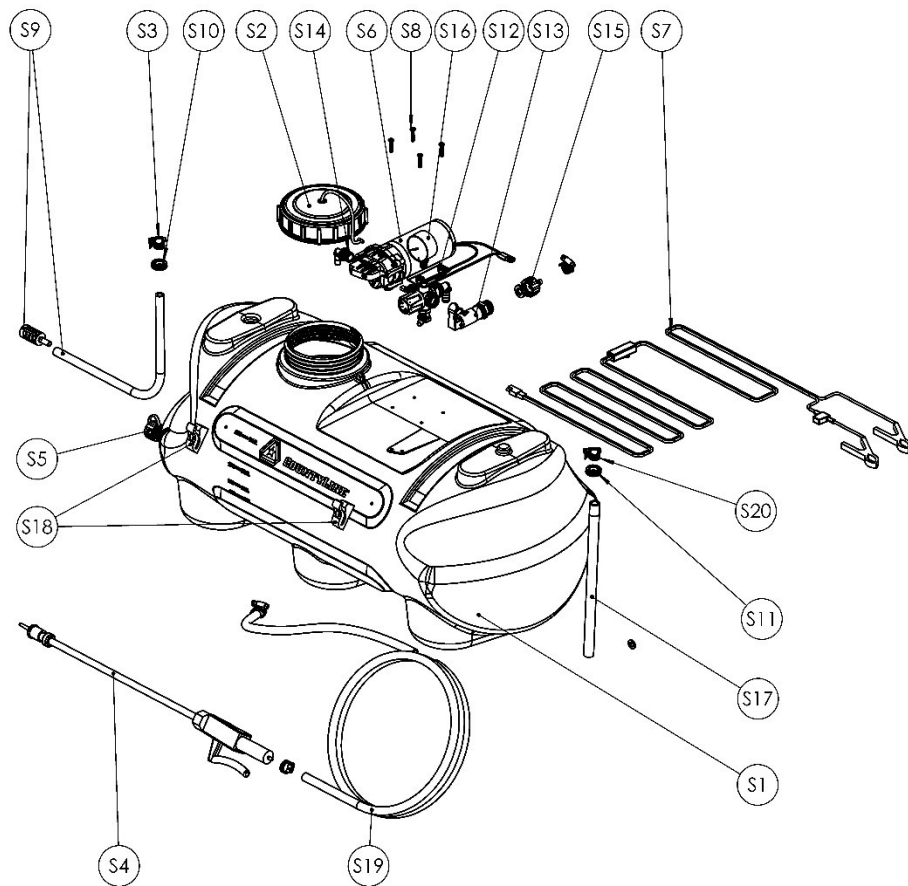
## Operation of the Boom



Before spraying with the boom, calculate the following: amount of chemicals, spray rate, pressure, and spray speed.

To switch from spot to boom spraying, rotate the shut-off valve lever down clockwise at 90 degrees.

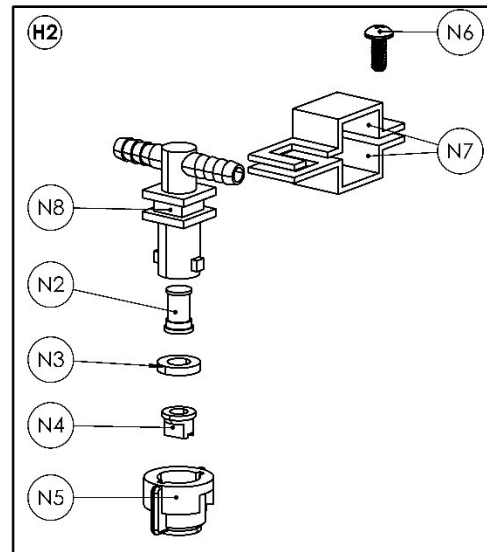
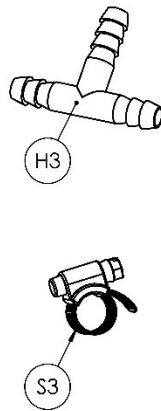
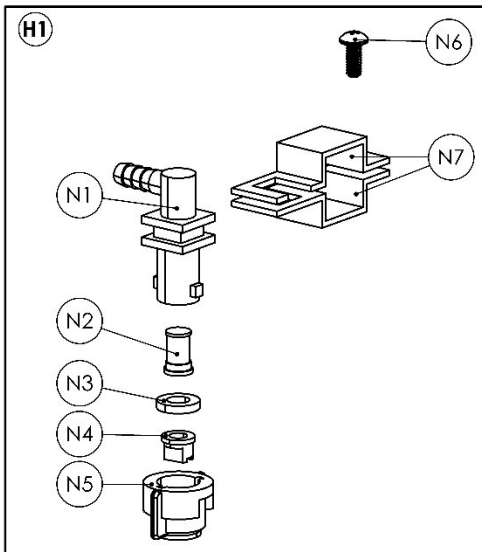
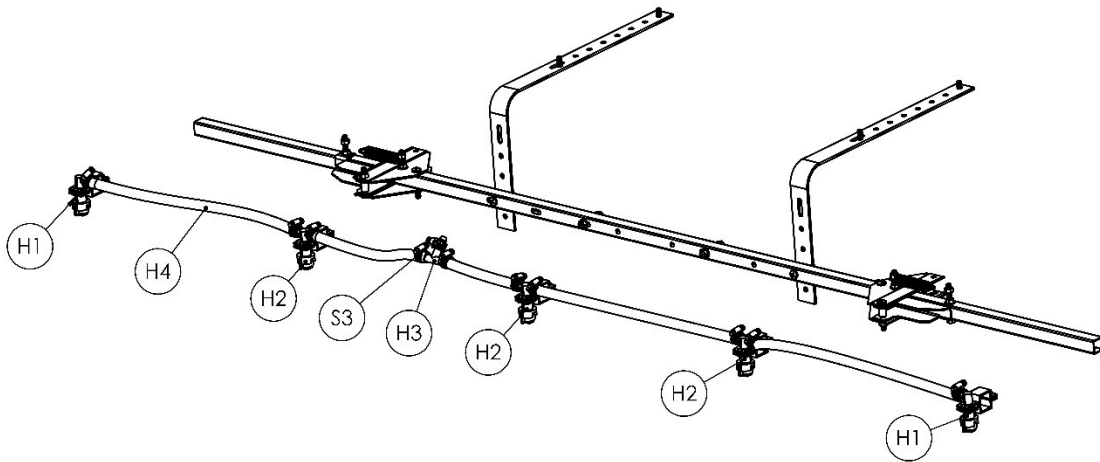
## Sprayer Parts List Breakdown



ITEM NO.	PART NUMBER	DESCRIPTION	QTY
S1	100037	MOLDED 25GAL STD TANK	1
S2	101157	LID WITH TEATHER	1
S3	100043	CLAMP1	3
S4	101147	GUN, DELUXE 18"	1
S5	100074	DRAIN CAP 3/4" FGHT	1
S6	7822FS-201-BBI	PUMP, 2.2GPM DEMAND	1
S7	100035	WIRE HARNESS 120"L, CLAMPS	1
S8	100072	SCREW, 10-24, 3/4", ZINC, PHILIPS	4
S9	100015	3/8" SUCTION FILTER W/ HOSE	1
S10	3639	GROMMET 3/8"	1

ITEM NO.	PART NUMBER	DESCRIPTION	QTY
S11	101181	GROMMET 1/2"	1
S12	101148	PRESSURE REGULATOR	1
S13	101149	SHUT-OFF VALVE	1
S14	5DFE38	3/8" ELBOW HOSE BARB TO 3/4"	1
S15	100007	3/4" FEMALE GTH NUT, HOSE BARB 3/8", SEAL	1
S16	100012	2" PRESSURE GAUGE 100 PSI 1/4 NPT	1
S17	101180	1/2" EPDM HOSE	1
S18	3784	CLIPS (2x)	1
S19	100056-D	3/8" EPDM HOSE, 15'	1
S20	3565	CLAMP 2	1

# Nozzle Harness Parts List



ITEM NO.	PART #	DESCRIPTION	QTY
N1	100026	NOZZLE BODY, L SQUARE, 3/8"	2
N2	3619	SUCTION STRAINER	5
N3	100027	GASKET	5
N4	101183	NOZZLE, 80 DEG	5
N5	101184	CAP, NOZZLE BODY	5
N6&N7	100028	1" SQUARE CLAMPS W/ 1/4"-20X5/8" BOLT	5
N8	101182	NOZZLE BODY, T SQUARE, 3/8"	3
H3	101153	TEE 3/8"	1
S3	100043	CLAMP1	10
H4	100056-H	3/8" EPDM HOSE	4

## Safe Operation

Always be aware of chemicals being used in sprayer for pump and sprayer compatibility. Refer to chemical Safety Data Sheets for safety information. Always wear proper PPE such as goggles, gloves and foot protection. Never spray flammable, caustic, acidic or other petroleum-based products. Do not leave tank in hot sun for extended periods. Heat can cause pressure build up resulting in unexpected release. Drain tank of any solutions after use and flush out entire system including tank, manifold and pump.

## After Spraying

Drain all remaining chemical mixture from tank. Fill tank part way full with clean, clear water and allow the water to flow through the sprayer for approximately 60 seconds.

Refill the tank and use a chemical neutralizer and repeat. Refer to the chemical manufacturer's safe disposal instructions of excess chemicals.

Warning: Some chemicals will damage the pump valves and diaphragm if allowed to soak untreated for extended periods. Always flush pump after use.

## Pump Winterizing and Storage

1. Run fresh water through pump for 90 seconds to flush any residual chemicals from pump head.
2. Pump RV antifreeze through pump for 30 seconds.
3. Always store pumps indoors in a clean and dry environment. Preferably in a cabinet or closed storage area that is free of insects and airborne debris.
4. Store pump in climate-controlled environment above freezing temperature.
5. If in storage for longer than 3 months, turn pump on intermittently for 30 seconds. Periodically turning on pump prevents the grease in bearings from settling on one side and wear.

## Pump Information

Pump Type: Demand  
Flow: 2.2 GPM  
Pressure: 60 PSI  
Valves: Viton

Diaphragm: Santoprene  
Ports: 3/4" Quick Attach  
Power: 12 V – Wire Leads with 2-Pin  
Self-Priming

## Pump Troubleshooting

### **My pump will not start:**

- Check all electrical connections, fuses, breakers, and wires powering the pump. If you are unsure about how to check components, contact a qualified technician.
- Check wire leads, and connection located on the pressure switch.
- Test Pressure Switch
- Rectifier or Motor for open or ground circuit.

### **Pump will not prime:**

- Most common reason for pump not priming is an air leak in your system. From the suction side of your pump ensure that all O-rings are in place and all clamps are airtight. Ensure there are no holes in your hoses.
- Examine intake filter. If it becomes blocked with debris, clean it out or replace it.
- Remove hoses and check for clogs or obstructions by running water through.
- Increase suction hose size to slightly larger than the outlet or discharge side of pump.
- Check pump housing for cracks.

**Pump leaks from pump head or switch:**

- Check for loose screws or bolts around pressure switch and pump head.
- Check for punctured or torn diaphragm.

**Warnings**

- Do not use pump outside the parameters listed on the label.
  - NEVER pump gasoline or other flammable liquids. Pump head materials are designed for use with water-based products only. NEVER use with Petroleum based products.
  - Do not use in an explosive environment. Arcing from the motor brushes, switch, or excessive heat from an improperly cycled motor may cause an explosion.
  - Do not assume fluid compatibility. If the fluid is improperly matched to the pump head, internal damage may occur.
  - Pump to be run between 32°F (0°C) and 115°F(46°C) environmental conditions. Maximum fluid temperature run through pump is 140°F(60°C).
  - To prevent electrical shock, disconnect power before initiating any work. In case of a pump failure, the motor housing and/or pump fluid may carry high voltage to components normally considered safe. If uncertain, consult an electrician. Electrical wiring should only be done by a qualified electrician per Local and State Electrical Codes.
  - Do not locate the pump motor near low temperature plastics or combustible material.
  - The installation of a 50-mesh strainer is necessary to prevent debris or foreign material from entering the pump and causing pump failure.
  - The sprayer pump is designed for intermittent duty, but may run continuously if the motor temperature does not exceed the recommended limit.
  - Do not use pump if damaged and not in working condition. Always inspect pump before use.
  - Always assess work area for any hazard before using pump.
- Always understand the hazard of any chemicals used in your pump. Proper personal protective equipment should be worn, and Safety Data Sheet read.

**Spray Tip Rate Chart**

Spray Height: 20”; Nozzle Spacing: 20”								
		Gallons Per Acre						
Pressure (psi)	Capacity (GPM)	3.0 MPH	3.5MPH	4.0MPH	5.0MPH	6.0MPH	7.0MPH	8.0MPH
30	0.17	16.8	14.4	12.6	10.1	8.4	7.2	6.3
35	0.19	18.8	16.1	14.1	11.3	9.4	8.1	7.1
45	0.21	20.8	17.8	15.6	12.5	10.4	8.9	7.8
60	0.24	23.8	20.4	17.8	14.3	11.9	10.2	8.9

**Limited Warranty**

This sprayer unit is guaranteed for one year to the original retail purchaser, from date of purchase, for all components excluding the metal boom if included with the unit, to be free from defects in quality or workmanship. The pump is guaranteed for two years to the original retail purchaser, from date of purchase to be free from defects in quality or workmanship. Call 1-888-376-9601 for parts. This warranty covers home owner usage only, Commercial usage changes this warranty to 90 days for the sprayer and pump. This warranty does not cover damage caused by misuse, abuse, or alteration. Tractor Supply Co. will not be held liable for any losses due to neglectful operation, improper prep for storage or use of petroleum-based products such as gas, diesel, kerosine, etc. in the sprayer. This warranty is not transferable to subsequent owners.