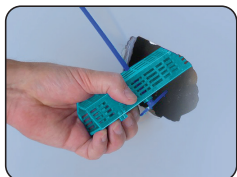
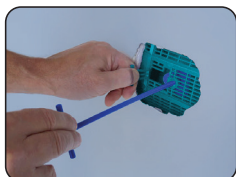


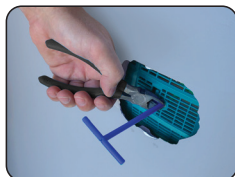
STEP A: PREPARE WALL PLATE (FOLLOW INSTRUCTIONS ON WALL PLATE PACKAGING)



INSERT WALL PLATE



TIGHTEN AND SECURE



**CLIP & REMOVE EXCESS
TENSION BAR**

STEP B: PREPARE PATCH COMPOUND STEP 1 (FOLLOW INSTRUCTIONS ON PATCH COMPOUND BAG STEP 1)

WARNING: DO NOT DISPOSE OF COMPOUND DOWN ANY DRAIN



1 Cut top of bag



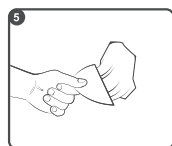
2 Add 1 cup of water



3 Mix in bag for 1 minute



4 Cut corner and squeeze
material to fill hole



5 Use trowel to push
compound into wall plate
and then remove all excess
material

IMPORTANT

Let material dry before moving on to STEP 2 Final Patch.
Allow 10 minutes to dry after compound has set/cured.

STEP C: PREPARE PATCH COMPOUND STEP 2 (FOLLOW INSTRUCTIONS ON PATCH COMPOUND BAG STEP 2)

WARNING: DO NOT DISPOSE OF COMPOUND DOWN ANY DRAIN



1 Cut top of bag



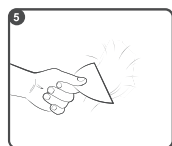
2 Add 1/4 cup of water



3 Mix in bag for 1 minute



4 Cut corner and squeeze
material over first coat



5 Use trowel to smooth and
float compound over the
edges of patched hole

IMPORTANT

Let material dry before sanding. Allow 24 hours to dry before painting.
Sand smooth before applying texture or paint.



SAND SMOOTH

**SCAN
HERE** 



**WATCH THE QUICK
START VIDEO FOR
STEP BY STEP
INSTRUCTIONS**