

BLUEGRASS *Living*

VLRK-00 REMOTE ON/OFF SAFETY PILOT VALVE KIT WITH PROPANE CONVERSION



⚠ WARNING: If the information in this manual is not followed exactly, a fire or explosion may result causing property damage, personal injury or loss of life.

- Do not store or use gasoline or other flammable vapors and liquids in the vicinity of this or any other appliance.
- **WHAT TO DO IF YOU SMELL GAS**
 - Do not try to light any appliance.
 - Do not touch any electrical switch; do not use any phone in your building.
 - Immediately call your gas supplier from a neighbor's phone. Follow the gas supplier's instructions.
 - If you cannot reach your gas supplier, call the fire department.
- Installation and service must be performed by a qualified installer, service agency or the gas supplier.

INSTALLER: Leave this manual with the appliance.
CONSUMER: Retain this manual for future reference.



Questions, problems, missing parts? Before returning to your retailer, call our customer service department at 1-866-762-4050, 8:00 am - 4:30 pm CST, Monday through Friday or email contact@bluegrassliving.com

TABLE OF CONTENTS

Specifications	3	Care and Maintenance	14
Safety	3	Accessories	14
Product Features	5	Troubleshooting	15
Local Codes	5	Replacement Parts	16
Air For Combustion and Ventilation	6	Parts	16
Installation	6	Warranty	18
Operation	12		
Inspecting Burners	14		

SAVE THIS BOOK

This is a gas-fired appliance. It uses air (oxygen) from the room in which it is installed. Provisions for adequate combustion and ventilation air must be provided. Refer to *Air For Combustion and Ventilation* section on page 6 of this manual.

⚠ WARNING: Improper installation, adjustment, alteration, service or maintenance can cause injury or property damage. Refer to this manual for correct installation and operational procedures. For assistance or additional information consult a qualified installer, service agency or the gas supplier.

This appliance may be installed in an aftermarket,* permanently located, manufactured (mobile) home, where not prohibited by local codes.

* Aftermarket: Completion of sale, not for purpose of resale, from the manufacturer.

SPECIFICATIONS

Note: This vented appliance must be installed only in a solid-fuel burning fireplace with a working flue and constructed of noncombustible material.

The charts indicate technical information regarding the installation of your gas log set.

Please make sure that all of the specifications shown are applicable before installation is attempted.

The fireplace must include a working flue and venting system with the minimum openings shown as below.

Model	18" Sets	24" Sets	30" Sets
Gas Type	Natural	Natural	Natural
BTU Input*	45,000 BTU/Hr	55,000 BTU/Hr	65,000 BTU/Hr
Minimum Vent Opening	8" Diameter	8" Diameter	8" Diameter
Burner Orifice (Propane)**	2.05 (mm)	2.25 (mm)	2.42 (mm)

* Btu/Hr Rating is the same when unit is converted to Propane gas.

** Number is printed on orifice. Located in kit when converting to Propane Gas.

FUEL INLET PRESSURE SPECIFICATIONS (W.C.)		
Natural Gas	Minimum 5.5" W.C.	Maximum 10.5" W.C.
Propane Gas*	Minimum 11" W.C.	Maximum 13" W.C.

* For use if unit is converted to Propane gas.

MINIMUM FIREBOX SIZES				
Model	Front Width	Back Width	Depth	Height
18" Sets	29"	23"	15"	18"
24" Sets	33"	25"	15"	18"
30" Sets	39"	37"	16"	19"

SAFETY

IMPORTANT: Read this owner's manual carefully and completely before trying to assemble, operate, or service this heater. Improper use of this heater can cause serious injury or death from burns, fire, explosion, electrical shock and carbon monoxide poisoning.

Only a qualified installer, service agent, or local gas supplier may install and service this product.

⚠ WARNING: Keep flue open when operating unit.

Carbon Monoxide Poisoning: Early signs of carbon monoxide poisoning resemble the flu, with headaches, dizziness or nausea. If you have these signs, the heater may not be working properly. Get fresh air at once! Have heater serviced. Some people are more affected by carbon monoxide than others. These include pregnant women, people with heart or lung disease or anemia, those under the influence of alcohol and those at high altitudes.

Natural Gas: Natural gas is odorless. An odor-making agent is added to the gas. The odor helps you detect a gas leak. However, the odor added to the gas can fade. Gas may be present even though no odor exists.

SAFETY

⚠ WARNING: Any change to this log set or its controls can be dangerous.

⚠ WARNING: This appliance is for installation only in a solid-fuel burning masonry or factory-built fireplace, constructed of noncombustible material, and connected to a working flue.

⚠ WARNING: Keep the appliance area clear and free from combustible materials, gasoline, and other flammable vapors and liquids.

1. This appliance, as supplied, is only for use with the type of gas indicated on the rating plate. This appliance is convertible for use with propane, using the manual ON/OFF safety pilot valve kit.
2. If you smell gas:
 - Shut off gas supply
 - Do not try to light any appliance
 - Do not touch any electrical switches; do not use any phone in your building
 - Immediately call your gas supplier from a neighbor's phone. Follow the gas supplier's instructions
 - If you cannot reach your gas supplier, call the fire department
3. Never install the log set:
 - In a recreational vehicle
 - Where curtains, furniture, clothing, or other flammable objects are less than 42" from the front, top, or sides of the log set
 - In high traffic areas
 - In windy or drafty areas
4. Before installing in a solid fuel burning fireplace, the chimney flue and fire-box must be cleaned of soot, creosote, ashes and loose paint by a qualified chimney cleaner. Creosote will ignite if highly heated. Inspect chimney flue for damage.
5. You must operate this log set with a fireplace screen in place. Make sure fireplace screen is closed before running log set. If the fireplace has glass doors, they must remain OPEN while this log set is in operation.
6. Do not allow fans to blow directly into the fireplace. Avoid any drafts that alter burner flame patterns. Ceiling fans can create drafts that alter burner flame patterns. Altered burner patterns can increase sooting.
7. Do not use a blower insert, heat exchanger insert, or other accessory not approved for use with this log set.
8. This log set needs fresh, outside air ventilation to run properly. See the [*Air for Combustion and Ventilation*](#), page 6.
9. Do not run log set
 - where gasoline, flammable liquids and vapors are used or stored
 - under dusty conditions
10. Do not burn solid fuel in the fireplace after installing the log set. Do not use this log set to cook food or burn paper or other objects.
11. Log set becomes very hot when in use. Keep children and adults away from hot surface to avoid burns or clothing ignition. Log set will remain hot for a short time after shut-down. Allow surface to cool before touching.
12. Carefully supervise young children when they are in the room with log set.
13. Do not use appliance if any part has been exposed to or under water. Immediately call a qualified service technician to inspect the room appliance and to replace any part of the control system (if using control system) and any gas control which has been under water.
14. Turn log set off and let cool before servicing, installing, or repairing. Only a qualified service person should install, service, or repair log set.

PRODUCT FEATURES

VLRK-OO REMOTE ON/OFF SAFETY PILOT VALVE KIT WITH PROPANE CONVERSION

This VLRK-OO Vented Remote Valve Kit contains a control valve certified by C.S.A., which provides a safe and convenient way to ignite and operate your Vented Gas Log Set. This system requires no matches, batteries, or other sources to light. Follow the instructions provided with the kit to complete the conversion and qualified connection to a propane gas supply, See Check Gas Type under LOCAL CODES, below.

LOCAL CODES

Install and use heater with care. Follow all local codes. In the absence of local codes, use the latest edition of *The National Fuel Gas Code, ANSI Z223.1/NFPA 54**.

*Available from:

American National Standards Institute, Inc.
1430 Broadway
New York, NY 10018

National Fire Protection Association, Inc.
1 Batterymarch Park
Quincy, MA 02269-9101

State of Massachusetts: The installation must be made by a licensed plumber or gas fitter in the Commonwealth of Massachusetts.

Sellers of unvented propane or natural gas-fired supplemental room heaters shall provide to each purchaser a copy of 527 CMR 30 upon sale of the unit.

In the State of Massachusetts the gas cock must be a T-handle type. The State of Massachusetts requires that a flexible appliance connector cannot exceed three feet in length.

IMPORTANT: Install equipment shutoff valve in an accessible location. The equipment shutoff valve is for turning on or shutting off the gas to the appliance.

A SAFETY PILOT KIT IS REQUIRED FOR PROPANE APPLICATIONS

CHECK GAS TYPE

This Safety Pilot Valve Kit **does not include** the Natural Gas burner inlet fitting (with Orifice). These parts are supplied with the burner system. (See Figure 1).

National Fuel Gas Code Requirements mandate the use of a Safety Pilot Valve on all Propane installations. These instructions must be followed on all installations of this type

If connecting to and operating on Propane Gas, the Natural Gas Burner Inlet Fitting (With Orifice) must be replaced with the Air Mixer and appropriate propane orifice supplied in this kit. (see Figure 2)

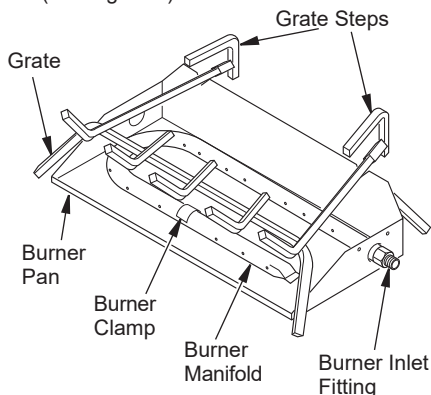


Figure 1 - Burner Pan Assembly

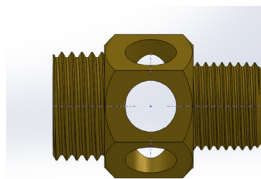


Figure 2 - Propane Air Mixer

AIR FOR COMBUSTION AND VENTILATION

⚠ WARNING: If the area in which the heater may be operated does not meet the required volume for indoor combustion air, combustion and ventilation air shall be provided by one of the methods described in the *National Fuel Gas Code, ANSI Z223.1/NFPA 54, the International Fuel Gas Code, or applicable local codes.*

Today's homes are built more energy efficient than ever. New materials, increased insulation, and new construction methods help reduce heat loss in homes.

Home owners weather strip and caulk around windows and doors to keep the cold air out and the warm air in. During heating months, home owners want their homes as airtight as possible.

While it is good to make your home energy efficient, your home needs to breathe. Fresh air must enter your home. All fuel-burning appliances need fresh air for proper combustion and ventilation.

Exhaust fans, fireplaces, clothes dryers, and fuel burning appliances draw air from the house to operate. You must provide adequate fresh air for these appliances. This will ensure proper venting of vented fuel-burning appliances.

INSTALLATION

⚠ WARNING: Before installing in a solid fuel burning fireplace, the chimney flue and firebox must be cleaned of soot, creosote, ashes, and loose paint by a qualified chimney cleaner. Creosote will ignite if highly heated. A dirty chimney flue may create and distribute soot within the house. Inspect chimney flue for damage.

NOTICE: Installation, service, and repair of this appliance must be performed by a qualified installer, service agency, company or gas supplier experienced with this type of gas appliance. Only factory authorized components listed in these instructions may be used in accordance with the manufacturer's instructions and all codes and requirements of the authority having jurisdiction. Any modifications to this kit, or use of unauthorized components, or accessory items, will void the manufacturer's warranty, and may result in a hazardous condition.

⚠ CAUTION: Do not remove the metal data plates attached to the burner pan. The data plates contain important warranty information.

⚠ WARNING: A qualified service person must connect log set to gas supply. Follow all local codes.

Installation Items Needed

Before installing log set, make sure you have the items listed below.

- piping (check local codes)
- sealant (resistant to natural gas)
- equipment shutoff valve
- test gauge connection
- adjustable (crescent) wrench or pliers
- sediment trap
- tee joint
- pipe wrench

⚠ CAUTION: Only use a new, black iron or steel pipe. Internally-tinned copper tubing may be used in certain areas. Check your local codes. Use pipe of 1/2" diameter or greater to allow proper gas volume to log set. If pipe is too small, loss of pressure will occur.

Installation must include an equipment shutoff valve, union, and plugged 1/8" NPT tap. Locate NPT tap within reach for test gauge hook up. NPT tap must be upstream from log set (see *Figure 3*).

INSTALLATION

Approved Flexible Gas Hose
(if allowed by local codes)

* Purchase the optional CSA design-certified equipment shutoff valve from dealer. See [Accessories](#) page 14.

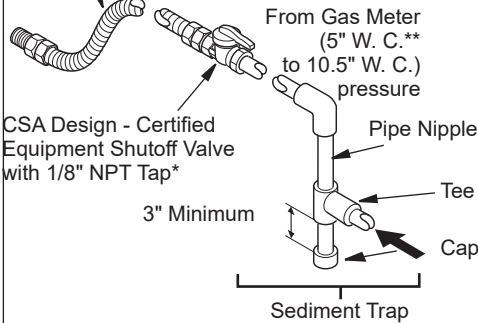


Figure 3 - Gas Connection

BURNER PAN INSTALLATION

These items provided with Burner System and are not included in VLRK-OO kit.

Remove logs, hearth kit, pan materials, and hardware from carton.

Remove all protective packaging applied to logs and base for shipment.

Check all items for any shipping damage.

Note: The following instructions apply to dual flame "U" style burners.

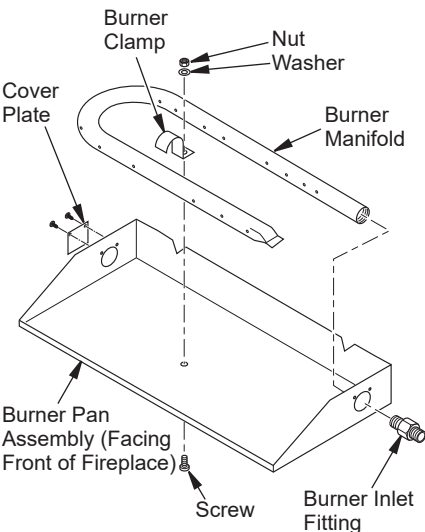


Figure 4 - Installing Burner Pan

Be sure all pipe threaded connections are tight, and have thread compound to prevent leaks.

1. Determine which side the gas line will be coming into the fireplace.

Gas line is on the right side. This unit is manufactured with the gas inlet on the right side of the burner pan.

(See *Figure 4*) Proceed to step 8.

Gas line is on the left side. If your gas line will be coming into the fireplace from the left side, continue with step 2.

2. Using a screwdriver, remove cover plate on left side of burner pan (See *Figure 4*).
3. Unscrew burner inlet fitting from burner manifold (See *Figure 4*).
4. Place burner manifold in pan with threaded opening facing opening on left side.
5. Using thread sealant (resistant to the action of natural gas) on larger end of fitting, screw the burner inlet fitting through hole and into burner manifold. Tighten using a wrench.
6. Using burner clamp, screw, and nut provided, assemble clamp to pan. This will hold the burner manifold in place.
7. Using screws removed in step 2, install cover plate over opening on right side of burner pan.
8. Install Adapter Fitting onto the burner inlet fitting using thread sealant on male threads of burner inlet fitting (See *Figure 4*).

INSTALLATION

9. Place the cut-out of the Heat Shield (see figure) over the elbow and place it down against the body of the Control Valve. Line up the mounting holes with the threaded holes in the control valve body. Install Php. Head Machine Screws.
10. Using pipe sealant, thread the Control Valve/Heat Shield assembly onto the Adaptor Fitting already assembled to the Burner Orifice Fitting. The valve assembly can be rotated to horizontal, to allow it to rest flat on the fireplace floor. Simply rotate the entire valve assembly by turning it clockwise on the fitting. Hold the fitting with a 15/16" wrench if needed.
- 11 Attach Pilot Burner Assembly to the Pilot Bracket using two #8 Php. screws. Carefully handle the Pilot Tubing when attaching the Pilot Burner Assembly to the Burner Pan. Care should be taken not to kink the tubing which would restrict gas flow to the pilot burner.
12. Attach Pilot Bracket to the Burner Pan, using the 2 #8 Php.sheet metal screws. Install the screws from inside the Burner Pan through the wall of the pan and into the Pilot Bracket.



Figure 7 - Assembled Valve Kit

CONNECTING THE RECEIVER TO THE VALVE KIT

1. Do not install the (4) "AA" batteries into the receiver until the solenoid is connected to the receiver.

Thermo-SAFETY feature , When the ambient temperature inside the receiver case reaches 130°F, the RECEIVER will automatically send power to the solenoid to shut the gas flow off to the burners. When the ambient temperature drops below 120°F the operator can reactivate the burner by pushing ON/OFF button on the TRANSMITTER. . When the ON/OFF button is pressed, the burners will go out.

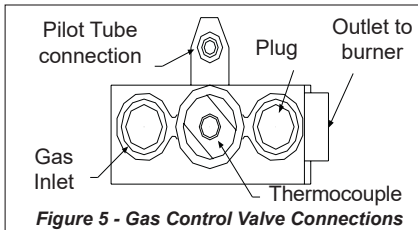


Figure 5 - Gas Control Valve Connections

13. Carefully form the Pilot Tubing to the correct connection on the Control Valve (See Figure) Use sealant on the threads of the male fitting. Tighten as needed to prevent leaks.
14. Carefully form the Thermocouple wire to the correct location on the Gas Control. Tighten "finger-tight" then, using a 5/16" wrench, tighten 1/4 turn more.

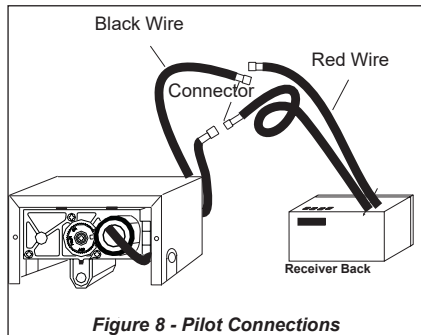


Figure 8 - Pilot Connections

1. Attach the connector on the black wire from the valve to the black wire on the receiver.

2. Attach the connector on the red wire from the valve to the red wire on the receiver.

3. Install the 4 "AA" Batteries into the receiver (See Figure 9) ALKALINE Batteries are recommended for use in this product. Be sure to install the Batteries with (+) and (-) facing correctly.

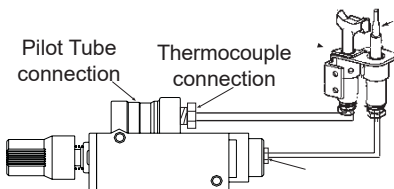


Figure 6 - Pilot Connections

REMOTE RECEIVER/TRANSMITTER

IMPORTANT! THE REMOTE RECEIVER MUST BE POSITIONED WHERE AMBIANT TEMPERATURES DO NOT EXCEED 130 DEG. F.

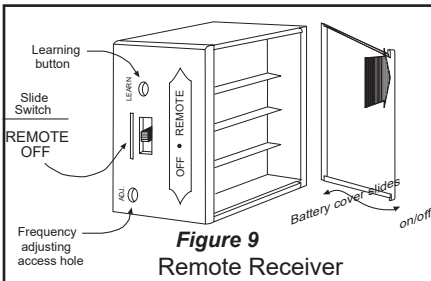


Figure 9
Remote Receiver

The remote receiver has a 3-position slide switch for selecting the mode of operation: **OFF/REMOTE/ON**.

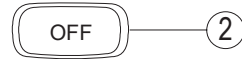
REMOTE: The receiver must be in this position the transmitter is used for Programming (Initial Use) or Operating the appliance

OFF: Disables the Receiver (For safety and to preserve battery life, it is suggested that the Receiver be placed in the OFF position when left unattended for extended lengths of time.

ON: Allows the appliance burners to operate without using the Remote Transmitter.

The LED signal light should illuminate when either the **ON** or **OFF** button is pressed. If the signal light does not illuminate, check the position of the battery, and verify the battery is fully charged.

KEY SETTINGS



- 1 - ON** This turns the appliance on
- 2 - OFF** This turns the appliance off

Figure 11 - Key Functions

This transmitter has one of 256 unique security codes. It may be necessary to program the remote receiver to learn the security code of the Transmitter upon initial use, after batteries are replaced, or if using a replacement transmitter

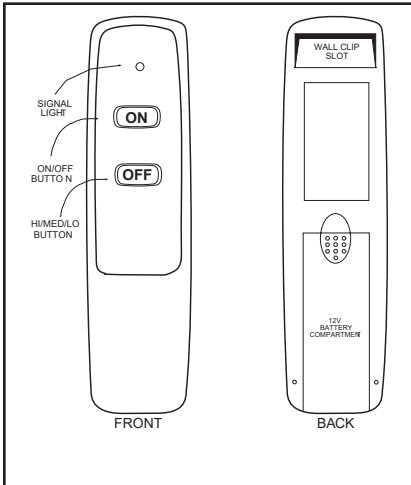


Figure 10 Remote Transmitter

The transmitter operates on a 12V (A23) battery that is included. Install the 12V battery into the battery compartment. It is recommended that ALKALINE Batteries be used.

Make sure the receiver slide switch is in the **REMOTE** position. Press and release the **LEARN** button on the receiver.

When "BEEP" is heard, press and hold (about 2 seconds) the ON/OFF button on the Transmitter. A series of "BEEPS" will then be heard indicating the Transmitter code has been accepted.

If no "Beeps" are heard when the LEARN button is pressed, the Receiver can no longer retain any other codes - All older codes may be deleted from the Receiver by pressing and holding the LEARN button on the Receiver for 10 or more seconds. A series of "Beeps" indicate that the codes have been cleared.

Verify battery condition and position before programming.

INSTALLING LOGS

⚠ WARNING: Failure to position the parts in accordance with these diagrams or failure to use only parts specifically approved with this appliance may result in property damage or personal injury.

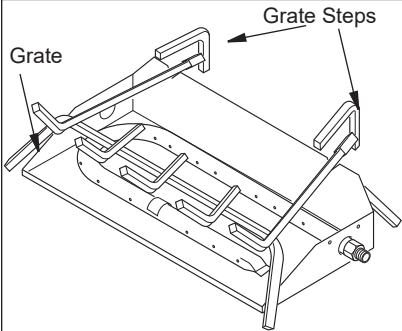


Figure 12 - Grate Steps

Connect the Gas Supply to the Gas Inlet of the control at the location of the Gas Inlet (See Figure 5 page 8) using a installer supplied fitting best for the installation.

Install the logs according to the instruction provided with your logs. It is very important to install the logs exactly as instructed. Do not modify logs. Use only logs supplied with heater.

Each log is marked with a number. This number will help you to identify the logs when installing.

After installing logs, add decorative cinders around the grate base, do not place any

CHECKING GAS CONNECTIONS

⚠ WARNING: Never use an open flame to check for a leak. Apply a noncorrosive leak detection fluid to all joints. Bubbles forming show a leak. Correct all leaks immediately.

⚠ WARNING: Test all gas piping and connections for leaks after installing or servicing. Correct all leaks immediately.

PRESSURE TESTING GAS SUPPLY PIPING SYSTEM

Test Pressures In Excess Of 1/2 PSIG (3.5kPa)

1. Disconnect heater with its appliance main gas valve (control valve) and equipment shutoff valve from gas supply piping system. Pressures in excess of 1/2 PSIG will damage gas control valve.
2. Cap off open end of gas pipe where equipment shutoff valve was connected.
3. Pressurize supply piping system by either using compressed air or opening gas supply tank valve.
4. Check all joints of gas supply piping system. Apply a noncorrosive leak detection fluid to gas joints. Bubbles forming show a leak.
5. Correct all leaks immediately.
6. Reconnect log set and equipment shutoff valve to gas supply. Check reconnected fittings for leaks.

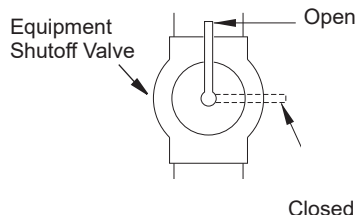


Figure 13 - Equipment Shutoff Valve

CHECKING GAS CONNECTIONS

Test Pressures Equal To or Less Than 1/2 PSIG (3.5 kPa)

1. Close equipment shutoff valve (see Figure 13).
2. Pressure supply piping system by either using compressed air or opening gas supply tank valve.
3. Check all joints from gas meter to equipment shutoff valve (See Figure 14). Apply a noncorrosive leak detection fluid to gas joints. If bubbles form, there may be a leak.
4. Correct all leaks immediately.

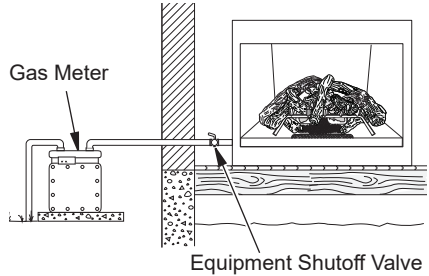


Figure 14 - Checking Gas Joints

TESTING BURNER FOR LEAKS

⚠ WARNING: Never check for gas leaks with open flame.

1. Generously apply a noncorrosive leak detection fluid to all connections.
2. Light the burner with the shutoff valve, no more than half open, and holding a match slightly in front of the pan (see [Lighting Instructions](#), page 12).
3. Inspect all connections for bubbles, raw gas odor, or flame from any area other than the burner (leaks). If leaks are detected, shut off the gas valve immediately. Tighten, or reassemble the loose connection(s) using pipe joint compound until burner system is leak free.
4. When the burner is tested and leak free, observe the individual tongues of flame on the burner.
Note: Let the burner manifold cool first before removing to unclog port blockages. The burner design includes more ports on the outside of the bar. Make sure that all ports are clear and producing flame evenly across the burner. If any ports appear blocked, clear them by removing the burner manifold and reaming the ports with a modified paper clip or other suitable tool.
5. When finished testing, turn the gas shutoff valve OFF to extinguish all flames.

⚠ WARNING: If you do not follow these instructions exactly, a fire or explosion may result causing property damage, personal injury or loss of life.

⚠ WARNING: It is recommended that you operate this appliance with the fireplace screen in place. Make sure screen is installed before running appliance.

1. STOP! Read the safety information above and top of page 10.
2. Make sure control knob is in the OFF position. If not, push knob in slightly and turn clockwise ↻ to the OFF position. NOTE: Manual control knob cannot be turned from PILOT to OFF unless knob is pushed slightly. Do not force.
3. Make sure equipment shutoff valve is fully open.
4. Wait 5 minutes to clear out any gas. Then smell for gas around appliance and near the floor. If you smell gas, STOP! Follow "B" in the safety information, page 13. If you do not smell gas, go to the next step.
5. Push in control knob slightly and turn counterclockwise ↻ to the PILOT position. Keep control knob pressed in for five seconds.

Note: The first time the appliance is operated after connecting the gas supply, the control knob should be pressed for about 30 to 60 seconds. This will allow air to bleed from the gas system. If pilot does not stay lit, refer to [Troubleshooting](#), pages 15 Also contact a qualified service technician or gas supplier for repairs. If the ignitor or electrode are not working properly and until repairs are made, light pilot with match.

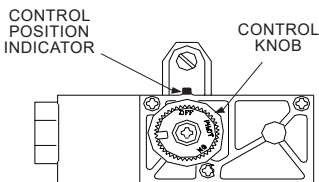


Figure 15 - Control Positions

- If control knob does not pop up when released, contact a qualified service technician or gas supplier for repairs.

6. With control knob pressed in, push down and hold ignitor button for a few seconds. This will light the pilot. The pilot is attached to the side of the burner. If needed keep pressing ignitor button until pilot lights. *Note: If pilot does not stay lit, refer to [Troubleshooting](#), pages 15. Also contact a qualified service technician or gas supplier for repairs. To light pilot with match, see [Manual Lighting Procedure](#), page 13.*

7. Keep control knob pressed in for 30 seconds after lighting pilot. After 30 seconds, release control knob. If control knob does not pop up when released, contact a qualified service person or gas supplier for repairs.

Note: "If pilot goes out, repeat steps 3 through 7. This appliance has a safety interlock system. Wait one (1) minute before lighting pilot again.

8. To light the burner, partially press down the control knob slightly and rotate counterclockwise ↻. Release the downward pressure on the knob while continuing to turn until the knob locks in the ON position. The main burner should ignite. Do not operate between locked positions.
9. Make sure fireplace screen is in place before operating appliance.
10. If appliance will not operate, follow the instructions [To Turn Off Gas To Appliance](#), [page 13](#), and call your service technical or gas supplier.

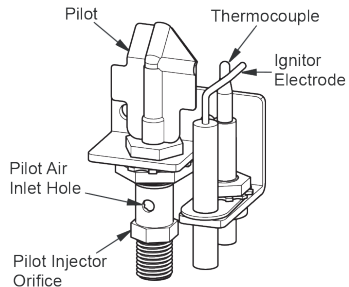




Figure 16 - Pilot

TO TURN OFF GAS TO APPLIANCE

Shutting Off Appliance

1. Push in control knob slightly and turn clockwise  to the OFF position. Do not force.
2. Close equipment shutoff valve.

Shutting Off Burner Only (pilot stays lit)

Push in and turn knob clockwise  to the PILOT position.

MANUAL LIGHTING INSTRUCTIONS

1. Open Fireplace Screen (If applicable).
2. Follow steps 1 through 7 under Lighting Instructions, page 12.
3. With control knob in the PILOT position, strike a match, and hold near pilot. Press in control knob; pilot should light.
4. Keep control knob pressed in for 30 seconds after lighting pilot. After 30 seconds, release control knob.
5. Make sure the fireplace screen is in place before operating fireplace.

IMPORTANT: Owner's should check pilot flame pattern and burner flame pattern often. Incorrect flame patterns indicate the need for cleaning.

INSPECTING BURNERS

PILOT FLAME PATTERN

Figure 17 shows a correct and incorrect pilot flame patterns. The incorrect pilot flame is not touching the thermocouple. This will cause the thermocouple to cool, which shuts the burner off. There should not be excessive flames present under pilot shield. If unit has been converted to propane gas and the pilot injector orifice has not been replaced, there will be excessive pilot flames. Install propane injector orifice if this is the case.

- If pilot flame pattern is incorrect, as shown
- turn fireplace off (see [To Turn Off Gas to Appliance](#), page 13)
 - see [Troubleshooting](#) pages 15.

Notice: Do not mistake orange flames with yellow tipping. Dirt or other fine particles enter the fireplace and burn causing brief patches of orange flame.

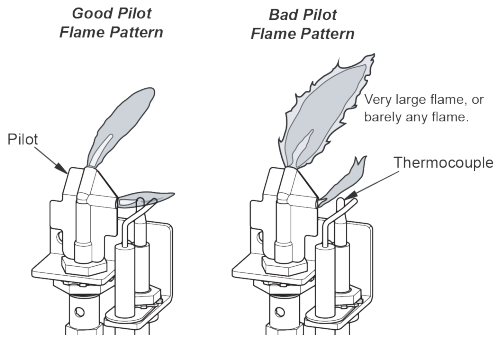


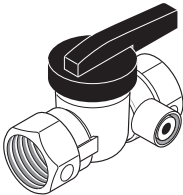
Figure 17 - Pilot Flame Pattern

CARE AND MAINTENANCE

- Keep the area around the log set clean and clear of debris.
- Occasionally, you may use a soft bristle brush to clean logs.
- Once every year a qualified agency or certified chimney sweep should examine and clean the venting system of the fireplace.

ACCESSORIES

Please visit us online at www.bluegrassliving.com to learn more about all of the available accessories.



EQUIPMENT SHUTOFF VALVE

For all models. Equipment shutoff valve with 1/8" NPT tap. Fits 1/2" NPT pipe.

TROUBLESHOOTING

⚠ WARNING: If you smell gas:

- Shut off gas supply.
- Do not try to light any appliance.
- Do not touch any electrical switch; do not use any phone in your building.
- Immediately call your gas supplier from a neighbor's phone. Follow the gas supplier's instructions.
- If you cannot reach your gas supplier, call the fire department.

⚠ WARNING: Only a qualified service technician should service and repair heater. Make sure that power is turned off before proceeding. Turn off and let cool before servicing.

⚠ CAUTION: Never use a wire, needle, or similar object to clean pilot. This can damage pilot unit.

IMPORTANT: Operating heater where impurities in air exist may create odors. Cleaning supplies, paint, paint remover, cigarette smoke, cements and glues, new carpet or textiles, etc., create fumes. These fumes may mix with combustion air and create odors.

Note: All troubleshooting items are listed in order of operation.

TROUBLESHOOTING

PROBLEM	CAUSE	CORRECTIVE ACTION
1. Pilot noise	Excess pressure	<ul style="list-style-type: none"> • Check line pressure and adjust to 7 inch water column.
2. Pilot will not light	Inadequate gas flow	<ul style="list-style-type: none"> • Check all valves • Clear obstructions • Check for line kinks
3. Pilot & Burner go out after burning for several minutes (up to one hour)	<p>Overheating of Thermocouple</p> <p>Thermocouple too tight, or has bad connection</p>	<ul style="list-style-type: none"> • Check to see that Main Burner Flames are not hitting the Thermocouple (move Pilot Assembly so only the tips of the Thermocouple and pilot are hanging over the burner pan). • Reposition logs, if that is the cause, move Main Burner flames away from the Thermocouple. • Loosen Thermocouple slightly
4. Pilot is operating but burner will not light	<p>Gas Control Knob is not set to "ON"</p> <p>Low battery power in transmitter or receiver</p> <p>Wire connections damaged or unplugged</p>	<ul style="list-style-type: none"> • Confirm that the gas control knob is in the "ON" position. • Check batteries, replace if needed • Check the connections on the RED and BLACK wires from the remote receiver.

REPLACEMENT PARTS

Note: Use only original replacement parts. This will protect your warranty coverage for parts replaced under warranty.

PARTS UNDER WARRANTY

Contact authorized dealers of this product. If they can't supply original replacement parts, call Customer Service toll free at 1-866-762-4050 for referral information.

When calling Customer Service or your dealer, have ready:

- Your name
- Your address

- Model and serial number of your heater
- How heater was malfunctioning
- Type of gas supply and Propane tank size
- Purchase date

Usually, we will ask you to return the defective part to the factory

PARTS NOT UNDER WARRANTY

Contact authorized dealers of this product. If they can't supply original replacement part(s) call Customer Service toll free at 1-866-762-4050 for referral information.

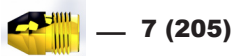
When calling Customer Service have ready:

- Model number of your heater
- The replacement part number

PARTS LIST

ITEM	PART	DESCRIPTION	QTY
1	163986-01A	Remote Operated Gas Valve	1
2	161918-02A	Pilot Assembly	1
3	WAB09	Pilot Tube	1
4	N/A order #2	Thermocouple	1
5	161920-01B	Propane Air Mixer	1
6	160960-04B	Pipe Adaptor 3/8" NPT	1
7	161919-01A	Propane Injector 18" Set	1
8	161919-02A	Propane Injector 24" Set	1
9	161919-03A	Propane Injector 30" Set	1
10	163990-01A	Heat Shield	1
11	163991-01A	Pilot Bracket	1
12	163989-01A	Transmitter, Remote	1
13	163988-01A	Receiver, Remote	1
14	ML083-02	Igniter, Piezo	1
PARTS AVAILABLE - NOT SHOWN			
	NDW0811-LP	Propane Pilot Orifice	1

PARTS LIST



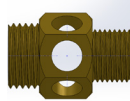
— 7 (205)



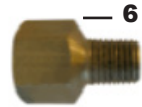
— 8 (222)



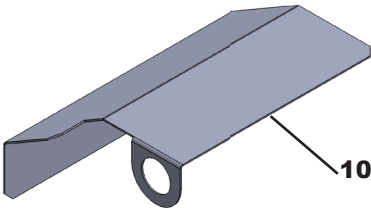
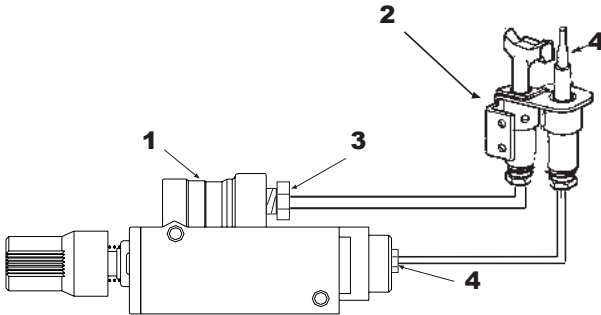
— 9 (245)



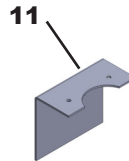
— 5



— 6



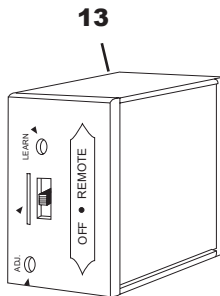
10



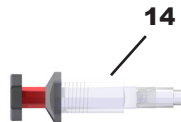
11



12



13



14

WARRANTY

KEEP THIS WARRANTY

Model _____

Serial No. _____

Date Purchased _____

Keep receipt for warranty verification.

REGISTER YOUR PRODUCT AT WWW.BLUEGRASSLIVING.COM

BLUEGRASS LIVING LIMITED WARRANTIES

New Products

Standard Warranty: Bluegrass Living warrants this new product and any parts thereof to be free from defects in material and workmanship for a period of one (1) year from the date of first purchase from an authorized dealer provided the product has been installed, maintained and operated in accordance with Bluegrass Living's warnings and instructions.

For products purchased for commercial, industrial or rental usage, this warranty is limited to 90 days from the date of first purchase.

Factory Reconditioned Products

Limited Warranty: Bluegrass Living warrants factory reconditioned products and any parts thereof to be free from defects in material and workmanship for a period 30 days from the date of first purchase from an authorized dealer provided the product has been installed, maintained and operated in accordance with Bluegrass Living's warnings and instructions. No return will be authorized. Parts will be provided to repair the product.

Terms Common to All Warranties

The following terms apply to all of the above warranties:

Always specify model number and serial number when contacting the manufacturer. To make a claim under this warranty, the bill of sale or other proof of purchase must be presented.

This warranty is extended only to the original retail purchaser when purchased from an authorized dealer, and only when installed by a qualified installer in accordance with all local codes and instructions furnished with this product.

This warranty covers the cost of part(s) required to restore this product to proper operating condition and an allowance for labor when provided by a Bluegrass Living Authorized Service Center or a provider approved by Bluegrass Living. Warranty parts must be obtained through authorized dealers of this product and/or Bluegrass Living who will provide original factory replacement parts. Failure to use original factory replacement parts will void this warranty.

Traveling, handling, transportation, diagnostic, material, labor and incidental costs associated with warranty repairs, unless expressly covered by this warranty, are not reimbursable under this warranty and are the responsibility of the owner.

Excluded from this warranty are products or parts that fail or become damaged due to misuse, accidents, improper installation, lack of proper maintenance, tampering or alteration(s).

This is Bluegrass Living's exclusive warranty, and to the full extent allowed by law; this express warranty excludes any and all other warranties, express or implied, written or verbal and limits the duration of any and all implied warranties, including warranties of merchantability and fitness for a particular purpose to one (1) year on new products and 30 days on factory reconditioned products from the date of first purchase.

Bluegrass Living makes no other warranties regarding this product.

Bluegrass Living's liability is limited to the purchase price of the product and Bluegrass Living shall not be liable for any other damages whatsoever under any circumstances including direct, indirect, incidental, or consequential damages.

Some states do not allow limitations on how long an implied warranty lasts or the exclusion or limitation of incidental or consequential damages, so the above limitation or exclusion may not apply to you.

This warranty gives you specific legal rights, and you may also have other rights which vary from state to state.



Bluegrass Living Inc.
2701 Industrial Drive
Bowling Green, KY 42101

Rev. A
12/2022
164003-01A