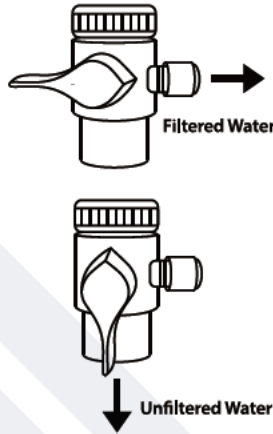


Routine Maintenance

- By controlling the diverter valve stem, the system can produce filtered water through the spout of the filter and unfiltered water directly from the kitchen faucet.
- The housing and cap can be gently cleaned using a washcloth or soft brush. Bleach can be used for sanitation. Rinse thoroughly afterwards.

Caution

- Use cold water ONLY. Do NOT direct hot water into the unit.
- Do NOT close the diverter knob while the cold water faucet is on. Always close the faucet first to prevent damaging the diverter.



Changing the filters

- Disconnect the water supply and hold the filter unit over the sink.
- Unscrew the housing from the cap - care must be taken as the housing will be full of water, as well as evidence of minor leakage.
- Gently remove and replace the cartridge.
- Repeat the steps as described in **Starting for the First Time** section.

Warranty Registration

To register your product for the warranty, visit our website at 123filter.com and go to the "Warranty" tab.

We provide a 30-day money-back guarantee, a 1-year manufacturer warranty, and lifetime tech support for all of our products. However, we do not have order information from websites other than 123Filter.com (Amazon, Home Depot, etc.), so please fill in that information upon registering your system. If you have any questions or concerns about your product, please call or email us, or put it in the notes/comments upon registering your warranty. Your satisfaction is our business!

If you are happy with our products and service, please show your support by writing a product review on Amazon, even just a single line. It takes you just a minute but it means a lot to us. Thank you!

iSpring Water Systems

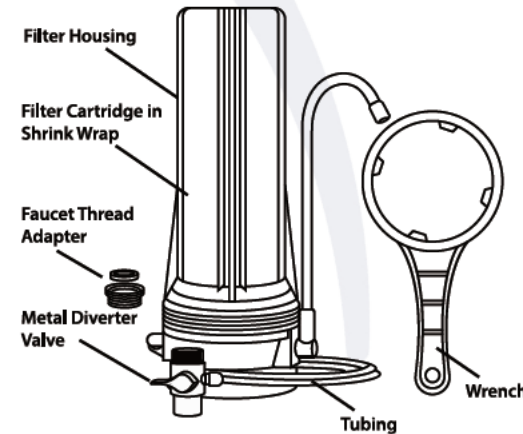
678-261-7611
support@123filter.com
www.123filter.com
Atlanta, GA USA



iSpring CKC Series Installation Guide

Ver. 12/2021

Packing List and Components



Item	Specification
Model	CKC1&2 series
Working Pressure	10 - 80 psi
Working Temperature	41 - 100°F
* For residential use ONLY.	
** CKC1 series only have one cartridge and CKC2 has two cartridges in the package	

Part	Description	Qty
Filter Housing	10 inch height, with base and spout	1
Filter Cartridge in Shrink Wrap	2.5 inch x 10 inch	1
Wrench	housing wrench, model #AWR2	1
Tubing	1/4 inch by 3 ft.	1
Metal Diverter Valve	with O-ring	1
Faucet Thread Adapter	male to male, with O-ring	1

Product Features

Multi-layer Filtration Performance

Stage	Filter	Note
1 st	GAC Carbon Filter, Model #FC15	<ul style="list-style-type: none"> • While the CKC1 series uses the first stage filters, the CKC2 series uses both two-stage filters. • Both filters need to be replaced every 6 months.
2 nd	CTO Carbon Filter, Model #FG15	<ul style="list-style-type: none"> • The water flow rate will vary depending on the incoming water quality, which will also limit the performance of the system and reduce filter life.

Precautions

- The unit should only be placed on flat surfaces. Do not mount the product on a wall.
 - The operating temperature ranges from 41-100°F. If the water or ambient temperature falls below 41°F, immediately shut off the inline water supply, and drain the remaining water from the system.
 - If leaking occurs, shut off the inline water supply by turning off the faucet. Then disconnect the system and contact the iSpring customer service team.
 - Only use authorized iSpring parts and filters. Using unauthorized or aftermarket components will void the product warranty.
 - Unauthorized modification and disassembly are strictly prohibited and will void the warranty.
 - Performance data was tested under standard laboratory conditions; actual performance may vary.
- ▲ Choking hazard. Small parts are included. Please keep the package out of reach from small children at ALL times.

Installation

Step 1: Preparation

- A. Check the packing list to confirm all accessories are included. Contact the iSpring customer service team if any components are missing.
- B. Choose a suitable location for the system. Again, it cannot be mounted and must be placed on a flat surface. Ensure the system is installed INDOORS using a cold water supply.
- C. Wash and dry your hands thoroughly to ensure all open cuts are covered. This prevents the filter cartridge and housing from becoming contaminated.

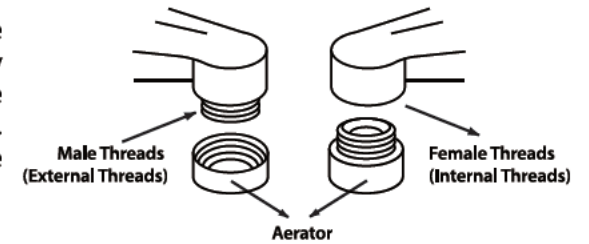
Note: The countertop filter systems are easy to install. No tools are required.

Step 2: Installing the filter cartridge

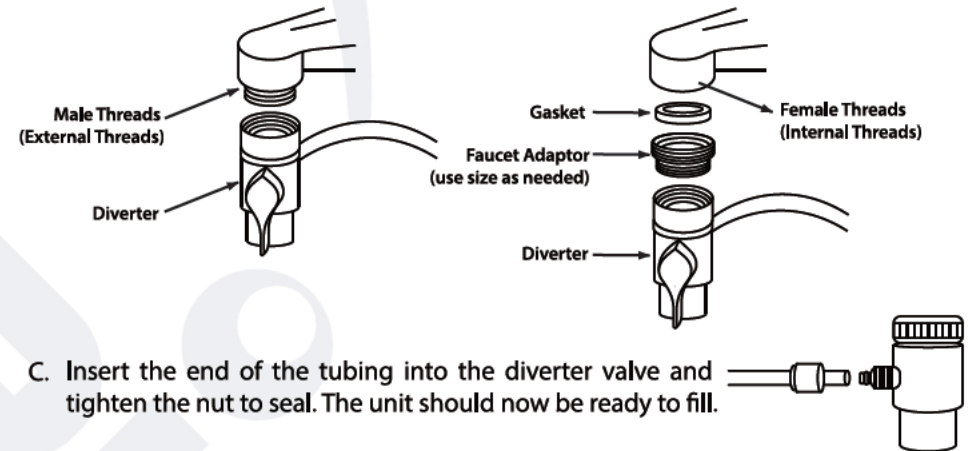
- A. To separate the filter cap, unscrew the housing in a counterclockwise direction (as viewed from above). Remove the shrink wrap from the filter cartridge.
****PLACE THE GAC FILTER WITH THE ARROW POINTING UPWARDS****
- B. Place the filter cartridge back into the housing cap.
- C. After securing the O-ring, screw the housing back on. Hand tightening is typically enough, but the housing wrench can be used to create an additional 1/4 to 1/2 of a turn if necessary. Do not over-tighten the housing, as this can make future cartridge replacements difficult.

Step 3: Connecting the tubing and diverter valve to the kitchen faucet

- A. Remove the aerator from the kitchen faucet. You can usually remove it by hand, but pliers are suitable in some circumstances. Save the aerator, which may be needed if the filter is removed.



- B. For faucets with male threads (external threads), screw the diverter valve onto the faucet. For faucets with female threads (internal threads), use the adaptor and gasket to fit the faucet, then install the diverter valve. Usually, the adaptor and diverter valve can be hand tightened; if necessary, use a hex screwdriver.



- C. Insert the end of the tubing into the diverter valve and tighten the nut to seal. The unit should now be ready to fill.

Using the System

Starting for the First Time

- A. To start the system, turn the unit upside down. Then turn on the cold tap and diverter valve to gently fill the unit for the first time. Check for leaks. During the first fill, it may take some time for the water to appear through the outlet spout.
- B. Once the unit is full, place it upright.
- C. Allow the water to run into the sink for at least 10 minutes. Then leave the filter in water for 24 hours. Do not use it to condition the source water. After 24 hours, flush the filter for another 5 minutes. The filter is ready for regular use.