

MOUNTING KIT INSTRUCTIONS

Find your mounting option(s) inside and follow the directions to get set up.

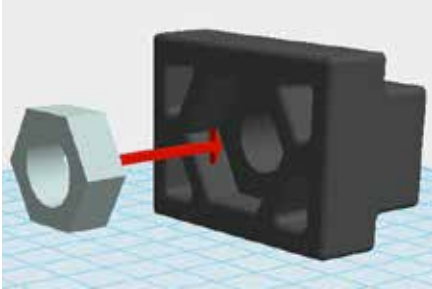


WaterPORT

www.theWaterPORT.com

MOUNTING INSTRUCTIONS

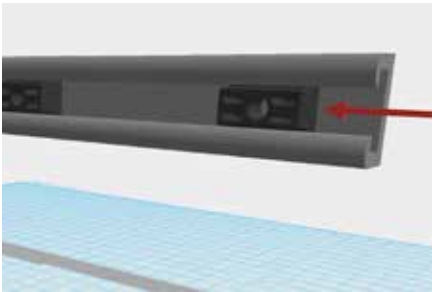
BED RAIL MOUNT



STEP 1

PREPARE T-NUTS

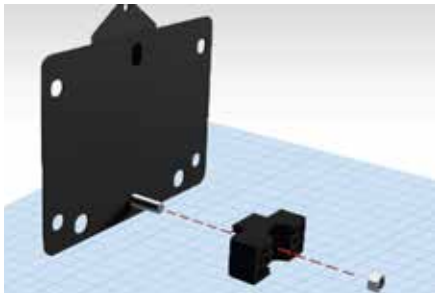
Insert 5/16" jam nut (thin nut) into the back of each T-slot nut.



STEP 2

INSERT INTO BED RAIL

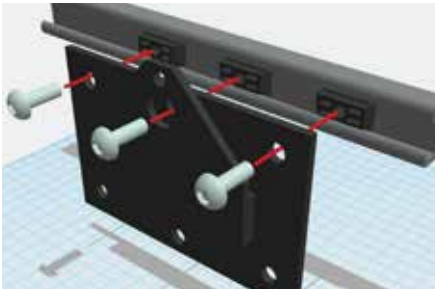
Insert the T-slot nut into the bed rail by sliding them into the front or back of your rail. Make sure they are aligned with the upper bolt holes on your mounting bracket.



STEP 3

ATTACH BRACE

Insert the 5/16" bolt through the bottom center of your universal mount. Slide in the 5/16" lock nut into the center of the plastic clamp. Tighten until the clamp is securely fastened to the universal bracket.



STEP 4

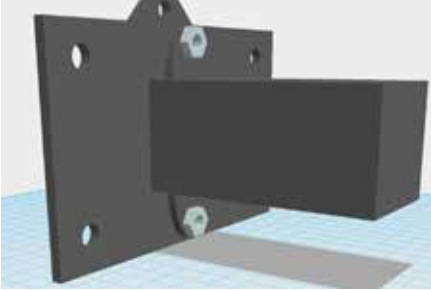
MOUNTING PLATE

Once aligned, thread bolts through. Screw in all three 5/16" bolts into the T-slot nuts. Fasten screws until the mounting bracket is firmly attached to your vehicle's bed rails.

Always lock your tank in the mount while driving. Slide a bolt or padlock through the hole in the top of the mounting bracket to lock your tank in place.

MOUNTING INSTRUCTIONS

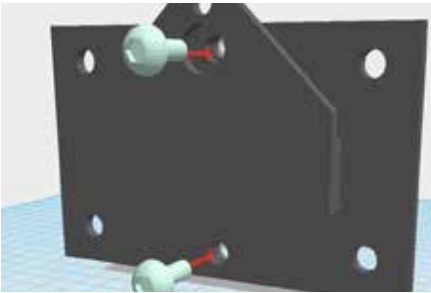
TRAILER HITCH MOUNT



STEP 1

ATTACH BAR AND BRACKET

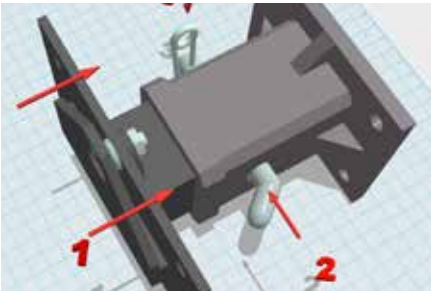
Position the hitch bar over the center holes of the mounting bracket.



STEP 2

LOCK INTO POSITION

Fasten the hitch bar by using two 5/16" bolts and two lock nuts.



STEP 3

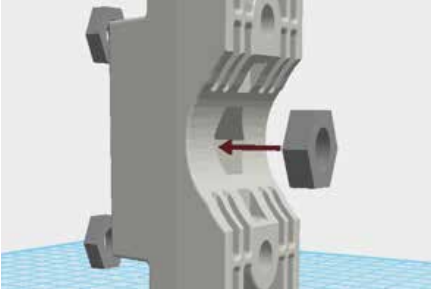
INSERT INTO HITCH

Insert the hitch bar into your standard 2" hitch receiver, ensuring the holes are aligned for your cotter pin. Insert the provided cotter pin through the receiver hole, make sure clip is securely attached.

Always lock your tank in the mount while driving. Slide a bolt or padlock through the hole in the top of the mounting bracket to lock your tank in place.

MOUNTING INSTRUCTIONS

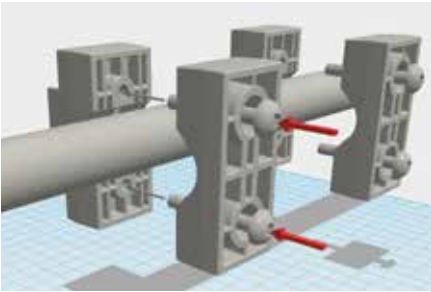
BAR MOUNT



STEP 1

PREPARE CLAMPS

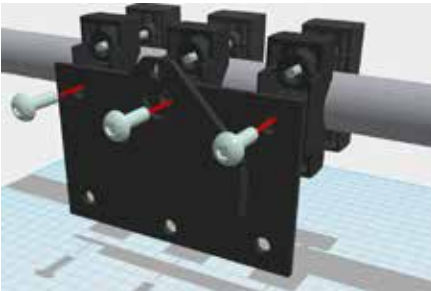
Insert the 5/16" lock nut into the center of Clamp A. Insert 1/4" nuts to both the top and bottom holes of Clamp A.



STEP 2

SEAT CLAMPS ON BAR

Once all 3 clamps are securely fastened, connect the mounting bracket to the clamps using three 5/16" bolts.



STEP 3

MOUNTING PLATE

Fasten clamp A and clamp B around the bar using the long 1/4" bolts. Before tightening, check to confirm the bar clamps line up with the 3 holes in the mounting bracket. Once aligned, use the provided allen wrench to tighten the clamps firmly to the bar.

Always lock your tank in the mount while driving. Slide a bolt or padlock through the hole in the top of the mounting bracket to lock your tank in place.