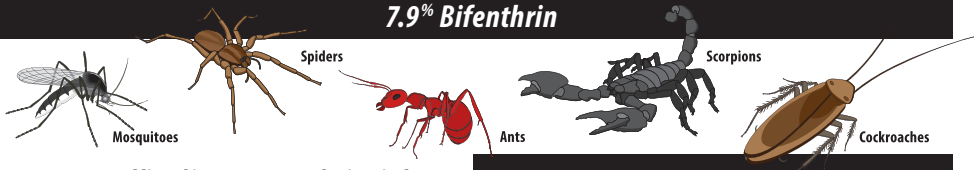


# FARMWORKS

## INDOOR/OUTDOOR INSECT CONTROL

7.9% Bifenthrin



For use to control listed insect pests and mites indoors, in interiorscapes and outdoors on ornamentals and lawns in landscaped areas around residential, institutional, public, commercial, and industrial buildings, parks, recreational areas and athletic fields.

### PESTS CONTROLLED

|            |             |               |            |
|------------|-------------|---------------|------------|
| Aphids     | Chinch Bugs | Flies         | Mosquitoes |
| Ants       | Cockroaches | Grasshoppers  | Spiders    |
| Armyworms  | Fire Ants   | Mites         | Ticks      |
| Centipedes | Fleas       | Mole Crickets | Wasps      |

### ACTIVE INGREDIENT:

|                    |        |        |
|--------------------|--------|--------|
| Bifenthrin*        | By Wt. | 7.9%   |
| OTHER INGREDIENTS: |        | 92.1%  |
| TOTAL              |        | 100.0% |

This product contains 2/3 pound active ingredient per gallon.

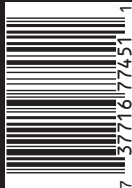
\*Cis isomers 97% minimum, trans isomers 3% maximum.

## KEEP OUT OF REACH OF CHILDREN CAUTION

See label booklet for complete Precautionary Statements and Directions For Use.

EPA Reg. No. 84009-32      0118/0423(03)  
EPA Est. No. 084840-LA-001      RM110317A

Manufactured For:  
Ragan and Massey, LLC.  
101 Ponchatoula Parkway  
Ponchatoula, LA 70454  
(800) 264-5281  
info@raganandmassey.com



NET CONTENTS: 1 GAL / 128 FL OZ / 3.79 L

## FARMWORKS® INDOOR/OUTDOOR INSECT CONTROL

- **Mix with water**
- **One fl. oz. makes one gallon of solution for most applications**

### FIRST AID

#### IF SWALLOWED

- Call a poison control center or doctor immediately for treatment advice.
- Have person sip a glass of water if able to swallow.
- Do not induce vomiting unless told to by a poison control center or doctor.
- Do not give anything by mouth to an unconscious person.

#### IF INHALED

- Move person to fresh air.
- If person is not breathing, call 911 or an ambulance, then give artificial respiration, preferably by mouth-to-mouth, if possible.
- Call a poison control center or doctor for further treatment advice.

#### IF ON SKIN OR CLOTHING

- Take off contaminated clothing.
- Rinse skin immediately with plenty of water for 15-20 minutes.
- Call a poison control center or doctor for treatment advice.

#### IF IN EYES

- Hold eye open and rinse slowly and gently with water for 15-20 minutes.
- Remove contact lenses, if present, after the first 5 minutes, then continue rinsing eye.
- Call a poison control center or doctor for treatment advice.

### HOT LINE NUMBER

Have the product container or label with you when calling a poison control center or doctor, or going for treatment. In the event of a medical emergency, call your poison control center at 1-800-222-1222 or for chemical emergency assistance call CHEMTREC® at 1-800-424-9300.

### NOTE TO PHYSICIAN

This product is a pyrethroid. If large amounts have been ingested, the stomach and intestine should be evacuated. Treatment is symptomatic and supportive. Digestible fats, oils, or alcohol may increase absorption and so should be avoided.

See inside booklet for Precautionary Statements, Directions For Use & Storage and Disposal.

### SHAKE WELL BEFORE USING

Manufactured For:  
RAGAN AND MASSEY, LLC.  
101 Ponchatoula Pkwy.,  
Ponchatoula, LA 70454  
info@raganandmassey.com  
985-386-6042

EPA Reg. No. 84009-32  
EPA Est. No. 084840-LA-001



7 37716 77451 1

# PRECAUTIONARY STATEMENTS

## HAZARDS TO HUMANS AND DOMESTIC ANIMALS

### CAUTION

Harmful if swallowed, inhaled or absorbed through skin. Avoid contact with skin, eyes or clothing. Avoid breathing spray mist. Wash thoroughly with soap and water after handling and before eating, drinking, chewing gum, using tobacco, or using the toilet. Remove contaminated clothing and wash before reuse.

All pesticide handlers (mixers, loaders and applicators) must wear long-sleeved shirt and long pants, socks, shoes and chemical-resistant gloves. After the product is diluted in accordance with label directions for use, and/or when mixing and loading using a closed spray tank transfer system (such as U-Turn™), or an in-line injector system, shirt, pants, socks, shoes and waterproof gloves are sufficient. In addition, all pesticide handlers must wear a respiratory protection device<sup>1</sup> when working in a non-ventilated space. All pesticide handlers must wear protective eyewear when working in non-ventilated space or when applying termiticide by rodding or sub-slab injection.

<sup>1</sup>Use one of the following Mine Safety and Health Administration (MSHA)/National Institute for Occupational Safety and Health (NIOSH) air purifying respirator types with approval number prefixes: TC-23C, TC-21C, TC-19C, TC-13F, and TC-14G, or a NIOSH approved respirator with any R, P or HE filter or a NIOSH approved respirator with an organic vapor (OV) cartridge or canister with any R, P or HE prefilter.

### ENVIRONMENTAL HAZARDS

This pesticide is extremely toxic to fish and aquatic invertebrates. To protect the environment, do not allow pesticide to enter or run off into storm drains, drainage ditches, gutters or surface waters. Applying this product in calm weather when rain is not predicted for the next 24 hours will help to ensure that wind or rain does not blow or wash pesticide off the treatment area. Rinsing application equipment over the treated area will help avoid runoff to water bodies or drainage systems. Care should be used when spraying to avoid fish and reptile pets in/around ornamental ponds.

This product is highly toxic to bees exposed to direct treatment or residues on blooming crops or weeds. Do not apply this product or allow to drift to blooming crops if bees are foraging the treatment area.

### PHYSICAL AND CHEMICAL HAZARDS

Do not apply water-based dilutions of this product to electrical conduits, motor housings, junction boxes, switch boxes or other electrical equipment because of possible shock hazard.

## DIRECTIONS FOR USE

It is a violation of Federal Law to use this product in a manner inconsistent with its labeling.

Aerial application is prohibited.

Application in greenhouses and nurseries is prohibited.

Application through any kind of irrigation system is prohibited.

This product may not be used on sod farm turf, golf course turf, or on grass grown for seed.

This product may not be applied as a broadcast application to interior surfaces of homes.

### INDOOR USE

In the home, all food processing surfaces and utensils should be covered during treatment or thoroughly washed before use. Exposed food should be covered or removed.

| PESTS CONTROLLED   | RATE  |
|--|---|
| <ul style="list-style-type: none"><li>• Ants</li><li>• Bees</li><li>• Beetles</li><li>• Boxelder Bugs</li><li>• Centipedes</li><li>• Cockroaches</li><li>• Crickets</li><li>• Earwigs</li><li>• Firebrats</li><li>• Flies</li><li>• Millipedes</li><li>• Pillbugs</li><li>• Scorpions</li><li>• Silverfish</li><li>• Sowbugs</li><li>• Spiders</li><li>• Ticks</li><li>• Wasps</li></ul> | 0.02 – 0.06% suspension<br>(0.33 – 1 fl. oz/gallon water) |

(continued)

| PESTS CONTROLLED <i>(continued)</i>   | RATE |
|---|------|
| <p><b>REMARKS</b></p> <p>For residual control of the listed pests in buildings, structures, and on modes of transport, apply as a crack and crevice, pinstream, spot, coarse, low pressure spray (25 psi or less), or with a paint brush. Do not use as a space spray, or as a broadcast application to interior surfaces of homes. Apply to areas where pests hide, paying special attention to cracks and crevices. Apply to baseboards, corners, storage areas, closets, around water pipes, doors and windows, in attics and eaves, behind and under refrigerators, cabinets, sinks, furnaces, stoves, under shelves, drawers and similar areas.</p> <p><b>Cockroaches, Crickets, Firebrats, Scorpions, Silverfish, Spiders, and Ticks:</b> Apply as a coarse, low pressure spray to areas where these pests hide.</p> <p><b>Ants:</b> Apply to trails, around doors and windows and other places where ants may be found.</p> <p><b>Bees and Wasps:</b> Apply to nests late in the evening when insects are at rest. Thoroughly spray nest as well as its entrance and surrounding areas where insects alight.</p> <p><b>Boxelder Bugs, Centipedes, Earwigs, Beetles, Millipedes, Pillbugs, and Sowbugs:</b> Apply around doors and windows and other places where these pests may be found or where they may enter premises. Also spray baseboards and storage areas.</p> |      |

**Mixing Directions:** See mixing directions in “Pest Control on Outside Surfaces and Around Buildings” section.

Dilute this product with water for spray or brush application. First fill the sprayer with the desired volume of water and then add this product. Before spraying, close and shake sprayer to insure proper mixing. Prepare only the amount of solution needed for the application. If pest pressure is high, the area may need to be retreated to ensure and/or maintain control. Reapply only if there are signs of renewed insect activity, and do not reapply more than once a week (7 days).

#### **FOOD/FEED HANDLING ESTABLISHMENT APPLICATIONS**

Applications of this product are permitted in food/feed and non-food/feed areas of food/feed handling establishments as a general surface, spot treatment, or crack and crevice treatment.

Food/feed handling establishments are any place other than private residences where food/feed is held, processed, prepared or served. Included are areas for receiving, storing, packing (canning, wrapping, bottling, boxing), and preparing of food/feed. These also include areas of edible waste storage and enclosed processing systems (dairies, mills, edible oils, syrups). Serving areas where food is exposed and the facility is in operation are also considered food areas.

Permitted nonfood/feed areas are areas such as garbage rooms, lavatories, floor drains (to sewers), entries and vestibules, offices, locker rooms, machine rooms, garages, mop closets and storage (after canning or bottling). All areas where insects hide or through which insects may enter should be treated.

Permitted use sites include, but are not limited to: Aircraft (Do not use in aircraft cabins), apartment buildings, bakeries, bottling facilities, breweries, buses, cafeterias, candy plants, canneries, dairy processing plants, food manufacturing and processing plants, food service establishments, granaries, grain mills, hospitals, hotels, industrial buildings, laboratories, poultry/egg/meat processing plants, motor/mobile homes, nursing homes, offices, rail-cars, restaurants, schools, ships, trailers, trucks, vessels, warehouses, and wineries.

#### **General Surface Application**

Do not use this method of application in food/feed handling establishments when the facility is in operation or food/feeds are exposed. Cover or remove all food/feed handling and/or processing equipment during application. Do not apply directly to food/feed products. After application in food processing plants, bakeries, cafeterias, and similar facilities, wash all equipment, benches, shelving, and other surfaces which food will come into contact with. Clean food handling and processing equipment and thoroughly rinse with clean, fresh water.

#### **Spot, Crack and Crevice Application**

Spot or crack and crevice applications may be made while the facility is in operation; however, food must be covered or removed from the area being treated. Do not apply directly to food.

#### **Foam Applications**

This product may be converted to foam and the foam used to treat structural voids to control or prevent pest infestations. Dilute 0.33 to 1.0 fluid oz. of this product per gallon of water and add the manufacturers recommended amount of foaming agent to produce a 0.02 to 0.06% foam concentration. Before treatment, be sure that the foaming agent is compatible with this product.

**ANT CONTROL**

| PEST LOCATION  | RATE   |
|--|--|
| <b>Nuisance Ants Indoors</b>   | Dilute 0.5 – 1.0 fl. oz in one gallon of water.<br>Apply one gallon of dilution per 1,000 square feet. |
| <p><b>REMARKS</b></p> <p>Locate and treat ant nests where possible. Apply as a crack and crevice, pinstream, spot, coarse, low pressure spray (25 psi or less) or with a paint brush. Do not use as a space spray, or as a broadcast application to interior surfaces of homes. Apply where ants have been seen or would be expected to look for food. Areas to consider include: baseboards, in and behind cabinets, under and behind appliances, around pipes, cracks and crevices and in corners. Be sure to treat entry points such as around doors and windows.</p> <p>When using with baits, apply this product as indicated above, and use baits in untreated areas.</p>    |  |
| <b>Carpenter Ants Indoors</b>  | 0.5 – 1.0 fl. oz in one gallon of water.<br>Apply one gallon of dilution per 1,000 square feet.        |
| <p><b>REMARKS</b></p> <p>Apply where ants have been seen or would be expected to look for food. Areas to consider include: baseboards, in and behind cabinets, under and behind appliances, around pipes, cracks and crevices and in corners. Be sure to treat entry points such as around doors and windows.</p> <p>Apply as a spray or foam into cracks and crevices, or drill holes and apply as spray, mist, or foam into areas where carpenter ants or their nests are present. Do not use as a space spray, or as a broadcast application to interior surfaces of homes. When using with baits, apply this product as indicated above, and use baits in untreated areas.</p> |  |
| <b>Nuisance Ants Outdoors</b><br><b>Carpenter Ants Outdoors</b>  |  |
| <p><b>REMARKS</b></p> <p>Locate and treat ant nests where possible. Apply where ants have been seen or would be expected to look for food. Apply to the perimeter using the applications described in the "Pest Control on Outside Surfaces and Around Buildings" instructions. Higher dilutions and/or volumes may be required when treating concrete surfaces.</p>   |  |
| <ul style="list-style-type: none"> <li>• <b>Non-porous surfaces</b></li> </ul>   | 0.5 – 1.0 fl. oz in one gallon of water.<br>Apply one gallon per 1,000 square feet.                    |
| <p><b>REMARKS</b></p> <p>Low volume application.</p> <p>The following procedures must be followed to help achieve maximum control of the pest: Treat non-porous surfaces only in areas protected from rainfall and spray from sprinklers with low volume applications using 0.5 to 1.0 fl. oz of product per gallon of water and applying this dilution at the rate of one gallon per 1,000 square feet.</p>   |  |
| <ul style="list-style-type: none"> <li>• <b>Porous surfaces and vegetation</b></li> </ul>  | 0.5 – 1.0 fl. oz per 1,000 square feet   |
| <p><b>REMARKS</b></p> <p>High volume application. Refer to Ornamental and Perimeter Application Dilution Chart.</p>  |  |
| <ul style="list-style-type: none"> <li>• <b>Maximum residual control</b></li> </ul>  | 0.5 – 1.0 fl. oz per gallon of water.<br>Apply up to 10 gallons per 1,000 square feet.                 |

*(continued)*

**ANT CONTROL** (continued)

| PEST LOCATION  | RATE                                    |
|--|---|
| • Tree trunks  | 0.5 – 1.0 fl. oz in one gallon of water |
| <b>REMARKS</b><br>Apply this dilution to tree trunks which have carpenter ant trails, or where carpenter ants are looking for food. Be sure to completely wet the bark from the ground to as high as possible on the trunk.  |   |
| <b>Carpenter Ants in wood</b>  | 1.0 fl. oz in one gallon of water       |
| <b>REMARKS</b><br>For control of carpenter ants in trees, utility poles, fencing or deck materials, drill to find the infested cavity. Inject or foam the recommended rate into the cavity. Use sufficient volume and a tool with a splash back guard.   |   |
| <b>Carpenter Ants in soil</b>  | 0.5 – 1.0 fl oz in one gallon of water  |
| <b>REMARKS</b><br>For control of carpenter ants tunneling in soil, apply as a drench. The dilution or foam can also be injected every 8 to 12 inches. It is important to create a vertical barrier especially at the edges of walls, driveways, or other surfaces beneath which the ants may be tunneling. |   |
| <b>Carpenter Ants in wood piles and stored lumber</b>  | 0.5 – 1.0 fl oz in one gallon of water  |
| <b>REMARKS</b><br>Deliver a coarse drenching spray with a hose-end sprayer or sprinkling can. Do not use wood for lumber or burn it until one month after treatment. Do not use wood for structures.   |   |
| <b>Carpenter Ants in firewood</b>  | 1.0 fl. oz in one gallon of water       |
| <b>REMARKS</b><br>Apply the dilution to the soil where firewood will be stacked at the rate of one gallon per 8 square feet. DO NOT treat the firewood directly.   |   |

**PEST CONTROL SPECIALTY APPLICATIONS**

**Underground Services** (including cables, conduits, pipes, utility lines, wires, etc.) which are found on the outside of structures, in right-of-way areas, or in long range installation of these services.

**Soil treatments to control Ants:** Apply using a 0.06 to 0.12% FarmWorks Indoor/Outdoor Insect Control emulsion. Apply 2 gallons of emulsion per 10 linear feet to the bottom of the trench. Allow emulsion to soak into the soil, lay the services on top of the treated soil and then fill the trench with soil. To complete the barrier treatment, make another application of 2 gallons per 10 linear feet over the top of the soil surface. For best control, in wide trenches, only treat the soil around the services.

For non-porous soils, adjust the volume to 1 gallon of 0.12% FarmWorks Indoor/Outdoor Insect Control per 10 linear feet of trench. Treat both to the bottom of the open trench and the soil placed over the top of the services.

Treat the soil at the point where the service sticks out of the ground by trenching/rodding. Do not use more than 1 to 2 gallons of emulsion.

**Precautions:** Electrically active underground services must not be treated.

**Posts, Poles, and Other Constructions**

To control insect damage to wooden constructions such as signs, fences and landscape ornamentations, apply a 0.06% emulsion. Treat on all sides to create an insecticidal barrier in the soil around the wooden construction.

For poles and posts previously installed, use a sub-surface injection or apply the emulsion by gravity-flow to the soil around all sides of the pole or post. If poles and posts are less than a half-foot in diameter, apply 1 gallon of emulsion per foot of depth. If poles are larger than a half-foot in diameter, apply 1.5 gallons of emulsion per foot of depth. Make sure that the emulsion reaches a depth of 6 inches below the bottom of the wood. If treatment of larger constructions is desired, use an application rate of 4 gallons per 10 linear feet per foot of depth.

**Wood-in-Place:** This product controls the following insects in infested wood in and around structures: Ants, Carpenter Ants, wood-infesting beetles (such as Old House Borer and Powder Post). Apply by painting on, spot spraying or fan spraying 0.06% emulsion of this product to voids and galleries in damaged wood, and in spaces between wooden members of a structure, and between wood and foundations where wood is exposed. Place plastic sheeting immediately below overhead areas that are treated; no sheeting is required when treating the surface of soils in crawl spaces. Areas that are not easily accessed can be treated by drilling, and then injecting the emulsion using a crack and crevice injector into the damaged wood or void spaces. Use this method of application in addition to soil treatment or other methods to control extensive infestation of wood-infesting insects.

#### **Bees, Wasps, Hornets, and Yellow Jackets Indoor Treatment**

Apply a 0.06% emulsion of this product. For best results, apply in the late evening when pests are at rest. Ensure that sprays contact the pests and reach areas where pests breed such as under rafters in attics. Make a second application if pest pressure is high or if insects reappear.

**Important:** Before application of this product, locate all heat pipes, ducts, water and sewer lines and electrical conduits so that they can be avoided during application to prevent damage. Applications must not be made directly into electrical fixtures, sockets, or switches.

Cover all home food processing surfaces and utensils during treatment or wash them thoroughly prior to using again. Do not treat unless all birds and pets are removed prior to treatment. Aquariums must be covered before spraying. Do not permit humans or pets to contact treated surfaces until the spray has dried.

When treating poorly ventilated or overhead areas, wear unvented goggles, gloves and a respirator. Avoid touching sprayed surfaces until spray has completely dried.

Do not use in food/feed areas of food/feed handling establishments, restaurants or other areas where food/feed is commercially prepared or processed. Do not use in serving areas while food is exposed or facility is in operation. Serving areas are areas where prepared foods are served such as dining rooms but excluding areas where food may be prepared or held. Non-food/feed handling establishments are areas such as garbage rooms, lavatories, floor drains (to sewers) entries and vestibules, offices, locker rooms, machine rooms, boiler rooms, garages, mop closets and storage (after bottling or canning).

#### **Outside of Structures**

This product can be used around wood to control wood-infesting insects and other pests. Make applications with a 0.6% emulsion with a fan spray at a maximum of 25 psi to run-off.

If pests are found inside fence posts, trees or utility poles, locate the area of infestation by drilling. Inject a 0.6% emulsion. For treating bees, hornets, wasps, and yellow jackets, direct contact works best; apply in the late evening when pests are at rest. For best results, apply a saturated spray solution directly into the nest in the ground or in bushes, or in crack and crevice areas.

#### **Pests Under Slabs**

To control Ants, Cockroaches and Scorpions which live under slab areas, drill and inject 0.06% to 0.12% emulsion per 10 square feet or 2 gallons of emulsion per 10 linear feet. One gallon of emulsion should be used. Application may also be made by horizontal rodding and then injection of 1 gallon of this emulsion.

#### **How to Calculate the Active Ingredient Content of the Finished Spray Mixture**

Use the following equation to calculate the percent active ingredient that is in the spray tank after mixing this product:

$$\frac{(7.9) \times (\text{Fl. Oz. of this product added to the tank})}{(\text{Gallons of finished spray mix}) \times (128)} = \text{Percent Active Ingredient of spray mix}$$

## **LAWN AND ORNAMENTALS**

### **GENERAL APPLICATION INSTRUCTIONS**

This product may be applied in the following areas to control a wide spectrum of insects and mites:

- Interiorscapes (such as hotels, shopping malls, office buildings)
- Outdoor Plantscapes (such as around residential dwellings, ornamental gardens, parks, institutional buildings, recreational areas, athletic fields and home lawns)

This product may be applied to the following plants:

Trees, Shrubs, Foliage plants, Non-bearing fruit and nut trees (that is, perennial crops that will not produce a harvestable raw agricultural commodity during the season of application), Flowers.

This product formulation mixes readily with water and other aqueous carriers. Use this product as a tank-mix with other pesticides, including insect growth regulators. If applying as a tank mix, all precautions and limitations on each separate product label must be followed.

**Tank Mix Compatibility Testing:** A jar test is recommended prior to tank mixing to ensure compatibility of this product and other products. Use a clear glass quart jar with lid and mix the tank mix ingredients in their relative proportions. Always use water from the intended source. Invert the jar containing the mixture several times and observe the mixture for approximately ½ hour. Evaluate the solution for uniformity and stability. If the mixture balls-up, forms flakes, sludges, gels, oily films or layers, or other precipitates, it is not compatible and the tank mix combination should not be used.

**Tank Mix Preparation:** To prepare a new tank mix, add the products listed to the tank mix in the order given. After addition of each product, agitate the tank mix before adding the next product: (1) wettable powders; (2) liquids and flowable concentrates; (3) emulsifiable concentrates.

This product is an insecticide. Any insect/mite population may contain individual insects that may develop resistance to a specific pesticide product used in consecutive generations to control these pests. Prediction of resistance development is uncertain. Appropriate resistance management strategies should be followed. Contact your local extension specialist or certified crop advisors for any additional pesticide resistance management and/or Integrated Pest Management recommendations for the specific site and pest problems in your area.

In the State of New York, for application uses outdoors on ornamentals and lawns in landscaped areas around residential, institutional, public, commercial and industrial buildings, parks, recreational areas and athletic fields:

**The Following Precautionary Measures Must be Obeyed.**

A 100-foot buffer must be maintained between the application site and waters of the State. A 100-foot buffer is required for all water except those entirely privately owned with no outlet to State waters. The buffer must consist of well maintained, established vegetation (i.e., grass, etc.) growth and must be maintained to prevent the development of channels.

In New York State, do make a single repeat application of this product if there are signs of renewed insect activity, but no sooner than two weeks after the first application.

**LAWNS:** Apply this product as a broadcast treatment in volumes of up to 10 gallons per 1000 square feet for uniform coverage of grass foliage.

If applications are made in spray volumes of less than 2 gallons per 1000 square feet, immediately irrigate the treated area with at least 0.25 inches of water to ensure the product reaches pests below the grass.

**LAWN APPLICATION RATES**

Follow the application rates in the table below. Under typical conditions, excellent control of these pests can be achieved. If maximum residual control is needed, the applicator may apply this product at up to 1.0 fl. oz per 1,000 sq. ft. to control these pests.

**DIRECTIONS FOR USE OF FARMWORKS INDOOR/OUTDOOR INSECT CONTROL ON LAWNS**

| PESTS CONTROLLED   | APPLICATION RATE OF FARMWORKS INDOOR/OUTDOOR INSECT CONTROL, FL. OZ. PER 1,000 SQ FT   |
|--|--|
| <ul style="list-style-type: none"> <li>• Armyworms</li> <li>• Cutworms</li> <li>• Sod Webworms</li> </ul>  | 0.18 – 0.25<br><b>SPECIFIC APPLICATION INSTRUCTIONS</b><br>Optimum control is achieved if irrigation and mowing is delayed until one day after application.                |
|  | 1.0<br><b>SPECIFIC APPLICATION INSTRUCTIONS</b><br>Use the higher application rates if the grass is greater than 1 inch high and under conditions of severe pest pressure. |
| <ul style="list-style-type: none"> <li>• Annual Bluegrass Weevil/(Hyperodes) (Adult)</li> </ul>  | 0.25 – 0.5   |
| <p><b>SPECIFIC APPLICATION INSTRUCTIONS</b></p> <p>Time applications so that adult weevils are controlled as they leave their overwintering sites. Movement of adult weevils into grass areas starts when <i>Forsythia</i> is blooming and usually ends when flowering dogwood (<i>Cornus florida</i>) is blooming. Consult your State Cooperative Extension Service for more specific information regarding application timing.</p> |  |

(continued)

**DIRECTIONS FOR USE OF FARMWORKS INDOOR/OUTDOOR INSECT CONTROL ON LAWNS** *(continued)*

| <b>PESTS CONTROLLED</b>  | <b>APPLICATION RATE OF FARMWORKS INDOOR/OUTDOOR INSECT CONTROL,<br/>FL. OZ. PER 1,000 SQ FT</b>   |
|--|---|
| <ul style="list-style-type: none"> <li>• Banks Grass Mite</li> <li>• Mites</li> </ul>  | 0.25 – 0.5  |
| <p><b>SPECIFIC APPLICATION INSTRUCTIONS</b><br/>                     Optimum control of eriophyid mites is achieved when this product is applied with the labeled application rate of a surfactant. One repeat application (5-7 days after the first application) may be needed for acceptable control.</p>  |   |
| <ul style="list-style-type: none"> <li>• Billbugs (Adult)</li> </ul>   | 0.25 – 0.5  |
| <p><b>SPECIFIC APPLICATION INSTRUCTIONS</b><br/>                     Make applications when pests first appear (April and May). Use degree day models for determining optimum application timing. Consult your State Cooperative Extension Service for information specific to your region.<br/>                     Control of over-wintered chinch bugs is achieved by application in the spring (temperate regions only).</p>   |   |
| <ul style="list-style-type: none"> <li>• Black Turfgrass Ataenius (Adult)</li> </ul>   | 0.25 – 0.5  |
| <p><b>SPECIFIC APPLICATION INSTRUCTIONS</b><br/>                     Control of 1<sup>st</sup> and 2<sup>nd</sup> generation adults are achieved by timing applications to be made in May and July, respectively.<br/>                     Optimum control is obtained if the application in May occurs when Vanhoutte spiraea (<i>Spiraea vanhouttei</i>) and horse chestnut (<i>Aesculus hippocastanum</i>) are in full bloom. Optimum control is obtained when the July application occurs when Rose of Sharon (<i>Hibiscus syriacus</i>) is in full bloom.</p> |   |
| <ul style="list-style-type: none"> <li>• Centipedes</li> <li>• Crickets</li> <li>• Earwigs</li> <li>• Fleas (Adult)</li> <li>• Grasshoppers</li> </ul>   | <ul style="list-style-type: none"> <li>• Leafhoppers</li> <li>• Mealybugs</li> <li>• Millipedes</li> <li>• Pillbugs</li> <li>• Sowbugs</li> </ul><br>0.25 – 0.5 |
| <ul style="list-style-type: none"> <li>• Crane Flies</li> </ul>  | 0.5   |
| <p><b>SPECIFIC APPLICATION INSTRUCTIONS</b><br/>                     Treatment can be made to control early to mid-season larvae (approximately August -February) as they feed on plant crowns. Treatments made late-season (approximately March, April) may only provide suppression.</p>   |   |

*(continued)*

**DIRECTIONS FOR USE OF FARMWORKS INDOOR/OUTDOOR INSECT CONTROL ON LAWN** *(continued)*

| <b>PESTS CONTROLLED</b>  | <b>APPLICATION RATE OF FARMWORKS INDOOR/OUTDOOR INSECT CONTROL, FL. OZ. PER 1,000 SQ FT</b>  |
|--|--|
| <ul style="list-style-type: none"> <li>• Chinch Bugs</li> </ul>  | <p align="center">0.25 – 0.5</p> <p><b>SPECIFIC APPLICATION INSTRUCTIONS</b><br/>                     Optimal control occurs if the grass is irrigated before treatment so that this product can move to the base of the grass plant and thatch area where chinch bugs are found.<br/>                     When the thatch layer is thick or grass height maintained at a high level, a higher volume application may be made.</p> |
|  | <p align="center">1.0</p> <p><b>SPECIFIC APPLICATION INSTRUCTIONS</b><br/>                     In mid-summer, chinch bugs, especially if nymphs and adults are present, become more difficult to control and this higher rate should be used.</p>  |
| <ul style="list-style-type: none"> <li>• Ants</li> <li>• Japanese Beetle (Adult)</li> <li>• Fleas (Larvae)</li> </ul>  | <p align="center">0.5 – 1.0</p>  |
| <p><b>SPECIFIC APPLICATION INSTRUCTIONS</b><br/>                     Use a higher volume application when treating areas where flea larvae develop such as in the soil in shaded areas.<br/>                     When the grass is treated with this product at the 0.25 fluid oz. per 1,000 square feet rate to control adult fleas, larvae can be controlled by increasing the application volume by two- to four-fold.</p>  |  |
| <ul style="list-style-type: none"> <li>• Imported Fire Ants</li> </ul>   | <p align="center">Broadcast application: 1.0<br/>                     Mound Application: 1 teaspoon per 1 gallon of water</p>  |
| <p><b>SPECIFIC APPLICATION INSTRUCTIONS</b><br/>                     Optimal control is achieved using a combination of broadcast application and mound drenches in the morning or evening when the temperature is between 65 and 80°F.<br/>                     Irrigate prior to application if the soil is dry, or a higher volume application can be used.<br/>                     Apply 1 to 2 gal. of finished spray to each mound area by sprinkling the mound until it is wet. Treat a four-foot diameter circle around the mound.<br/>                     For spray rig applications that are calibrated to apply 1 fluid oz per 1,000 square feet of this product in 5 gallons per 1,000 square feet, the spray tank contains the approximate dilution (equivalent to 1 teaspoon per gallon) required for fire ant mound drenches.</p> |  |
| <ul style="list-style-type: none"> <li>• Mole Cricket (Adult)</li> </ul>   | <p align="center">0.5 – 1.0</p>  |
| <p><b>SPECIFIC APPLICATION INSTRUCTIONS</b><br/>                     Make applications in the early spring late in the day and water-in this product with up to 0.5 inches of water immediately after treatment.<br/>                     Irrigation prior to application when soil is dry may also achieve better control to enable contact of the mole crickets with this product.<br/>                     If adult mole crickets are detected, treat the grass areas at peak egg hatch to ensure optimum control of subsequent nymph populations (see next section below).</p>   |  |

*(continued)*

**DIRECTIONS FOR USE OF FARMWORKS INDOOR/OUTDOOR INSECT CONTROL ON LAWNS** *(continued)*

| PESTS CONTROLLED  | APPLICATION RATE OF FARMWORKS INDOOR/OUTDOOR INSECT CONTROL,<br>FL. OZ. PER 1,000 SQ FT |
|---|---|
| • Mole Cricket (Nymph)  | 0.5 – 1.0   |
| <b>SPECIFIC APPLICATION INSTRUCTIONS</b><br>Treat grass areas which are heavily infested with adult mole cricket in the spring, just prior to peak egg hatch. Higher application rates and more frequent application may be needed to control larger nymphs or to achieve acceptable control. Make applications late in the day and water-in this product with up to 0.5 inches of water immediately after treatment. Irrigation prior to application when soil is dry may also achieve better control to enable contact of the mole crickets with this product.  |   |
| • Stink Bugs (including Brown Marmorated)   | 0.5 – 1.0   |
| • Ticks (including Deer Tick and Western Black-Legged Tick which may carry Lyme Disease and Rocky Mountain Spotted Fever)   | 0.5 – 1.0   |
| <b>SPECIFIC APPLICATION INSTRUCTIONS</b><br>Spot applications should not be made: treat the entire area where ticks may be found. When ground cover is dense and leaf litter heavy, a higher spray volume application may be used. A repeat application once every 7 days may be required.<br><b>Deer ticks (<i>Ixodes</i> sp.):</b> Make applications in late fall and/or early spring. Controls adult ticks which are often found on brush or grass. Controls larvae and nymphs and in mid to late spring which are found in the soil on leaf litter.<br><b>American dog ticks:</b> Apply as needed from mid-spring to early fall. Controls tick larvae, nymphs and adults in and around paved or unpaved paths or roads. |   |

**FARMWORKS INDOOR/OUTDOOR INSECT CONTROL LAWN DILUTION CHART**

| Application Volume<br>Gallons Per 1,000 Sq. Ft. | Fluid Ounces* of FarmWorks Indoor/Outdoor Insect Control<br>Diluted to 100 gallons |                             |                            |                            |
|---|--|-----------------------------|----------------------------|----------------------------|
|   | 0.18 fl. oz / 1,000 sq. ft.  | 0.25 fl. oz / 1,000 sq. ft. | 0.5 fl. oz / 1,000 sq. ft. | 1.0 fl. oz / 1,000 sq. ft. |
| 1.0   | 18   | 25                          | 50                         | 100                        |
| 2.0   | 9.0  | 12.5                        | 25.0                       | 50.0                       |
| 3.0   | 6.0  | 8.3                         | 16.7                       | 33.3                       |
| 4.0   | 4.5  | 6.3                         | 12.5                       | 25.0                       |
| 5.0   | 3.6  | 5.0                         | 10.0                       | 20.0                       |
| 10.0  | 1.8  | 2.5                         | 5.0                        | 10.0                       |
|   | Fluid Ounces* of FarmWorks Indoor/Outdoor Insect Control<br>Diluted to 10 gallons  |                             |                            |                            |
| 1.0   | 1.8  | 2.5                         | 5.0                        | 10.0                       |
| 2.0   | 0.9  | 1.25                        | 2.5                        | 5.0                        |
| 3.0   | 0.60   | 0.83                        | 1.67                       | 3.33                       |
| 4.0   | 0.45   | 0.63                        | 1.25                       | 2.5                        |
| 5.0   | 0.36   | 0.5                         | 1.0                        | 2.0                        |
| 10.0  | 0.18   | 0.25                        | 0.5                        | 1.0                        |

*(continued)*

**FARMWORKS INDOOR/OUTDOOR INSECT CONTROL LAWN DILUTION CHART** *(continued)*

| Application Volume<br>Gallons Per 1,000 Sq. Ft. | Fluid Ounces* of FarmWorks Indoor/Outdoor Insect Control<br>Diluted to 5 gallons |                             |                            |                            |
|---|--|-----------------------------|----------------------------|----------------------------|
|   | 0.18 fl. oz / 1,000 sq. ft.  | 0.25 fl. oz / 1,000 sq. ft. | 0.5 fl. oz / 1,000 sq. ft. | 1.0 fl. oz / 1,000 sq. ft. |
| 1.0   | 0.9  | 1.25                        | 2.5                        | 5.0                        |
| 2.0   | 0.45   | 0.63                        | 1.25                       | 2.5                        |
| 3.0   | 0.30   | 0.42                        | 0.83                       | 1.67                       |
| 4.0   | 0.23   | 0.31                        | 0.63                       | 1.25                       |
| 5.0   | 0.18   | 0.25                        | 0.5                        | 1.0                        |
| 10.0  | --   | 0.13                        | 0.25                       | 0.5                        |
|   | Fluid Ounces* of FarmWorks Indoor/Outdoor Insect Control<br>Diluted to 1 gallon  |                             |                            |                            |
| 2.0   | --   | 0.13                        | 0.25                       | 0.5                        |
| 3.0   | --   | --                          | 0.17                       | 0.33                       |
| 4.0   | --   | --                          | 0.13                       | 0.25                       |
| 5.0   | --   | --                          | 0.1                        | 0.2                        |
| 10.0  | --   | --                          | --                         | 0.1                        |

\*To convert fluid ounces to milliliters, multiply by 29.57.

1 fluid oz. = 29.57 ml = 2 tablespoons = 6 teaspoons

Do not use household utensils to measure this product.

## ORNAMENTALS AND TREES

This product can be applied to ornamentals including trees, shrubs, ground covers, bedding plants, and foliage plants. Apply 0.125 to 1.0 fluid oz. of this product per 1,000 square feet. Dilute as needed and apply in different volumes of water to give the maximum use rate of 1.0 fluid oz. per 1,000 square feet. Do not exceed the maximum label use rate. Use low volume application equipment. Dilute with water or other carriers.

A full coverage foliar spray application can be followed by retreatments as needed. Higher rates may be needed for adequate pest control or as the foliage increases. Do not apply more often than once every seven days.

Before treating large numbers of plantings, spray only a few plants and observe one week for varietal phytotoxicity. To prevent or delay pest resistance, alternate treatments with different classes of chemistry.

### ORNAMENTAL DILUTION CHART

| Application Volume<br>Gallons Per 1,000<br>Sq. Ft. | Application Rate:<br>Gallons per Acre | Fluid Ounces* of FarmWorks Indoor/Outdoor Insect Control<br>Diluted to 100 gallons |                               |                              |                              |
|--|---------------------------------------|--|-------------------------------|------------------------------|------------------------------|
|  |                                       | 0.125 fl. oz/<br>1,000 sq. ft.   | 0.25 fl. oz/<br>1,000 sq. ft. | 0.5 fl. oz/<br>1,000 sq. ft. | 1.0 fl. oz/<br>1,000 sq. ft. |
| 2.3  | 100                                   | 5.4  | 10.8                          | 21.7                         | 43.5                         |
| 4.6  | 200                                   | 2.7  | 5.4                           | 10.9                         | 21.7                         |
| 6.9  | 300                                   | 1.8  | 3.6                           | 7.2                          | 14.5                         |
|  |                                       | Fluid Ounces* of FarmWorks Indoor/Outdoor Insect Control<br>Diluted to 10 gallons  |                               |                              |                              |
| 2.3  | 100                                   | 0.54   | 1.08                          | 2.17                         | 4.35                         |
| 4.6  | 200                                   | 0.27   | 0.54                          | 1.09                         | 2.17                         |
| 6.9  | 300                                   | 0.18   | 0.36                          | 0.72                         | 1.45                         |

*(continued)*

**ORNAMENTAL DILUTION CHART** *(continued)*

| Application Volume<br>Gallons Per 1,000<br>Sq. Ft.                              | Application Rate:<br>Gallons per Acre | Fluid Ounces* of FarmWorks Indoor/Outdoor Insect Control<br>Diluted to 5 gallons |                                |                               |                               |
|---|---------------------------------------|--|--------------------------------|-------------------------------|-------------------------------|
|   |                                       | 0.125 fl. oz./<br>1,000 sq. ft.  | 0.25 fl. oz./<br>1,000 sq. ft. | 0.5 fl. oz./<br>1,000 sq. ft. | 1.0 fl. oz./<br>1,000 sq. ft. |
| 2.3   | 100                                   | 0.27   | 0.54                           | 1.09                          | 2.17                          |
| 4.6   | 200                                   | 0.14   | 0.27                           | 0.54                          | 1.09                          |
| 6.9   | 300                                   | --   | 0.18                           | 0.36                          | 0.72                          |
| Fluid Ounces* of FarmWorks Indoor/Outdoor Insect Control<br>Diluted to 1 gallon |                                       |  |                                |                               |                               |
| 2.3   | 100                                   | --   | 0.11                           | 0.22                          | 0.44                          |
| 4.6   | 200                                   | --   | --                             | 0.11                          | 0.22                          |
| 6.9   | 300                                   | --   | --                             | --                            | 0.15                          |

\*To convert fluid ounces to milliliters, multiply by 29.57.

1 fluid oz. = 29.57 ml = 2 tablespoons = 6 teaspoons

Do not use household utensils to measure this product.

**How to Determine the Dilution Rates using the Ornamental Application Rates Table and the Ornamental Dilution Chart**

- Determine the pest which is most difficult to control.
- Find the fl. oz. of FarmWorks Indoor/Outdoor Insect Control application rate from one of the tables.
- Determine the application volume and amount of spray mix needed.
- Refer to the Ornamental Dilution Chart to find the appropriate volume of this product to be mixed in the desired volume of water.

In the State of New York, for application uses outdoors on ornamentals and lawns in landscaped areas around residential, institutional, public, commercial and industrial buildings, parks, recreational areas and athletic fields:

**The Following Precautionary Measures Must be Obeyed.**

A 100-foot buffer must be maintained between the application site and waters of the State. A 100-foot buffer is required for all water except those entirely privately owned with no outlet to State waters. The buffer must consist of well maintained, established vegetation (i.e., grass, etc.) growth and must be maintained to prevent the development of channels.

In New York State, do make a single repeat application of this product if there are signs of renewed insect activity, but no sooner than two weeks after the first application.

**ORNAMENTAL APPLICATION RATES**

Consult the following table for the application rates to control the listed pests under typical conditions. The applicator has the option of applying this product at up to 1 fluid oz. per 1,000 square feet to control each of the pests listed in this Table under conditions where maximum residual control is desired.

**DIRECTIONS FOR USE OF FARMWORKS INDOOR/OUTDOOR INSECT CONTROL ON ORNAMENTALS**

**APPLICATION RATE OF FARMWORKS INDOOR/OUTDOOR INSECT CONTROL INSECTICIDE**

| PESTS CONTROLLED  | FL. OZ. PER 1,000 SQ.FT. |
|---|--------------------------|
| • Bagworms  | 0.125 – 0.25             |
| <b>SPECIFIC APPLICATION INSTRUCTIONS</b>  |                          |
| For optimum control, applications should be made directly onto the larvae as the larvae begin to hatch. |                          |

*(continued)*

**APPLICATION RATE OF FARMWORKS INDOOR/OUTDOOR INSECT CONTROL INSECTICIDE** *(continued)*

| PESTS CONTROLLED  | FL. OZ. PER 1,000 SQ. FT. |
|---|---------------------------|
| <ul style="list-style-type: none"> <li style="width: 25%;">• Cutworms</li> <li style="width: 25%;">• Fall Webworms</li> <li style="width: 25%;">• Lace Bugs</li> <li style="width: 25%;">• Tent Caterpillars</li> <li style="width: 25%;">• Elm Leaf Beetles</li> <li style="width: 25%;">• Gypsy Moth Caterpillars</li> <li style="width: 25%;">• Leaf Feeding Caterpillars</li> </ul>   | 0.125 – 0.25              |
| <ul style="list-style-type: none"> <li style="width: 25%;">• Adelgids</li> <li style="width: 25%;">• Budworms</li> <li style="width: 25%;">• Flea Beetles</li> <li style="width: 25%;">• Millipedes</li> <li style="width: 25%;">• Sowbugs</li> <li style="width: 25%;">• Ants</li> <li style="width: 25%;">• Centipedes</li> <li style="width: 25%;">• Fungus Gnats (Adults)</li> <li style="width: 25%;">• Mites</li> <li style="width: 25%;">• Spider Mites</li> <li style="width: 25%;">• Aphids</li> <li style="width: 25%;">• Cicadas</li> <li style="width: 25%;">• Mosquitoes</li> <li style="width: 25%;">• Spiders</li> <li style="width: 25%;">• Bees</li> <li style="width: 25%;">• Citrus Thrips</li> <li style="width: 25%;">• Grasshoppers</li> <li style="width: 25%;">• Orchid Weevil</li> <li style="width: 25%;">• Spittlebugs</li> <li style="width: 25%;">• Beet Armyworm</li> <li style="width: 25%;">• Clover Mites</li> <li style="width: 25%;">• Japanese Beetle (Adults)</li> <li style="width: 25%;">• Pillbugs</li> <li style="width: 25%;">• Thrips</li> <li style="width: 25%;">• Black Vine Weevil (Adults)</li> <li style="width: 25%;">• Crickets</li> <li style="width: 25%;">• Plant Bugs (including Lygus spp.)</li> <li style="width: 25%;">• Tip Moths</li> <li style="width: 25%;">• Brown Soft Scales</li> <li style="width: 25%;">• Diaprepes (Adults)</li> <li style="width: 25%;">• Leafhoppers</li> <li style="width: 25%;">• Treehoppers</li> <li style="width: 25%;">• Broad Mites</li> <li style="width: 25%;">• Earwigs</li> <li style="width: 25%;">• Leafrollers</li> <li style="width: 25%;">• Psyllids</li> <li style="width: 25%;">• Wasps</li> <li style="width: 25%;">• European Red Mite</li> <li style="width: 25%;">• Mealybugs</li> <li style="width: 25%;">• Scorpions</li> <li style="width: 25%;">• Whiteflies</li> </ul> | 0.25 – 0.5                |
| <ul style="list-style-type: none"> <li style="width: 25%;">• Beetles</li> <li style="width: 25%;">• California Red Scale (Crawlers)</li> <li style="width: 25%;">• San Jose Scales (Crawlers)</li> <li style="width: 25%;">• Pine Needle Scales (Crawlers)</li> <li style="width: 25%;">• Twig Borers</li> <li style="width: 25%;">• Weevils</li> </ul>   | 0.25 – 0.5                |
| <p><b>SPECIFIC APPLICATION INSTRUCTIONS</b><br/>Direct sprays to foliage of plants and to tree trunks, stems and twigs.</p>   |                           |
| <ul style="list-style-type: none"> <li style="width: 25%;">• Imported Fire Ants**</li> <li style="width: 25%;">• Pecan Leaf Scorch Mite</li> <li style="width: 25%;">• Pine Shoot Beetle (Adults)</li> <li style="width: 25%;">• Sawfly larvae</li> <li style="width: 25%;">• Stink Bugs (including Brown Marmorated)</li> </ul>  | 0.5 – 1.0                 |
| <p><b>SPECIFIC APPLICATION INSTRUCTIONS</b><br/>**For foraging ants.</p>  |                           |
| <ul style="list-style-type: none"> <li>• Spider Mites</li> </ul>  | 0.5 – 1.0                 |
| <p><b>SPECIFIC APPLICATION INSTRUCTIONS</b><br/>For optimal control, apply during spring through mid-summer. For control during mid- to late-summer, it may be necessary to use higher rates and/or more frequent applications. Increased control may be achieved with the addition of a surfactant or horticultural oil. Tank-mixes with other registered mite control products may increase the effectiveness of this product. Rotate the use of this product with other insecticides with different modes of action. Consult your local Cooperative Extension Service for resistance management recommendations in your region.</p>  |                           |

**PEST CONTROL ON OUTSIDE SURFACES AND AROUND BUILDINGS**

Follow additional Application Restrictions for Residential Outdoor Surface and Space Sprays below.

Applications to vertical exterior surfaces (e.g., foundations) are permitted to a maximum height of 3 feet from ground level. Sections of vertical exterior surfaces that abut non-porous horizontal surfaces can only be treated if either 1) these sections are protected from rainfall and spray from sprinklers or 2) they do not drain into a sewer, storm drain, or curbside gutter (e.g., not to sections that abut driveways or sidewalks that drain into streets).

This product may be applied to the following sites:

- Eaves
- Outside surfaces of buildings
- Exterior siding
- Other areas where listed pests are present
- Foundations
- Patios
- Garages
- Porches
- Lawns; including grass areas adjacent or around private homes, duplexes, townhouses, condominiums, house trailers, apartments complexes, carports, garages, fence lines, storage sheds, barns, and other residential and non-commercial structures
- Refuse dumps
- Soil
- Trunks of woody ornamentals
- Window frames

### Additional Application Restrictions for Residential Outdoor Surface and Space Sprays:

All outdoor applications must be limited to spot or crack- and crevice treatments only, except for the following uses:

1. Treatment to soil or vegetation around structures;
2. Applications to lawns, turf and other vegetation;
3. Applications to building foundations, up to a maximum height of 3 feet.

Other than applications to building foundations, all outdoor applications to impervious surfaces such as sidewalks, driveways, patios, porches and structural surfaces (such as windows, doors and eaves) are limited to spot and crack-and-crevice applications only.

For the desired application rate, use the chart below to determine the amount of this product for 1 gallon of finished emulsion.

#### FARMWORKS INDOOR/OUTDOOR INSECT CONTROL OUTSIDE SURFACES APPLICATION DILUTION CHART

| Concentration of Active Ingredient | Dilution Rate                 |
|------------------------------------|-------------------------------|
| 0.02%                              | 0.33 fl. oz. per 1 gal. water |
| 0.06%                              | 1.0 fl. oz. per 1 gal. water  |

Follow the application instructions in the table below to control target pests.

#### FARMWORKS INDOOR/OUTDOOR INSECT CONTROL OUTSIDE SURFACES APPLICATION INSTRUCTIONS

| PESTS CONTROLLED  |   |
|---|---|
| <ul style="list-style-type: none"><li>• Ants</li><li>• Carpenter Ants</li><li>• Fire Ants</li><li>• Armyworms</li><li>• Bees</li><li>• Beetles<sup>1</sup></li><li>• Biting Flies</li></ul>   | <ul style="list-style-type: none"><li>• Boxelder Bugs</li><li>• Centipedes</li><li>• Chiggers</li><li>• Chinch Bugs</li><li>• Clover Mites</li><li>• Crickets</li><li>• Cutworms</li></ul>  |
| <ul style="list-style-type: none"><li>• Dichondra Flea Beetles</li><li>• Earwigs</li><li>• Elm Leaf Beetles</li><li>• Firebrats</li><li>• Fleas</li><li>• Flies</li><li>• Grasshoppers</li><li>• Hornets</li><li>• Japanese Beetles<sup>1</sup></li></ul>   | <ul style="list-style-type: none"><li>• Millipedes</li><li>• Moths</li><li>• Roaches (including Cockroaches)</li><li>• Scorpions</li><li>• Silverfish</li><li>• Sod Webworms</li><li>• Sowbugs (Pillbugs)</li><li>• Spiders (including Black Widow Spiders)</li><li>• Springtails</li><li>• Ticks (including Brown Dog Ticks)</li><li>• Wasps</li></ul> |
| <sup>1</sup> Not for use in California  |   |
| SPECIFIC APPLICATION INSTRUCTIONS   |   |
| Use a 0.02 to 0.06% emulsion as a residual spray in a spray volume of up to 10 gallons of emulsion per 1,000 square feet. For thorough coverage of plants with dense foliage, use the higher application volume.<br>The higher rate should be used for heavy pest infestation, quicker knockdown or longer residual control.<br>Repeat applications at no more than once every seven days under severe insect infestation or if insects return. |   |
| <b>Barrier Treatment:</b> To prevent infestation of buildings, apply to a band of soil and vegetation 6 to 10 feet wide around and adjacent to the building. Apply from the base of the foundation to 2-3 feet above the foundation. Use dilutions of 0.33 to 1.0 fluid oz. of this product per 1,000 square feet in sufficient water to provide adequate coverage (refer to Perimeter Application Dilution Chart).                             |   |
| <ul style="list-style-type: none"><li>• Ants and Fire Ant Mounds</li></ul>  |   |
| SPECIFIC APPLICATION INSTRUCTIONS   |   |
| Use this product at a dilution of 0.06% emulsion.<br>Apply using the Drench Method by applying 1 to 2 gal. of finished spray to each mound area by sprinkling the mound until it is wet. Treat a four-foot diameter circle around the mound. If the mound diameter is greater than one foot, use the higher volume. Optimum results are achieved if applications are made during cool hours of the day.   |   |
| <ul style="list-style-type: none"><li>• Mosquitoes</li></ul>  |   |
| SPECIFIC APPLICATION INSTRUCTIONS   |   |
| Use a dilution rate of 0.33 to 1.0 fluid oz. of this product per gallon of water. Apply one gallon of emulsion per 1,000 square feet to treat around landscapes, lawn and buildings. If applications at higher volume are required, dilute this product at lower concentrations and apply at greater volumes to deliver the desired amount of product per area (refer to the Ornamental or Perimeter Application Dilution Charts).              |   |

**FARMWORKS INDOOR/OUTDOOR INSECT CONTROL PERIMETER APPLICATION DILUTION CHART**

| Application Volume<br>Gallons Per 1,000<br>Sq. Ft. | Fluid Ounces* of FarmWorks Indoor/Outdoor Insect Control<br>Diluted to 10 gallons |                          |                           |                           |                          |
|--|---|--------------------------|---------------------------|---------------------------|--------------------------|
|  | 0.33 fl. oz/1,000 Sq. ft.   | 0.5 fl. oz/1,000 Sq. ft. | 0.67 fl. oz/1,000 Sq. ft. | 0.75 fl. oz/1,000 Sq. ft. | 1.0 fl. oz/1,000 Sq. ft. |
| 1.0  | 3.3   | 5.0                      | 6.7                       | 7.5                       | 10.0                     |
| 2.0  | 1.65  | 2.5                      | 3.35                      | 3.75                      | 5.0                      |
| 3.0  | 1.10  | 1.67                     | 2.23                      | 2.5                       | 3.33                     |
| 4.0  | 0.83  | 1.25                     | 1.67                      | 1.88                      | 2.5                      |
| 5.0  | 0.67  | 1.0                      | 1.33                      | 1.5                       | 2.0                      |
| 10.0   | 0.33  | 0.5                      | 0.67                      | 0.75                      | 1.0                      |
|  | Fluid Ounces* of FarmWorks Indoor/Outdoor Insect Control<br>Diluted to 5 gallons  |                          |                           |                           |                          |
| 1.0  | 1.67  | 2.5                      | 3.33                      | 3.75                      | 5.0                      |
| 2.0  | 0.83  | 1.25                     | 1.67                      | 1.88                      | 2.5                      |
| 3.0  | 0.55  | 0.83                     | 1.11                      | 1.25                      | 1.67                     |
| 4.0  | 0.42  | 0.63                     | 0.84                      | 0.94                      | 1.25                     |
| 5.0  | 0.33  | 0.5                      | 0.67                      | 0.75                      | 1.0                      |
| 10.0   | 0.17  | 0.25                     | 0.33                      | 0.38                      | 0.5                      |
|  | Fluid Ounces* of FarmWorks Indoor/Outdoor Insect Control<br>Diluted to 1 gallon   |                          |                           |                           |                          |
| 1.0  | 0.33  | 0.5                      | 0.67                      | 0.75                      | 1.0                      |
| 2.0  | 0.17  | 0.25                     | 0.33                      | 0.38                      | 0.5                      |
| 3.0  | 0.11  | 0.17                     | 0.22                      | 0.25                      | 0.33                     |
| 4.0  | --  | 0.13                     | 0.17                      | 0.19                      | 0.25                     |
| 5.0  | --  | 0.1                      | 0.13                      | 0.15                      | 0.2                      |
| 10.0   | --  | --                       | --                        | --                        | 0.1                      |

For sections of foundation that abut non-porous horizontal surfaces, the treated areas must be protected from rainfall and spray from sprinklers or they do not drain into a sewer, storm drain, or curbside gutter (e.g., not to sections that abut driveways or sidewalks that drain into streets).

\*To convert fluid ounces to milliliters, multiply by 29.57.

1 fluid oz. = 29.57 ml = 2 tablespoons = 6 teaspoons

Do not use household utensils to measure this product.

**RESTRICTION: DO NOT APPLY FARMWORKS INDOOR/OUTDOOR INSECT CONTROL AS FOLLOWS**

- As a broadcast application to interior surfaces of homes.
- To livestock buildings (barns).
- In occupied areas of institutions such as libraries, sports facilities, etc.
- To classrooms when in use.
- To occupied hospital patient rooms, or rooms in which the infirm, elderly, or children occupy for long periods of time.
- To pets, crops, or sources of electricity.
- To firewood.
- In areas where food is exposed.

**FOLLOW THESE INSTRUCTIONS WHEN USING FARMWORKS INDOOR/OUTDOOR INSECT CONTROL**

- Use in well-ventilated areas.
- When treating overhead areas of a structure, the surfaces below must be covered with plastic sheeting or similar material (exception: when applied to soil surfaces in crawl spaces).
- Avoid contact of spray solution with food, foodstuffs, food contacting surfaces, food utensils or water supplies.
- If contacted by spray solution of this product, thoroughly wash dishes and food handling utensils with soap and water.
- During indoor surface applications, prevent run-off or dripping of product.
- Allow surfaces to dry before people and pets touch treated surfaces.

## NOTE

This product will not stain or damage any surface that water alone will not stain or damage.

This product can be applied using low volume treatments with equipment such as the Micro-Injector or Actisol applicators. This same equipment may be used to make crack and crevice, deep penetration, spot, and general surface treatments.

## STORAGE AND DISPOSAL

Do not contaminate water, food, or feed by storage or disposal.

**PESTICIDE STORAGE:** Store in original containers only in a cool, dry place. Avoid excess heat. Do not store concentrate or dilute material in food or drink containers.

In case of spill, avoid contact, isolate area and keep out animals and unprotected persons. Confine spills.

To Confine Spill: If liquid, dike surrounding area or absorb with sand, cat litter or commercial clay. Place damaged packaging in a holding container and label.

**PESTICIDE DISPOSAL:** Pesticide wastes are toxic. Improper disposal of excess pesticide, spray mixture, or rinseate is a violation of Federal Law. Dispose of excess or waste pesticide by use according to label directions, or contact your State Pesticide or Environmental Control Agency, or the Hazardous Waste representative at the nearest EPA Regional Office for guidance.

### CONTAINER HANDLING:

Non-refillable container. Do not reuse or refill this container. Triple rinse container (or equivalent) promptly after emptying. Triple rinse as follows: Empty the remaining contents into application equipment or a mix tank and drain for 10 seconds after the flow begins to drip. Fill the container ¼ full with water and recap. Shake container for 10 seconds. Pour rinseate into application equipment or a mix tank or store rinseate for later use or disposal. Drain for 10 seconds after the flow begins to drip. Repeat this procedure two more times. Then offer container for recycling, if available, or puncture and dispose of container in a sanitary landfill, or by incineration.

## CONDITION OF SALE AND LIMITATION OF WARRANTY AND LIABILITY

**NOTICE:** Read the entire Directions for Use and Conditions of Sale and Limitation of Warranty and Liability before buying or using this product. If the terms are not acceptable, return the product at once, unopened, and the purchase price will be refunded.

The Directions for Use of this product must be followed carefully. It is impossible to eliminate all risks inherently associated with the use of this product. Ineffectiveness or other unintended consequences may result because of such factors as manner of use or application, weather, presence of other materials or other influencing factors in the use of the product, which are beyond the control of Ragan and Massey, LLC. or Seller. To the extent consistent with applicable law, all such risks shall be assumed by Buyer and User, and Buyer and User agree to hold Ragan and Massey, LLC. and Seller harmless for any claims relating to such factors.

Ragan and Massey, LLC. warrants that this product conforms to the chemical description on the label and is reasonably fit for the purposes stated in the Directions for Use, subject to the inherent risks referred to above, when used in accordance with directions under normal use conditions. This warranty does not extend to the use of this product contrary to label instructions, or under abnormal conditions or under conditions not reasonably foreseeable to or beyond the control of Seller or Ragan and Massey, LLC., and Buyer and User assume the risk of any such use. **TO THE EXTENT CONSISTENT WITH APPLICABLE LAW, RAGAN AND MASSEY, LLC. MAKES NO WARRANTIES OF MERCHANTABILITY OR OF FITNESS FOR A PARTICULAR PURPOSE NOR ANY OTHER EXPRESS OR IMPLIED WARRANTY EXCEPT AS STATED ABOVE.**

To the extent consistent with applicable law, neither Ragan and Massey, LLC. nor Seller shall be liable for any incidental, consequential or special damages resulting from the use or handling of this product. **TO THE EXTENT CONSISTENT WITH APPLICABLE LAW, THE EXCLUSIVE REMEDY OF THE USER OR BUYER, AND THE EXCLUSIVE LIABILITY OF RAGAN AND MASSEY, LLC. AND SELLER FOR ANY AND ALL CLAIMS, LOSSES, INJURIES OR DAMAGES (INCLUDING CLAIMS BASED ON BREACH OF WARRANTY, CONTRACT, NEGLIGENCE, TORT, STRICT LIABILITY OR OTHERWISE) RESULTING FROM THE USE OR HANDLING OF THIS PRODUCT, SHALL BE THE RETURN OF THE PURCHASE PRICE OF THE PRODUCT OR, AT THE ELECTION OF RAGAN AND MASSEY, LLC. OR SELLER, THE REPLACEMENT OF THE PRODUCT.**

Ragan and Massey, LLC. and Seller offer this product, and Buyer and User accept it, subject to the foregoing Conditions of Sale and Limitation of Warranty and Liability, which may not be modified except by written agreement signed by a duly authorized representative of Ragan and Massey, LLC. Micro-Injector® is a registered trademark of Whitmire Micro-Gen Research Laboratories.

Actisol® is a registered trademark of Roussel-Uclaf

**KEEP OUT OF REACH OF CHILDREN  
CAUTION**

| <b>FIRST AID</b>   |   |
|--|---|
| <b>IF SWALLOWED</b>  | <ul style="list-style-type: none"><li>• Call a poison control center or doctor immediately for treatment advice.</li><li>• Have person sip a glass of water if able to swallow.</li><li>• Do not induce vomiting unless told to by a poison control center or doctor.</li><li>• Do not give anything by mouth to an unconscious person.</li></ul> |
| <b>IF INHALED</b>  | <ul style="list-style-type: none"><li>• Move person to fresh air.</li><li>• If person is not breathing, call 911 or an ambulance, then give artificial respiration, preferably by mouth-to-mouth, if possible.</li><li>• Call a poison control center or doctor for further treatment advice.</li></ul>   |
| <b>IF ON SKIN OR CLOTHING</b>  | <ul style="list-style-type: none"><li>• Take off contaminated clothing.</li><li>• Rinse skin immediately with plenty of water for 15-20 minutes.</li><li>• Call a poison control center or doctor for treatment advice.</li></ul>   |
| <b>IF IN EYES</b>  | <ul style="list-style-type: none"><li>• Hold eye open and rinse slowly and gently with water for 15-20 minutes.</li><li>• Remove contact lenses, if present, after the first 5 minutes, then continue rinsing eye.</li><li>• Call a poison control center or doctor for treatment advice.</li></ul>   |
| <b>HOT LINE NUMBER</b><br>Have the product container or label with you when calling a poison control center or doctor, or going for treatment. In the event of a medical emergency, call your poison control center at 1-800-222-1222 or for chemical emergency assistance call CHEMTREC® at 1-800-424-9300. |   |
| <b>NOTE TO PHYSICIAN</b><br>This product is a pyrethroid. If large amounts have been ingested, the stomach and intestine should be evacuated. Treatment is symptomatic and supportive. Digestible fats, oils, or alcohol may increase absorption and so should be avoided.                                   |   |

See label booklet for Precautionary Statements and Directions for Use.

**SHAKE WELL BEFORE USING**

Manufactured For:  
RAGAN AND MASSEY, LLC.  
101 Ponchatoula Parkway  
Ponchatoula, LA 70454  
info@raganandmassey.com  
985-386-6042

EPA Reg. No. 84009-32  
EPA Est. No. 084840-LA-001

