



BIG BEAR POWER

GX COMMERCIAL LLC

4301 S VALLEY VIEW BLVD. STE 10 AND 11

LAS VEGAS, NV 89103

BBC72 ASSEMBLY MANUAL



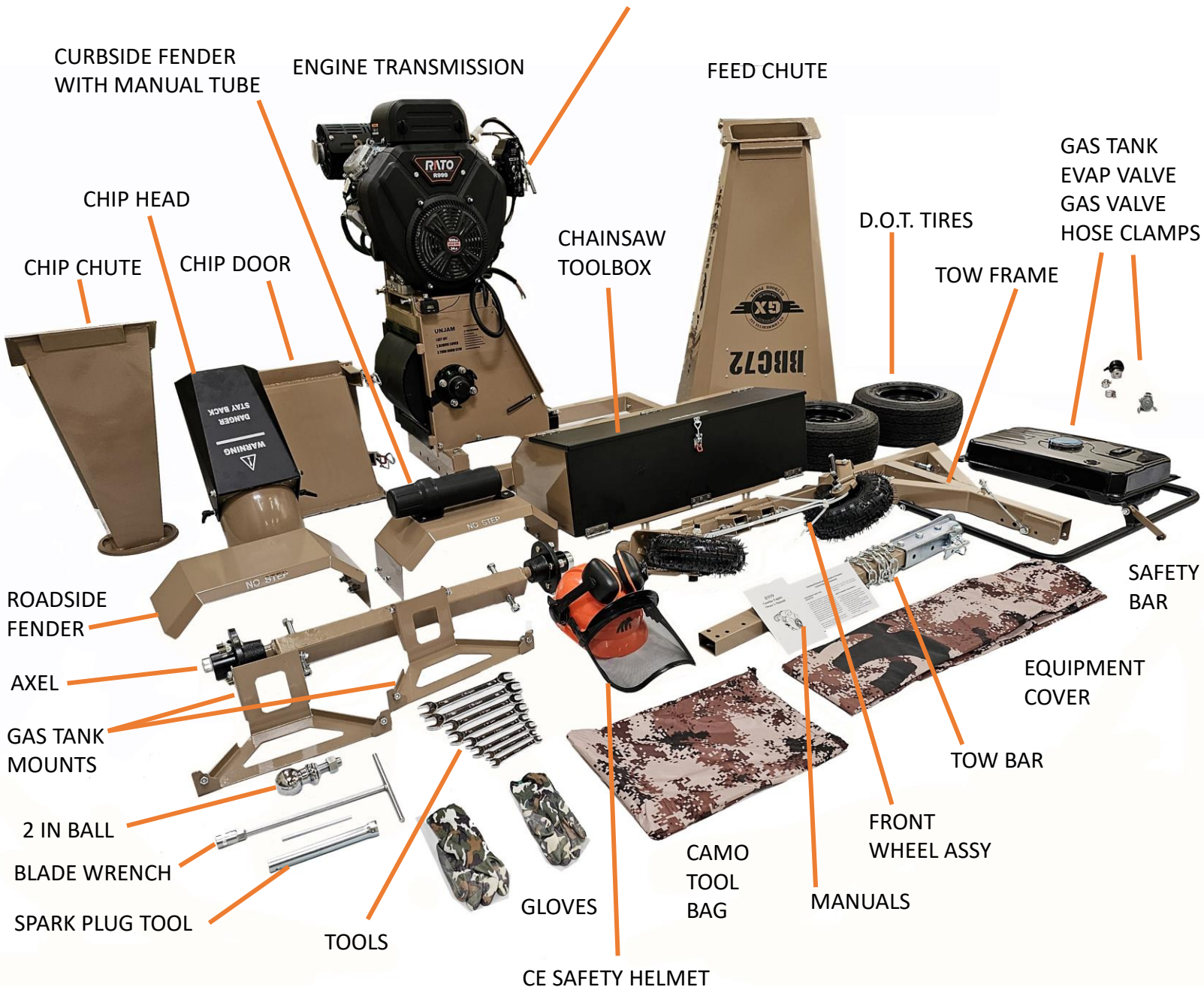
REVISED 06-23-2023

STEP 1

PART INSPECTION

1. REMOVE THE TOP AND SIDES AND PARTS FROM THE CRATE
2. UNPACK ALL PARTS AND CHECK THAT YOU HAVE EVERYTHING.
3. **LEAVE THE HEAVY ENGINE TRANSMISSION ON THE PALLET**
3. MISSING PARTS? CALL 725-274-6171 GX COMMERCIAL PARTS DEPT

LEAVE THE HEAVY ENGINE TRANSMISSION ON THE PALLET FOR THE NEXT STEP



STEP 2

PRE-DEPLOYMENT

- 1. LEAVE THE ENGINE TRANSMISSION ON THE PALLET**
- 2. WE RECOMMEND YOU ENLIST A HELPER TO ASSEMBLE THIS MACHINE**

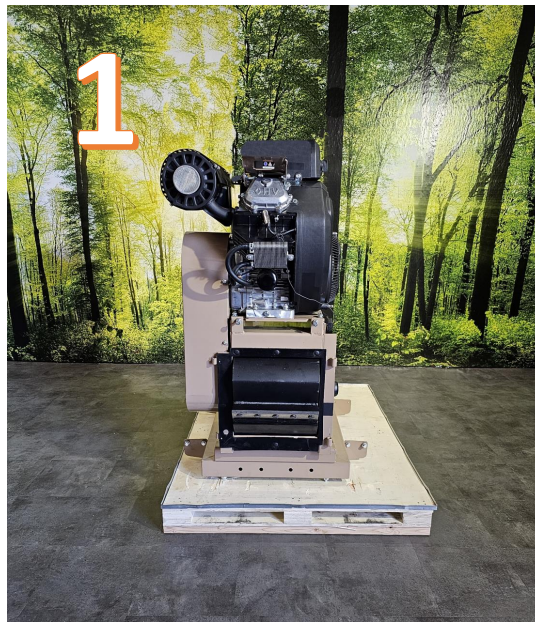


MISSING PARTS? CALL 725-274-6171 GX COMMERCIAL PARTS DEPT

STEP 3

ROTATE THE ASSEMBLY ON THE PALLET

1. FROM THE REAR STARTING POSITION LIFT THE FRAME ASSEMBLY SLIGHTLY TILTING THE TRANSMISSION FRAME FORWARD
2. START TURNING THE ASSEMBLY AS SHOWN
3. POSITION THE FRAME EXTENDING 90 DEGREES OVER HANGING THE PALLET AS SHOWN

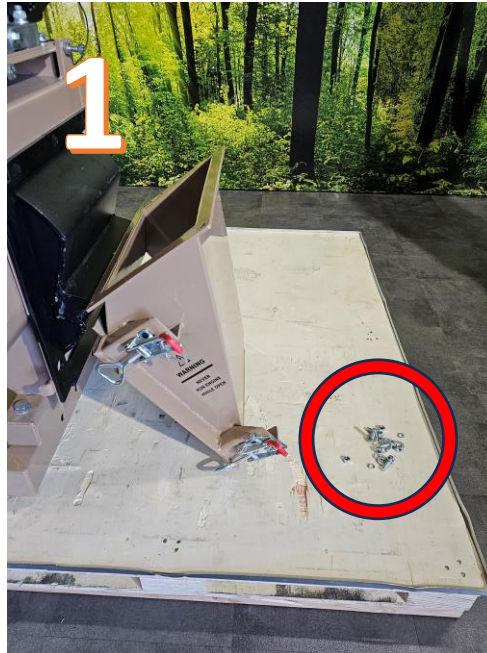


MISSING PARTS? CALL 725-274-6171 GX COMMERCIAL PARTS DEPT

STEP 4

INSTALL CHIP DOOR

- 1. IMPORTANT REMOVE NUTS AND BOLTS FROM DOOR BEFORE MOUNTING. THIS PREVENTS HARDWARE BEING DROPPED INTO THE CUTTING DRUM DURING STEP 4. REMOVE NUTS AND BOLTS AND LAY ASIDE.**
- 2. INSTALL THE CHIP DOOR ONTO THE HINGES**
- 3. CLOSE AND LATCH**

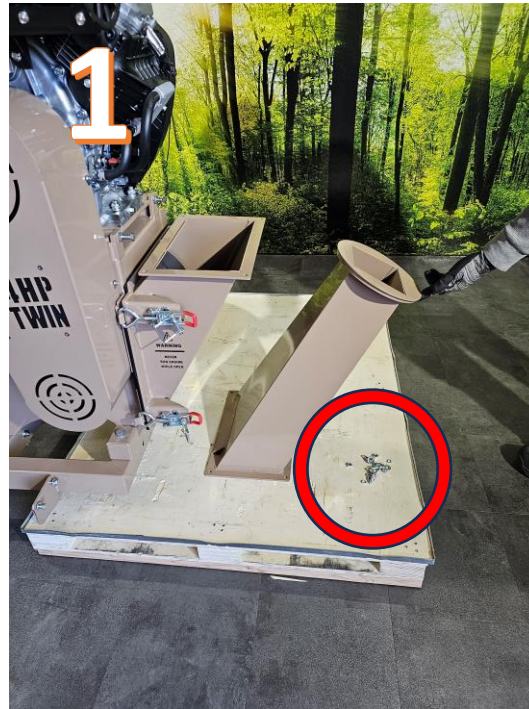


MISSING PARTS? CALL 725-274-6171 GX COMMERCIAL PARTS DEPT

STEP 5

INSTALL HIGH VELOCITY DEPLOYMENT CHIP CHUTE

- 1. IMPORTANT – DO NOT DROP HARDWARE INTO CHUTE DURING THIS STEP**
- 2. PLACE CHIP CHUTE ONTO CHIP DOOR THEN LOOSELY ASSEMBLE HARDWARE**
- 3. SQUARE UP CHUTE ON THE DOOR AND SECURELY TIGHTEN ALL HARDWARE**

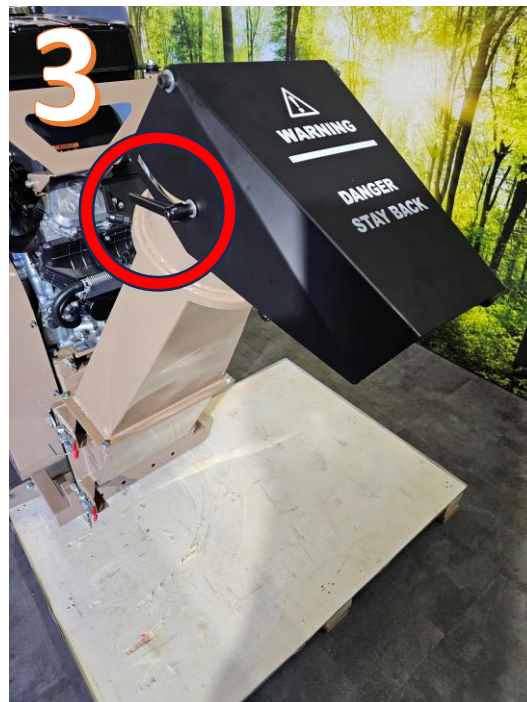
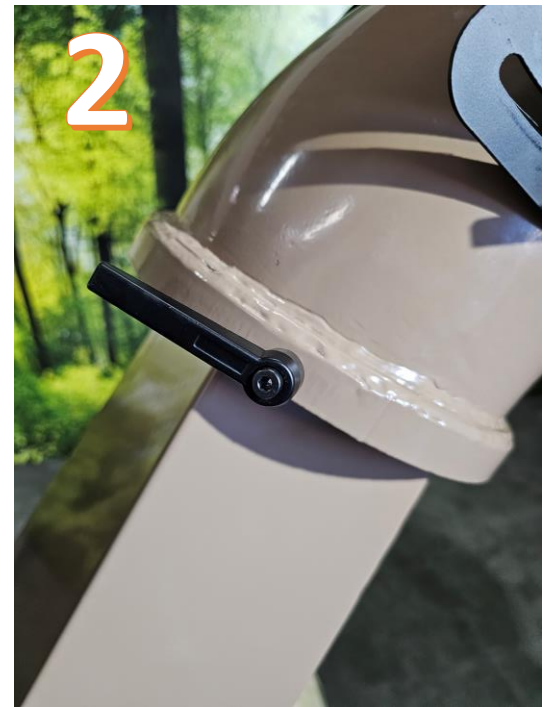


MISSING PARTS? CALL 725-274-6171 GX COMMERCIAL PARTS DEPT

STEP 6

CHIP HEAD ASSEMBLY

1. **LOOSEN 3 TOOLES CLAMPS**
2. **MOUNT CHIP HEAD ONTO THE DEPLOYMENT CHUTE AND TIGHTEN CLAMPS**
3. **TIGHTEN CHIP SHIELD ADJUSTING CLAMPS**

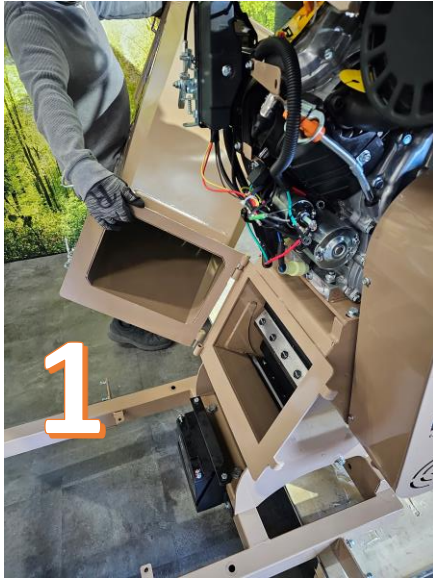


MISSING PARTS? CALL 725-274-6171 GX COMMERCIAL PARTS DEPT

STEP 7

INSTALL FEED CHUTE

1. **HOLD FEED CHUTE AS SHOWN AND LIFT**
2. **ALIGN PINS INTO HINGES – 2 PERSONS ARE RECOMMENDED FOR THIS STEP AS THIS FEED CHUTE IS HEAVY AND THEY CAN HELP ALIGN THE HINGES**
3. **CLOSE THE FEED CHUTE AND LATCH**



MISSING PARTS? CALL 725-274-6171 GX COMMERCIAL PARTS DEPT

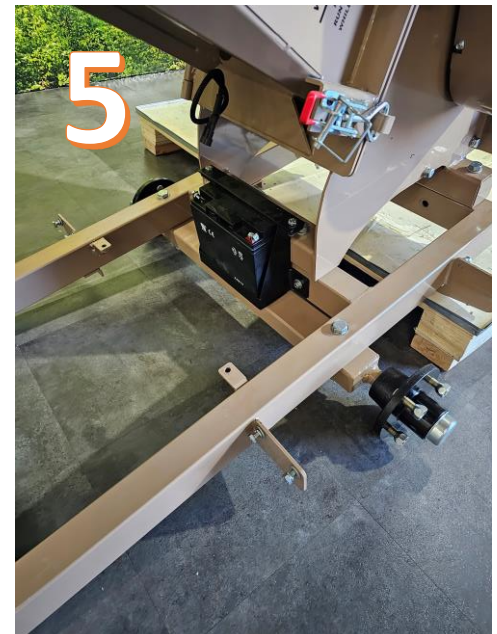
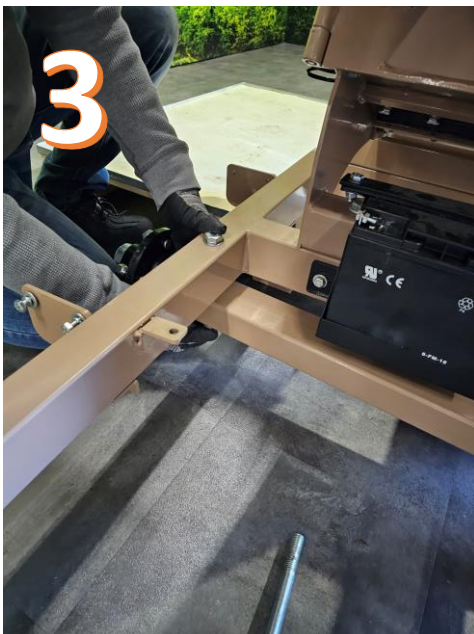
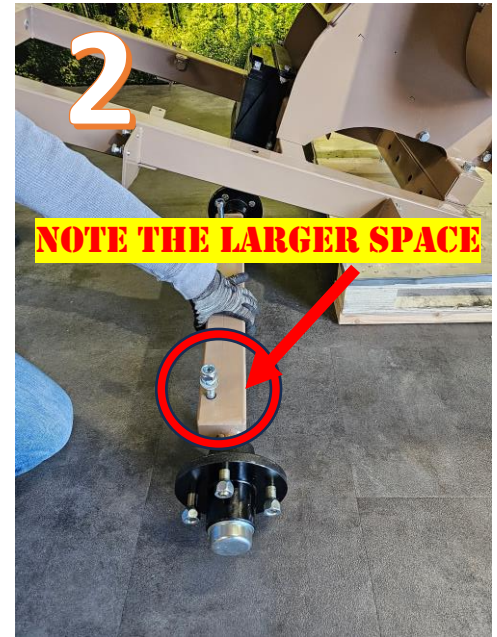
STEP 8

INSTALL AXEL – 2 PERSONS RECOMMENDED FOR THIS STEP AS THE MACHINE NEEDS TO BE BALANCED FORWARD HELD SECURELY DURING AXLE INSTALLATION

- 1. TIP THE MACHINE FORWARD NOT TO FAR – PROTECT THE LATCH FROM BEING BENT ON THE PALLET FLOOR.**
- 2. POSITION AXEL WITH MOUNTING HOLES IN POSITION SHOWN**
- 3. LOOSELY INSTALL BOLTS TO ONE SIDE – NUT ON THE BOTTOM**
- 4. INSTALL OTHER SIDE**
- 5. TIGHTEN ALL BOLTS AND SEAT NUTS ONTO LOCK WASHERS SECURELY**



WARNING
PROTECT LATCH FROM BEING BENT ON THE PALLET FLOOR.

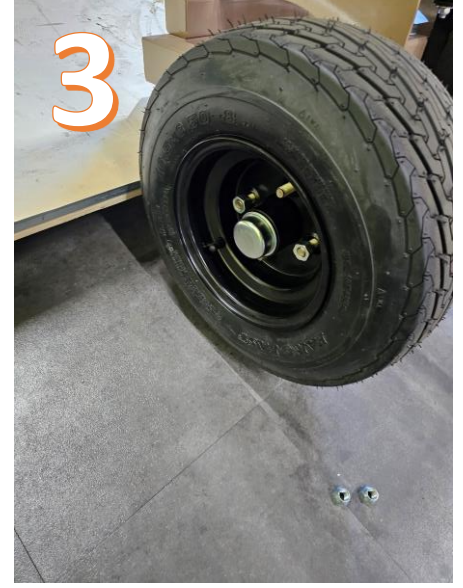


MISSING PARTS? CALL 725-274-6171 GX COMMERCIAL PARTS DEPT

STEP 9

MOUNTING THE WHEELS

1. REMOVE THE WHEEL NUTS FROM THE AXLE SPINDLES
2. INSTALL THE WHEEL WITH THE NUT TAPER TOWARD THE RIM
3. TIGHTEN THE RIM NUTS
4. REPEAT FOR THE OTHER WHEEL
5. LOWER WHEELS TO THE GROUND AND TIP THE UNIT BACK
6. REMOVE THE PALLET FROM THE WORK AREA

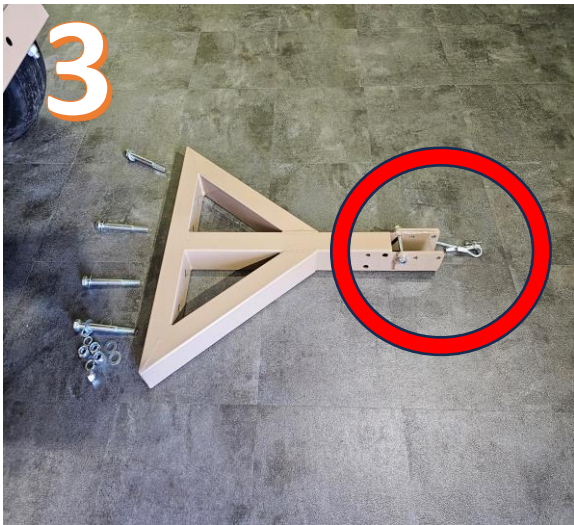


MISSING PARTS? CALL 725-274-6171 GX COMMERCIAL PARTS DEPT

STEP 10

INSTALL TOW FRAME – 2 PERSONS RECOMMENDED

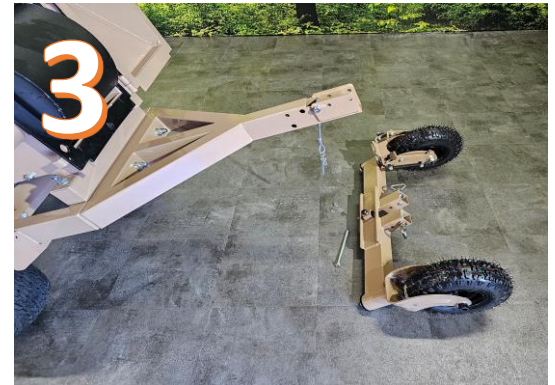
1. **ASSEMBLY HELPER SECURELY KEEPS UNIT TIPPED BACK**
2. **OPEN CHIP CHUTE TO PROVIDE FRONT WORKING SPACE. **BE CAUTIOUS OF DRUM BLADES AT ALL TIMES.****
3. **READY THE TOW FRAME NOTE BOLT DIRECTION AND OPEN CHANNEL UP**
4. **BOLT THE TOW FRAME IN PLACE – **BE CAUTIOUS OF DRUM BLADES AT ALL TIMES****



MISSING PARTS? CALL 725-274-6171 GX COMMERCIAL PARTS DEPT

STEP 11 INSTALL FRONT AXLE WHEELS **2 PERSONS REQUIRED**

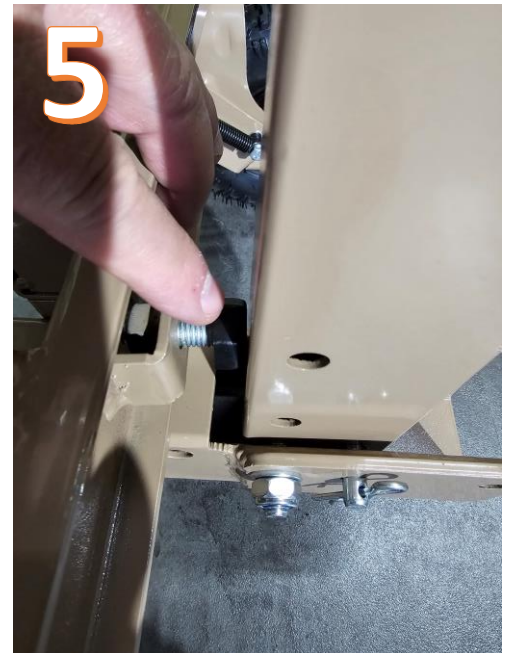
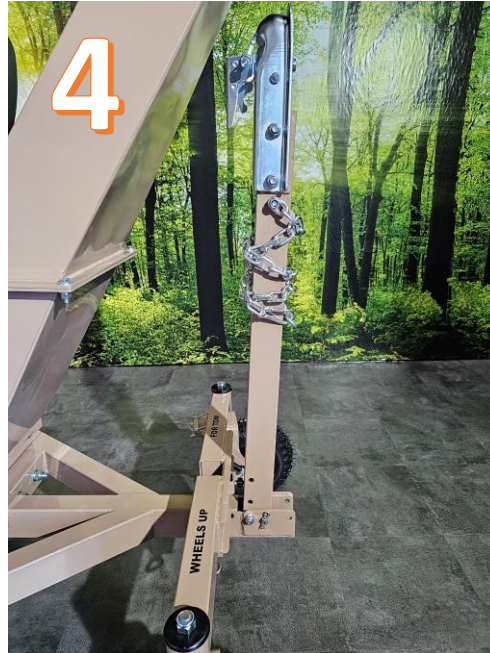
1. ENSURE NUTS ARE TIGHTENED ON SPRING PULLS
 2. CHECK BOTH PINS FOR SMOOTH OPERATION
 3. HELPER KEEPS UNIT TILTED UP READY FOR AXLE ASSEMBLY
 4. LIFT AXLE INTO PLACE AS SHOWN
 5. ALIGN PULL PINS WITH HOLES IN FRAME
 6. LOCK PINS INTO PLACE
 7. INSTALL LONG BOLT INTO REAR HOLE AS SHOWN AND TIGHTEN
 8. PULL PINS AND DROP WHEELS INTO DOWN LOCKED POSITION
 9. LOWER UNIT TO THE GROUND – CLOSE CHIP CHUTE AND LATCH
- **CAUTION** – CHIP CHUTE MAY SWING FORWARD WHEN LOWERING THE MACHINE – STAY CLEAR – HEADS UP



STEP 12

INSTALL THE FLIP AND STOW TOW BAR

1. PULL THE TOW BAR PIN AND REAR BOLT FROM THE TOW FRAME CHANNEL
2. INSTALL THE TOW BAR – REINSTALL THE BOLT AND PIN LOCK
3. FLIP UP TO STOW
4. FLIP UP ON JOB SITES FOR SAFETY
5. ADJUST STOP KNOB AS REQUIRED TO PRE-ALIGN PIN HOLES IN STOW MODE



MISSING PARTS? CALL 725-274-6171 GX COMMERCIAL PARTS DEPT

STEP 13

INSTALL FENDERS

1. **INSTALL CURB SIDE FENDER – NOTE THE MANUAL HOLDER IS PRE-INSTALLED. **DO NOT INSTALL THIS FENDER ON THE ROADSIDE.** THE FEED CHUTE WILL INTERFERE WITH THE MANUAL HOLDER WHEN UNLATCHED AND OPENED.**
2. **INSTALL 2 BOLTS IN THE REAR**
3. **INSTALL 2 BOLTS IN THE FRONT**
4. **REPEAT FOR THE ROADSIDE FENDER**

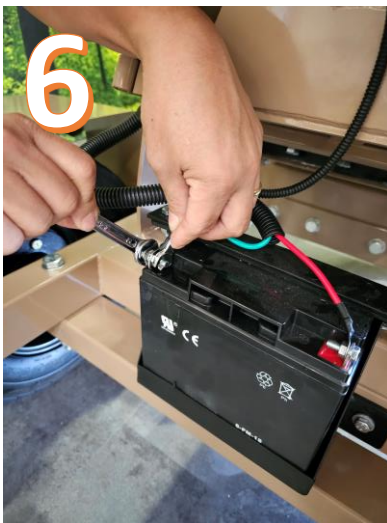


MISSING PARTS? CALL 725-274-6171 GX COMMERCIAL PARTS DEPT

STEP 14

INSTALL ELECTRICAL CONNECTIONS

1. DURING THIS PROCEDURE REMOVE THE KEY FROM KEY START AND CLOSE AND LOCK ALL CHUTES. DISCONNECT THE SPARKPLUG WIRE.
2. LOCATE THE MAIN WIRES FROM THE ENGINE AND POSITION AS SHOWN
3. CONNECT THE SAFETY BAR SHUT OFF UNTIL THE PLUGS LOCK TOGETHER
4. CONNECT RED POSITIVE + AND GREEN GROUND
5. TIGHTEN THE RED TERMINAL **DO NOT** ALLOW THE WRENCH TO TOUCH METAL TO GROUND
6. TIGHTEN THE GROUND GREEN WIRE
7. THE HOUR METER RUNS OFF THE SPARK PLUG WIRE. ONLY ONE WIRE CONNECTION IS REQUIRED, THE OTHER WIRE HAS NO CONNECTION.
8. CONNECT THE SPARKPLUG WIRE AND REINSERT YOUR ENGINE KEY



STEP 15

INSTALL CHAINSAW TOOLBOX

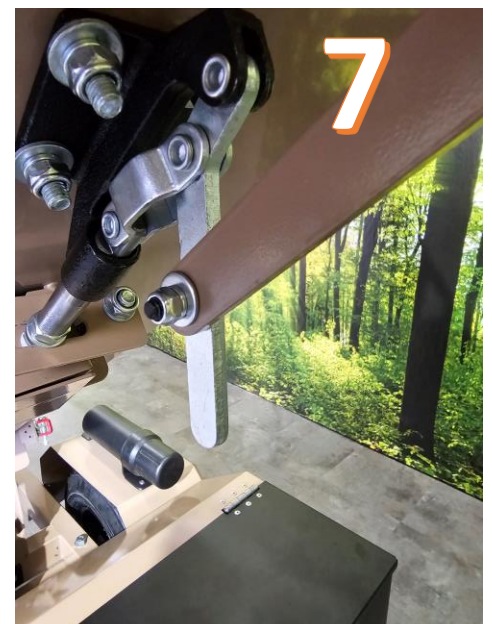
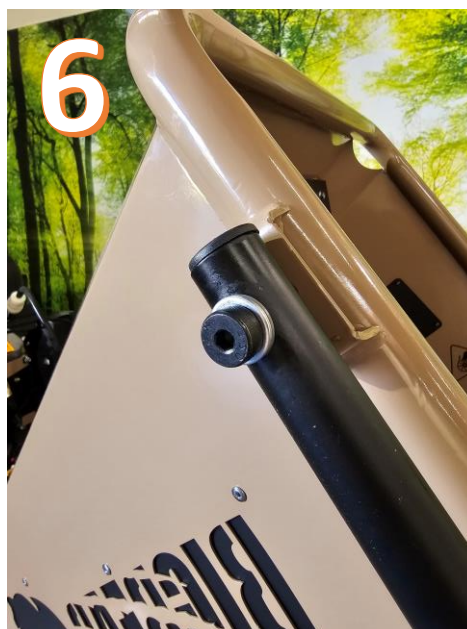
- 1. REMOVE ALL MOUNTING HARDWARE FROM TOOLBOX AND POSITION AS SHOWN**
- 2. INSTALL 1 SIDE LOOSELY**
- 3. INSTALL 2ND SIDE LOOSELY**
- 4. INSTALL 2 BOLTS IN REAR OF TOOLBOX TO THE FRAME**
- 5. TIGHTEN ALL BOLTS SECURELY**



STEP 16

INSTALL SHUT OFF BAR

1. HANG BAR AS SHOWN
2. ATTACH BROWN BAR TO ROADSIDE OF SILVER BAR
3. TIGHTEN BOLT TO ALLOW MOVEMENT
4. SWING UP BAR ATTACH TO LT SIDE – NYLON WASHERS AGAINST BAR
5. ATTACH BAR TO RT SIDE – KEEP NYLON WASHERS AGAINST BAR
6. TIGHTEN BOTH SIDES SNUG BUT ALLOW MOVEMENT OF BAR
7. TEST THE BAR, PRESSING DOWN BAR SHOULD LOCK IN PLACE AND SILVER TRIP BAR WILL POINT DOWNWARD AFTER BAR INSTALLATION



STEP 17

PREPARE THE GAS TANK FOR MOUNTING

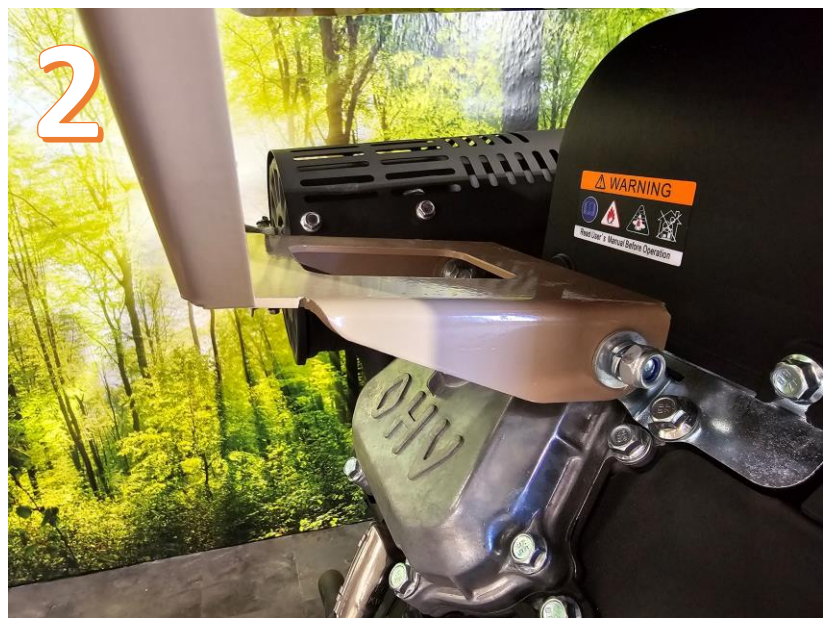
1. **READY PARTS – EVAP VALVE, GAS VALVE, HOSE CLAMPS**
2. **INSTALL EVAP VALVE – ORIENT HOSE TUBE AS SHOWN – PRESS VALVE INTO PLACE ON THE TANK**
3. **INSTALL GAS VALVE**
4. **ORIENT GAS CONNECTION TUBE AS SHOWN BEFORE TIGHTENING**



STEP 18

INSTALL TANK MOUNTS TO THE ENGINE

1. **READY THE LEFT-HAND TANK BRACKET**
2. **INSTALL ON LEFT OF ENGINE AS SHOWN, TIGHTEN LOOSELY**
3. **READY THE RIGHT-HAND TANK BRACKET**
4. **INSTALL ON RIGHT OF ENGINE AS SHOWN, TIGHTEN LOOSELY**



STEP 19

INSTALL TANK TO THE ENGINE

1. **INSTALL TANK WITH GAS VALVE ON THE FEED CHUTE SIDE**
2. **CONNECT ALL 4 MOUNTING CORNERS**
3. **TIGHTEN ALL BOLTS MOUNTING TO THE ENGINE AND TO THE TANK**
4. **INSTALL GAS LINE AND HOSE CLAMPS**
5. **LOCATE THE LONG EVAPORATION HOSE COMING FROM THE ENGINE**
6. **CONNECT THE HOSE TO THE EVAP VALVE ON THE GAS TANK**



FINISH LINE

CONGRATULATIONS ON A GREAT JOB ASSEMBLING !

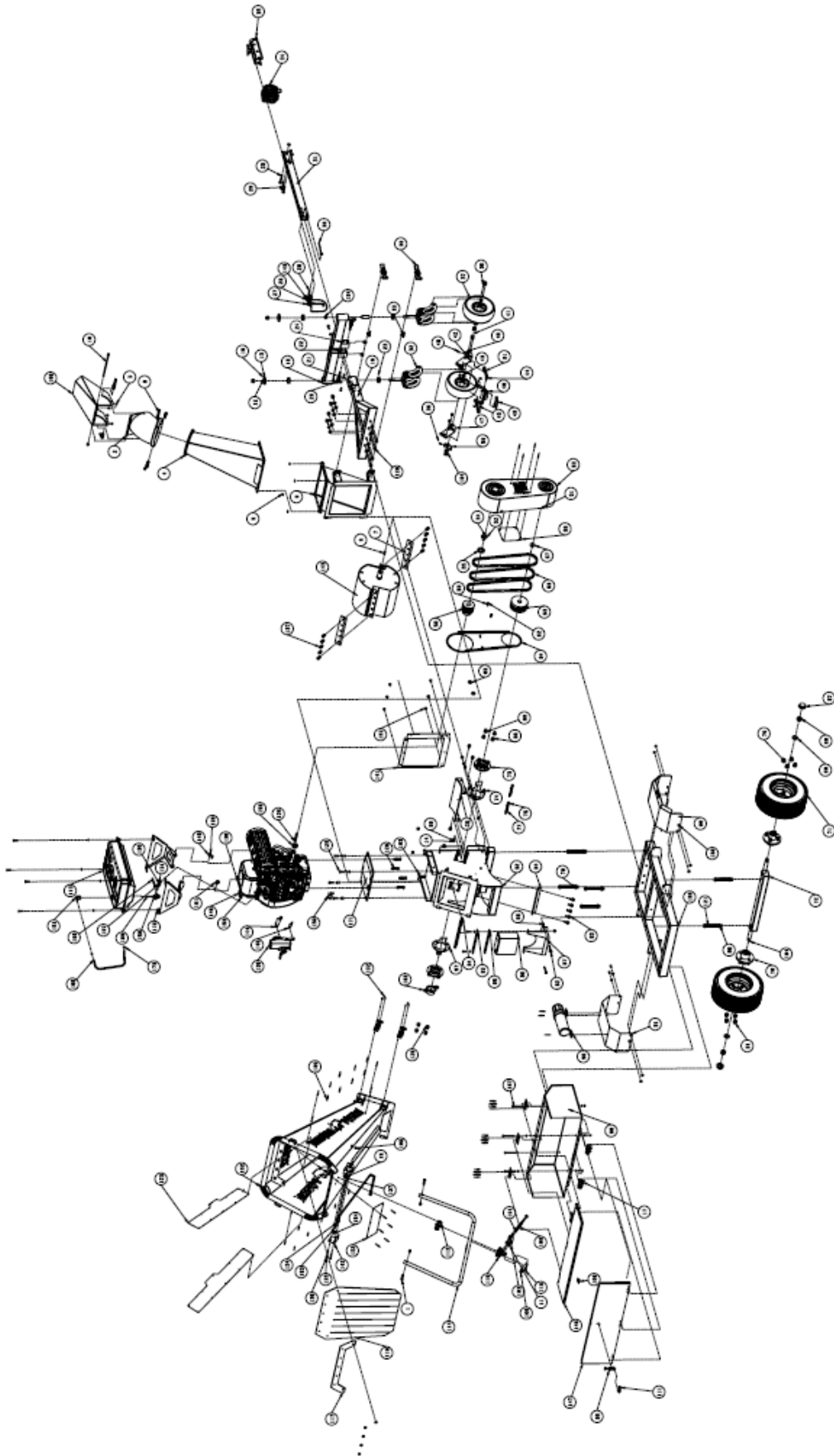
- 1. CHECK YOUR BOLTS ON YOUR CHIPPER BEFORE EACH USE**
- 2. CHECK YOUR OSHA COMPLIANT SAFETY SHUT OFF BAR BEFORE EACH OPERATION**
- 3. USE 10W-30 2.4L FOR YOUR ENGINE OIL API SERVICE LEVEL SJ**
- 4. CHECK YOUR OIL LEVEL ON LEVEL GROUND, REINSERT THE DIP STICK WITHOUT SCREWING IT IN TO CHECK THE OIL LEVEL. CHANGE YOUR OIL AFTER FIRST 20 HOURS. THEN EVERY 250 HOURS THEREAFTER.**
- 5. USE ONLY BIGBEAR OEM PARTS. ONLY BIGBEAR HIGH PERFORMANCE TORNADIC BLADES FIT BIGBEAR CHIPPERS. CALL 725-274-6171 FOR PARTS IN LAS VEGAS, NV.**
- 6. USE HIGH GRADE GASOLINE IN THIS TWIN CYLINDER ENGINE**
- 7. REPLACE YOUR BLADES AND DRIVE BELTS ONCE PER YEAR**
- 8. ALL DRUM BEARINGS AND WHEEL BEARINGS ARE PREPACKED AT FACTORY, GREASE ONCE PER YEAR WITH AXEL AND BEARING GREASE.**
- 9. FOLLOW YOUR MAINTENANCE SCHEDULE IN THE ENGINE MANUAL AND KEEP RECORDS**
- 10. THE INTENDED USE OF THIS CHIPPER IS TO CHIP TREES ONLY.**
- 11. TOW YOUR MACHINE AT 45MPH MAX AND SLOW TO 20MPH FOR TURNING**
- 12. FOLLOW ALL THE SAFETY RULES RECOMMENDED BY OSHA AND THE SAFETY WARNINGS ON THIS EQUIPMENT.**
- 13. DO NOT MODIFY THIS EQUIPMENT IN ANY WAY**
- 14. KEEP THOSE AROUND YOU A SAFE DISTANCE WHEN RUNNING THIS MACHINE**
- 15. DO NOT OPERATE THIS CHIPPER UNDER THE INFLUENCE OF MEDS DRUGS OR ALCOHOL**
- 16. WEAR PROTECTIVE SAFETY HEAD GEAR, LONG PANTS, WORK BOOTS, GLOVES**



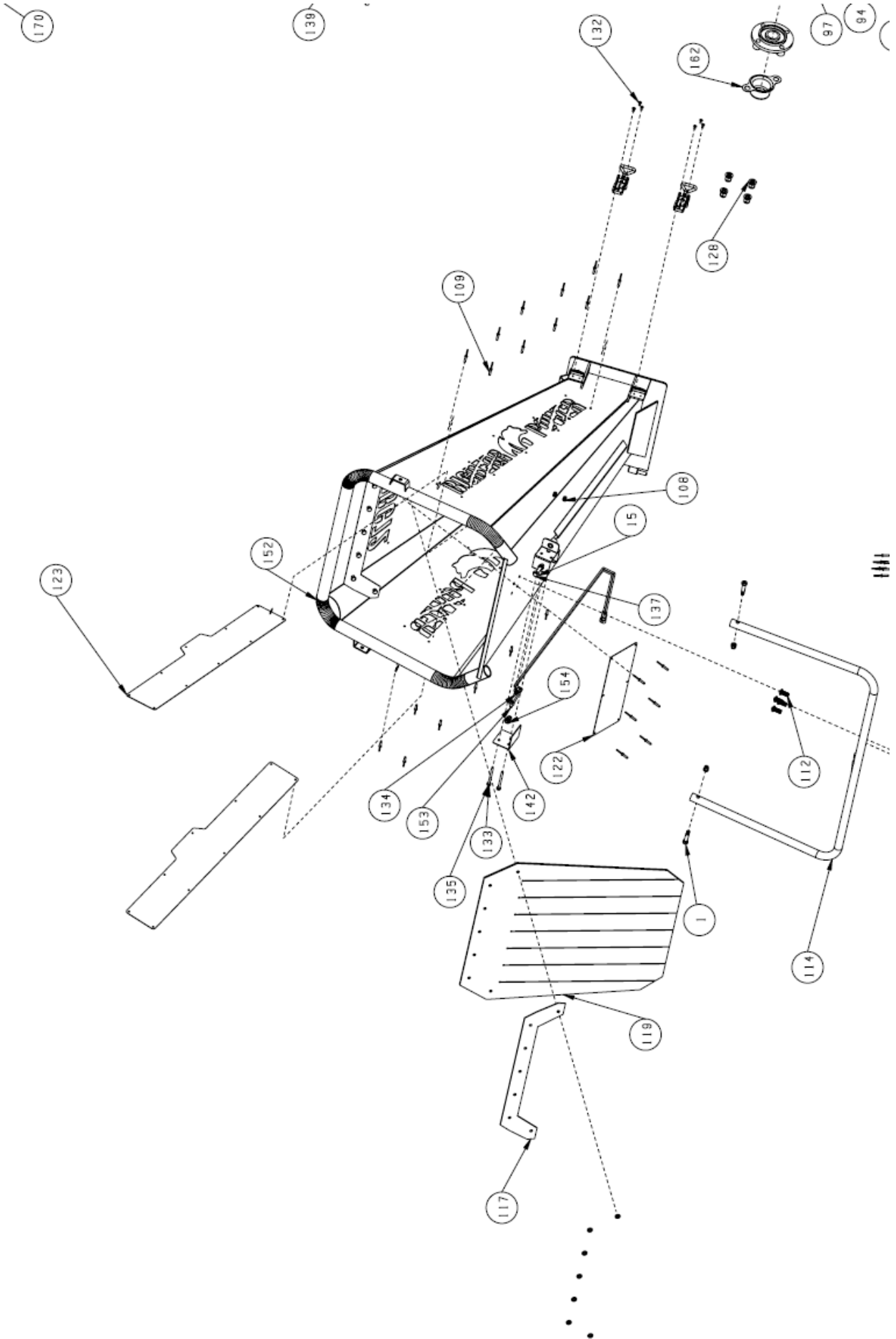
BBC72 PARTS DIAGRAM

1	Bolt M10*30		58	Pulley 36.5		115	Tank front securing plate
2	Upper discharge welded		59	Washer 8		116	Bolt M8*12
3	Plastic8		60	Belt B1219		117	Feed inlet rubber baffle strip
4	Middle discharge welded		61	Extension spring		118	Pin 8*45
5	8 spring		62	Bolt M8X25		119	Feed inlet rubber damper
6	Key 8*10*35		63	Roller Puelly		120	Key 9.5*9.5*85
7	Blade		64	Belt cover inner plate		121	Bolt M14*145
8	Quick bolt removal M8		65	Belt cover inner plate gasket		122	BBC plate
9	Lower discharge		66	Nut M12		123	logo plate
10	Bolt M8*245		67	Dust cap		124	Bolt M10*16
11	Nut M10x1.5		68	slotted nut		125	Bolt M10*30
12	Washer 16		69	Washer 26*45*3		126	Bolt M10*55
13	Front axle cover		70	Washer M14		127	Bolt M12*25
14	Spring 10		71	Tire16.5X6.5-8		128	Washer12
15	PLastic washer		72	Rear axle		129	Bolt M14*130
16	Spring 16		73	Bearing FC207		130	Bolt M4*12
17	Hinge		74	Drum shaft belt pulley side cover		131	Washer4
18	Front wheel main frame		75	Bolt M10X60		132	Bolt M5*12
19	Towing frame front frame		76	Lower coaming plate arc plate		133	Bolt M6*70
20	Elastic bolt		77	Mut		134	Lock nut M6
21	Spacer		78	Tire flange		135	Washer 6
22	Bolt M10*170		79	Bolt M14*155		136	Bolt M8*20
23	Bearing		80	Bolt M10X25		137	Bolt M8*30
24	Washer 10		81	Nut14		138	Engine R999
25	Bolt M10X80		82	Frame		139	Engine Key
26	Pin wire B		83	Bolt M10X30		140	Pin ring
27	Pin wire A		84	Limit block stop Angle plate		141	Discharge cylinder rubber cushioning pad
28	Pin		85	Spring14		142	Contact cover plate
29	Bolt M10X60		86	NutM8		143	Drum
30	B Pin		87	Battery box		144	Electric door lock fixed block
31	Tower bar		88	Battery12V20ah		145	Electric door lock lower fixing block
32	Front wheel bracket		89	Spring 12		146	Tool box cover
33	Bolt M5*15		90	Fender guard right		147	Tool box front plate
34	Chain		91	Fender guard left		148	Oil filter side tank support fixing block
35	Tower hitch		92	Bolt M8X70		149	Hour time
36	Buckle		93	Battery layer		150	Hour time fixation
37	Tire 4.1-4		94	lower blade		151	Relief valve
38	Bolt M16X140		95	Battery pressure rubber		152	Feed chute
39	Bolt M5X16		96	Tool cap		153	Feed barrel wiring
40	Fixing block on seat		97	Drum shaft pull start side cover		154	Insulated step mat
41	Bolt M16X160		98	Tool box		155	Engine pulley spacer
42	Block holder (reverse)		99	Buckle 4001		156	Extension nut
43	Front wheel outside spacer		100	Bolt M10*160		157	Plastic buckle
44	Spring retaining sleeve		101	Pressure spring 13 16 115		158	Cable tie
45	Bolt M8X40		102	Pin 2.3*25		159	Towing frame welded body
46	Stuck block		103	Emergency stop switch limit plate		160	Oil nozzle.
47	Card block fixing seat		104	Pin 2.9*36		161	Oil nozzle tank support fixing block
48	Nut M5		105	Quick clip drive arm		162	Bearing cover
49	D Pin		106	Buckle 4001		163	Bolt M10*40
50	Fixing block on seat		107	Spring 4		164	Lock nut16
51	Bolt M6X12		108	Spring 6		165	Guide cover welded body
52	Washer 16X40X3		109	Aluminum rivet 5		166	Bolt M8*16
53	Belt cover welding		110	Quick clip		167	Bolt M8*90
54	5/8-18*40UNF		111	D-pin 6		168	Fuel hose
55	Clutch outer sleeve		112	Bolt M8X25		169	EVBP hose
56	Outer cover word cover piece		113	Oil tank		170	Hoop
57	Washer 8*40*3		114	Emergency stop bar		171	Engine panel welding body

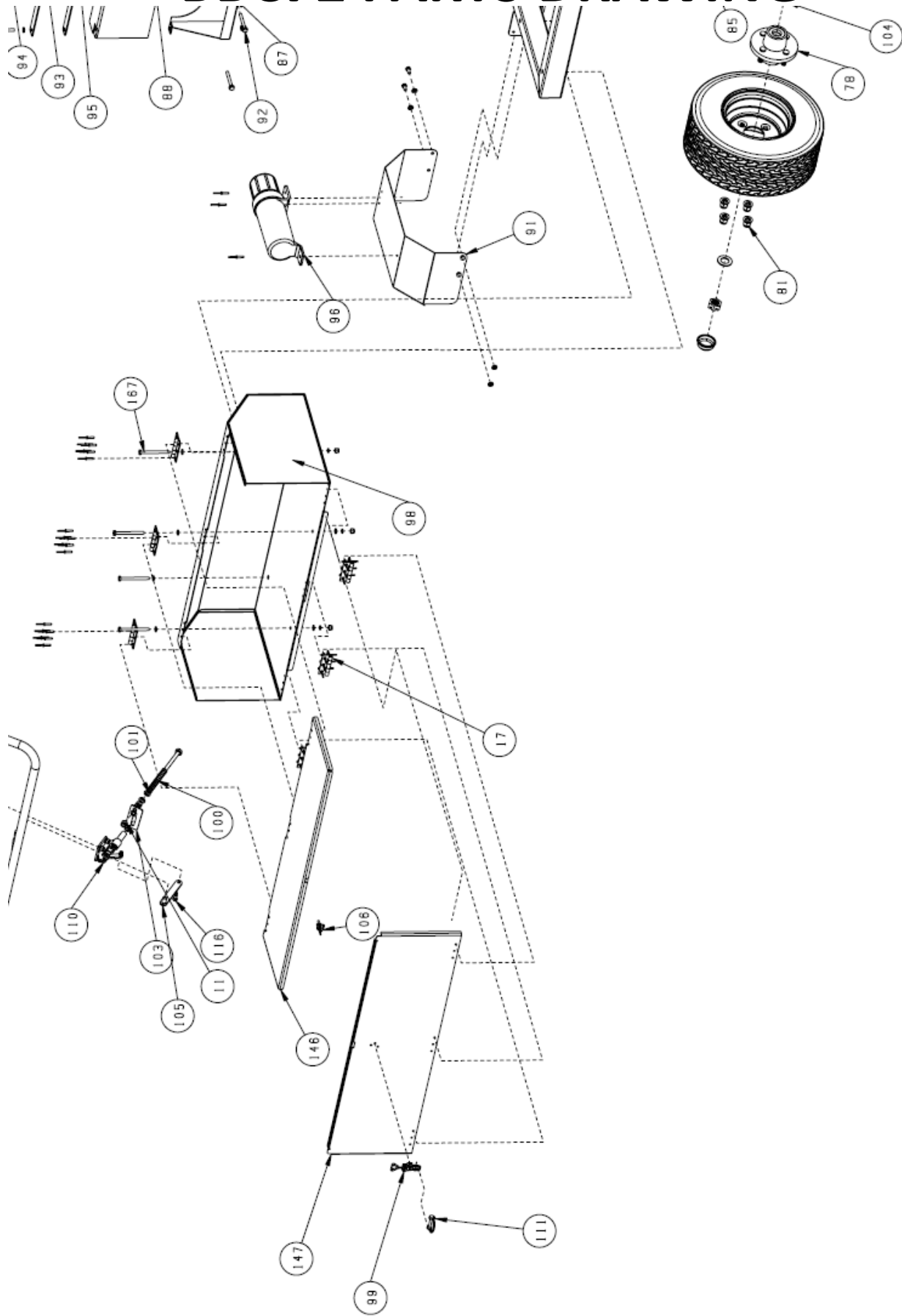
BBC72 PARTS DRAWING



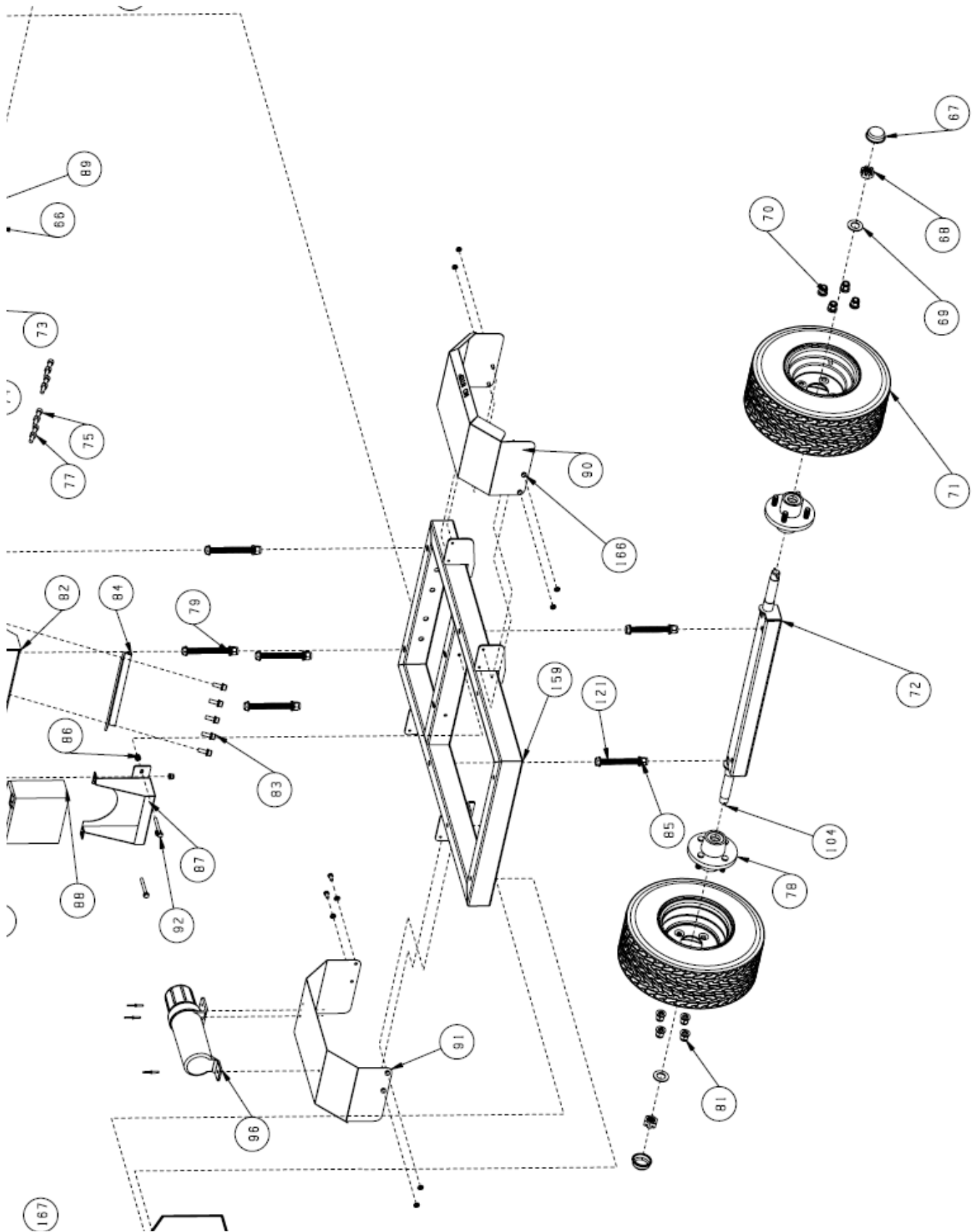
BBC72 PARTS DRAWING



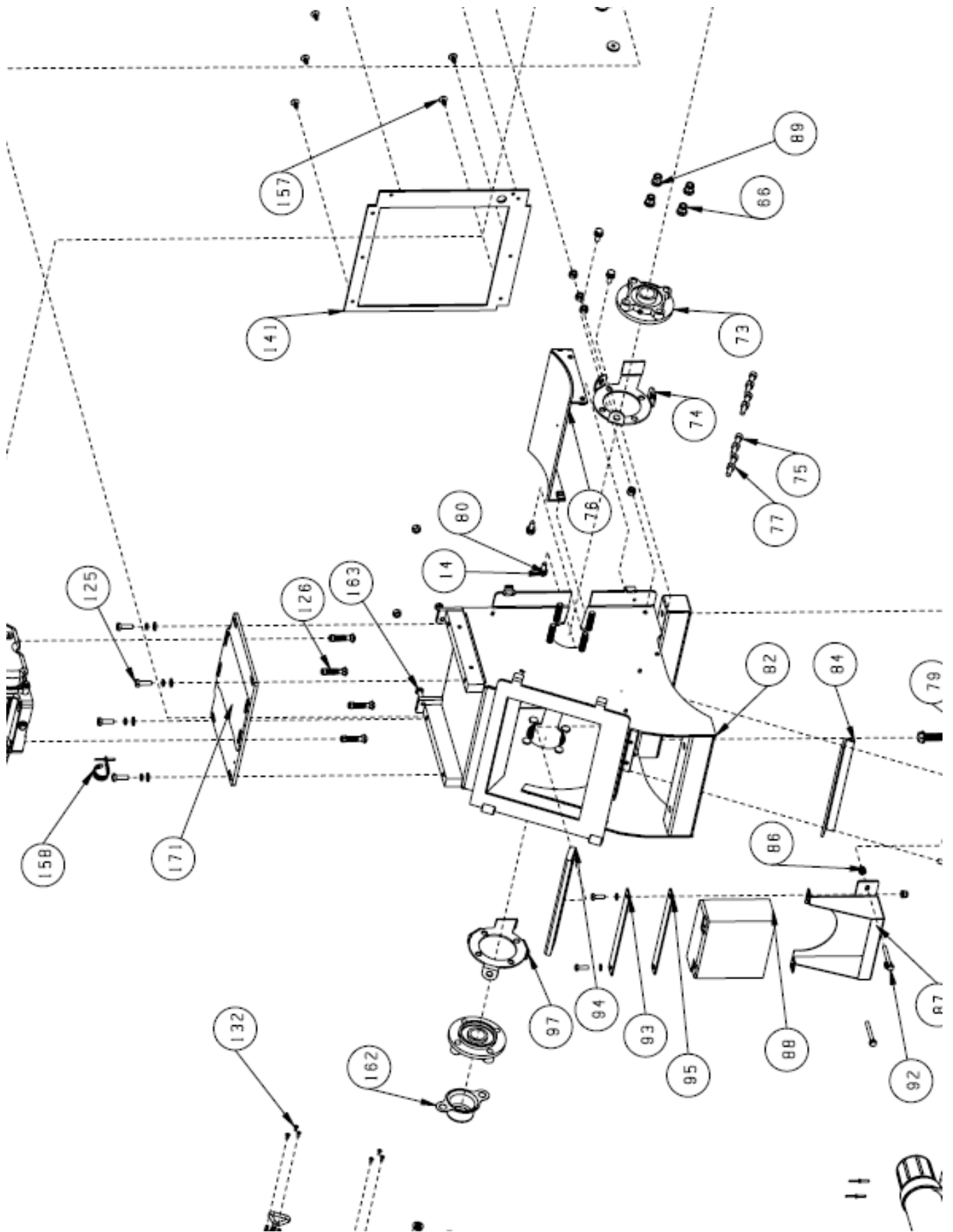
BBC72 PARTS DRAWING



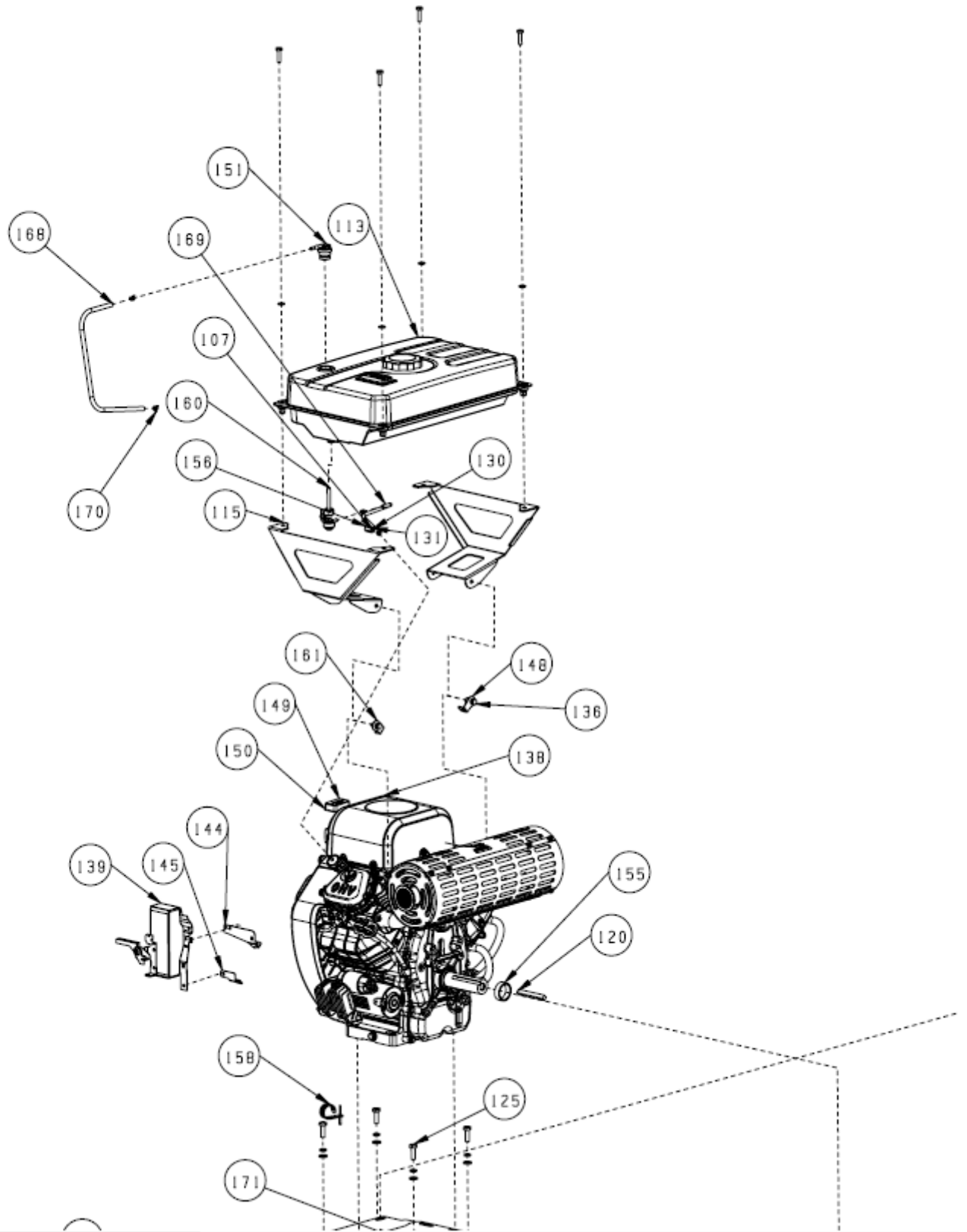
BBC72 PARTS DRAWING



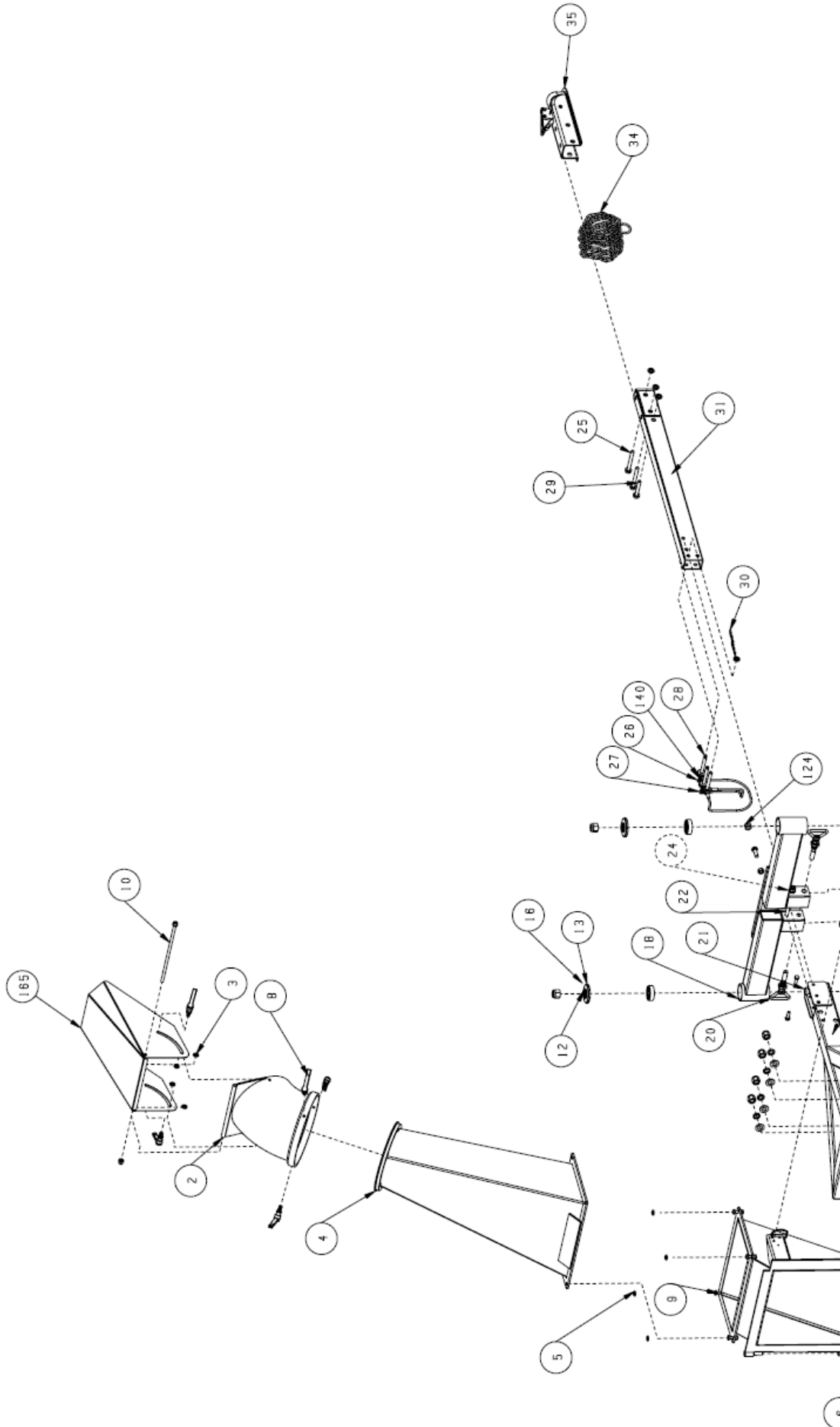
BBC72 PARTS DRAWING



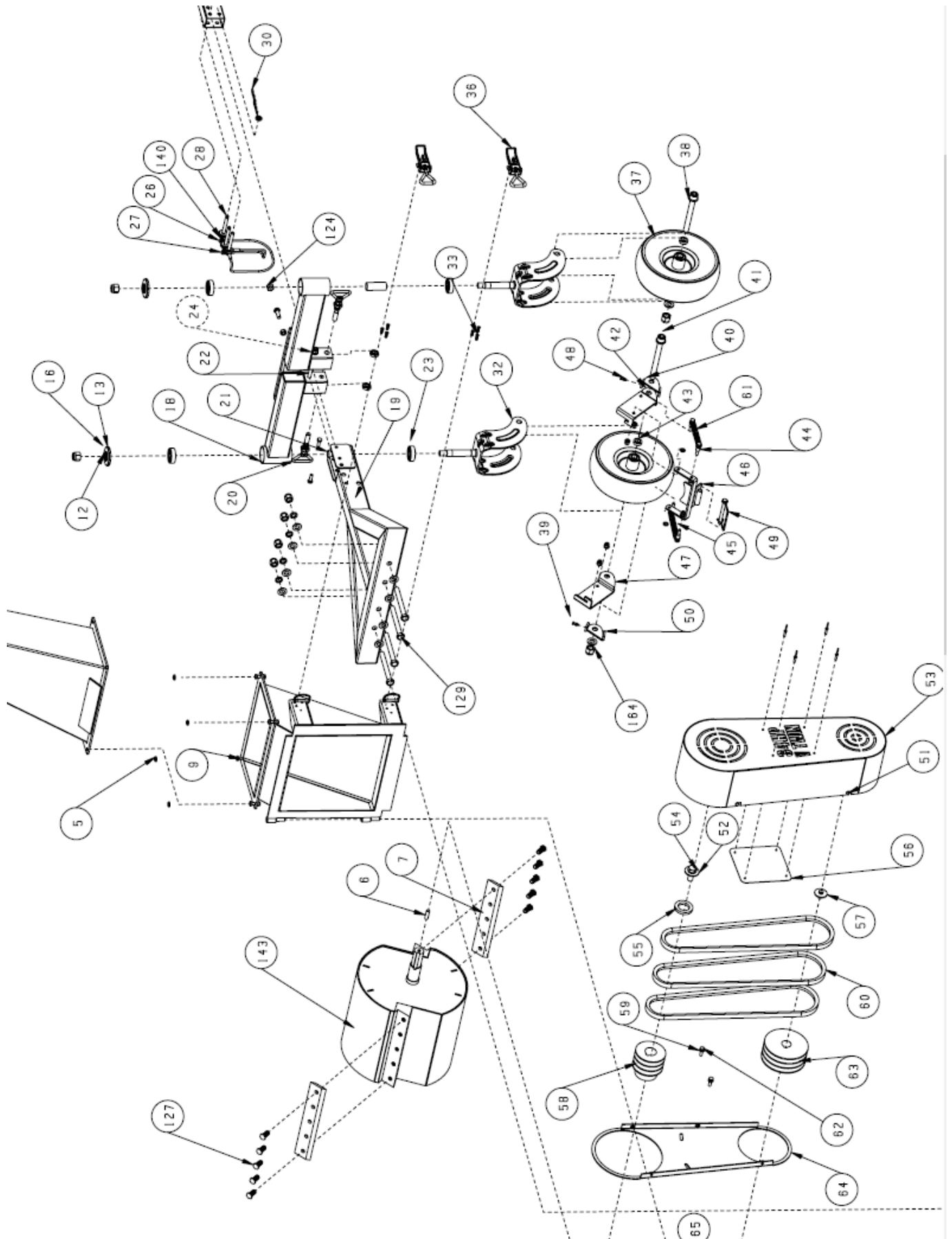
BBC72 PARTS DRAWING



BBC72 PARTS DRAWING



BBC72 PARTS DRAWING





BIG BEAR POWER

**GX COMMERCIAL LLC
4301 S VALLEY VIEW BLVD. STE 10 AND 11
LAS VEGAS, NV 89103**

EXTENDED 5YR LIMITED WARRANTY

- GX COMMERCIAL LLC WARRANTS THIS WOODCHIPPER FOR MANUFACTURES DEFECTS FOR 5 YEARS BOTH ENGINE AND CHASSIS AS FOLLOWS.
- GX COMMERCIAL LLC WILL PROVIDE PARTS AND LABOR WITHIN THE FIRST 30 DAYS AT NO COST TO THE ORIGINAL PURCHASER. GX COMMERCIAL LLC WILL REPAIR OR REPLACE AT OUR OPTION THE DEFECTIVE EQUIPMENT.
- AFTER 30 DAYS GX COMMERCIAL LLC WILL PROVIDE TO THE ORIGINAL PURCHASER FOR 5 YEARS REPLACEMENT PARTS FOR DEFECTIVE PARTS INCLUDING ENGINE AND ALL CHASSIS COMPONENTS.
- ITEMS NOT COVERED BY THIS WARRANTY AFTER 30 DAYS ARE REPAIR LABOR, BLADES, BELTS, TIRES, CUTTING BARS, NUTS AND BOLT HARDWARE AND BATTERIES.
- CUSTOMER ACCEPTED FREIGHT DAMAGE IS NOT COVERED BY WARRANTY.
- MINOR SCRATCH AND DENTS FROM SHIPPING IS NOT COVERED.
- RATO ENGINES ARE 1 YEAR WARRANTY, A 4 YEAR OEM COMMERCIAL EXTENDED WARRANTY IS INCLUDED AT NO EXTRA COST. GX COMMERCIAL LLC WILL REPAIR OR REPLACE RATO ENGINES AT OUR CHOICE FROM 5 YEARS FROM PURCHASE DATE. WARRANTY NOT TRANFERABLE.
- THIS EXTENDED WARRANTY APPLIES TO BOTH RESIDENTIAL AND COMMERCIAL USE OF THE EQUIPMENTS BASED ON PROPER MAINTENACE AND RECORDS OF PROVEN REGULAR SCHEDULED OIL CHANGES, FILTERS AND SPARK PLUG MAINTENACE. NON-INTENDED USE OR MISUSE OF EQUIPMENT IS NOT COVERED.
- DEFECTIVE EQUIPMENT UNDER WARRANTY IS REQUIRED TO BE REPAIRED BY A LICENCED MECHANIC. PARTS WILL BE SENT TO THE REPAIR SHOP OF THE CUSTOMERS CHOICE AT NO COST DURING THE WARRANTY PERIOD.