



BIG BEAR POWER

GX COMMERCIAL LLC

4301 S VALLEY VIEW BLVD. STE 10 AND 11

LAS VEGAS, NV 89103

BBC52 ASSEMBLY MANUAL



REVISED 6-23-2023

STEP 1

PRE-DEPLOYMENT

- 1. REMOVE THE TOP AND SIDES FROM THE CRATE**
- 2. LEAVE THE ENGINE TRANSMISSION ON THE PALLET**
- 3. WE RECOMMEND YOU ENLIST A HELPER TO ASSEMBLE THIS MACHINE**

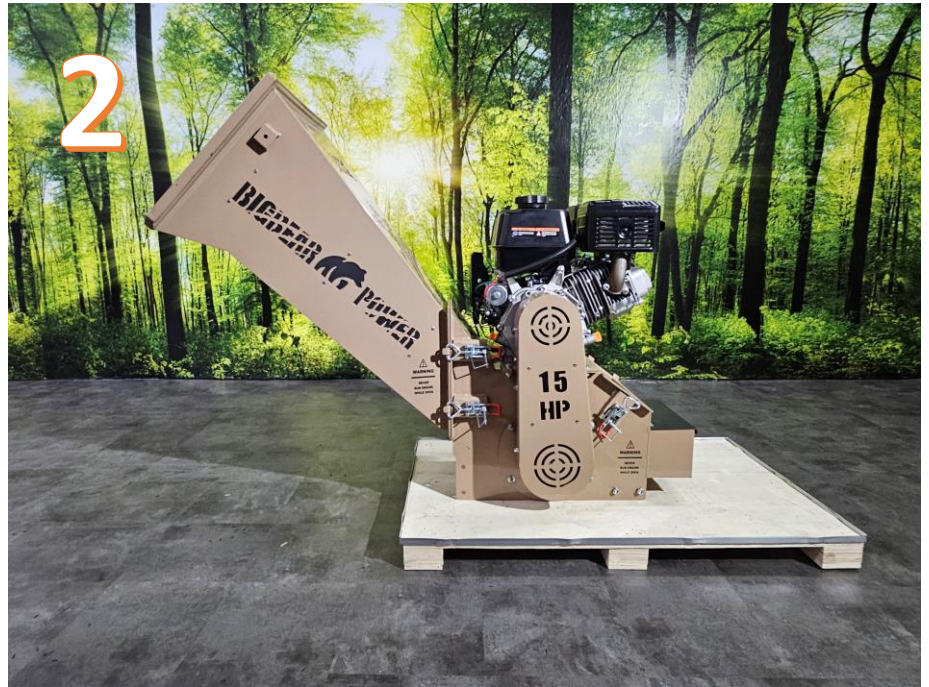


MISSING PARTS? CALL 725-274-6171 GX COMMERCIAL PARTS DEPT

STEP 2

INSTALL FEED CHUTE

1. MOUNT FEEDCHUTE ON PIN HINGES
2. BATTEN DOWN THE CHUTE WITH THE DUAL QUICK CLAMPS
 - TURN THE CLAMPS RINGS TO ADJUST THE TENSION IF REQUIRED



MISSING PARTS? CALL 725-274-6171 GX COMMERCIAL PARTS DEPT

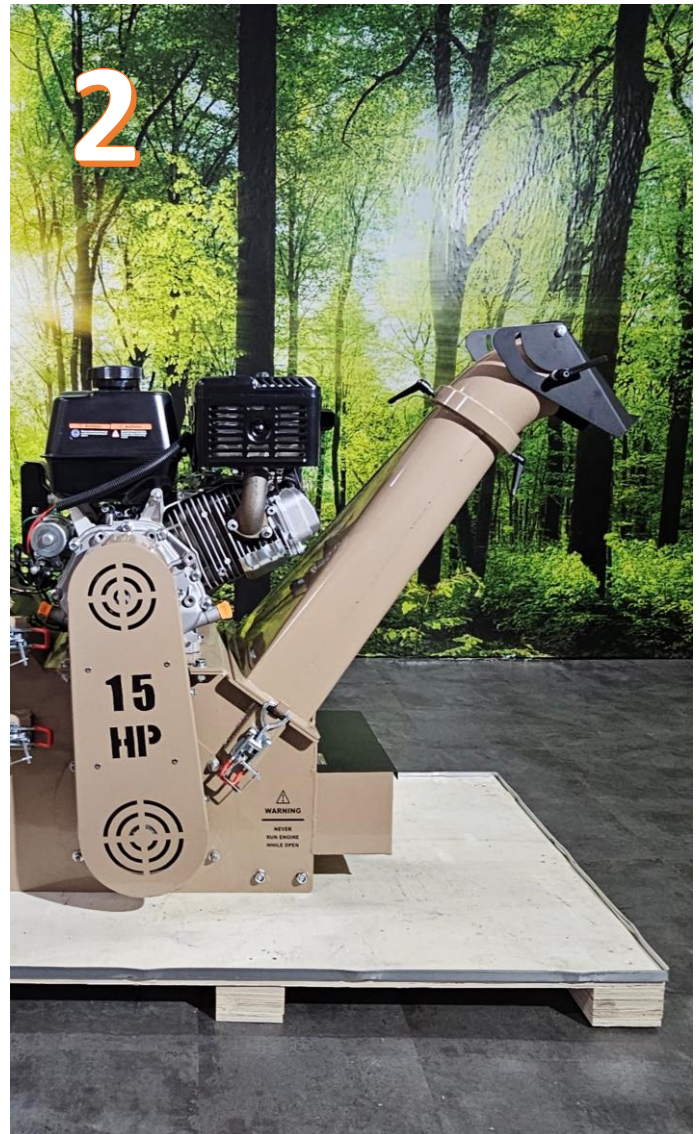
STEP 3

INSTALL CHIP CHUTE

1. **INSTALL THE CHIP HEAD – FACE FORWARD AND DOWN – TIGHTEN SECURE**
2. **INSTALL THE CHIP CHUTE ONTO THE HINGES, CLOSE AND LATCH**



ADJUST TO DOWN POSITION AND
TIGHTEN BEFORE THE NEXT STEP



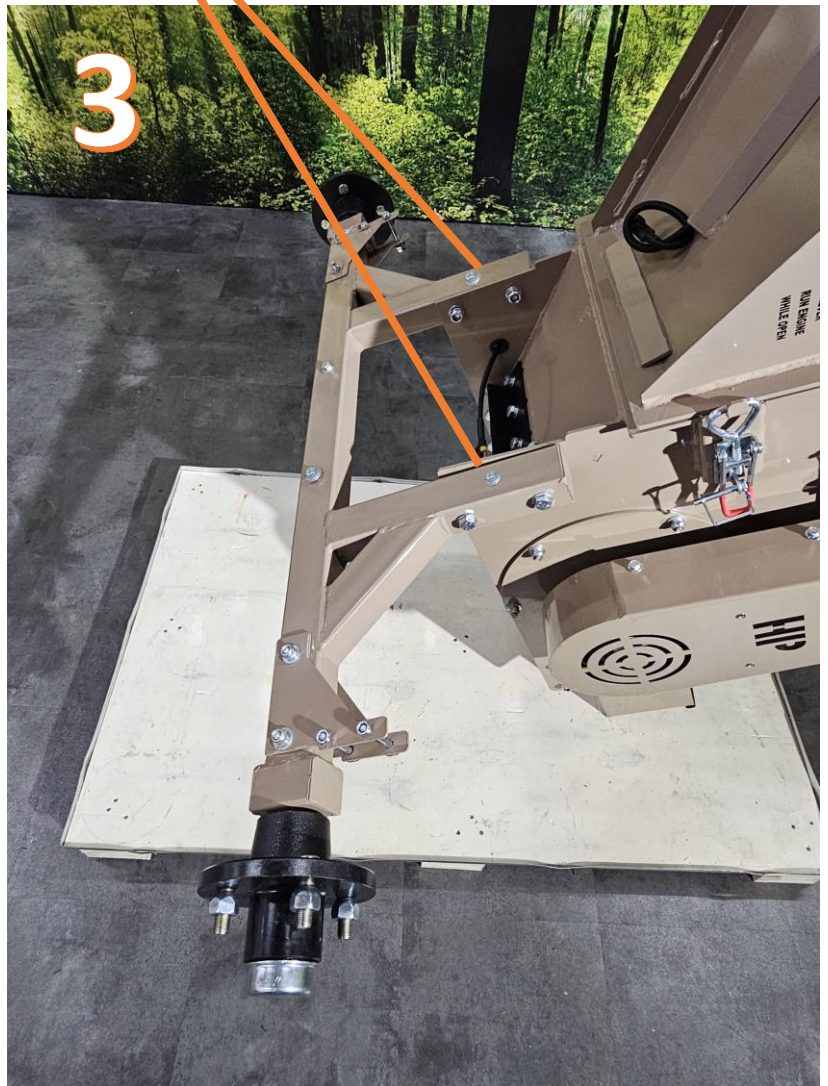
MISSING PARTS? CALL 725-274-6171 GX COMMERCIAL PARTS DEPT

STEP 4

AXLE INSTALLATION

1. **TURN CHIP DEFLECTOR DOWN AND TIGHTEN WITH TOOLESSE HANDLES**
2. **TIP CHIPPER FORWARD AS SHOWN RESTING ON CHIP SHIELD**
3. **MOUNT AXLE WITH 4 SETS OF BOLT HARDWARE.**
 - **IMPORTANT – MAKE SURE THE 2 BOLTS SHOWN ARE FACING UP**

INSTALL AXLE WITH THESE 2 BOLTS POSITIONED AS SHOWN



MISSING PARTS? CALL 725-274-6171 GX COMMERCIAL PARTS DEPT

STEP 5

WHEEL MOUNTING

1. MAKE SURE YOUR WHEEL NUT TAPERS ARE TOWARD THE RIM
2. MOUNT BOTH WHEELS
3. REPOSITION CHIPPER WHEELS ON THE GROUND
 - WE RECOMMEND YOU ENLIST A HELPER FOR THIS STEP

POSITION NUT TAPER TOWARD RIM



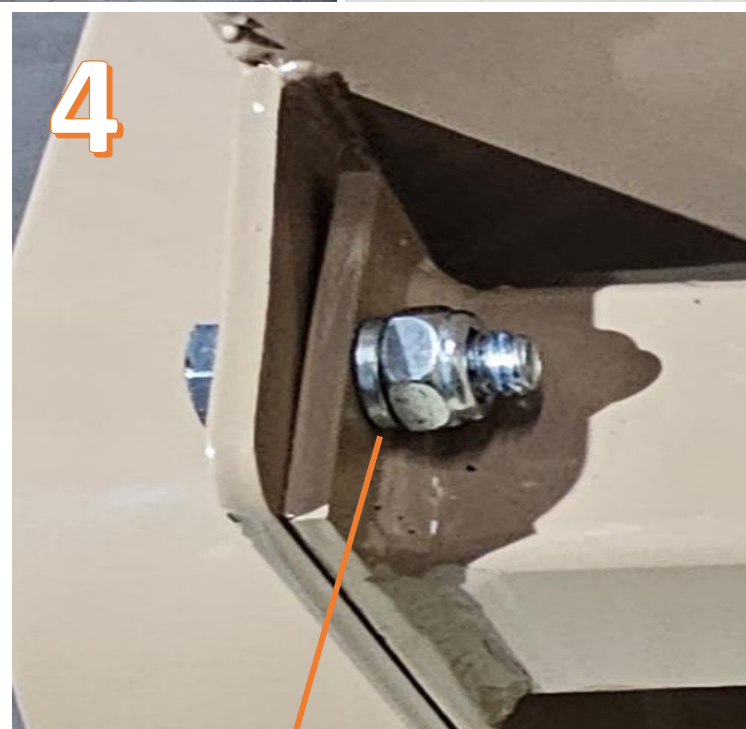
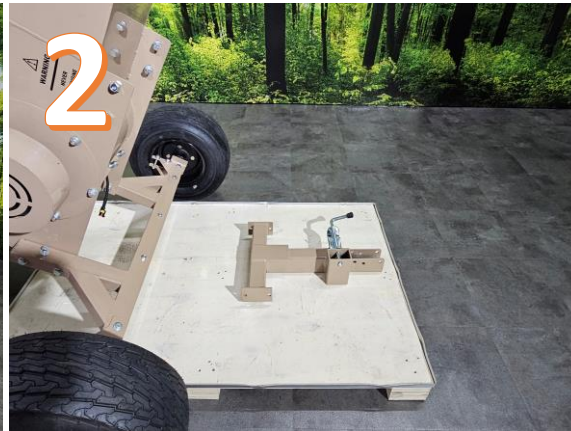
MISSING PARTS? CALL 725-274-6171 GX COMMERCIAL PARTS DEPT

STEP 6

TOW FRAME INSTALL

1. LAY THE CHIPPER BACK AS SHOWN
2. POSITION THE TOW FRAME AND REMOVE ALL HARDWARE
3. INSTALL TOW FRAME WITH OPEN CHANNEL FACING UP
4. TIGHTEN ALL FOUR BOLTS WITH LOCK WASHER AND LOCK NUTS AS SHOWN

IMPORTANT – INSTALL WITH OPEN CHANNEL UP



IMPORTANT – USE LOCK WASHER AND LOCK NUT AS SHOWN ON THE TOW FRAME

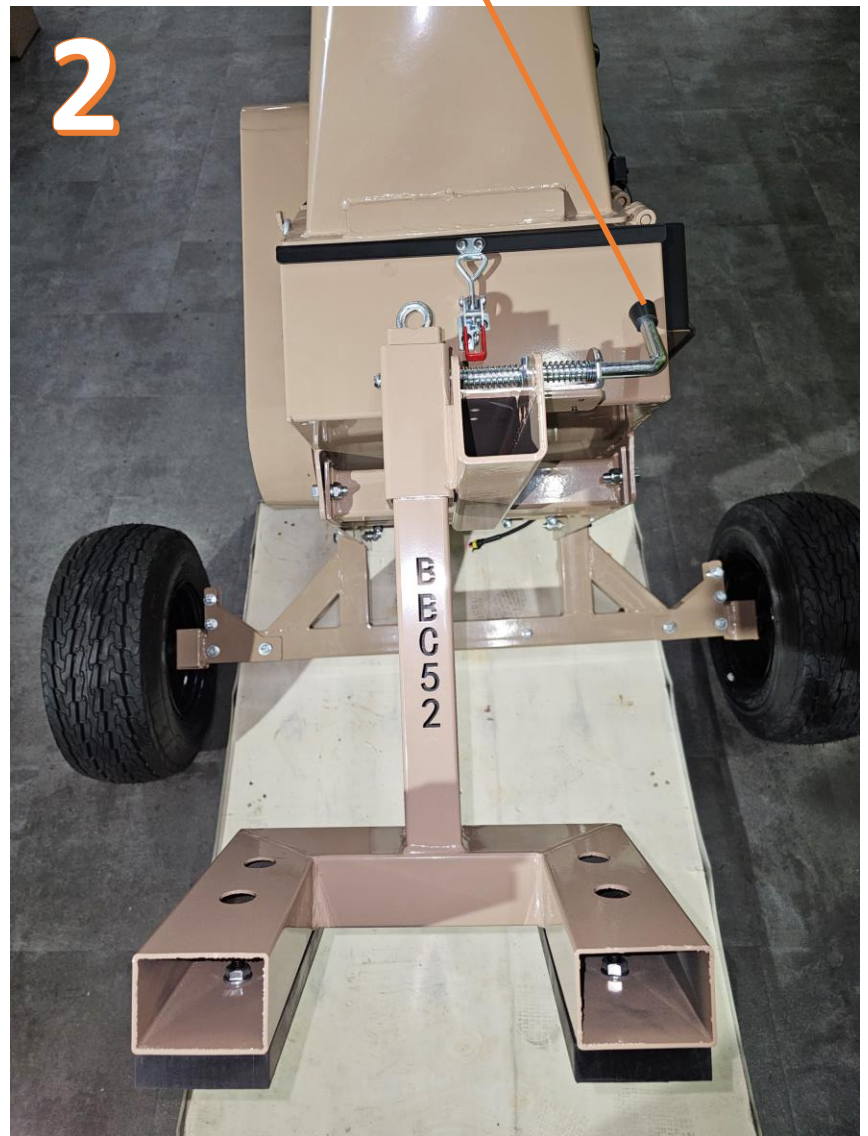
MISSING PARTS? CALL 725-274-6171 GX COMMERCIAL PARTS DEPT

STEP 7

DROP STAND INSTALL

1. POSITION THE DROP STAND FOR INSTALLATION
2. PULL QUICK SPRING LOCK TO OPEN AND SLIDE DROP STAND INTO PLACE
3. LOWER THE CHIPPER BACK TO HORIZONTAL

QUICK SPRING LOCKING LATCH

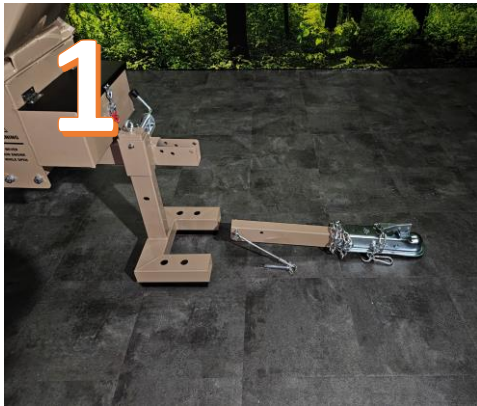


MISSING PARTS? CALL 725-274-6171 GX COMMERCIAL PARTS DEPT

STEP 8

FLIP N TOW – TOW BAR INSTALL

1. POSITION THE TOW BAR AND REMOVE ALL HARDWARE
2. INSTALL TOW BAR WITH THREADED BOLT IN REAR HOLE POSITION
3. INSTALL WIRE CABLE PIN INTO FRONT LOCKING HOLE
4. SECURE THE WIRE PIN WITH THE LOCKING SPRING PIN
5. FLIP UP FOR STORAGE OR TO ELIMINATE WORK SITE TRIP HAZARDS



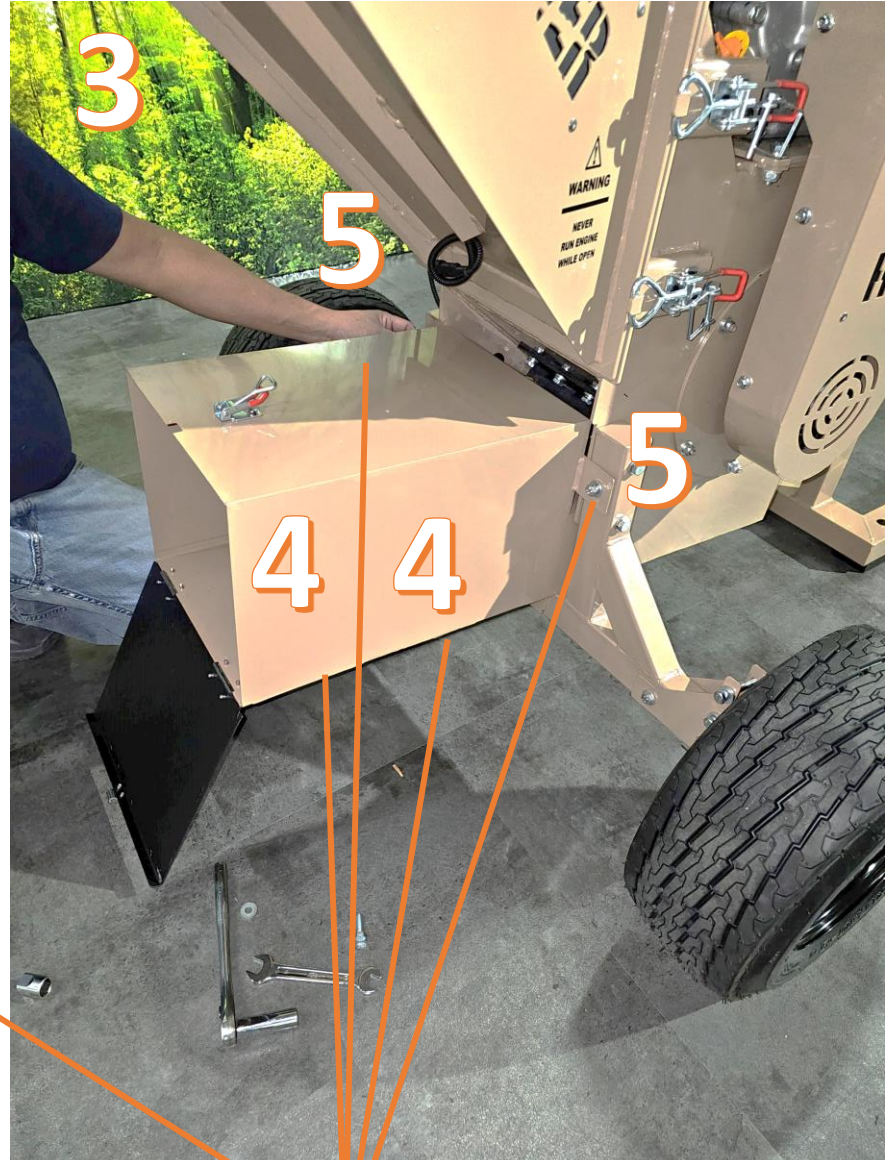
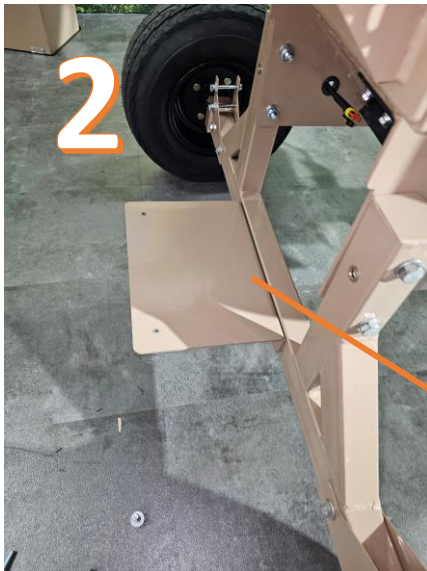
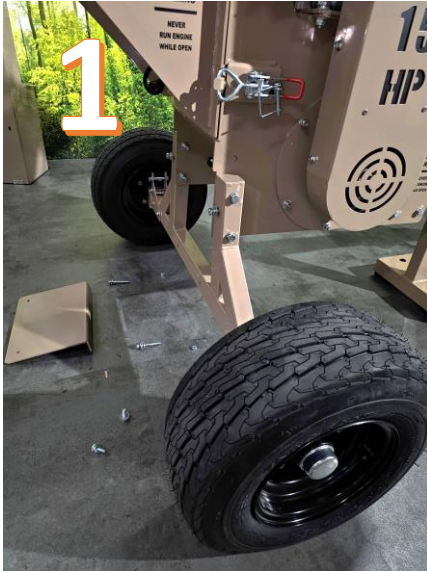
INSTALL SPRING LOCKING PIN – ENSURE IT IS SEATED

MISSING PARTS? CALL 725-274-6171 GX COMMERCIAL PARTS DEPT

STEP 9

CHAINSAW TOOLBOX MOUNTING

1. PREPARE ALL PARTS REMOVE ALL HARDWARE FROM TOOLBOX PARTS
2. MOUNT THE SUPPORT PLATE AS SHOWN KEEP HARDWARE LOOSE
3. INSTALL TOOLBOX SLIDE UNDER THE MAIN BODY
4. INSTALL 2 BOLTS INSIDE FLOOR OF TOOLBOX KEEP LOOSE
5. MOUNT TOOLBOX SIDES TO THE AXLE FRAME



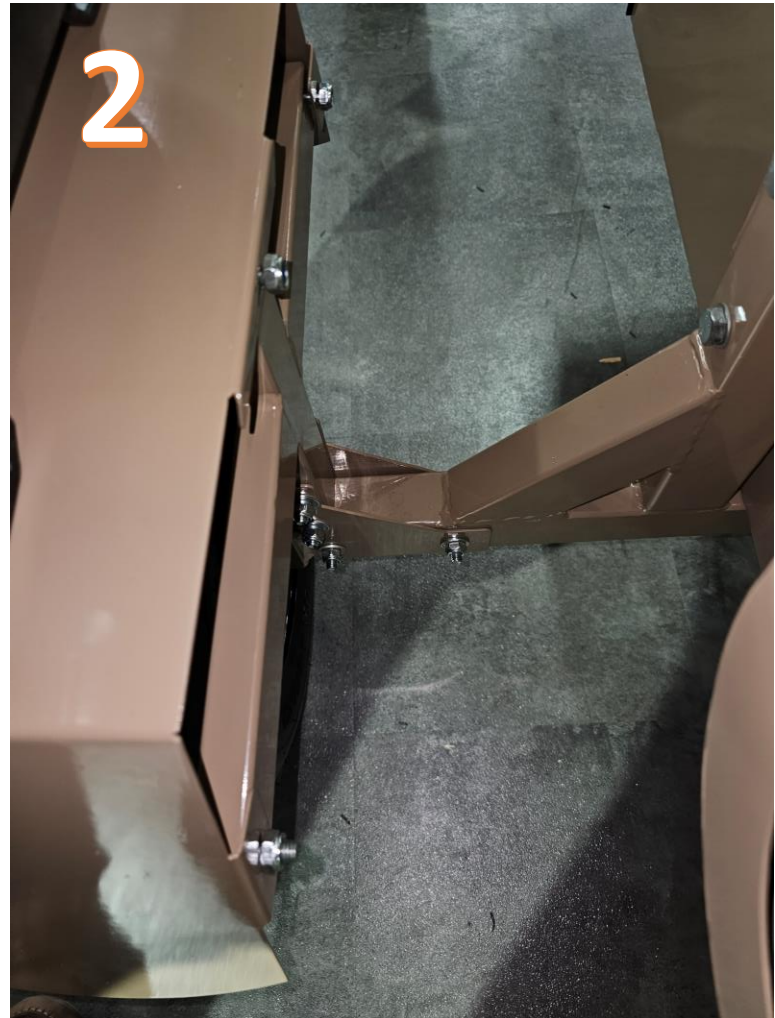
TIGHTEN ALL BOLTS AFTER ALL THE HARDWARE IS INSTALLED

MISSING PARTS? CALL 725-274-6171 GX COMMERCIAL PARTS DEPT

STEP 10

INSTALL CURBSIDE FENDER

1. **INSTALL THE FENDER WITH THE MANUAL TUBE ON THE CURBSIDE WHEEL**
 - **AN OPEN FEED CHUTE WILL HIT IF YOU INSTALL ON THE ROADSIDE**
2. **TIGHTEN ALL BOLTS SECURLY**



MISSING PARTS? CALL 725-274-6171 GX COMMERCIAL PARTS DEPT

STEP 11

INSTALL ROADSIDE FENDER

1. **INSTALL ROADSIDE FENDER WITH HARDWARE PROVIDED**
2. **TIGHTEN ALL BOLTS SECURELY**

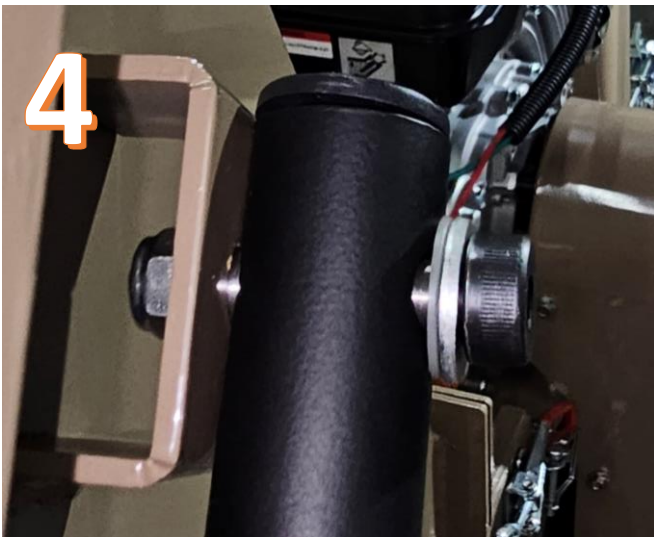
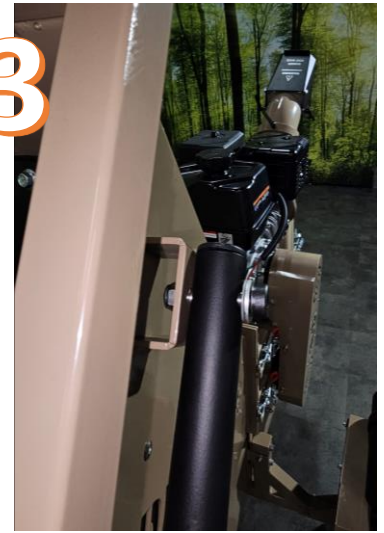
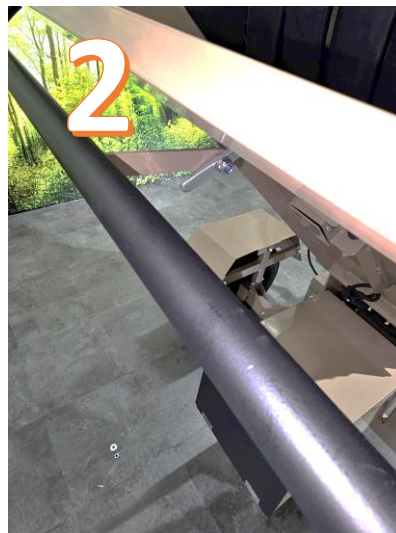


MISSING PARTS? CALL 725-274-6171 GX COMMERCIAL PARTS DEPT

STEP 12

INSTALL SAFETY SHUT OFF BAR

1. **ATTACH BAR TO SHUTOFF SWITCH WITH HEX SOCKET BOLT AS SHOWN**
 - **SAFETY BAR PUSHER MOUNTS ON LEFT SIDE OF SWITCH LEVER**
2. **TIGHTEN THIS BAR TO SWITCH BOLT SECURELY**
3. **INSTALL BAR TO SIDE OF CHUTE ON BOTH SIDES.**
4. **USE METAL FLAT, NYLON, NYLON, METAL FLAT, LOCK AND NUT IN ORDER**
5. **DOUBLE CHECK THE INSTALLATION OF THIS SAFETY BAR. IT WILL LOCK AND STAY LOCKED AFTER IT IS DEPRESSED. PULL UP TO UNLOCK.**



MISSING PARTS? CALL 725-274-6171 GX COMMERCIAL PARTS DEPT

STEP 13

INSTALL ELECTRICAL CONNECTIONS

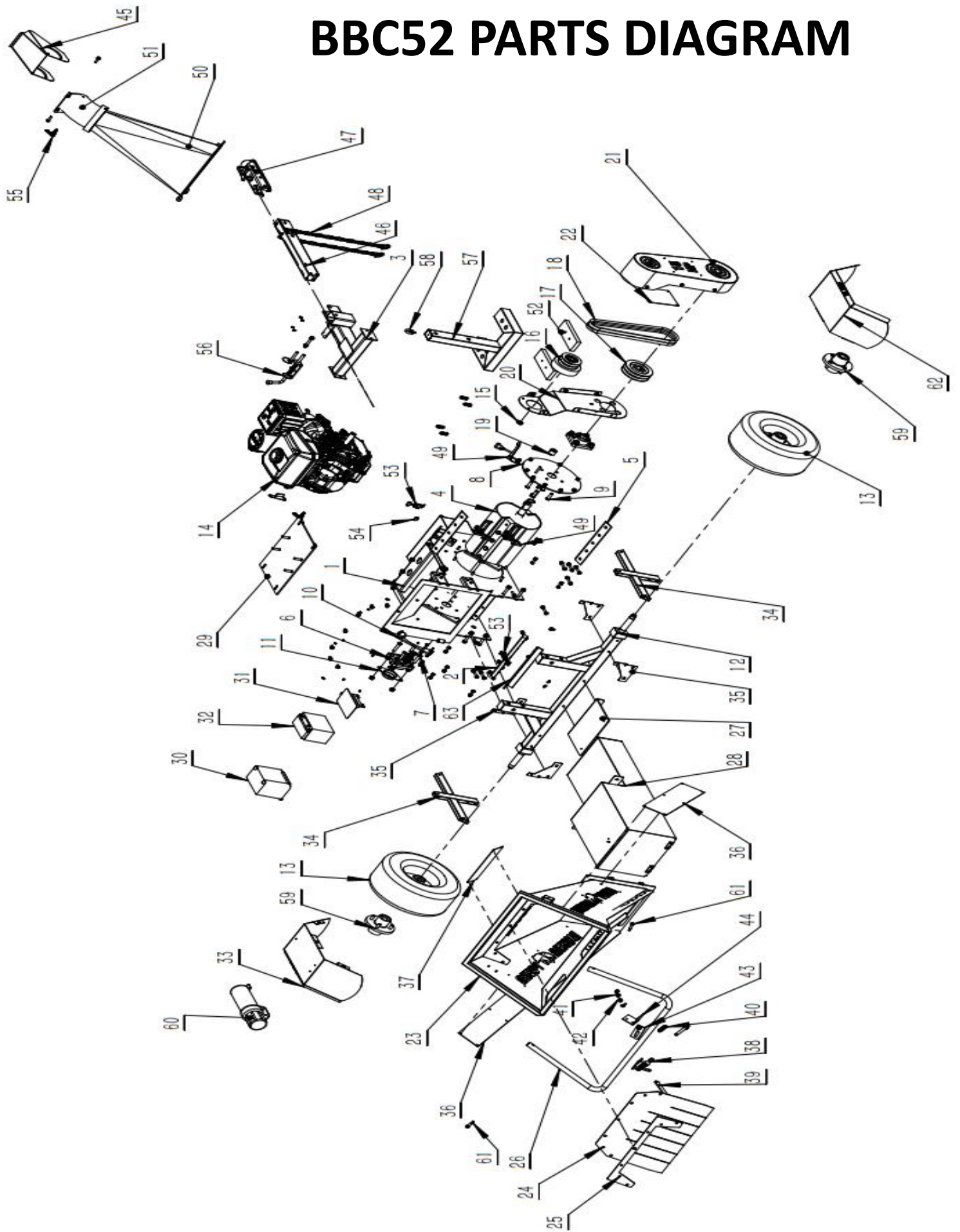
1. DURING THIS PROCEDURE REMOVE THE KEY FROM KEY START AND CLOSE AND LOCK ALL CHUTES. DISCONNECT THE SPARKPLUG WIRE.
2. CONNECT THE SAFETY BAR SHUT OFF UNTIL THE PLUGS LOCK TOGETHER
3. REMOVE LOCK SCREW FROM BATTERY CASE AND SLIDE CASE TO THE LEFT
4. CONNECT RED POSITIVE + AND GREEN GROUND -
5. BEND THE TERMINALS FLAT TO THE BATTERY SIDES
6. SLIDE THE CASE ONTO THE BATTERY, WITH WIRES IN CASE RACEWAYS
7. SECURE THE BATTERY AND THE CASE REPLACE THE LOCK SCREW
8. THE HOUR METER RUNS OFF THE SPARK PLUG WIRE. ONLY ONE WIRE CONNECTION IS REQUIRED, THE OTHER WIRE HAS NO CONNECTION.
9. CONNECT THE SPARKPLUG WIRE AND REINSERT YOUR ENGINE KEY



BBC52 PARTS LIST

BBC52- PART NUMBER	Description	Quantity	BBC52- PART NUMBER	Description	Quantity
1	Frame	1	33	Tire fender	2
2	Limited block	1	34	Fender holder	2
3	Trailer frame	1	35	Triangular fixer	4
4	Drum	1	36	In-Feed LOGO liner	2
5	Blade HD 5MM TOOLSTEEL	2	37	Logo liner	1
6	Bearing seat	2	38	switch	1
7	BoltM12X55	3	39	Rotating plate	1
8	Drum cover	1	40	Spring	1
9	BoltM12X40	5	41	Insulation pad	1
10	Drum seal block	2	42	Insulating nylon pad	1
11	Bearing cover	1	43	Emergency stop switch limit plate	1
12	Axle frame welding	1	44	Contact cover plate	1
13	Tire	2	45	Guide cap	1
14	Engine	1	46	Front foot	1
15	Engine spacer	1	47	Tower hitch	1
16	Clutch	1	47	Trailer pipe front welds	1
17	Drum pulley	1	48	Chain	2
18	Belt B1067	2	49	buckle	3
19	Belt cover big washer	1	50	discharge chute	1
20	Belt cover inner	1	51	discharge chute top	1
21	Belt cover	1	52	rubber foot	2
22	Inner panel	1	53	small buckle	2
23	Inner panel	1	54	small buckle seat	2
24	Baffle rubber	1	55	Quick release bolt	2
25	Rubber layer	1	56	spring pin	1
26	Emergency stop bar	1	57	52 front feet	1
27	Toolbox support	1	58	0 bolts	1
28	Toolbox	1	59	4-hole flange	2
29	Engine fixation	1	60	toolbox	1
30	Battery box	1	61	Bolts	2
31	Battery box frame	1	62	fender right	1
32	Battery	1	63	Limited block	1

BBC52 PARTS DIAGRAM



FINISH LINE

CONGRATULATIONS ON A GREAT JOB ASSEMBLING !

- 1. CHECK THE BOLTS ON YOUR CHIPPER BEFORE EACH USE**
- 2. CHECK YOUR OSHA COMPLIANT SAFETY SHUT-OFF BAR BEFORE EACH OPERATION**
- 3. USE 10W-30 1.1L FOR YOUR ENGINE OIL API SERVICE LEVEL SJ**
- 4. CHECK YOUR OIL LEVEL ON LEVEL GROUND; REINSERT THE DIPSTICK WITHOUT SCREWING IT IN TO CHECK THE OIL LEVEL. CHANGE YOUR OIL AFTER THE FIRST 20 HOURS. THEN, EVERY 250 HOURS THEREAFTER.**
- 5. USE ONLY BIGBEAR OEM PARTS. ONLY BIGBEAR HIGH-PERFORMANCE TORNADIC BLADES FIT BIGBEAR CHIPPERS. CALL 725-274-6171 FOR PARTS IN LAS VEGAS, NV.**
- 6. USE HIGH-GRADE GASOLINE IN THIS ENGINE**
- 7. REPLACE YOUR BLADES AND DRIVE BELTS ONCE PER YEAR**
- 8. ALL DRUM BEARINGS AND WHEEL BEARINGS ARE PREPACKED AT FACTORY, GREASE ONCE PER YEAR WITH AXEL AND BEARING GREASE.**
- 9. FOLLOW YOUR MAINTENANCE SCHEDULE IN THE ENGINE MANUAL AND KEEP RECORDS**
- 10. THE INTENDED USE OF THIS CHIPPER IS TO CHIP TREES GRASS AND LEAVES ONLY.**
- 11. TOW YOUR MACHINE AT 45MPH MAX AND SLOW TO 15MPH FOR TURNING**
- 12. FOLLOW ALL THE SAFETY RULES RECOMMENDED BY OSHA AND THE SAFETY WARNINGS ON THIS EQUIPMENT.**
- 13. DO NOT MODIFY THIS EQUIPMENT IN ANY WAY**
- 14. KEEP THOSE AROUND YOU A SAFE DISTANCE WHEN RUNNING THIS MACHINE**
- 15. DO NOT OPERATE THIS CHIPPER UNDER THE INFLUENCE OF MEDS DRUGS OR ALCOHOL**
- 16. WEAR PROTECTIVE SAFETY HEADGEAR, LONG PANTS, WORK BOOTS, GLOVES**



REVISED 6-23-2024



BIG BEAR POWER

GX COMMERCIAL LLC

4301 S VALLEY VIEW BLVD. STE 10 AND 11

LAS VEGAS, NV 89103

EXTENDED 5YR LIMITED WARRANTY

- GX COMMERCIAL LLC WARRANTS THIS WOODCHIPPER FOR MANUFACTURES DEFECTS FOR 5 YEARS BOTH ENGINE AND CHASSIS AS FOLLOWS.
- GX COMMERCIAL LLC WILL PROVIDE PARTS AND LABOR WITHIN THE FIRST 30 DAYS AT NO COST TO THE ORIGINAL PURCHASER. GX COMMERCIAL LLC WILL REPAIR OR REPLACE AT OUR OPTION THE DEFECTIVE EQUIPMENT.
- AFTER 30 DAYS GX COMMERCIAL LLC WILL PROVIDE TO THE ORIGINAL PURCHASER FOR 5 YEARS REPLACEMENT PARTS FOR DEFECTIVE PARTS INCLUDING ENGINE AND ALL CHASSIS COMPONENTS.
- ITEMS NOT COVERED BY THIS WARRANTY AFTER 30 DAYS ARE REPAIR LABOR, BLADES, BELTS, TIRES, CUTTING BARS, NUTS AND BOLT HARDWARE AND BATTERIES.
- CUSTOMER ACCEPTED FREIGHT DAMAGE IS NOT COVERED BY WARRANTY.
- MINOR SCRATCH AND DENTS FROM SHIPPING IS NOT COVERED.
- RATO ENGINES ARE 1 YEAR WARRANTY, A 4 YEAR OEM COMMERCIAL EXTENDED WARRANTY IS INCLUDED AT NO EXTRA COST. GX COMMERCIAL LLC WILL REPAIR OR REPLACE RATO ENGINES AT OUR CHOICE FROM 5 YEARS FROM PURCHASE DATE. WARRANTY NOT TRANFERABLE.
- THIS EXTENDED WARRANTY APPLIES TO BOTH RESIDENTIAL AND COMMERCIAL USE OF THE EQUIPMENTS BASED ON PROPER MAINTENACE AND RECORDS OF PROVEN REGULAR SCHEDULED OIL CHANGES, FILTERS AND SPARK PLUG MAINTENACE. NON-INTENDED USE OR MISUSE OF EQUIPMENT IS NOT COVERED.
- DEFECTIVE EQUIPMENT UNDER WARRANTY IS REQUIRED TO BE REPAIRED BY A LICENCED MECHANIC. PARTS WILL BE SENT TO THE REPAIR SHOP OF THE CUSTOMERS CHOICE AT NO COST DURING THE WARRANTY PERIOD.