

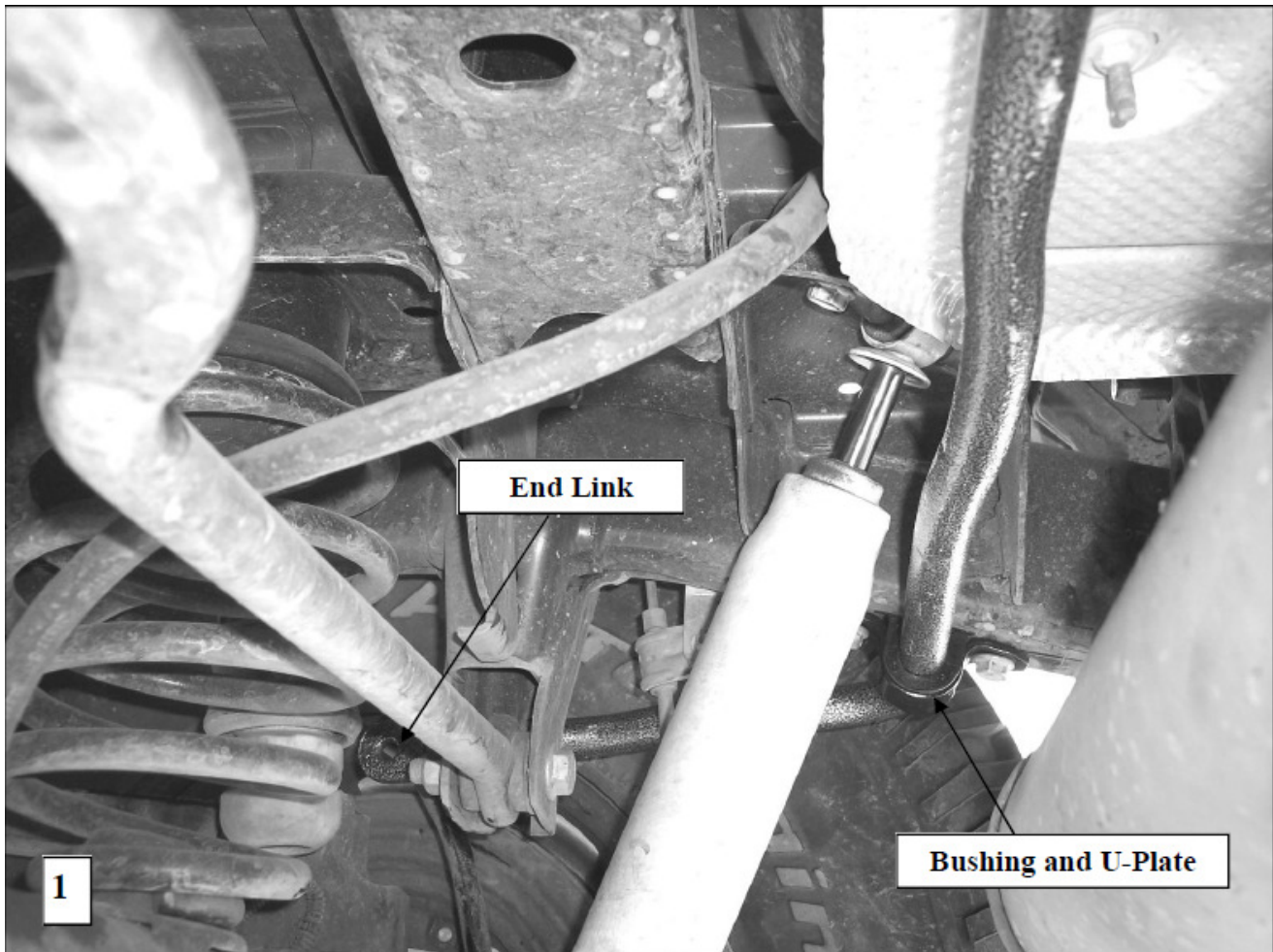
# Hellwig PRODUCTS.com

559-734-7451 800-367-5480 FAX 559-734-7460

## INSTALLATION INSTRUCTIONS REAR STABILIZER BAR

Thank you for purchasing a quality Hellwig Product.

PLEASE READ THIS INSTRUCTION SHEET COMPLETELY BEFORE STARTING  
YOUR INSTALLATION



# Hellwig PRODUCTS.com

559-734-7451 800-367-5480 FAX 559-734-7460

**SAFETY: BEFORE STARTING YOUR INSTALLATION, BE SURE TO SET PARKING BRAKE AND CHOCK TIRES.**

**NOTE: TO EASE INSTALLATION AND TO PROPERLY ADJUST THE SWAY BAR, THE WEIGHT OF THE VEHICLE MUST BE ON THE SUSPENSION AS IF DRIVING DOWN THE ROAD. DO NOT RAISE THE VEHICLE BY THE FRAME.**

1. Remove the factory installed anti sway bar by unbolting the bar from the end links at the bar and removing the U-plates from the vehicle. Leave the end links attached to the frame and keep all the factory hardware since some of it will be reused.
2. Lubricate the insides of the D-shaped bushings included in the kit and place them on the Hellwig bar in the stock locations.
3. Bolt the factory end links to the end of the bar using the factory hardware removed in Step 1.
4. Swing the bar up and attach the bar in the stock location using the Hellwig U-plates and factory hardware.
5. Make sure the bar is centered and then Torque frame bolts to 20-25 ft-lb and end link bolts to 35 ft-lb.
6. Check your installation, check for clearance on all undercarriage components; wiring, exhaust, springs, fuel and brake lines. Take the vehicle on a test drive and then recheck installation and periodically thereafter.

**ATTENTION INSTALLER: BE SURE THAT THE CUSTOMER RECEIVES THIS INSTRUCTION SHEET, ALL IMPORTANT NOTE CARDS AND THE WARRANTY FORM**