

11.5ft Reactor Propeller Pedal Kayak Assembly Booklet

Congratulations on buying your Reel Yaks pedal kayak!! Note we also have assembly videos on our website at Reelyaks.com. If you have any questions on your Reel Yaks kayak assembly, then please email us at info@reelyaks.com or call us on 855 202 5035.

There are **five key** pieces of assembly to be done:

- Pedal drive
- Rudder
- Stadium seat
- Paddle
- Fishing rod holder

First step is to unpack your kayak which should come with an outer sheet plastic, cardboard layer and bubble plastic inner layer. Please ensure to dispose of these materials safely in particular the plastic.



Each package will have:

- 1 X kayak
- 1 X rudder
- 1 x rudder security (cotter) pin
- 1 X paddle
- 1 x pedal propeller drive unit
- 1 x pedals (2)
- 1 x spare propeller
- 1 x stadium chair
- 2 x rear seat brackets
- 2 x rear stadium chair screws (front brackets have the screws with handles attached)
- 1 x fishing rod holder
- 1 x fishing rod rail support
- 2 x fishing rod rail support screws

The larger items will be secured in the main cockpit area: pedal drive unit, pedal drive pedals, spare propeller, paddle and stadium chair.

The smaller items will be in the forward cockpit hatch: rudder support, rudder screws, stadium chair screws, fishing rod holder, fishing rod support, fishing rod support screws and allen wrench.

RY REEL YAKS

- 1 x fishing rod holder support screws
- 1 x handle support screws
- 2 x rear seat brackets



Propeller Drive Assembly

For the pedal drive assembly ensure that you have the main unit with propeller (x1) attached and the pedals (x2).



2 x foot strap

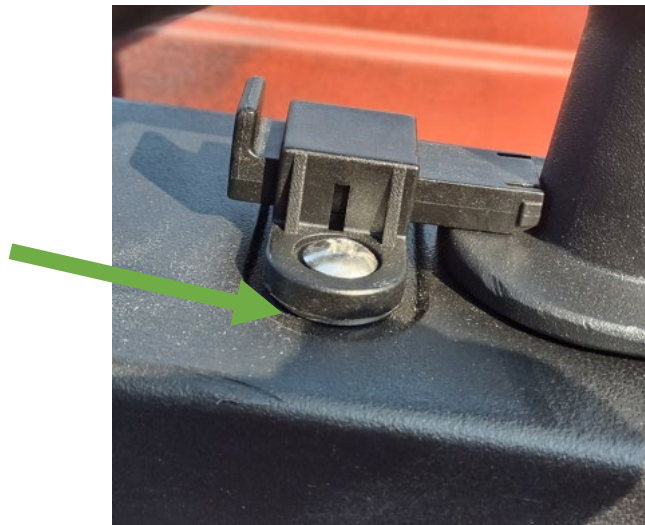


2 x screw
2 x Tool
2 x caps



RY REEL YAKS

Screw the pedals onto each side of the unit and extend the forward brace bar (orange arrow). Then screw the lock plate behind the hatch with the 4 screws provided and lock the propeller drive in place (green arrow).



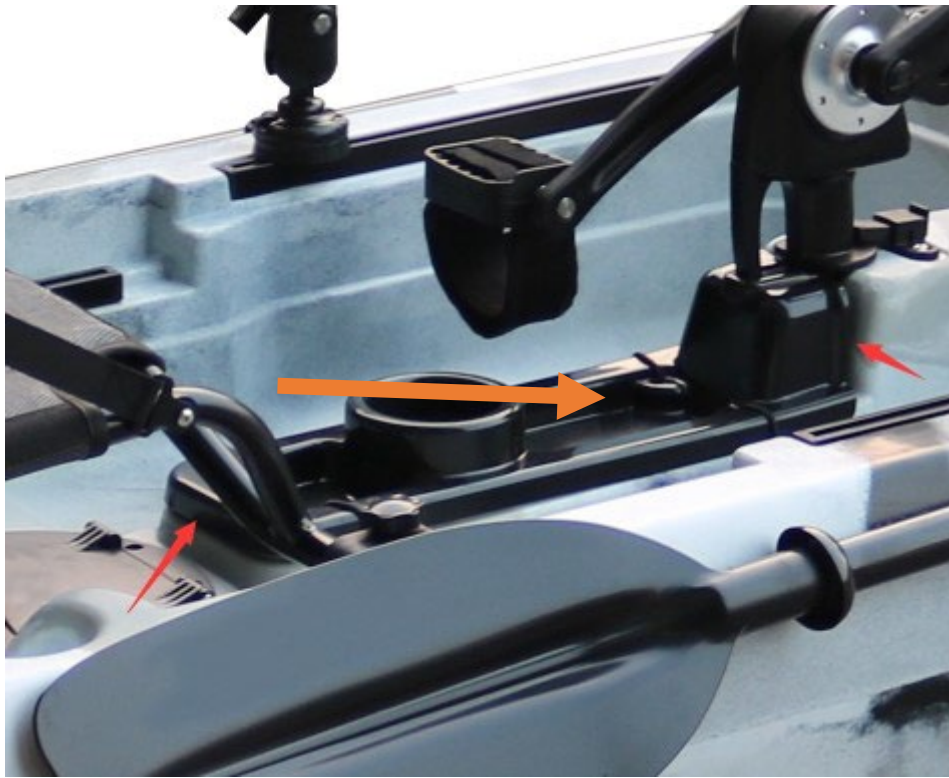
Note there is a shim under the propeller drive lock. If you find there is some side to side shift when pedalling you can remove the shim (Green Arrow) underneath to provide a tighter fit.

RY REEL YAKS

In some cases, the fin above the propeller may be disassembled for transport. Installation is very simple, it's a single screw (located where the **Yellow Arrow** is), the screw is in the propeller drive package.



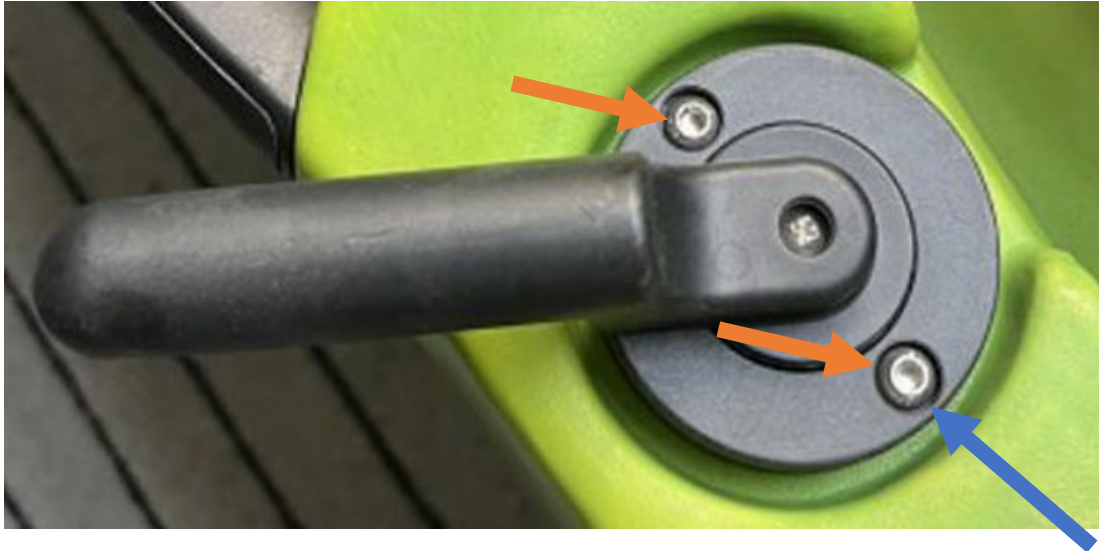
After you have installed the pedal drive, next is to secure the cup holder and pedal drive pod cover. This should be inserted pushing the front down (**Orange Arrow**) towards the pedal drive and forward firmly. This may require some force to have it fit snugly to provide an optimal seal around the pedal drive, once in place clip the bungy cables on each side over.



RY REEL YAKS

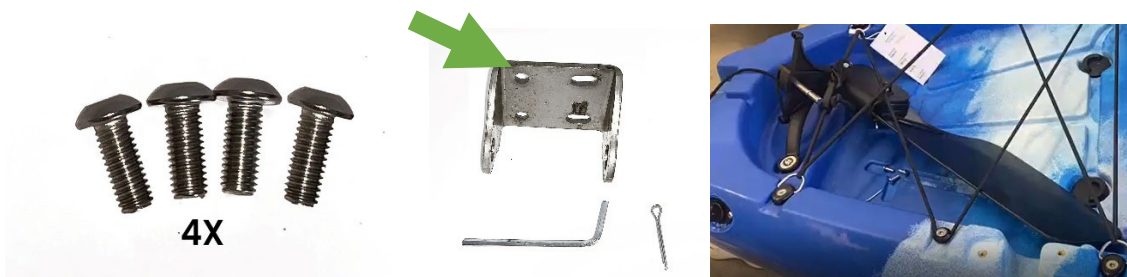
Rudder Assembly

In some case the rudder handle may be in the front compartment. Use the two supplied screws to secure it (**orange arrows**). Ensure when you've completed securing the handle that you have left it in the neutral position, with the handle parallel to the centre line of the kayak (**blue arrow**).

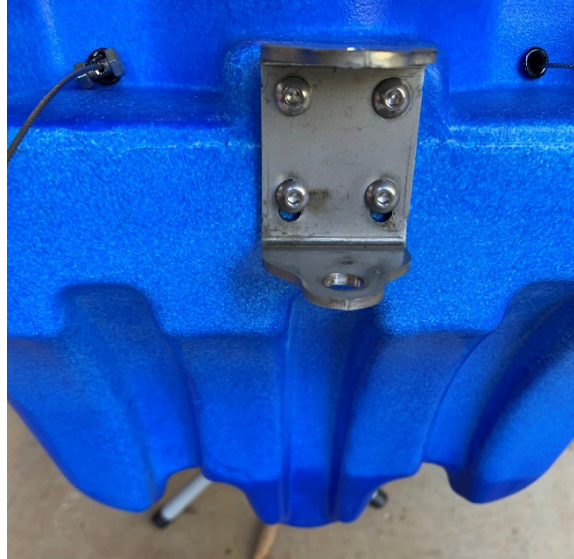


Next, ensure your rudder is untangled and the lines run free when taking it out of the cargo area. Put the pin of the rudder through the rear hole in the kayak. Check that the raising and lowering of the rudder operates smoothly. Next put in the rudder security pin through the hole at the bottom of the rudder pin. Using a knife, screwdriver or pliers open the security pin ends to prevent the pin coming out and losing the rudder.

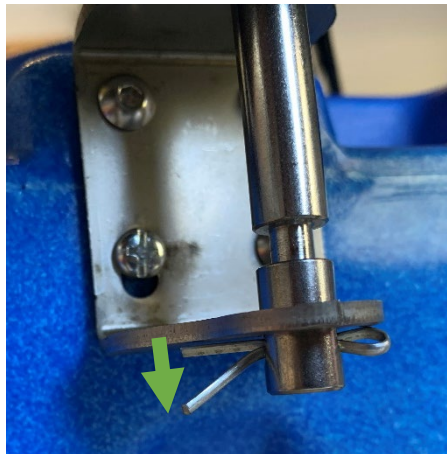
For rudder assembly you will require the 4 short screws, rudder bracket, security pin, allen wrench and the rudder which should be in the cargo bay (sometimes it can be in the rear hatch).



Place the two holes (**green arrow**) of the bracket at the top when securing the bracket to the back of the kayak. And insert the 4 screws with the allen wrench.



Next, ensure your rudder is untangled and the lines run free. Put the pin of the rudder through the rudder bracket holes. Check that the raising and lowering of the rudder operates smoothly. Next put in the rudder security pin through the hole at the bottom of the rudder pin. Using a knife, screwdriver or pliers open the security pin ends (**green arrow**) to prevent losing the rudder, through the pin popping out.



Next grab hold of the rudder steering handle on the left side of the kayak near where the seat would be located. Pull the rudder handle all the way left and then all the way right, gauge where the centre point of the motion is, usually this is parallel to the centre line of the kayak. Leave the rudder steering in the approximate centre spot.

Note the steering screws will already be secured to the wires at the back of the kayak, they are not in the parts packets. Next remove the butterfly nuts (**Yellow arrows**) from each rudder wire and put the bolts through each side of the rudder. Put the butterfly nuts back on so that the rudder is in the middle and follows the centre line of the kayak. Adjust the rear nuts (**Orange arrows**) to ensure proper alignment and to moderately firm fit on the steering. The steering wires should have a little bit of slack for ease of turning and to ensure minimal wear and tear where they enter the kayak.

Then run the rudder steering handle through the full range while watching the rudder and the rudder should respond according to your movements, Adjust as needed.



Next, you'll need to thread it through the two holes in the actual rudder blade. Note the blade below is in the up position. Thread the line first through the hole that is near the curve of the rudder blade (**Green Arrow**, it will be the hole right at the back of the kayak if the rudder is down). And then thread it straight back to the hole (**Yellow Arrow**) closest to the securing knob (**Orange Arrow**). Once you come through the second hole tie a knot (**Yellow Arrow**). Test the raising and lowering cable from the cockpit to ensure it works smoothly.

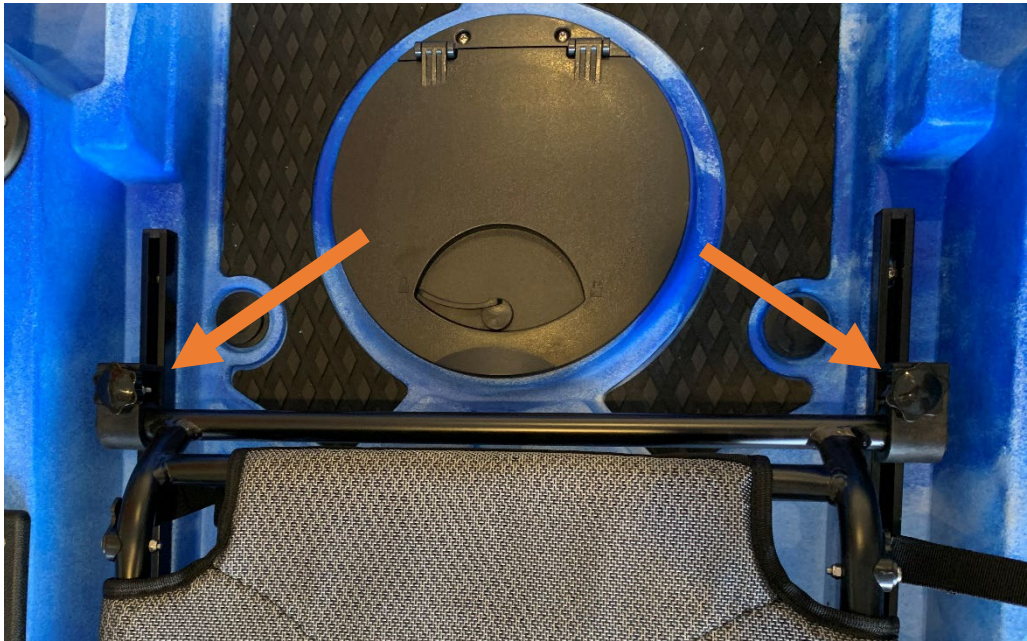


Stadium Chair Assembly

For the stadium chair assembly you'll need the 2 X long screws, black seat brackets and allen wrench. In each seat rail you will have two slider receivers in which to you can secure your seat. Move one to the back of the kayak for each rail and screw in the black bracket in each.

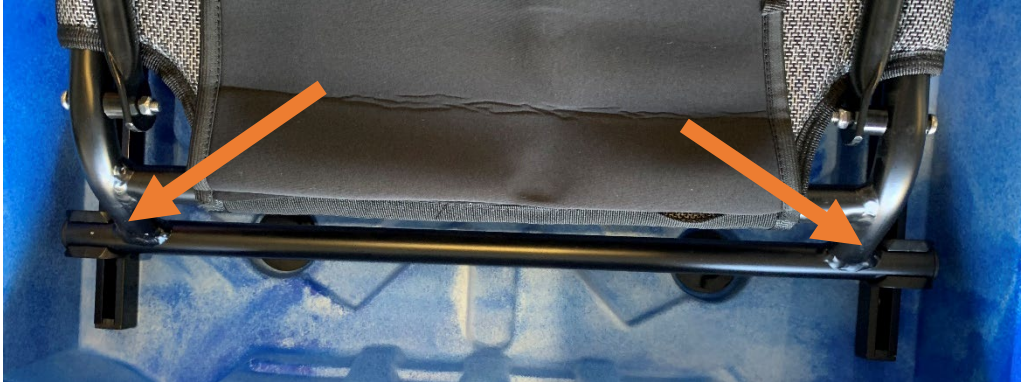


Sit the back bar of the seat on top of the brackets, but don't pop them in yet. Screw the front of the seat into the two front slider receivers.



And then push the back bar down into the back seat brackets to secure that.

RY REEL YAKS



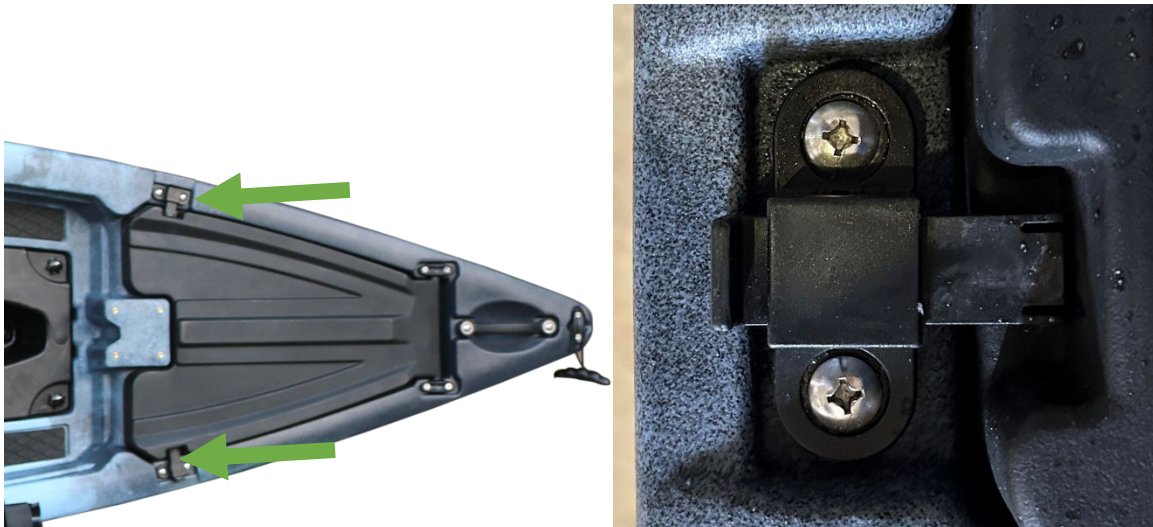
Lastly connect and secure the two side straps which hold the back of the seat upwards. Secure this in a slightly off of 90 degree upright position, this can be further adjusted once you're on the water. Also remember to take your allen wrench on your first couple of outings in case you want to further adjust your seat location.

Paddle Assembly

The paddle assembly is super simple, just depress the button and pop it into the desired hold (3 locations to choose from) to get the preferred orientation of your blades. Then use the paddle stretch cord to secure it. Remember not to leave it attached like that when the kayak is travelling on your car or truck.



Lastly attach the latches on either side of the forward hatch, by screwing in the two screws.



RY REEL YAKS

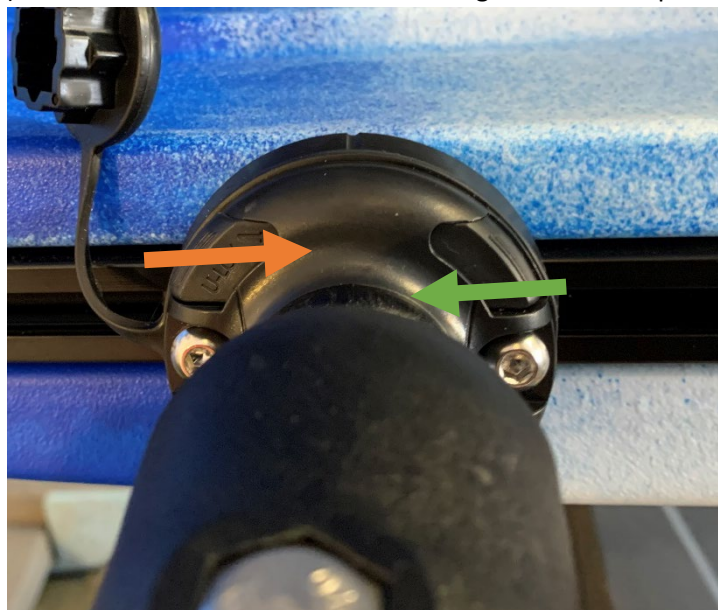
Fishing Rod Holder Assembly

The rod holder assembly requires the: rod holder, the rod holder bracket (3 pieces), 2 x screws and the allen wrench.



Combine the three black round pieces together with the bottom, middle and top as indicated above. Decide which rail in the cockpit you want to secure it to and move the slider receivers apart the approximate width of the screw holds and insert the screws.

Next insert the fishing rod holder into the now secure base by 'opening' the base as indicated below (**orange arrow**). Next close the slider to lock the fishing rod holder in place (**green arrow**).



You're now ready to hit the water!!

SEAT RAISERS

You will have 4 seat raisers included in your kayak. This will give you the ability to elevate your seat across three levels.

If you want to replace your existing seat connections with the raisers it is pretty straight forward. You will have 2 x left raisers and 2 x right raisers.



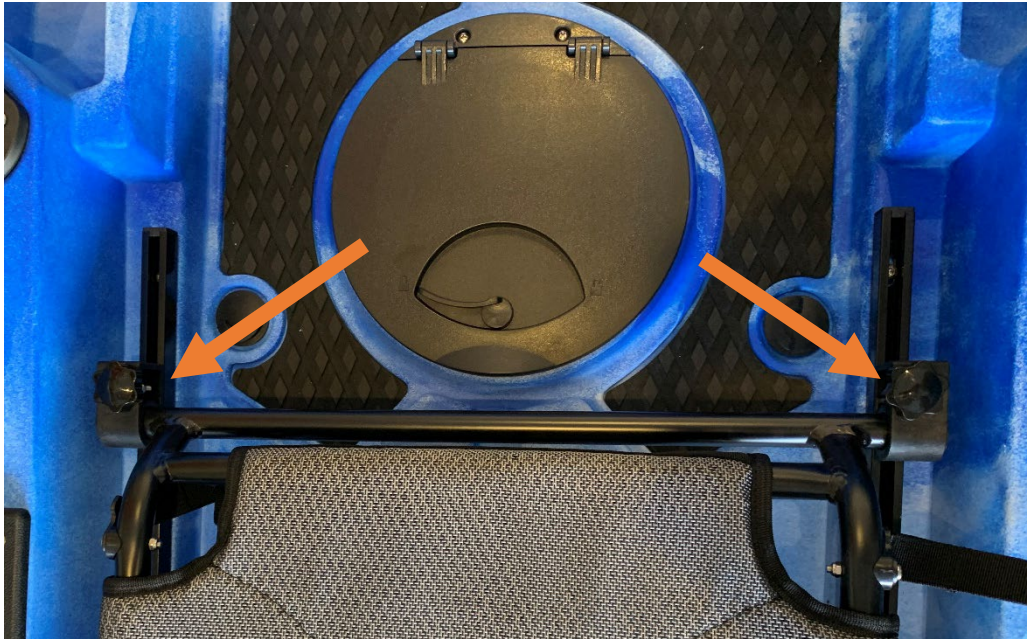
Step 1:

On the rear seat bar, remove the end plastic plugs. You may need a flat head screwdriver to do this.

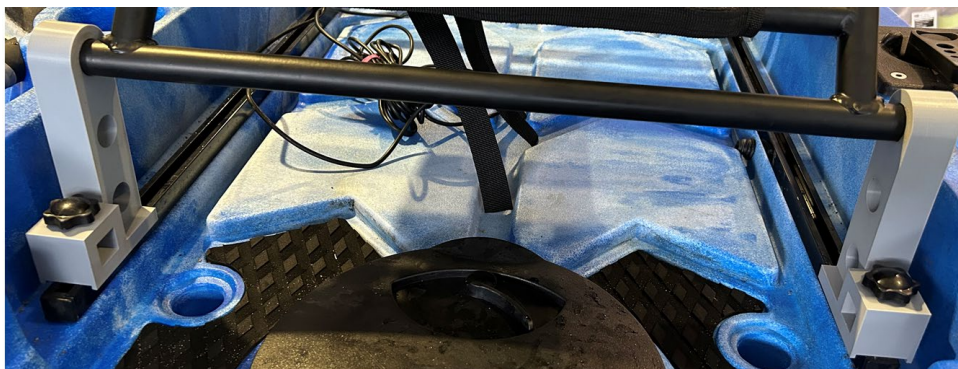


Step 2:

On the front seat bar, remove the front seat brackets. You will need a flat head screwdriver to remove the end caps. There is a bungy cord that runs through the bar keeping the two brackets secured to the bar. You will need to pull either of the brackets out sufficiently to see the bungy cord and undo the knot that ties them together. (Note that once you undo the bungy cord you can go back to using these brackets again, but securing the bungy again in the same manner may be difficult).

**Step 3:**

Put the four seat raisers on the seat bars. Ensure that each of the feet is pointing out from the chair and not in under the chair. Secure each screw into their respective rail sliders.



And a reminder if you have any questions or concerns in respect of your Reel Yaks kayak then please email us at info@reelyaks.com or call us on 855 202 5035.

If you are looking for any accessories to go with your Reel Yaks kayak such as a trolling mount, bimini, etc. then please visit us at REELYAKS.COM

Kayak Accessories

If you are looking for any accessories to go with your Reel Yaks kayak or spare parts then please visit us at REELYAKS.COM

<p>Kayak Trolley Dolly</p>		<p>Canoe Cover Waterproof UV Protection Dust Cover(Grey)</p>	
<p>Kayak Uv waterproof Cover</p>		<p>Kayak Motor Mount Bar</p>	
<p>Kayak Stabilizer Pontoons</p>		<p>Spare Pedal Drive Fins</p>	
<p>6 pack Accessory Rail Slider Mounts</p>		<p>Kayak Anchor Trolley Kit</p>	
<p>Kayak Uv shade Bimini</p>		<p>Kayak Sail Kite</p>	
<p>Pedal drive & bar mounted trolling motors</p> <p>Wide range 24lbs - 86lbs thrust</p>		<p>360 Fishing Rod Holder</p>	

Also checkout our **Reel Yaks Kayak Fishing shirts with SPF50 Protection**

And many many more....

And don't forget to fill out the warranty form on our site.

RY REEL YAKS

Also checkout our **Reel Yaks Kayak Fishing shirts with SPF50 Protection**
And many many more....

