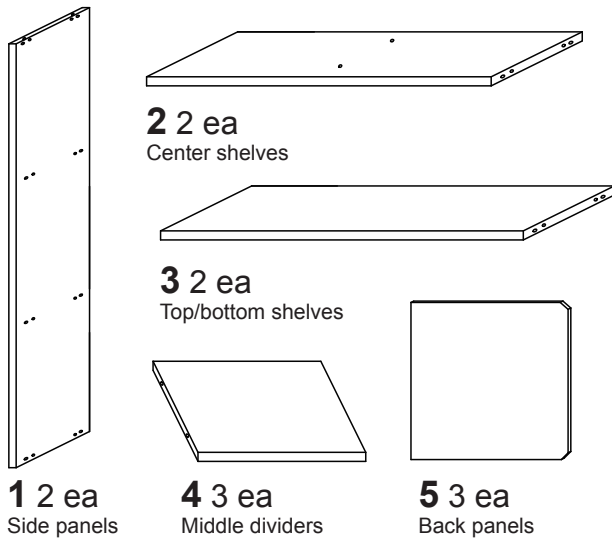


Part	Reference
1	F10411
2	F10412
3	F10413
4	F10414
5	F10415
A	F10372
B	F10373
C	F10374
D	F10407
E	F10376
F	F10377
G	F10378
H	F10379
I	F10380
J	F10381
K	F10382
L	F10383

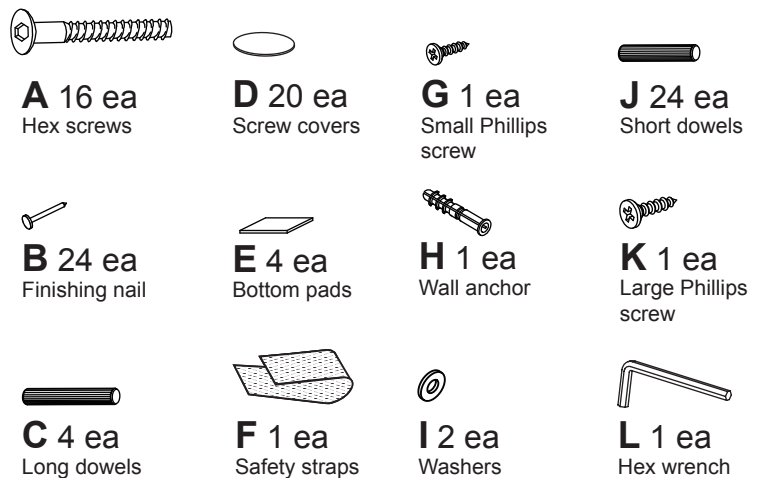
Care Instructions:
Wipe clean with a dry cloth.

Tools Needed:
A Phillips screwdriver and a hammer.

PARTS:



HARDWARE:



WARNING

- This unit contains small parts which could be a choking hazard for small children. Children should be under adult supervision at all times or serious injury could occur.
- Always unload unit prior to moving the unit. The weight of personal belongings can cause the unit to become unstable and either tip or collapse. Serious bodily injury and/or damage to personal belongings may occur.
- Do not overload unit. If any shelf, top, or bottom of unit bows or bends, it is overloaded. The shelf, top, or bottom could collapse and cause serious bodily injury and/or damage to personal belongings.
- Do not climb or step on the unit. The unit may become unstable and either tip or collapse. Serious bodily injury and/or damage to personal belongings may occur.
- Do not mount or attach anything to the sides, rear or front of the unit as this can create a force which can cause the unit to tip. Serious bodily injury and/or damage to personal belongings may occur.
- Do not hang this unit on the wall. The product structure is not designed for wall hanging. Serious bodily injury, damage to personal belongings, and/or damage to the wall may occur.
- All units must be secured individually to a wall stud using the included safety strap and screws. If wall stud is not accessible consult your local hardware store for appropriate mounting hardware. Failure to do so may create an unsafe tipping hazard that could lead to serious bodily injury and/or damage to personal belongings.
- Follow proper safety procedures when using power tools and ladders (when applicable).
- We recommend you protect your work surface during assembly to prevent scratching or damage to table tops, wood floors, etc.

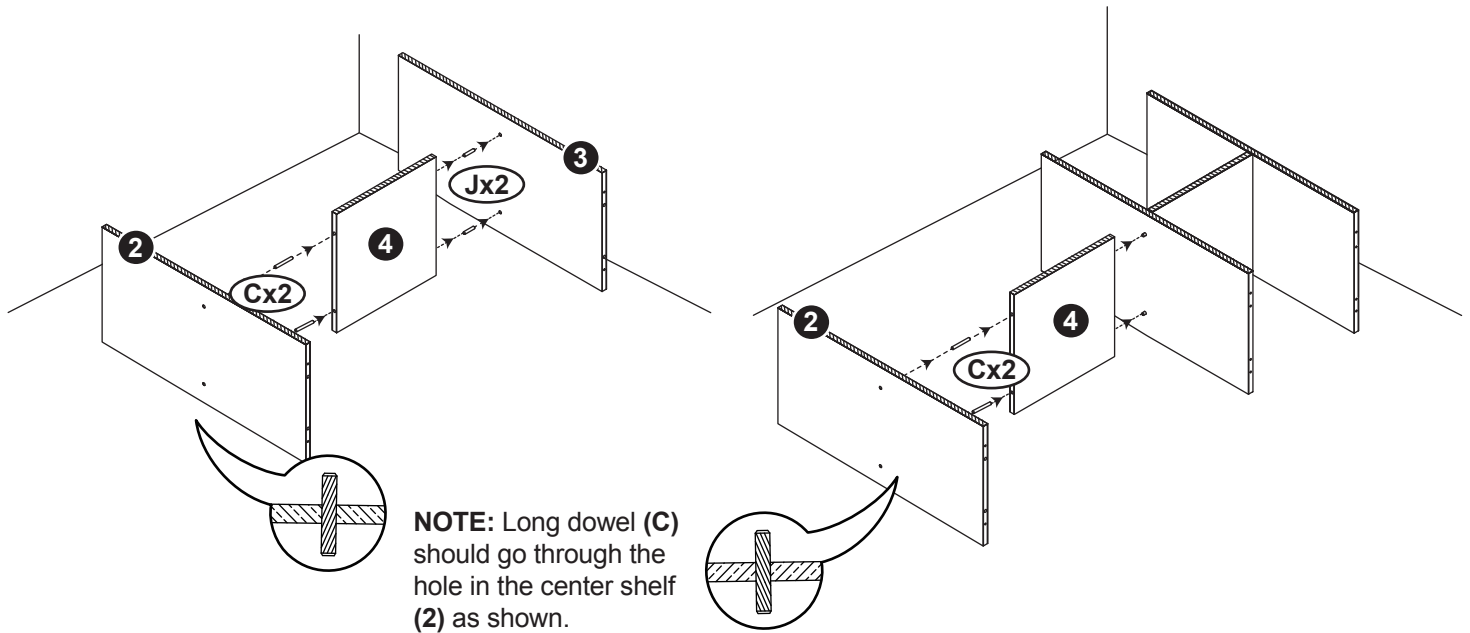
As you assemble your new organizer, make sure the unfinished edge of each board is facing up.

STEP 1:

- Insert two short dowels (**J**) into the inner predrilled holes of a top/bottom shelf (**3**).
- Firmly press a middle divider (**4**) onto the dowels as shown below.
- Insert two long dowels (**C**) into the middle divider (**4**).
- Firmly press a center shelf (**2**) onto the assembled unit.

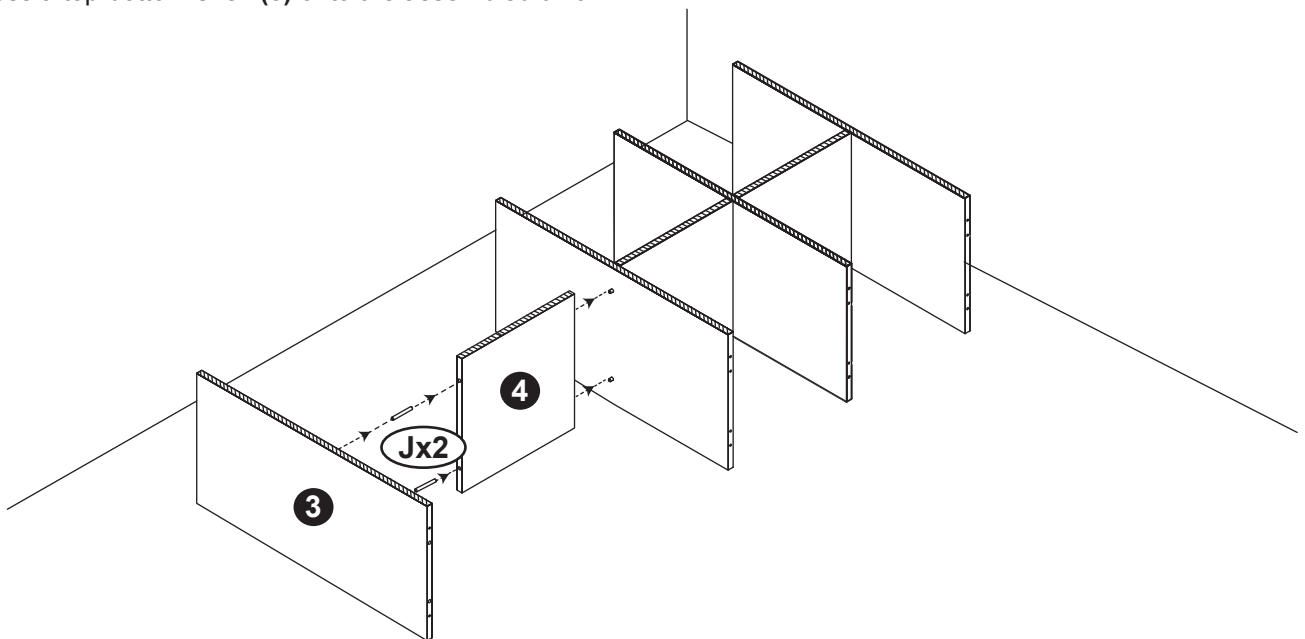
STEP 2:

- Firmly press a middle divider (**4**) onto the assembled unit as shown below.
- Insert two long dowels (**C**) into the middle divider (**4**). Firmly press a center shelf (**2**) onto the assembled unit.



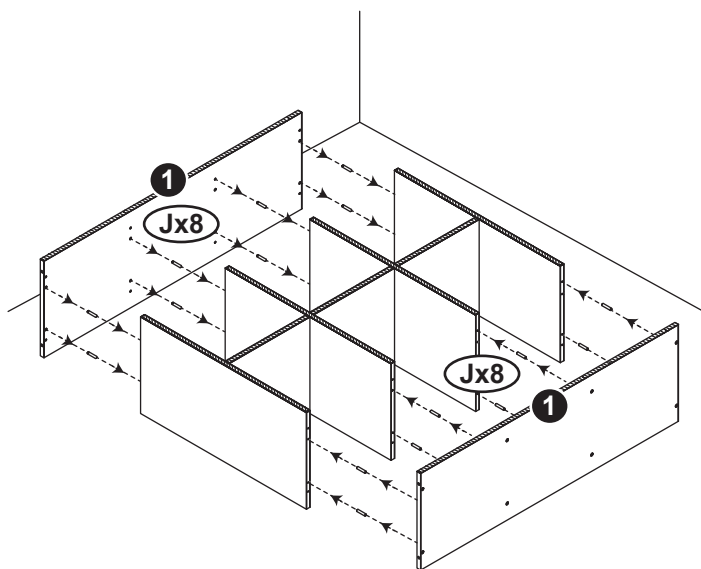
STEP 3:

- Firmly press a middle divider (**4**) onto the assembled unit as shown below.
- Insert two short dowels (**J**) into the middle divider (**4**).
- Firmly press a top/bottom shelf (**3**) onto the assembled unit.



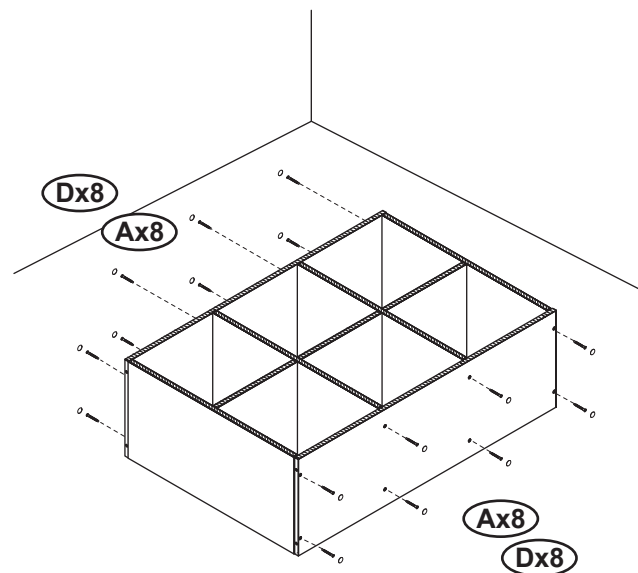
STEP 4a:

- Place 16 short dowels (**J**) into the ends of the assembled unit.
- Firmly press side panels (**1**) onto short dowels.



STEP 4b:

- Use 16 hex screws (**A**) to secure side panels to unit.
- Place a screw cover (**D**) over the 16 screw heads.



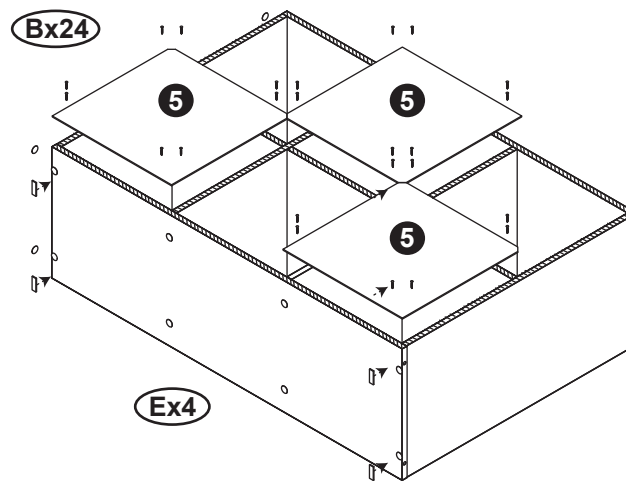
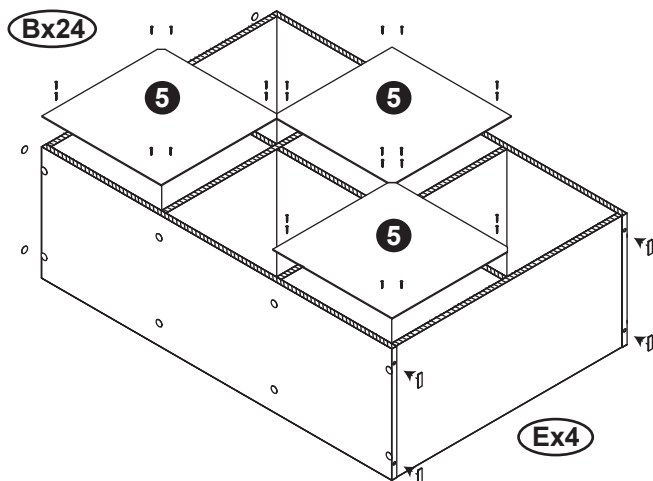
STEP 5:

- Attach back panels (**5**) to the back of the organizer with 24 finishing nails (**B**) using a hammer (not provided).
- Attach 4 bottom pads (**E**) to either the short side or the long side depending on how you will use the organizer.
- If not stacking organizers, put screw covers (**D**) over any open pre-drilled holes.

Bottom pad placement for tall organizer

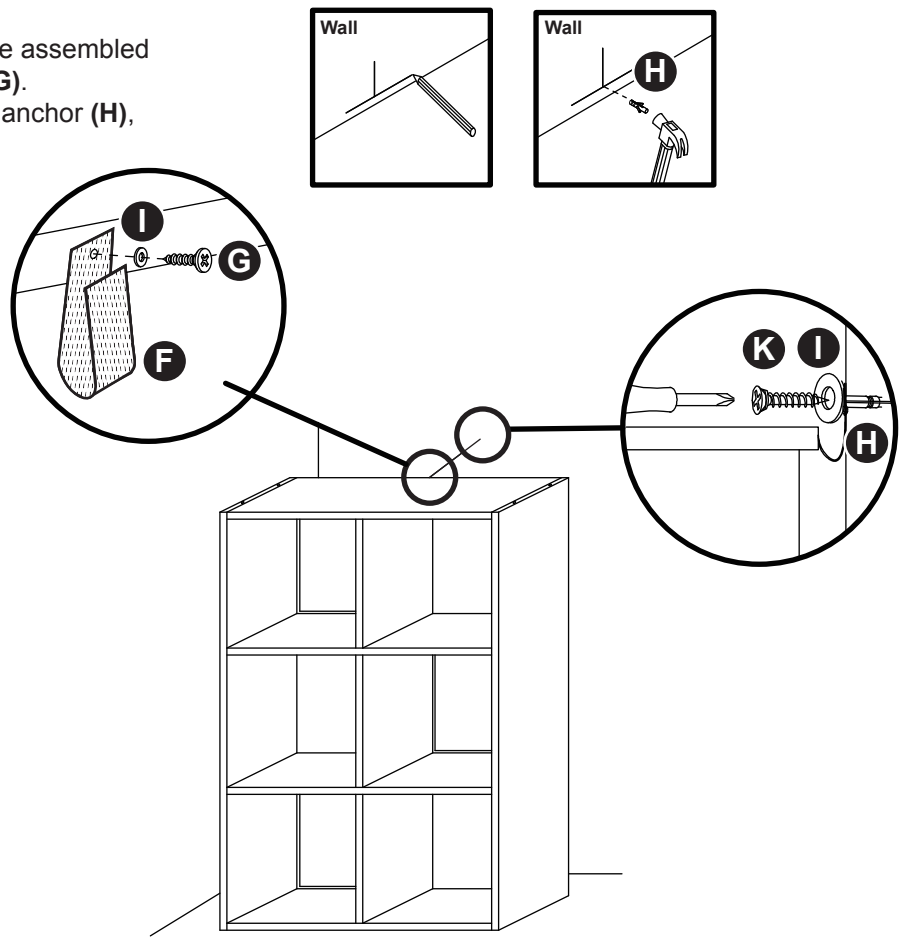
OR

Bottom pad placement for wide organizer




STEP 6:

- Stand the organizer up
- Install the safety strap (F) to the back of the assembled unit using a washer (I) and a Phillips screw (G).
- Attach safety strap to the wall using a wall anchor (H), Phillips screw (K) and a washer (I).



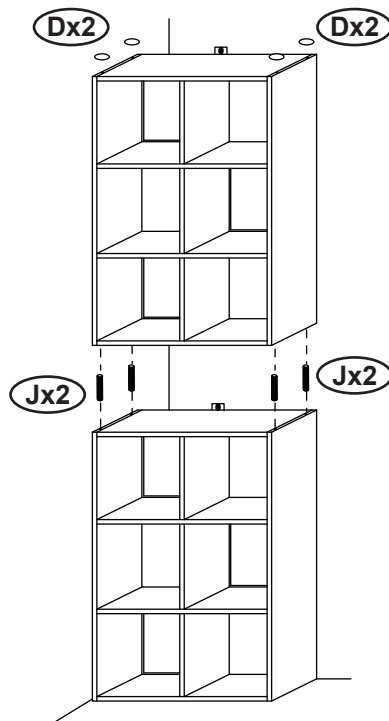
STACKING INSTRUCTIONS:

Note: Multiple units (sold separately) can be stacked using the extra four dowels (J) included. When stacking multiple units make sure both units have the safety strap from step 6 installed to the back of the unit and to the wall for stability.



WARNING

All units **MUST** be fastened to the wall. When stacking units, the unit on the bottom must be attached to the wall first before setting another unit on top. Do not stack units more than 72" high.



Note: To hide the dowel holes on the top of a single unit or the top of a stacked unit. Place four screw covers (D) over the holes.



8680 Swinnea Road • Suite 103 • Southaven, MS • 38671

NEED HELP? For help with assembly, or if you are missing a part, please call Whitmor's Consumer Care Team, 1-888-944-8667 between 8 a.m. and 4:30 p.m. (Central Standard Time) Monday through Friday. Or email: help@whitmor.com. Visit us online at www.whitmor.com