









RMR Extreme DEGREASER HEAVY DUTY CLEANUPS

SELL SHEET

RMR Heavy Duty Concentrated Degreaser is a professional-grade cleaner and degreaser specially formulated to penetrate surfaces and equipment to completely dissolve oil, grease, grime, residue, adhesives, soot, smoke, odors, and stains. This advanced indoor/outdoor cleaner is suitable for fire and water restoration, treating shop floors, industrial supplies, commercial and restaurant equipment, tools, appliances, and more!

-  2-3 Ounces of Extreme Degreaser with 32 ounces of water for lower soil loads
-  No chlorine, non-toxic, non-flammable, non-corrosive, NPE-free, and Butyl-free
-  Quickly dissolve grease, oil and adhesives
-  Formulated with biodegradable ingredients for a safer clean
-  Ideal for heavy duty interior and exterior cleaning
-  Great for fire, water and mold restoration

For Technical Information call 866.822.8744

These suggestions and data are based on information we believe to be reliable. They are offered in good faith, but without guarantee, as conditions and methods of use of this product are beyond our control. Neither RMR Solutions LLC, nor its agents shall be responsible for the use or results of use of this product or any injury, loss or damage, direct or consequential. We recommend that the prospective user determine the suitability of this product for each specific project and for the health and safety of personnel working in the area.



SAFE AROUND KIDS
AND PETS



DYE FREE



CONCENTRATED FORMULA

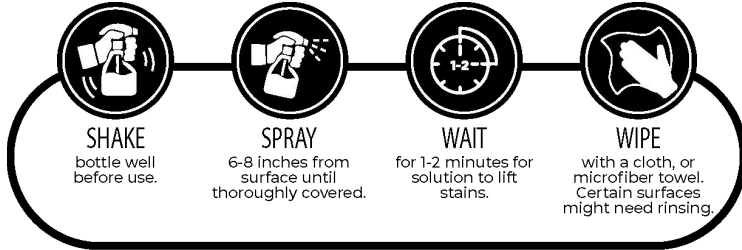


BIODEGRADABLE
INGREDIENTS



TOUGH ON THE DIRT KIND TO THE EARTH

How To Use:



DILUTION RATIO

- 2-3 OZ OF DEGREASER: 32 OZ OF WATER
- 8-10 OZ OF DEGREASER: 1 GALLON OF WATER

IT IS BEST TO START WITH A LOW DILUTION AND WORK YOUR WAY UP TO FULL STRENGTH TO DETERMINE WHAT WILL WORK BEST FOR THE SOIL LEVEL.

RMR Heavy Duty Concentrated Degreaser is ideal for commercial and industrial applications. Its concentrated formula can be used at full strength or diluted to offer a cost-effective solution. You have the flexibility to determine the dilution ratio that best suits your project or the cleaning of your remediation equipment. This versatile solution is something you're going to want in your tool box!

Amazon Rating: 4.7/5 ★★★★★

“I tested this product on various surfaces including stainless steel, tile floors, and walls. I even used it for mopping in a cafeteria. I must say, it provided excellent results in cutting grease. It effectively eliminates oil stains, leaving the area exceptionally shiny and clean. I use it undiluted, without any dilution. The formula is highly durable and requires only a small amount for effective cleaning.”

“I have used some other cleaners before that was ok however this will work great and as big as this is, it will last our family for quite some time!”

For additional information and for technical and safety data sheets, please visit www.rmrsolutions.com

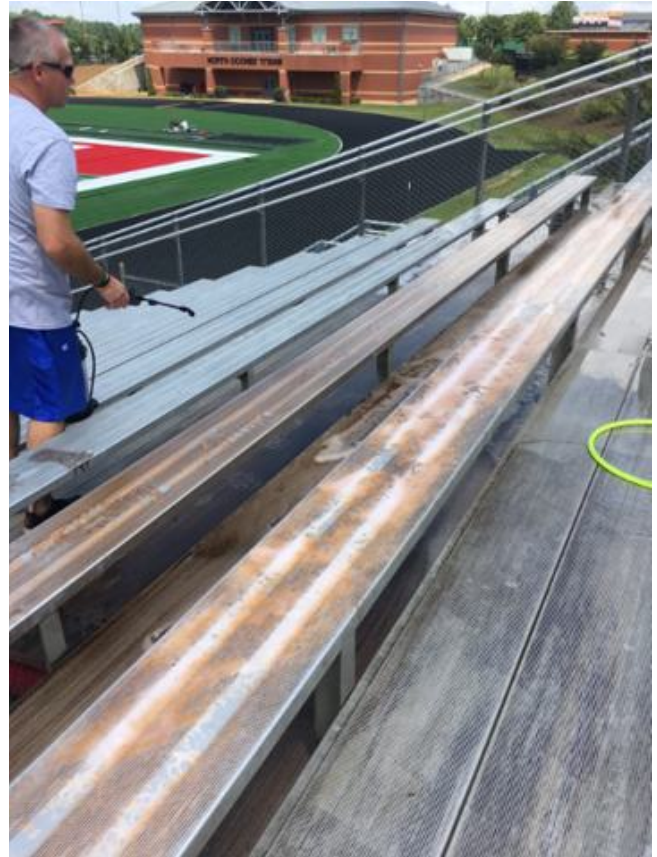


Made in USA

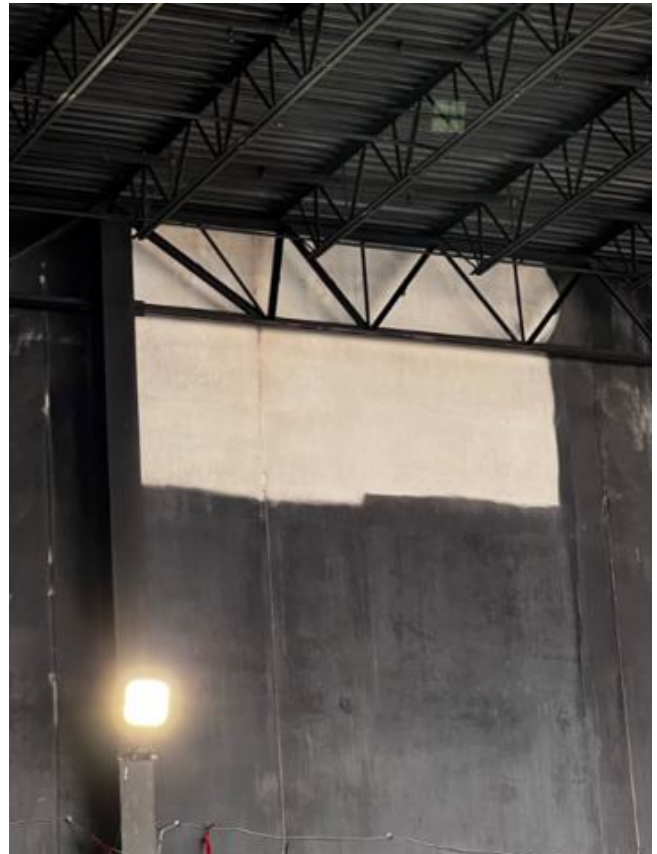


RMR SOLUTIONS

AFTER (LEFT) & BEFORE (RIGHT)



HEAVY DUTY DEGREASER VS. FIRE DAMAGE



RMRSOLUTIONS.COM