



# LIFETIME STEEL POST™

by Jewett Cameron Co.

## LifeTime Steel Post™

*Designed by Installers for Installers*

The following installation instructions should be used as guidelines only. If you are a tradesmen please use your training and experience. If you are a DIY consumer and have questions, please consult your local building and permit department, or a professional.  
**Take all proper safety precautions.**

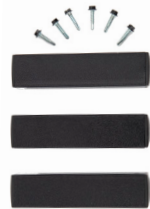


Know what's below.  
Call before you dig.

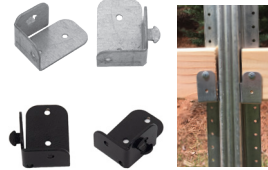
**Remember you Must CALL Before You Dig**

### OPTIONAL ACCESSORIES - SOLD SEPARATELY

**Model LTP 10003  
GAP FILLER KIT**  
for use with  
*Adjust-A-Gate™*



**Model LTP 10246 (Galv)  
Model LTP 20246 (Black)  
HURRICANE CLIPS**  
use in high-wind or  
hurricane-prone areas



**Model LTP 10006  
RAIL BRACKETS**  
use to hold rails in  
place until secured



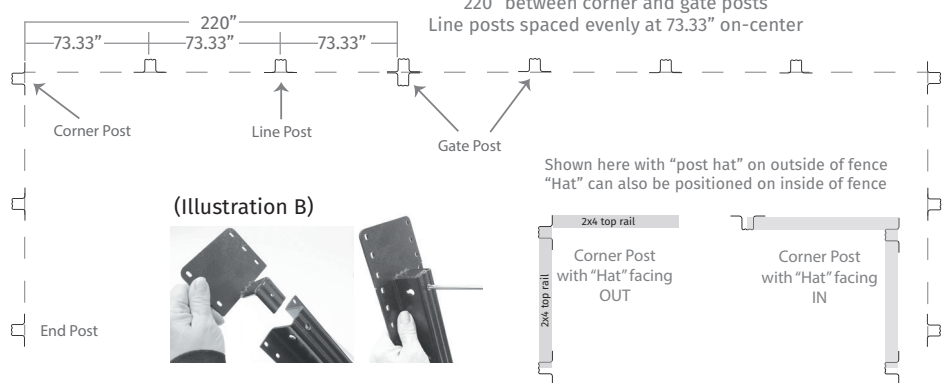
#### STEP 1: SITE LAYOUT & MARKING

Once you have established your legal property lines. Layout and clean the fence line of any debris, limbs, plants and as much as possible level or flatten the ground before you begin the fence layout. **(Note: if there are any underground utility marks close to your post locations proceed with extreme caution).**

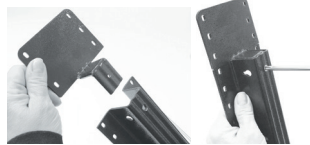
Stake the locations of your **CORNER, END, AND GATE POSTS.**

*(Hint: The post can be hidden if desired, see illustration on pg 2)*

(Illustration A)



(Illustration B)



#### STEP 2: DIGGING AND SETTING END, CORNER AND GATE POSTS

Remove and re-attach **UPPER RAIL PLATE** to post. (Illustration B)

Now install your **END, CORNER AND GATE POSTS.** Set these posts to a minimum of 30" depth x 10" diameter holes.

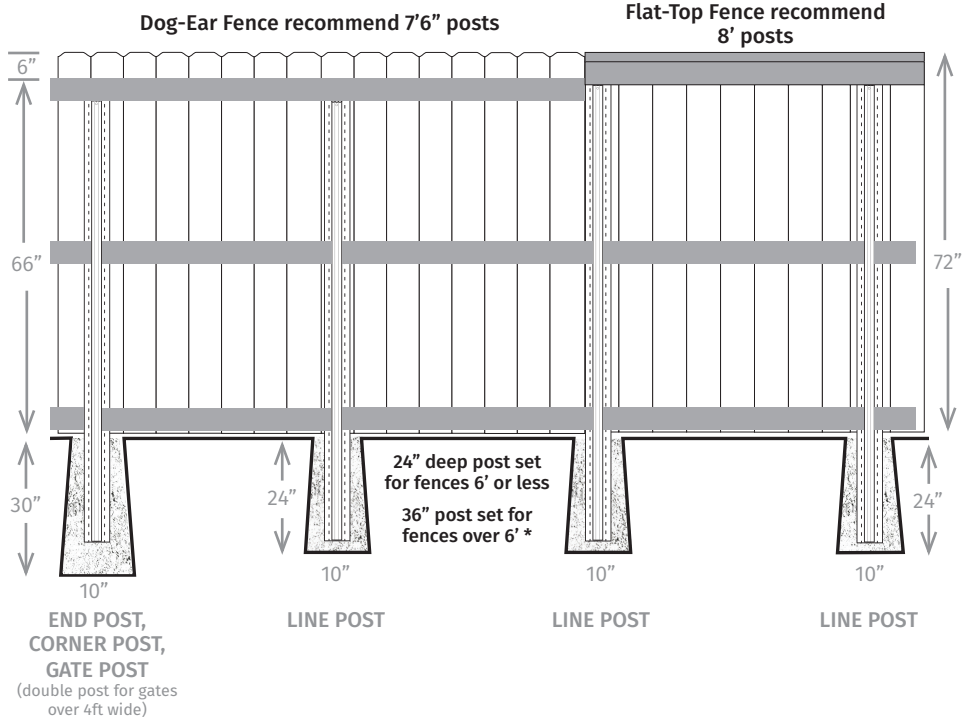
*(Hint: It is recommended to use a single LifeTime Post for gates up to 4' wide, and a double back-to-back post for gates over 4' wide - see illustration on page 2)*

Set the posts in mixed damp concrete, raise and level the posts to the proper height, measuring from the ground to the **TOP OF THE UPPER RAIL PLATE.**

#### STEP 3: DIGGING AND SETTING LINE POSTS

*(Hint: once the cement has set on the corner and gate posts, run a string between them to help with height and alignment of line posts)*

The line posts should be spaced no more than 92" apart on-center and as evenly spaced as possible. (Example: the space between two end posts is 220", you would use two line posts with spacing of approx. 73.33" apart, see illustration A) Dig holes for the **LINE POSTS** no less than 24" deep x 8-10" in diameter. Raise the line post allowing damp concrete to flow under the bottom of the steel post until the post height is the same as the two end posts, using your string as a guide.



\* Posts up to 12' available - call for more info.

**Step 4: OPTIONAL HURRICANE BRACKETS**

(sold separately)

The LifeTime Post wood fence system has brackets available for high-wind or hurricane-prone locations. These brackets also help to prevent rail sagging. Install prior to fence rails.

**Minimum recommendation:**

**Brackets on center rails**

For a more robust installation, or for areas with sustained winds, we recommend brackets on both the center and top rails.

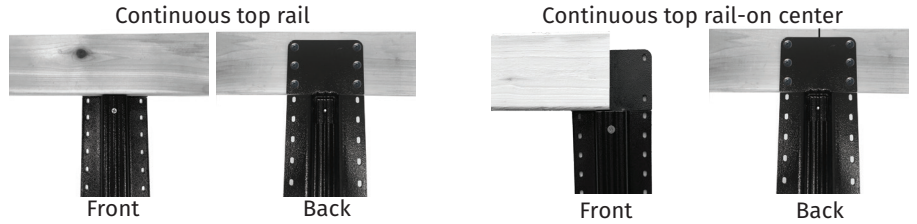


**STEP 5: INSTALLING FENCE RAILS**

The LifeTime Post is designed to have the top fence rail installed, "on the top" of the steel post and attached to the UPPER RAIL PLATE. This will allow vertical rail support and prevent sagging between the posts.

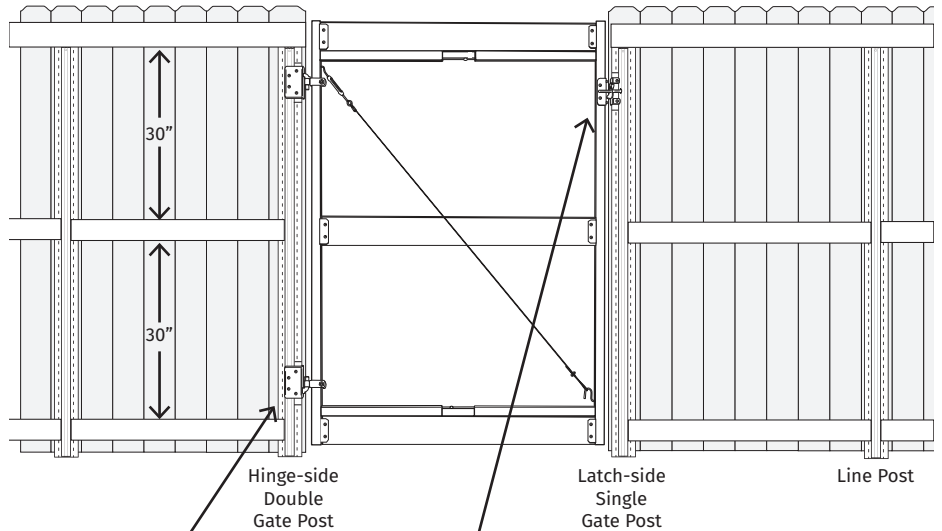
Recommend using steel to wood screws, through the back of the post.

(Models LTP 10004 or LTP 10005 - jar of 500)



The center and bottom rail will be spaced 30" apart matching the Adjust-A-Gate™ steel gate frame (see step 7 for AAG install).

This LifeTime Steel Post™ and Adjust-A-Gate frame system completes a robust Lifetime wood fence.

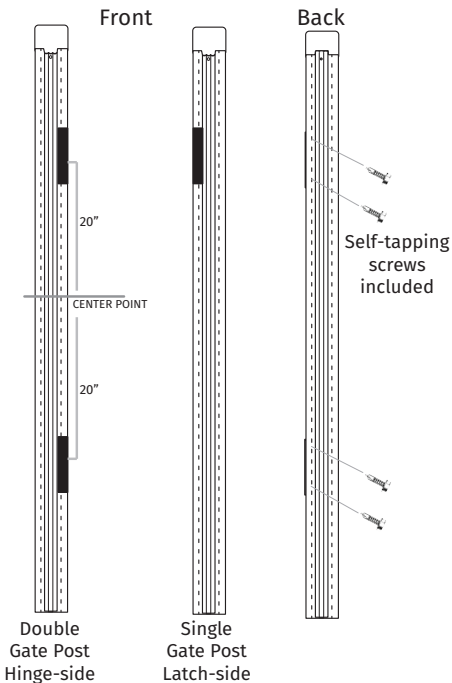
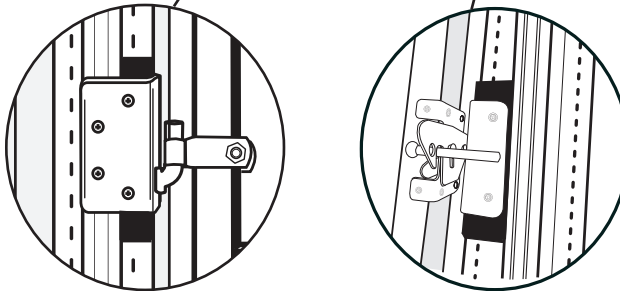


**Step 6: INSTALLING FENCE PICKETS**

Fence pickets are typically installed 2" off the ground and extend up to 6" above the top rail.

**STEP 7: ADJUST-A-GATE™ ALL STEEL GATE FRAME SYSTEM**

We recommend using our GAP FILLER TUBES, Model #LTP10003, pack of three. **TWO** for the hinge-side gate post and **ONE** for the latch-side gate post. Using the self-tapping screws included, attach these to the gate posts, at the correct height for the hinges and latch. Follow instructions included with your Adjust-A-Gate to complete assembly.



**DOUBLE GATE POST**  
 Recommended for gates over 4ft wide  
 Bolt two posts together back-to-back.  
 Nuts & Bolts are included  
 with GAP FILLER KIT  
 # LTP 10003

**OPTIONAL COVER BOARDS**  
 In some cases you may want to cover the LifeTime Post.

03-LTP-POST-INSTALLATION 2019-04-19