

Haunted Hill Farm®

Presents our ghoulish collection of Halloween décor from

FRASER HILL FARM

Thank you for choosing Haunted Hill Farm!
If you have any questions, concerns or suggestions, please
contact us directly.

✉ **Boo@HauntedHillFarm.com** (Anytime)

☎ **1-888-840-4559**

(9AM to 9PM Eastern Time, Monday - Friday)

(9AM to 5PM Saturday - Sunday)

In the unlikely event that you experience a problem, please provide pictures and a description of the problem, a receipt (if available), name and address of the purchaser and the name of retailer where you purchased the product.

Please do not return this item to the retailer.

See the full Haunted Hill Farm collection and get online support for assembly, troubleshooting, care and maintenance at:

www.HauntedHillFarm.com

Please follow the step by step guide and enjoy your product!

HHSCR-8FLSA



**CAUTION: DO NOT ASSEMBLE WITHOUT ADULT SUPERVISION
REQUIRES AT LEAST 2 ADULTS TO ASSEMBLE**

HELPFUL TIPS AND HINTS

1. Lay out all items on the ground prior to assembling.
2. Assemble item laying down on the ground: make sure to assemble it face UP otherwise the weight of the item could cause pieces to break.
3. Make sure all clothes, hair, and accessories are in place before lifting the item upright.
4. Have 1-2 people lift the item from the back and 1 person should be in front holding the item by the legs or center pole to keep it steady.

The model number of your item is printed on the side of your carton.
Always use this number to identify your item.

Thank you for your purchase of this quality Halloween decor. With proper use and care, your Halloween decor will provide you with years of enjoyment. Please follow the instructions on how to assemble and disassemble your item. If you should have any problems with your item, or you have any questions, **DO NOT** return it to the place of purchase. Please call our toll-free number: **1-888-840-4559** and a customer service representative will assist you. Enjoy your Holiday!

PACKAGE CONTENTS

LABELED PARTS:



Base



Leg Poles Lower



Leg Poles Middle, one with Control Box



Leg Poles Upper



Waist Support



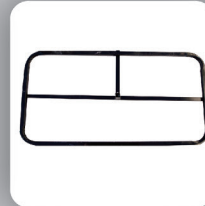
Waist Frame



Chest Support



Arm Poles



Shoulder Frame



Hands



Base Poles



Head

UNLABELED PARTS:



Pants



Screws and Nuts



Shirt



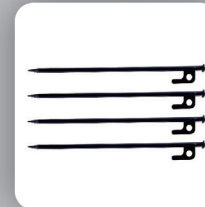
Power Adapter



Tryme Button



Tether Line and Carabiners



Ground Stakes

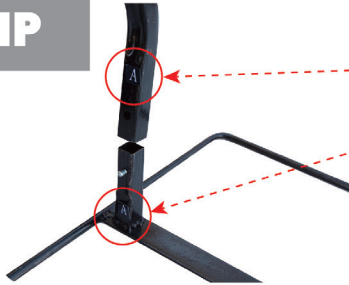
PREPARATION

Estimated Assembly Time: 60 Minutes

Before assembling the product, carefully remove all parts from the box and lay out on a flat surface. Make sure all parts are present. Compare parts with package contents list. If any part is missing or damaged, do not attempt to assemble, install or operate the product. Read through directions before assembling.

ASSEMBLY INSTRUCTIONS

TIP



LABEL "A"

Each pole has been labeled the letters on the end, please follow the letters to assemble.

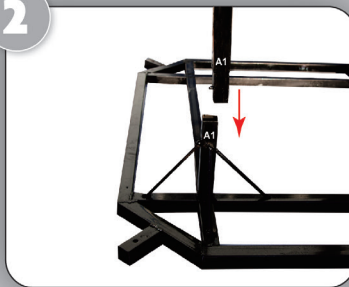
Let's start assembling!

1



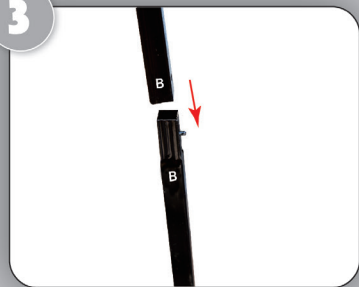
Insert and snap lock the lower left leg pole into the metal base. (Match A to A, See Figure 1)

2



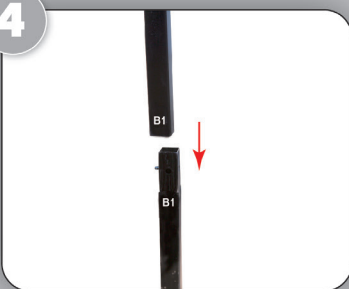
Insert and snap lock the lower right leg pole into the metal base. (Match A1 to A1, See Figure 2)

3



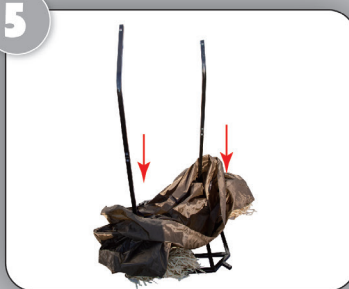
Insert and snap lock the middle left leg pole into the lower left leg pole. (Match B to B, See Figure 3)

4



Insert and snap lock the middle right leg pole into the lower right leg pole. (Match B1 to B1, See Figure 4)

5



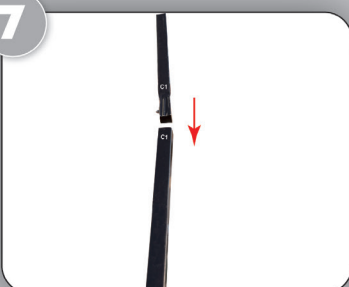
Place the pants facing forward over the assembled metal base and middle leg poles. (The front side has a patch on the right knee. See Figure 5)

6



Tip the assembled base and legs against the shipping box to continue assembly. Insert and snap lock the upper left leg pole into the middle left leg pole. (Match C to C, See Figure 6)

7



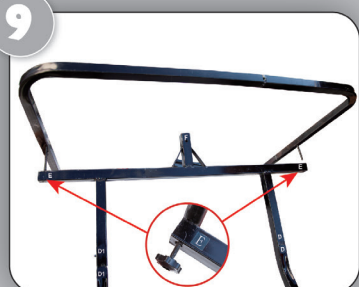
Insert and snap lock the upper right leg pole into the middle right leg pole. (Match C1 to C1, See Figure 7)

8



Insert and snap lock waist support poles into the upper leg poles. (Match D to D, D1 to D1, See Figure 8)

9



Place the waist frame on the waist support, match the hole to the hole, insert the screw and screw on the nut. (See Figure 9)

10



Pull the pants up and tie the ropes together to fasten around the waist frame. (See Figure 10)

11



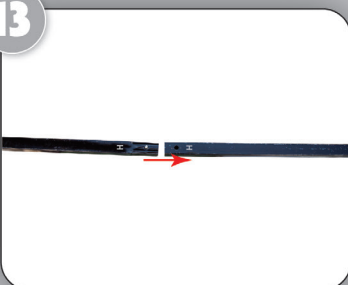
Insert and snap lock the first chest support pole into the waist support pole. (Match F to F, See Figure 11)

12



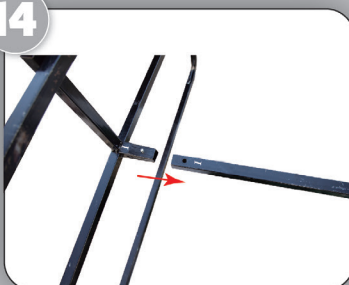
Insert and snap lock the second chest support pole into the first chest support pole. (Match G to G, See Figure 12)

13



Insert and snap lock the third chest support pole into the second chest support pole. (Match H to H, See Figure 13)

14



Insert and snap lock the shoulder frame pole into the third chest support pole. (Match I to I, See Figure 14)

15



Place the shirt facing forward over the entire frame and tie the ropes together to fasten around the shoulder frame. (See Figure 15)

16



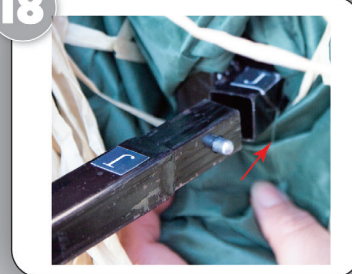
Attach the tether line and carabiners to the shoulder frame and split the lines, one is in front, the other one is at the back, keep them straight on the ground. (See Figure 16)

17



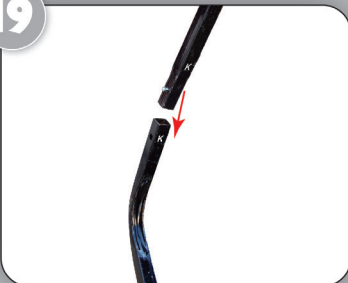
Tie and fasten the ropes to cover the shoulder frame, only leave one untie. (See Figure 17)

18



Fold back the left arm sleeve, insert and snap lock the left arm straight pole into the left shoulder frame. (Match J to J, See Figure 18)

19



Insert and snap lock the left arm curved pole into the left arm straight pole. (Match K to K, See Figure 19)

20



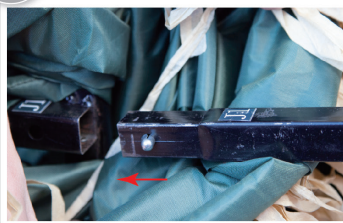
Insert and snap lock the left hand pole into the left arm curved pole. (Match L to L, See Figure 20)

21



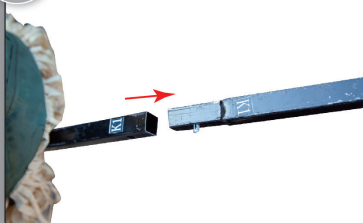
Thread one rope in the sleeve through the ziptie on the hand and tie them together to fasten the sleeve. (See Figure 21)

22



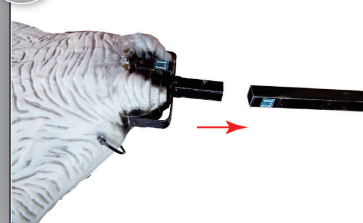
Fold back the right arm sleeve, insert and snap lock the right arm straight pole into the right shoulder frame. (Match J1 to J1, See Figure 22)

23



Insert and snap lock the right arm curved pole into the right arm straight pole. (Match K1 to K1, See Figure 23)

24



Insert and snap lock the right hand pole into the right arm curved pole. (Match L1 to L1, See Figure 24)

25



Thread one rope in the sleeve through the ziptie on the hand and tie them together to fasten the sleeve. (See Figure 25)

26



Thread the wire of the head through the shoulder frame to the body inside. (See Figure 26)

27



Insert and snap lock the head into the shoulder frame. (Match M to M, See Figure 27)

28



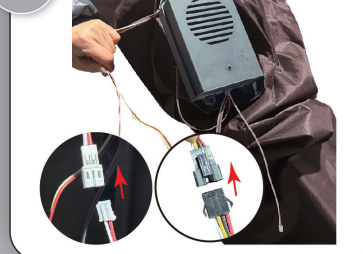
Tie the last two ropes together on the shoulder frame to cover the shoulder frame. (See Figure 28)

29



Pull the wires out through the body. (See Figure 29)

30



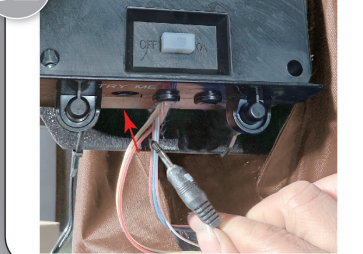
Connect the wires pulling out of the body to the corresponding wires of the control box. (See Figure 30)

31



Attaching the hook and loop from the control box to the inside right knee. (See Figure 31)

32



Plug the tryme button into the corresponding hole of the control box. (See Figure 32)

33



Plug the adapter into the corresponding hole of the control box. (See Figure 33)

34



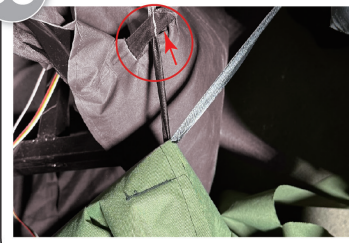
Thread the tryme button and the adapter through the hole on the right knee and put them on the ground. (See Figure 34)

35



Attaching the loop and hook on the right knee to cover the hole. (See Figure 35)

36



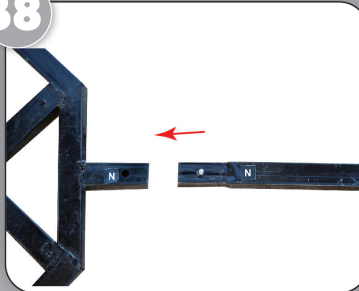
Thread one rope on both side of the shirt into the loop on both side of the pants and tie up to fasten the costume. (See Figure 36)

37



Stand entire frame upright, make sure one person in the front and put one foot on the base to keep it from sliding forward. Assistance must be needed. (See Figure 37)

38



Insert and snap lock the base poles into the base. (Match N to N, See Figure 38)

39



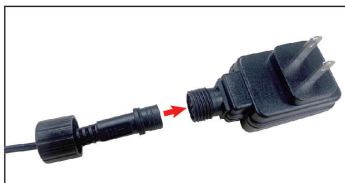
Pull the 4 tether lines out and fasten them to the stakes, and secure the ground stakes by inserting them into the ground. (See Figure 39)

40

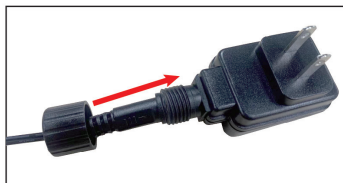


Make final adjustment to clothing, as needed. (See Figure 40)

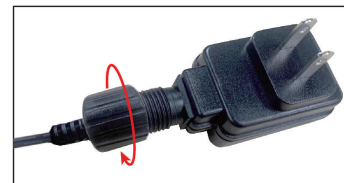
NOTE:



1. Assemble plug end of adapter by inserting cord.



2. Sliding collar forward.



3. Turn collar clock-wise to secure.

OPERATIONS INSTRUCTIONS

1. Plug the Power Adapter into a standard power outlet and adjust the settings on the Function Control Box to your liking.
2. This character has 3 operation settings which can be found on the main Function Control Box on the Middle Leg Pole:
 - Sensor: This switch mode will activate lights, sound, and animation when the Infra-red(IR)sensor is activated and will operate for 1 audio-cycle with each activation.The infra-red(IR) sensor has a range of up to 2m/6.5ft.and will activate when someone comes within an 80-degree angle from left-to-right,as well as from above and below.
 - On: This switch mode will continuously operate the lights, sound,and animation of the item.
 - Off/Try Me: This switch mode allows the item to be activated only if triggered by using the Try Me Button(Included). The item will operate for one audio cycle with each Try Me activation.Refer to Assembly Instruction in Step 32 for further details.



- " - + " Volume: Raise or lower the volume using the volume control turn dial,turn all the way down to turn the volume off.

STORAGE

Do not discard box as it should be used for storage.

Return all parts to the original packaging. Store in a cool, dry location.

SAFETY WARNINGS

Remove all plastic fasteners and tags. These are part of the packaging and should be discarded.

For indoor and outdoor use. This item is not a toy and should be used for decorative purposes only.

Input: 100~240V 50/60Hz 0.5A MAX Output: 5.9V \pm 1.5A



WARNING

This device complies with Part 15 of the FCC Rules. Operation is subject to the following two conditions:

- (1) this device may not cause interference
- (2) this device must accept any interference, including interference that may cause undesired operation of the device.

CAUTION: Change or modifications not expressly approved by the party responsible for compliance could void the user's authority to operate the equipment.

NOTE: This equipment has been tested and found to comply with the limits or a Class B digital device, pursuant to Part 15 of the FCC Rules.

These limits are designed to provide reasonable protection against harmful interference in a residential installation. This equipment generates, uses, and can radiate radio frequency energy and, if not installed and used in accordance with the instructions, may cause harmful interference to radio communications. However, there is no guarantee that interference will not occur in a particular installation. If this equipment does cause harmful interference to radio or television reception, which can be determined by turning the equipment off and on, the user is encouraged to try to correct the interference by one or more of the following measures:

- Reorient or relocate the receiving antenna.
- Increase the distance between the equipment and receiver.
- Connect the equipment into an outlet on a circuit different from that to which the receiver is connected.
- Consult the dealer or an experienced radio/TV technician for help.



WARNING:

1. This product is for indoor or covered outdoor use only. Do not place in direct sunlight.
2. This product is for decoration only and is not a toy. Please use caution with children under the age of 8.
3. Do not position the decoration near candles, sources of heat, or in direct sunlight.
4. The decoration cannot be connected to the power supply directly.
5. Decoration should be on a level, stable surface to prevent it from falling over.
6. This product is fragile and should be assembled with care.
7. Please follow the steps and requirements specified in the instruction to ensure safety and reliability during the installation.

Storage tips: We suggest saving the carton for storing your figurine. Store in a cool, dry area where the temperature does not exceed 100°F.

www.HauntedHillFarm.com

1-YEAR LIMITED WARRANTY

"Limited" Warranty Program

For a period of one (1) year after purchase, Haunted Hill Farm ("Manufacturer") will either repair or replace defective components in accordance with this Limited Warranty.

Sales and use taxes, plus shipping and handling charges are the responsibility of the consumer.

This warranty is between Manufacturer and the original purchaser and is valid only when accompanied by the original purchaser's sales receipt showing original date of purchase and location of purchase. Replacements under this warranty revert back to the date of original purchase for future warranty.

Manufacturer or its authorized dealer can accept or reject warranty claims based on its findings. This warranty applies in normal residential use only, where an issue with the product is due to a defect in material or workmanship. Manufacturer can make substitutions as required of materials, components, and sub-components of comparable value and utility. This warranty is limited to product repair or replacement (to be determined solely by Manufacturer). Warranty return is limited to only the single affected component.

This warranty covers only manufacturing defects and does not cover normal wear and tear, abuse or misuse, including: water damage, chemical damage, exposure to extreme heat or cold, abrasion or excessive weight. This product is intended to be used with standard ornaments only. This warranty is invalid if the product is not used for intended purpose. Manufacturer disclaims liability for any aspect of installation and any inconvenience caused by a defective part or component.

Certain items are not covered by this warranty. These include, but are not limited to the following:

1. Components subjected to abuse, including abuse intended to simulate failure.
2. Damages caused by retailer, shipper or installation crew (such as scratches, dents, tears, etc.).
3. Any part which merely exhibits normal wear yet functions essentially as new, including stretching of materials and stitching.
4. Tears, punctures, scratches or any damage caused by improper installation or use.
5. Items sold "as is" or floor models.

To make a claim, send a copy of the original sales receipt along with a brief description of the problem to the email address below. Please include your email address and daytime telephone or cell phone #. All items maybe charged actual freight and handling costs. Repairs or replacement will be made at the Manufacturer's option.

THIS IS THE ENTIRE EXCLUSIVE EXPRESS LIMITED LIABILITY. THE MANUFACTURER NEITHER MAKES NOR IS RESPONSIBLE FOR ANY OTHER WARRANTIES, EITHER EXPRESS OR IMPLIED, INCLUDING THOSE OF RETAILING DEALERS. THIS EXCLUSIVE REMEDY IS LIMITED TO RECEIPT OF A CREDIT IN CONNECTION WITH THE REPAIR OR REPLACEMENT OF ANY PRODUCT OR COMPONENT DEEMED TO BE DEFECTIVE UNDER THE TERMS AND CONDITIONS AS STATED IN THIS WARRANTY. NEITHER HAUNTED HILL FARM, THE PRODUCT MANUFACTURER NOR ITS AGENTS SHALL BE LIABLE IN ANY CASE FOR INCIDENTAL, INDIRECT, SPECIAL OR CONSEQUENTIAL DAMAGES RESULTING FROM THE USE OF THIS PRODUCT OR ARISING OUT OF ANY BREACH OF THIS WARRANTY OR NEGLIGENCE EVEN IF IT HAS BEEN ADVISED OF THE POSSIBILITY OF SUCH DAMAGES. EXCEPT AS OTHERWISE MAY BE REQUIRED BY LAW, THERE ARE NO OTHER EXPRESS OR IMPLIED WARRANTIES OTHER THAN THE WARRANTY DESCRIBED HEREIN, AND ALL OTHER WARRANTIES, INCLUDING ANY IMPLIED WARRANTY OF MERCHANTABILITY OR FITNESS FOR A PARTICULAR PURPOSE ARE EXPRESSLY DISCLAIMED.

Boo@HauntedHillFarm.com