

EXTREME RANGE TARGET HOUND®



Paper targets



Hang steel

WARRANTY AND DISCLAIMERS

HYSKORE®/Power Aisle, Inc. guarantees that its products are free from defects in material and workmanship for a period of 90 days from the original date of purchase. This Warranty applies to non-commercial use only. Commercial use voids this warranty. In the event of any defects in material or workmanship, HYSKORE®/Power Aisle, Inc.'s sole liability therefore shall be the replacement of any such product(s) and/or components that are defective in material or workmanship. The replacement of any such product(s) and/or components shall be HYSKORE®/Power Aisle, Inc.'s sole responsibility. This warranty specifically excludes any and all consequential or accidental damages. No other warranties or liabilities whatsoever are either expressed or implied. If any such warranties shall be imposed by law, notwithstanding this provision, then such warranties shall be the responsibility of HYSKORE®/Power Aisle, Inc.'s immediate buyer. There shall be no warranties of merchantability, use of trade, or fitness for a particular purpose. Alteration of any product, misuse, or exceeding any stated product limitations voids this warranty. All returns, adjustments, etc. are the responsibility of the retailer/dealer that sold the product. HYSKORE®/Power Aisle, Inc. handles return issues through it's dealers. It should be obvious when using some of these products that approved protective safety gear, including, but not limited to, eye and ear protection, should be utilized. Using the appropriate safety gear is the sole responsibility of the person(s) using the product. It should also be obvious that certain products such as silica gel, etc. must not be consumed, inhaled or taken internally. The user takes full responsibility for inappropriate or incorrect use of these items. In the event an inadvertent event takes place, Material Safety Data Sheets (MSDS) are available on the HYSKORE® website. www.hyskore.com. We do not sell guns, scopes, ammunition, cleaning accessories, etc. These accessories are used in many of our product pictures, as props to illustrate how the products are used. As such, they are not included with any product. All photographs, drawings, copy, instructions, etc. are the exclusive property of HYSKORE®/Power Aisle, Inc. All downloadable files are intended for the use of the end user of HYSKORE®/Power Aisle, Inc.'s products and cannot be reproduced without the express written permission of HYSKORE®/Power Aisle, Inc. ©2020



Set up for paper targets



Set up for steel targets

Setting out F class targets at 600, 800 or 1000 yards or setting out even larger targets at more distant ranges out to 1500 and 2000 yards prevents numerous challenges because the support system for the target usually involves some type of construction, which means that the shooter must set up at a known firing point, and the targets need to be set up at a known distance using some type of construction to properly build, secure, and anchor the target support system. In other words, you can't just drive out into the country then set up your bench and conveniently fire at targets 1000 yards away.

In the course of shipping and packing, parts may end up missing or damaged-
Call us at 631.673.5975. 8:30 a.m. - 5:00 p.m. Eastern Time. We will promptly send replacements.

Always wear appropriate vision and hearing protection when using this product!

Introduction

The HYSKORE® Extreme Range Target Hound® changes all that. Using simple and inexpensive material readily available at Lowes, Home Depot, Menards, etc. The Extreme Range Target Hound® sets up a solid, stable target support base in as little as a five minutes. It's simply a matter of purchasing lengths of readily available EMT electrical conduit in 1 inch diameter and either 2x4's or 1x2's and you're ready to begin the setup process. The set consists of a left hand and a right hand bracket with deep sockets that readily accept the 1 inch EMT, and additional sockets that readily accept either 2x4" or as 1x2" dimensional lumber. The only other thing is that the shooter needs to supply is a piece of plywood and/or a piece of corrugated cardboard for the target backer and of course, the appropriate tools.

One thing that you will notice is that the sockets for the 2"x4" and 1"x2" lumber are slightly oversized. We all know that if you go to Home Depot, Lowe's, or Menards and purchase a 2"x4", it is going to measure 1.5" x 3.5". You also probably realize that calculating your elevation/vertical shot dispersion is purely a matter of physics. Calculating your horizontal shot dispersion/windage is a whole different ball game. Quite frankly it is more a matter of art than science, particularly since as the range increases the probability of encountering various wind values between the muzzle and the target increases. In other words, you are probably going to shoot out the uprights sooner rather than later. This means that most experienced shooters will probably want to use scrap or rough cut lumber. Rough cut lumber, which is commonly available in rural areas, is typically true 2"x4", and scrap lumber, which has been left out in the weather and has become wet, will typically swell. If the sockets were formed to even slightly larger than 1.5"x3.5", the rough cut lumber and the wet lumber would not fit. Trying to trim or squeeze the oversized lumber into the sockets would present a far greater challenge than adding some sort of shim, newspaper, cardboard, wood, etc. and/or using 6-8 screws to solidly secure the uprights. Going beyond that, had the sockets been made to the exact 1.5"x3.5" for a new kiln dried 2"x4" and the Target Hound with the uprights been left in the rain for any period of time, you would encounter extreme difficulty in trying to extract the now swollen uprights from the sockets. It is with these thoughts in mind that we made the sockets slightly oversized.

What's in the box:



Left & Right Hand Brackets



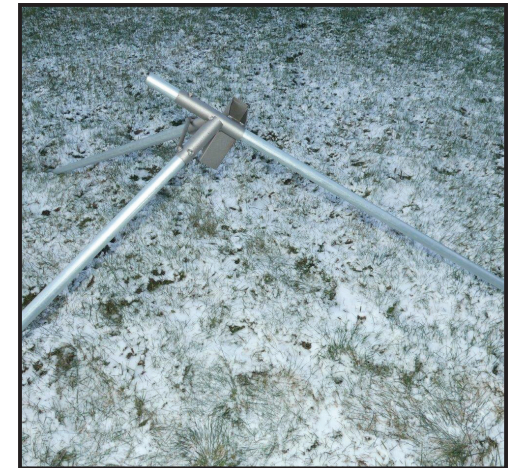
- 14 - M-8 X 20mm Bolts
- 6 - M-8 X 60mm Bolts
- 6 - M-8 Hex Nuts

What you need to supply:

- A. 1" EMT electrical conduit cut to length
- B. adjustable wrench or 13 mm wrench
- C. 2 X 4" or 1 X 2" lumber
- D. target backer board either cardboard or plywood
- E. targets



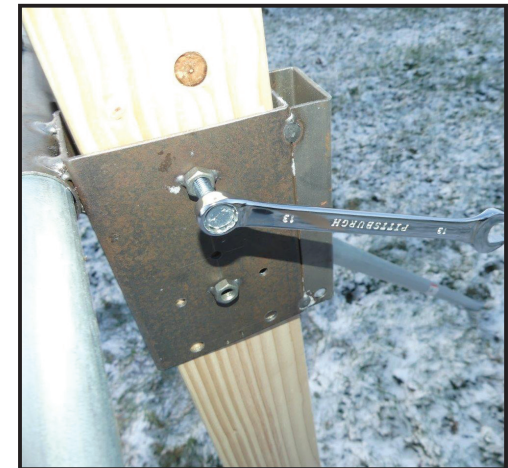
Attach legs to either right or left bracket



Attach lateral



Attach other bracket and legs



Insert wood uprights (or hang steel) if desired. Use a 13 mm wrench to secure wood or EMT.

The 60mm bolts and nuts can be put through the holes at the bottom of the sockets to prevent the uprights from going through.