



#### ACTIVATE YOUR WARRANTY

by registering your product:  
[championpowerequipment.com](http://championpowerequipment.com)

SERIAL NO.



1-877-338-0999

or visit [championpowerequipment.com](http://championpowerequipment.com)

**READ AND SAVE THIS MANUAL.** This manual contains important safety precautions which should be read and understood before operating the product. Failure to do so could result in serious injury. This manual should remain with the product.

Specifications, descriptions and illustrations in this manual are as accurate as known at the time of publication, but are subject to change without notice.

**TABLE OF CONTENTS**

<b>Introduction</b> .....	<b>3</b>	<b>Suggested Accessories</b> .....	<b>12</b>
<b>Safety Definitions</b> .....	<b>3</b>	<b>Maintenance</b> .....	<b>12</b>
<b>Important Safety Instructions</b> .....	<b>4</b>	Cable/Rope Replacement .....	12
Operation Symbols .....	5	System Reset .....	14
<b>Controls and Features</b> .....	<b>6</b>	<b>Specifications</b> .....	<b>16</b>
Winch .....	6	Performance Specifications .....	16
Parts Included .....	7	Duty Cycle Ratings .....	16
<b>Assembly</b> .....	<b>8</b>	<b>Troubleshooting</b> .....	<b>17</b>
Assembling the Winch .....	8		
<b>Operation</b> .....	<b>8</b>		
General Tips for Safe Operation .....	10		
Self Recovery .....	10		
Cable/Rope Abrasion Sleeve .....	11		
Winching Techniques A-Y .....	11		

** FOR PARTS BREAKDOWN**

Search by model number at  
[championpowerequipment.com](http://championpowerequipment.com)

## INTRODUCTION

Congratulations on your purchase of a Champion Power Equipment (CPE) product. CPE designs, builds, and supports all of our products to strict specifications and guidelines. With proper product knowledge, safe use, and regular maintenance, this product should bring years of satisfying service.

Every effort has been made to ensure the accuracy and completeness of the information in this manual at the time of publication, and we reserve the right to change, alter and/or improve the product and this document at any time without prior notice.

Since CPE highly values how our products are designed, manufactured, operated and are serviced, and also highly value your safety and the safety of others, we would like you to take the time to review this product manual and other product materials thoroughly and be fully aware and knowledgeable of the assembly, operation, dangers and maintenance of the product before use. Fully familiarize yourself, and make sure others who plan on operating the product fully familiarize themselves too, with the proper safety and operation procedures before each use. Please always exercise common sense and always err on the side of caution when operating the product to ensure no accident, property damage, or injury occurs. We want you to continue to use and be satisfied with your CPE product for years to come.

When contacting CPE about parts and/or service, you will need to supply the complete model and serial numbers of your product. Transcribe the information found on your product's nameplate label to the table below

### CPE TECHNICAL SUPPORT TEAM

1-877-338-0999

### MODEL NUMBER

201371

### SERIAL NUMBER

### DATE OF PURCHASE

### PURCHASE LOCATION

## SAFETY DEFINITIONS

The purpose of safety symbols is to attract your attention to possible dangers. The safety symbols, and their explanations, deserve your careful attention and understanding. The safety warnings do not by themselves eliminate any danger. The instructions or warnings they give are not substitutes for proper accident prevention measures.

### DANGER

DANGER indicates a hazardous situation which, if not avoided, will result in death or serious injury.

### WARNING

WARNING indicates a hazardous situation which, if not avoided, could result in death or serious injury.

### CAUTION

CAUTION indicates a hazardous situation which, if not avoided, could result in minor or moderate injury.

### NOTICE

NOTICE indicates information considered important, but not hazard-related (e.g., messages relating to property damage).

# IMPORTANT SAFETY INSTRUCTIONS

## ⚠ WARNING

Cancer and Reproductive Harm –  
[www.P65Warnings.ca.gov](http://www.P65Warnings.ca.gov)

## ⚠ WARNING

Never use this winch for lifting or moving people or animals.

Never step over the cable/rope when operating under load.

Always maintain a safe distance to the opposite side of the cable/rope when operating under load.

## ⚠ WARNING

Never exceed the rated capacity.

Always be aware that the cable/rope under load may break before the motor stalls.

Always use a snatch block to reduce the load on the cable/rope for heavy loads at or near rated capacity.

## ⚠ WARNING

Never use the winch to secure or hold a vehicle for an extended period of time.

Always apply stop blocks to the wheels of the vehicle when on an incline.

Do not use the winch to secure a vehicle for transporting purposes.

Never move the vehicle to pull a load (towing) when operating the winch cable/rope.

## ⚠ WARNING

Disconnect the power supply cord when not in use.

## ⚠ WARNING

Avoid “shock loads” by using the control switch intermittently to take up the slack in the cable/rope. “Shock loads” can exceed the rated capacity of the cable/rope and drum.

## ⚠ CAUTION

Always use a winch hook strap when handling the hook for spooling or unspooling the cable/rope.

## ⚠ CAUTION

Always use gloves to protect hands when handling the cable/rope. Never let the cable/rope slide through your hands.

## ⚠ WARNING

When re-spooling the cable/rope, ensure that it spools in the under-wind position with the cable/rope entering the drum from the bottom, not the top.

To re-spool correctly, and while wearing gloves, keep a slight load on the cable/rope while pushing the IN button to draw in the cable/rope. Walk toward the winch not allowing the cable to slide through your hands. Do not let your hands get within 12 inches (30 cm) of the winch while re-spooling. Turn off the winch and repeat the procedure until a few feet of cable/rope are left. Keep hands clear of the fairlead and drum while the winch is under power.

## ⚠ CAUTION

Never wrap the cable/rope around any object and hook it back onto itself.

## ⚠ CAUTION

Operating duration of winching pulls should be kept as short as possible.

If the motor becomes excessively hot to the touch, stop winching immediately and let it cool down for a few minutes. Do not pull for more than one minute at or near the rated load.

## ⚠ CAUTION

Never maintain power to the winch if the motor stalls.

This electric winch is designed and made for short duty use and should not be used in constant duty applications. See *Duty Cycle Ratings* section in the back of this manual for more information.

**GROUND FAULT CIRCUIT INTERRUPTER PROTECTION**


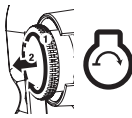

This winch is provided with a ground fault circuit interrupter (GFCI) built into the plug of the power supply cord. This device provides additional protection from the risk of electric shock. Should replacement of the plug or cord become necessary, use only identical replacement parts that include GFCI protection.

**EXTENSION CORDS**

Use only extension cords that are intended for outdoor use. These extension cords are identified by a marking "Acceptable for use with outdoor appliances; store indoors while not in use." Use only extension cords having an electrical rating not less than the rating of the product. Do not use damaged extension cords. Examine extension cord before using and replace if damaged. Do not abuse extension cord and do not yank on any cord to disconnect. Keep cord away from heat and sharp edges. Always disconnect the extension cord from the receptacle before disconnecting the product from the extension cord. Always plug the extension cord into a GFCI protected outlet. To avoid the possibility of the plug getting wet when using an extension cord, arrange a "drip loop" in the cord connecting the winch to the extension cord. The "drip loop" is that part of the cord below the level of the connector which prevents water travelling along the cord and coming in contact with the connection. If the plug does get wet, DO NOT unplug the cord. Disconnect the fuse or circuit breaker that supplies power to the tool, then unplug and examine for presence of water in the connection.

**Operation Symbols**

Some of the following symbols may be used on this product. Please study them and learn their meaning. Proper interpretation of these symbols will allow you to safely operate the product.

Symbol	Meaning
	Emergency Stop button
	Emergency Stop button "ON": Rotate clockwise until the button pops out to activate or start the winch.
	Emergency Stop button "OFF": Press in to deactivate or stop the winch.

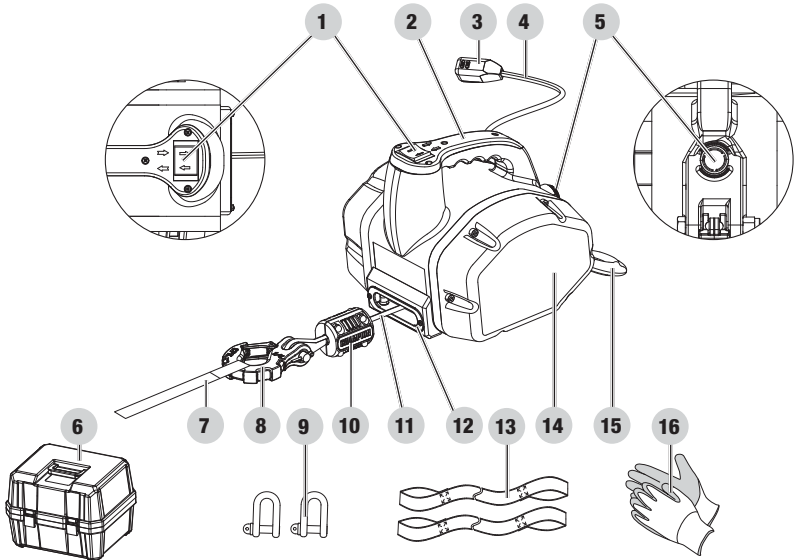
**⚠ WARNING**

To reduce the risk of electrocution, keep all connections dry and off the ground. Never touch plug with wet hands.

## CONTROLS AND FEATURES

Read this operator's manual before operating your winch. Familiarize yourself with the location and function of the controls and features. Save this manual for future reference.









### Winch



1. **IN/OUT** – Used to retract or extend wire cable.
2. **Carrying Handle** – used to grip winch during operation or carry for storage.
3. **GFCI** – This winch is provided with a ground fault circuit interrupter (GFCI) built into the plug of the power supply cord. This device provides additional protection from the risk of electric shock.
4. **Power Cord** – 3 ft. 3 in. (1 m) with built in GFCI.
5. **Emergency Stop Button** – Activates or deactivates the winch operation.
6. **Carrying Case** – Used to store and transport the winch and accessories.
7. **Hand Saver/Strap** – Used to assist cable/rope feed.
8. **Clevis Hook** – Provides a means for connecting the cable/rope to an intended pull load.
9. **D-shackles** – A pair (2) of 7/16" shackles rated to 1.4 tons - Provides a means for connecting the looped ends of winch cable or rope, straps and snatch blocks.
10. **Cable Hook Stopper** – Prevents the clevis hook from completely going into the winch.
11. **Cable/Rope** – 3/16 in. x 15 ft. (4.8 mm x 4.6 m) galvanized aircraft cable designed specifically for load capacity of 1,100 lb. (500 kg).
12. **Roller + Hawse Combo** – When using the winch at an angle the hawse acts to guide the cable onto the drum and minimizes damage to the cable from abrasion on the winch mount or bumper.
13. **Tree anchor or tow straps** – A pair (2) of 2" X 8' straps rated to 8,800 lbs. Use along with a clevis or D-shackle to secure the winch cable/rope to a wide variety of anchor points and objects. This strap is designed to help protect living trees from the kind of damage a choker chain or wire rope might cause.
14. **Motor** – 1.0 HP / 0.75 kW 120V AC motor provides power to the gear mechanism.
15. **Anchor Clevis Hook** – Provides a means for anchoring the winch during operation.
16. **Utility gloves** – A pair (2) of utility gloves.

## Parts Included

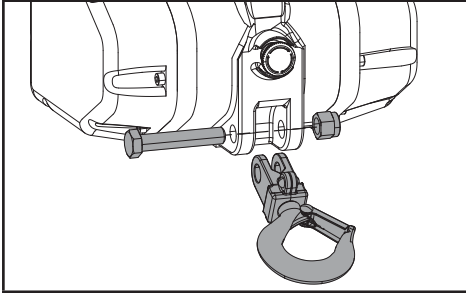
### Assembly Parts

Part		Part Qty	Hardware	Hardware Qty	Tool(s) Needed	Torque lbf-ft (N.m)
Winch		1				
Carrying Case		1				
D-Shackles		2				
Tree Savers		2				
Clevis Hook		1			Needle nose pliers	
Anchor Clevis Hook		1	Hexagon Head Bolt M12 x 65	1	1x 19mm wrench or socket	57.5-76.7 (78-104)
			Lock Nut M12	1	1x 19mm wrench or socket	
Hand Saver/Strap		1				
Gloves (Pair)		2				

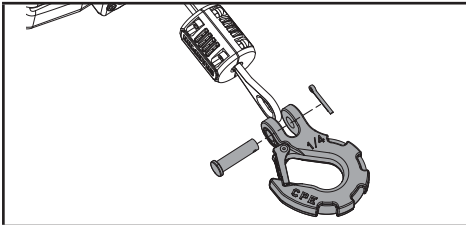
## ASSEMBLY

### Assembling the Winch

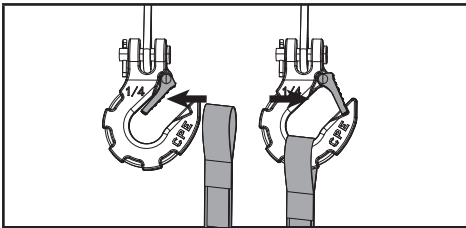
1. Insert M12×65 bolt through the channel hole below the EMERGENCY STOP button and assemble with the M12 lock nut provided. Tighten the bolt and nut. **DO NOT** over tighten.



2. Assemble clevis hook to cable/rope with the bolt and cotter pin. After cotter pin is inserted, bend the two arms of the cotter pin with a pair of needle nose pliers to ensure a secure fit.



3. Attach the hand strap to the clevis hook.



## OPERATION

### ⚠ WARNING

Read and understand this operator's manual before operating your winch.

### ⚠ DANGER

Always use this product in a safe location and clear bystanders away from cable/rope and winch before use. Always ensure a competent winch handler is at the controls.

### ⚠ WARNING

Always wear gloves and eye protection when operating winch.

### GROUND FAULT CIRCUIT INTERRUPTER PROTECTION

This winch is provided with a ground fault circuit interrupter (GFCI) built into the plug of the power supply cord. This device provides additional protection from the risk of electric shock. Should replacement of the plug or cord become necessary, use only identical replacement parts that include GFCI protection.

### EXTENSION CORDS

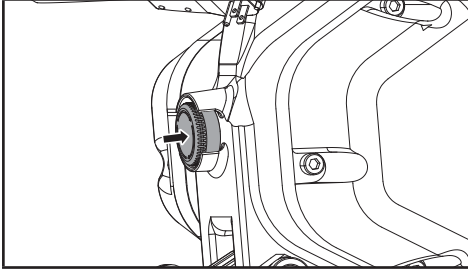
Use only extension cords that are intended for outdoor use. These extension cords are identified by a marking "Acceptable for use with outdoor appliances; store indoors while not in use." Use only extension cords having an electrical rating not less than the rating of the winch. Do not use damaged extension cords. Examine extension cord before using and replace if damaged. Do not abuse extension cord and do not yank on any cord to disconnect. Keep cord away from heat and sharp edges. Always disconnect the extension cord from the receptacle before disconnecting the product from the extension cord. Always plug the extension cord into a GFCI protected outlet. To avoid the possibility of the plug getting wet when using an extension cord, arrange a "drip loop" in the cord connecting the winch to the extension cord. The "drip loop" is that part of the cord below the level of the connector which prevents water travelling along the cord and coming in contact with the connection. If the plug does get wet, **DO NOT** unplug the cord. Disconnect the fuse or circuit breaker that supplies power to the winch, then unplug and examine for presence of water in the connection.



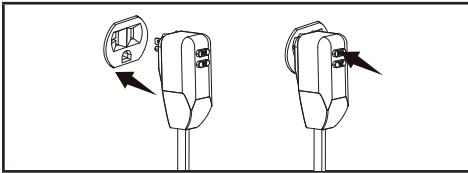
**⚠ WARNING**

To reduce the risk of electrocution, keep all connections dry and off the ground. Never touch plug with wet hands.

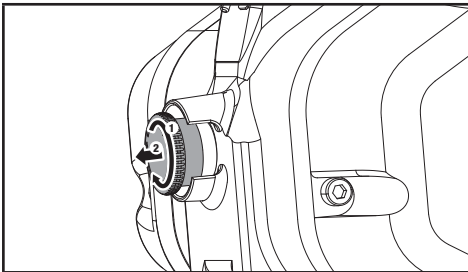
1. Press “IN” to deactivate or “STOP” the winch operation.



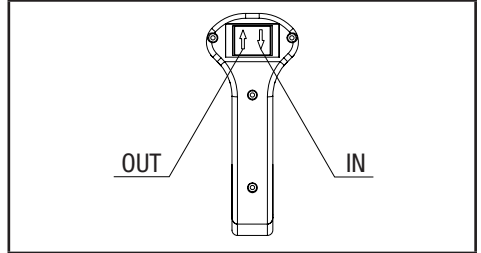
2. Plug in the GFCI power supply cord and press the RESET button.



3. Securely connect the anchor clevis hook and clevis hook. Always use a suitable anchor point capable of withstanding your intended load.
4. Rotate clockwise until the EMERGENCY STOP button pops “OUT” to activate or start the winch.



5. Operate winch by pressing “OUT” for at least 5 seconds to release cable (or 3 ft. (1 m) of cable/rope has extended from drum). Unspool cable/rope as needed, but only until you see red paint indicating a minimum wrap on the drum. Do not unspool past this point. 5 wraps of cable/rope must be kept on the drum at all times.

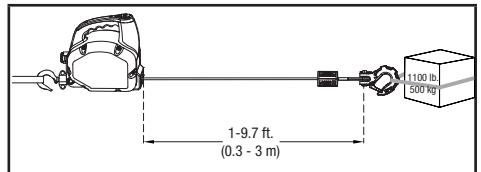


6. When winching, ensure the cable/rope is wrapping the drum in an orderly fashion. If mis-wrapped, unspool, adjust unit so that it is perpendicular to load, and spool again.
7. When winching is complete, push the red EMERGENCY STOP button and unplug unit.

**⚠ CAUTION**

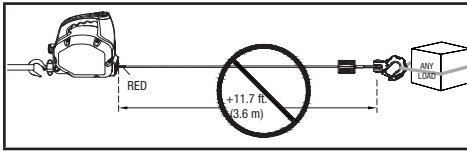
This winch features an automatic stoppage of cable/rope in or out when the limit of safe operation is detected.

- During cable-in, the winch will automatically stop when reaching maximum safe cable wrap on the drum, allowing only winch-out operation.
- During cable-out operation, the winch will automatically stop spooling out cable/rope when it reaches maximum safe extension. At this point, only IN will be possible.



**⚠ WARNING**

Always keep the winch and pulling load in sight during pulling operation.



### **⚠ WARNING**

Never spool out past the red paint on wire rope.

## General Tips for Safe Operation

Your winch is rated at a 1100 lb. (500 kg) capacity. Overloads can damage the winch, motor and/or cable/rope. For loads over 550 lb. (250 kg) we recommend the use of the pulley block/snatch block to double the cable/rope line. This will aid in two ways:

- reduce the number of cable/rope layers on the drum, as well as,
- reduce the load on the cable/rope by as much as 50%.

When doubling the line back to the vehicle, attach to the tow hook, frame or other load bearing part.

Get to know your winch before you actually need to use it. We recommend that you set up a few test runs to familiarize yourself with rigging techniques, the sounds your winch makes under various loads, the way the cable/rope spools on the drum, etc.

Inspect the cable/rope and equipment before each use. A frayed or damaged cable/rope shall be replaced immediately. Use only manufacturer's identical replacement cable/rope with the exact specifications.

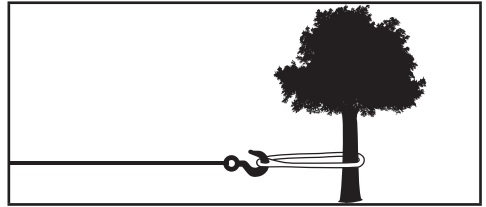
Inspect the winch installation and bolts to ensure that all bolts are tight before each operation. Store the remote control inside your vehicle in a place that it will not be damaged.

Any winch that appears to be damaged in any way, is found to be worn, or operates abnormally **MUST BE REMOVED FROM SERVICE UNTIL REPAIRED**. It is recommended that the necessary repairs be made by a manufacturer's authorized repair facility.

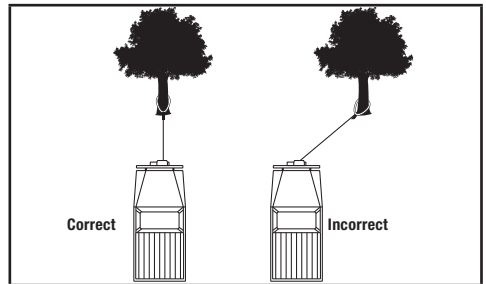
Pull only on areas of the vehicle as specified by the vehicle manufacturer. Only attachments and/or adapters supplied by the manufacturer are to be used.

## Self Recovery

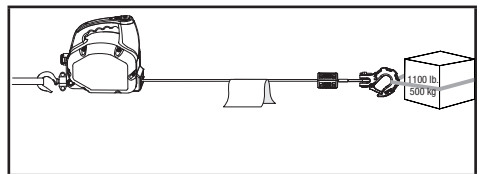
Locate a suitable anchor such as a strong tree trunk or boulder. Always use a sling as an anchor point.



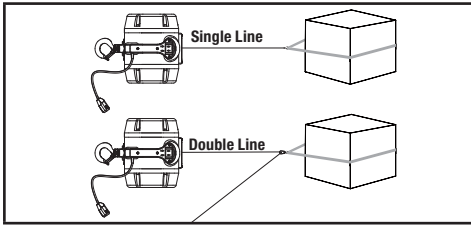
Your winch is equipped with a combination roller hawse to help guide the cable/rope and to reduce binding on short side pulls. Do not winch from an acute angle as the cable/rope will pile up on one side of the drum causing damage to cable/rope and the winch.



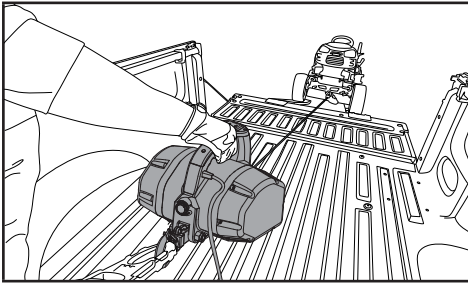
Short pulls from an angle can be used to straighten the vehicle. Long pulls should be done with the cable/rope at a 90° angle to the winch/vehicle. When pulling a heavy load, place a blanket or jacket over the cable/rope five or six feet from the hook.



In the event of a broken cable, it will dampen the snap back. For additional protection open the hood of the vehicle. For pulls over 550 lb. (250 kg), we recommend the use of the snatch block/pulley block to double line the cable/rope.



This reduces the load on the winch and the strain on the cable/rope by approximately 50%.



## Cable/Rope Abrasion Sleeve

The winch should be set up to avoid any rough surface from contacting the cable/rope. If that is not possible, the abrasion sleeve can be used to help protect the cable/rope.

## Winching Techniques A-X

- A. Take time to assess your situation and plan your pull.
- B. Put on gloves to protect your hands.
- C. Attach the hook strap to the clevis hook.
- D. Power OUT the cable/rope to your desired anchor point using the hook strap.
- E. Secure the clevis hook to the anchor point: sling, chain or snatch block. Do not attach the clevis hook back onto the cable/rope.
- F. Use tree saver to attach the anchor clevis hook to a suitable point, like trailer head or tree base.
- G. This winch is provided with a ground fault circuit interrupter (GFCI) built into the plug of the power supply cord. This device provides additional protection from the risk of electric shock. Plug into a 120V AC circuit and press RESET.
- H. Drape a blanket or jacket over the cable/rope approximately 5 to 6 feet from the hook. Open the hood for added protection.
- I. Power in the cable/rope guiding the cable/rope under tension to draw up the slack in the cable/rope. Once the cable/rope is under tension, stand clear. Never step over the cable/rope.
- J. Double check your anchors and make sure all connections are secure.
- K. Inspect the cable/rope.
- L. Clear the area. Make sure all spectators stand clear and that no one is directly in front or behind the vehicle, load or anchor point.
- M. Begin winching. Be sure that the cable/rope is winding evenly and tightly around the drum. Avoid shock loads; keep the cable/rope under tension.
- N. The vehicle to be winched should be placed in neutral and the emergency brake released. Only release the brake pedal when under full tension, if applicable. Avoid shock loads to the winch. This can damage the winch, cable/rope and vehicle.
- O. The winch is meant for short duty use. Under full load with a single line do not power on for more than a minute without letting the motor cool down for 20 minutes and then resume the winching operation. See *Duty Cycle Ratings* section in the back of this manual for more information.
- P. The winching operation is complete once the load is on stable ground and is able to drive under its own power.
- Q. Secure the load. Be sure to set the brakes and place the vehicle in park, if applicable.
- R. Release the tension on the cable/rope. The winch is not meant to hold the load for long periods of time.
- S. Disconnect the cable/rope from the anchor. Disconnect the clevis hook from the load being pulled.
- T. Rewind the cable/rope. Make sure that any cable/rope already on the drum has spooled tightly and neatly. If not, draw out the cable/rope and re-spool from the point where the rope is tight.

- U. Keep your hands clear of the winch and hawse as the cable/rope is being drawn in.
- V. Secure the clevis hook and hook strap.
- W. Disconnect the winch by disconnecting the anchor clevis hook, clevis hook, unplug power supplier cord and store in a clean, dry place.
- X. Clean and inspect connections for next winching operation.

## SUGGESTED ACCESSORIES

### CAUTION

Any accessories to be used with your winch should be properly sized and rated. Always inspect these tools before each use for damage that could reduce their strength.

### Snatch Block (not included)

Useful to redirect loads, it's secret power lies in creating a mechanical advantage of a winch. When a winch line is run out to a block and back to a vehicle's anchor point, the pull force becomes 2x (while speed of recovery is halved).

### Tree Savers (included)

A tree saver is essential for connecting a cable/rope to almost any anchor point but is primarily designed to prevent damage to trees used as anchor points. The tree saver should be wrapped around the chosen tree or anchor point as low to the ground as possible and the two ends brought together and joined with a shackle. The shackle then becomes the recovery point to where the cable or extension strap or anchor clevis hook is joined.

### D-Shackles (included)

Only bow shackles or soft shackles that are load-rated should be used for vehicle recovery. Load ratings are visible on the shackle and will be in the form of WLL (working load limit) or SWL (safe working load). The shackles, or any other recovery equipment, used should be sized correctly for the winching task. Pack more than you need.

### Gloves (included)

A good pair of gloves are essential for working with steel cable and helpful for handling cable/rope. You never know who or what you'll run into on the trail and having a pair of gloves at the ready is ideal hand protection.

## MAINTENANCE

The owner/operator is responsible for all periodic maintenance.

### WARNING

Never operate a damaged or defective winch.

### WARNING

Improper maintenance will void your warranty.

Complete all scheduled maintenance in a timely manner. Correct any issue before operating the winch.

### NOTICE

For service or parts assistance, contact our technical support team at 1-877-338-0999

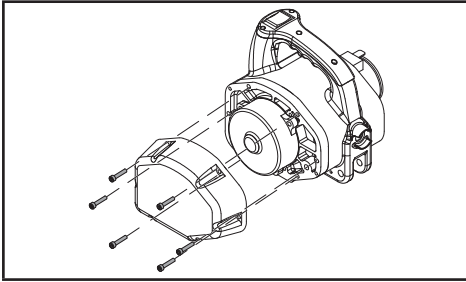
## Cable/Rope Replacement

### NOTICE

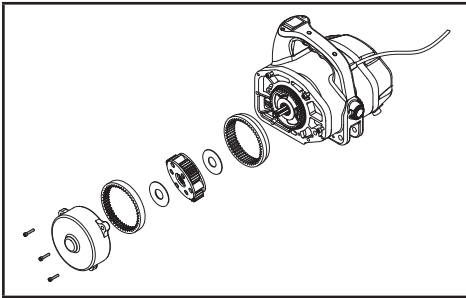
Always inspect cable/rope before and after each use. If the cable/rope becomes frayed, it must be replaced.

If your winch requires cable/rope replacement, it is critical to obtain factory-supplied replacement of exact size and length. This operation should only be performed by an experienced service technician.

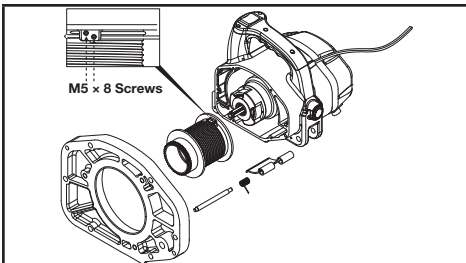
1. Disassemble the gearbox cover with hex key by removing M5 x 30 hex head bolts (6).



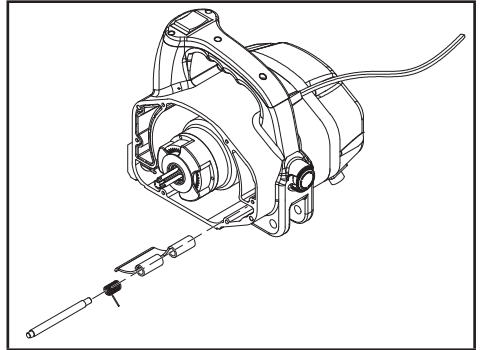
2. Remove the gearbox M6 x 25 screws (3) and remove gears from the gearbox.



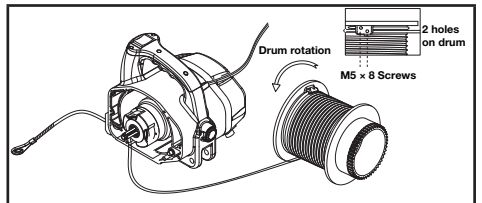
3. Remove the drum support plate, cable/rope tensioner and drum. Use a hex key to loosen the wire cable M5 x 8 screws (2) and remove cable/rope.



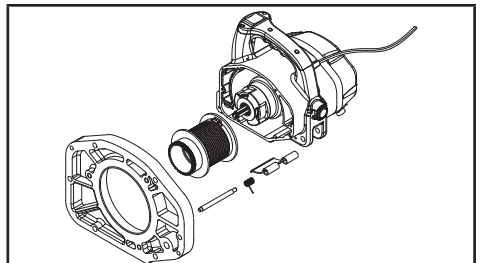
4. Reinstall the cable/rope tensioner to the main body, note the direction of the tensioner.



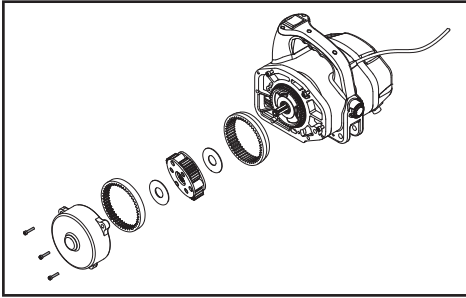
5. Install new cable/rope onto drum, noting direction of wrap. Feed the cable/rope end through the roller fairlead opening. The cable/rope beginning should be carefully secured with M5 x 8 screws (2) after a tight-close winding. Open the cable/rope tensioner and insert drum into the assembly. Ensure installation is correct by rotating drum and tensioner is pressing against cable.



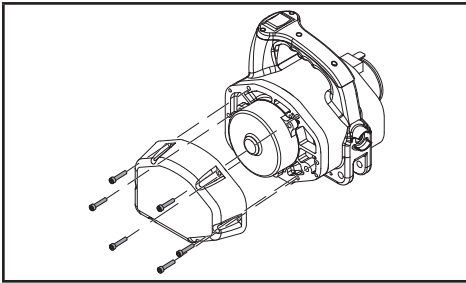
6. Remount the drum support plate to the main body.



7. Reassemble gear box assembly and cover with the gearbox M6 x 25 screws (3).



8. Reassemble the gearbox cover with M5 x 30 hex head bolts (6). Torque to 34 lbf-ft (46 N.m). DO NOT over tighten.



9. Once complete, perform a *System Reset*.

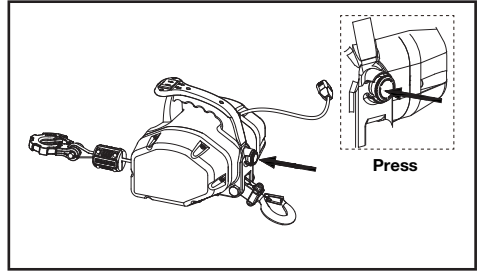
### System Reset

A system reset is required after replacing the wire cable or if troubleshooting has eliminated other issues. Performing these steps will reset the winch's ability to monitor cable extension for safety.

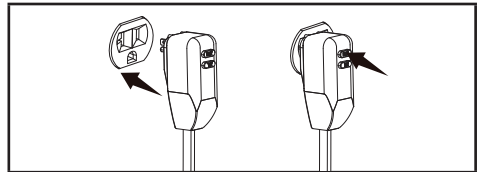
#### **⚠ DANGER**

The following procedure will cause the winch to retract cable/rope in automatically.

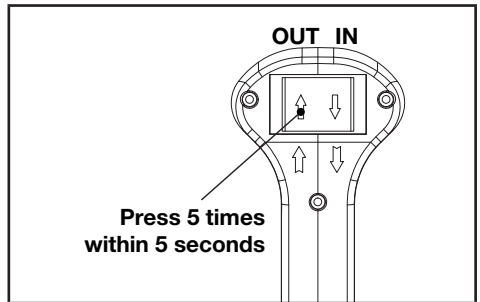
1. Make sure the red EMERGENCY STOP is in the "STOP" position or pressed in.



2. Plug in the GFCI power supply cord and press the RESET button.

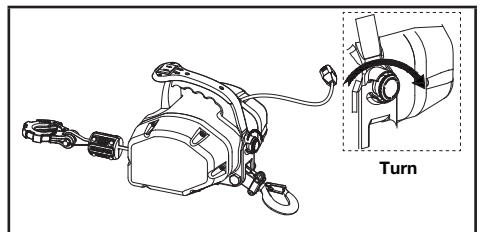


3. Press the OUT button 5 times within 5 seconds.

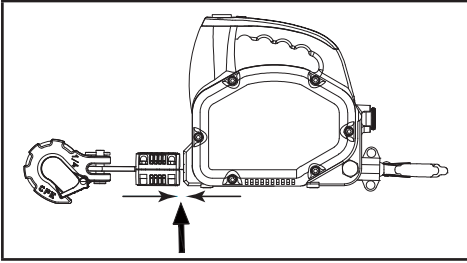


4. THIS STEP WILL ENGAGE WINCH IN AUTOMATICALLY.

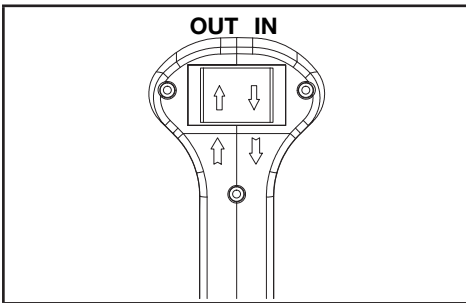
- 4a. Count 5 seconds, then turn the EMERGENCY STOP button until the button pops out. Keep hands away from hooks and cable.



- 4b. Winch will retract cable/rope until the cable hook stopper contacts the hawse. Once winch has stopped, the system reset is complete.



5. Confirm operation by pressing “OUT” for 10 seconds, then bringing the cable/rope back in with “IN”. Confirm operation is normal by testing “IN” and “OUT” a few times.



# SPECIFICATIONS

## Performance Specifications

Model .....	201371
Power .....	AC 110V-120V 60Hz
Rated Pull .....	1100 lb. (500 kg)
Gear Reduction Ratio .....	1636:1
Motor .....	Series wound motor 1.0 HP / 0.75 kW
Duty Cycle .....	Short Duty
Cable/Rope Type .....	Galvanized Steel
Cable/Rope Dimensions .....	15 ft. (L) × 3/16 in. (D) [4.6 m (L) × 4.8 mm (D)]
Speed (Minimum) .....	6.6 ft (2 m)
Net Weight .....	34.4 lb. (15.6 kg)
Height .....	8.3 in. (21 cm)
Width .....	8.1 in. (20.6 cm)
Length .....	9.4 in. (24 cm)

## Duty Cycle Ratings

Duty Cycle Ratings typically specify continuous, intermittent, or special duty (typically expressed in minutes). The IEC (International Electrotechnical Commission) lists the following ratings:

### S1 - Continuous duty

The motor works at a constant load for enough time to reach temperature equilibrium.

### S2 - Short-time duty

The motor works at a constant load, but not long enough to reach temperature equilibrium, and the rest periods are long enough for the motor to reach ambient temperature.

### S3 - Intermittent periodic duty

Sequential, identical run and rest cycles with constant load. Temperature equilibrium is never reached. Starting current has little effect on temperature rise.

This winch is considered S2, short-time duty. Please review this table showing how load affects run time.

### RUN TIME/DUTY CYCLE TABLE

LOAD	POWER ON	POWER OFF
550 lb.(250 kg)	2 minutes	20 minutes
1100 lb. (500 kg)	1 minute	20 minutes



# TROUBLESHOOTING

Problem	Cause	Solution
Winch will not operate.	Power not connected.	Plug in power supply.
	Emergency Stop Button is OFF.	Rotate the Emergency Stop Button clockwise until the button pops OUT to activate or start the winch.
	GFCI has tripped.	Reset GFCI.
	Motor too hot, needs cooling.	Wait 20 minutes and retry.
	Too heavy/overload.	Reduce load or use different tool.
	Winch not engaged.	Hold down the OUT button for 5 seconds.
	Cable/rope fully extended/ spooled.	Red paint is max cable-out /cable stop is max cable-in.
Wire cable is tangled.	If cable is pulled in at an angle, a tangle may occur. To prevent, always pull perpendicular to the unit.	To resolve, slowly feed out cable and rewind a better angle.
Wire cable damage.	Damaged cable/rope.	Replace cable/rope.
	Fairlead worn.	Replace fairlead.
Cable/rope won't extend, but will retract.	Cable/rope is at max extension or onboard computer needs reset.	Verify extension or perform System Reset.

### For further technical support:

Technical Support Team

Toll Free 1-877-338-0999

support@championpowerequipment.com

# WARRANTY\*

CHAMPION POWER EQUIPMENT  
2 YEAR LIMITED WARRANTY

## Warranty Qualifications

To register your product for warranty and FREE lifetime call center technical support please visit:

<https://www.championpowerequipment.com/register>

To complete registration you will need to include a copy of the purchase receipt as proof of original purchase. Proof of purchase is required for warranty service. Please register within ten (10) days from date of purchase.

## Repair/Replacement Warranty

CPE warrants to the original purchaser that the mechanical and electrical components will be free of defects in material and workmanship for a period of two years (parts and labor) from the original date of purchase and 180 days (parts and labor) for commercial and industrial use. Transportation charges on product submitted for repair or replacement under this warranty are the sole responsibility of the purchaser. This warranty only applies to the original purchaser and is not transferable.

## Do Not Return The Unit To The Place Of Purchase

Contact CPE's Technical Service and CPE will troubleshoot any issue via phone or e-mail. If the problem is not corrected by this method, CPE may, at its option, authorize other means of repair and/or replacement.

## Warranty Exclusions

This warranty does not cover the following repairs and equipment:

### Normal Wear

Products with mechanical and electrical components need periodic parts and service to perform well. This warranty does not cover repair when normal use has exhausted the life of a part or the equipment as a whole.

### Installation, Use and Maintenance

This warranty will not apply to parts and/or labor if the product is deemed to have been misused, neglected, involved in an accident, abused, loaded beyond the product's limits, modified, installed improperly or connected incorrectly to any electrical component. Normal maintenance is not covered by this warranty and is not required to be performed at a facility or by a person authorized by CPE.

## Other Exclusions

This warranty excludes:

- Cosmetic defects such as paint, decals, etc.
- Wear items such as winch cable, etc.
- Accessory parts such as storage covers.
- Failures due to acts of God and other force majeure events beyond the manufacturer's control.
- Problems caused by parts that are not original Champion Power Equipment parts.

## Limits of Implied Warranty and Consequential Damage

Champion Power Equipment disclaims any obligation to cover any loss of time, use of this product, freight, or any incidental or consequential claim by anyone from using this product. THIS WARRANTY IS IN LIEU OF ALL OTHER WARRANTIES, EXPRESS OR IMPLIED, INCLUDING WARRANTIES OF MERCHANTABILITY OR FITNESS FOR A PARTICULAR PURPOSE.

A unit provided as an exchange will be subject to the warranty of the original unit. The length of the warranty governing the exchanged unit will remain calculated by reference to the purchase date of the original unit.

This warranty gives you certain legal rights which may change from state to state or province to province. Your state or province may also have other rights you may be entitled to that are not listed within this warranty.

## Contact Information

### Address

Champion Power Equipment, Inc.  
6370 S Pioneer Way, Unit 101  
Las Vegas, NV 89113 USA  
[www.championpowerequipment.com](http://www.championpowerequipment.com)

### Customer Service

Toll Free: 1-877-338-0999  
[info@championpowerequipment.com](mailto:info@championpowerequipment.com)  
Fax no.: 1-562-236-9429

### Technical Service

Toll Free: 1-877-338-0999  
[tech@championpowerequipment.com](mailto:tech@championpowerequipment.com)

📞 EMERGENCY 24 HOUR SUPPORT: 1-562-204-1188